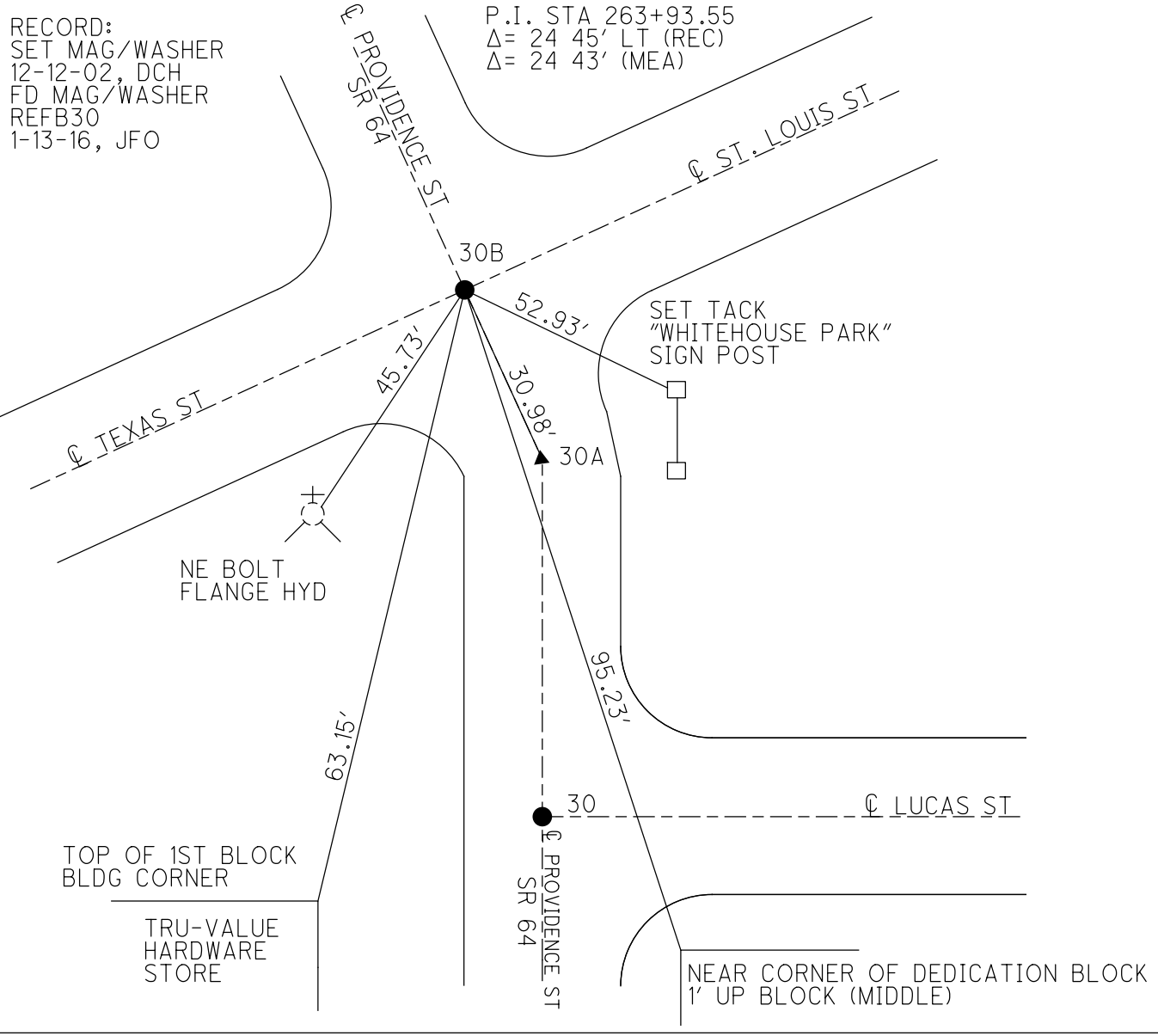
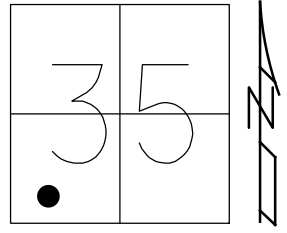


O.D.O.T. DISTRICT 2 SURVEY OFFICE (USE ONLY)

PERSONNEL _____ REFERENCE NO. 30 B SHEET 24 OF 50
 NOTES RHOADES DATE 6-16-17 ROUTE SR 64
 H.C. POORE WEATHER FAIR COUNTY LUCAS
 R.C. CARSON TEMP. 69° TOWNSHIP WATERVILLE
O'DONNELL SECTION 35
 T 7 N R 9 E

TYPE MONUMENT MAG/WASHER
 ON SURFACE - ~~BELOW~~ ON
~~LEFT~~ - CL PAV'T - ~~RIGHT~~ ON
TO EDGE PAVEMENT
 S.L.M. 262+65
 Grid: Northing: 677068.4603 Easting: 1611700.4687



O.D.O.T. DISTRICT 2 SURVEY OFFICE

PERSONNEL

REFERENCE NO. 30

SHEET 33 OF 47

NOTES ROUSOS

DATE 5-21-02

ROUTE S.R. 64

H.C. HOMAN

WEATHER CLOUDY

COUNTY LUCAS

R.C. MICHALAK

TEMP. 50

TOWNSHIP WATERVILLE

SECTION _____

T ___ R ___

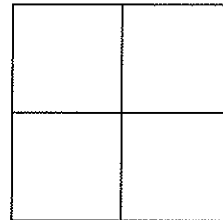
TYPE MONUMENT SM RR SPK. @ P.I. PK AT OTHERS

ON SURFACE - ~~BELOW~~ YES

~~LEFT~~ - Q PAV'T - ~~RIGHT~~ YES

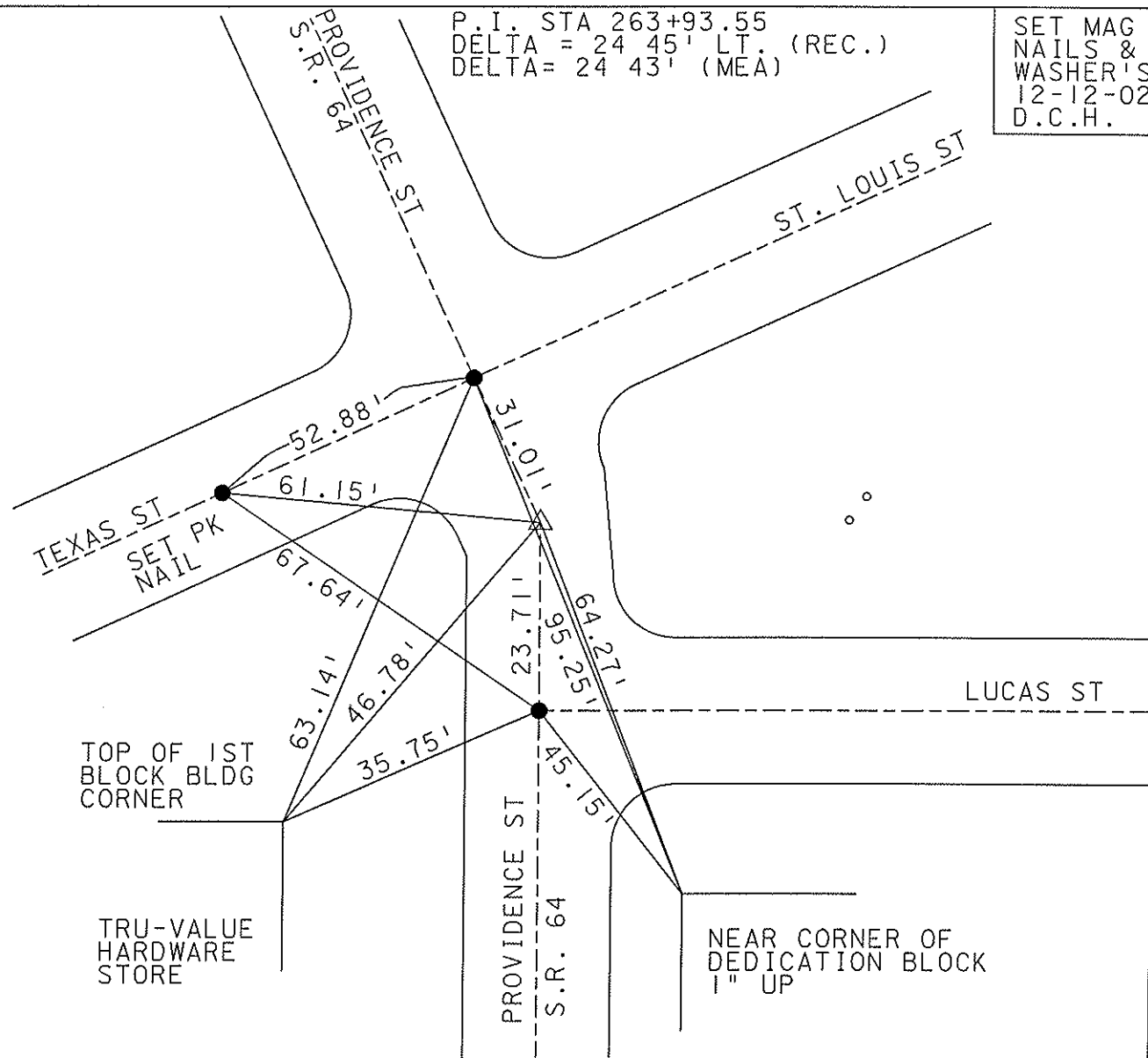
21' TO RT. EDGE PAVEMENT

S.L.M. _____ P.I. 262+67



P.I. STA 263+93.55
 DELTA = 24 45' LT. (REC.)
 DELTA = 24 43' (MEA)

SET MAG
 NAILS &
 WASHER'S
 12-12-02
 D.C.H.



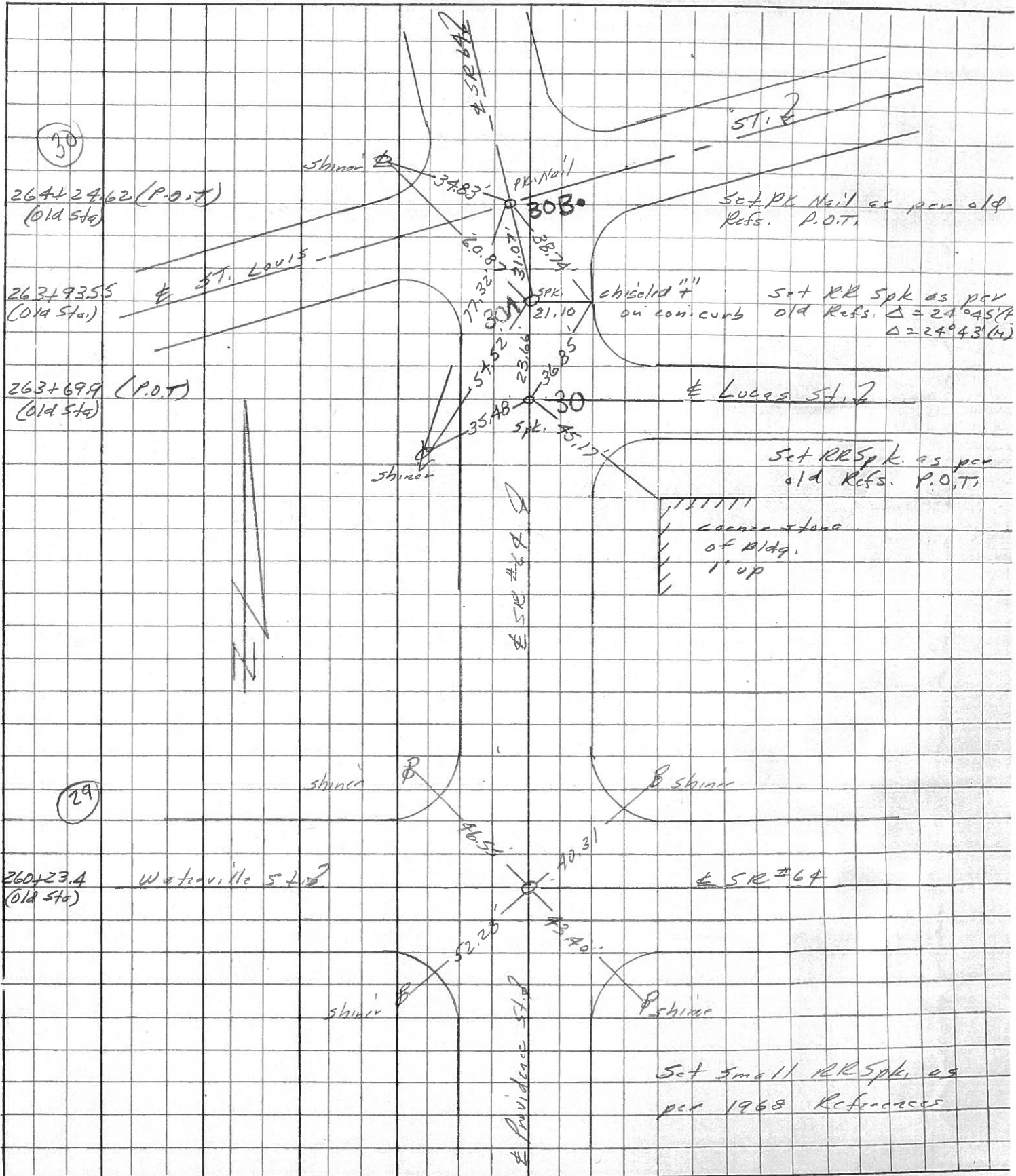
PERSONNEL	TITLE	PERSONNEL	TITLE
Stout			
Crew			

COUNTY Lucas DATE 5 April 77

S. R. 69 WEATHER Cold

SEC. Whitehouse TEMP. 38°

DESCRIPTION References to Control Points JOB NO.



Personnel

Title

Merritt

Jackson

Radameski

Carpenter

Date 12-3-51

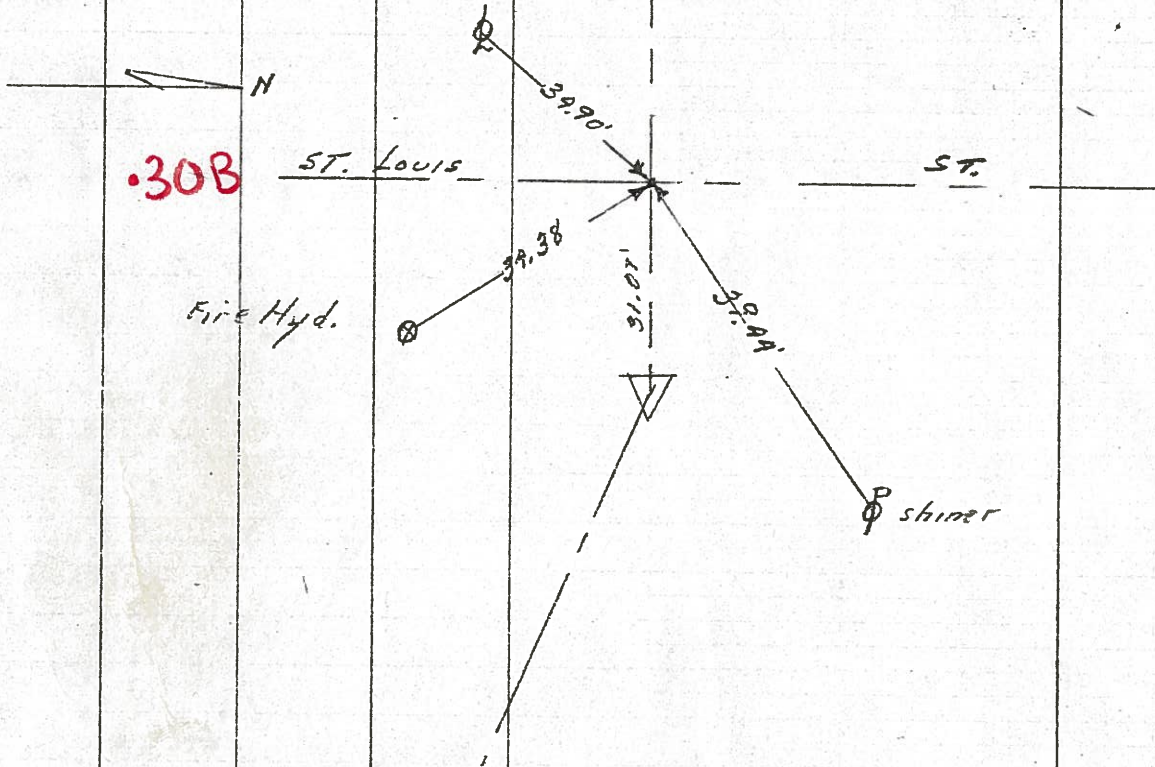
County Lucas

Sheet No. 3

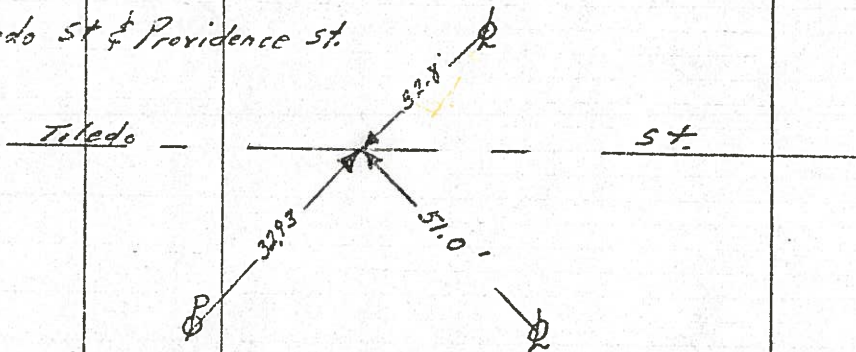
Weather Clear 35° S. R. No. # 64

Section Whitehouse Job No.

264+24.62 @ St. Louis & Providence



266+02.57 @ Toledo St & Providence St.



177.95
OK

269+50.00
64+02.57
347.93