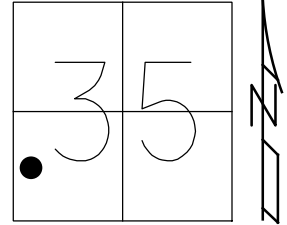


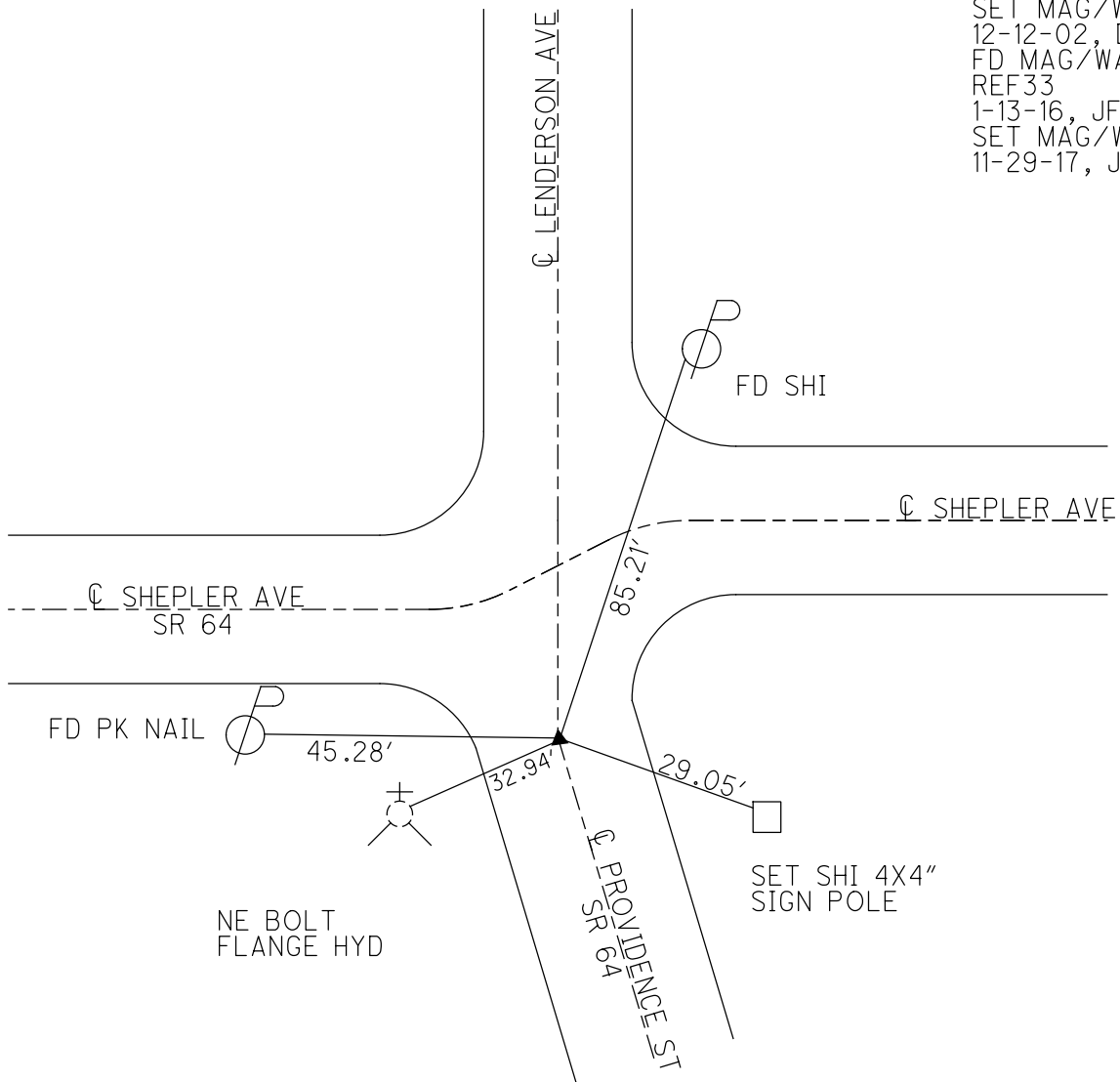
O.D.O.T. DISTRICT 2 SURVEY OFFICE (USE ONLY)

PERSONNEL _____ REFERENCE NO. 33 SHEET 27 OF 50
 NOTES RHOADES DATE 6-15-17 ROUTE SR 64
 H.C. POORE WEATHER CLOUDY COUNTY LUCAS
 R.C. O'DONNELL TEMP. 77° TOWNSHIP WATERVILLE
 _____ SECTION 35
 _____ T 7 N R 9 E

TYPE MONUMENT MAG/WASHER
 ON SURFACE - ~~BELOW~~ ON
 LEFT - ☉ PAV'T - ~~RIGHT~~ 4'
22' TO LT EDGE PAVEMENT
 S.L.M. 273+69.74
 Grid: Northing: 678074.0151 Easting: 1611241.8988



RECORD:
 SET MAG/WASHER
 12-12-02, DCH
 FD MAG/WASHER
 REF33
 1-13-16, JFO
 SET MAG/WASHER
 11-29-17, JMR



O.D.O.T. DISTRICT 2 SURVEY OFFICE

PERSONNEL

REFERENCE NO. 33

SHEET 36 OF 47

NOTES ROUSOS

DATE 5-21-02

ROUTE S.R. 64

H.C. HOMAN

WEATHER P. CLOUSY

COUNTY LUCAS

R.C. MICHALAK

TEMP. 54

TOWNSHIP WATERVILLE

SECTION _____

T ___ R ___

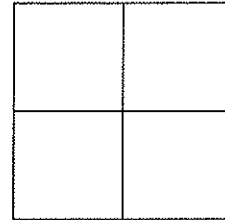
TYPE MONUMENT PT. A RR SPIKE

ON SURFACE - ~~BELOW~~ YES

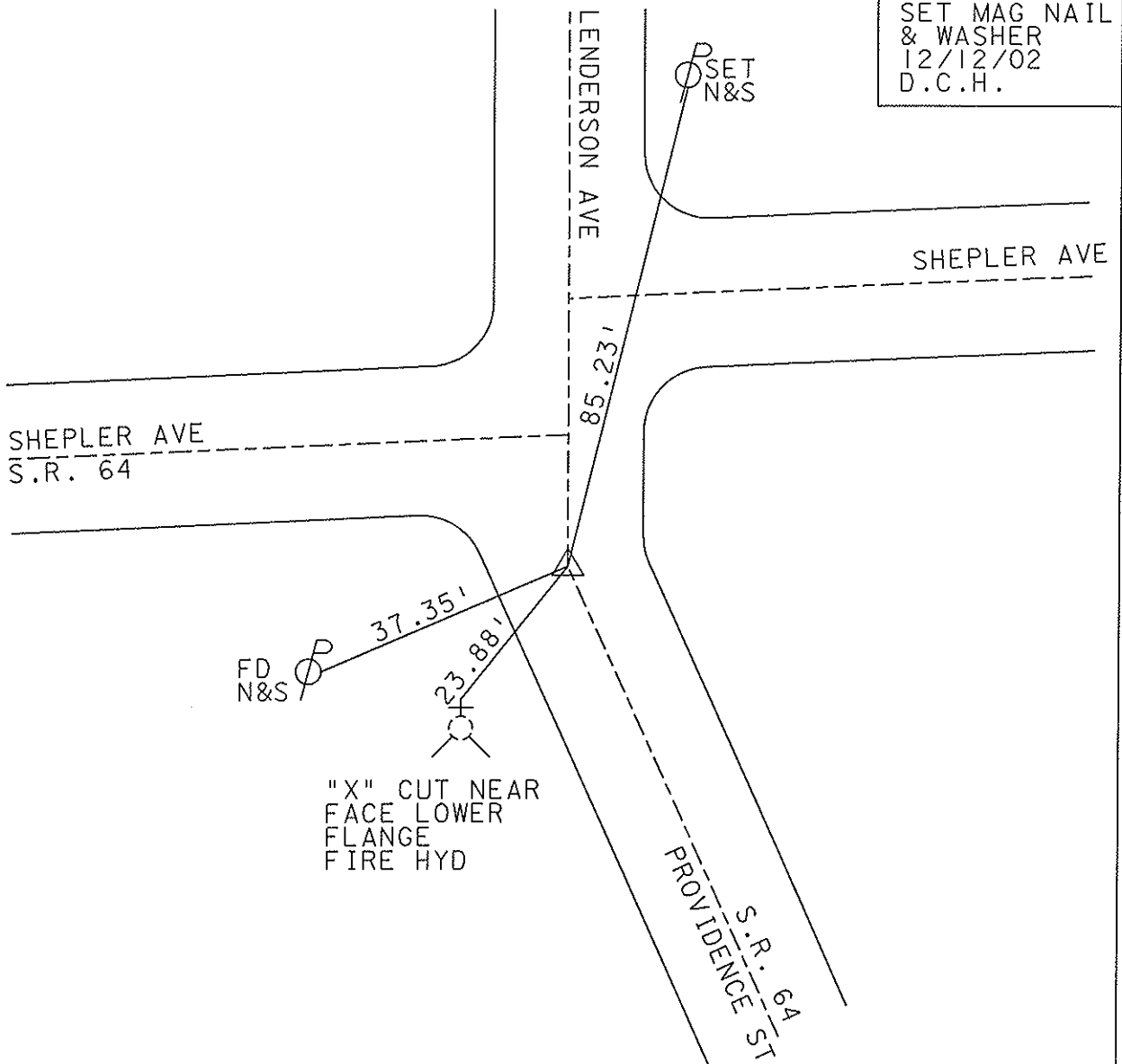
~~LEFT~~ - Q PAV'T - ~~RIGHT~~ YES

22' TO LT EDGE PAVEMENT

S.L.M. 274+12



SET MAG NAIL
& WASHER
12/12/02
D.C.H.



O.D.O.T. DISTRICT 2 SURVEY OFFICE 37 of 47

PERSONNEL

REFERENCE NO. 33

SHEET 37 OF 47

NOTES LOEHRKE

H.C. Curtis

R.C. Luce

DATE 8-7-91

WEATHER N,ce

TEMP. +70

ROUTE S.R. 64

COUNTY LUCAS

TOWNSHIP Waterville

SECTION _____

T _____ R _____

TYPE MONUMENT R.R. Spike Pt "A"

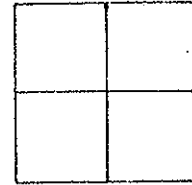
ON SURFACE - BELOW Yes

LEFT - C. PAV'T. - RIGHT Yes

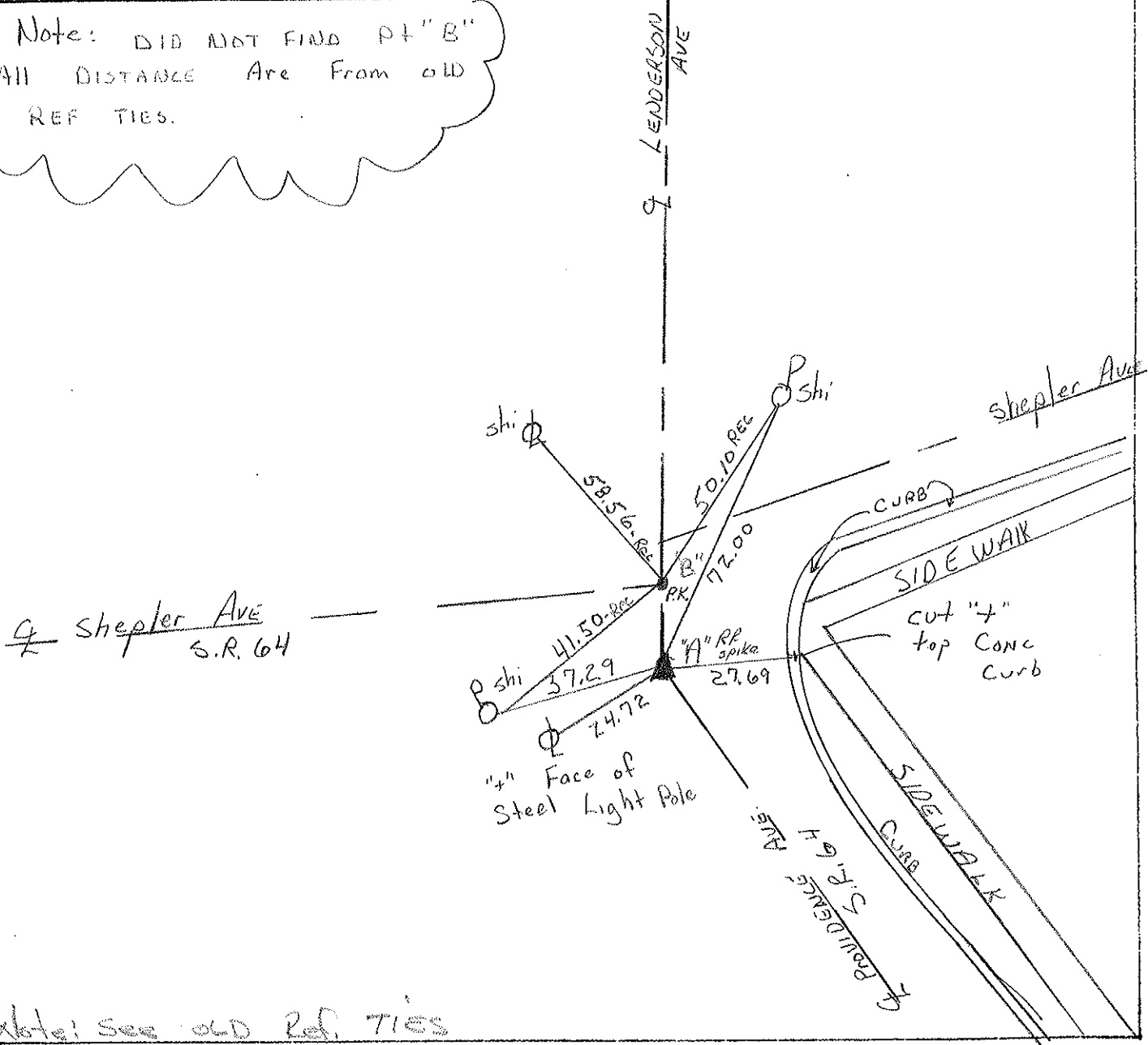
ZZ TO Lt EDGE PAVEMENT

S.L.M. 274+69

Set 3m
R.R. Spike
P.I. 3-5' 9"



Note: DID NOT FIND Pt "B"
All DISTANCE Are From OLD
REF TIES.

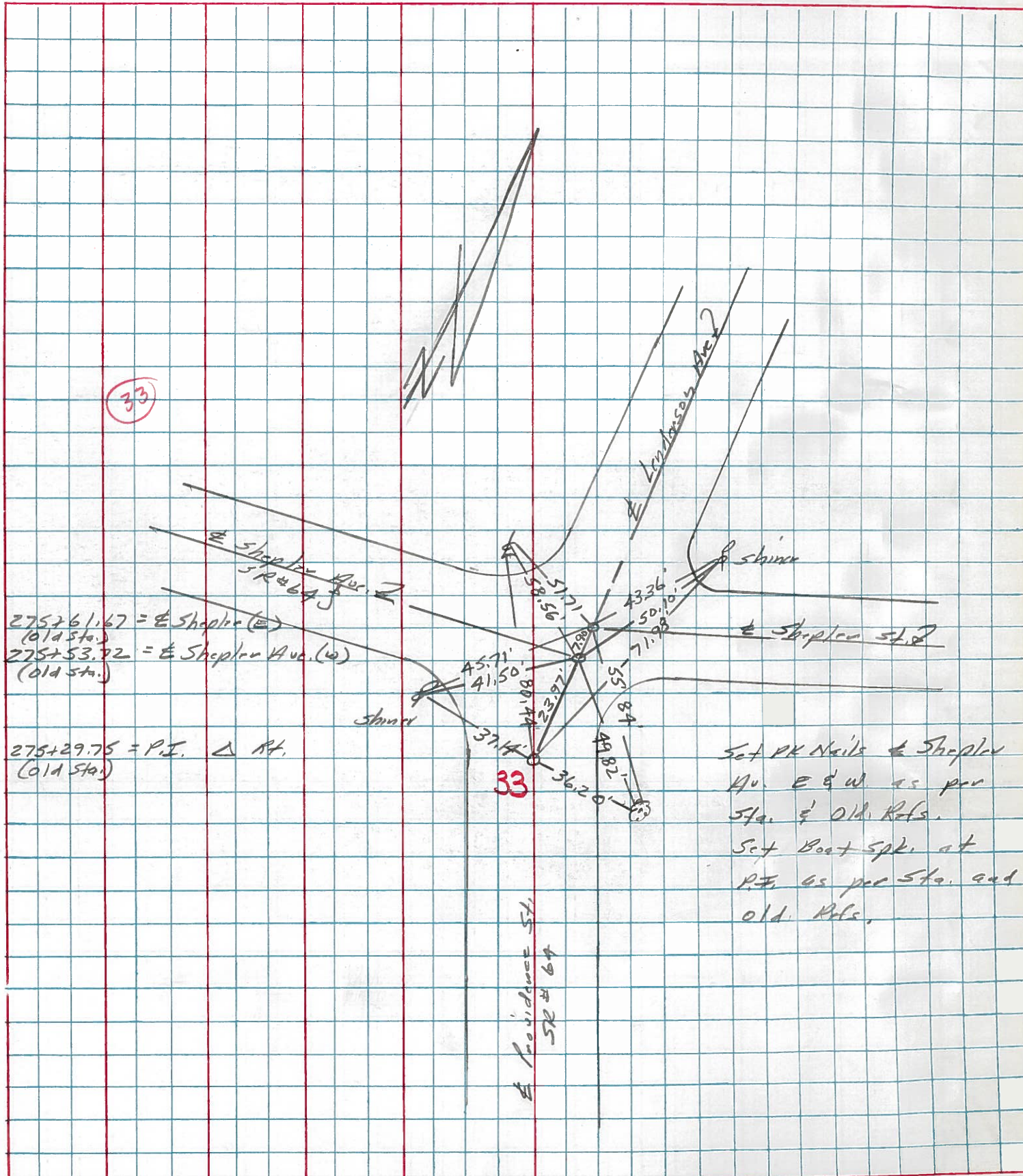


Note: see OLD Ref. TIES

PERSONNEL	TITLE	PERSONNEL	TITLE	COUNTY	DATE	WEATHER	TEMP
Stone				Locas	11 April, 77	Windy	75°
§				S. R. 64			
Cocul				SEC. Whitehouse			

DESCRIPTION: References to Control Points JOB NO. _____

LEFT CENTER LINE RIGHT



Personnel

Title

Mennitt

Jackson

Rodameski

Carpenter

Date 12-3-51

County Lucas

Sheet No. 4

Weather clear

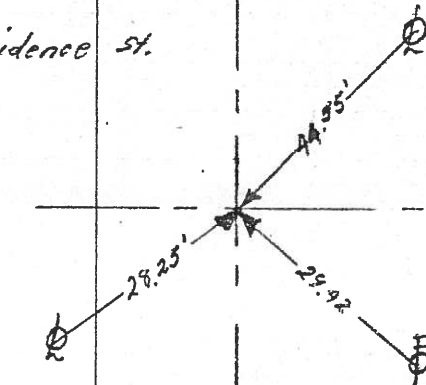
S. R. No. 64

Section ~~Whitcomb~~ Job No.

269 + 50 & Maumee & Providence St.
Pt. on M.H. Cover

32

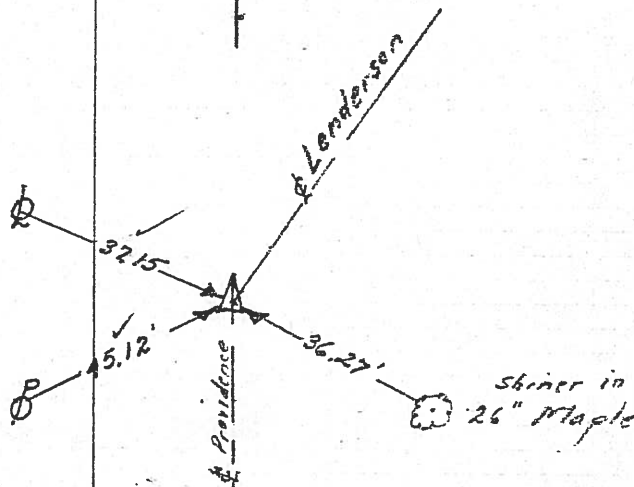
N



275 + 29.75 Δ to Pt. iron Pin

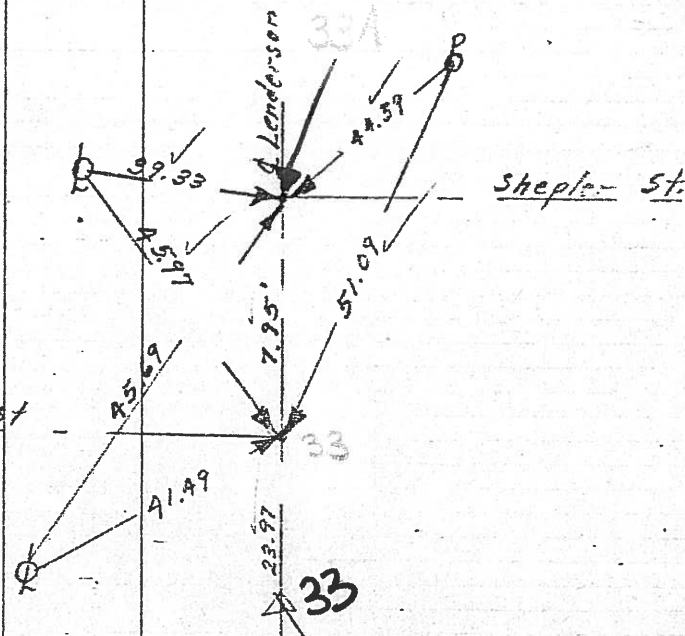
9 + 50
579.75

33



.33

275 + 61.67



275 + 53.72

29.75
23.97

shepler st

33