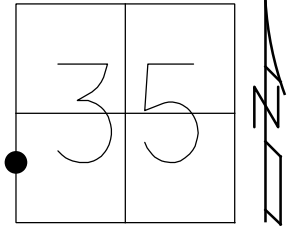


O.D.O.T. DISTRICT 2 SURVEY OFFICE (USE ONLY)

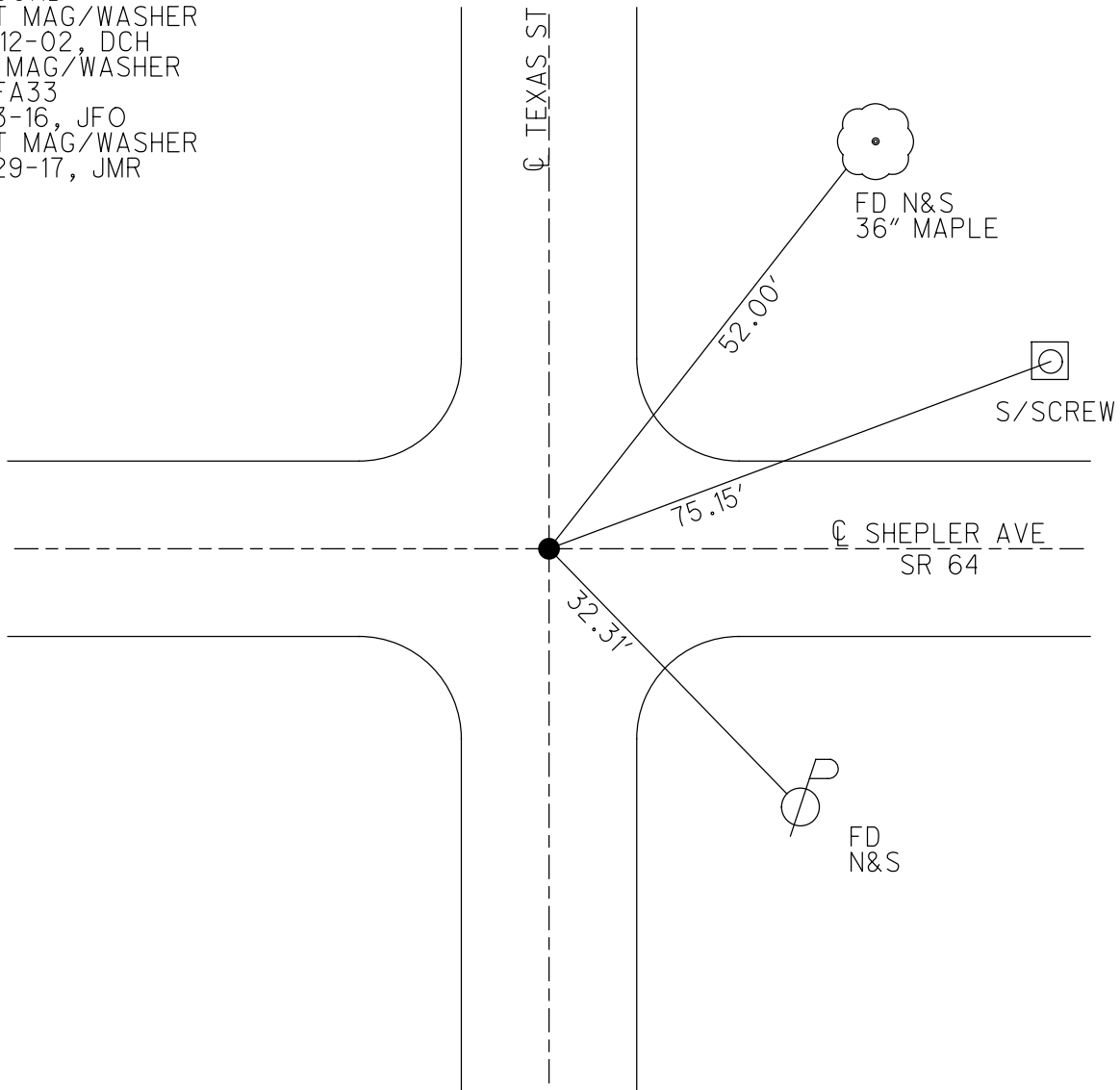
PERSONNEL _____ REFERENCE NO. 33 A SHEET 28 OF 50

NOTES RHOADES DATE 6-15-17 ROUTE SR 64
 H.C. POORE WEATHER CLOUDY COUNTY LUCAS
 R.C. O'DONNELL TEMP. 77° TOWNSHIP WATERVILLE
 _____ SECTION 35
 _____ T 7 N R 9 E

TYPE MONUMENT MAG/WASHER
 ON SURFACE - ~~BELOW~~ ON
~~LEFT - C~~ PAV'T - ~~RIGHT~~ ON
TO EDGE PAVEMENT
 S.L.M. 275+98
 Grid: Northing: 678099.8574 Easting: 1611037.7539



RECORD:
 SET MAG/WASHER
 12-12-02, DCH
 FD MAG/WASHER
 REFA33
 1-13-16, JFO
 SET MAG/WASHER
 11-29-17, JMR



O.D.O.T. DISTRICT 2 SURVEY OFFICE

PERSONNEL

REFERENCE NO. 33-A

SHEET 38 OF 47

NOTES ROUSOS

DATE 5-22-02

ROUTE S.R. 64

H.C. HOMAN

WEATHER SUNNY

COUNTY LUCAS

R.C. MICHALAK

TEMP. 42

TOWNSHIP WATERVILL

SECTION _____

T ___ R ___

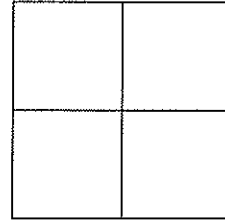
TYPE MONUMENT _____ PK NAIL _____

ON SURFACE - ~~BELOW~~ _____ YES _____

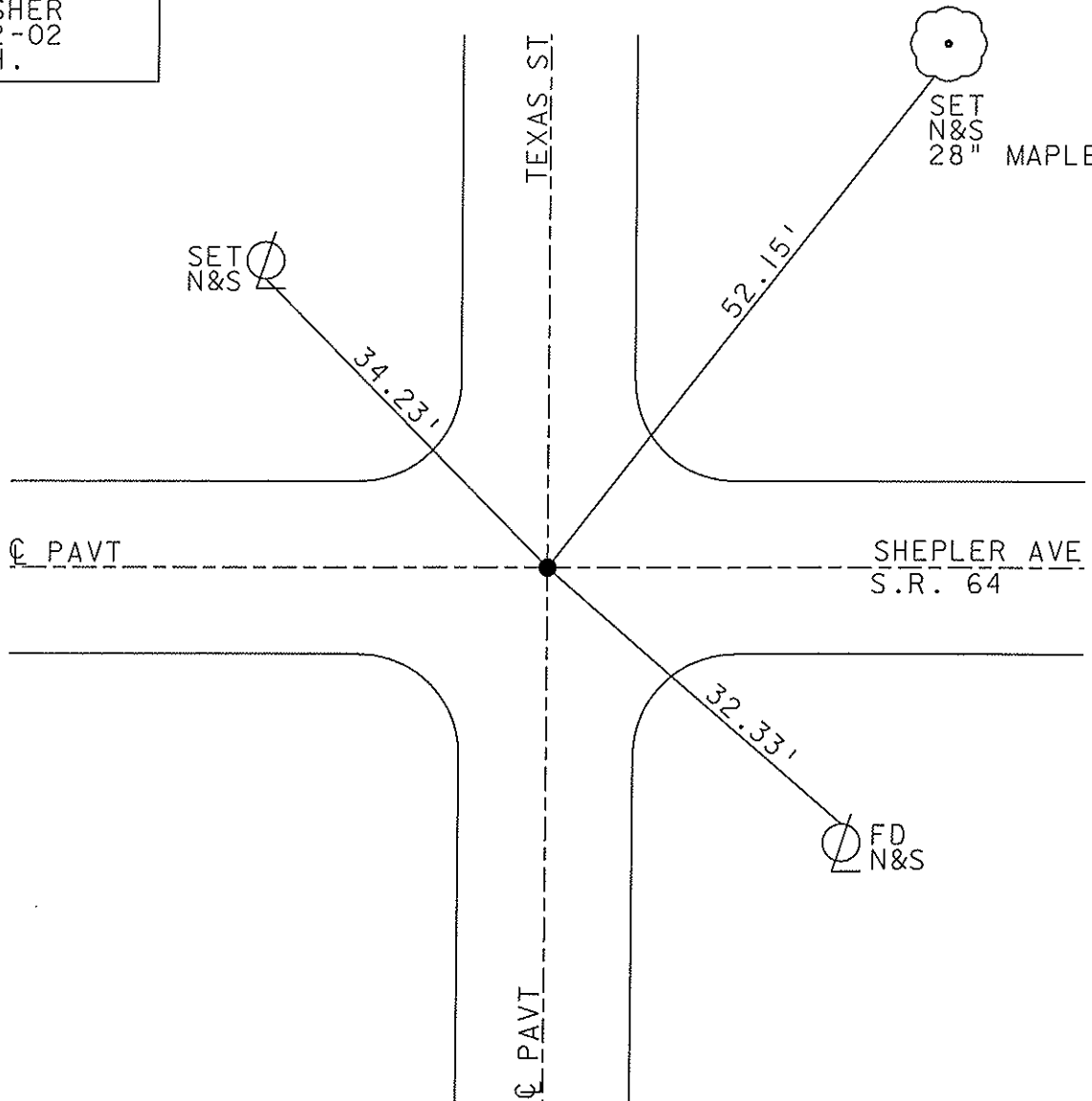
~~LEFT~~ - Q PAVT - ~~RIGHT~~ _____ YES _____

_____ TO _____ EDGE PAVEMENT

S.L.M. _____ 276+31 _____



SET MAG NAIL
& WASHER
12-12-02
D.C.H.



O.D.O.T. DISTRICT 2 SURVEY OFFICE

PERSONNEL _____

REFERENCE NO. 33-A

SHEET 35 OF 49

NOTES LOEHRKE

H.C. CURTIS

R.C. LUCE

DATE 8-7-91

WEATHER Clear

TEMP. +72

ROUTE S.R. 64

COUNTY LUCAS

TOWNSHIP WATERVILLE

SECTION _____

T _____ R _____

TYPE MONUMENT P.K. Nail - Origin UNK.

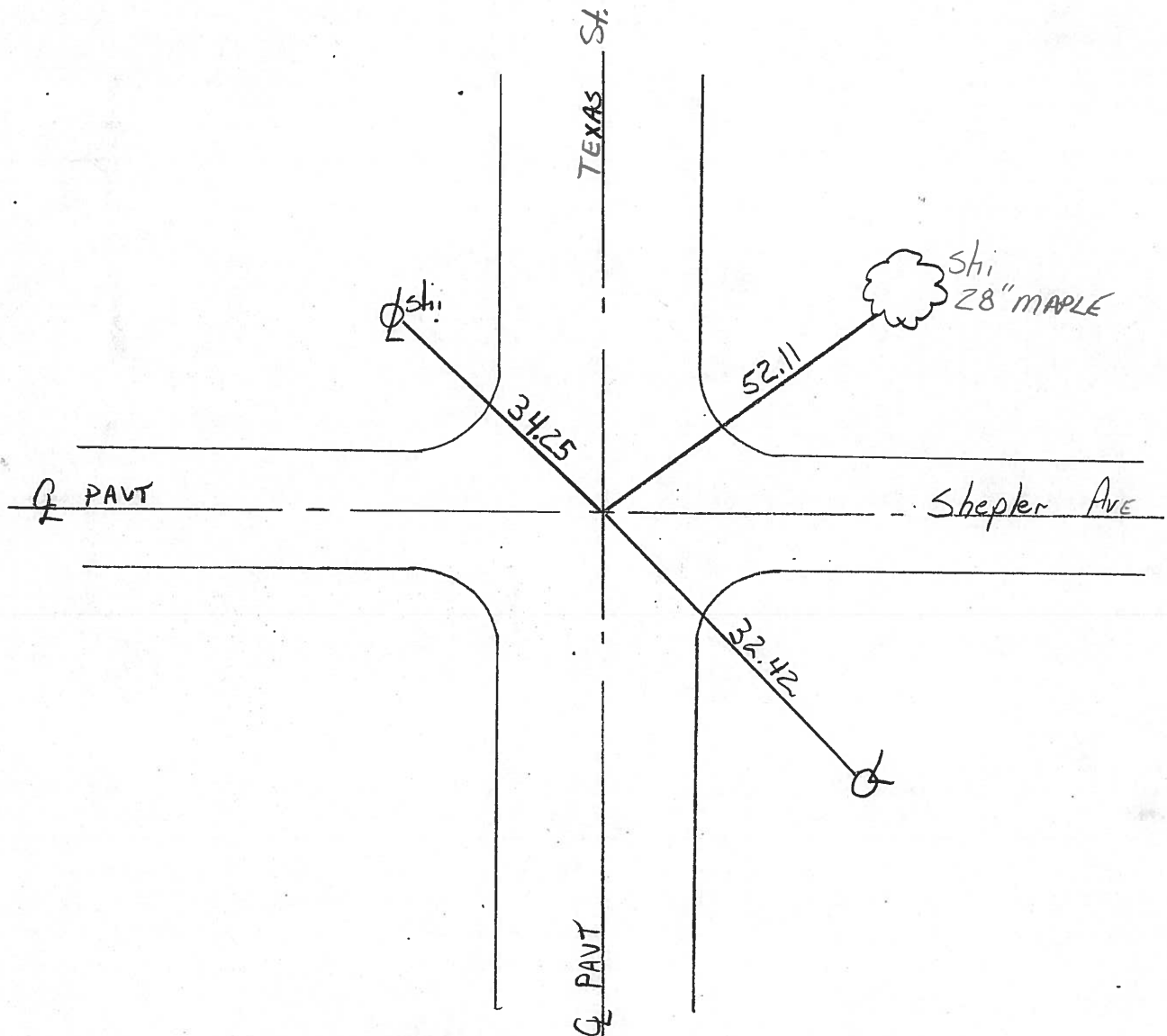
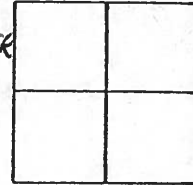
ON SURFACE - BELOW Yes

LEFT - C PAV'T. - RIGHT Yes

TO EDGE PAVEMENT

S.L.M. 276 +91

Set P.K./WASHER
3-5-92



Town 6N Range 9E

RD 2 Corner of Sections 2

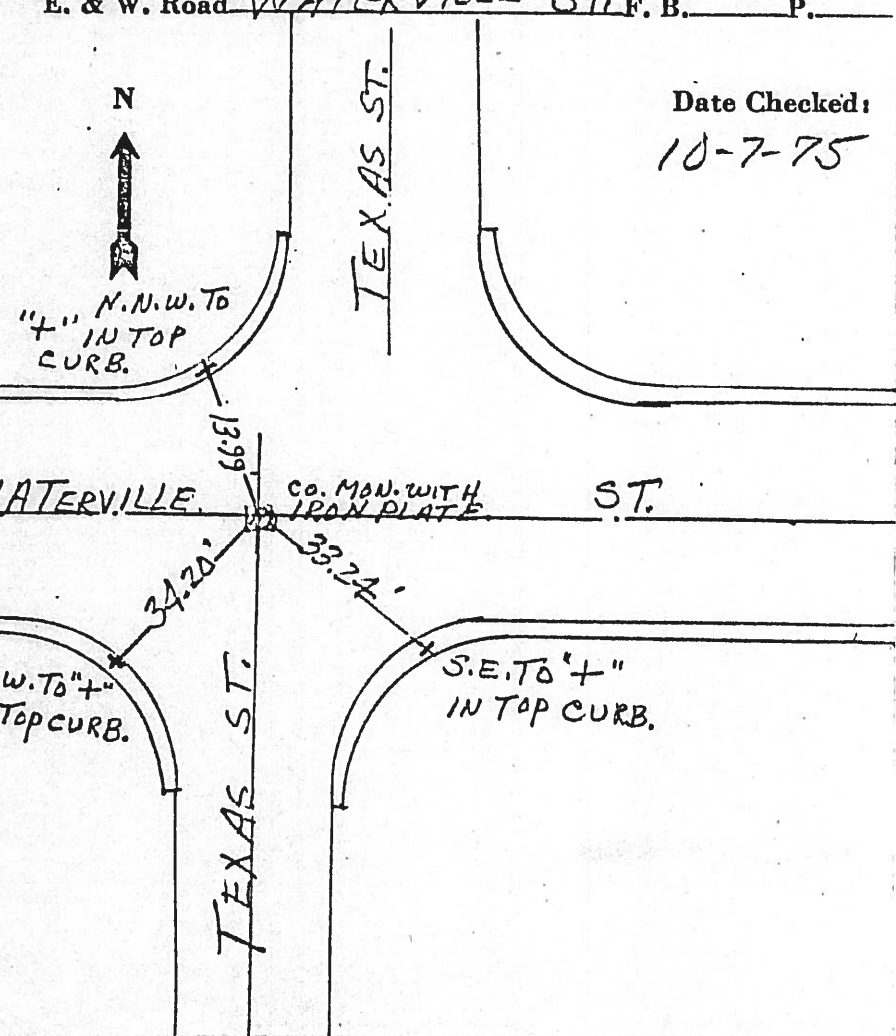
Kind of Monument CO. MON. Remarks WITH IRON PLATE 1 1/2" BELOW PAVEMENT

FOUND BY LIPPER

N. & S. Road TEXAS ST F. B. P.

E. & W. Road WATERVILLE ST. F. B. P.

Date Checked:
10-7-75



Town 6N Range 9E

N 1/4 Corner of Sections 2

Kind of Monument STONE Remarks R. R. SPK. AT SURFACE.

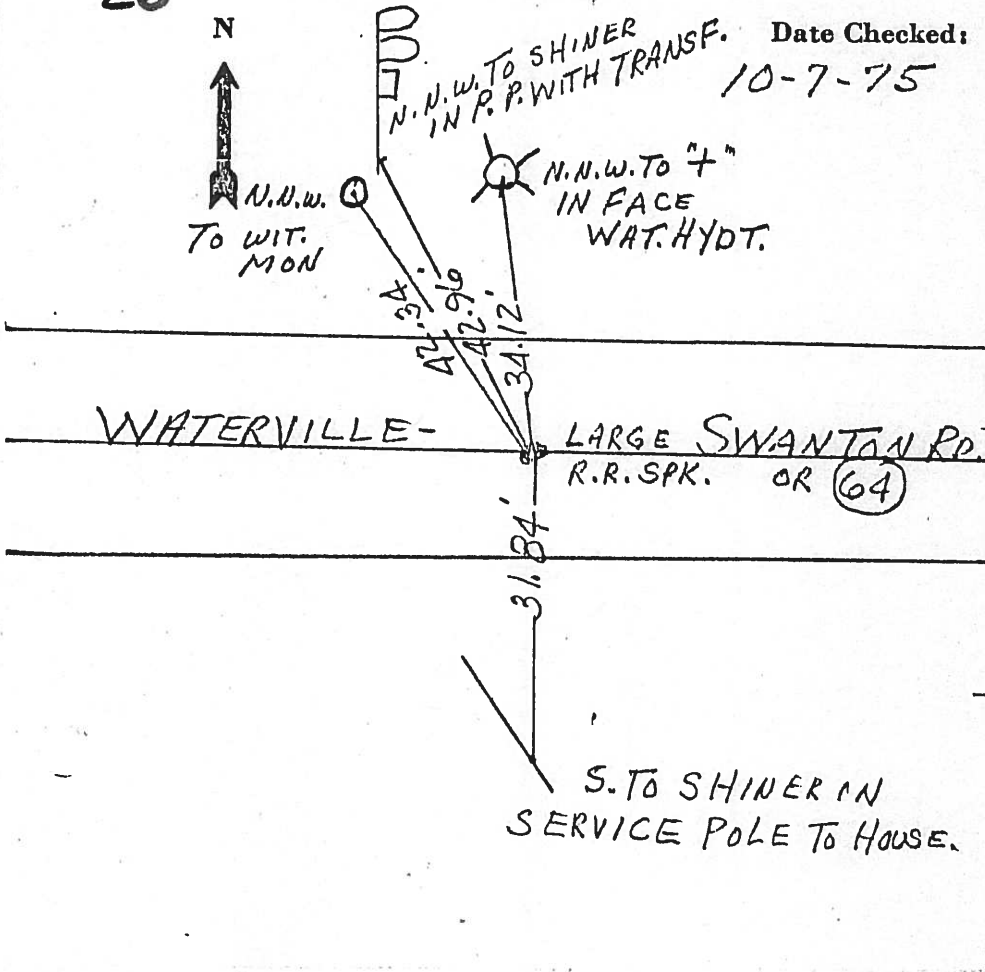
FOUND BY LIPPER

N. & S. Road WHITE HOUSE VILLAGE LIMITS F. B. P.

E. & W. Road WATERVILLE - SWANTON RD OR (64) F. B. P.

26

Date Checked:
10-7-75



Town 7N Range 9E
Y4 Corner of Sections 34-35
 Kind of Monument CO. MON Remarks LARGE
IRON BOLT AT SURFACE
 FOUND SEP BY LIPPER
 N. & S. Road WHITE HOUSE - SPENCER RD. F. B. P.
 E. ~~XX~~ Road CABLE ST. F. B. P.

