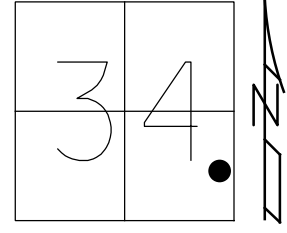


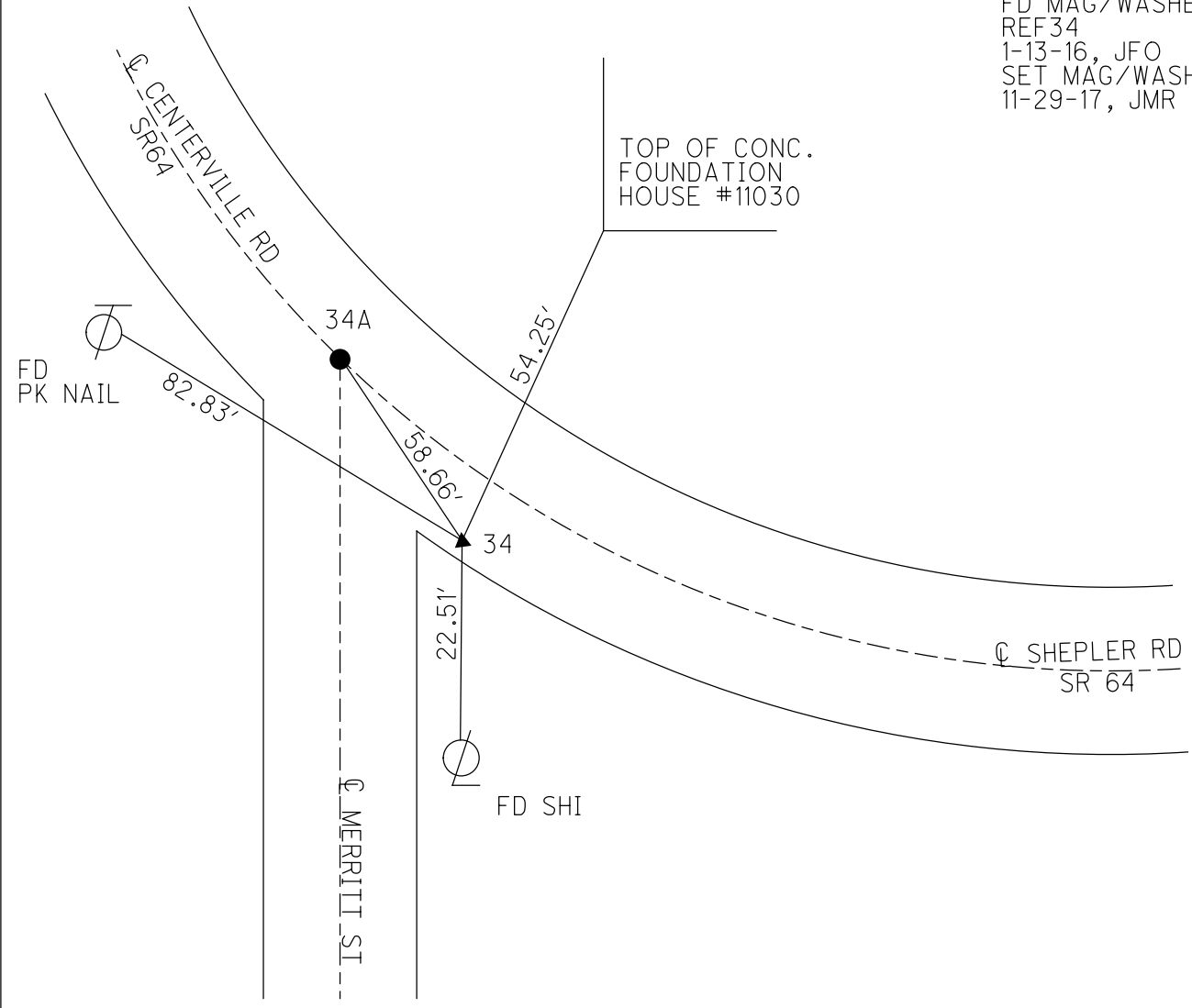
O.D.O.T. DISTRICT 2 SURVEY OFFICE (USE ONLY)

PERSONNEL \_\_\_\_\_ REFERENCE NO. 34 SHEET 29 OF 50  
 NOTES RHOADES DATE 6-15-17 ROUTE SR 64  
 H.C. POORE WEATHER CLOUDY COUNTY LUCAS  
 R.C. O'DONNELL TEMP. 77° TOWNSHIP 34  
 \_\_\_\_\_ SECTION 11  
 \_\_\_\_\_ T 7 N R 9 E

TYPE MONUMENT MAG/WASHER  
 ON SURFACE - BELOW ON  
 LEFT - ☉ PAV'T - RIGHT 14.0'  
4.0' TO LT EDGE PAVEMENT  
 S.L.M. 279+82.05  
 Grid: Northing: 678103.8024 Easting: 1610653.3191



RECORD:  
 SET MAG/WASHER  
 12-13-02, DCH  
 FD MAG/WASHER  
 REF34  
 1-13-16, JFO  
 SET MAG/WASHER  
 11-29-17, JMR



O.D.O.T. DISTRICT 2 SURVEY OFFICE

PERSONNEL

REFERENCE NO. 34

SHEET 39 OF 47

NOTES ROUSOS

DATE 5-22-02

ROUTE S.R. 64

H.C. HOMAN

WEATHER SUNNY

COUNTY LUCAS

R.C. MICHALAK

TEMP. 42

TOWNSHIP WATERVILLE

SECTION \_\_\_\_\_

T \_\_\_\_\_ R \_\_\_\_\_

*mag nails @ 'B', by others*

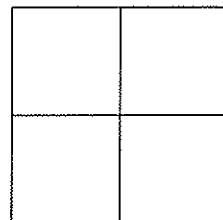
TYPE MONUMENT \_\_\_\_\_  
PK NAIL @ 'A'

ON SURFACE - ~~BELOW~~ \_\_\_\_\_ YES

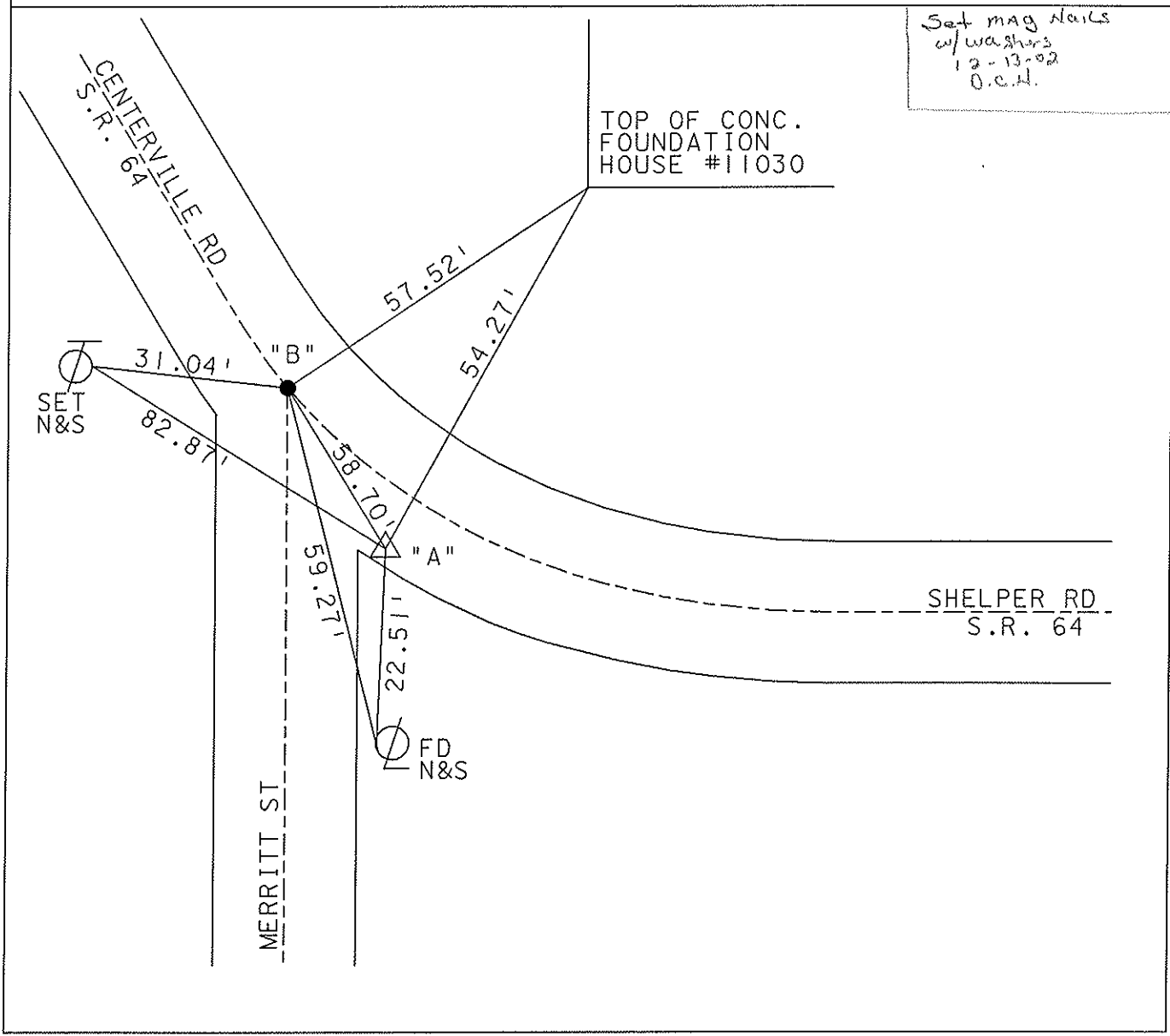
LEFT - Q PAV'T - ~~RIGHT~~ \_\_\_\_\_ 14,0'

4.0 TO LT. EDGE PAVEMENT

S.L.M. \_\_\_\_\_ 280+07 @ 'A'



*Set mag nails  
w/ washers  
12-13-02  
O.C.H.*



# O.D.O.T. DISTRICT 2 SURVEY OFFICE

PERSONNEL

REFERENCE NO. 34

SHEET 36 OF 49

NOTES LOEHRKE

H.C. CURTIS

R.C. LUCE

DATE 8-7-91

WEATHER Clear

TEMP. +72

ROUTE S.R. 64

COUNTY LUCAS

TOWNSHIP WATERVILLE

SECTION \_\_\_\_\_

T \_\_\_\_\_ R \_\_\_\_\_

TYPE MONUMENT P.K. WASHER

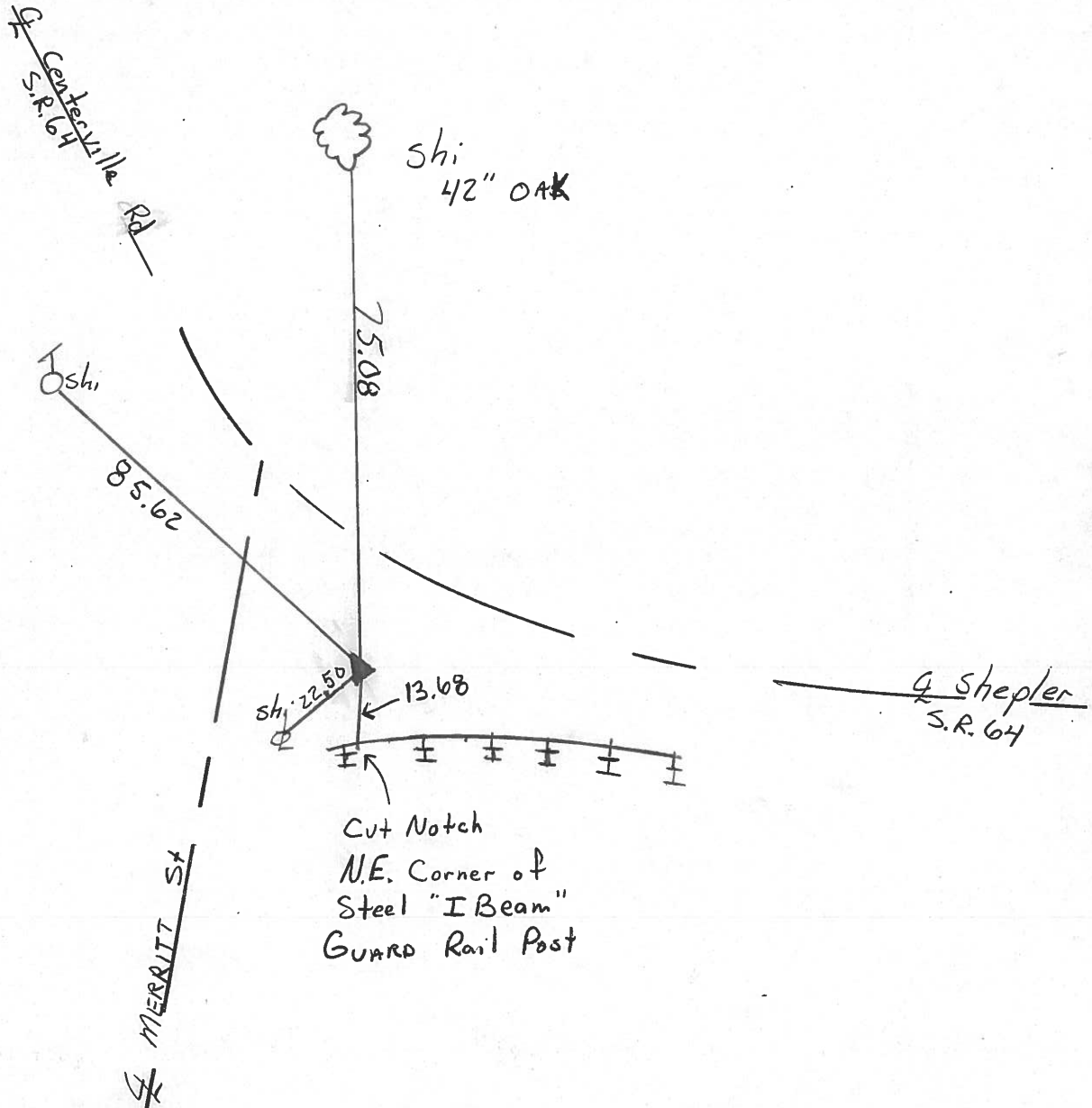
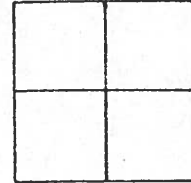
ON SURFACE - BELOW YES

LEFT- & PAV'T. - RIGHT 14.0

4.0 TO <sup>Left</sup> EDGE PAVEMENT

S.L.M. 280 + 17

Set P.K. / WASHER  
3-5-92



County Lucas S.R. #64

Date 27 Jan. 85

Township \_\_\_\_\_

Weather Cold

Section \_\_\_\_\_

Temp. 26°

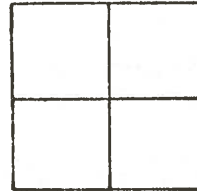
T N, R E

Personnel I. Stone

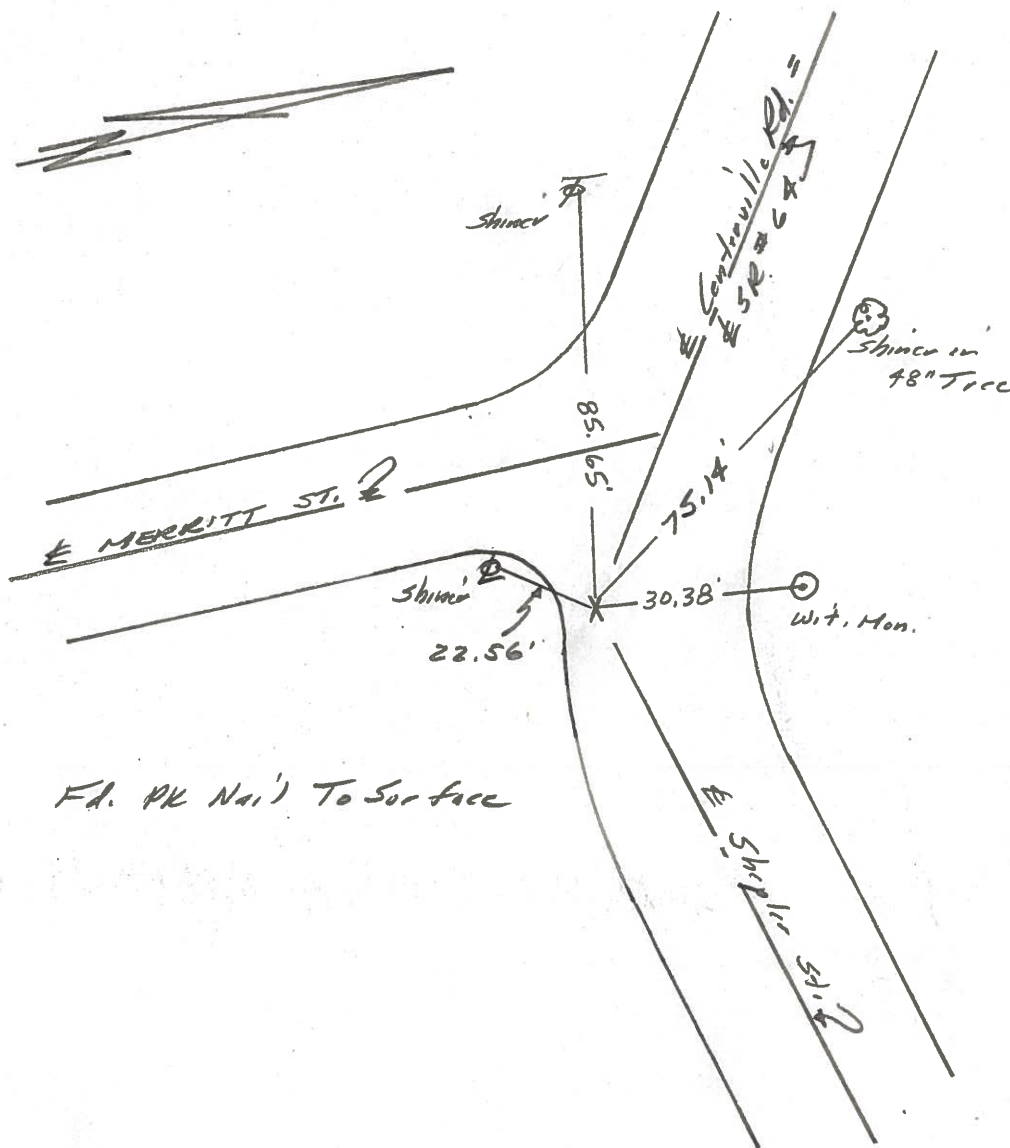
R. Michalek

D. Curtis

J. Hoesehelder

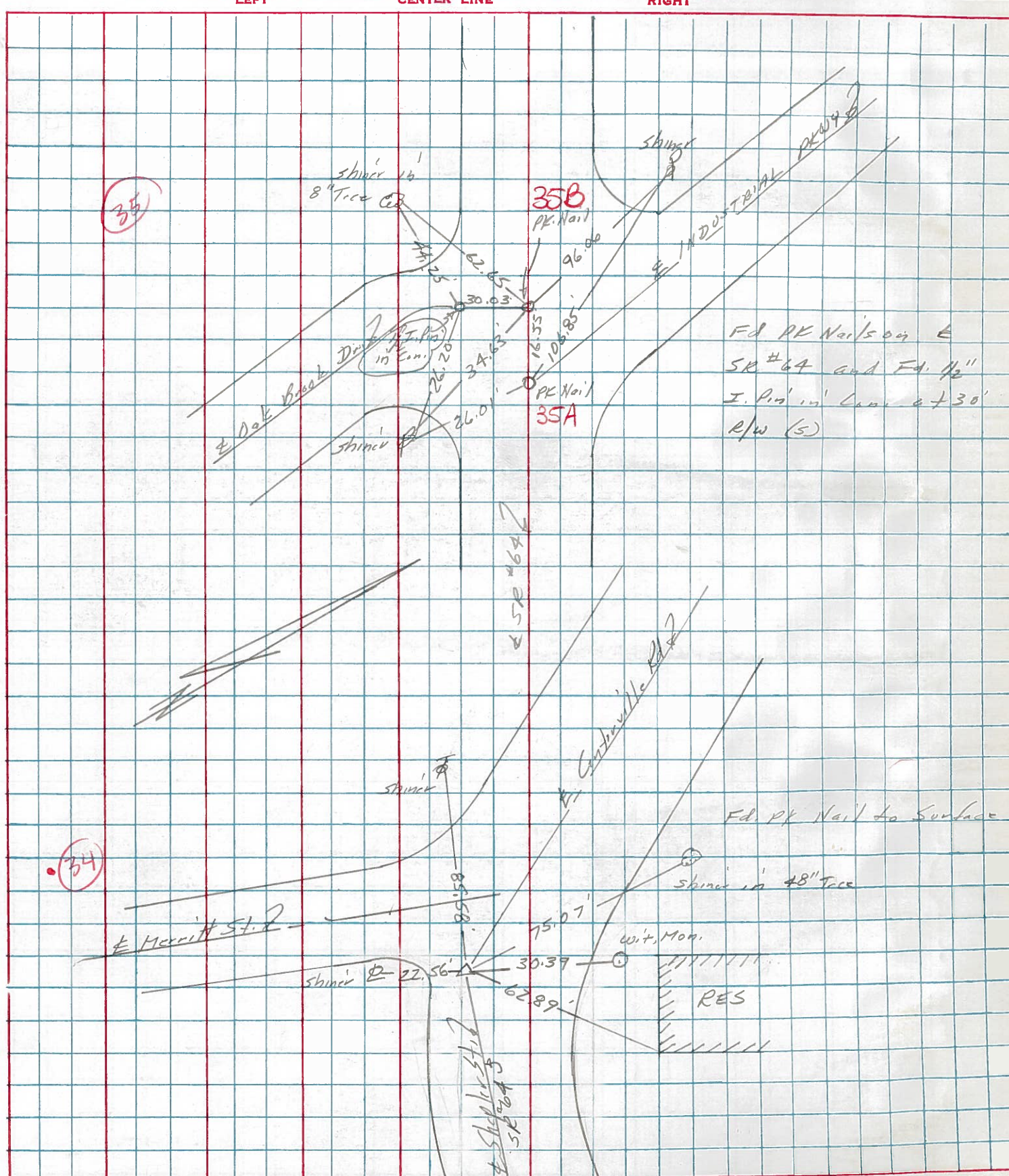


REF. NO. 34



PERSONNEL	TITLE	PERSONNEL	TITLE	COUNTY	DATE
Stone				Lucas	5 April 77
				S. R. 64	WEATHER Cold
				SEC. White House	TEMP. 38°

DESCRIPTION References to Control Points JOB NO. \_\_\_\_\_



PERSONNEL TITLE PERSONNEL TITLE

COUNTY Lucas DATE Aug. 1, 1968

D. Curtis

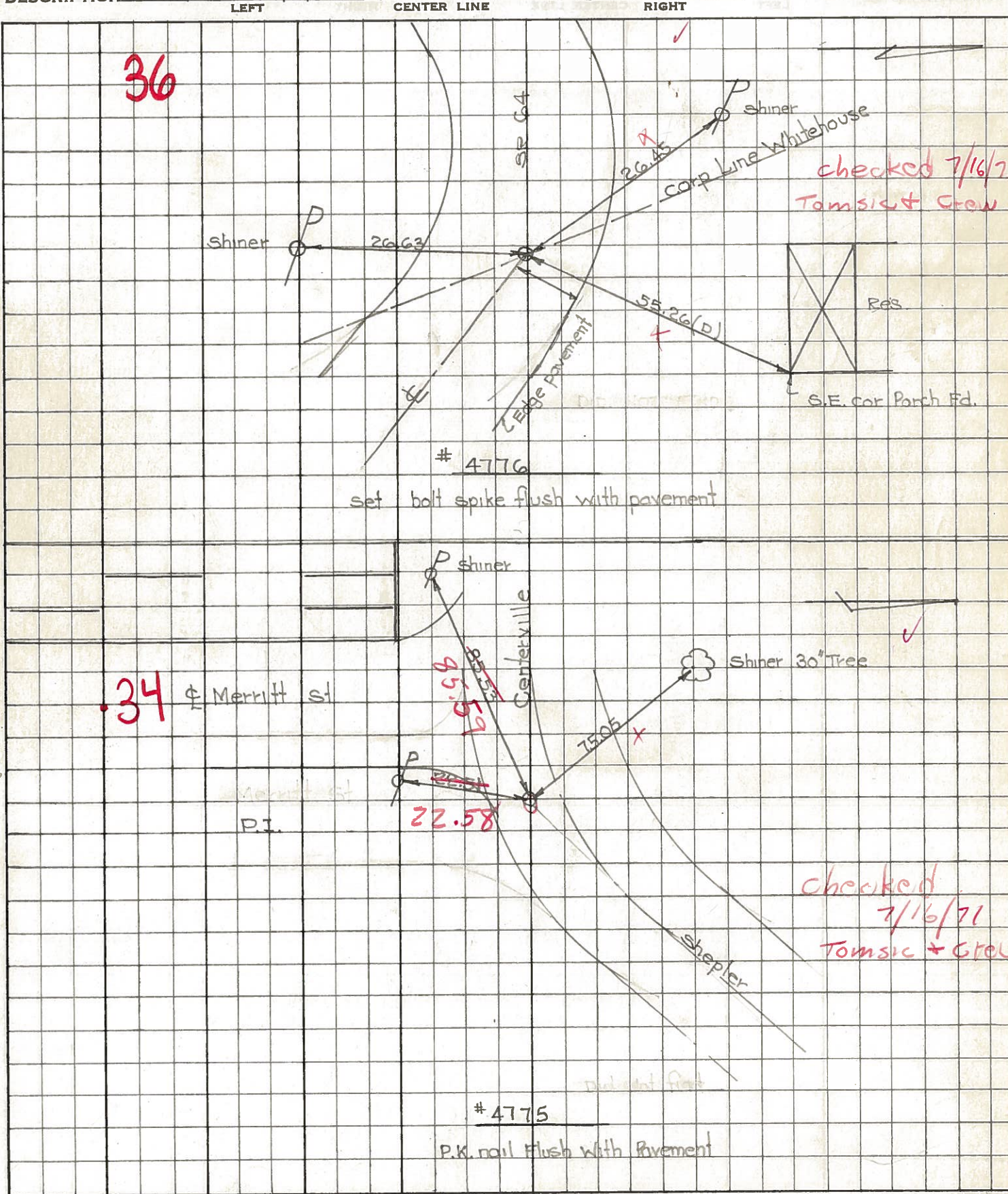
S. R. 64 WEATHER mild

J. Teal

SEC. TEMP. 75°±

J. Brindley

DESCRIPTION S.R. 64 - Ref. Mon. & Control Points JOB NO. 02994(0)



# 212  
old  
Whitehouse  
Corp.  
line

Int.  
Shepler  
to  
Centerville

PERSONNEL TITLE PERSONNEL TITLE

COUNTY Lucas DATE 2 Mar. 66

Stone

Beck

Schroder

S. R. #64

WEATHER Mild

SEC. whitehouse - W.

TEMP. 50°

DESCRIPTION

References To Central Pts.

JOB NO.

LEFT

CENTER LINE

RIGHT

N&S  $\frac{1}{2}$  Sec. 2

None

.29

Int. Providence St.

40.31'

N.E. To Shiner in' L.P. (D)

Fd. 1" I. Pin

43.18'

S.E. To Shiner in' L.P. (D)

7" Below Surface

46.55'

N.W. To Shiner in' L.P. (D)

52.28'

S.W. To Shiner in' P.P. (D)

RT  $\Delta$  = Lt.

None

Near Int. Lucas St.

Int. Shepler St.

None

& Providence St.

34

Int. Shepler St. &

22.51'

S.S.W. To Shiner in' P.P. (D)

Centerville St.

54.84'

N. To S.W. Cor. Fdn. To House (D)

$\Delta$  = Rt.

85.53'

W. To Shiner in' P.P. (D)

Fd. Square Nut

75.05'

W.N.W. To Shiner in' 30" Tree (D)

To Surface

36

#212

E&W  $\frac{1}{2}$  Sec. 34 & 35

55.26'

N. To S.E. Cor. Porch Fdn. (D)

Whitehouse Corp. Linc

26.45'

N.W. To Shiner in' T.P. (D)

Fd. 1" I. Pin

26.63'

S. To Shiner in' P.P. (D)

2" Below Surface

Reed