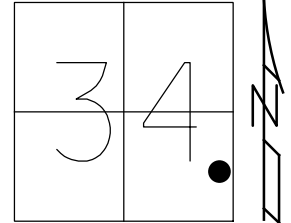


O.D.O.T. DISTRICT 2 SURVEY OFFICE (USE ONLY)

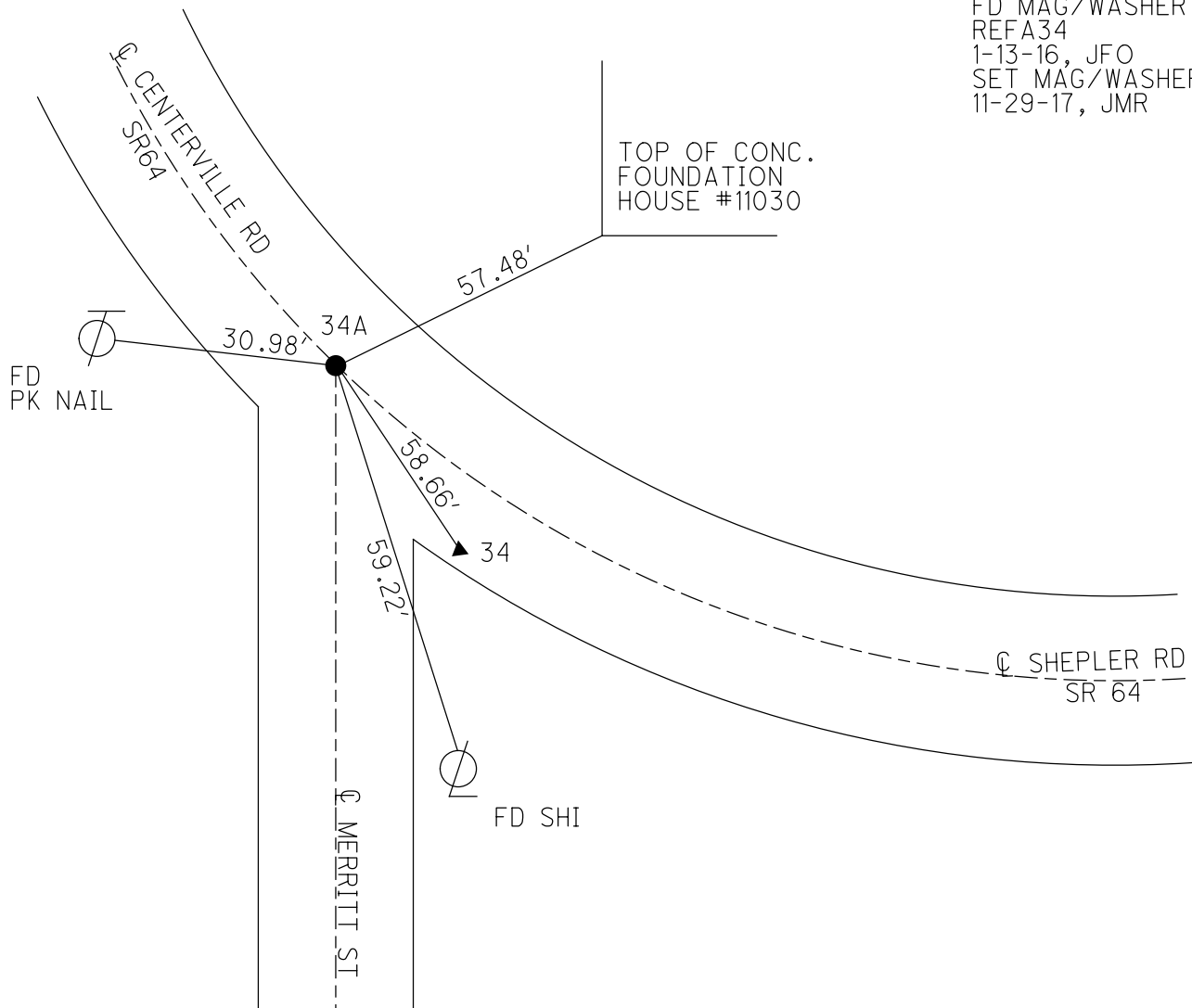
PERSONNEL _____ REFERENCE NO. 34 A SHEET 30 OF 50

NOTES RHOADES DATE 6-15-17 ROUTE SR 64
 H.C. POORE WEATHER CLOUDY COUNTY LUCAS
 R.C. O'DONNELL TEMP. 77° TOWNSHIP WATERVILLE
 _____ SECTION 34
 _____ T 7 N R 9 E

TYPE MONUMENT MAG/WASHER
 ON SURFACE - BELOW ON
 LEFT - ☉ PAV'T - RIGHT ON
 _____ TO _____ EDGE PAVEMENT
 S.L.M. 280+41
 Grid: Northing: 678138.3072 Easting: 1610605.8986



RECORD:
 SET MAG/WASHER
 12-13-02, DCH
 FD MAG/WASHER
 REFA34
 1-13-16, JFO
 SET MAG/WASHER
 11-29-17, JMR



O.D.O.T. DISTRICT 2 SURVEY OFFICE

PERSONNEL

NOTES _____
 H.C. _____
 R.C. _____

REFERENCE NO. 34

DATE 5-22-02
 WEATHER SUNNY
 TEMP. 42

SHEET 39 OF 47

ROUTE S.R. 64
 COUNTY LUCAS
 TOWNSHIP WATERVILLE
 SECTION _____

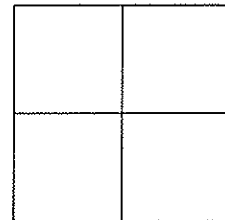
T _____ R _____

TYPE MONUMENT _____
 ON SURFACE - ~~BELOW~~ _____
 LEFT - Q PAV'T - ~~RIGHT~~ _____
4.0 TO LT. EDGE PAVEMENT
 S.L.M. _____

MAG NAIL @ 'B', By others
 PK NAIL @ 'A'

YES
 14,0'

280+07 @ 'A'



Set mag nails
 w/ washers
 12-13-02
 O.C.H.

