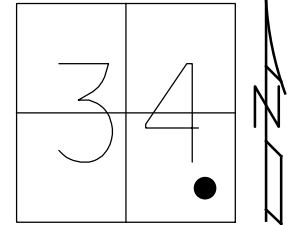


O.D.O.T. DISTRICT 2 SURVEY OFFICE (USE ONLY)

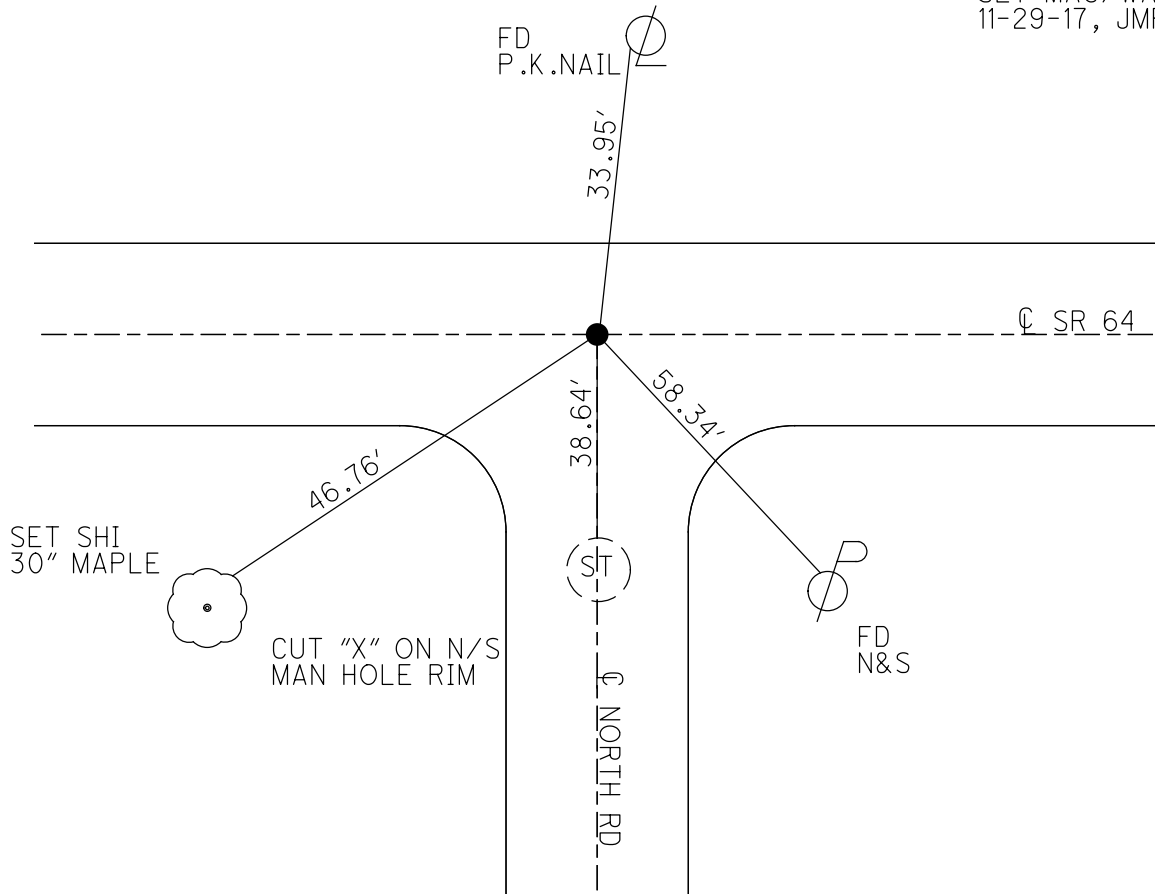
PERSONNEL _____ REFERENCE NO. 34 B SHEET 31 OF 50

NOTES RHOADES DATE 6-15-17 ROUTE SR 64
 H.C. POORE WEATHER CLOUDY COUNTY LUCAS
 R.C. O'DONNELL TEMP. 77° TOWNSHIP WATERVILLE
 _____ SECTION 34
 _____ T 7 N R 9 E

TYPE MONUMENT MAG/WASHER
 ON SURFACE - ~~BELOW~~ ON
~~LEFT - C~~ PAV'T - ~~RIGHT~~ ON
 _____ TO _____ EDGE PAVEMENT
 S.L.M. 283+45
 Grid: Northing: 678317.3453 Easting: 1610360.3816



RECORD:
 SET MAG/WASHER
 12-12-02, DCH
 FD MAG/WASHER
 REFB34
 1-13-16, JFO
 SET MAG/WASHER
 11-29-17, JMR



O.D.O.T. DISTRICT 2 SURVEY OFFICE

PERSONNEL

NOTES _____ ROUSOS _____
 H.C. _____ HOMAN _____
 R.C. _____ MICHALAK _____

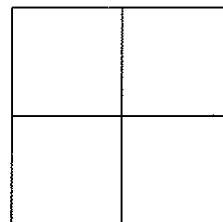
REFERENCE NO. 34-A

DATE 5-22-02
 WEATHER SUNNY
 TEMP. 50

SHEET 40 OF 47

ROUTE S.R. 64
 COUNTY LUCAS
 TOWNSHIP WATERVILLE
 SECTION _____
 T ___ R ___

TYPE MONUMENT _____ PK NAIL - By others
 ON SURFACE - ~~BELOW~~ _____ YES _____
~~LEFT~~ - Q PAV'T - ~~RIGHT~~ _____ YES _____
 _____ TO _____ EDGE PAVEMENT
 S.L.M. _____ 283+66 _____



SET MAG NAIL
 & WASHER
 12-12-02
 D.C.H.

