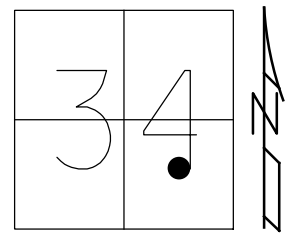


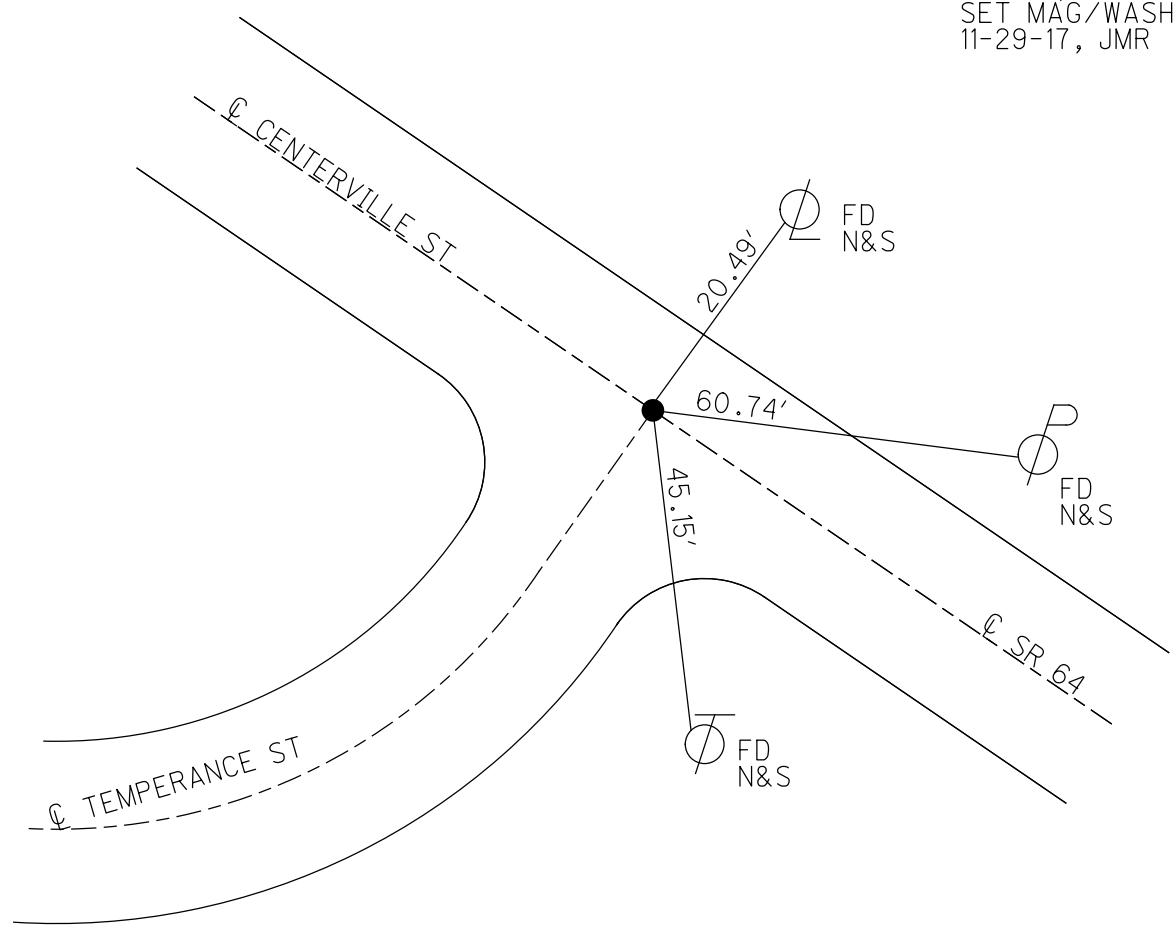
O.D.O.T. DISTRICT 2 SURVEY OFFICE (USE ONLY)

PERSONNEL _____ REFERENCE NO. 35 SHEET 32 OF 50
 NOTES RHOADES DATE 6-15-17 ROUTE SR 64
 H.C. POORE WEATHER CLOUDY COUNTY LUCAS
 R.C. O'DONNELL TEMP. 77° TOWNSHIP WATERVILLE
 _____ SECTION 34
 _____ T 7 N R 9 E

TYPE MONUMENT MAG/WASHER
 ON SURFACE - ~~BELOW~~ ON _____
 LEFT - ☉ PAV'T - ~~RIGHT~~ 1.6'
11.6' TO RT EDGE PAVEMENT
 S.L.M. 285+75
 Grid: Northing: 678453.0896 Easting: 1610174.1404



RECORD:
 SET MAG/WASHER
 12-13-02, DCH
 SET MAG/WASHER
 REF35
 1-14-16, JFO
 SET MAG/WASHER
 11-29-17, JMR



O.D.O.T. DISTRICT 2 SURVEY OFFICE

PERSONNEL

NOTES _____ ROUSOS _____
 H.C. _____ HOMAN _____
 R.C. _____ MICHALAK _____

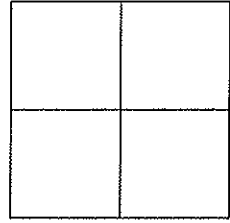
REFERENCE NO. 35

DATE 5-22-02
 WEATHER SUNNY
 TEMP. 42

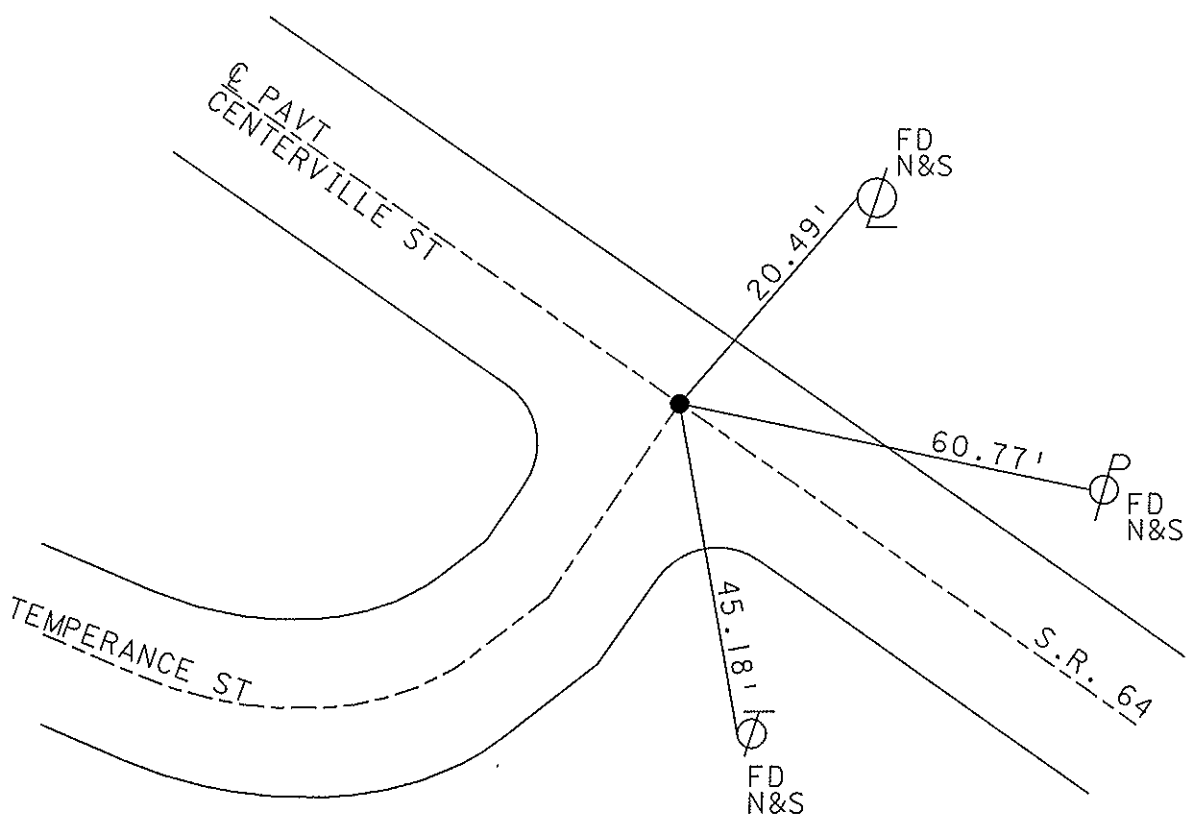
SHEET 41 OF 47

ROUTE S.R. 64
 COUNTY LUCAS
 TOWNSHIP WATERVILLE
 SECTION _____
 T ___ R ___

TYPE MONUMENT _____ P.K. NAIL By others
 ON SURFACE - ~~BELOW~~ _____ YES
 LEFT - Q PAVT - ~~RIGHT~~ _____ 1.6'
11.6' TO RT. EDGE PAVEMENT
 S.L.M. _____ 285+97



SET MAG NAIL
 & WASHER
 12-13-02
 D.C.H.



O.D.O.T. DISTRICT 2 SURVEY OFFICE

PERSONNEL

REFERENCE NO. 35

SHEET 37 OF 49

NOTES LOEHRKE

H.C. CURTIS

R.C. Loce

DATE 8-7-91

WEATHER Clear

TEMP. +75

ROUTE S.R. 64

COUNTY LUCAS

TOWNSHIP WATERVILLE

SECTION _____

Set P.K./WASHER T _____ R _____

TYPE MONUMENT P.K. Nail - ORIGIN UNK.

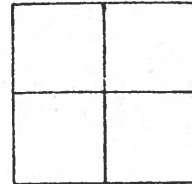
3-5-92

ON SURFACE - BELOW yes

LEFT-o PAV'T. - RIGHT 1.6'

116 TO RT EDGE PAVEMENT

S.L.M. 286 + 61



PAV'T

CENTERVILLE ST.

TEMPERANCE ST.

