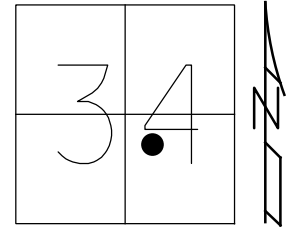


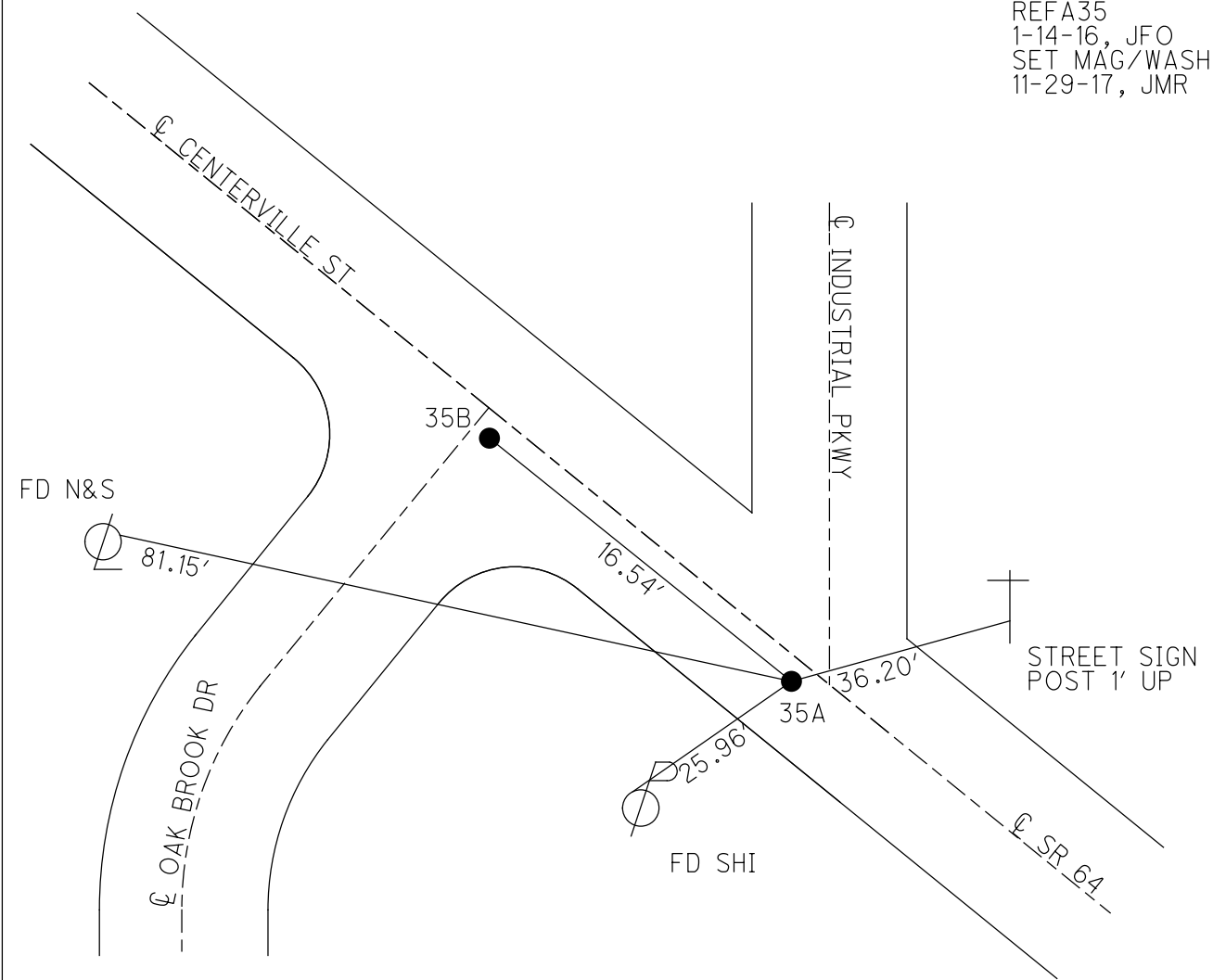
O.D.O.T. DISTRICT 2 SURVEY OFFICE (USE ONLY)

PERSONNEL _____ REFERENCE NO. 35 A SHEET 33 OF 50
 NOTES RHAODES DATE 6-15-17 ROUTE SR 64
 H.C. POORE WEATHER CLOUDY COUNTY LUCAS
 R.C. O'DONNELL TEMP. 74° TOWNSHIP WATERVILLE
 _____ SECTION 34
 _____ T 7 N R 9 E

TYPE MONUMENT MAG/WASHER
 ON SURFACE - ~~BELOW~~ ON
 LEFT - ☉ PAV'T - ~~RIGHT~~ 1.5'
 _____ TO _____ EDGE PAVEMENT
 S.L.M. 296+66
 Grid: Northing: 679096.3707 Easting: 1609293.5154



RECORD:
 SET MAG/WASHER
 12-13-02, DCH
 FD MAG/WASHER
 REFA35
 1-14-16, JFO
 SET MAG/WASHER
 11-29-17, JMR



O.D.O.T. DISTRICT 2 SURVEY OFFICE

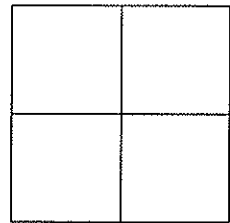
PERSONNEL

NOTES ROUSOS
 H.C. HOMAN
 R.C. MICHALAK

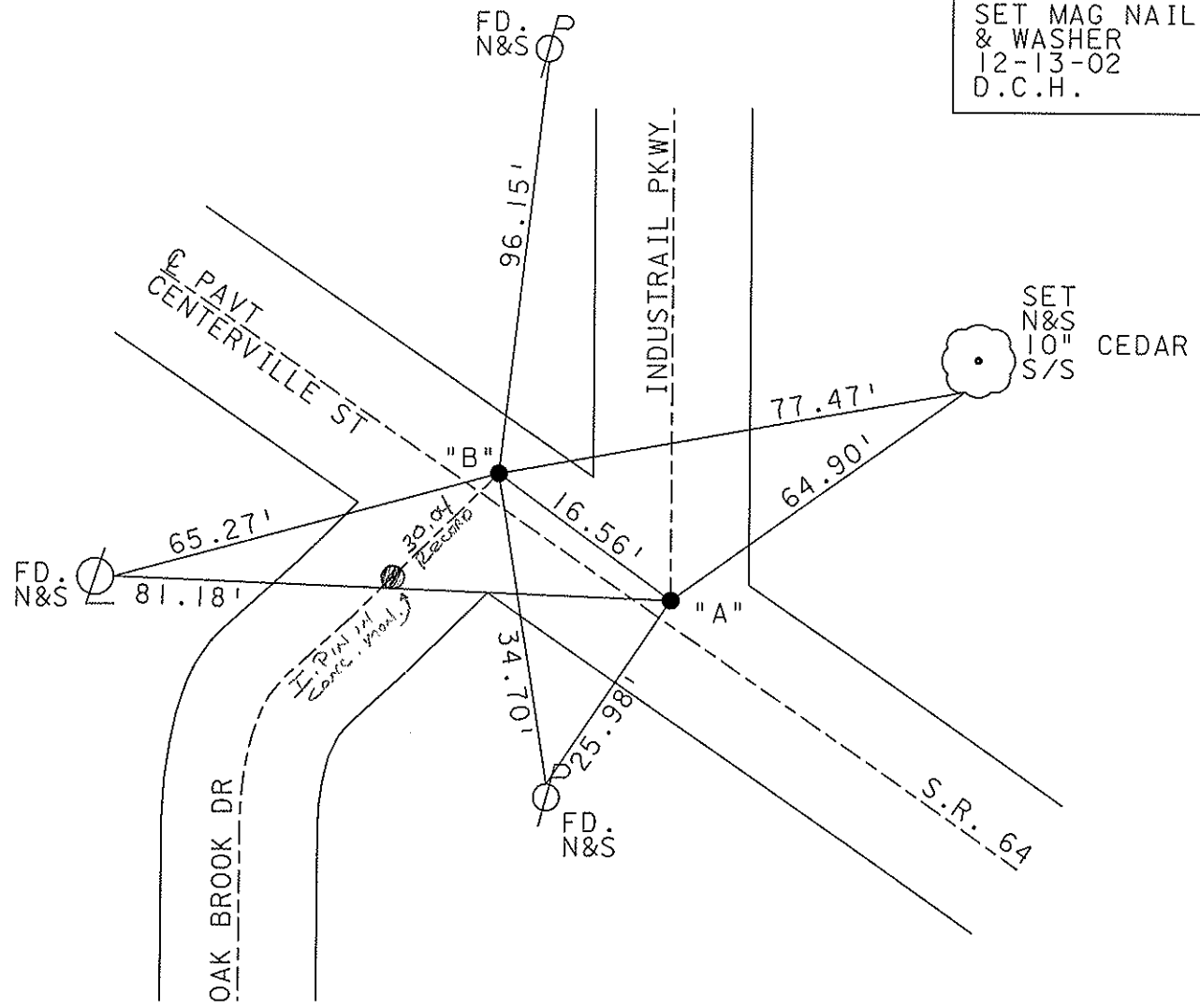
REFERENCE NO. 35A & 35B
 DATE 5-22-02
 WEATHER SUNNY
 TEMP. 42

SHEET 42 OF 47
 ROUTE S.R. 64
 COUNTY LUCAS
 TOWNSHIP WATERVILLE
 SECTION _____
 T ___ R ___

TYPE MONUMENT P.K. NAILS
 ON SURFACE - ~~BELOW~~ YES
 LEFT - Q PAV'T - ~~RIGHT~~ A1.5' B2.3'
 _____ TO _____ EDGE PAVEMENT
 S.L.M. PT. A=296+87 PT. B=297+03



SET MAG NAIL & WASHER
 12-13-02
 D.C.H.



O.D.O.T. DISTRICT 2 SURVEY OFFICE

PERSONNEL

REFERENCE NO. 35A & 35B SHEET 38 OF 49

NOTES LOEHRKE

H.C. CURTIS

R.C. Loce

DATE 8-7-91

WEATHER Clear

TEMP. +80

ROUTE S.R. 64

COUNTY LUCAS

TOWNSHIP WATERVILLE

SECTION _____

T _____ R _____

TYPE MONUMENT P.K. Nails

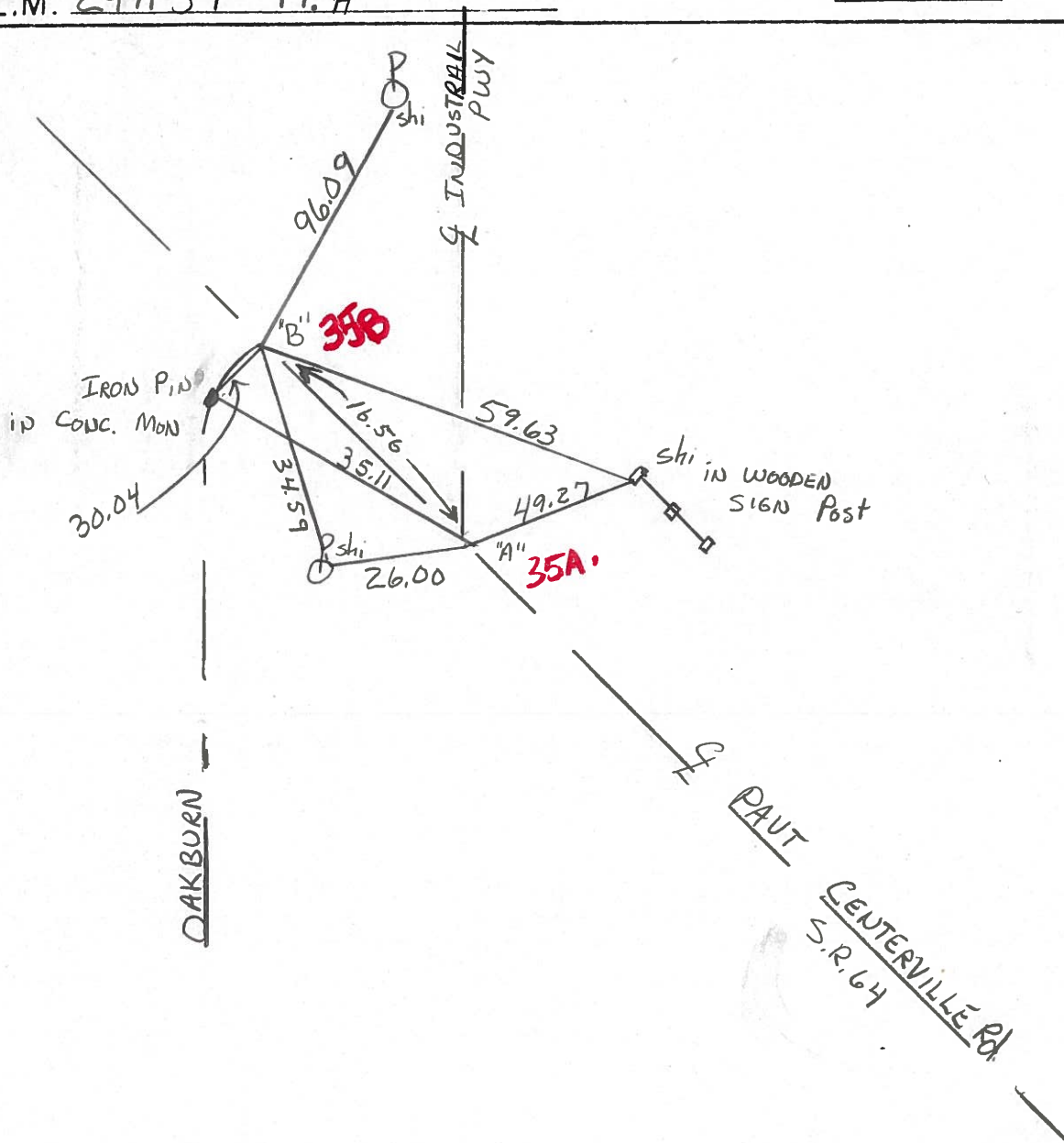
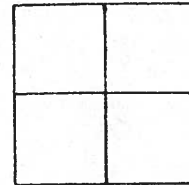
ON SURFACE - BELOW Yes

LEFT- & PAV'T. - RIGHT A-1.5 B-2.3

TO EDGE PAVEMENT

S.L.M. 297+54 Pt. A

Set P.K. NAILS
w/WASHER
3-5-92



PERSONNEL	TITLE	PERSONNEL	TITLE
Stone			
Crew			

COUNTY Lucas DATE 5 April 77

S. R. 64 WEATHER Cold

SEC. Whitehouse TEMP. 38°

DESCRIPTION References to Control Points JOB NO.

LEFT CENTER LINE RIGHT

