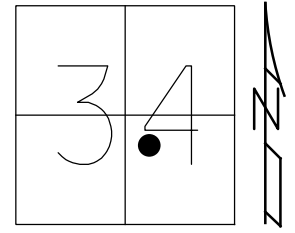


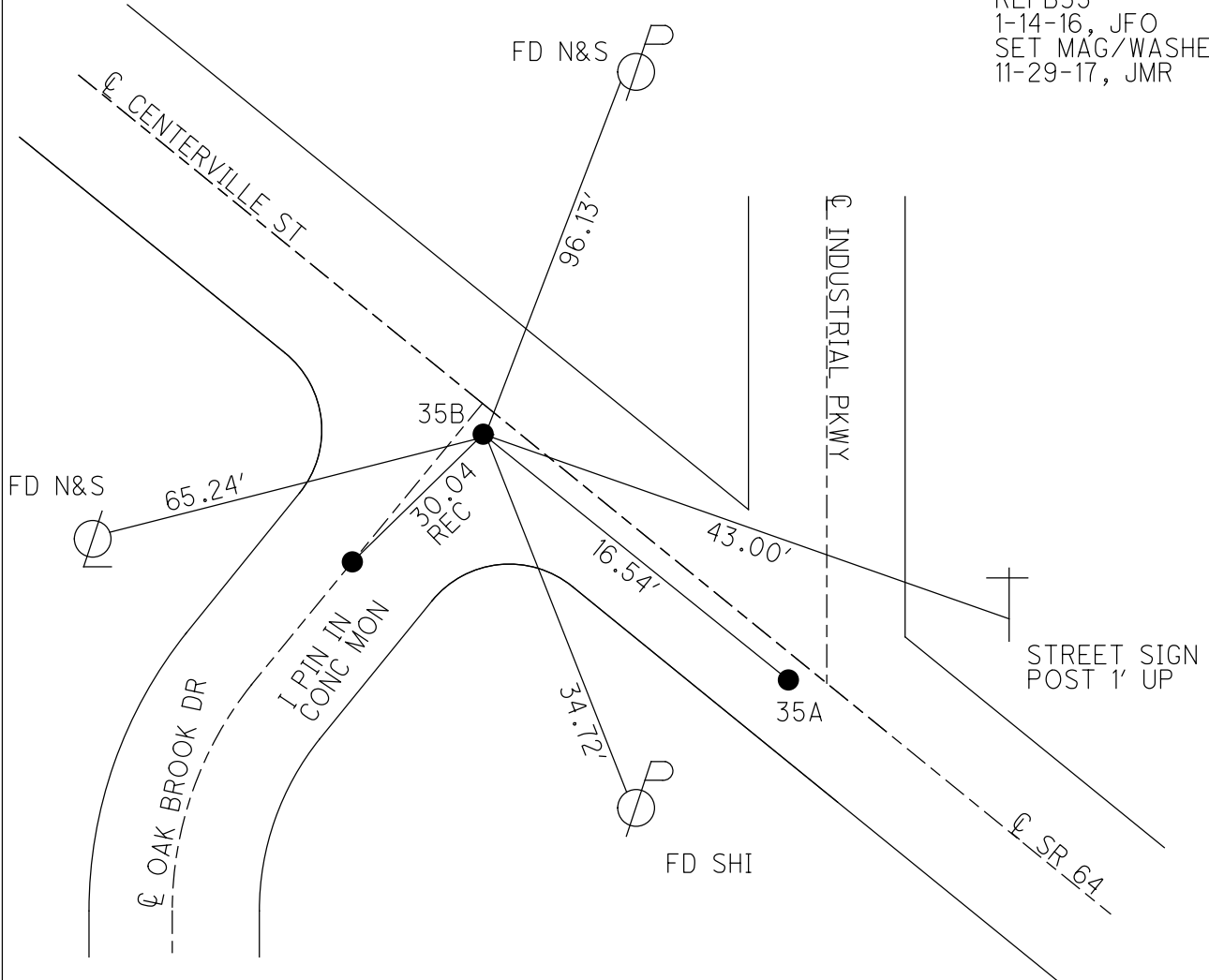
O.D.O.T. DISTRICT 2 SURVEY OFFICE (USE ONLY)

PERSONNEL \_\_\_\_\_ REFERENCE NO. 35 B SHEET 34 OF 50  
 NOTES RHOADES DATE 6-15-17 ROUTE SR 64  
 H.C. POORE WEATHER CLOUDY COUNTY LUCAS  
 R.C. O'DONNELL TEMP. 74° TOWNSHIP WATERVILLE  
 \_\_\_\_\_ SECTION 34  
 \_\_\_\_\_ T 7 N R 9 E

TYPE MONUMENT MAG/WASHER  
 ON SURFACE - ~~BELOW~~ ON \_\_\_\_\_  
 LEFT - ☉ PAV'T - ~~RIGHT~~ 2.3'  
 \_\_\_\_\_ TO \_\_\_\_\_ EDGE PAVEMENT  
 S.L.M. 296+82  
 Grid: Northing: 679105.3000 Easting: 1609279.6505



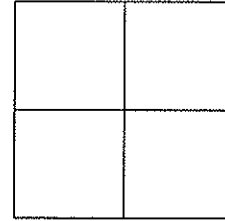
RECORD:  
 SET MAG/WASHER  
 12-13-02, DCH  
 FD MAG/WASHER  
 REFB35  
 1-14-16, JFO  
 SET MAG/WASHER  
 11-29-17, JMR



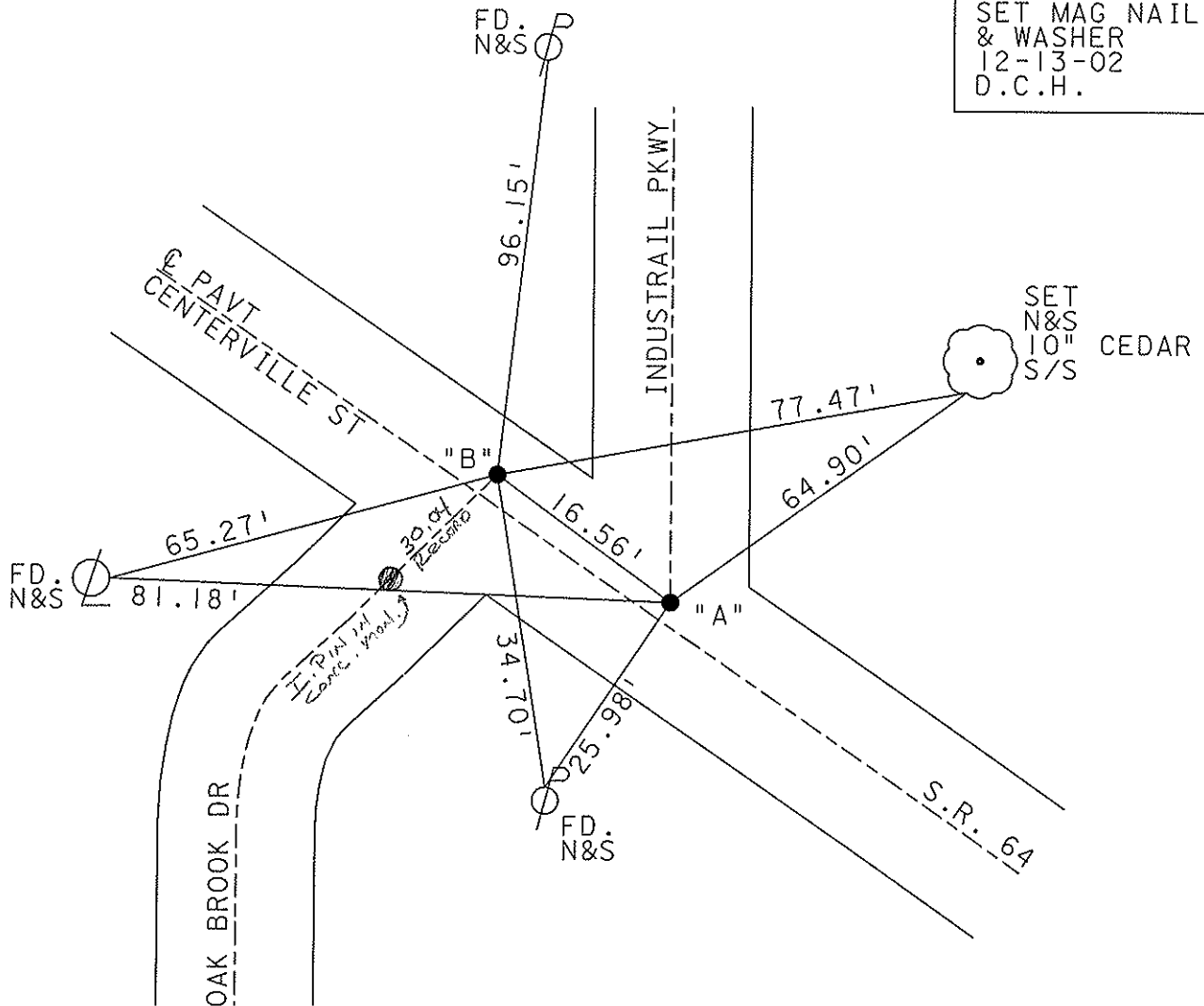
O.D.O.T. DISTRICT 2 SURVEY OFFICE

PERSONNEL	REFERENCE NO. <u>35A &amp; 35B</u>	SHEET <u>42</u> OF <u>47</u>
NOTES <u>ROUSOS</u>	DATE <u>5-22-02</u>	ROUTE <u>S.R. 64</u>
H.C. <u>HOMAN</u>	WEATHER <u>SUNNY</u>	COUNTY <u>LUCAS</u>
R.C. <u>MICHALAK</u>	TEMP. <u>42</u>	TOWNSHIP <u>WATERVILLE</u>
		SECTION _____
		T ___ R ___

TYPE MONUMENT \_\_\_\_\_ P.K. NAILS \_\_\_\_\_  
 ON SURFACE - ~~BELOW~~ \_\_\_\_\_ YES \_\_\_\_\_  
 LEFT - Q PAV'T - ~~RIGHT~~ A1.5' B2.3'  
 \_\_\_\_\_ TO \_\_\_\_\_ EDGE PAVEMENT  
 S.L.M. \_\_\_\_\_ PT. A=296+87 PT. B=297+03



SET MAG NAIL  
& WASHER  
12-13-02  
D.C.H.



O.D.O.T. DISTRICT 2 SURVEY OFFICE

PERSONNEL

REFERENCE NO. 35A & 35B SHEET 38 OF 49

NOTES LOEHRKE

H.C. CURTIS

R.C. LUCE

DATE 8-7-91

WEATHER Clear

TEMP. +80

ROUTE S.R. 64

COUNTY LUCAS

TOWNSHIP WATERVILLE

SECTION \_\_\_\_\_

T \_\_\_\_\_ R \_\_\_\_\_

TYPE MONUMENT P.K. Nails

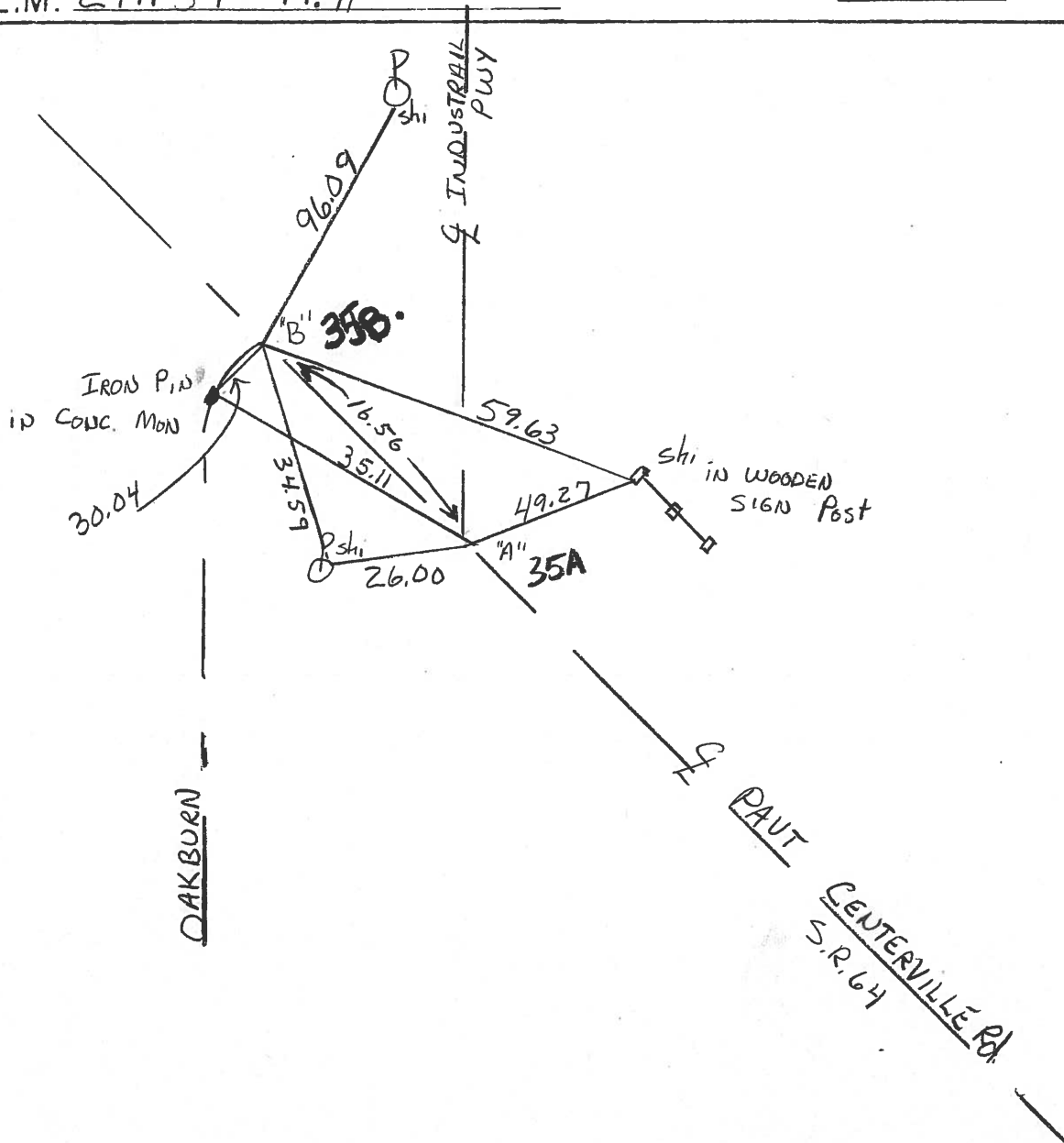
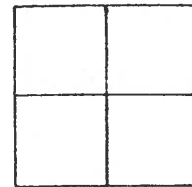
ON SURFACE - ~~BELOW~~ Yes

LEFT- & PAV'T. - ~~RIGHT~~ A-1.5 B-2.3

TO EDGE PAVEMENT

S.L.M. 297+54 Pt. A

Set P.K. NAILS  
w/WASHER  
3-5-92



County Lucas S.R. #64

Date 29 Jan. 85

Township \_\_\_\_\_

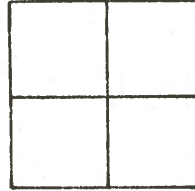
Weather Cold

Section \_\_\_\_\_

Temp. 25°

T N, R E

Personnel I. Stone



R. Michalek

D. Curtis

J. Housholder

REF. No. 35

**35B**

