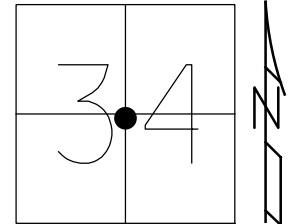


O.D.O.T. DISTRICT 2 SURVEY OFFICE (USE ONLY)

PERSONNEL _____ REFERENCE NO. 36 SHEET 35 OF 50
 NOTES RHOADES DATE 6-15-17 ROUTE SR 64
 H.C. POORE WEATHER CLOUDY COUNTY LUCAS
 R.C. O'DONNELL TEMP. 74° TOWNSHIP WATERVILLE
 _____ SECTION 34
 _____ T 7 N R 9 E

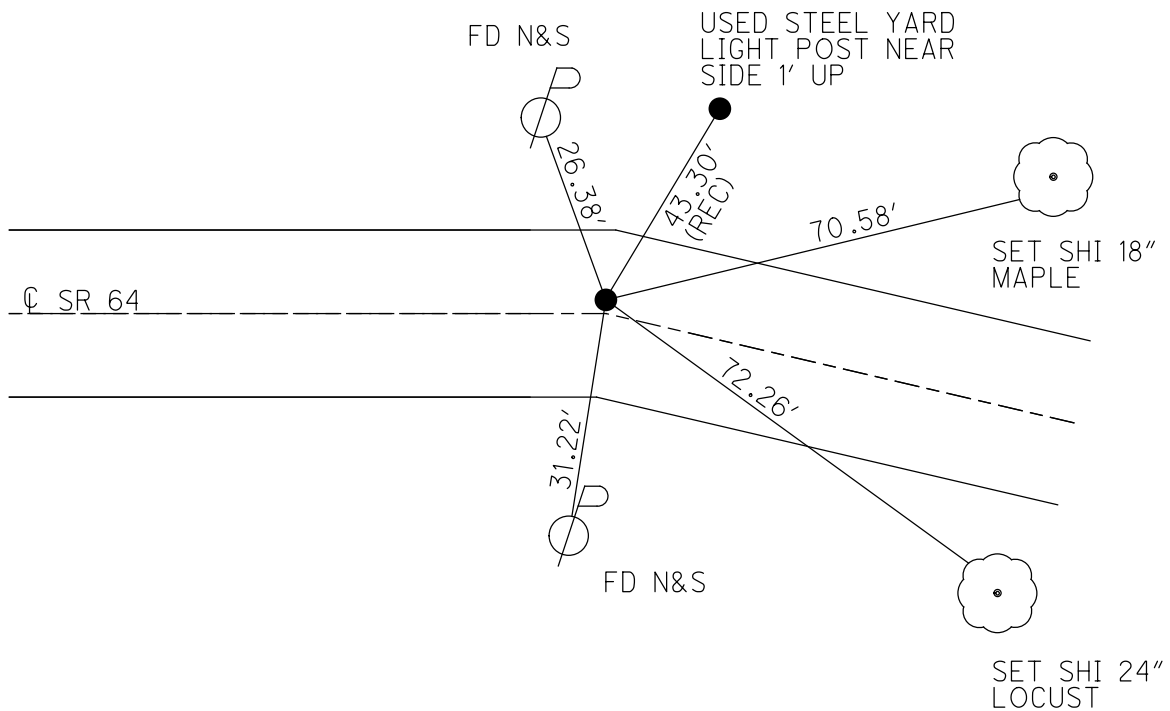
TYPE MONUMENT MAG/WASHER
 ON SURFACE - ~~BELOW~~ ON _____
~~LEFT~~ - CL PAV'T - RIGHT 3.5'
 _____ TO _____ EDGE PAVEMENT
 S.L.M. 299+53.96



Grid: Northing: 679265.681 Easting: 1609060.0624

RECORD:
 SET MAG/WASHER
 12-13-02, DCH
 FD MAG/WASHER
 REF36
 1-14-16, JFO
 SET MAG/WASHER
 11-29-17, JMR

RES
 #11238



POINT 37 NOT FOUND
 (P.K. BY OTHERS)
 3.44' WEST (RECORD)

O.D.O.T. DISTRICT 2 SURVEY OFFICE

PERSONNEL

NOTES _____ ROUSOS _____
 H.C. _____ HOMAN _____
 R.C. _____ MICHALAK _____

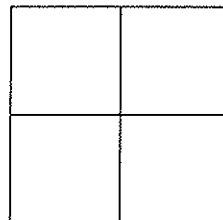
REFERENCE NO. ³⁶ & ₃₇

DATE 5-22-02
 WEATHER SUNNY
 TEMP. 52

SHEET 43 OF 47

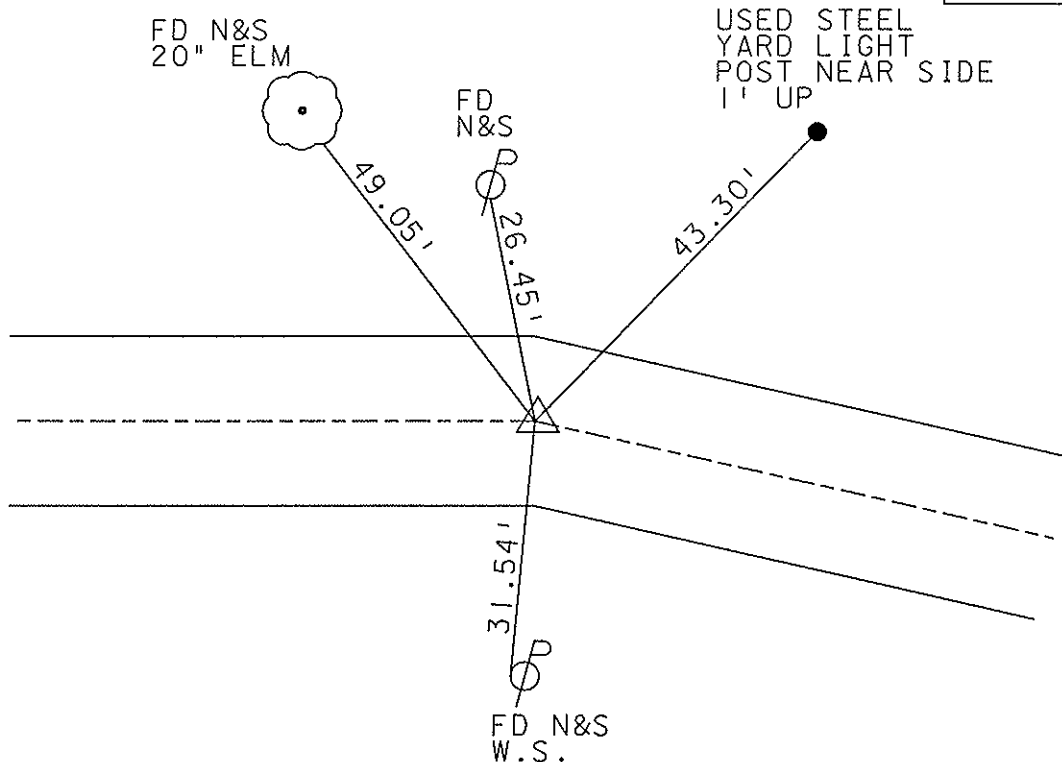
ROUTE S.R. 64
 COUNTY LUCAS
 TOWNSHIP WATERVILLE
 SECTION _____
 T ___ R ___

TYPE MONUMENT ^{SMALL} R.R. SPIKE
 ON SURFACE - ~~BELOW~~ YES
~~LEFT~~ - Q PAV'T - ~~RIGHT~~ YES
 _____ TO _____ EDGE PAVEMENT
 S.L.M. 299+76



Res.
11238

SET MAG NAIL
& WASHER
12-13-02
D.C.H.



POINT 37 NOT FOUND
 (P.K. By others)
 3.44' west (RECORD)

O.D.O.T. DISTRICT 2 SURVEY OFFICE

PERSONNEL

REFERENCE NO. 36 & 37

SHEET 39 OF 49

NOTES LOEHRKE

H.C. CURTIS

R.C. LUCE

DATE 8-7-91

WEATHER Clear

TEMP. +80

ROUTE S.R. 64

COUNTY LUCAS

TOWNSHIP Waterville

SECTION _____

T _____ R _____

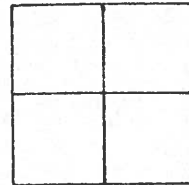
TYPE MONUMENT Sm R.R. Spike ³⁶ P.K. Nail ³⁷

ON SURFACE - BELOW Yes

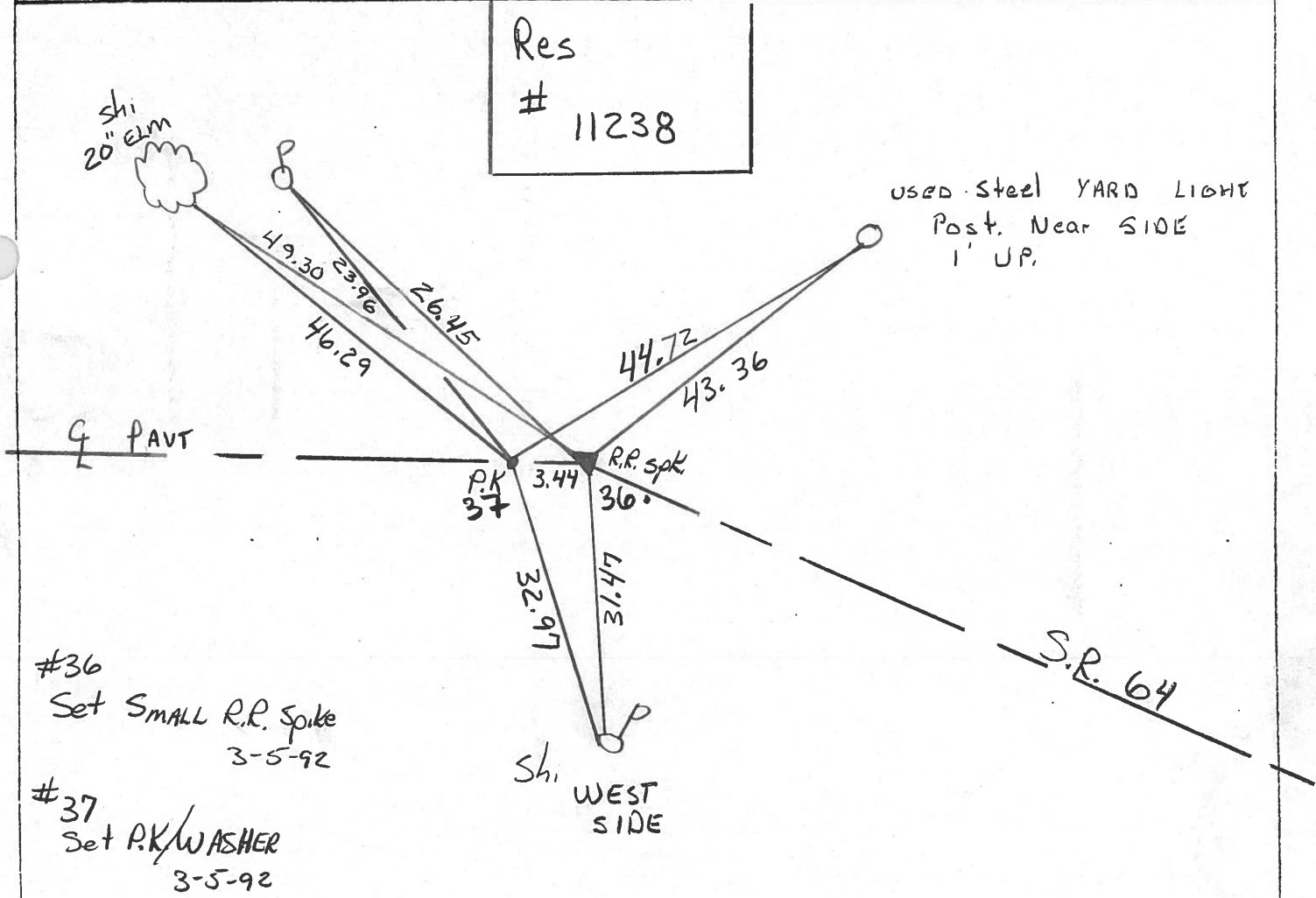
~~LEFT~~ - C PAV'T. - RIGHT 4.6

^{P436} 4.8 TO R EDGE PAVEMENT

S.L.M. 300+42



Res
11238



#36
Set SMALL R.R. Spike
3-5-92

#37
Set P.K. WASHER
3-5-92

| PERSONNEL | TITLE | PERSONNEL | TITLE |
|-----------|-------|-----------|-------|
| Steve | | | |
| E | | | |
| Crew | | | |

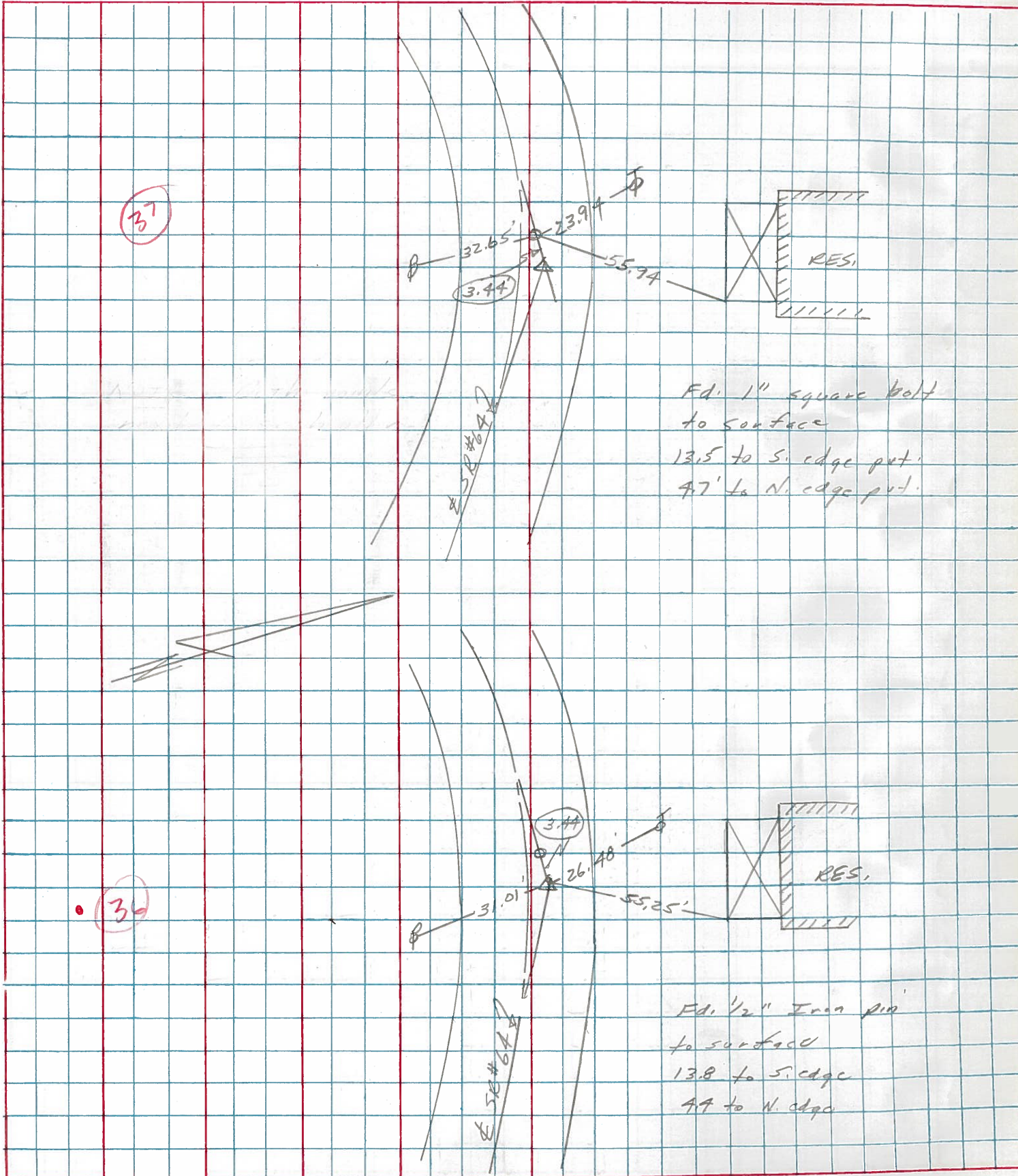
COUNTY Lucas DATE 7 April 77

S. R. 64 WEATHER Cool

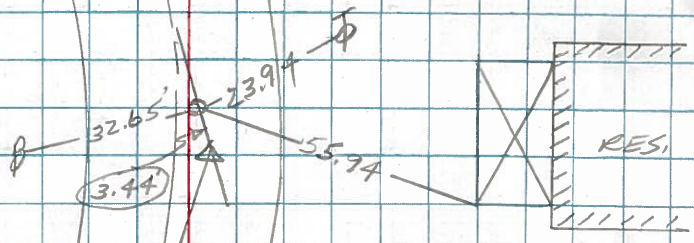
SEC. Whitehouse - West TEMP. 45°

DESCRIPTION References to Central Points JOB NO.

LEFT CENTER LINE RIGHT

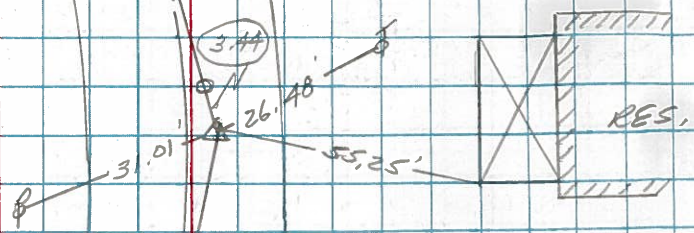


37



Fd. 1" square bolt to surface
13.5 to S. edge put.
47' to N. edge put.

36



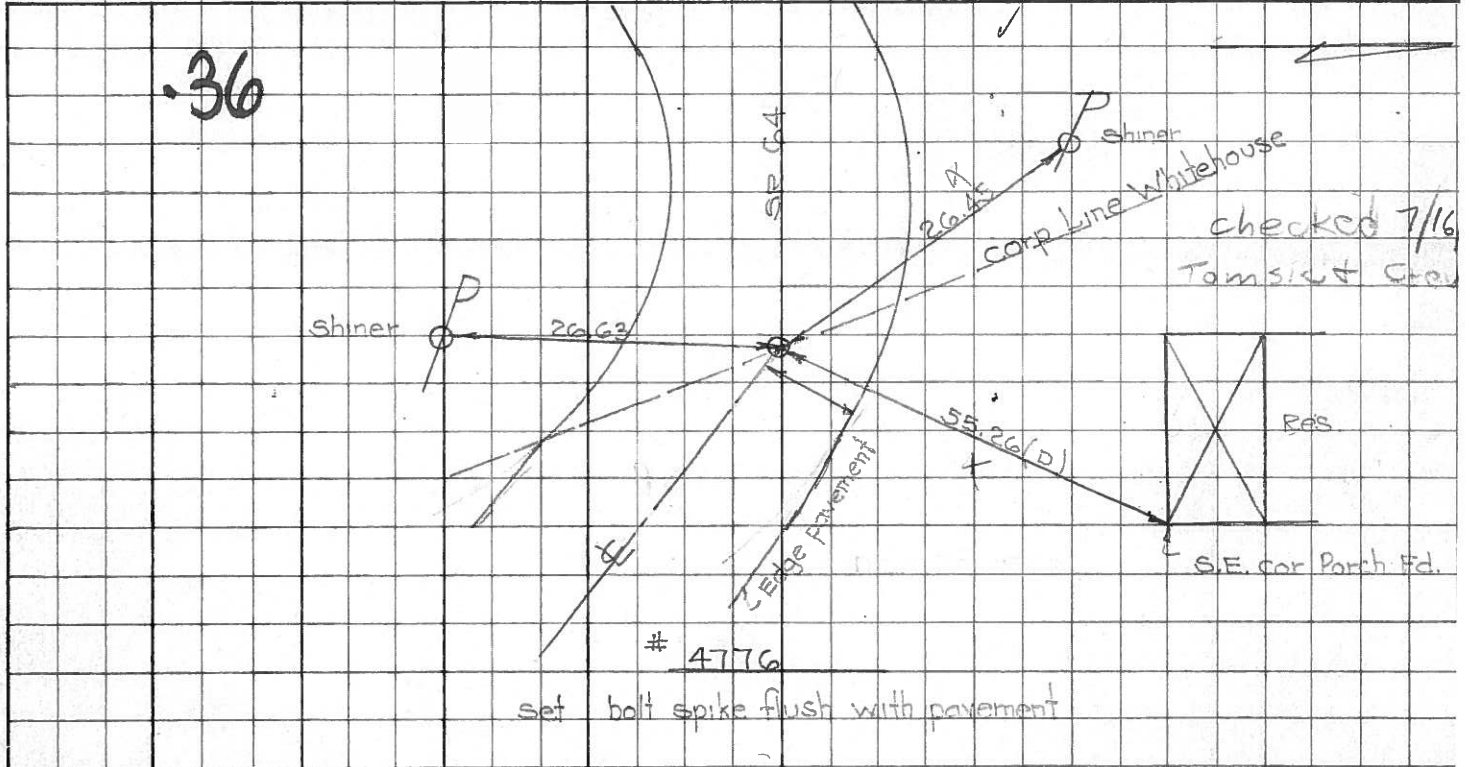
Fd. 1/2" Iron pin to surface
13.8 to S. edge
47 to N. edge

| PERSONNEL | TITLE | PERSONNEL | TITLE | COUNTY | DATE | WEATHER | TEMP. |
|-------------|-------|-----------|-------|----------|--------------|---------|-------|
| D. Curtis | | | | Lucas | Aug. 1, 1968 | mild | 75°± |
| J. Teal | | | | S. R. 64 | | | |
| J. Brindley | | | | SEC. | | | |

DESCRIPTION S.R. 64 - Ref. Mon. & Control Points JOB NO. 02994(0)

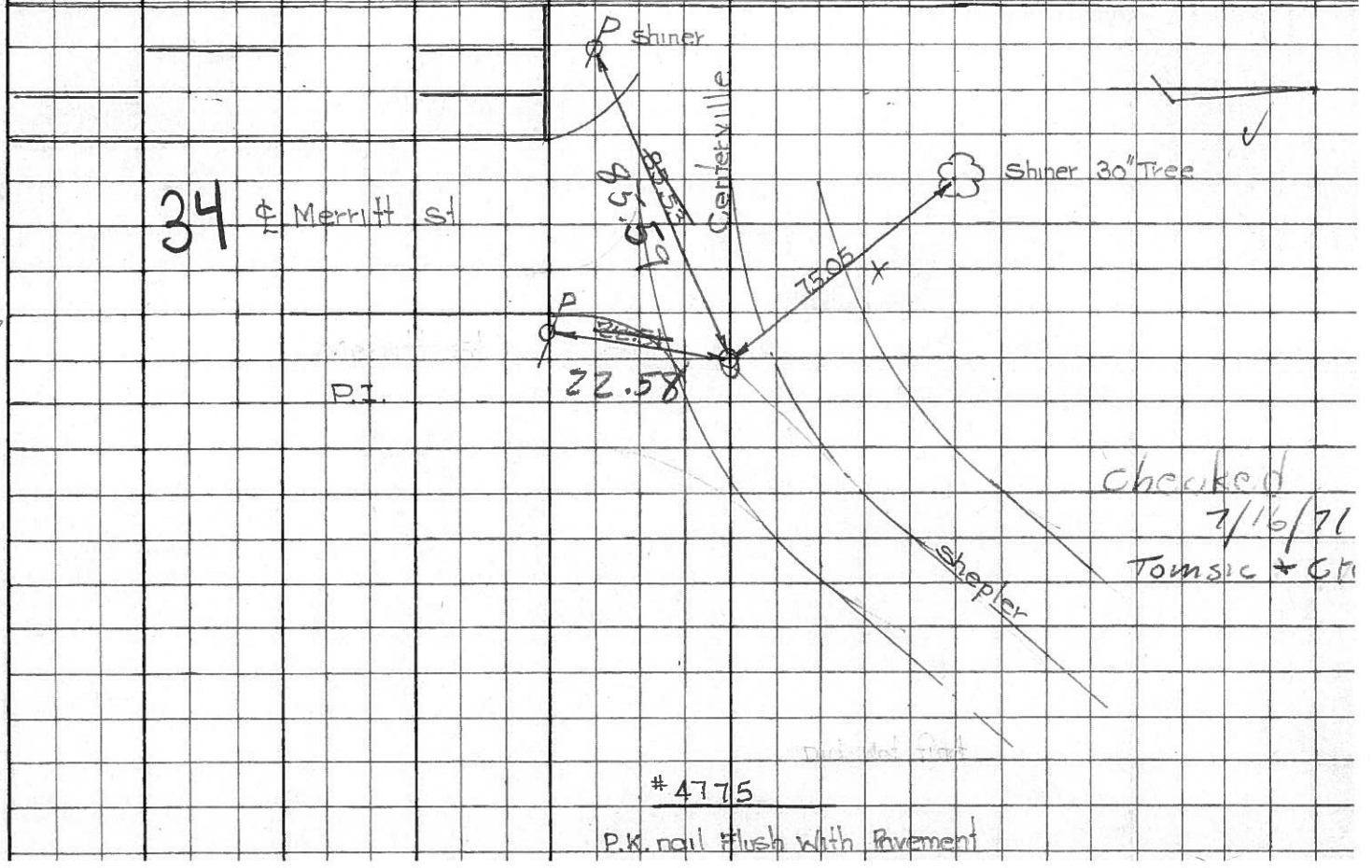
#212
Whitehouse
Comp.
L.H.W.

36



Int.
Shepler
of
Centerville

34



PERSONNEL TITLE PERSONNEL TITLE

COUNTY Lucas DATE 2 Mar. 66

Stone

Beck

Schroder

S. R. #64

WEATHER Mild

SEC. whitehouse - W.

TEMP. 50°

DESCRIPTION

References To Central Pts.

JOB NO.

LEFT

CENTER LINE

RIGHT

N&S $\frac{1}{2}$ Sec. 2

None

.29

Int. Providence St.

40.31'

N.E. To Shiner in' L.P. (D)

Fd. 1" I. Pin

43.18'

S.E. To Shiner in' L.P. (D)

7" Below Surface

46.55'

N.W. To Shiner in' L.P. (D)

52.28'

S.W. To Shiner in' P.P. (D)

RT Δ = Lt.

None

Near Int. Lucas St.

Int. Shepler St.

None

& Providence St.

34

Int. Shepler St. &

22.51'

S.S.W. To Shiner in' P.P. (D)

Centerville St.

54.84'

N. To S.W. Cor. Fdn. To House (D)

Δ = Rt.

85.53'

W. To Shiner in' P.P. (D)

Fd. Square Nut

75.05'

W.N.W. To Shiner in' 30" Tree (D)

To Surface

36

#212

E&W $\frac{1}{2}$ Sec. 34 & 35

55.26'

N. To S.E. Cor. Porch Fdn. (D)

Whitehouse Corp. Linc

26.45'

N.W. To Shiner in' T.P. (D)

Fd. 1" I. Pin

26.63'

S. To Shiner in' P.P. (D)

2" Below Surface

Reed