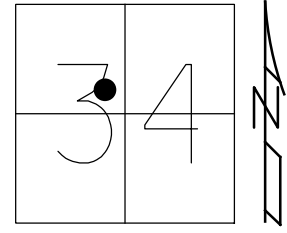


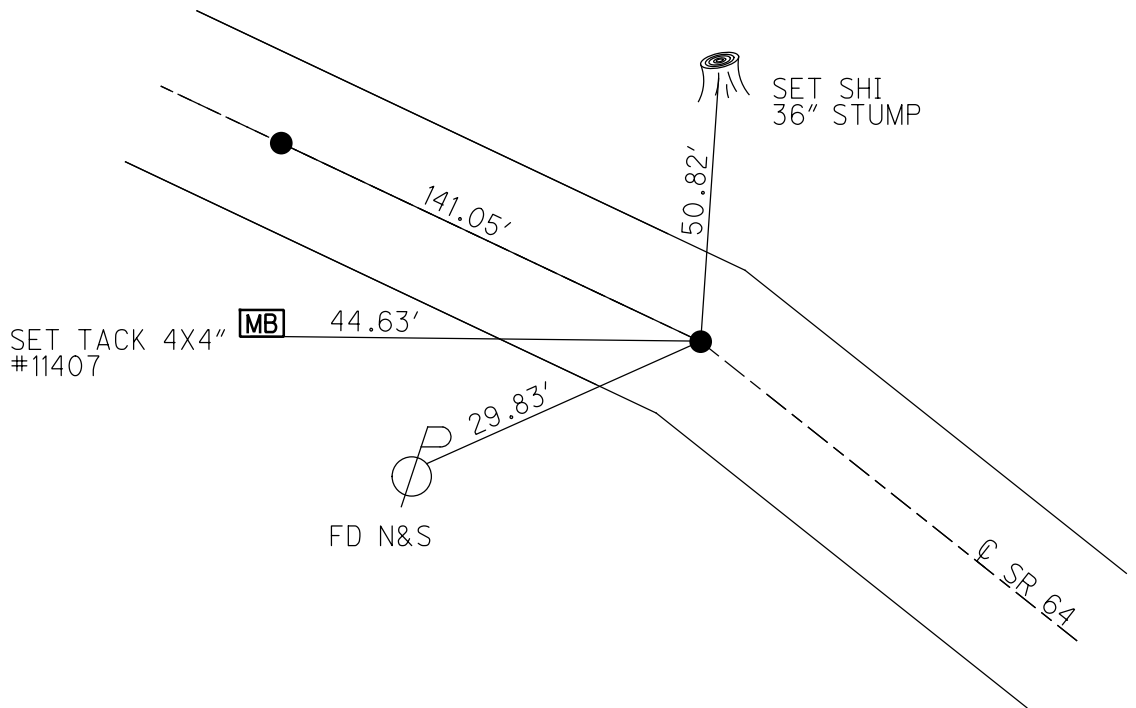
O.D.O.T. DISTRICT 2 SURVEY OFFICE (USE ONLY)

PERSONNEL _____ REFERENCE NO. 38 SHEET 36 OF 50
 NOTES RHOADES DATE 6-15-17 ROUTE SR 64
 H.C. POORE WEATHER CLOUDY COUNTY LUCAS
 R.C. O'DONNELL TEMP. 74° TOWNSHIP WATERVILLE
 _____ SECTION 34
 _____ T 7 N R 9 E

TYPE MONUMENT MAG/WASHER
 ON SURFACE - ~~BELOW~~ ON
~~LEFT~~ - ☉ PAV'T - RIGHT 1.3'
8.2' TO RT EDGE PAVEMENT
 S.L.M. 307+13.91
 Grid: Northing: 679631.7302 Easting: 1608394.0781



RECORD:
 SET MAG/WASHER
 12-13-02, DCH
 FD MAG/WASHER
 REF38
 1-14-16, JFO
 SET MAG/WASHER
 11-29-17, JMR



O.D.O.T. DISTRICT 2 SURVEY OFFICE

PERSONNEL

NOTES ROUSOS
 H.C. HOMAN
 R.C. MICHALAK

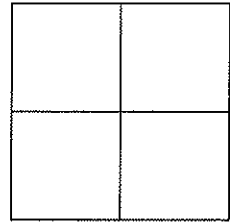
REFERENCE NO. 38

DATE 5-22-02
 WEATHER SUNNY
 TEMP. 52

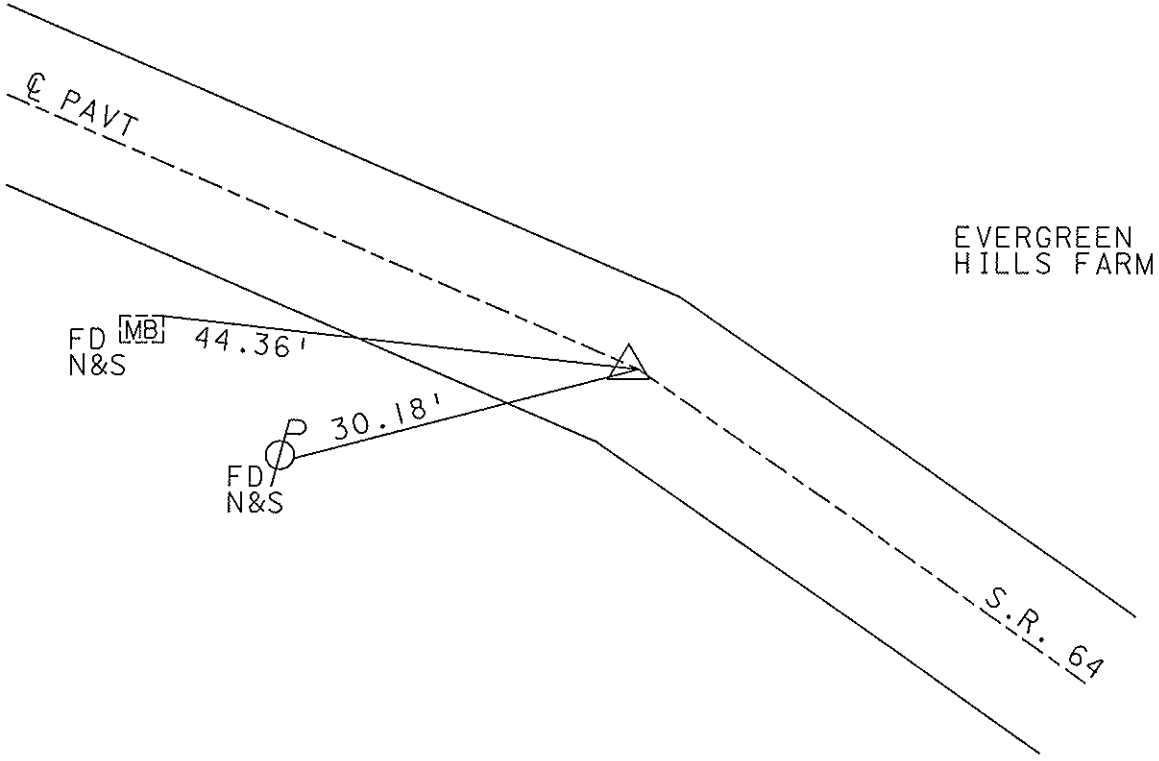
SHEET 44 OF 47

ROUTE S.R. 64
 COUNTY LUCAS
 TOWNSHIP WATERVILLE
 SECTION _____
 T ___ R ___

TYPE MONUMENT BOAT SPIKE
 ON SURFACE - ~~BELOW~~ YES
~~LEFT~~ - Q PAVT - RIGHT 1.3'
8.2' TO RT. EDGE PAVEMENT
 S.L.M. 307+35 309+35



SET MAG NAIL
 & WASHER
 12-13-02
 D.C.H.



O.D.O.T. DISTRICT 2 SURVEY OFFICE

PERSONNEL

REFERENCE NO. 38

SHEET 40 OF 49

NOTES LOEHRKE

H.C. CURTIS

R.C. LYCE

DATE 8-7-91

WEATHER Clear

TEMP. +80

ROUTE S.R. 64

COUNTY LUCAS

TOWNSHIP WATERVILLE

SECTION _____

T _____ R _____

set P.K. / WASHER
3-5-92

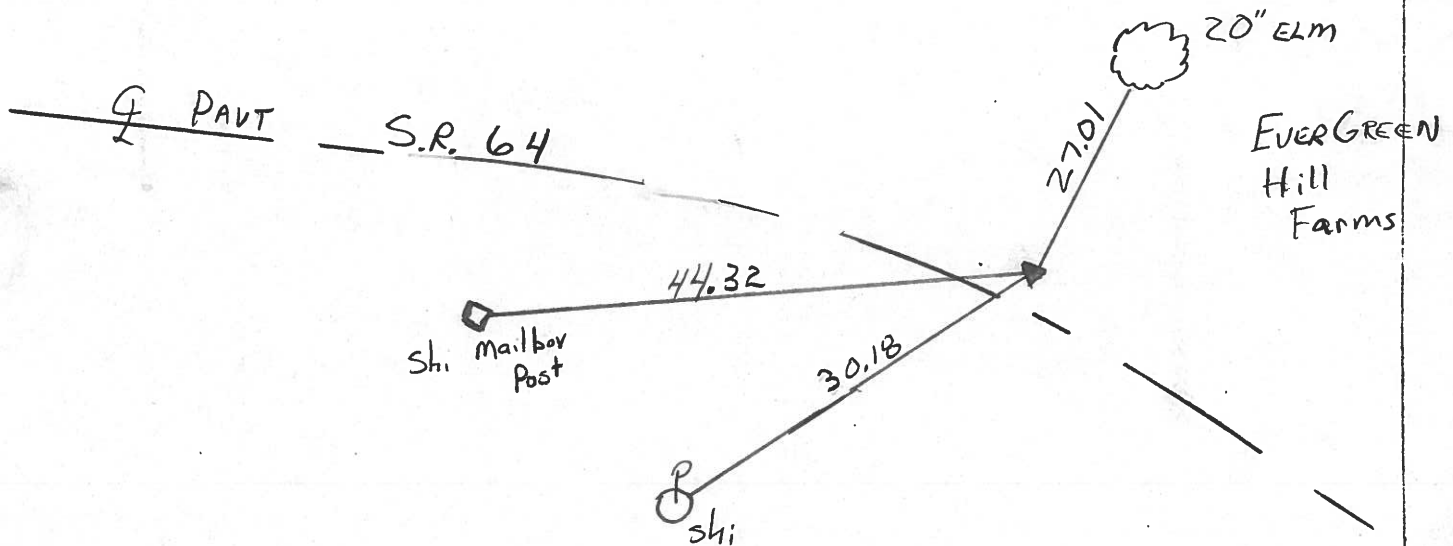
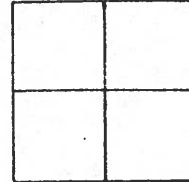
TYPE MONUMENT Boat Spike

ON SURFACE - BELOW Yes

LEFT - Q PAV'T. - RIGHT 1.3

B.Z. TO R+ EDGE PAVEMENT

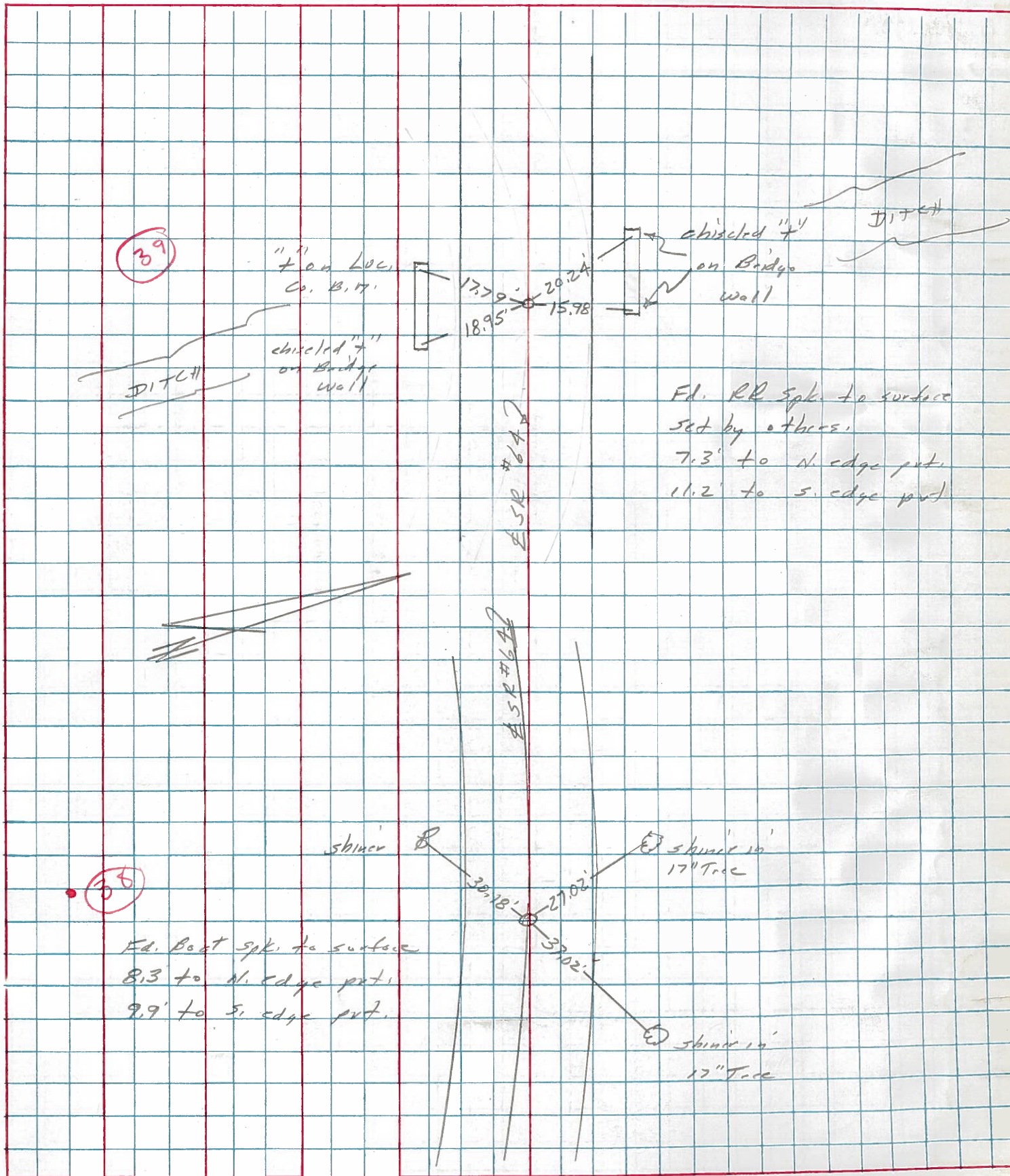
S.L.M. 308+02



PERSONNEL	TITLE	PERSONNEL	TITLE	COUNTY	DATE	WEATHER	TEMP.
Stage				Lucas	7 April 77	Cool	45°
Crew				S. R. 64			
				SEC. West of Whitehouse			

DESCRIPTION References to Control Points JOB NO. _____

LEFT CENTER LINE RIGHT



PERSONNEL TITLE PERSONNEL TITLE

COUNTY Lucas

DATE Aug. 1, 1968

D. Curtis

S. R. Co 4

WEATHER mild

J. Teal

SEC.

TEMP. 75°±

J. Brindley

DESCRIPTION S.R. Co 4 - Ref. Mon. & Control Points

JOB NO. 02994(0)

LEFT

CENTER LINE

RIGHT

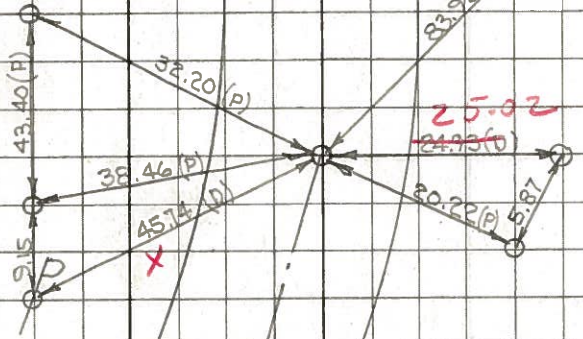
TOWN RANGE
CORNER OF SECTION

40

#210 (old)

Δ = Lt

Shiner



Shiner 40" Tree

Wit. Mon.

#4778

Spike flush with Pavement

checked 7/19/71
Tomasic & crew

TOWN RANGE
CORNER OF SECTION

.38

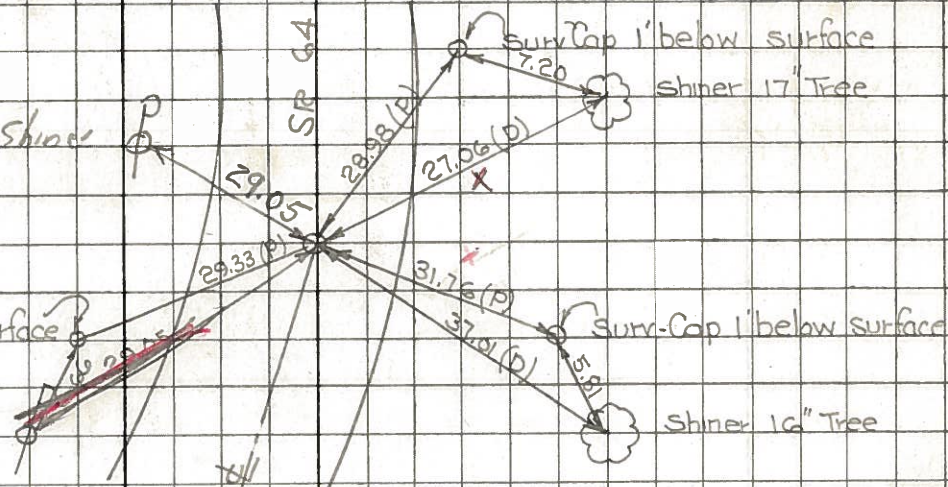
#211 (old)

Δ = Lt

New Shiner

Surv. Cap. 1' below surface

Shiner Gone



Surv. Cap 1' below surface
Shiner 17" Tree

Surv. Cap 1' below surface

Shiner 16" Tree

#4777

Spike at surface

checked 7/19/71
Tomasic & crew

PERSONNEL TITLE PERSONNEL TITLE

COUNTY Lucas DATE 3 Mar. 66

Stone

S. R. #64 WEATHER Mild

Back

Brindley

SEC. Whitehouse - W. TEMP. 50°

Schroder

DESCRIPTION LEFT *Pnts To Control Pts.* CENTER LINE RIGHT JOB NO.

.38

#211	Δ = Lt	27.06'	N.W. To Skiner in 17" Tree (D)
	F. R.S. pt. Be + Over	37.01'	N. To Skiner in 16" Tree (D)
	1" Blow Surface	29.05'	S.W. To Skiner in P.P. (D)

40

#210	Δ = L	24.93'	N. To Cen. W. T. Moss. (D)
	F. Brass Plate	45.74'	S.E. To Skiner in P.P. (D)
	" Below Surface	83.93'	W.N.W. To Skiner in 40' Tree (D)

41

#209	nt S.P. 295	8.04'	N.W. To Skiner in 15" Tree (D)
	d. 3/4" Bolt	56.73'	N.E. To Skiner in T.P. (D)
	2" above Surface	44.99'	S.E. To Cen. W. T. Moss. (D)
		8.04'	S.E. To Skiner in T. (D)
		4.63'	S.W. To Skiner in P.P. (D)

#208	Δ = Rt		None
------	--------	--	------

#207			None
------	--	--	------

#206			None
------	--	--	------

✓ out

✓ out

✓ out

/

/

/