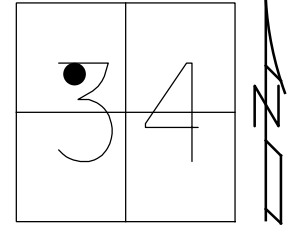


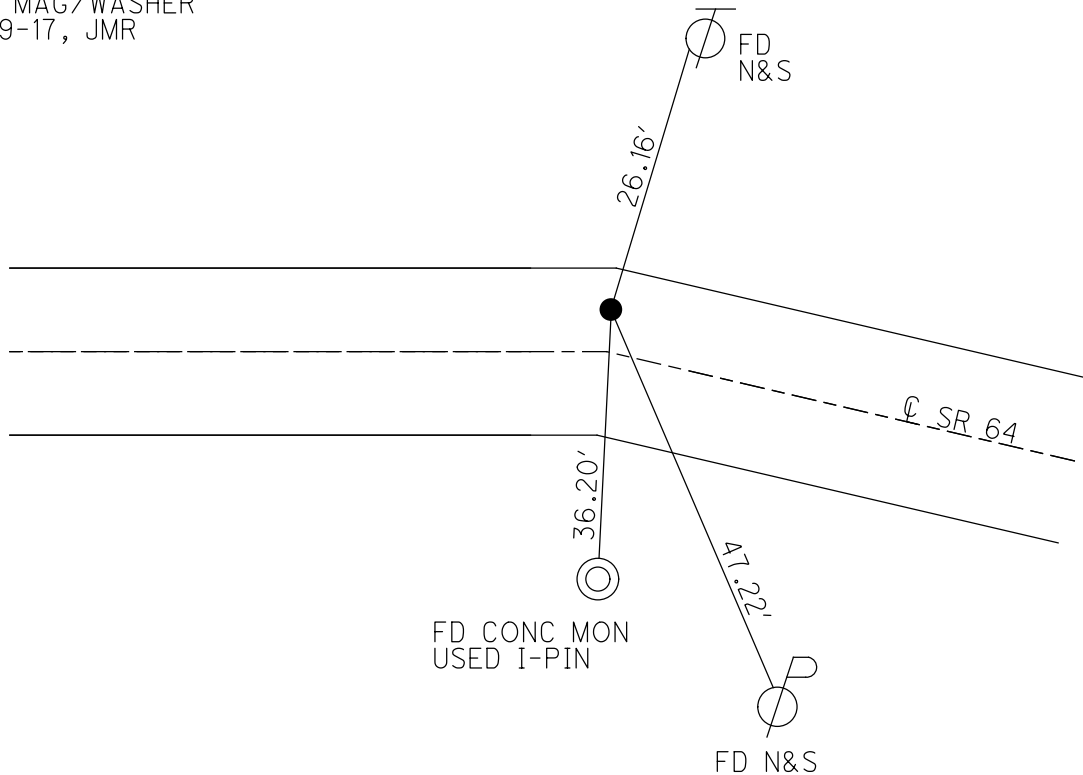
O.D.O.T. DISTRICT 2 SURVEY OFFICE (USE ONLY)

PERSONNEL _____ REFERENCE NO. 40 SHEET 38 OF 50
 NOTES RHOADES DATE 6-15-17 ROUTE SR 64
 H.C. POORE WEATHER CLOUDY COUNTY LUCAS
 R.C. O'DONNELL TEMP. 72° TOWNSHIP WATERVILLE
 _____ SECTION 34
 _____ T 7 N R 9 E

TYPE MONUMENT 3 1/2" BRASS DISK
~~ON SURFACE~~ - BELOW 5"
~~LEFT~~ - CL PAV'T - RIGHT 5.2'
3.9' TO RT EDGE PAVEMENT
 S.L.M. 322+15.57
 Grid: Northing: 680326.227 Easting: 1607062.7037



RECORD:
 SET P.K.NAIL/WASHER
 8-7-02, DCH
 FD MAG NAIL
 REF40
 1-14-16, JFO
 REREF40 DISK
 6-15-17, JFO
 SET MAG/WASHER
 11-29-17, JMR



O.D.O.T. DISTRICT 2 SURVEY OFFICE

PERSONNEL

REFERENCE NO. 40

SHEET 46 OF 47

NOTES ROUSOS

DATE 5-22-02

ROUTE S.R. 64

H.C. HOMAN

WEATHER SUNNY

COUNTY LUCAS

R.C. MICHALAK

TEMP. 52

TOWNSHIP WATERVILLE

SECTION _____

T____ R____

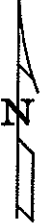
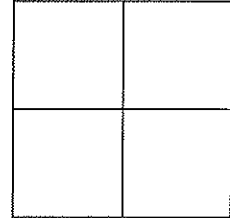
TYPE MONUMENT _____ P.K. NAIL _____

ON SURFACE - ~~BELOW~~ _____ YES _____

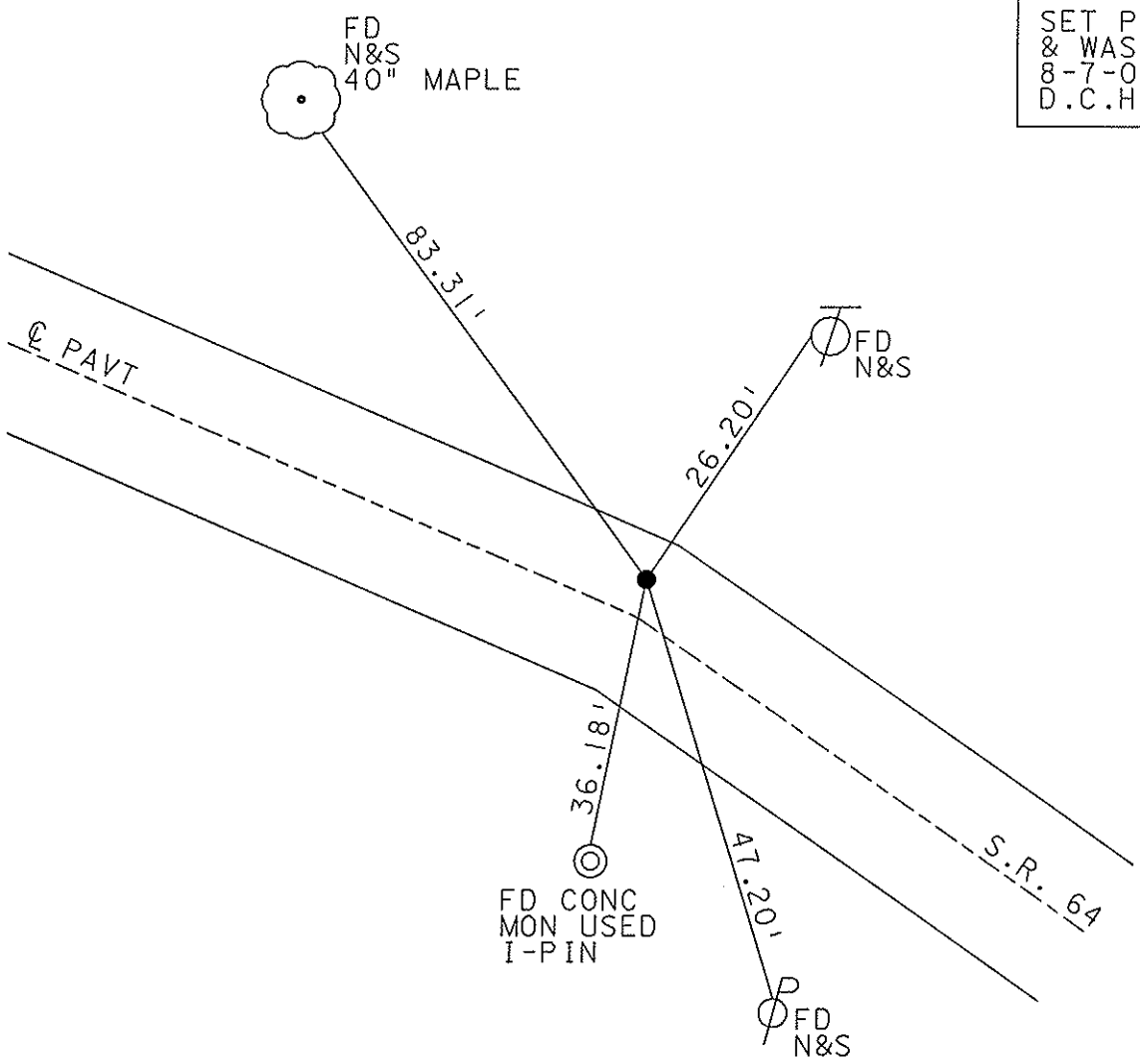
LEFT - ℄ PAVT - ~~RIGHT~~ _____ 5.2' _____

3.9' TO RT. EDGE PAVEMENT

S.L.M. _____ 322+40 _____



SET PK NAIL
& WASHER
8-7-02
D.C.H.



O.D.O.T. DISTRICT 2 SURVEY OFFICE

PERSONNEL _____

REFERENCE NO. 40

SHEET 42 OF 49

NOTES Loehrke

H.C. Curtis

R.C. Luce

DATE 8-7-91

WEATHER Clear

TEMP. +82

ROUTE S.R. 64

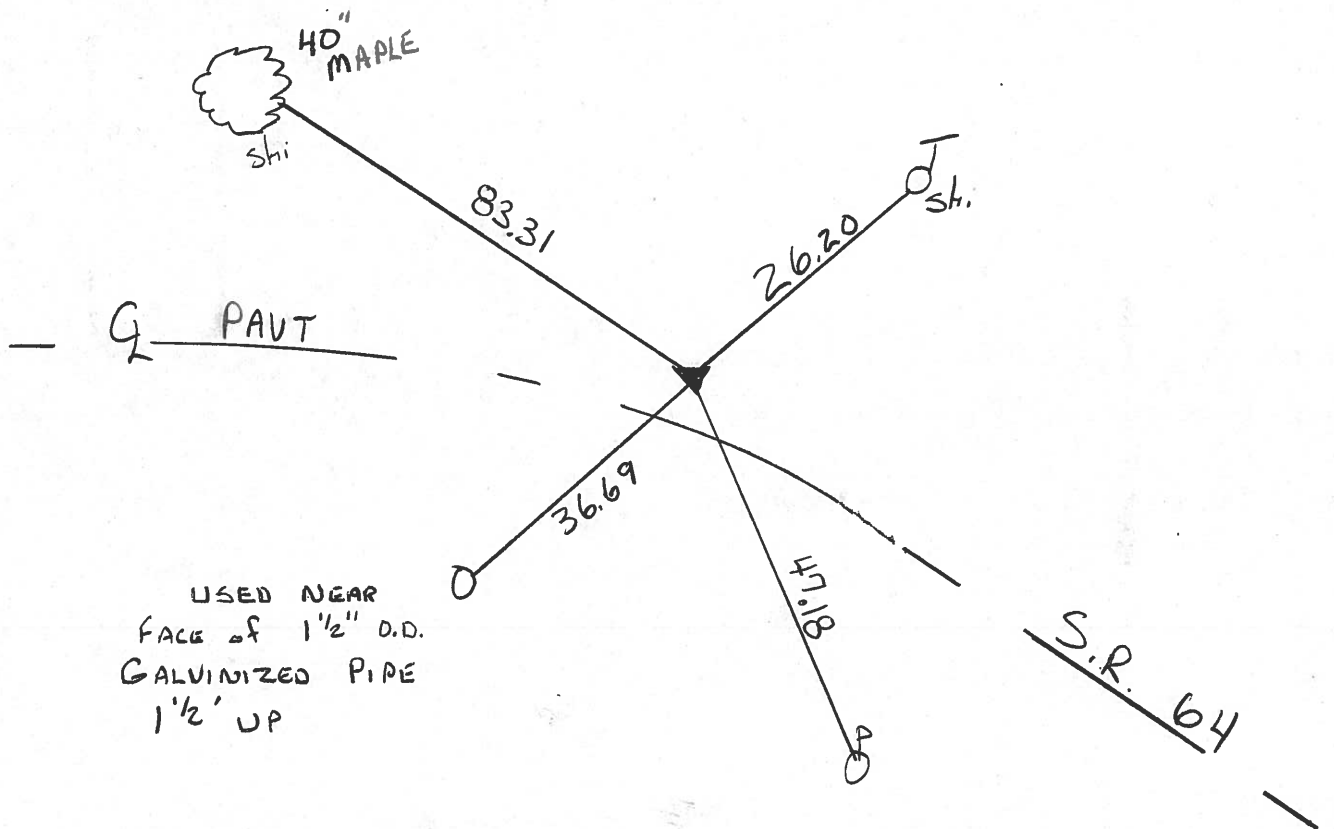
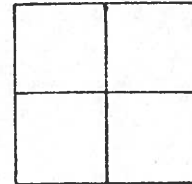
COUNTY LUCAS

TOWNSHIP WATERVILLE

SECTION _____

T. _____ R. _____

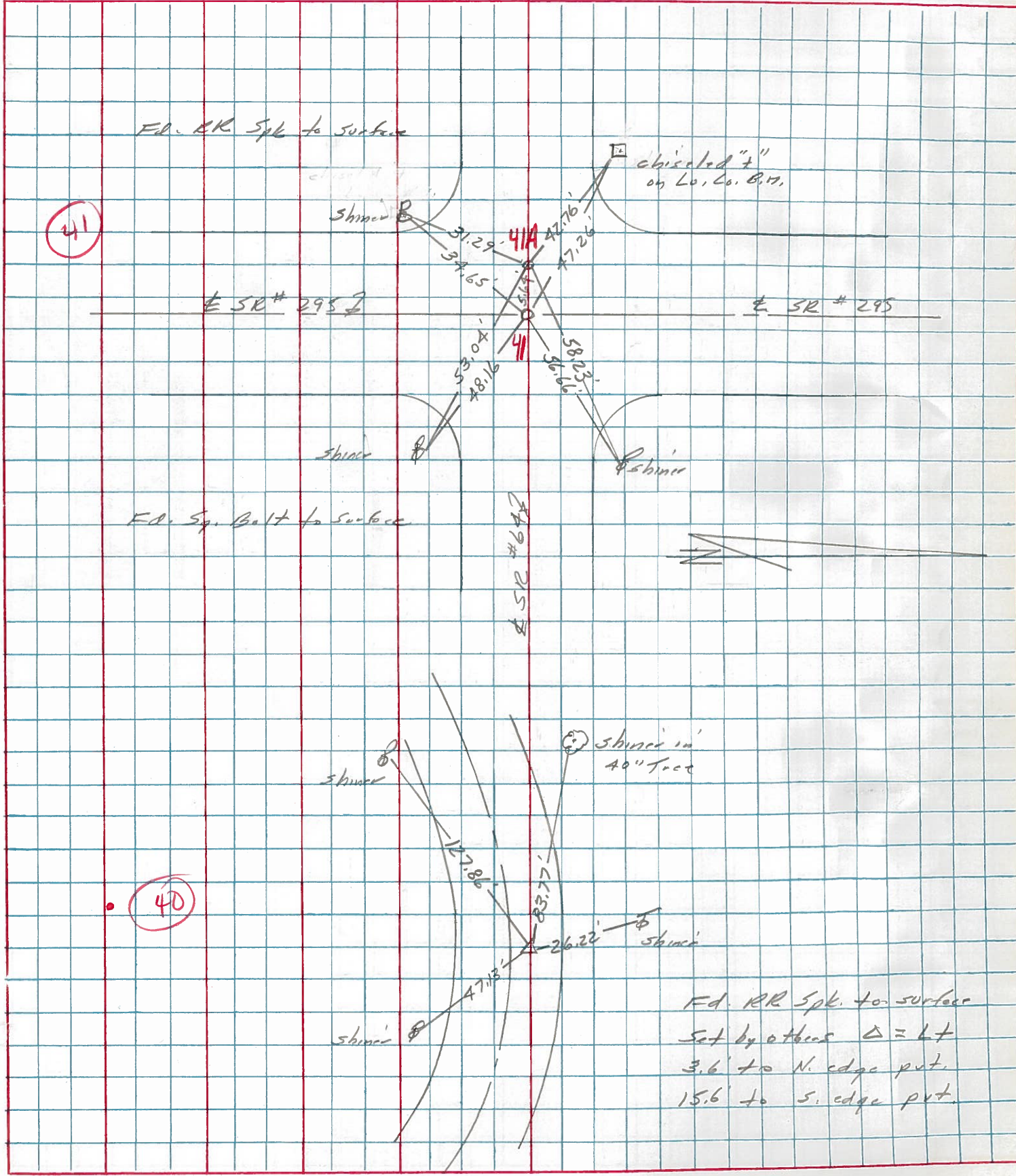
TYPE MONUMENT Lg R.R. Spike - Set by others
 ON SURFACE - BELOW Yes Set P.K.
~~LEFT~~ - PAV'T. - RIGHT S.2 3-5-92
3.9 TO Rt EDGE PAVEMENT
 S.L.M. 323 + 04



PERSONNEL	TITLE	PERSONNEL	TITLE	COUNTY	DATE	WEATHER	TEMP.
Stone				Lucas	12 April 77	Windy	82°
E				S. R. 69			
Crew				SEC. West of Whiteh			

DESCRIPTION References to Control Points JOB NO. _____

LEFT CENTER LINE RIGHT



Fd. RR Spk. to surface
 Set by others Δ = Lt
 3.6' to N. edge pt.
 15.6' to S. edge pt.

PERSONNEL TITLE PERSONNEL TITLE

COUNTY Lucas DATE Aug. 1, 1966

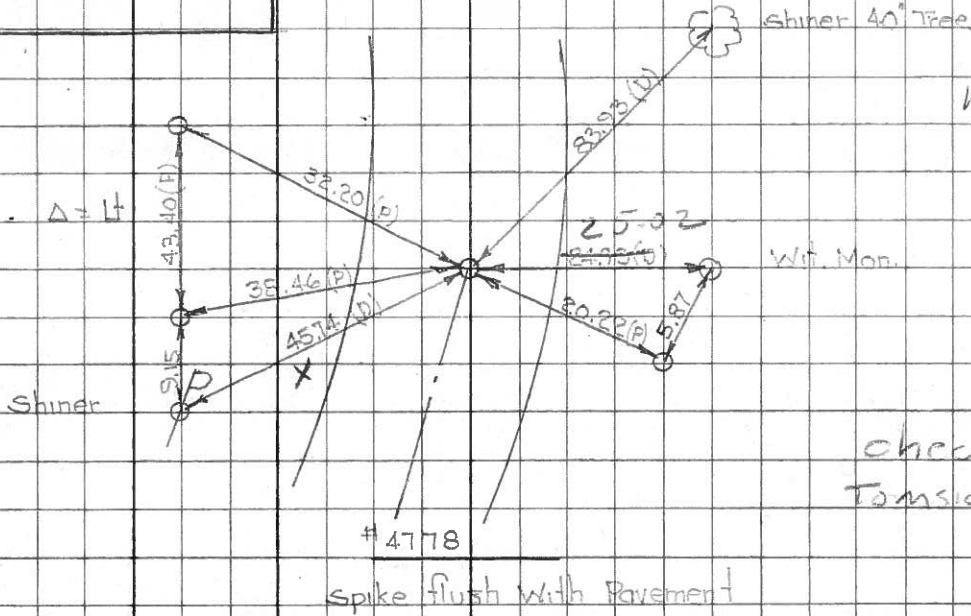
D. Curtis
 J. Teal
 J. Brindley

S. R. Co4 WEATHER mild
 SEC. TEMP. 75°±

DESCRIPTION S.R. Co4 - Ref. Mon. & Control Points JOB NO. 02994(0)

TOWN	RANGE	LEFT	CENTER LINE	RIGHT
CORNER OF SECTION				

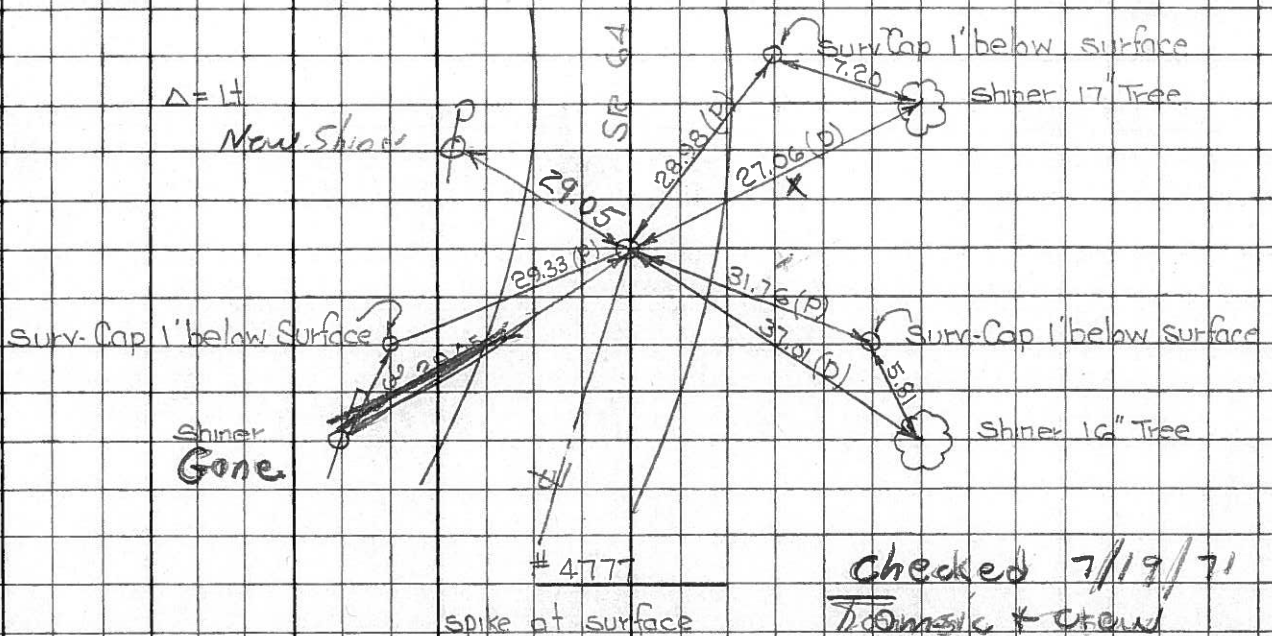
40



checked 7/19/71
 Tomasic & Crawford

TOWN	RANGE	LEFT	CENTER LINE	RIGHT
CORNER OF SECTION				

38



checked 7/19/71
 Tomasic & Crawford

1210
 (old)

1211
 (old)

PERSONNEL TITLE PERSONNEL TITLE

COUNTY Lucas DATE 3 Mar. 66

Stone

Back

Brindley

Schroder

S. R. #64

WEATHER Mild

SEC. Whitehouse - W.

TEMP. 50°

DESCRIPTION

Refs To Control Pts.

JOB NO.

LEFT

CENTER LINE

RIGHT

.38

40

41

#211 Δ = Lt. 27.06' N.W. To Skiner in 12" Tree (D)
 F. R.S. pt. Be + Over 37.01' N. To Skiner in 16" Tree (D)
 1" Blow Surface 29.05' S.W. To Skiner in P.P. (D)

#210 Δ = L, 24.95' N. To Cen. W. T. Mon. (D)
 F. Brass Plate 45.74' S.E. To Skiner in P.P. (D)
 " Blow Surface 83.93' W.N.W. To Skiner in 40' Tree (D)

#209 n + S.P. 295 8.04' N.W. To Skiner in 15" Tree (D)
 d. 3/4" Bolt 56.73' N.E. To Skiner in T.P. (D)
 2" Blow Surface 44.99' S.E. To Cen. W. T. (D)
 8.04' S.E. To Skiner in T. (D)
 4.63' S.W. To Skiner in P.P. (D)

#208 Δ = Rt. None

#207 None

#206 None

✓ out

✓ out

✓ out

/

/

/