

O.D.O.T. DISTRICT 2 SURVEY OFFICE (USE ONLY)

PERSONNEL \_\_\_\_\_ REFERENCE NO. 41 SHEET 39 OF 56  
 NOTES RHOADES DATE 6/15/17 ROUTE SR 64  
 H.C. POORE WEATHER PTLY CLOUDY COUNTY LUCAS  
 R.C. O'DONNELL TEMP. 72° TOWNSHIP WATERVILLE  
 DWG BY RHOADES PID R/W SECTION 33  
 T 7 N R 5 E

TYPE MONUMENT MAG/WASHER

ON SURFACE - ~~BELOW~~ ON \_\_\_\_\_

OFFSET  $\odot$  PAVEMENT 1.6' LT : ~~RT~~

11.6' TO RT EDGE PAVEMENT LDP:  
 N: 301700.457  
 E: 116149.082

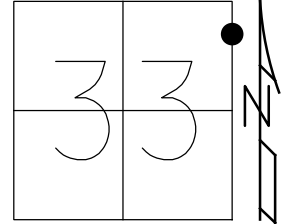
STATION: 335+91

HORZ.DATUM: NAD83 2011

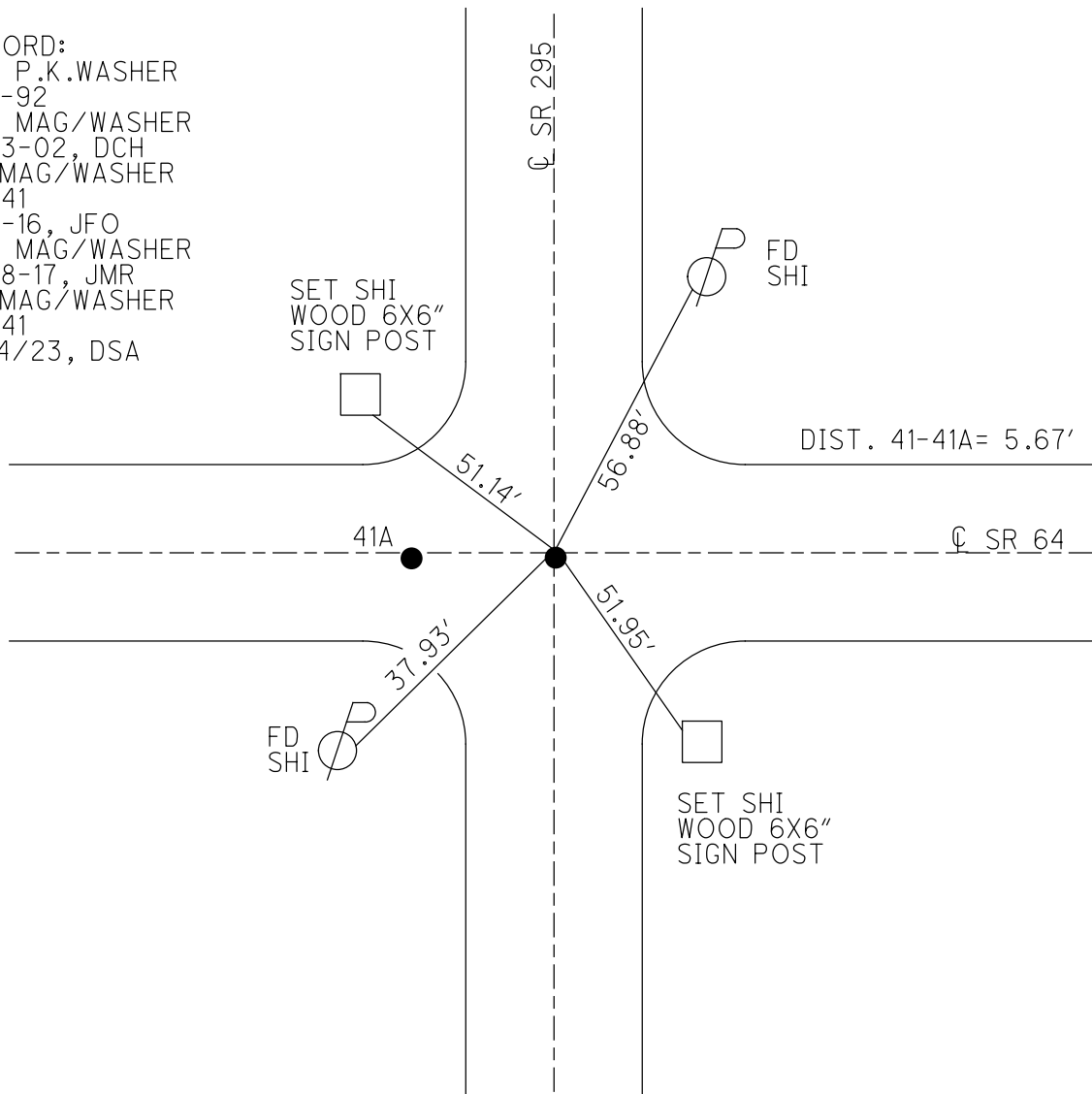
GEOID: NAVD88 2018

GRID: NORTHING: 680699.620

EASTING: 1605738.546



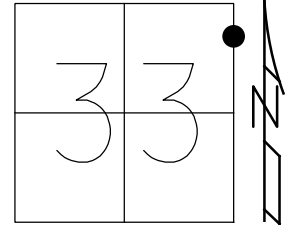
RECORD:  
 SET P.K.WASHER  
 3-5-92  
 SET MAG/WASHER  
 12-13-02, DCH  
 FD MAG/WASHER  
 REF41  
 1-14-16, JFO  
 SET MAG/WASHER  
 11-28-17, JMR  
 FD MAG/WASHER  
 REF41  
 8/14/23, DSA



O.D.O.T. DISTRICT 2 SURVEY OFFICE (USE ONLY)

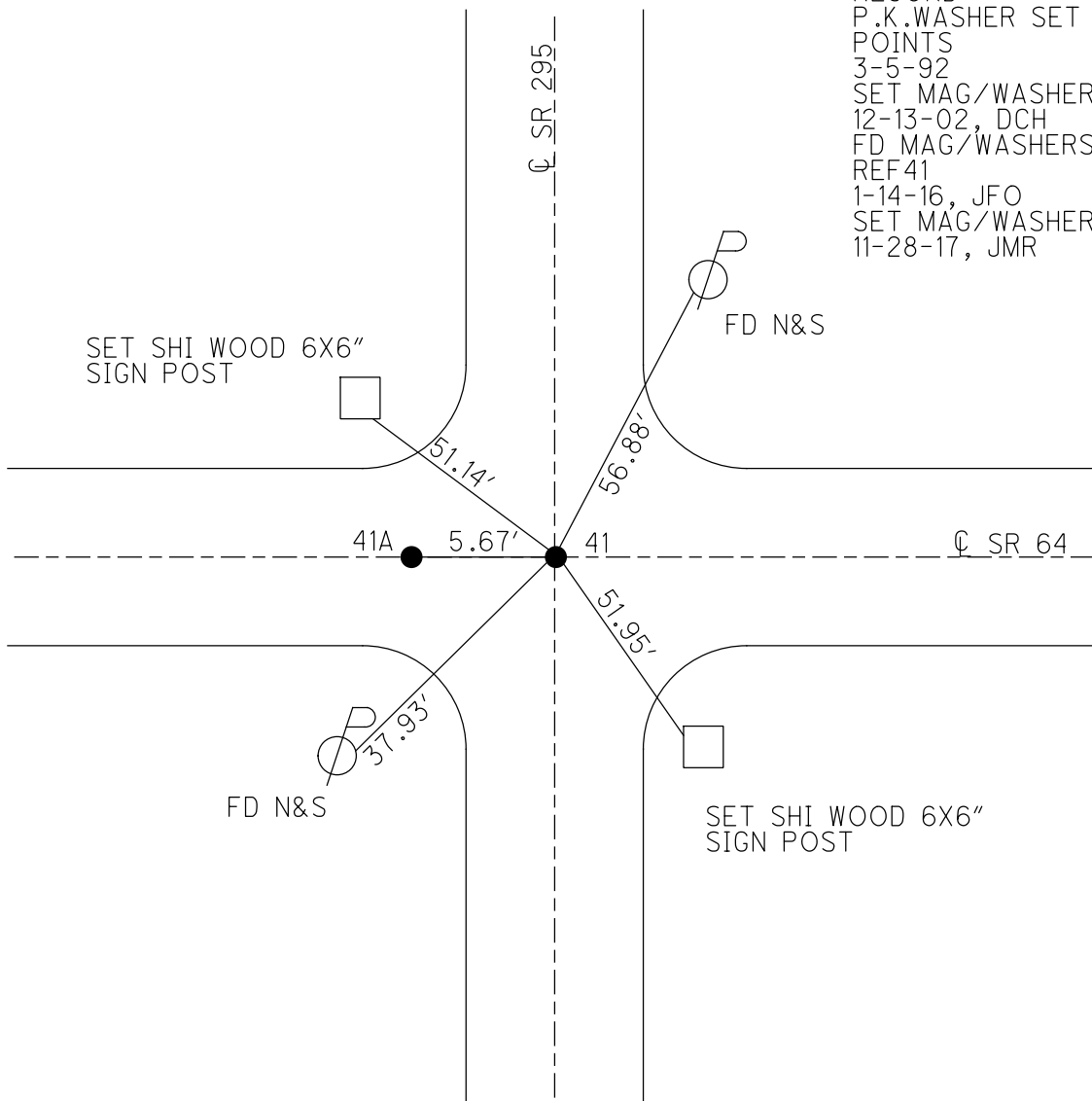
PERSONNEL \_\_\_\_\_ REFERENCE NO. 41 SHEET 39 OF 50  
 NOTES RHOADES DATE 6-15-17 ROUTE SR 64  
 H.C. POORE WEATHER CLOUDY COUNTY LUCAS  
 R.C. O'DONNELL TEMP. 72° TOWNSHIP WATERVILLE  
 \_\_\_\_\_ SECTION 33  
 \_\_\_\_\_ T 7 N R 5 E

TYPE MONUMENT MAG/WASHER  
 ON SURFACE - ~~BELOW~~ ON  
~~LEFT~~ - Q PAV'T - ~~RIGHT~~ ON  
11.6' TO RT EDGE PAVEMENT  
 S.L.M. 335+91



Grid: Northing: 680699.6199 Easting: 1605738.5459

RECORD:  
 P.K. WASHER SET OVER  
 POINTS  
 3-5-92  
 SET MAG/WASHER  
 12-13-02, DCH  
 FD MAG/WASHERS  
 REF41  
 1-14-16, JFO  
 SET MAG/WASHER  
 11-28-17, JMR



O.D.O.T. DISTRICT 2 SURVEY OFFICE

18 ON SR 295

PERSONNEL

REFERENCE NO. 41

SHEET 47 OF 47

NOTES ROUSOS

DATE 5-22-02

ROUTE S.R. 64

H.C. HOMAN

WEATHER SUNNY

COUNTY LUCAS

R.C. MICHALAK

TEMP. 52

TOWNSHIP SWANTON

SECTION 33

T 7 N R 5 E

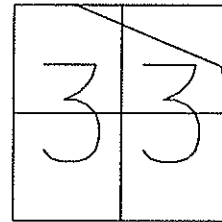
TYPE MONUMENT A=SQ BOLT B=RR SPIKE

ON SURFACE - ~~BELOW~~ YES

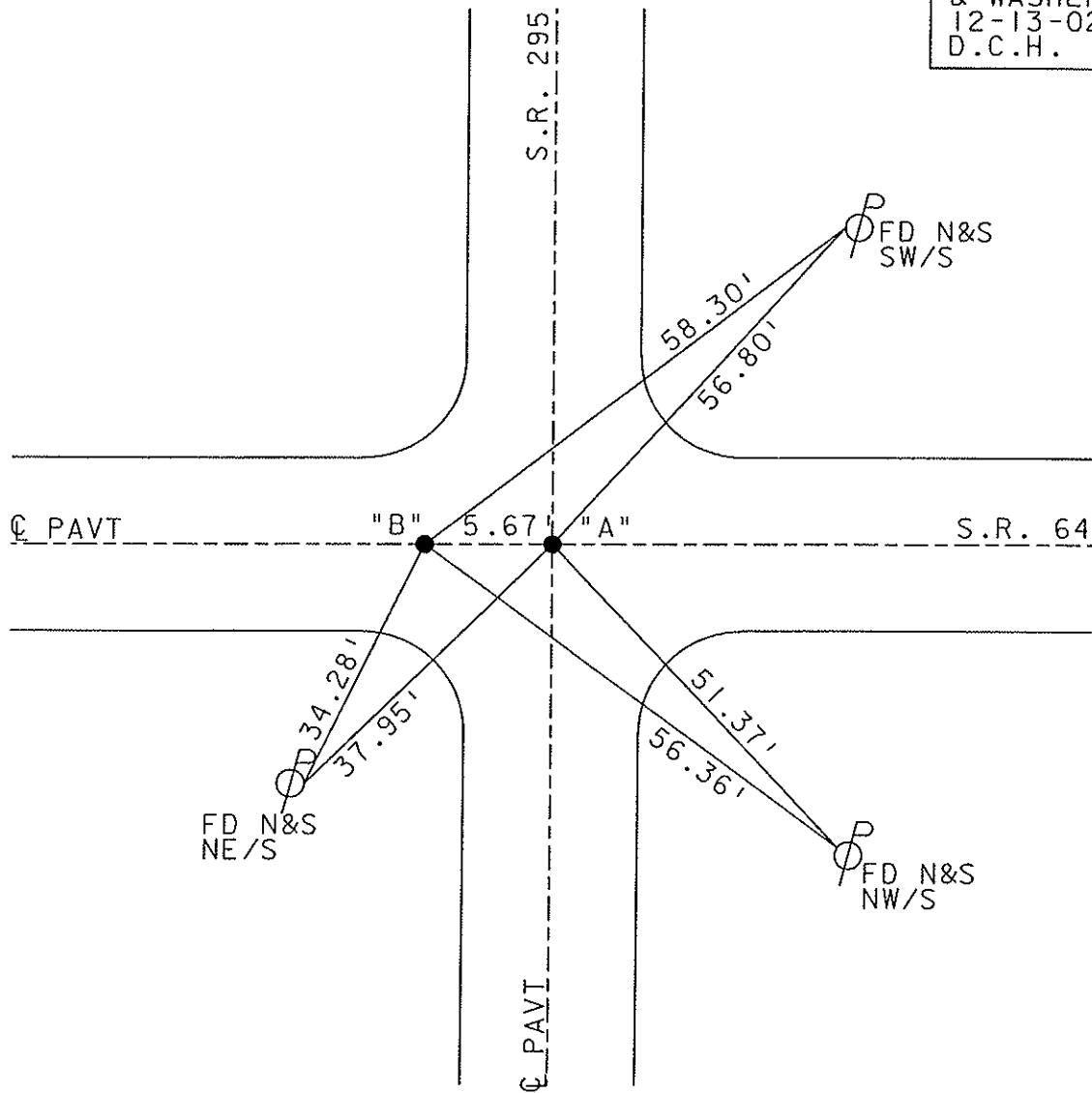
~~LEFT - Q PAVT - RIGHT~~ YES

11.6' TO RT. EDGE PAVEMENT

S.L.M. A=336+84 B=336+90



SET MAG NAILS  
& WASHERS  
12-13-02  
D.C.H.



# O.D.O.T. DISTRICT 2 SURVEY OFFICE

PERSONNEL \_\_\_\_\_

REFERENCE NO. 41

SHEET 1 OF 7

NOTES Huss

H.C. Van Dusen

R.C. Moser

DATE 10-31-96

WEATHER Cold-Mild

TEMP. +34 °F

ROUTE SR-64

COUNTY Lucas

TOWNSHIP Swanton

SECTION 33

T 7 N R 5 E

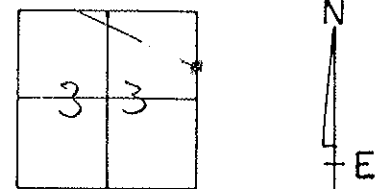
TYPE MONUMENT (A) Sq. Bolt (B) Sm. RR spk.

~~ON SURFACE~~ - (BELOW) Yes

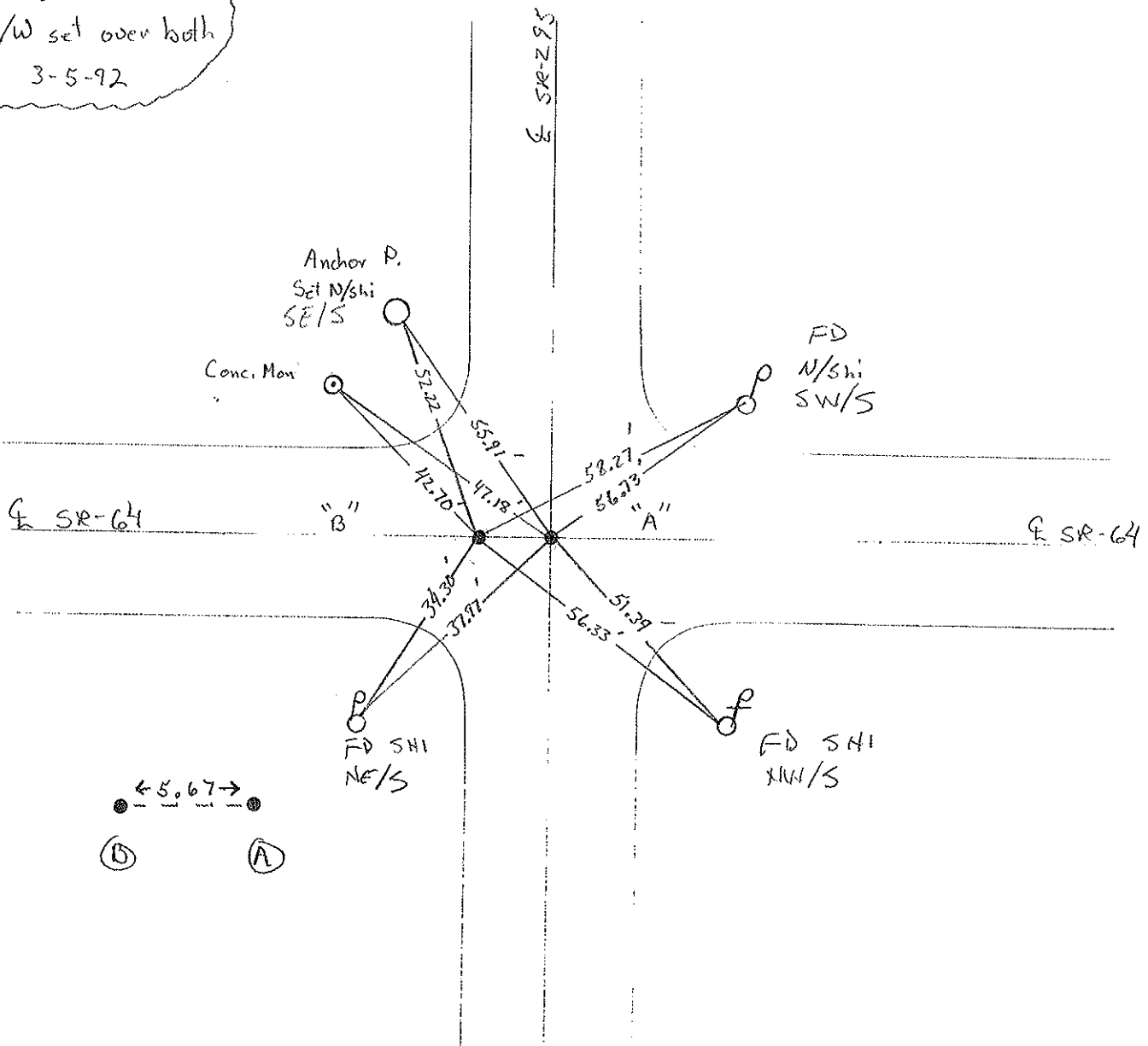
~~LEFT~~ - (L. PAW'T) - ~~RIGHT~~ on E

11.6 TO Rt EDGE PAVEMENT

S.L.M. A-336+84 / B-336+90



Record  
PK/W set over both  
Pts. 3-5-92



Resurfaced 1999

O.D.O.T. DISTRICT 2 SURVEY OFFICE

PERSONNEL

REFERENCE NO. 41

SHEET 43 OF 49

NOTES LOEHRKE

H.C. CURTIS

R.C. RIPPLE

DATE 7-26-91

WEATHER Cloudy

TEMP. +78

ROUTE SR 64

COUNTY LUCAS

TOWNSHIP SWANTON

SECTION 33

"A" "B" SET P.K. / WASH RT 1 N R S E

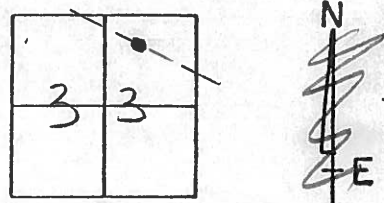
TYPE MONUMENT So. Bolt So. RR Spk 3-5-92

ON SURFACE - BELOW YES

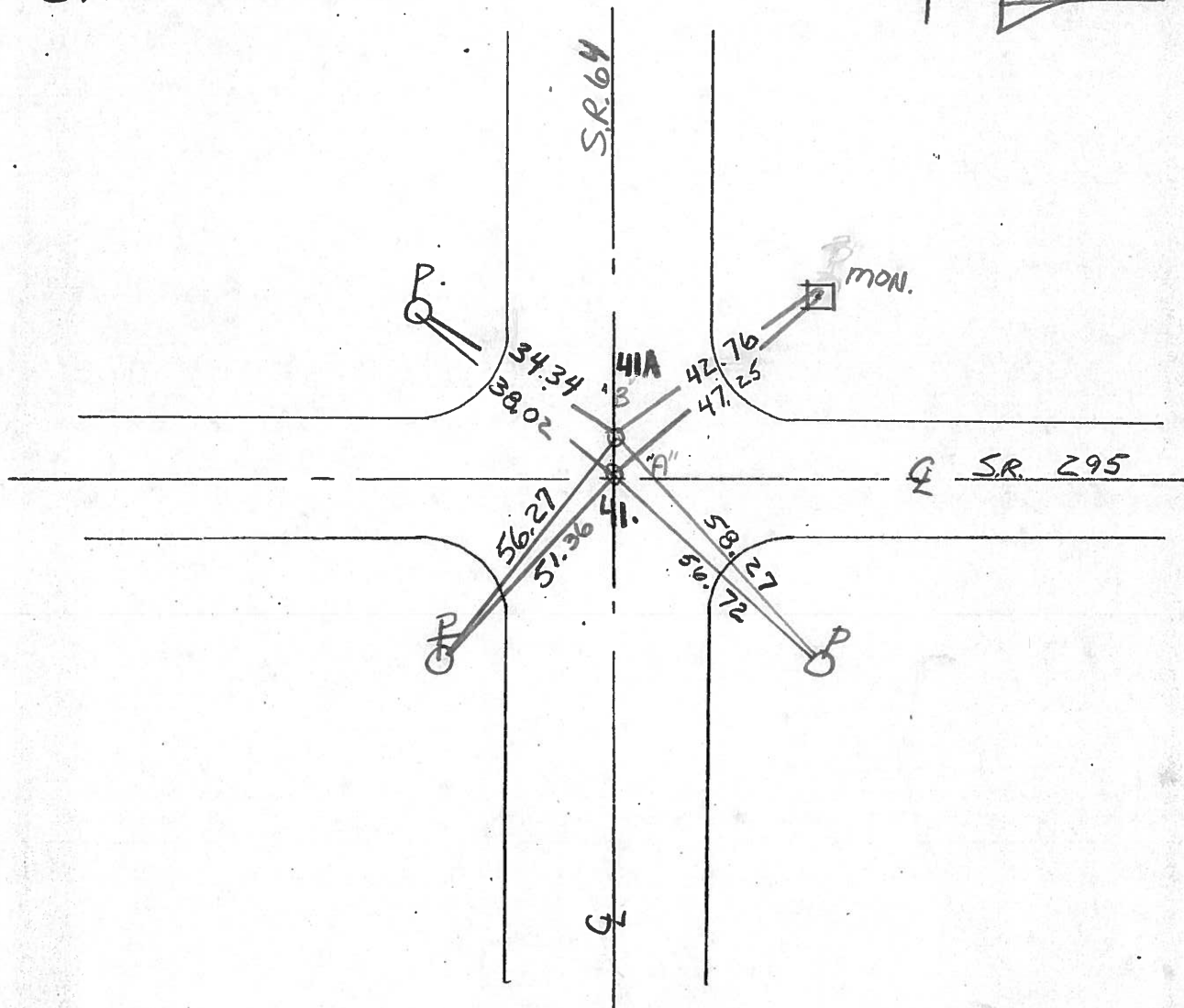
LEFT - & PAV'T. - RIGHT YES

TO EDGE PAVEMENT

S.L.M. 336 + 79



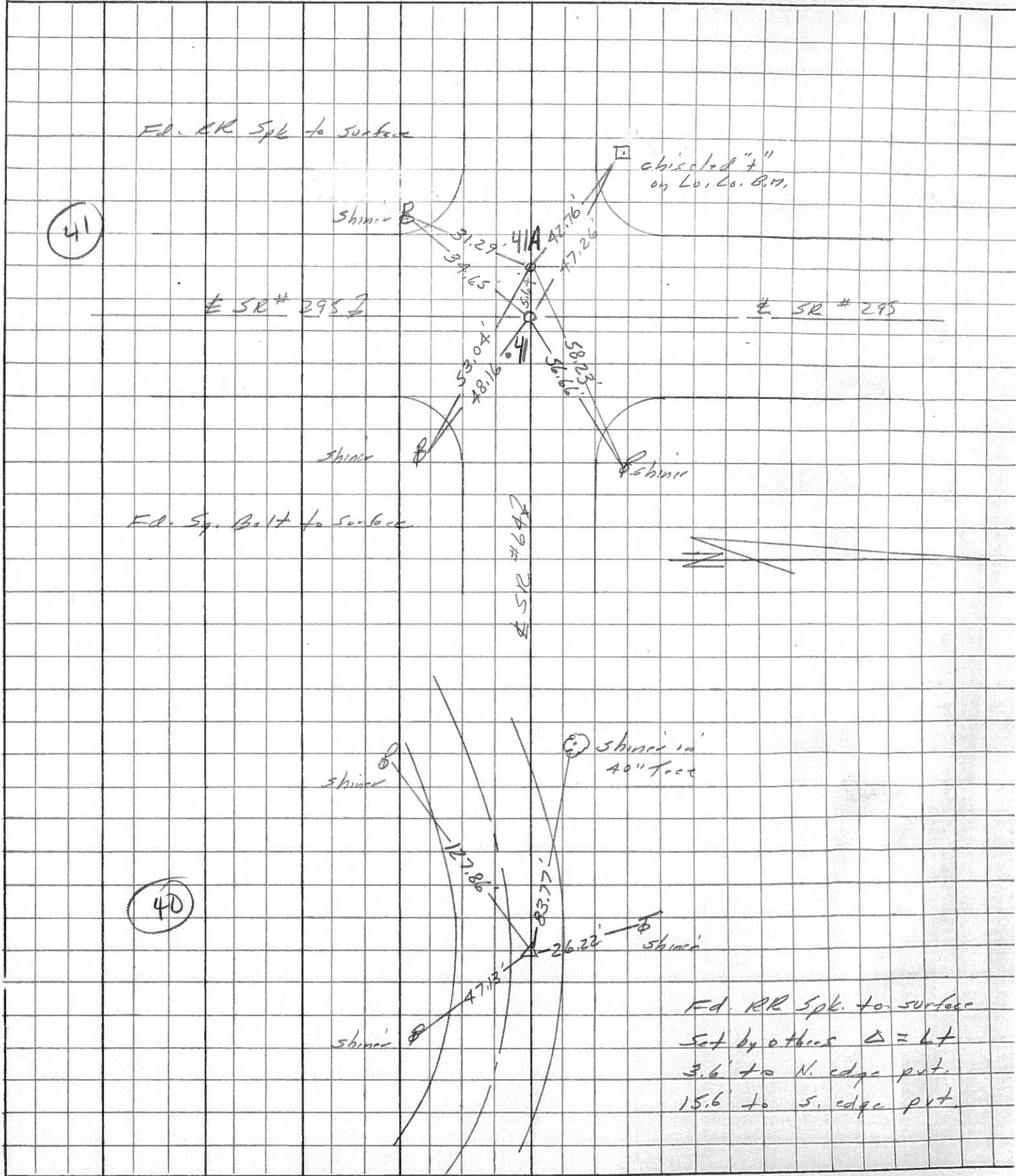
5.66' Between Pts



PERSONNEL	TITLE	PERSONNEL	TITLE	COUNTY	DATE	WEATHER	TEMP.
Stone				Lucas	12 April 77	W/MS	82°
E				S. R. 69			
Lucas				SEC. West of Whitehurst			

DESCRIPTION References to Control Points JOB NO. \_\_\_\_\_

LEFT CENTER LINE RIGHT



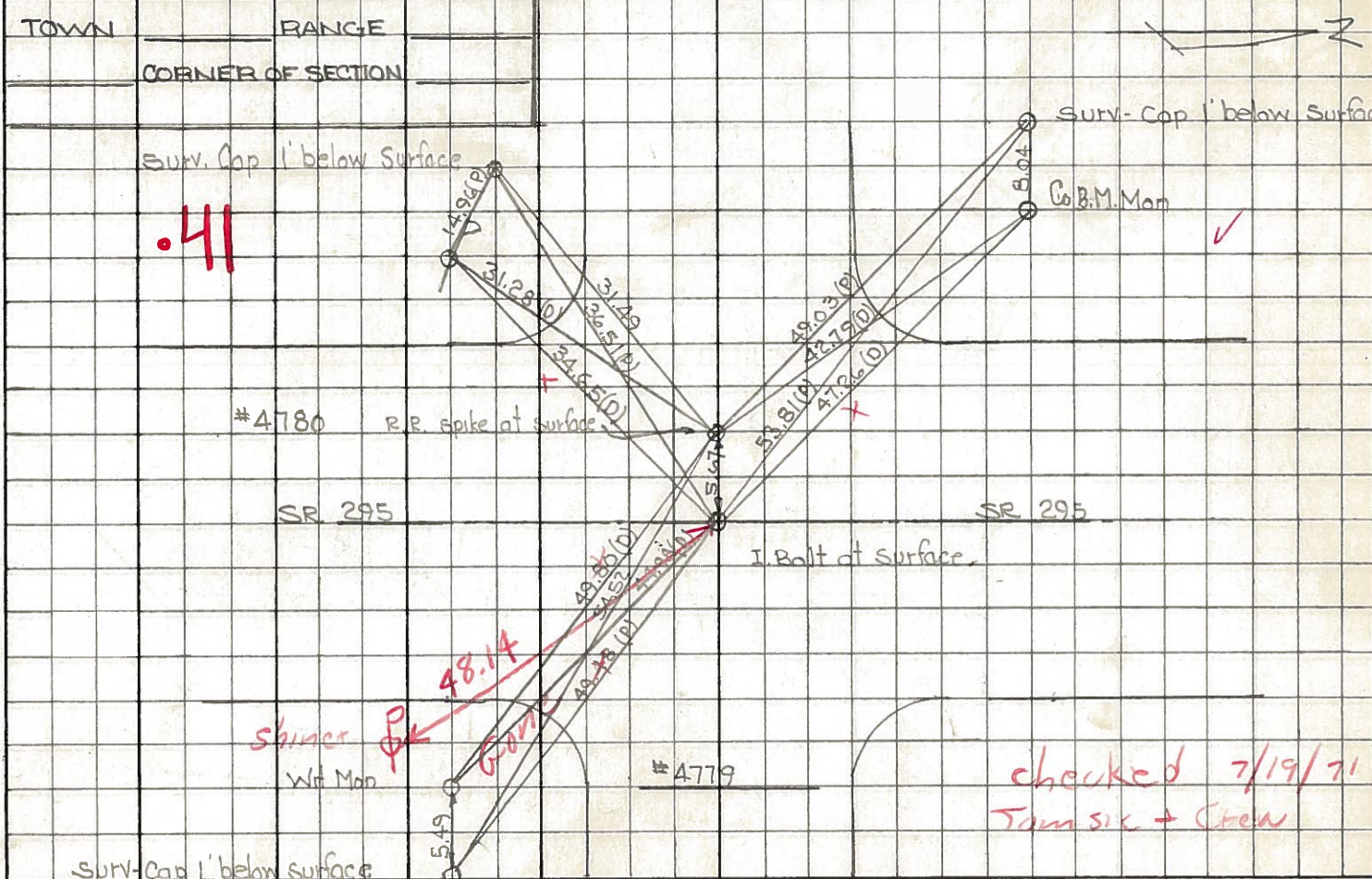
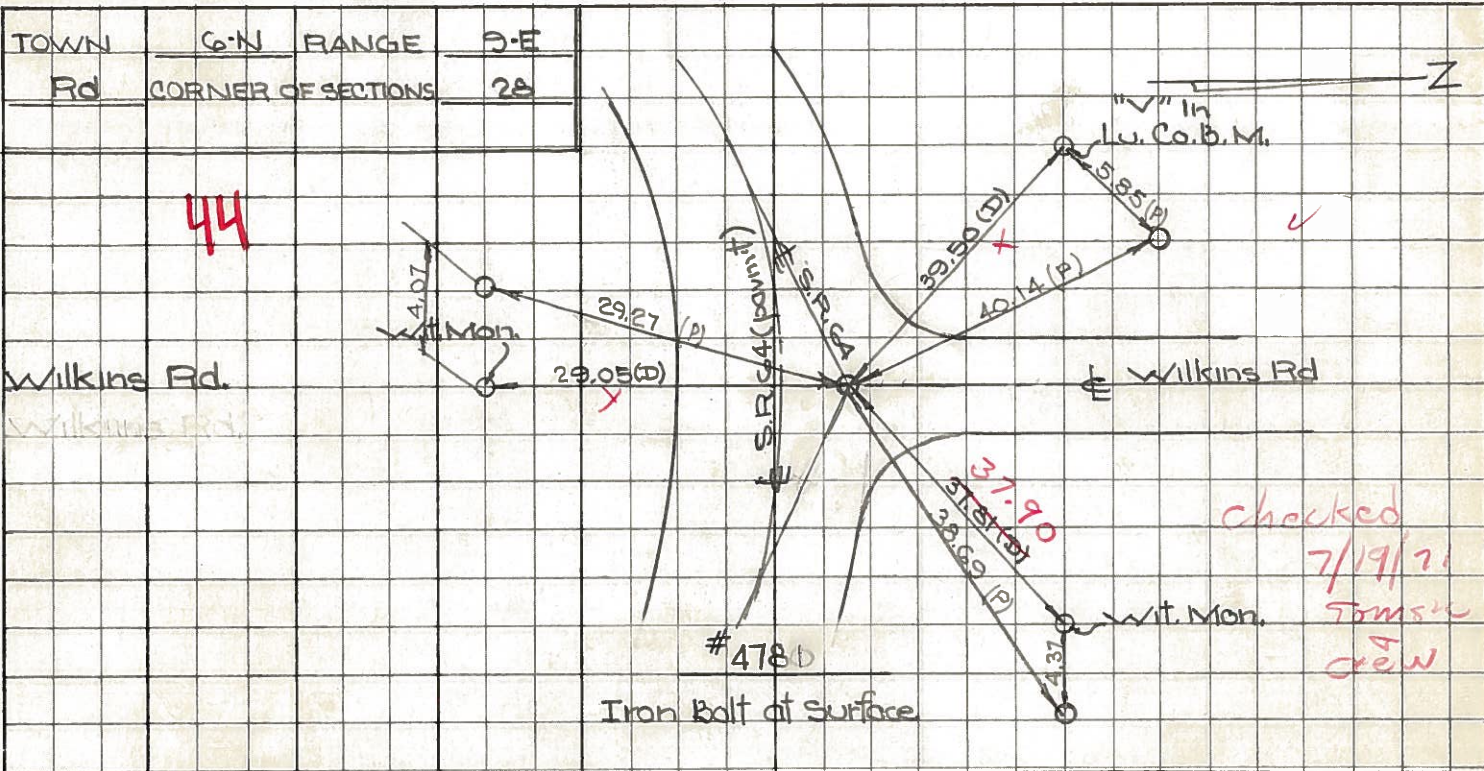
PERSONNEL TITLE PERSONNEL TITLE

COUNTY Lucas DATE Aug. 1, 1968

D. Curtis  
J. Teal  
J. Brindley

S. R. Co4 WEATHER mild  
SEC. TEMP. 75° ±

DESCRIPTION S.P. Co4 - Ref. Mon. & Control Points JOB NO. 02994(0)



209 (old)

PERSONNEL	TITLE	PERSONNEL	TITLE	COUNTY	DATE
Stone				Lucas	3 Mar. 66
Back				S. R. #64	WEATHER Mild
Brindley				SEC. Whitehouse - W.	TEMP. 50°
Schroder					

DESCRIPTION Refs To Control Pts. JOB NO. \_\_\_\_\_

✓ out

✓ out

✓ out

/

/

/

	LEFT	CENTER LINE	RIGHT
	<b>.38</b>		
#211	Δ = Lt F. R.Spt. Be + Over 1" Blow Surface	27.06' 37.01' 29.05'	N.W. To Skiner in 17" Tree (D) N. To Skiner in 16" Tree (D) S.W. To Skiner in P.P. (D)
	<b>40</b>		
#210	Δ = L F. Brass Plate " Blow Surface	24.95' 45.74' 83.93'	N. To Cen. W. T. Mon. (D) S.E. To Skiner in P.P. (D) W.N.W. To Skiner in 40' Tree (D)
	<b>41</b>		
#209	n + S.P. 295 d. 3/4" Bolt 2" Blow Surface	8.04' 56.73' 44.99' 8.04' 4.63'	N.W. To Skiner in 15" Tree (D) N.E. To Skiner in T.P. (D) S.E. To Cen. W. T. (D) S.E. To Skiner in T. (D) S.W. To Skiner in P.P. (D)
#208	Δ = Rt		None
#207			None
#206			None