

O.D.O.T. DISTRICT 2 SURVEY OFFICE (USE ONLY)

PERSONNEL

REFERENCE NO. 41 A

SHEET 40 OF 56

NOTES RHOADES

DATE 6/15/17

ROUTE SR 64

H.C. POORE

WEATHER PTLY CLOUDY

COUNTY LUCAS

R.C. O'DONNELL

TEMP. 72°

TOWNSHIP WATERVILLE

SECTION 33

DWG BY RHOADES PID R/W

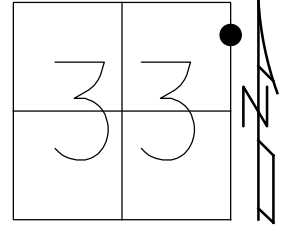
T 7 N R 5 E

TYPE MONUMENT MAG/WASHER

ON SURFACE - ~~BELOW~~ ON

OFFSET 1.6' LT : ~~RT~~

11.6' TO RT EDGE PAVEMENT
 STATION: 335+97
 LDP:
 N: 301702.049
 E: 116143.653



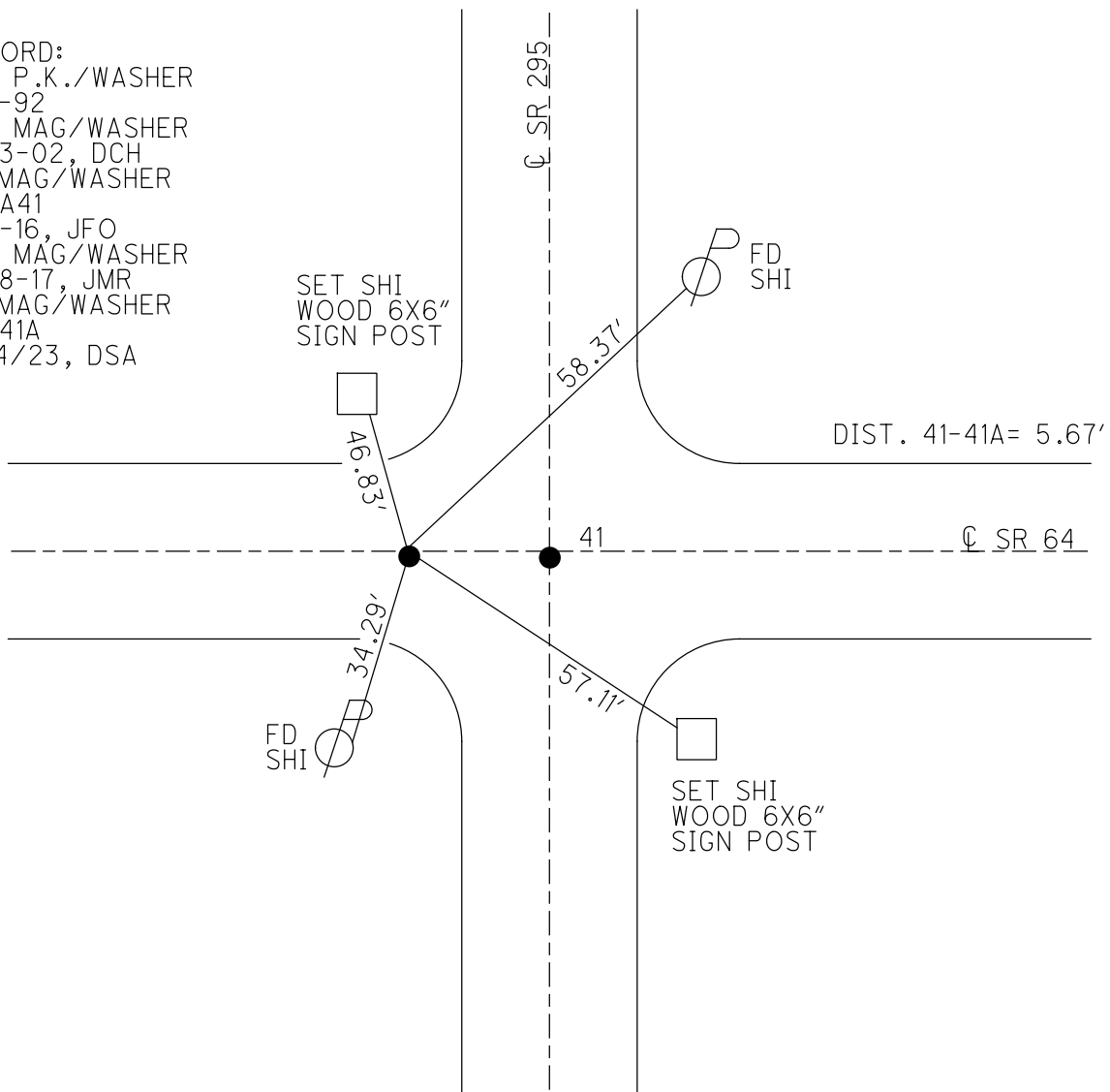
HORZ. DATUM: NAD83 2011

GEOID: NAVD88 2018

GRID: NORTHING: 680701.232

EASTING: 1605733.116

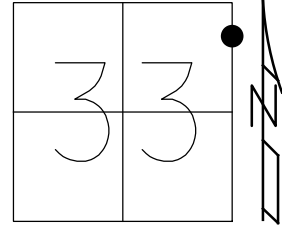
RECORD:
 SET P.K./WASHER
 3-5-92
 SET MAG/WASHER
 12-13-02, DCH
 FD MAG/WASHER
 REFA41
 1-14-16, JFO
 SET MAG/WASHER
 11-28-17, JMR
 FD MAG/WASHER
 REF41A
 8/14/23, DSA



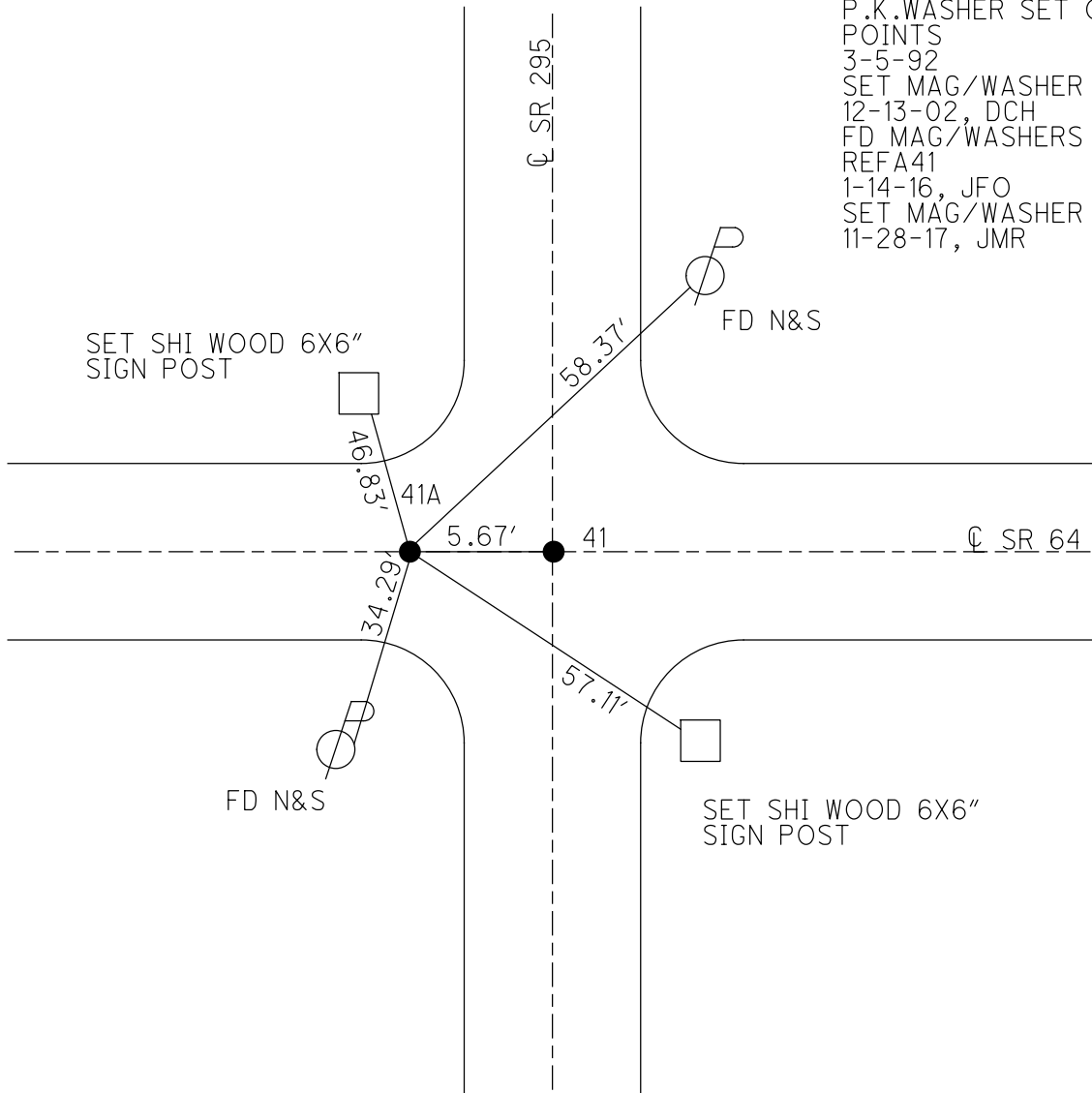
O.D.O.T. DISTRICT 2 SURVEY OFFICE (USE ONLY)

PERSONNEL _____ REFERENCE NO. 41 A SHEET 40 OF 50
 NOTES RHOADES DATE 6-15-17 ROUTE SR 64
 H.C. POORE WEATHER CLOUDY COUNTY LUCAS
 R.C. O'DONNELL TEMP. 72° TOWNSHIP WATERVILLE
 _____ SECTION 33
 _____ T 7 N R 5 E

TYPE MONUMENT MAG/WASHER
 ON SURFACE - ~~BELOW~~ ON
~~LEFT - C~~ PAV'T - ~~RIGHT~~ ON
11.6' TO RT EDGE PAVEMENT
 S.L.M. 335+97
 Grid: Northing: 680701.2315 Easting: 1605733.1157



RECORD:
 P.K. WASHER SET OVER
 POINTS
 3-5-92
 SET MAG/WASHER
 12-13-02, DCH
 FD MAG/WASHERS
 REFA41
 1-14-16, JFO
 SET MAG/WASHER
 11-28-17, JMR



O.D.O.T. DISTRICT 2 SURVEY OFFICE

18 ON SR 295

PERSONNEL

REFERENCE NO. 41

SHEET 47 OF 47

NOTES ROUSOS

DATE 5-22-02

ROUTE S.R. 64

H.C. HOMAN

WEATHER SUNNY

COUNTY LUCAS

R.C. MICHALAK

TEMP. 52

TOWNSHIP SWANTON

SECTION 33

T 7 N R 5 E

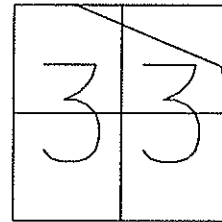
TYPE MONUMENT A=SQ BOLT B=RR SPIKE

ON SURFACE - ~~BELOW~~ YES

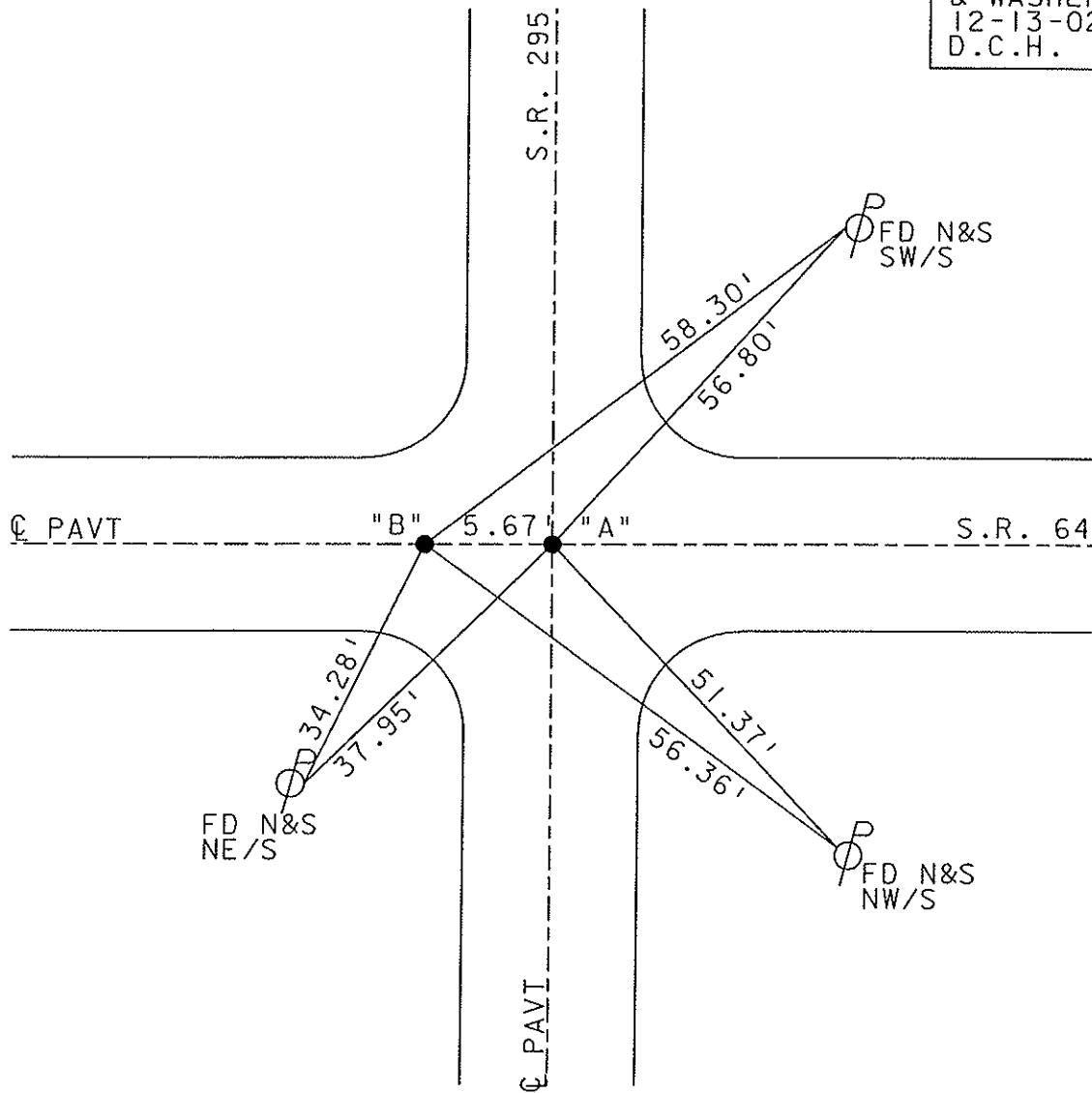
~~LEFT - Q PAVT - RIGHT~~ YES

11.6' TO RT. EDGE PAVEMENT

S.L.M. A=336+84 B=336+90



SET MAG NAILS
& WASHERS
12-13-02
D.C.H.



O.D.O.T. DISTRICT 2 SURVEY OFFICE

PERSONNEL _____

REFERENCE NO. 41

SHEET 1 OF 7

NOTES Huss

H.C. Van Dusen

R.C. Moser

DATE 10-31-96

WEATHER Cold-Mild

TEMP. +34 °F

ROUTE SR-64

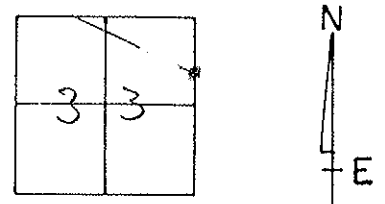
COUNTY Lucas

TOWNSHIP Swanton

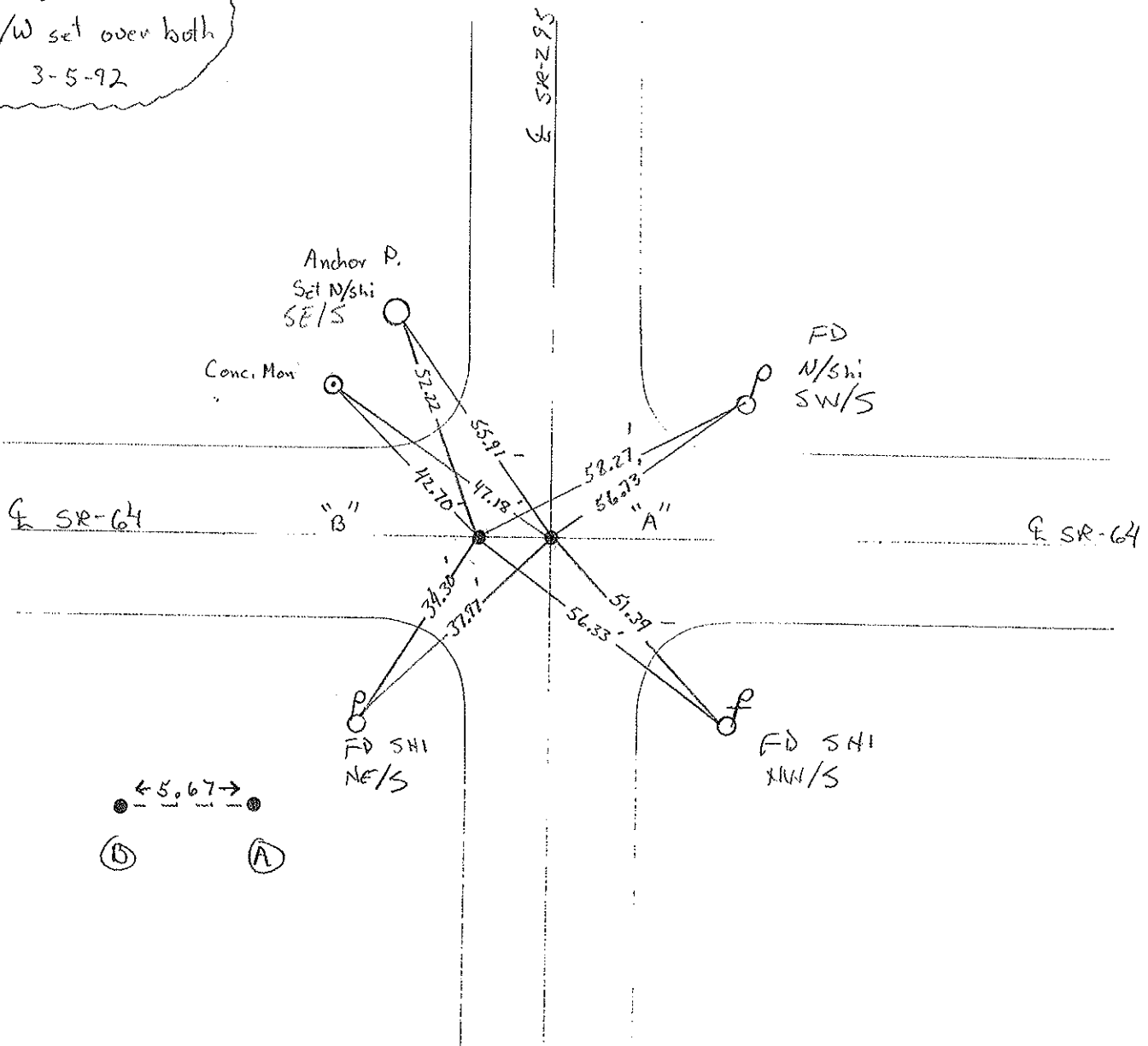
SECTION 33

T 7 N R 5 E

TYPE MONUMENT (A) Sq. Bolt (B) Sm. RR spk.
 ON SURFACE - (BELOW) Yes
~~LEFT~~ - (L) PAW'T - ~~RIGHT~~ on E
11.6 TO RT EDGE PAVEMENT
 S.L.M. A- 336+84 / B- 336+90



Record
 PK/W set over both
 Pts. 3-5-92



Resurfaced 1999

O.D.O.T. DISTRICT 2 SURVEY OFFICE

PERSONNEL

REFERENCE NO. 41

SHEET 43 OF 49

NOTES LOEHRKE

H.C. CURTIS

DATE 7-26-91

ROUTE SR. 64

R.C. RIPPLE

WEATHER CLOUDY

COUNTY LUCAS

TEMP. +78

TOWNSHIP SWANTON

SECTION 33

"A"

"B"

SET P.K./WASHER T 1 N R S E

TYPE MONUMENT Sm. Bolt

Sm. RR Spk

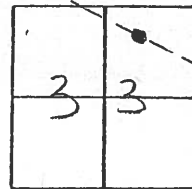
3-5-92

ON SURFACE - BELOW YES

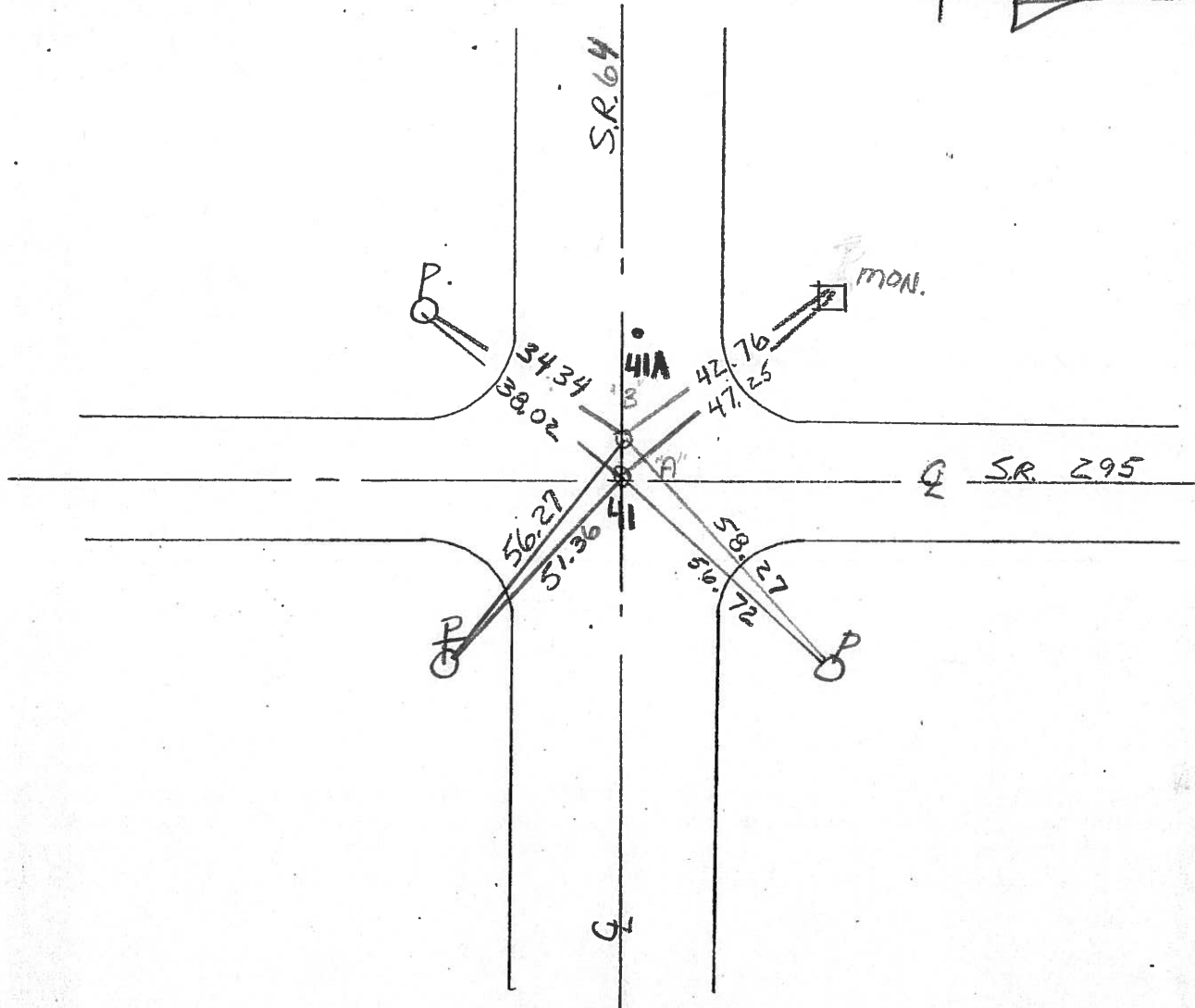
LEFT - & PAV'T. - RIGHT YES

TO EDGE PAVEMENT

S.L.M. 336 + 7.9



5.66' Between Pts



PERSONNEL	TITLE	PERSONNEL	TITLE	COUNTY	DATE	WEATHER	TEMP.
Stone				Lucas	12 April 77	Warm	82°
E				S. R. 69			
Crew				West of Whitehse			

DESCRIPTION References to Central Points JOB NO. _____

LEFT CENTER LINE RIGHT

