

O.D.O.T. DISTRICT 2 SURVEY OFFICE (USE ONLY)

PERSONNEL

REFERENCE NO. 42

SHEET 41 OF 56

NOTES RHOADES

DATE 6/15/17

ROUTE SR 64

H.C. POORE

WEATHER PTLY CLOUDY

COUNTY LUCAS

R.C. O'DONNELL

TEMP. 72°

TOWNSHIP WATERVILLE

SECTION 33

DWG BY RHOADES PID R/W

T 7 N R 5 E

TYPE MONUMENT MAG/WASHER

ON SURFACE - ~~BELOW~~ ON

OFFSET CL PAVEMENT 1.0' LT : ~~RT~~

8.8' TO LT EDGE PAVEMENT

LDP:  
N: 301921.238  
E: 115325.142

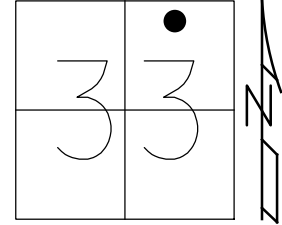
STATION: 344+44.34

HORZ.DATUM: NAD83 2011

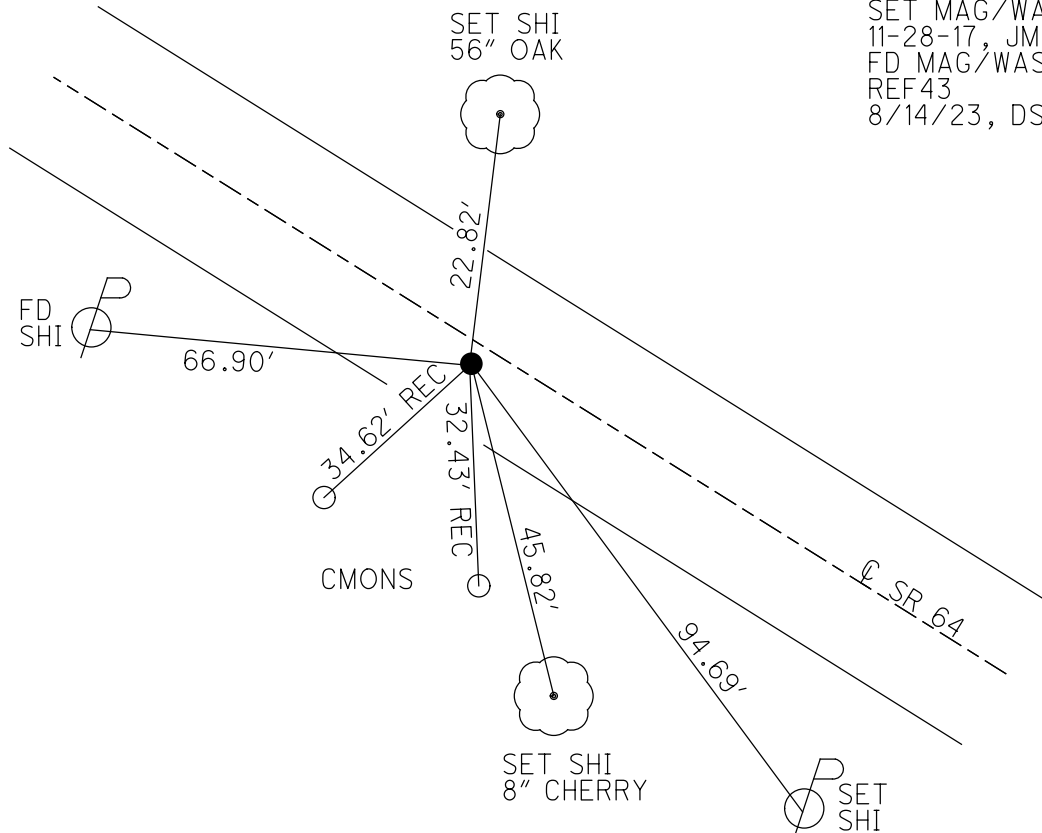
GEOID: NAVD88 2018

GRID: NORTHING: 680931.272

EASTING: 160417.631



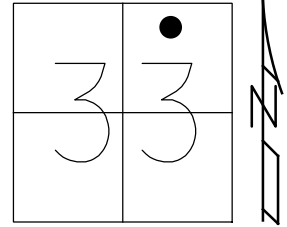
RECORD:  
SET P.K./WASHER  
3-5-92  
SET P.K./WASHER  
6-16-97, SAH  
SET P.K./WASHER  
6-14-99, BWC  
FD P.K./WASHER  
REF42  
1-15-16, JFO  
SET MAG/WASHER  
11-28-17, JMR  
FD MAG/WASHER  
REF43  
8/14/23, DSA



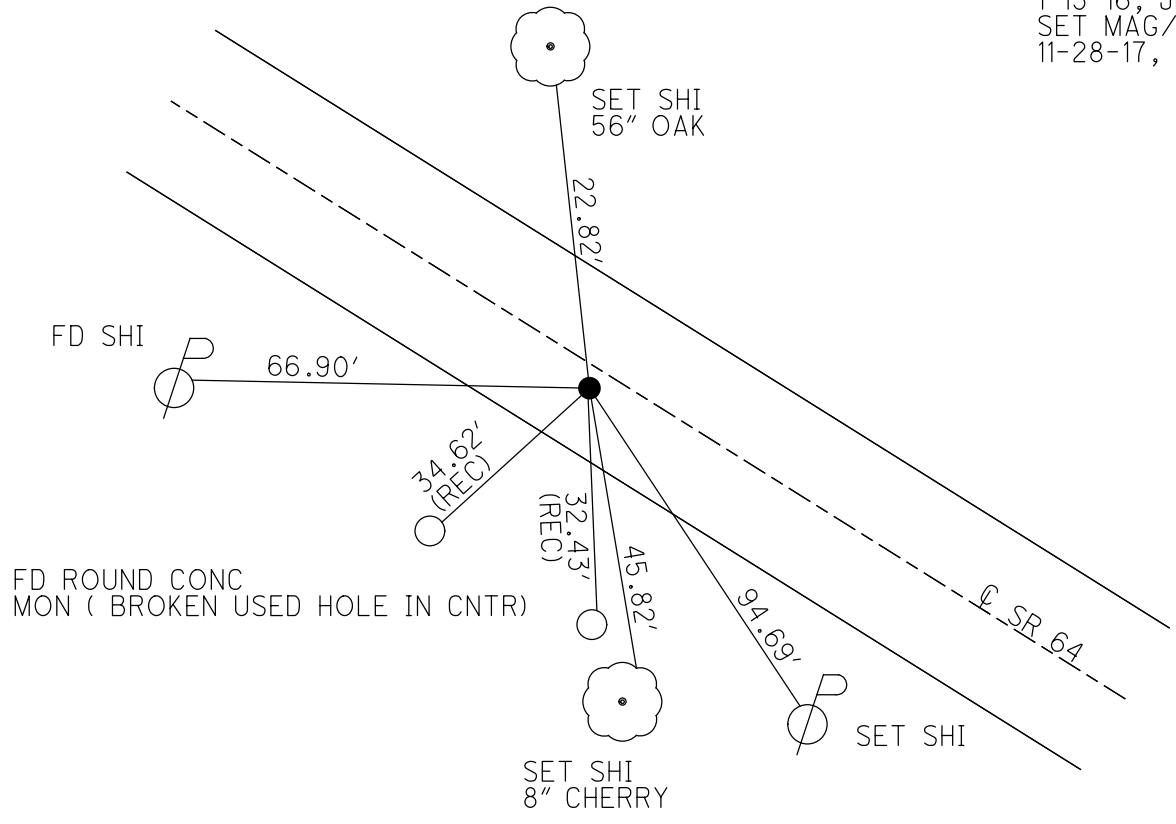
O.D.O.T. DISTRICT 2 SURVEY OFFICE (USE ONLY)

PERSONNEL \_\_\_\_\_ REFERENCE NO. 42 SHEET 41 OF 50  
 NOTES RHOADES DATE 6-15-17 ROUTE SR 64  
 H.C. POORE WEATHER PT CLOUDY COUNTY LUCAS  
 R.C. O'DONNELL TEMP. 72° TOWNSHIP WATERVILLE  
 \_\_\_\_\_ SECTION 33  
 \_\_\_\_\_ T 7 N R 5 E

TYPE MONUMENT P.K.WASHER  
 ON SURFACE - ~~BELOW~~ ON \_\_\_\_\_  
 LEFT - ☉ PAV'T - ~~RIGHT~~ 1.0'  
8.8 TO LT EDGE PAVEMENT  
 S.L.M. 344+44.34  
 Grid: Northing: 680931.2719 Easting: 160417.6310



RECORD:  
 P.K.WASHER SET  
 3-5-92  
 P.K.WASHER SET  
 6-16-97, SAH  
 SET P.K.WASHER  
 6-14-99, BWC  
 FD P.K.WASHER  
 REF 42  
 1-15-16, JFO  
 SET MAG/WASHER  
 11-28-17, JMR



# O.D.O.T. DISTRICT 2 SURVEY OFFICE

PERSONNEL \_\_\_\_\_

REFERENCE NO. 42

SHEET 2 OF 7

NOTES Huss

H.C. Dan Dusen

R.C. Moser

DATE 10-31-96

WEATHER Pt - Cldy

TEMP. +34°F

ROUTE SR-64

COUNTY Lucas

TOWNSHIP Swanton

SECTION 33

T 7 N R 5 E

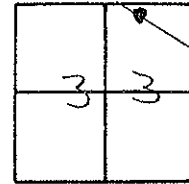
TYPE MONUMENT h.g. RR. Spk

ON SURFACE - BELOW Yes

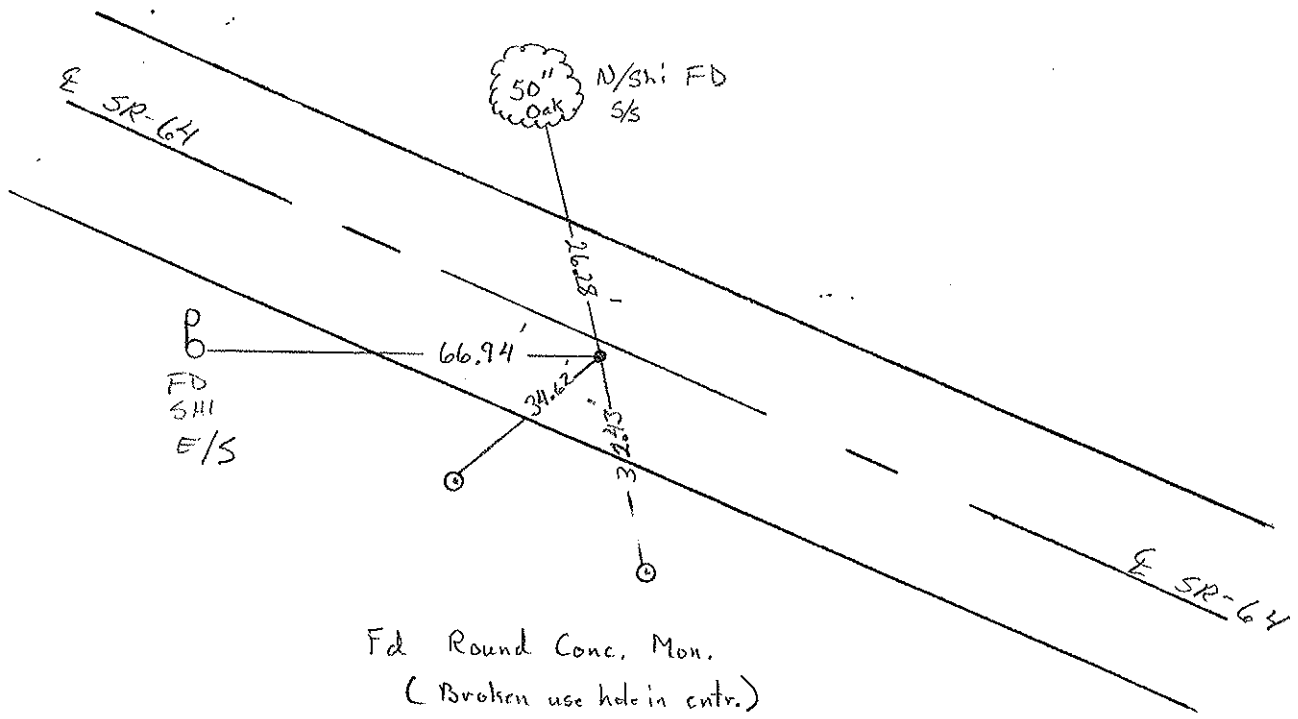
LEFT - ~~ON PAV'T~~ RIGHT 1.0' ht

8.8' TO ht EDGE PAVEMENT

S.L.M. 345 +35



PKW set 3-5-92    PKW set 6-16-97 S.H.I.    SET PK + WASHER 6-14-99 B.N.C.



O.D.O.T. DISTRICT 2 SURVEY OFFICE

PERSONNEL

REFERENCE NO. 42

SHEET 44 OF 49

NOTES LOEHRKE

H.C. EURTIS

R.C. R. APPLE

DATE 7-26-91

WEATHER CLOUDY

TEMP. +78

ROUTE S.R. 64

COUNTY LUCAS

TOWNSHIP SWANTON

SECTION 33

T 7 N R 5 E

TYPE MONUMENT 6 R.R. S. I. K. E.

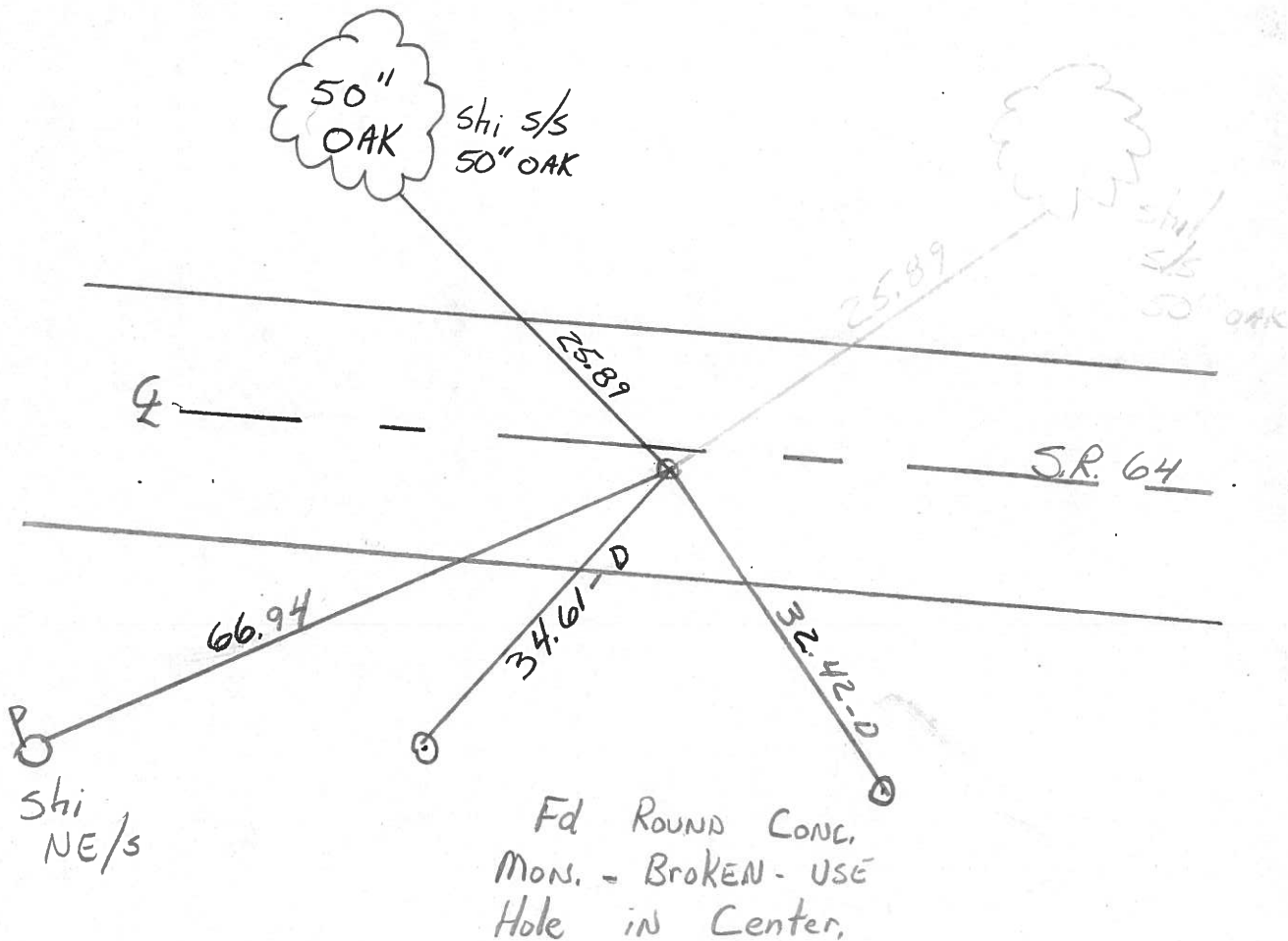
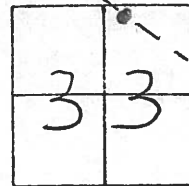
ON SURFACE - BELOW YES

LEFT - C PAV'T. - RIGHT 1.2

8.1 TO LT EDGE PAVEMENT

S.L.M. 345+33

Set P.K./WASHER  
3-5-92



County LUCAS S.R. 64

Date 5-22-81

Township SWANTON TWP

Weather clear

Section 33

Temp. 80°

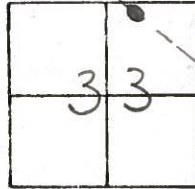
T7N, R5E

Personnel S Hoffmann

C. Loehrke

J. Household

# 42



BEGIN POINT CHECK

FD. R.R. SPK/+

10-28-81

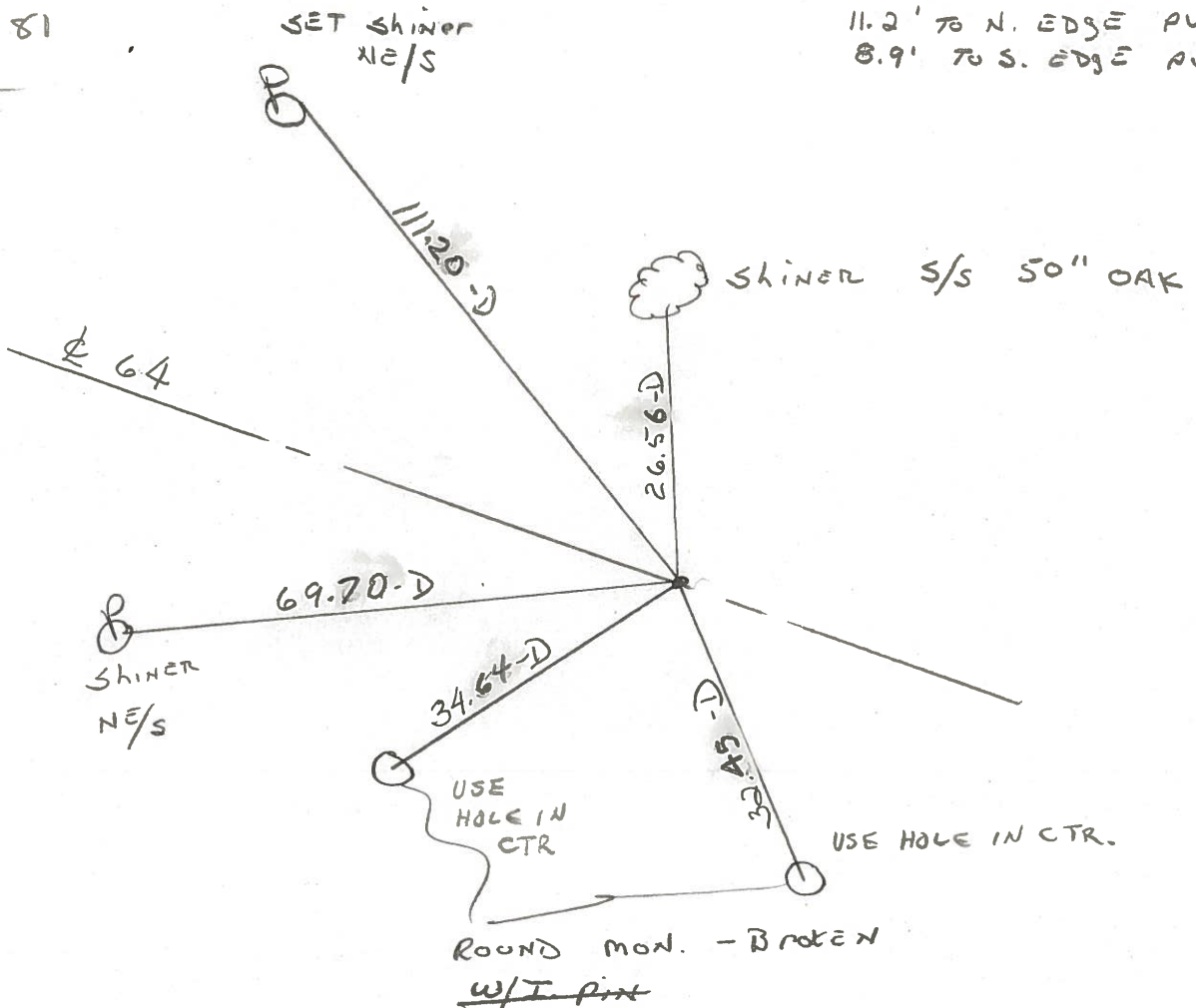
SAH

Fd. small R.R. SPK @ surface

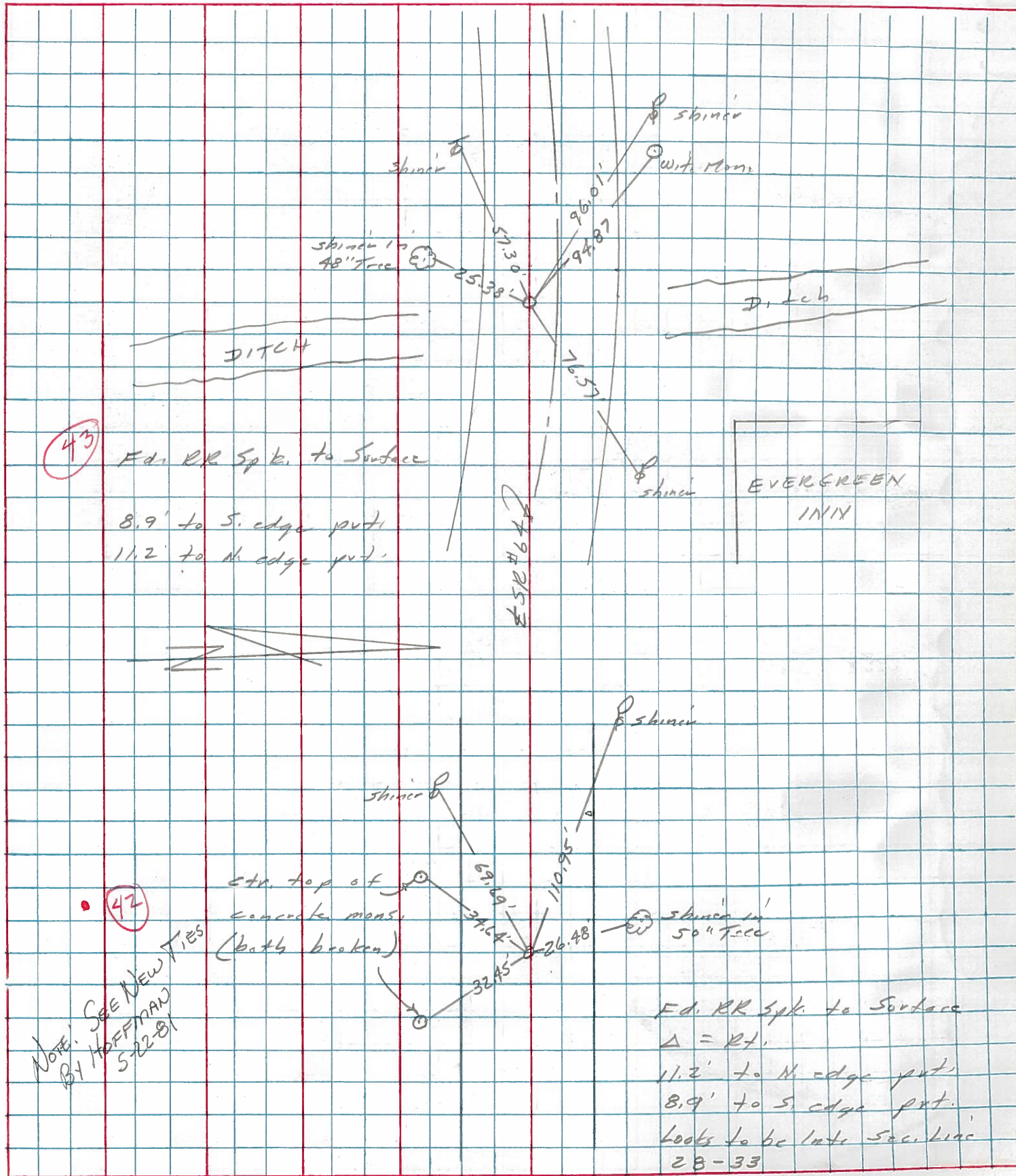
$\Delta = RT.$

11.2' TO N. EDGE PVT.

8.9' TO S. EDGE PVT.



PERSONNEL	TITLE	PERSONNEL	TITLE	COUNTY	DATE
Stake				Lucas	12 April 77
⊕				S. R. 64	WEATHER Warm
Crew				SEC. 295 - West	TEMP. 82°
DESCRIPTION				References to Control Points	
LEFT		CENTER LINE		RIGHT	
				JOB NO.	





PERSONNEL	TITLE	PERSONNEL	TITLE	COUNTY	DATE	WEATHER	TEMP.
Tamsic		Jackson		Lucas	July 21, 1971	<del>P. Cloudy</del>	80°
Neuser				#64			
Vanyo				S. R.			
Granata				SEC.			

DESCRIPTION Reference Monumenting S.R. #64 JOB NO. \_\_\_\_\_

