

O.D.O.T. DISTRICT 2 SURVEY OFFICE (USE ONLY)

PERSONNEL

REFERENCE NO. 43

SHEET 42 OF 56

NOTES RHOADES

DATE 6/15/17

ROUTE SR 64

H.C. POORE

WEATHER PTLY CLOUDY

COUNTY LUCAS

R.C. O'DONNELL

TEMP. 72°

TOWNSHIP WATERVILLE

SECTION 33

DWG BY RHOADES

PID R/W

T 7 N R 5 E

TYPE MONUMENT MAG/WASHER

ON SURFACE - ~~BELOW~~ ON

OFFSET 1.2' LT : ~~RT~~

9.2' TO LT EDGE PAVEMENT LDP:

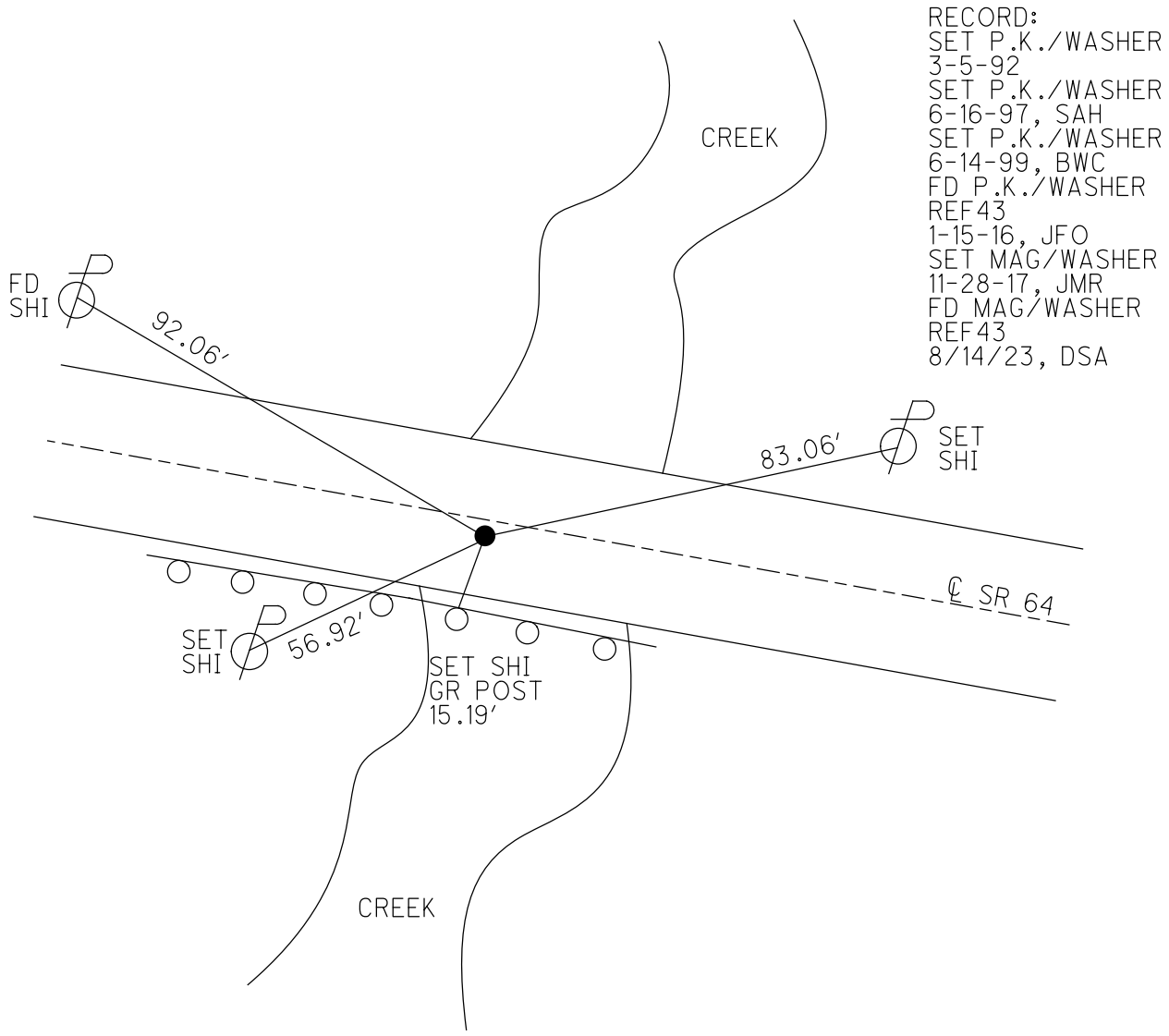
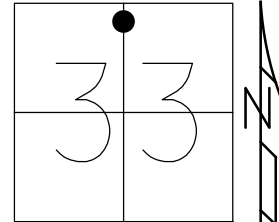
STATION: 363+89.67 N: 302577.663
E: 113493.763

HORIZ.DATUM: NAD83 2011

GEOID: NAVD88 2018

GRID: NORTHING: 681611.612

EASTING: 1603095.148

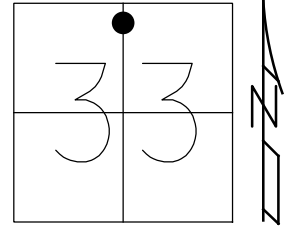


- RECORD:
 SET P.K./WASHER
 3-5-92
 SET P.K./WASHER
 6-16-97, SAH
 SET P.K./WASHER
 6-14-99, BWC
 FD P.K./WASHER
 REF43
 1-15-16, JFO
 SET MAG/WASHER
 11-28-17, JMR
 FD MAG/WASHER
 REF43
 8/14/23, DSA

O.D.O.T. DISTRICT 2 SURVEY OFFICE (USE ONLY)

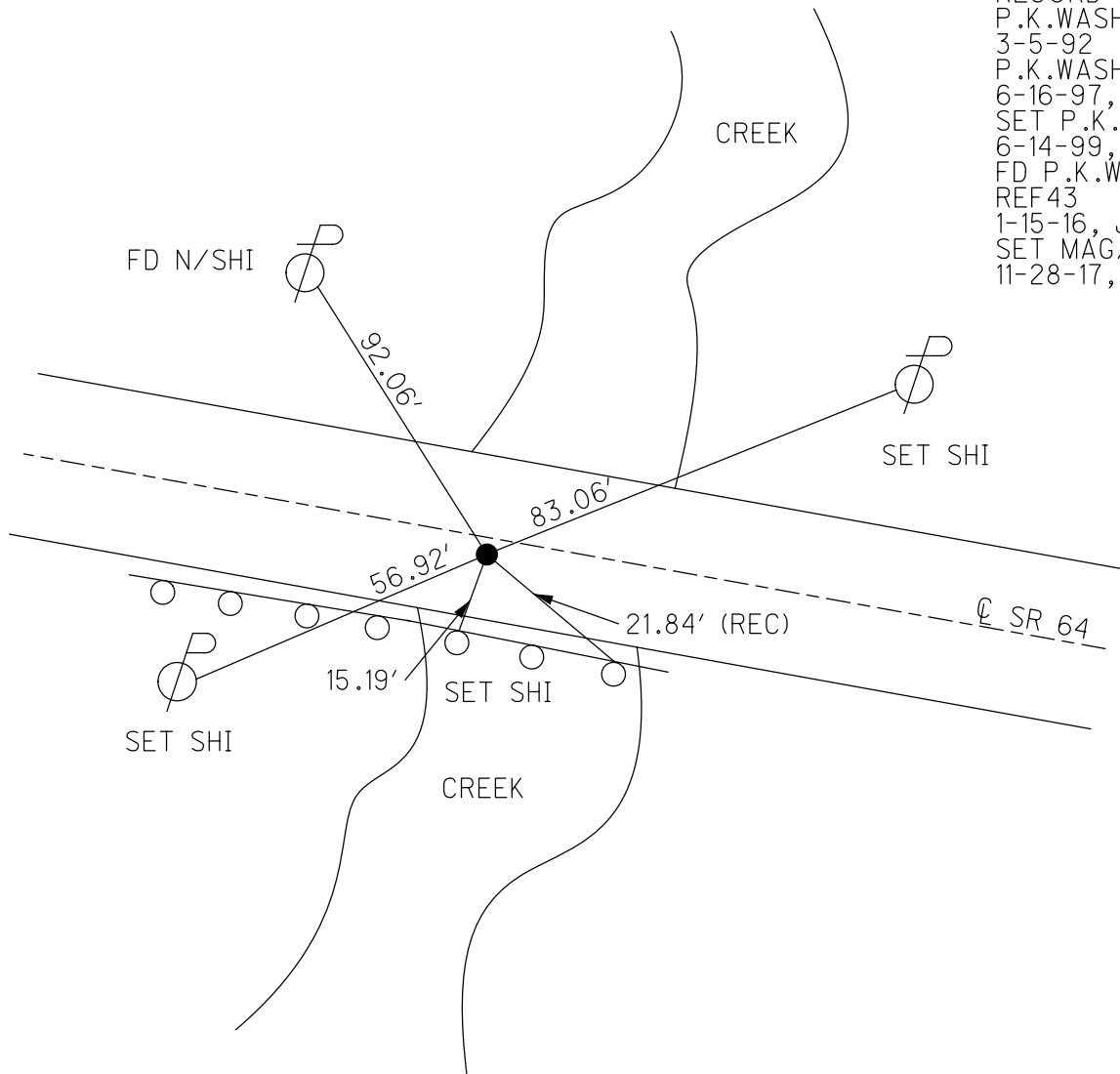
PERSONNEL _____ REFERENCE NO. 43 SHEET 42 OF 50
 NOTES RHOADES DATE 6-15-17 ROUTE SR 64
 H.C. POORE WEATHER PT CLOUDY COUNTY LUCAS
 R.C. O'DONNELL TEMP. 72° TOWNSHIP WATERVILLE
 _____ SECTION 33
 _____ T N R E

TYPE MONUMENT P.K.WASHER
 ON SURFACE - ~~BELOW~~ ON _____
 LEFT - Q PAV'T - ~~RIGHT~~ 1.2'
9.2' TO LT EDGE PAVEMENT
 S.L.M. 363+89.67



Grid: Northing: 681611.6117 Easting: 1603095.1481

- RECORD:
 P.K.WASHER SET
 3-5-92
 P.K.WASHER SET
 6-16-97, SAH
 SET P.K.WASHER
 6-14-99, BWC
 FD P.K.WASHER
 REF43
 1-15-16, JFO
 SET MAG/WASHER
 11-28-17, JMR



O.D.O.T. DISTRICT 2 SURVEY OFFICE

PERSONNEL

REFERENCE NO. 43

SHEET 3 OF 7

NOTES Huss

H.C. Dan Dusein

R.C. Moser

DATE 10-31-96

WEATHER Pt. Cldy

TEMP. + 34° F

ROUTE SR 64

COUNTY Lucas

TOWNSHIP Swanton

SECTION 33

T 7 N R 5 E

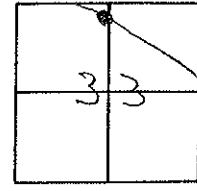
TYPE MONUMENT lg RR. Spk.

~~ON SURFACE~~ - BELOW Yes

~~LEFT~~ PAV ~~RIGHT~~ 1.2 Lt.

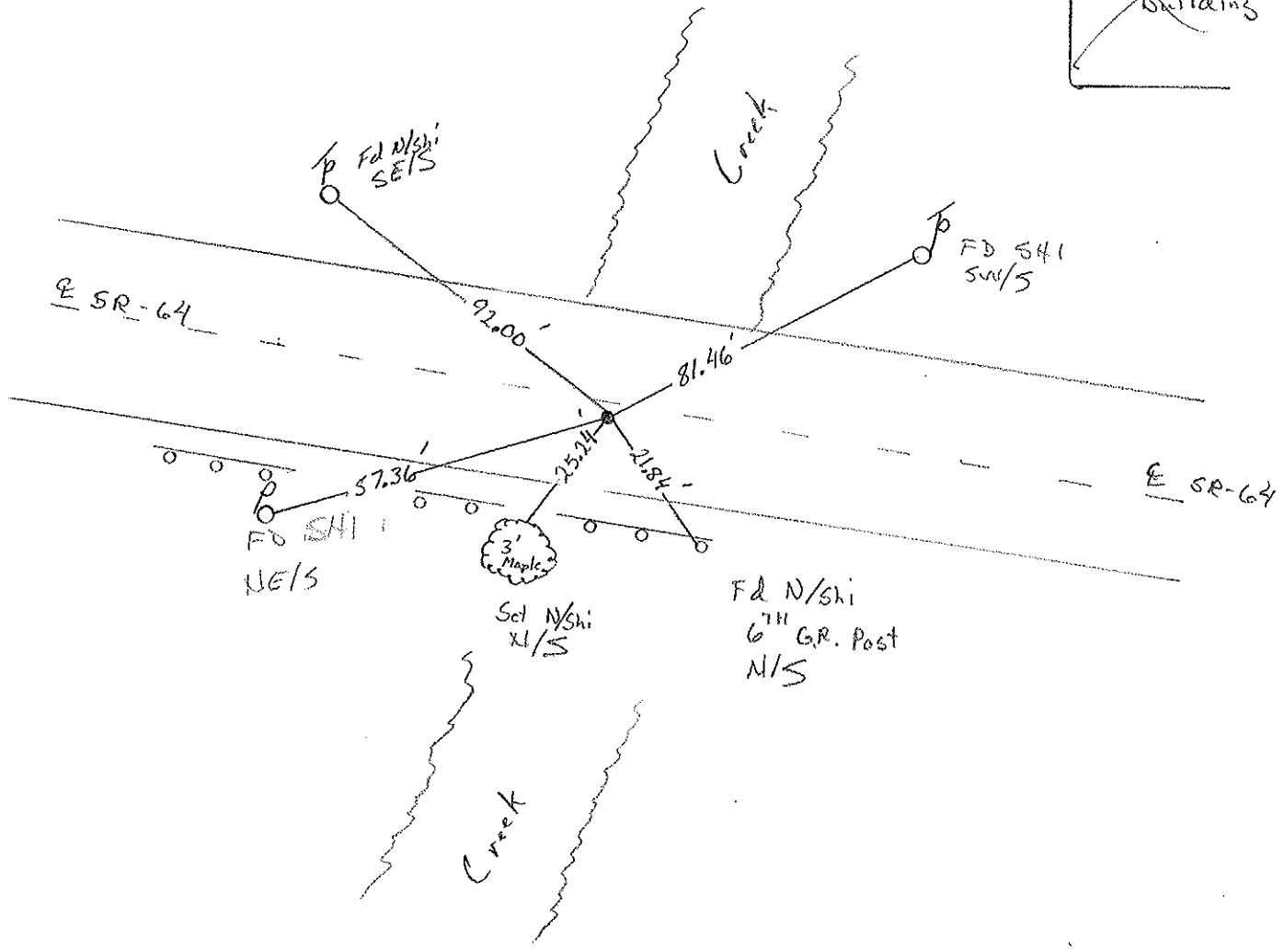
9.2 TO Lt. EDGE PAVEMENT

S.L.M. 364 487



PK./W Set 3-5-92 Set PK/W 6-16-97 S.M.H. SET PK & WASHER 6/14/99 BWC

~~GONE
ABAND.
Buildings~~



O.D.O.T. DISTRICT 2 SURVEY OFFICE

PERSONNEL

REFERENCE NO. 43

SHEET 45 OF 49

NOTES LOEHRKE

H.C. CURTIS

R.C. RIPPLE

GEYMAN

DATE 7-26-91

WEATHER CLOUDY

TEMP. +78

ROUTE S.P. 64

COUNTY LUCAS

TOWNSHIP SWAUBAN

SECTION 33

T R

TYPE MONUMENT Lg R.R Spike

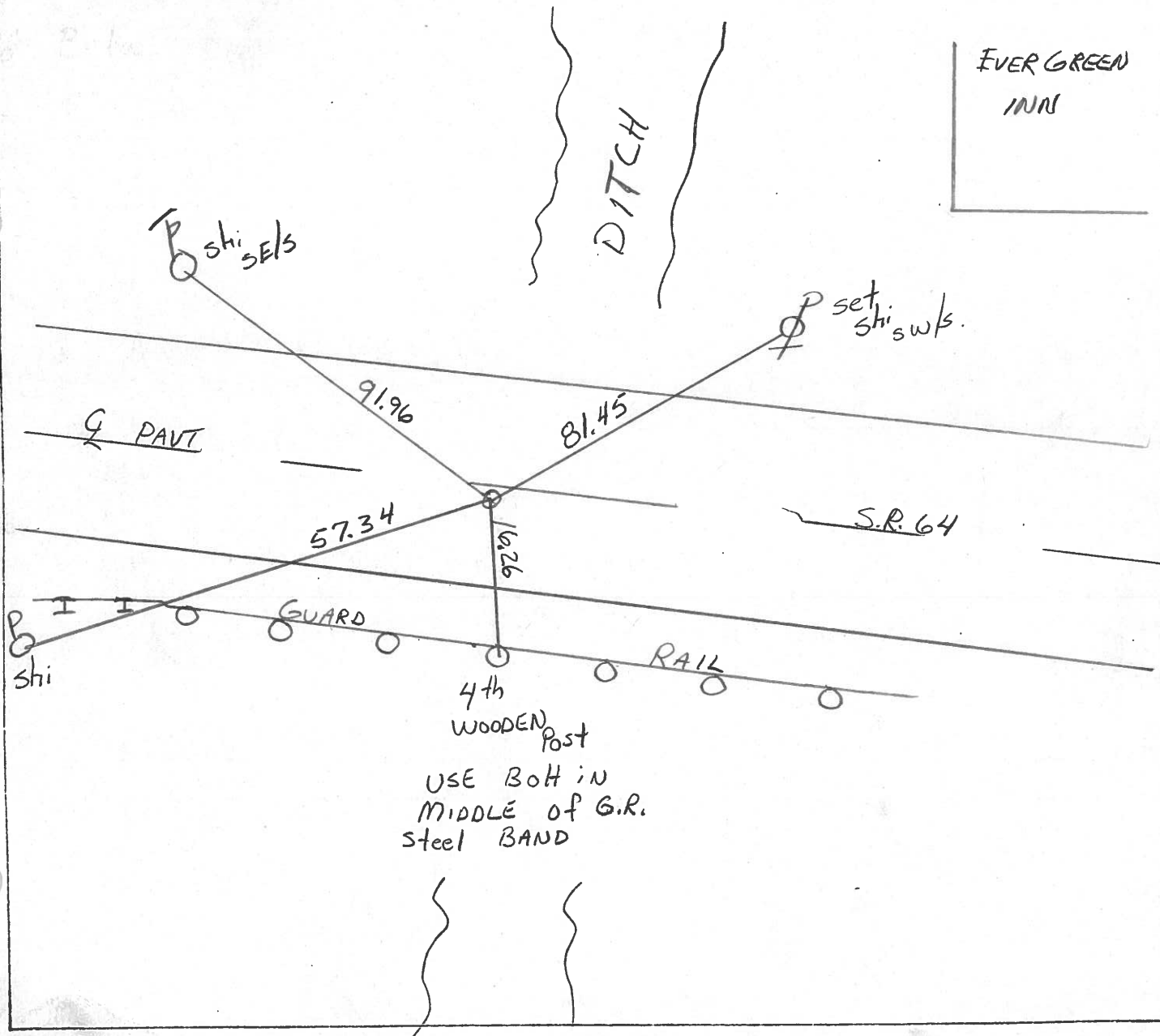
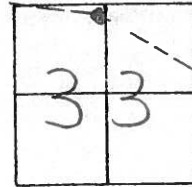
Set. P.K. / WASHER
3-5-92

ON SURFACE - BELOW YES

LEFT - & PAV'T. - RIGHT 1.1

B.B TO Lt EDGE PAVEMENT

S.L.M. 364 +79



County LUCAS S.R. 64

Date 5-22-81

Township SWANTON

Weather clear

Section 33

Temp. 80°

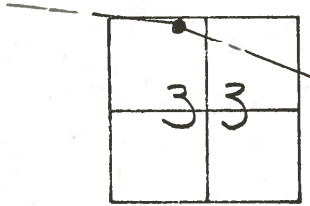
T7N, R5E

Personnel S. Hoffmann

C. Loehrke

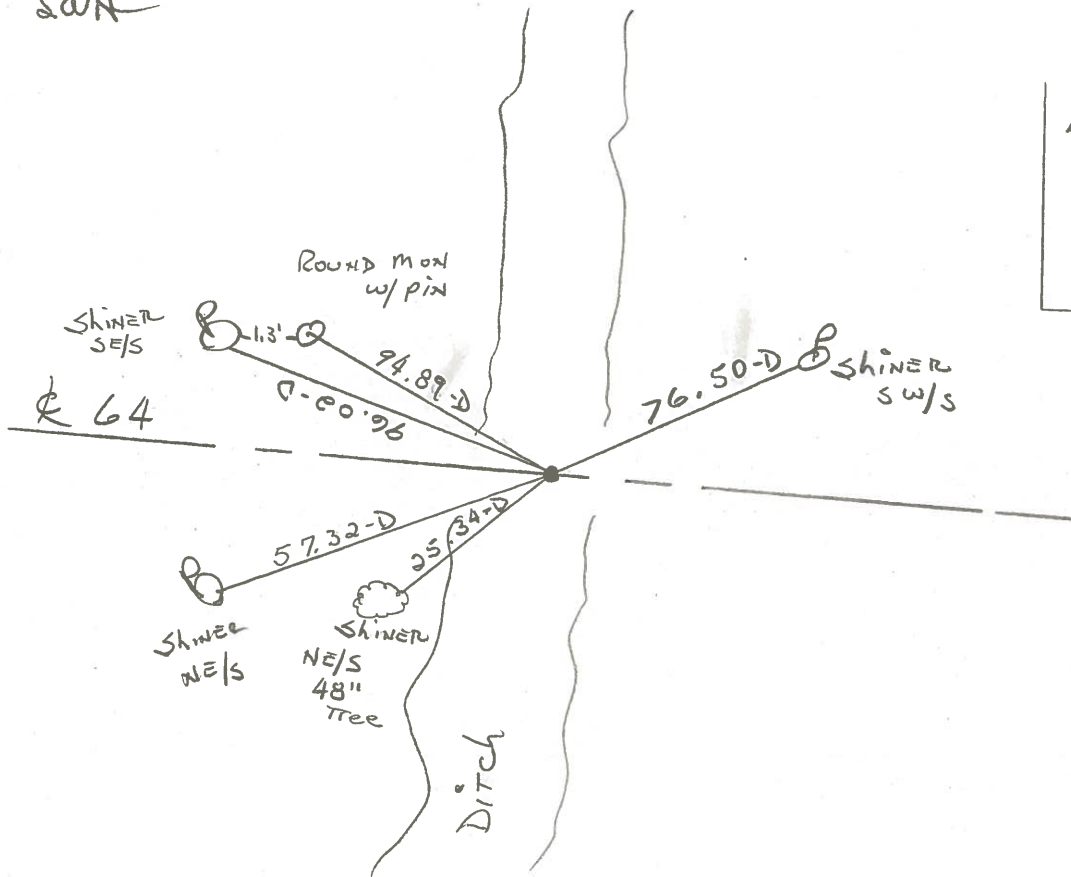
J. Householder

43



FD. R.R. SPK.
10-28-81
SWN

FD. SMALL R.R. SPK @ SURFACE
8.9' TO S. EDGE PUT.
11.2' TO N. EDGE PUT.

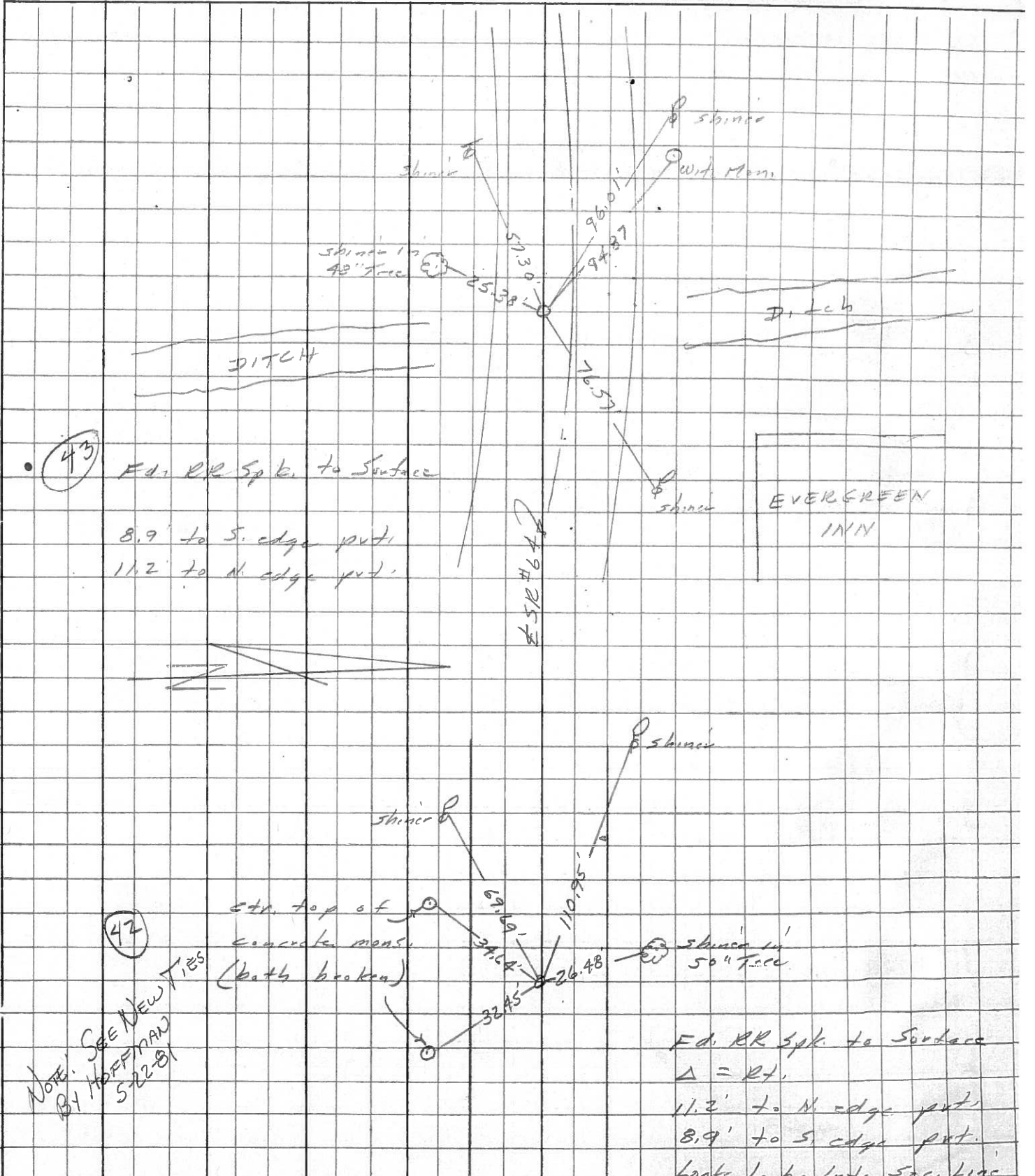


EVERGREEN
INN

PERSONNEL	TITLE	PERSONNEL	TITLE	COUNTY	DATE	WEATHER	TEMP.
Stape				Lucas	12 April 77	Warm	82°
E				S. R. 64			
Crew				SEC. 295 - West			

DESCRIPTION: References to Control Points JOB NO. _____

LEFT CENTER LINE RIGHT



PERSONNEL	TITLE	PERSONNEL	TITLE	COUNTY	DATE	WEATHER	TEMP.
Tomsic		Jackson		Lucas	July 21, 1971	P. Cloud	80°
Neuser				S. R. #64			
Vanyo							
Granata				SEC.			
DESCRIPTION	Reference Monumenting S.R. #64			JOB NO.			

