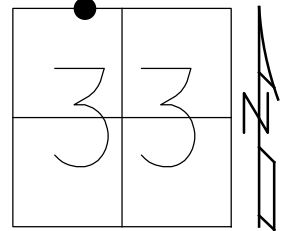


O.D.O.T. DISTRICT 2 SURVEY OFFICE (USE ONLY)

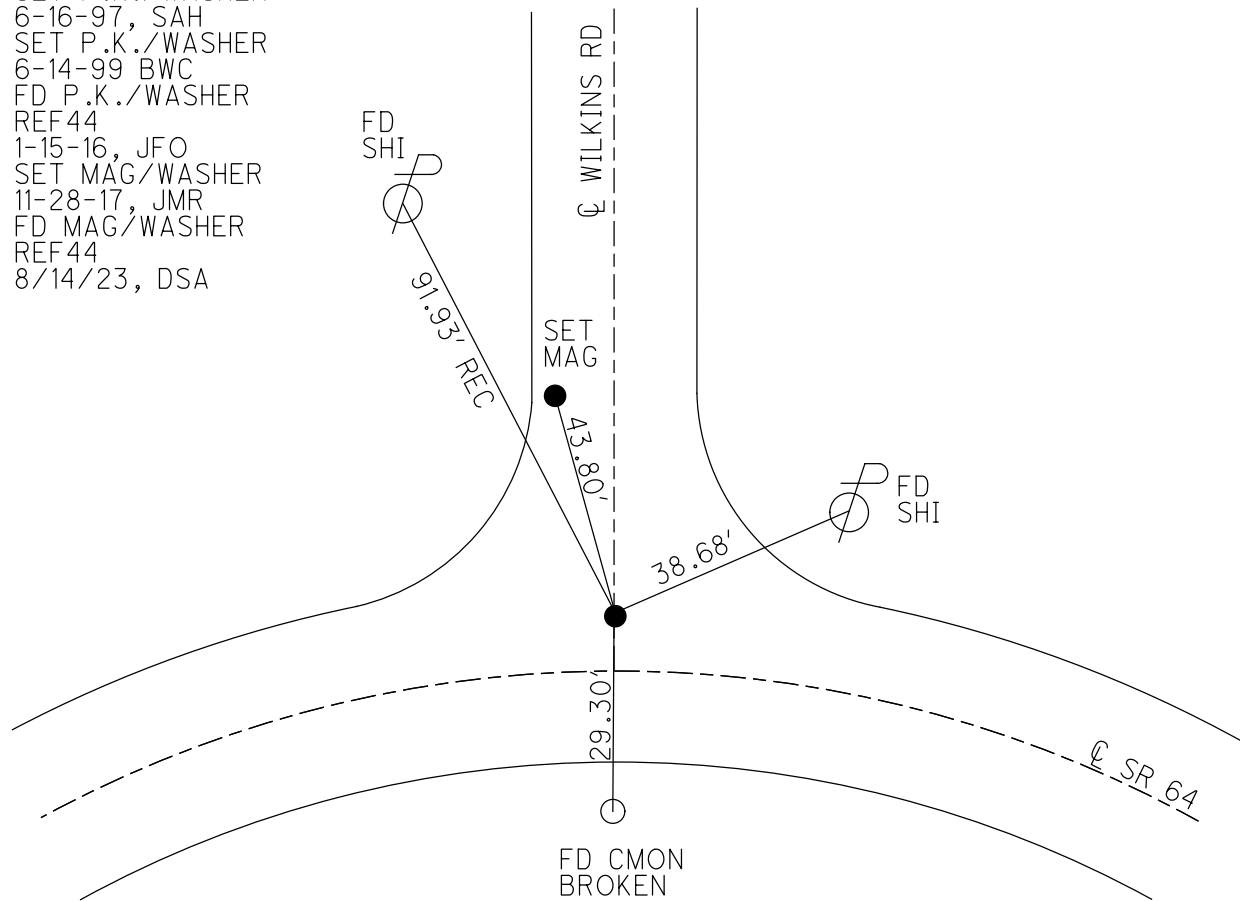
PERSONNEL _____ REFERENCE NO. 44 SHEET 43 OF 56
 NOTES RHOADES DATE 6/14/17 ROUTE SR 64
 H.C. POORE WEATHER PTLY CLOUDY COUNTY LUCAS
 R.C. O'DONNELL TEMP. 72° TOWNSHIP WATERVILLE
 DWG BY RHOADES PID R/W SECTION 33
 T 7 N R 5 E

TYPE MONUMENT MAG/WASHER
 ON SURFACE - ~~BELOW~~ ON
 OFFSET 9.6' LT : RT
ON TO RT EDGE PAVEMENT
 STATION: 377+64.49 LDP:
 N: 302986.747
 E: 112181.147



HORZ.DATUM: NAD83 2011 GEOID: NAVD88 2018
 GRID: NORTHING: 682037.9968 EASTING: 1601788.1212

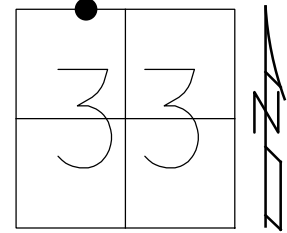
RECORD:
 SET P.K./WASHER
 6-16-97, SAH
 SET P.K./WASHER
 6-14-99 BWC
 FD P.K./WASHER
 REF44
 1-15-16, JFO
 SET MAG/WASHER
 11-28-17, JMR
 FD MAG/WASHER
 REF44
 8/14/23, DSA



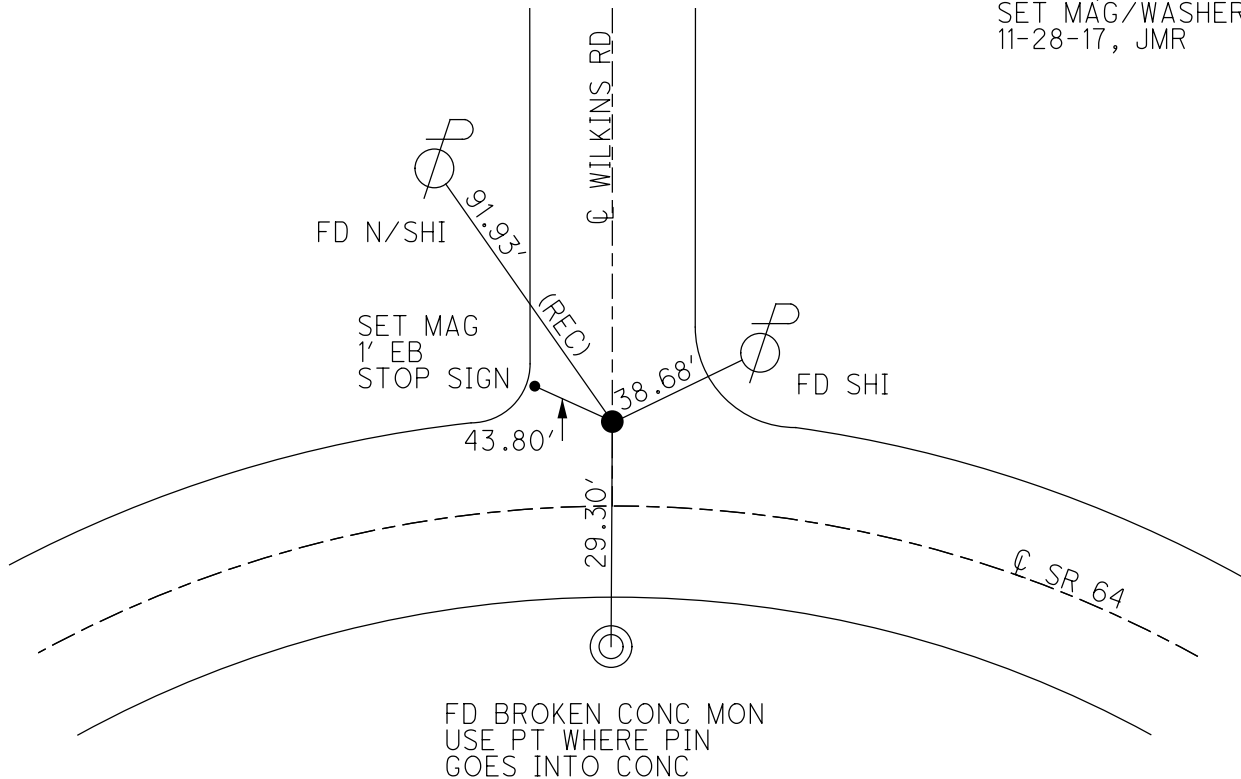
O.D.O.T. DISTRICT 2 SURVEY OFFICE (USE ONLY)

PERSONNEL _____ REFERENCE NO. 44 SHEET 43 OF 50
 NOTES RHOADES DATE 6-14-17 ROUTE SR 64
 H.C. POORE WEATHER PT CLOUDY COUNTY LUCAS
 R.C. O'DONNELL TEMP. 72° TOWNSHIP WATERVILLE
 SECTION 33
 T 7 N R 5 E

TYPE MONUMENT P.K.WASHER
 ON SURFACE - ~~BELOW~~ ON _____
~~LEFT~~ - CL PAV'T - RIGHT 9.6'
ON TO RT EDGE PAVEMENT
 S.L.M. 377+64.49
 Grid: Northing: 682037.9968 Easting: 1601788.1212



RECORD:
 SET P.K.WASHER
 6-16-97, SAH
 SET P.K.WASHER
 6-14-99 BWC
 FD P.K.WASHER
 REF44
 1-15-16, JFO
 SET MAG/WASHER
 11-28-17, JMR



O.D.O.T. DISTRICT 2 SURVEY OFFICE

PERSONNEL _____

REFERENCE NO. 44

SHEET 4 OF 7

NOTES Huss

H.C. VanDusen

R.C. Moser

DATE 10-31-96

WEATHER Pt cldy

TEMP. +34° F

ROUTE SR 64

COUNTY Lucas

TOWNSHIP Swanton

SECTION 33

T 7 N R 5 E

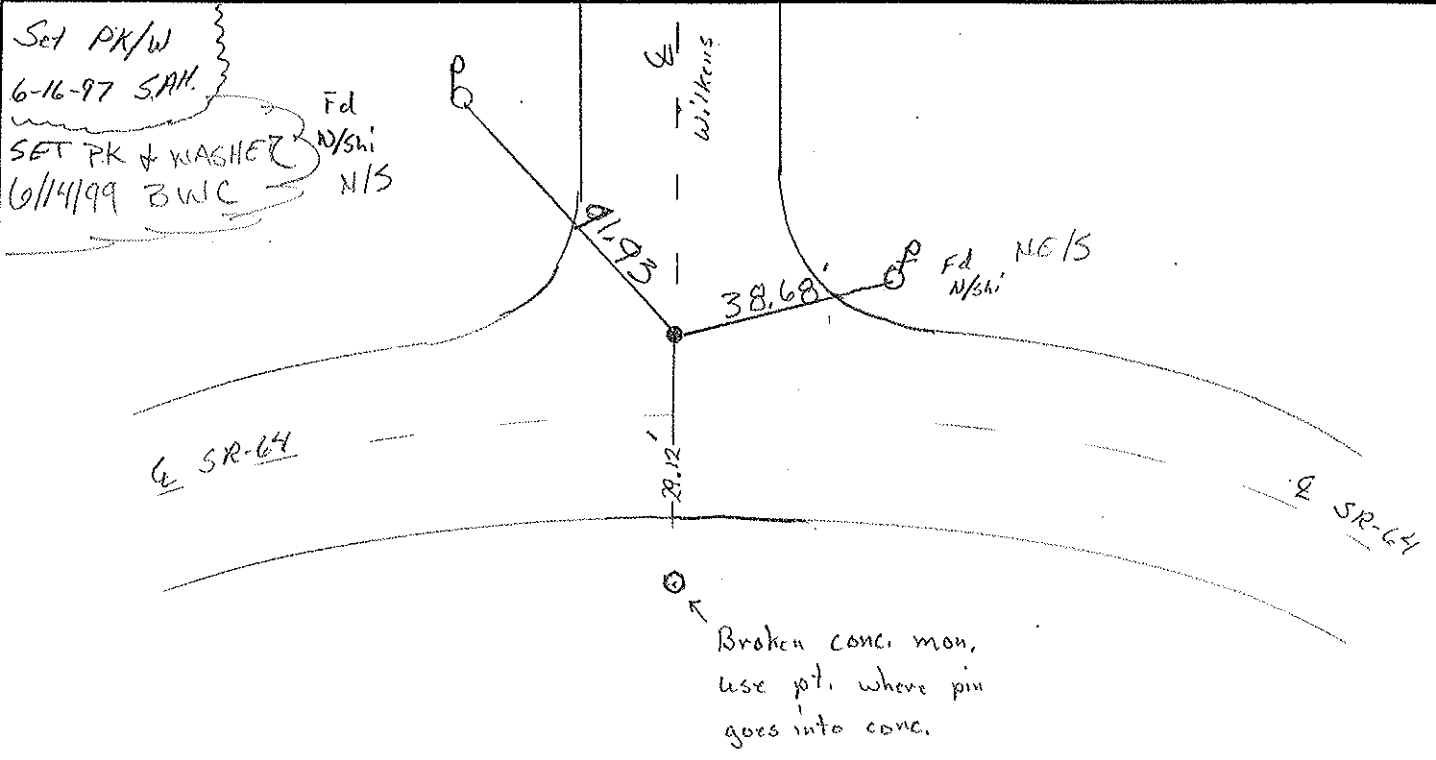
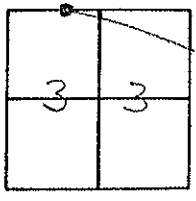
TYPE MONUMENT RR Spike

~~ON SURFACE~~ - BELOW .1

~~VERTICAL PAINT~~ - RIGHT 9.6 RT

on TO RT EDGE PAVEMENT

S.L.M. 378+69



O.D.O.T. DISTRICT 2 SURVEY OFFICE

PERSONNEL

REFERENCE NO. 44

SHEET 46 OF 49

NOTES LOEHARKE

H.C. CURTIS

R.C. RIAPLE

GEYMAN

DATE 7-26-91

WEATHER CLOUDY

TEMP. +78

ROUTE S.R. 64

COUNTY LUCAS

TOWNSHIP SWANTON

SECTION 33

T 7 N R 5 E

TYPE MONUMENT R.R. SPIKE

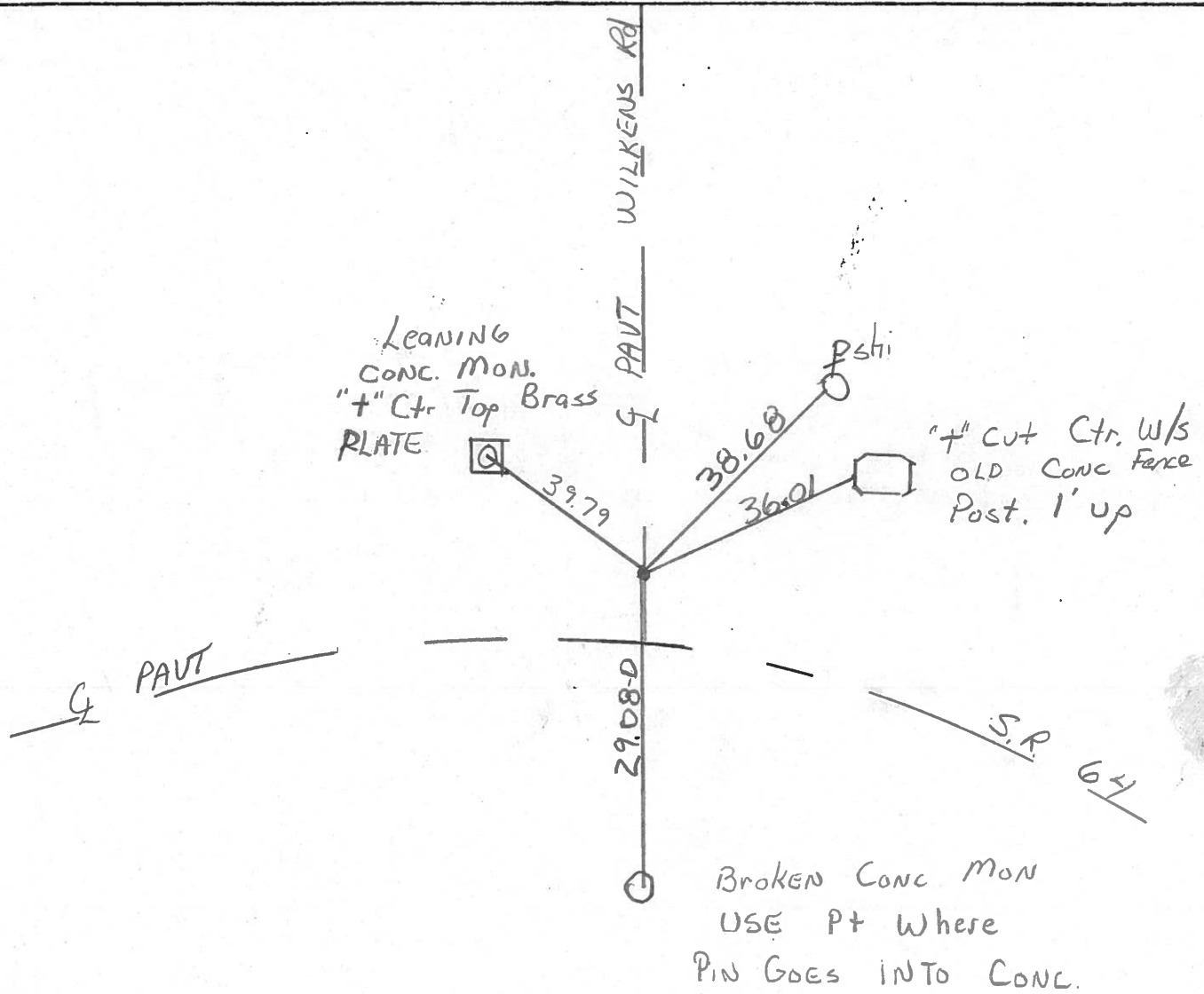
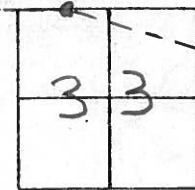
Set P.K. WASHER
3-5-92

ON SURFACE - ~~BELOW~~ YES

~~LEFT~~ - & PAVT. - RIGHT 9.5

~~ON TO RT~~ EDGE PAVEMENT

S.L.M. 378+53



County LUCAS S.R. 64

Date 5-22-81

Township SWANTON

Weather clear

Section 33

Temp. 80°

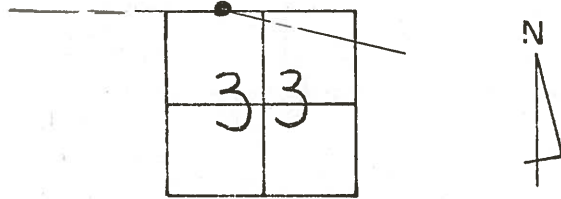
T1N, R5E

Personnel S Hoffmann

C. Doehrke

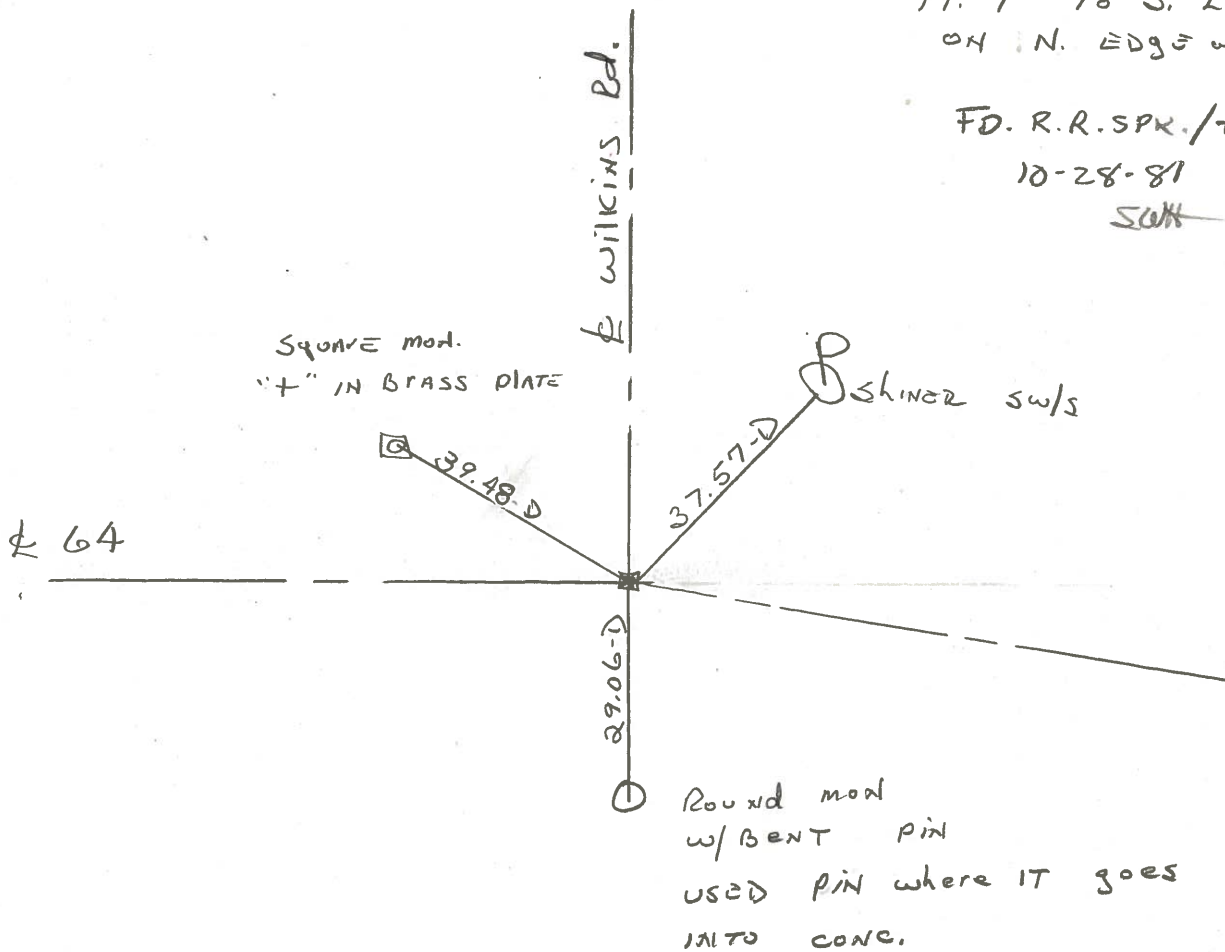
D. Householder

44



Fd I. Bolt @ surface
19.7' TO S. Edge PUT.
ON N. EDGE of PUT.

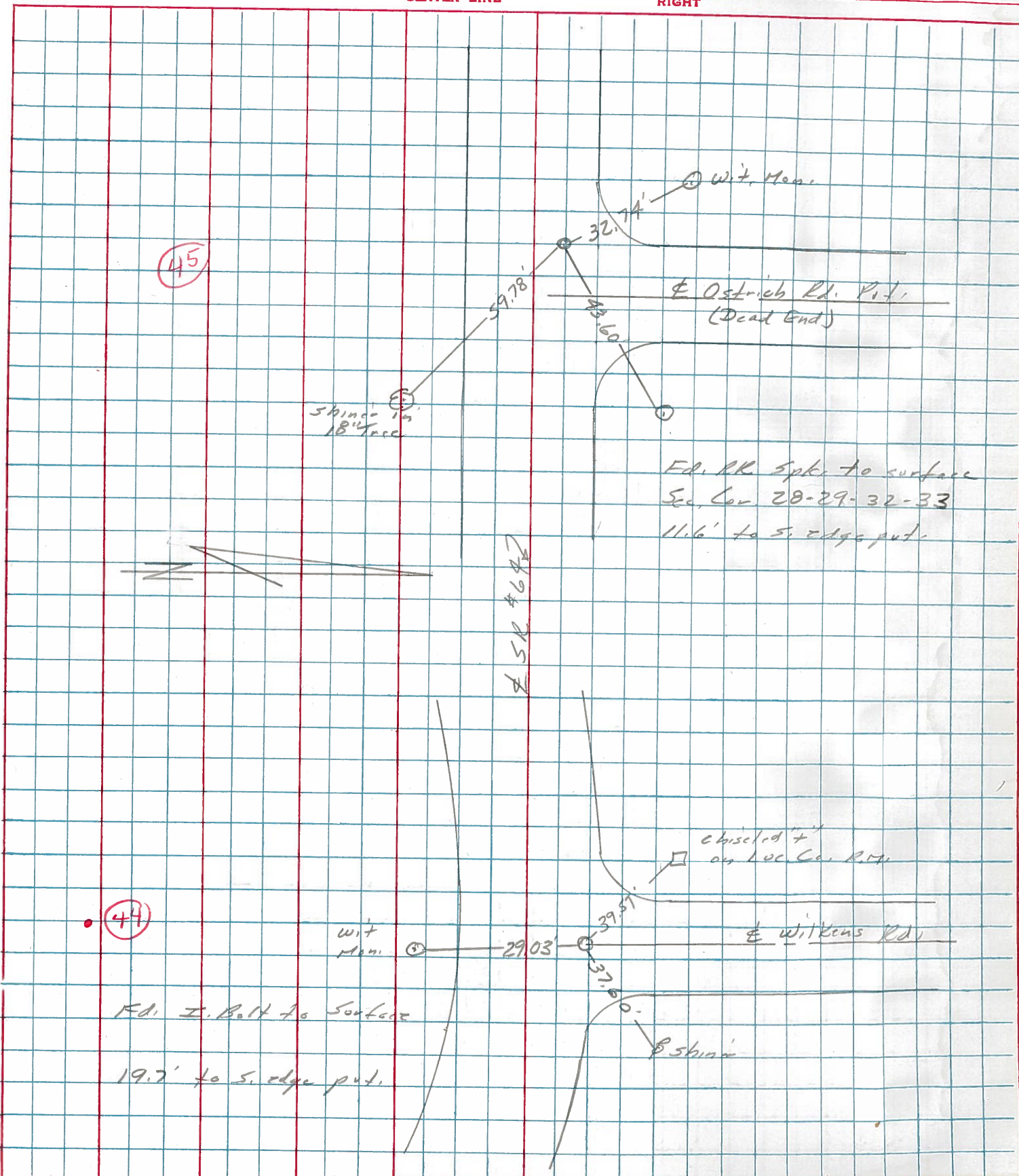
FD. R.R. SPR. /+
10-28-81
~~SWH~~



PERSONNEL	TITLE	PERSONNEL	TITLE
Stone			
+			
Crew			

COUNTY Lucas DATE 13 April 77
 S. R. 64 WEATHER Warm
 SEC. 295 - West TEMP. 70°

DESCRIPTION References to Control Points JOB NO.
 LEFT CENTER LINE RIGHT



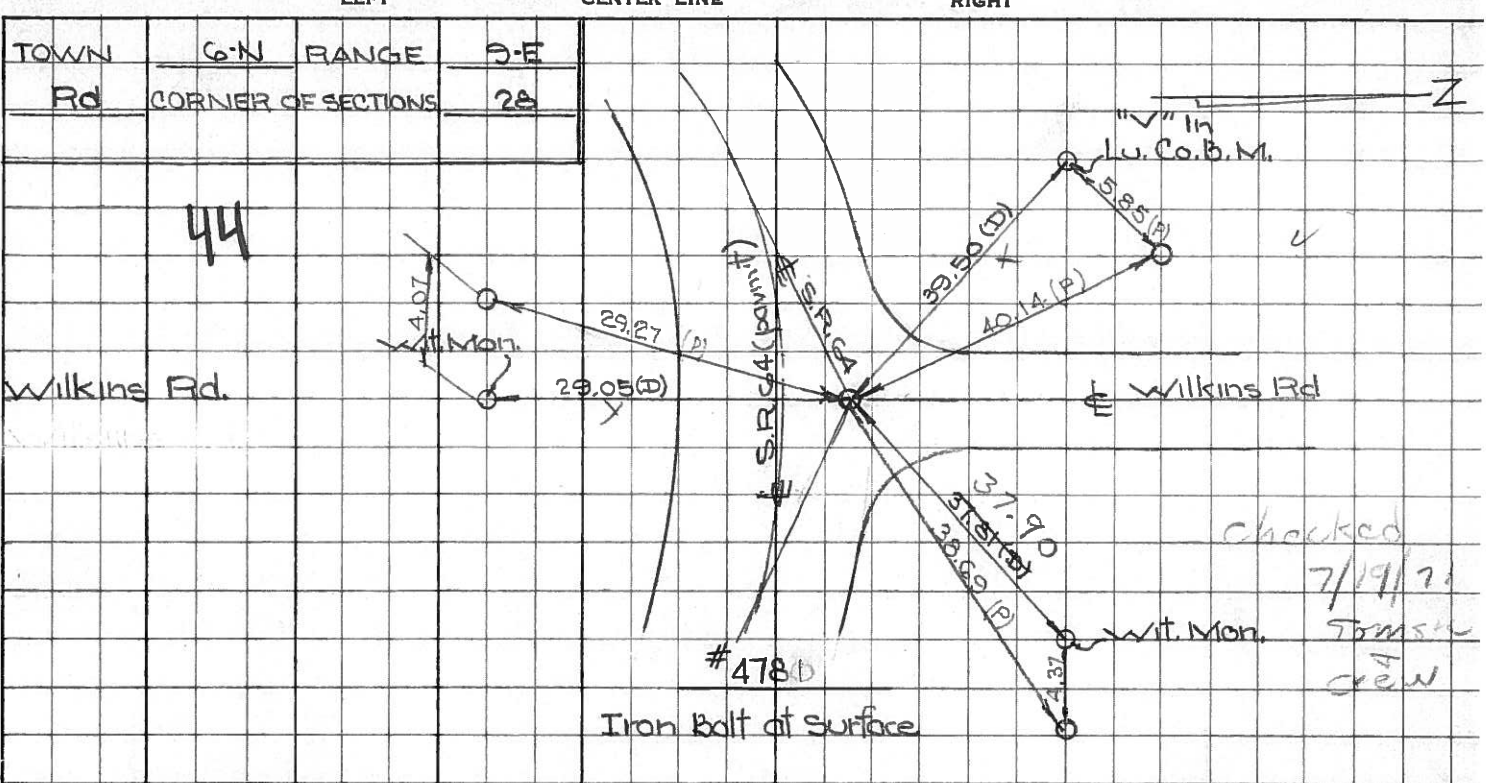
PERSONNEL TITLE PERSONNEL TITLE

COUNTY Lucas DATE Aug. 1, 1968

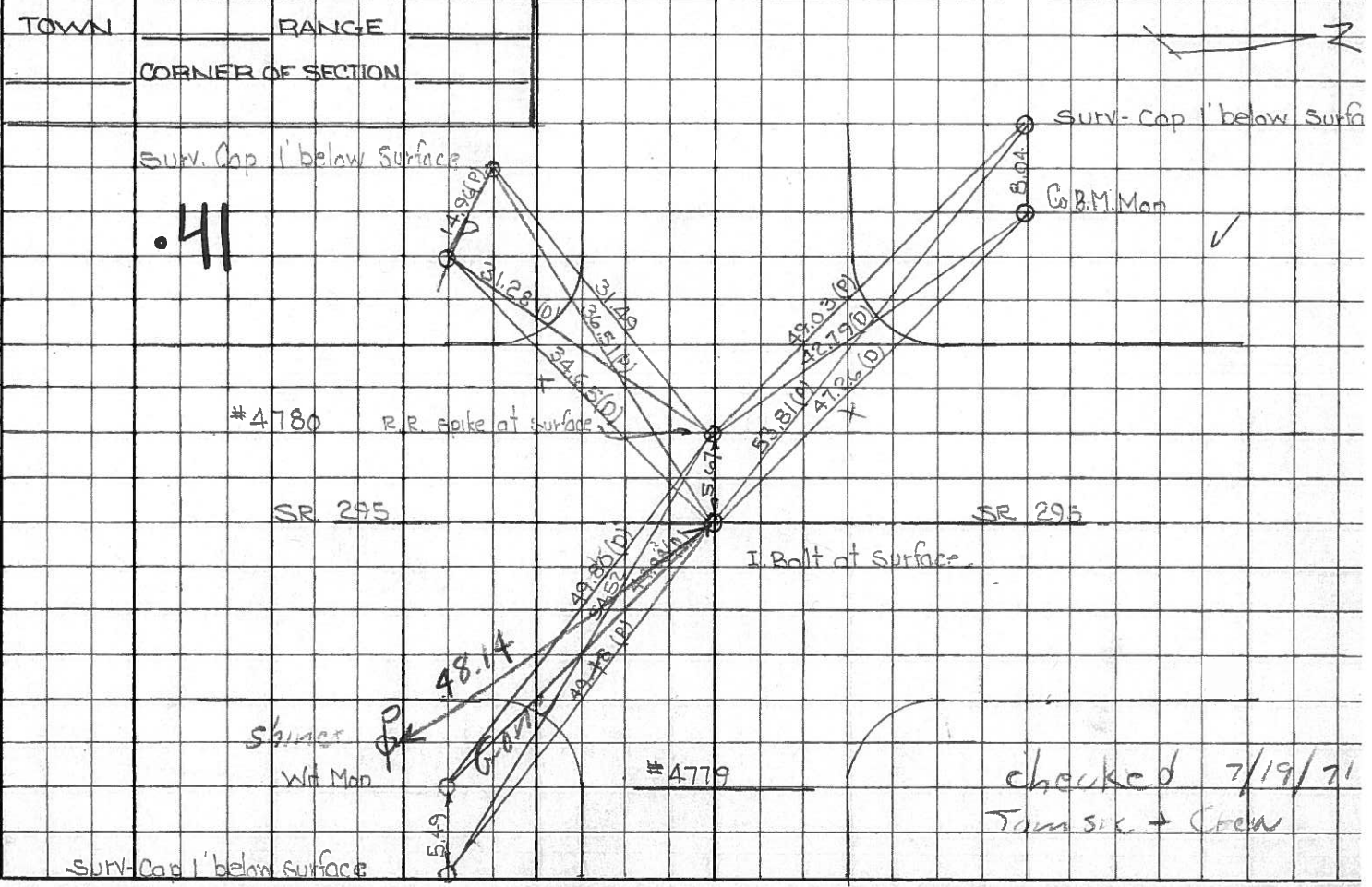
D. Curtis
 J. Teal
 J. Brindley

S. R. Co4 WEATHER mild
 SEC. TEMP. 75°±

DESCRIPTION S.R. Co4 - Ref. Mon. & Control Points JOB NO. 02994(0)



checked
 7/19/71
 Tam Six
 crew



checked 7/19/71
 Tam Six + crew

2-9
 (old)

PERSONNEL TITLE PERSONNEL TITLE COUNTY Lucas DATE 3 Mar. 66
 Stone Beck S. R. #64 WEATHER Mild
 Brindley Schroder SEC. Whitehouse - w. TEMP. 60°
 DESCRIPTION Rets. To Control Pts. JOB NO.

	LEFT	CENTER LINE	RIGHT	
44				
#205	Int. Wilkens Rd. 4" L.H. Ed. Stone 2" Below Surface	29.11' 37.87' 39.58'	29.05' 31.81' 39.50'	S. To Con. Ref. Mon. (D) N.E. To Con. Ref. Mon. (D) N.W. To "V" in Lu. Co. B.M. (D)
45				
#204	Int. Ostrich Rd. Ed. Brass Plate 1" Below Surface	43.64' 32.64'		N.E. To Con. Wrt. Mon. (D) N.W. To Con. Wrt. Mon. (D) 30.00' E. To Con. Wrt. Mon. (D)
46				
#203	Int. Jeffers Rd. Ed. Brass Plate 1 1/2" Below Surface	38.15' 40.62' 48.20'		N.W. To "T" in Lu. Co. B.M. (D) N.E. To Con. Wrt. Mon. (D) S.W. To Con. Wrt. Mon. (D)
47				
#202	Int. Mamore Rd. Ed. Hole in Con. 2" Below Surface	34.76' 31.63' 36.47' 36.24'		N.W. To Con. Wrt. Mon. (D) N.E. To Con. Wrt. Mon. (D) S.W. To Con. Wrt. Mon. (D) S.E. To "T" in Lu. Co. B.M. (D)
48				
#201	N.E. & Sec. 30 & 31 Lat. Swanton Rd. N. Ed. R.R. Spk. To Surface	37.82' 38.77' 40.76'		S.W. To Con. Wrt. Mon. (D) S.E. To Con. Wrt. Mon. (D) N.W. To Hole in Lu. Co. B.M. (D)
49				
#200	E.F.W. & Sec. 30 Ed. R.R. Spk. To Surface	27.86' 40.26' 29.93' 71.54'		E. To Hole in Lu. Co. B.M. (D) N.E. To Con. Wrt. Mon. (D) W. To Con. Wrt. Mon. (D) N.W. To Shire in P.S. (D)