

O.D.O.T. DISTRICT 2 SURVEY OFFICE (USE ONLY)

PERSONNEL

REFERENCE NO. 45

SHEET 44 OF 56

NOTES RHOADES DATE 6/14/17  
 H.C. POORE WEATHER PTLY CLOUDY  
 R.C. O'DONNELL TEMP. 72°

ROUTE SR 64  
 COUNTY LUCAS  
 TOWNSHIP WATERVILLE  
 SECTION 33

DWG BY RHOADES PID R/W

T 7 N R 5 E

TYPE MONUMENT MAG/WASHER

ON SURFACE - ~~BELOW~~ ON \_\_\_\_\_

OFFSET CL PAVEMENT 1.8' ± : RT

8.0' TO RT EDGE PAVEMENT LDP:  
 N: 302998.235  
 E: 110877.071

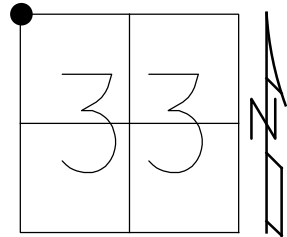
STATION: 390+68.54

HORIZ.DATUM: NAD83 2011

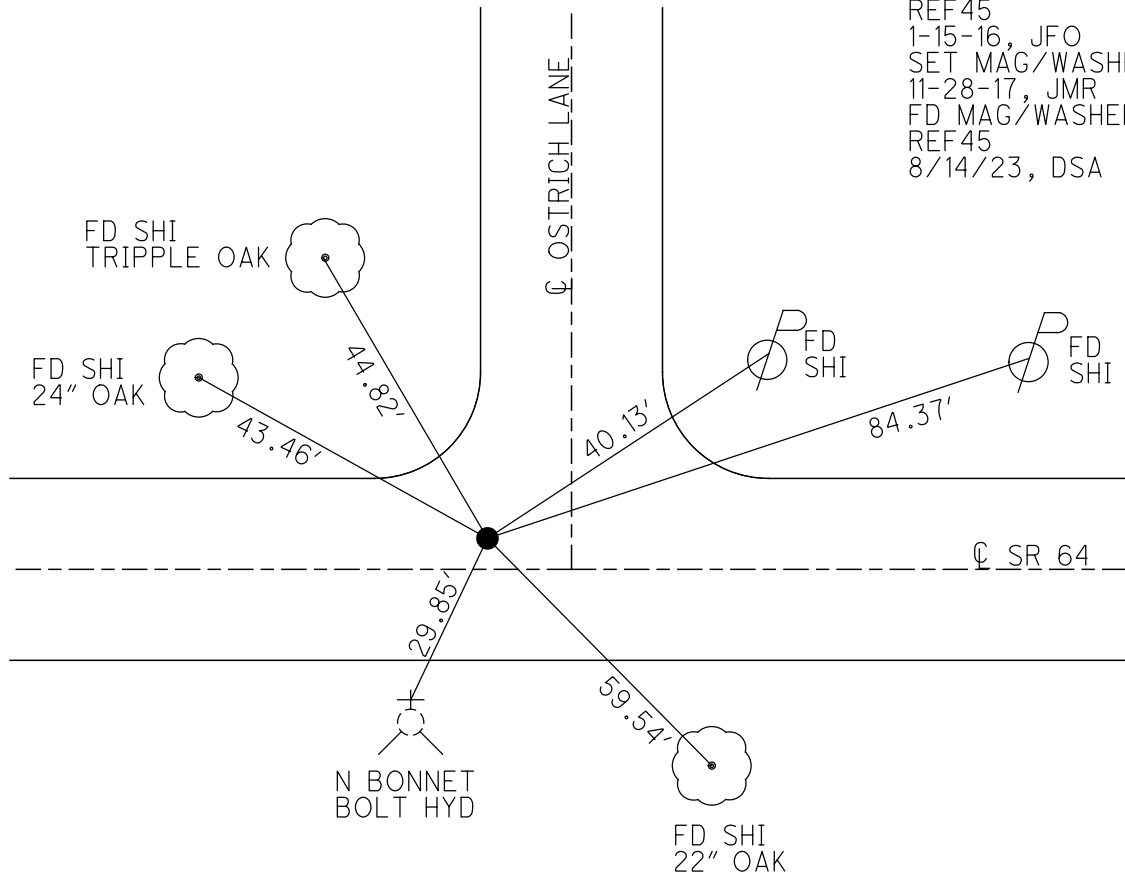
GEOID: NAVD88 2018

GRID: NORTHING: 682066.602

EASTING: 1600484.381



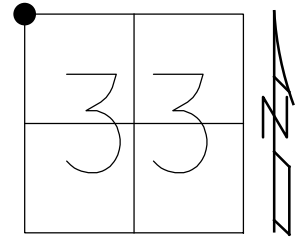
RECORD:  
 SET P.K./WASHER  
 6-16-97, SAH  
 SET P.K./WASHER  
 6-14-99 BWC  
 FD P.K./WASHER  
 REF45  
 1-15-16, JFO  
 SET MAG/WASHER  
 11-28-17, JMR  
 FD MAG/WASHER  
 REF45  
 8/14/23, DSA



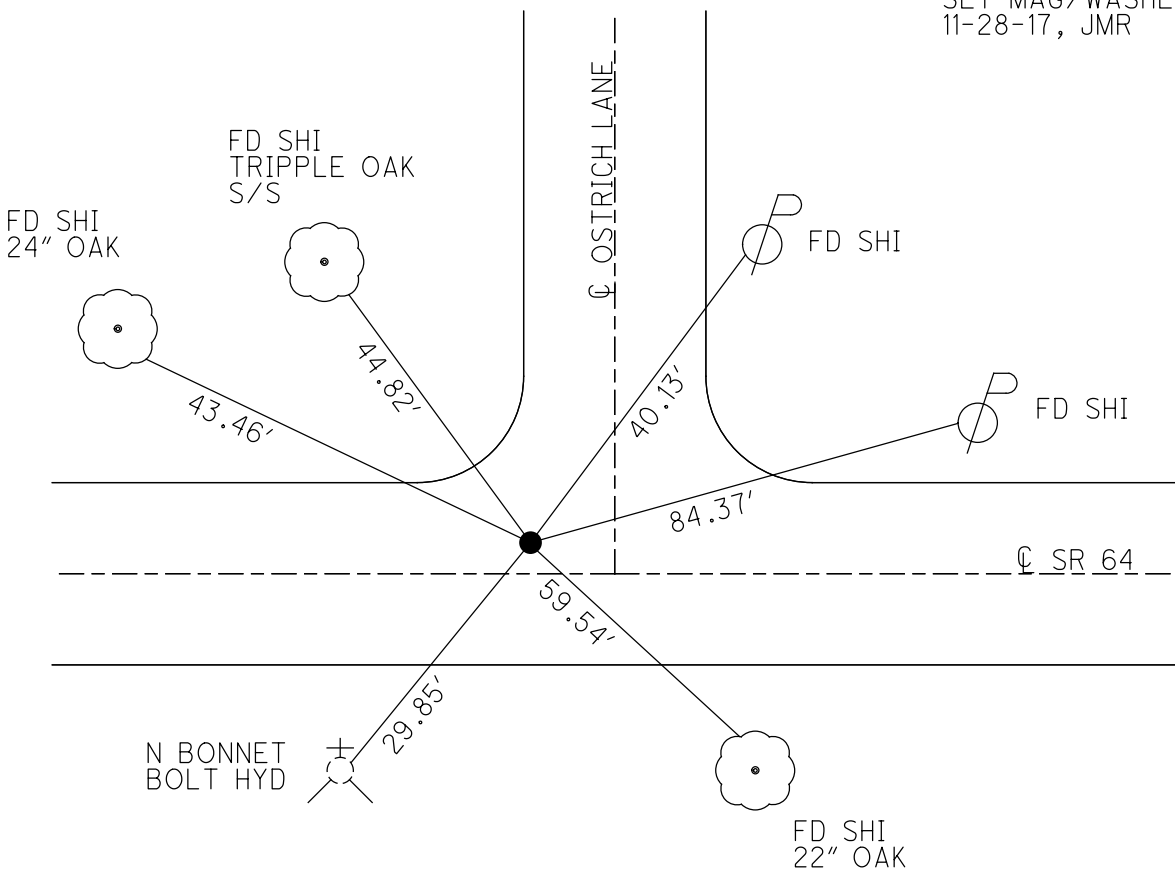
O.D.O.T. DISTRICT 2 SURVEY OFFICE (USE ONLY)

PERSONNEL \_\_\_\_\_ REFERENCE NO. 45 SHEET 44 OF 50  
 NOTES RHOADES DATE 6-14-17 ROUTE SR 64  
 H.C. POORE WEATHER PT CLOUDY COUNTY LUCAS  
 R.C. O'DONNELL TEMP. 72° TOWNSHIP WATERVILLE  
 \_\_\_\_\_ SECTION 33  
 \_\_\_\_\_ T 7 N R 5 E

TYPE MONUMENT P.K.WASHER  
 ON SURFACE - ~~BELOW~~ ON  
~~LEFT~~ - CL PAV'T - RIGHT 1.8'  
8.0' TO RT EDGE PAVEMENT  
 S.L.M. 390+68.54  
 Grid: Northing: 682066.6021 Easting: 1600484.3808



RECORD:  
 SET P.K.WASHER  
 6-16-97, SAH  
 SET P.K.WASHER  
 6-14-99 BWC  
 FD P.K.WASHER  
 REF45  
 1-15-16, JFO  
 SET MAG/WASHER  
 11-28-17, JMR



# O.D.O.T. DISTRICT 2 SURVEY OFFICE

PERSONNEL

REFERENCE NO. 45

SHEET 5 OF 7

NOTES Huss

H.C. Van Dusen

R.C. Moser

DATE 10-31-97

WEATHER pt clody

TEMP. +34°F

ROUTE SR-64

COUNTY Lucas

TOWNSHIP Swanton

SECTION 33

T 7 N R 5 2E

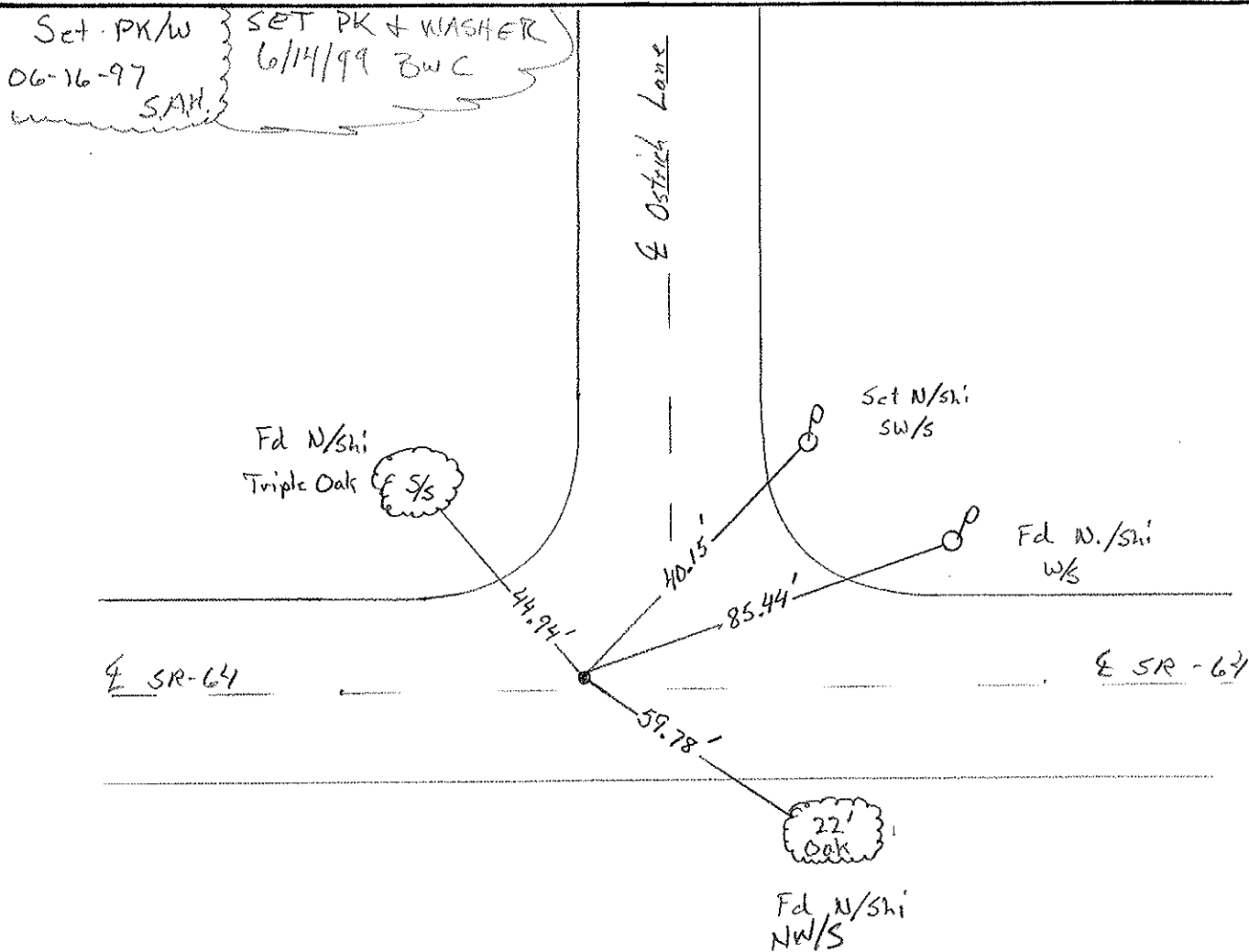
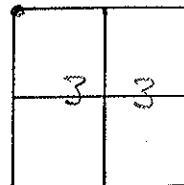
TYPE MONUMENT RR Spike

~~ON SURFACE~~ -BELOW .1

~~LEFT OF PAVT~~ -RIGHT 1.8 Rt

8.0 TO Rt. EDGE PAVEMENT

S.L.M. 391 + 79



O.D.O.T. DISTRICT 2 SURVEY OFFICE

PERSONNEL

REFERENCE NO. 45

SHEET 47 OF 49

NOTES LOEHRKE

H.C. CURTIS

R.C. RIPPLE

GEYMAN

DATE 7-26-91

WEATHER CLOUDY

TEMP. +80

ROUTE SR. 64

COUNTY LUCAS

TOWNSHIP SWANTON

SECTION 33

T 7 N R 5 E

TYPE MONUMENT R.R. Spike <sup>Exposed</sup>

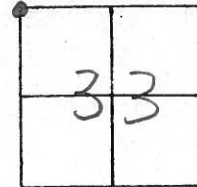
3-5-92

ON SURFACE - BELOW YES

~~LEFT~~ - C PAV'T. - RIGHT 1.4

B.2 TO RT EDGE PAVEMENT

S.L.M. 391+58



OSTRICH LANE

sh 5/s  
TRIPLE OAK



44.96

CONC. MON.  
HOLE IN Ctr

43.57-D

sh w/s



85.42

S.R. 64

C PAVT

59.79



sh w/s  
22" OAK

County LUCAS S.R. 64

Date 5-22-81

Township SWANTON

Weather CLEAR

Section 33

Temp. 80°

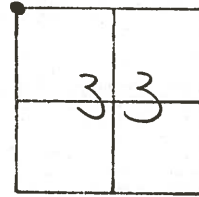
T7N, R5E

Personnel S. Hoffmann

C. Loehrke

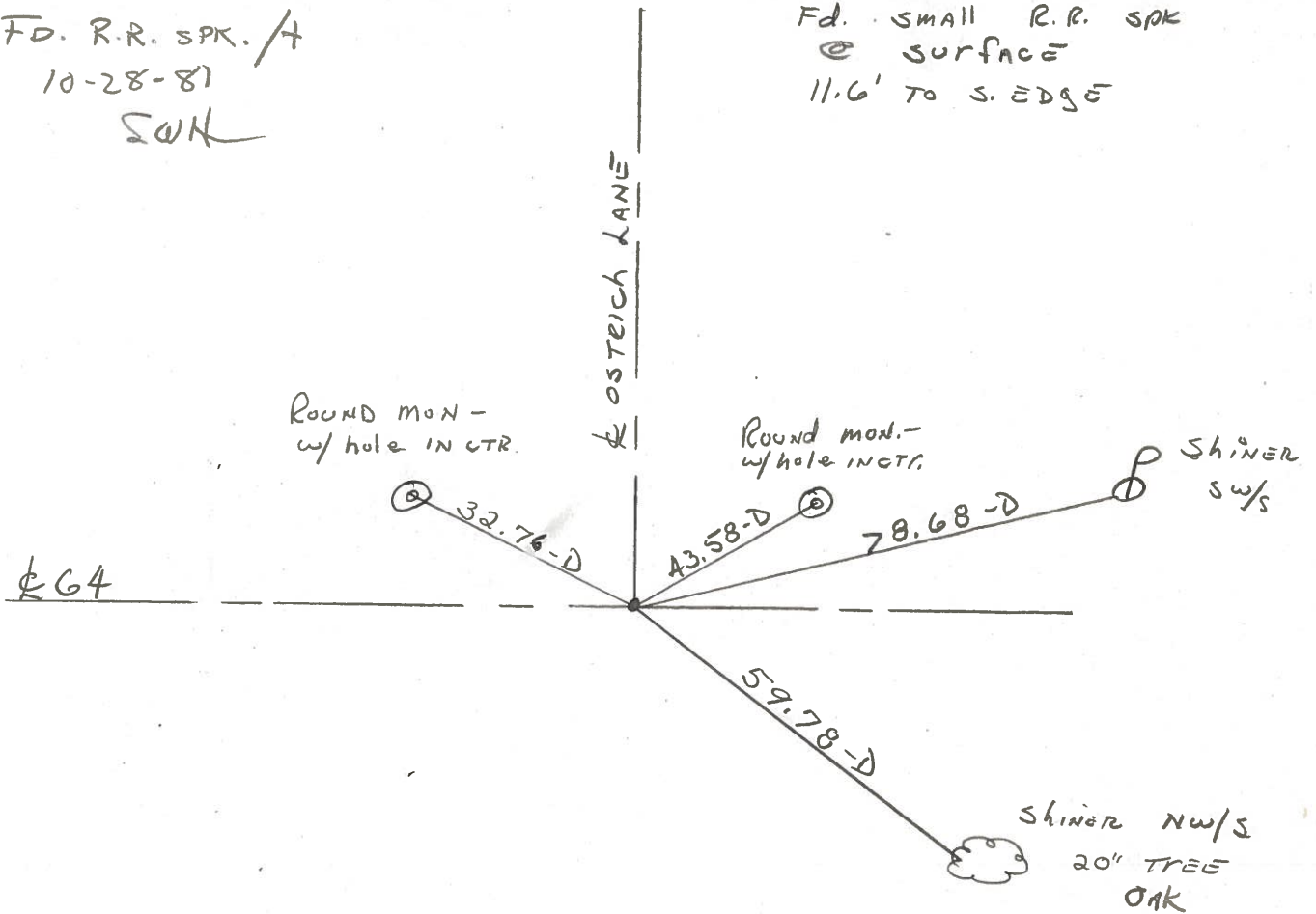
L. Householder

# 45



Fd. R.R. SPK. /  
 10-28-81  
 SWH

Fd. SMALL R.R. SPK  
 @ SURFACE  
 11.6' TO S. EDGE



PERSONNEL	TITLE	PERSONNEL	TITLE
Stone			
E			
Crew			

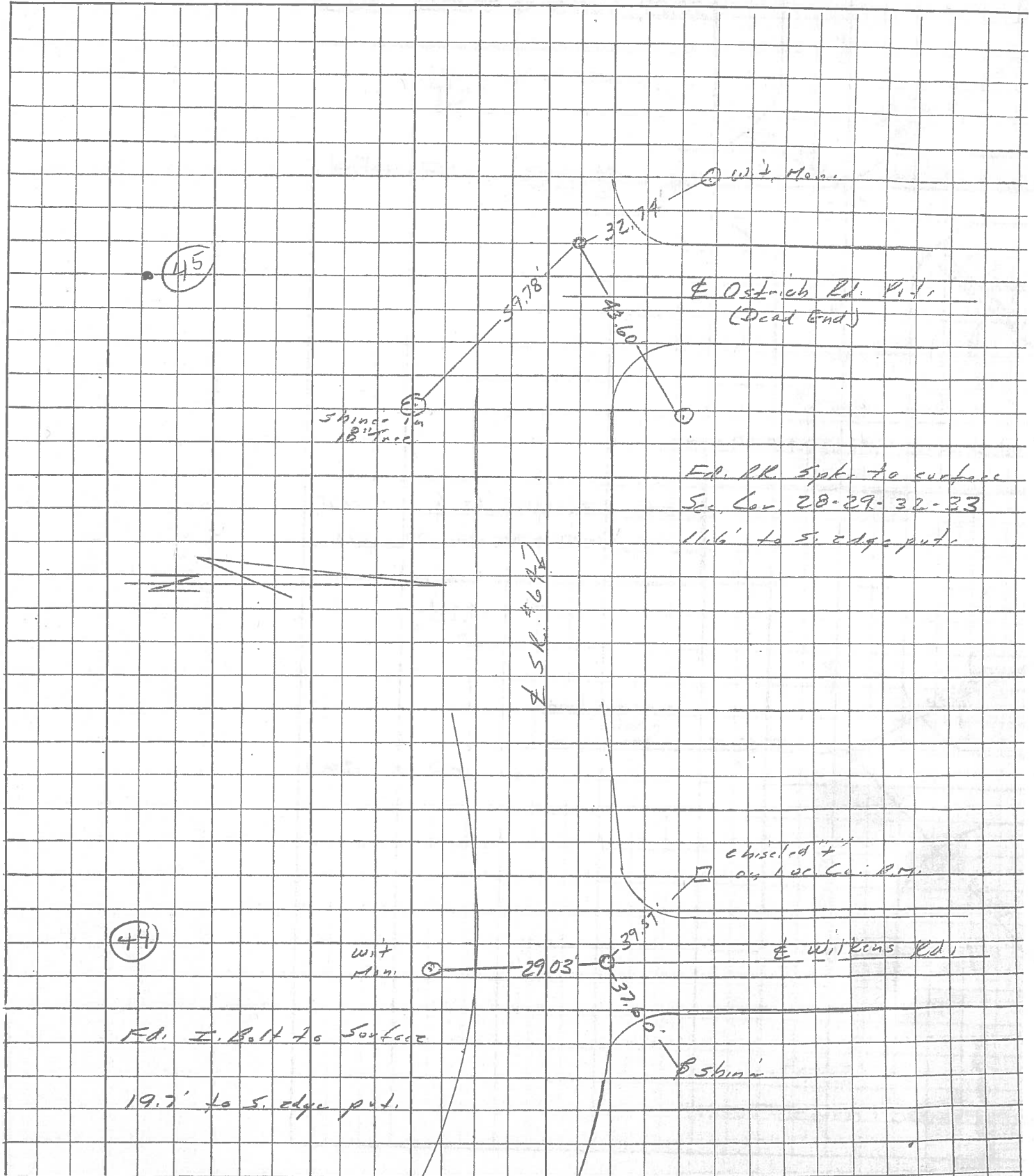
COUNTY Lucas DATE 13 April 77

S. R. 64 WEATHER Warm

SEC. 295 - West TEMP. 70°

DESCRIPTION *References to Contact Points* JOB NO.

LEFT CENTER LINE RIGHT





PERSONNEL TITLE PERSONNEL TITLE COUNTY Lucas DATE 3 Mar. 66  
 Stone Beck S. R. #64 WEATHER Mild  
 Brindley Schroder SEC. Whitehouse - w. TEMP. 60°  
 DESCRIPTION Rets. To Control Pts. JOB NO.

	LEFT	CENTER LINE	RIGHT
<b>44</b>			
#205	Int. Wilkens Rd. 4" L.H. Ed. Stone 2" Below Surface	29.11' 37.87' 39.58'	29.05' 31.81' 39.50'
			S. To Con. Ref. Mon. (D) N.E. To Con. Ref. Mon. (D) N.W. To "V" in Lu. Co. B.M. (D)
<b>45</b>			
#204	Int. Ostrich Rd. Ed. Brass Plate 1" Below Surface	43.64' 32.64'	
			N.E. To Con. Wrt. Mon. (D) N.W. To Con. Wrt. Mon. (D) <del>30.00' E. To Con. Wrt. Mon. (D)</del>
<b>46</b>			
#203	Int. Jeffers Rd. Ed. Brass Plate 1 1/2" Below Surface	38.15' 40.62' 48.20'	
			N.W. To "T" in Lu. Co. B.M. (D) N.E. To Con. Wrt. Mon. (D) S.W. To Con. Wrt. Mon. (D)
<b>47</b>			
#202	Int. Hamora Rd. Ed. Hole in Con. 2" Below Surface	34.76' 31.63' 36.47' 36.24'	
			N.W. To Con. Wrt. Mon. (D) N.E. To Con. Wrt. Mon. (D) S.W. To Con. Wrt. Mon. (D) S.E. To "T" in Lu. Co. B.M. (D)
<b>48</b>			
#201	N.E. & Sec. 30 & 31 Lat. Swanton Rd. N. Ed. R.R. Spk. To Surface	37.82' 38.77' 40.76'	
			S.W. To Con. Wrt. Mon. (D) S.E. To Con. Wrt. Mon. (D) N.W. To Hole in Lu. Co. B.M. (D)
<b>49</b>			
#200	E & W. & Sec. 30 Ed. R.R. Spk. To Surface	27.86' 40.26' 29.93' 71.54'	
			E. To Hole in Lu. Co. B.M. (D) N.E. To Con. Wrt. Mon. (D) W. To Con. Wrt. Mon. (D) N.W. To Shiner in P.S. (D)