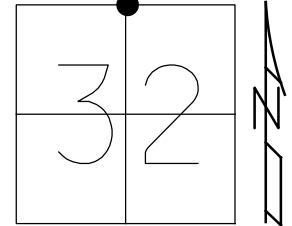


O.D.O.T. DISTRICT 2 SURVEY OFFICE (USE ONLY)

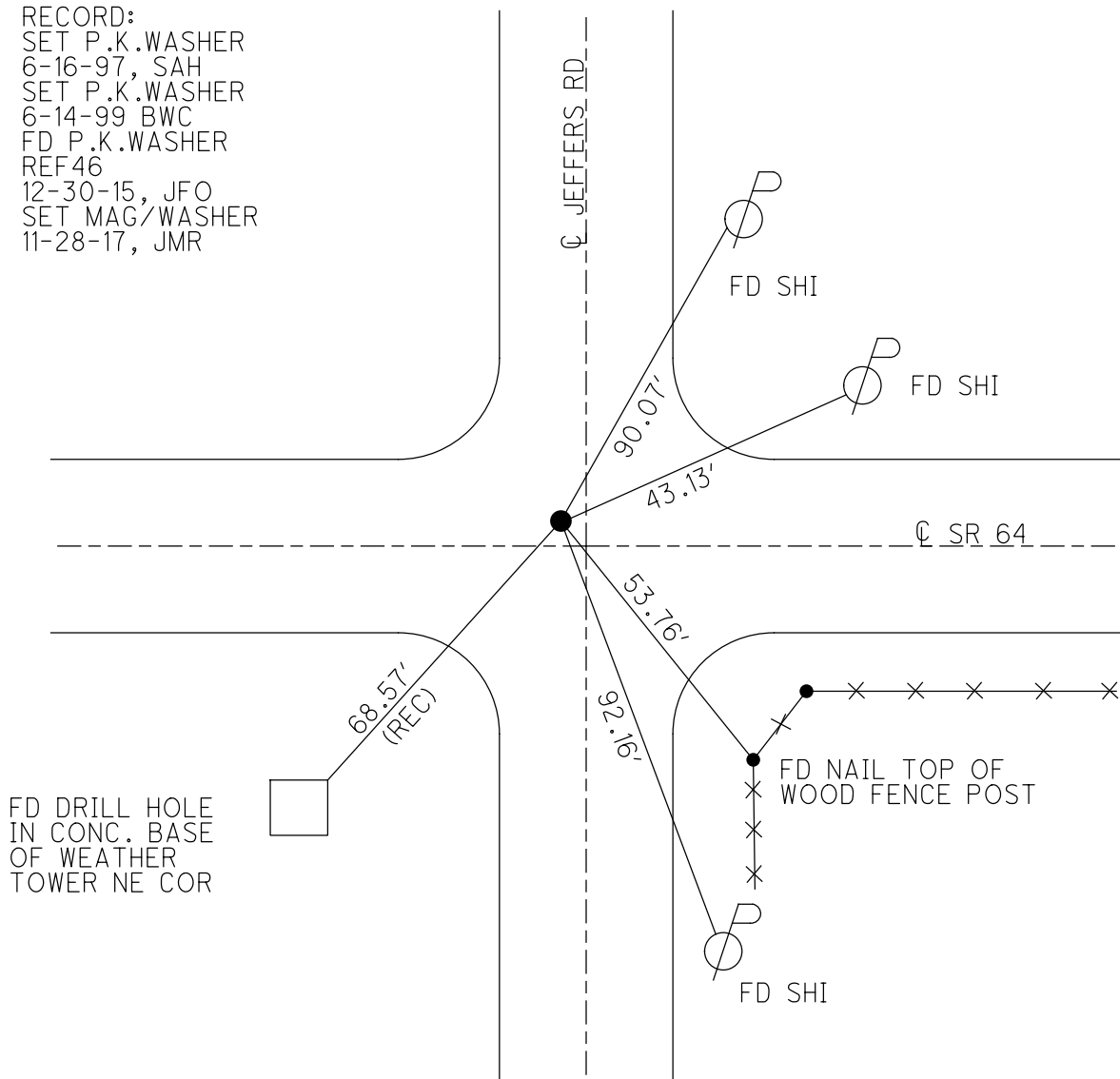
PERSONNEL	REFERENCE NO.	<u>46</u>	SHEET	<u>45</u>	OF	<u>50</u>
NOTES	RHOADES	DATE	<u>6-14-17</u>	ROUTE	<u>SR 64</u>	
H.C.	<u>POORE</u>	WEATHER	<u>PT CLOUDY</u>	COUNTY	<u>LUCAS</u>	
R.C.	<u>O'DONNELL</u>	TEMP.	<u>72°</u>	TOWNSHIP	<u>WATERVILLE</u>	
				SECTION	<u>32</u>	
				T	<u>7</u>	N
				R	<u>5</u>	E

TYPE MONUMENT P.K.WASHER
 ON SURFACE - ~~BELOW~~ ON
~~LEFT -~~ CL PAV'T - RIGHT 0.7'
TO EDGE PAVEMENT
 S.L.M. 417+12.00

Grid: Northing: 682089.5521 Easting: 1597841.0228



RECORD:
 SET P.K.WASHER
 6-16-97, SAH
 SET P.K.WASHER
 6-14-99 BWC
 FD P.K.WASHER
 REF46
 12-30-15, JFO
 SET MAG/WASHER
 11-28-17, JMR



O.D.O.T. DISTRICT 2 SURVEY OFFICE

PERSONNEL _____

REFERENCE NO. 46

SHEET 6 OF 7

NOTES Huss

H.C. VanDusen

R.C. Moser

DATE 10-31-96

WEATHER pt cldy

TEMP. +34° F

ROUTE SR-64

COUNTY Lucas

TOWNSHIP Swanton

SECTION 32

T 7 N R 5 E

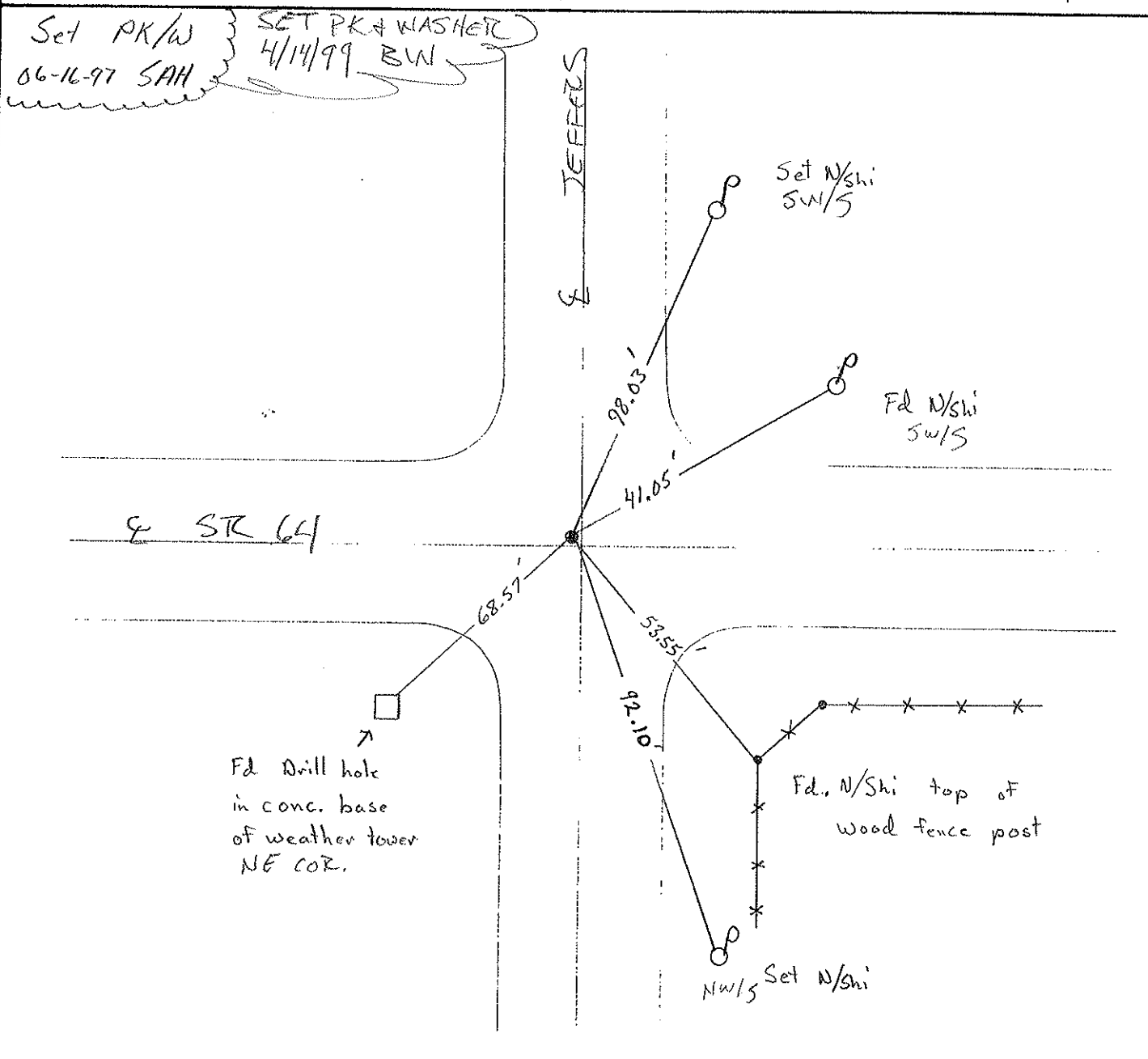
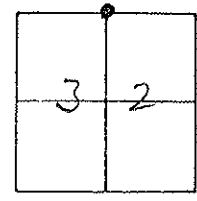
TYPE MONUMENT RR Spike

ON SURFACE - ~~BELONG~~

~~NEAR TO PAVEMENT~~ - RIGHT 0.7' RT

TO EDGE PAVEMENT

S.L.M. 418+36



O.D.O.T. DISTRICT 2 SURVEY OFFICE

PERSONNEL _____

REFERENCE NO. 46

SHEET 48 OF 49

NOTES LOEHRKE

H.C. Ripole

DATE 8-2-91

ROUTE S.R. 64

R.G. GEYMAN

WEATHER CLEAR

COUNTY LUCAS

TEMP. +85

TOWNSHIP SWANTON

SECTION 32

T 7 N R 5 E

TYPE MONUMENT R.R. Spike

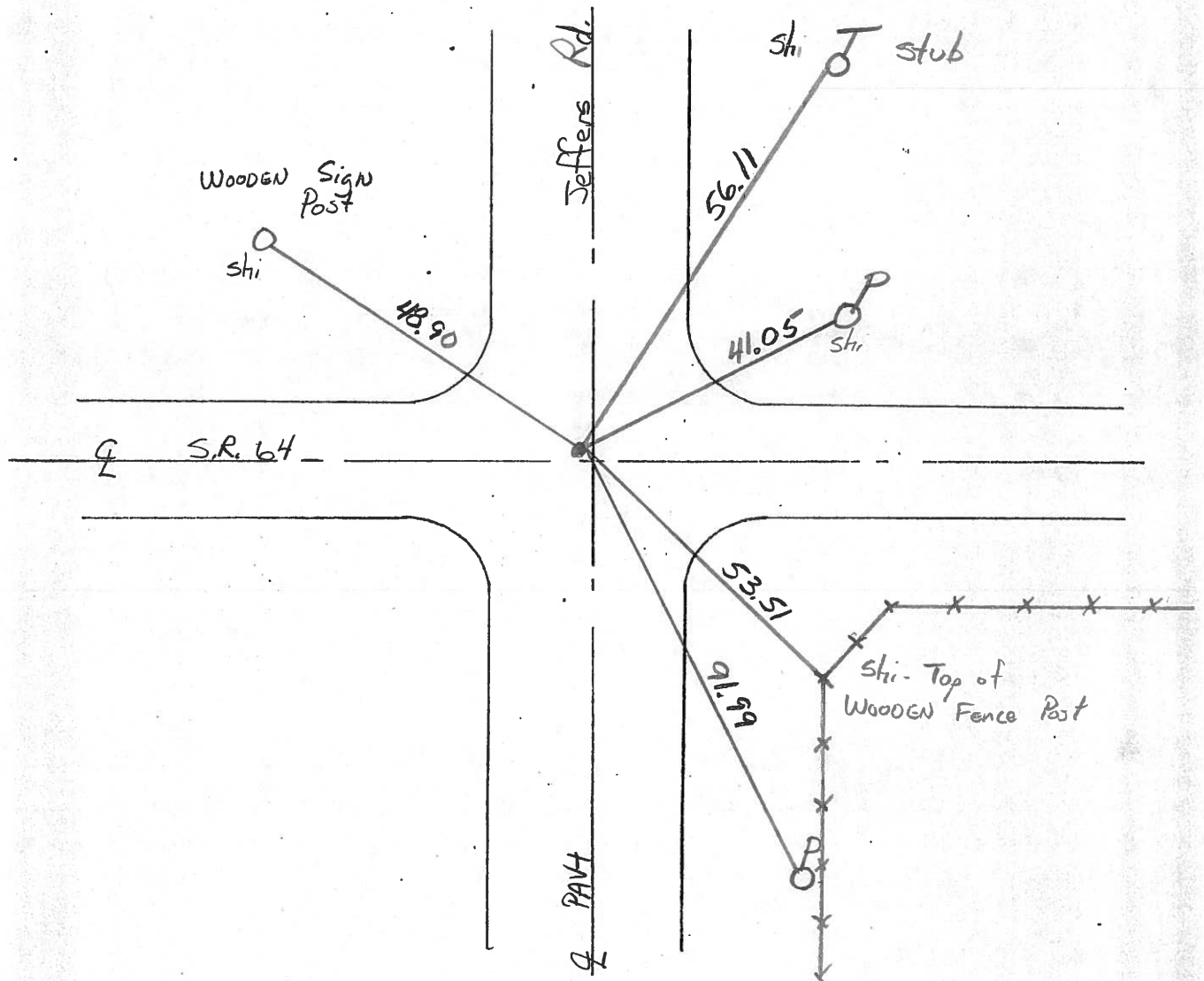
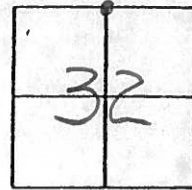
Exposed
3-5-92

ON SURFACE - BELOW Yes

~~LEFT~~ - Q PAV'T. - RIGHT 0.7'

TO EDGE PAVEMENT

S.L.M. 418+00



County LUCAS S.R. 64

Township SWANTON

Section 32

T7N, R5E

Personnel S. Hoffmann

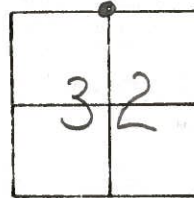
C. Lochrke

J. Householder

Date 5-22-81

Weather Clear

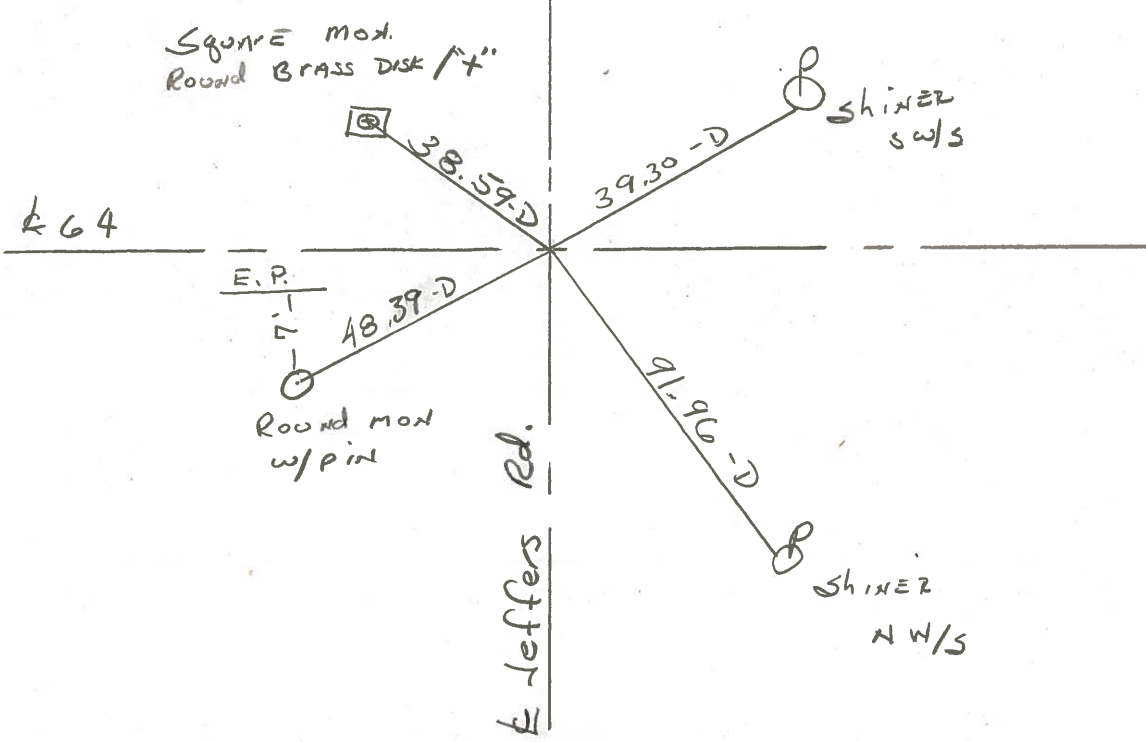
Temp. 80°



#46

FD. R.R. SPK. / T
10-28-81 SWH

Fd. small RR spk @ surface
CTR. of OUT.



64

E.P.

Round mon
w/pint

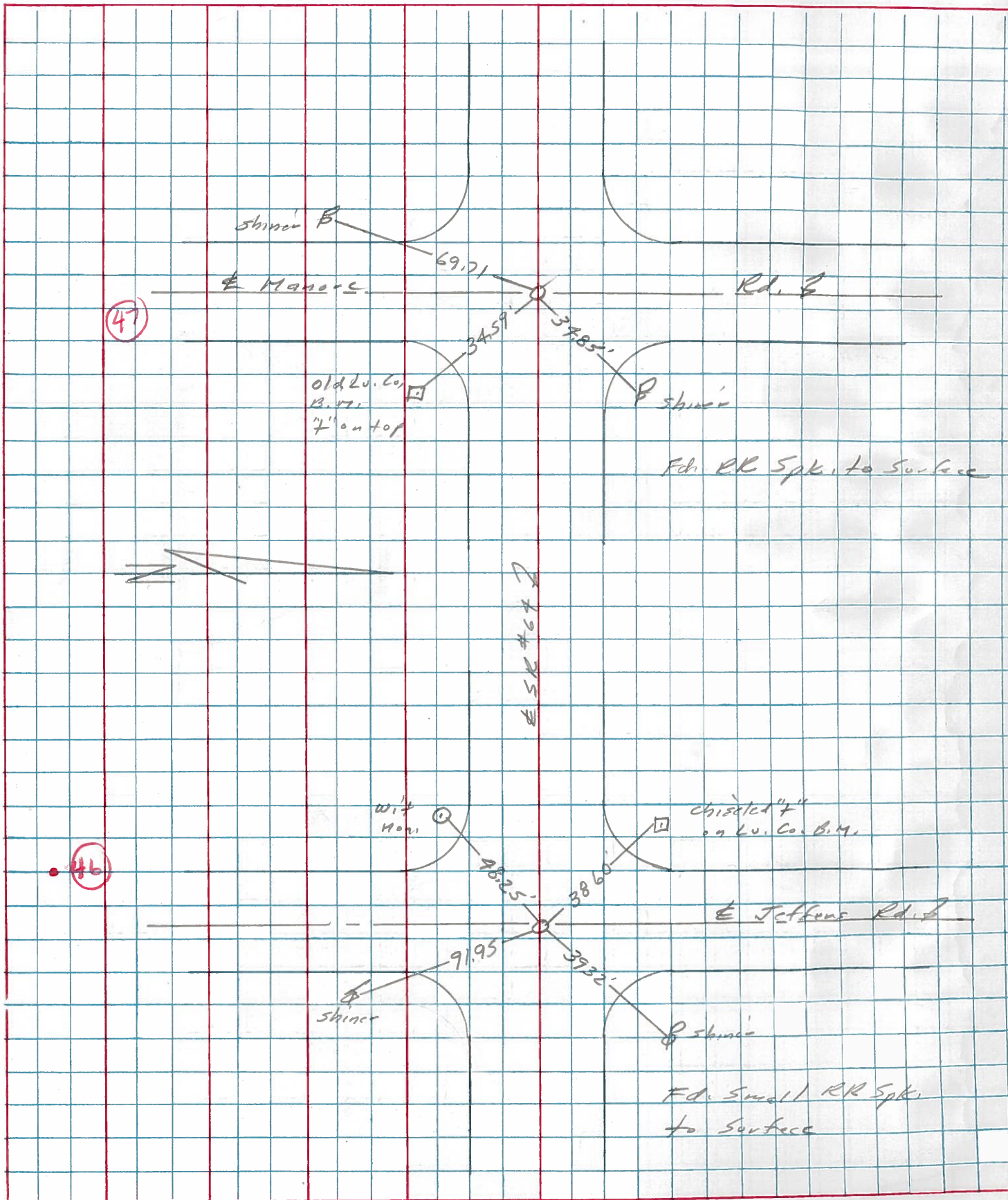
Leffers Rd.

Shiner
sw/s

Shiner
NW/S

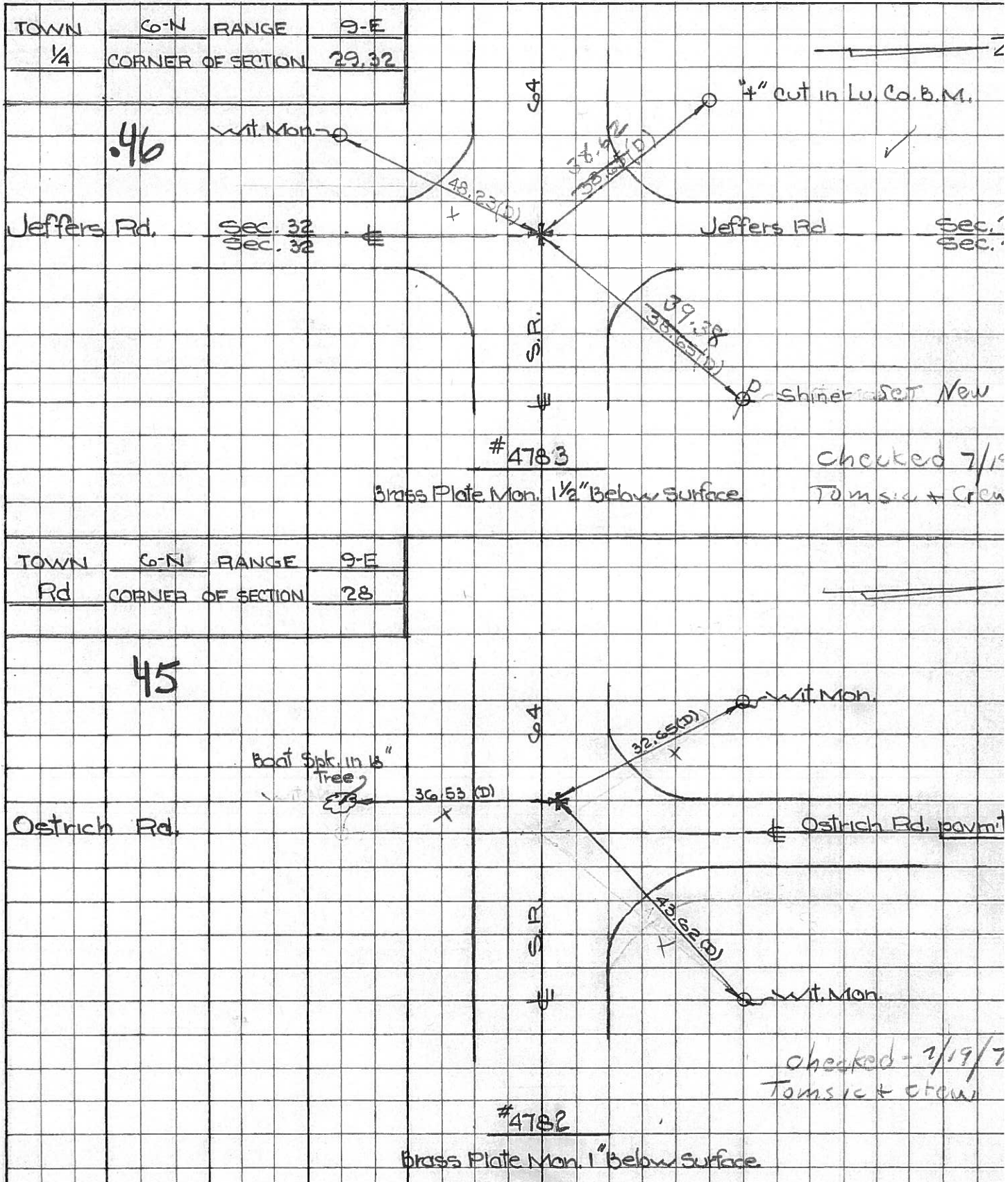
PERSONNEL	TITLE	PERSONNEL	TITLE	COUNTY	DATE	WEATHER	TEMP.
Stone				Lucas	13 April 77	Warm	78°
E				S. R. 64			
Crow				SEC. Jeffers Rd - West			

DESCRIPTION References to Control Points JOB NO. _____



PERSONNEL TITLE PERSONNEL TITLE COUNTY Lucas DATE Aug. 2, 1964
 W. Denno _____
 D. Curtis _____ S. R. 64 WEATHER mild
 J. Teal _____
 J. Brindley _____ SEC. _____ TEMP. 80° ±

DESCRIPTION S.R. 64 - Ref. Mon. & Control Points JOB NO. 029940



PERSONNEL _____ TITLE _____ PERSONNEL _____ TITLE _____
 COUNTY Lucas DATE 3 Mar. 66
 S. R. #64 WEATHER Mild
 SEC. Whitehouse - W. TEMP. 60°
 DESCRIPTION Rets. To Control Pts. JOB NO. _____

	LEFT	CENTER LINE	RIGHT
44			
#205	Int. Wilkens Rd. 4" L.H. Ed. Stone 2" Below Surface	29.11' 37.87' 39.58'	29.05' 31.81' 39.50'
			S. To Con. Ref. Mon. (D) N.E. To Con. Ref. Mon. (D) N.W. To "V" in Lu. Co. B.M. (D)
45			
#204	Int. Ostrich Rd. Ed. Brass Plate 1" Below Surface	43.64' 32.64'	
			N.E. To Con. Wrt. Mon. (D) N.W. To Con. Wrt. Mon. (D) S. To Con. Wrt. Mon. (D)
46			
#203	Int. Jeffers Rd. Ed. Brass Plate 1 1/2" Below Surface	38.15' 40.62' 48.20'	
			N.W. To "T" in Lu. Co. B.M. (D) N.E. To Con. Wrt. Mon. (D) S.W. To Con. Wrt. Mon. (D)
47			
#202	Int. Hamora Rd. Ed. Hole in Con. 2" Below Surface	34.76' 31.63' 36.47' 36.24'	
			N.W. To Con. Wrt. Mon. (D) N.E. To Con. Wrt. Mon. (D) S.W. To Con. Wrt. Mon. (D) S.E. To "T" in Lu. Co. B.M. (D)
48			
#201	N.E. & Sec. 30 & 31 Int. Swanton Rd. N. Ed. R.R. Spk. To Surface	37.82' 38.77' 40.76'	
			S.W. To Con. Wrt. Mon. (D) S.E. To Con. Wrt. Mon. (D) N.W. To Hole in Lu. Co. B.M. (D)
49			
#200	E.F.W. & Sec. 30 Ed. R.R. Spk. To Surface	27.86' 40.26' 29.93' 71.54'	
			E. To Hole in Lu. Co. B.M. (D) N.E. To Con. Wrt. Mon. (D) W. To Con. Wrt. Mon. (D) N.W. To Shiner in P.S. (D)