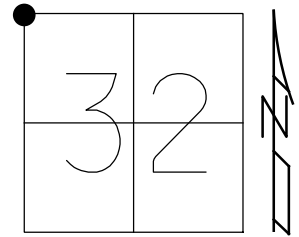


O.D.O.T. DISTRICT 2 SURVEY OFFICE (USE ONLY)

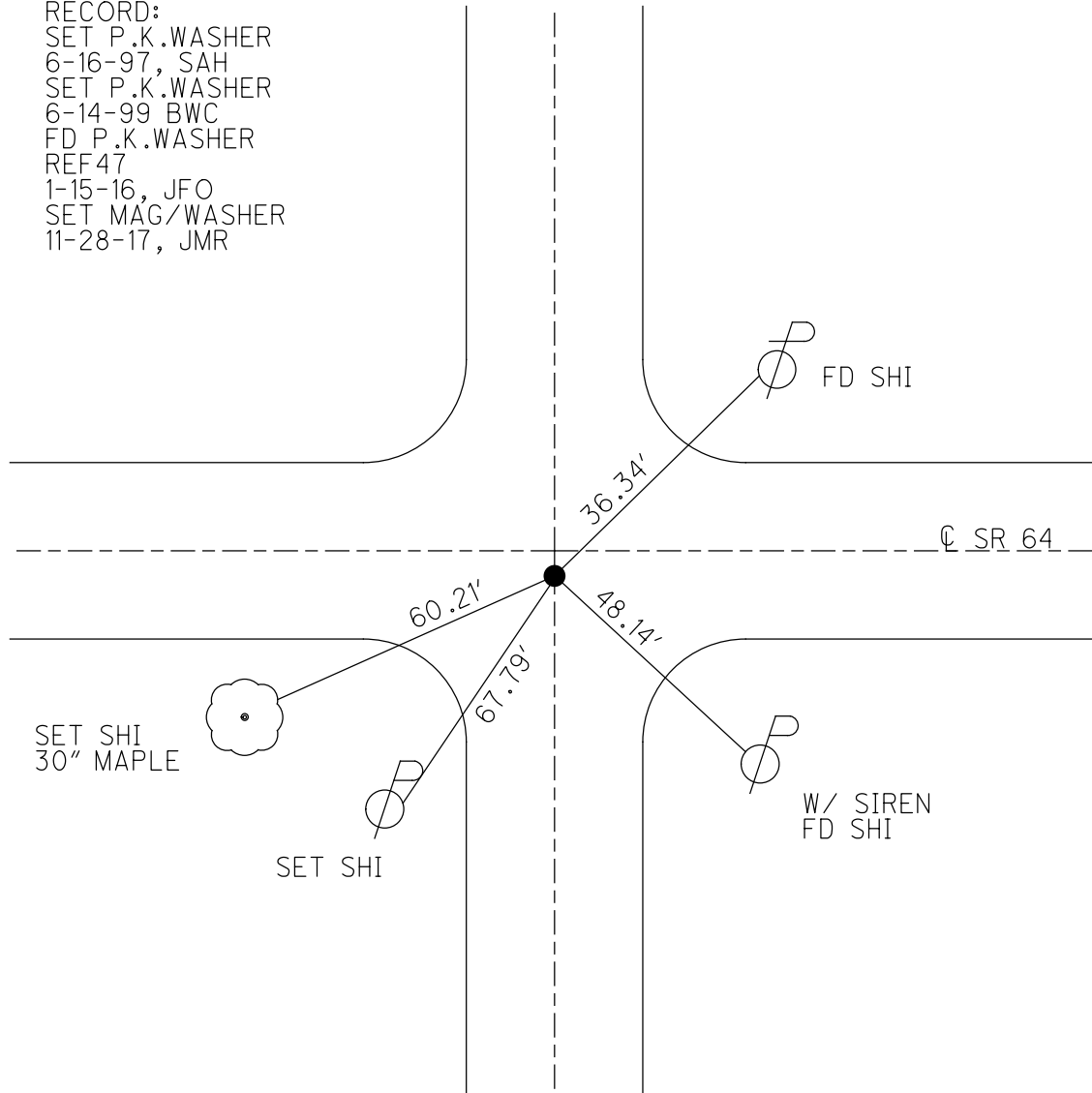
PERSONNEL \_\_\_\_\_ REFERENCE NO. 47 SHEET 46 OF 50  
 NOTES RHOADES DATE 6-14-17 ROUTE SR 64  
 H.C. O'DONNELL WEATHER CLOUDY COUNTY LUCAS  
 R.C. POORE TEMP. 72° TOWNSHIP WATERVILLE  
 \_\_\_\_\_ SECTION 32  
 \_\_\_\_\_ T 7 N R 5 E

TYPE MONUMENT P.K.WASHER  
 ON SURFACE - ~~BELOW~~ ON \_\_\_\_\_  
 LEFT - ☉ PAV'T - ~~RIGHT~~ 1.6'  
 \_\_\_\_\_ TO \_\_\_\_\_ EDGE PAVEMENT  
 S.L.M. 443+53.39



Grid: Northing: 682110.5123 Easting: 1595199.7119

RECORD:  
 SET P.K.WASHER  
 6-16-97, SAH  
 SET P.K.WASHER  
 6-14-99 BWC  
 FD P.K.WASHER  
 REF47  
 1-15-16, JFO  
 SET MAG/WASHER  
 11-28-17, JMR



# O.D.O.T. DISTRICT 2 SURVEY OFFICE

PERSONNEL \_\_\_\_\_

REFERENCE NO. 47

SHEET 7 OF 7

NOTES Huss

H.C. Van Dusen

R.C. Moser

DATE 10-31-96

WEATHER Pt Cldy

TEMP. +34°F

ROUTE SR-64

COUNTY Lucas

TOWNSHIP Swanton

SECTION 32

T 7 N R 5 E

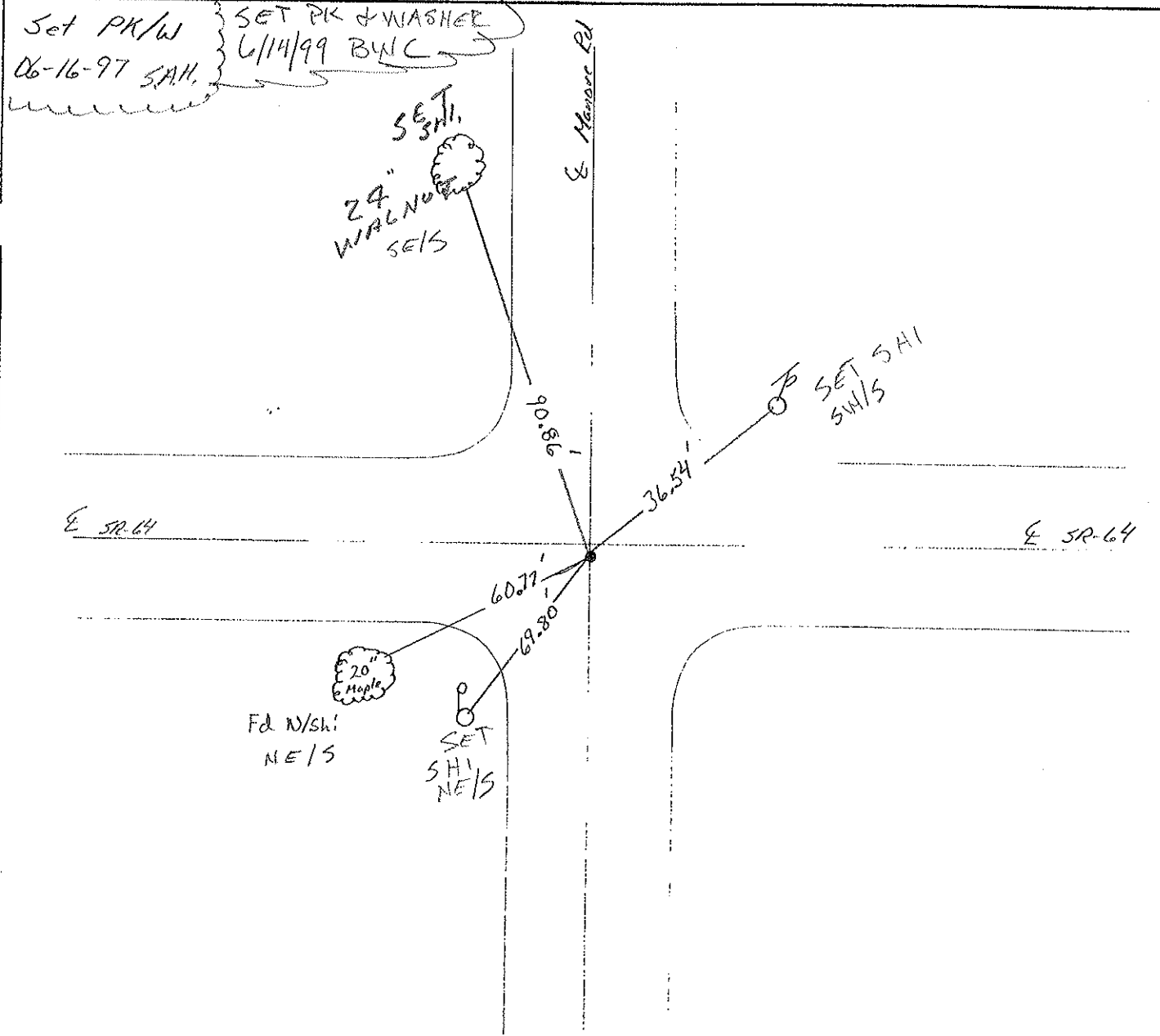
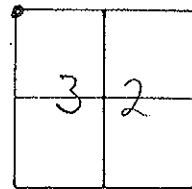
TYPE MONUMENT R.R. Spike

ON SURFACE - BELOW

LEFT - 0.00' RIGHT - 1.6' Lt.

TO EDGE PAVEMENT

S.L.M. 444 + 53



O.D.O.T. DISTRICT 2 SURVEY OFFICE

PERSONNEL \_\_\_\_\_

REFERENCE NO. 47

SHEET 49 OF 49

NOTES LOEHRKE

H.C. RIPPLE

DATE B-2-91

ROUTE SR 64

R.C. BEYMAN

WEATHER Clear

COUNTY LUCAS

TEMP. +85

TOWNSHIP SWANTON

SECTION 32

T7 N R 5 E

TYPE MONUMENT RR. SPIKE.

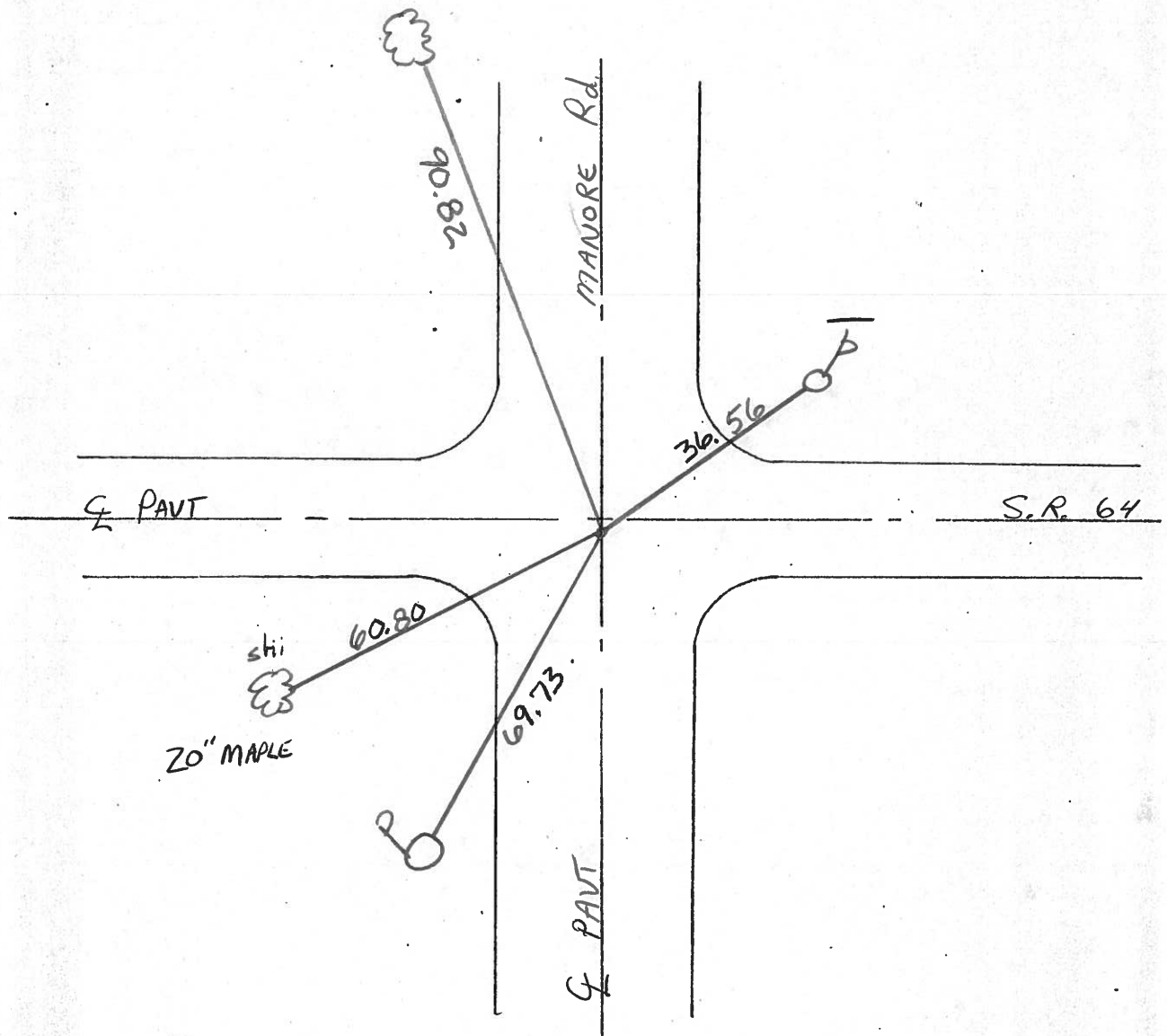
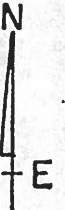
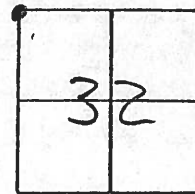
Exposed  
3-5-92

ON SURFACE - ~~BELOW~~ YES

LEFT - ~~C~~ PAV'T. - RIGHT 1.3'

TO EDGE PAVEMENT

S.L.M. 444+43



County LUCAS S.R. 64

Date 5-22-81

Township SWANTON

Weather clear

Section 32

Temp. 80°

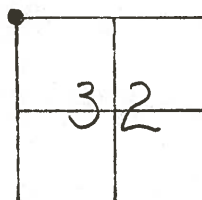
T7N, R5E

Personnel J. Hoffman

C. Loehrke

J. Householder

#47



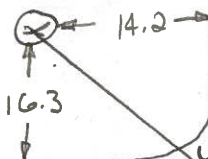
Fd. R.R. SPK. / 4

10-28-81

SWH

Fd R.R. SPK @ SURFACE  
w/ "X" CUT

OLD MON-BROKEN  
CUT "X" ON TOP



FD SHINER SW/S

35.00-D

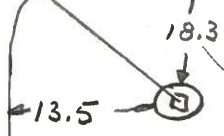
34.84-D

64

34.56-D

69.72-D

MANORE Rd.



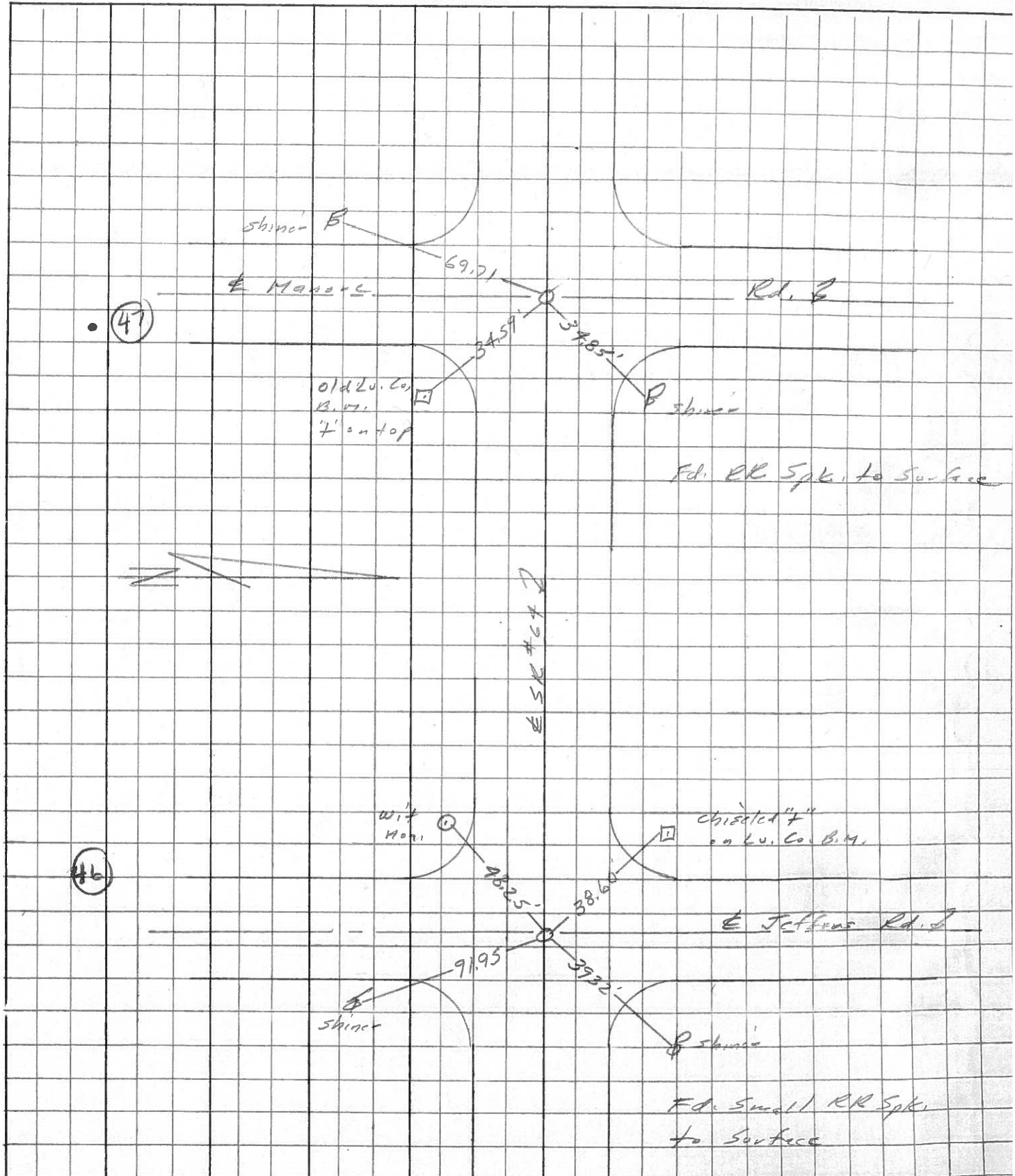
OLD MON-BROKEN  
SQUARE ROD TOP CTR.

GONE

SHINER NE/S

PERSONNEL	TITLE	PERSONNEL	TITLE	COUNTY	DATE	WEATHER	TEMP.
Stone				Lucas	13 April 7	Warm	78°
E				S. R. 64			
Crew				SEC. Jeffers Rd - West			

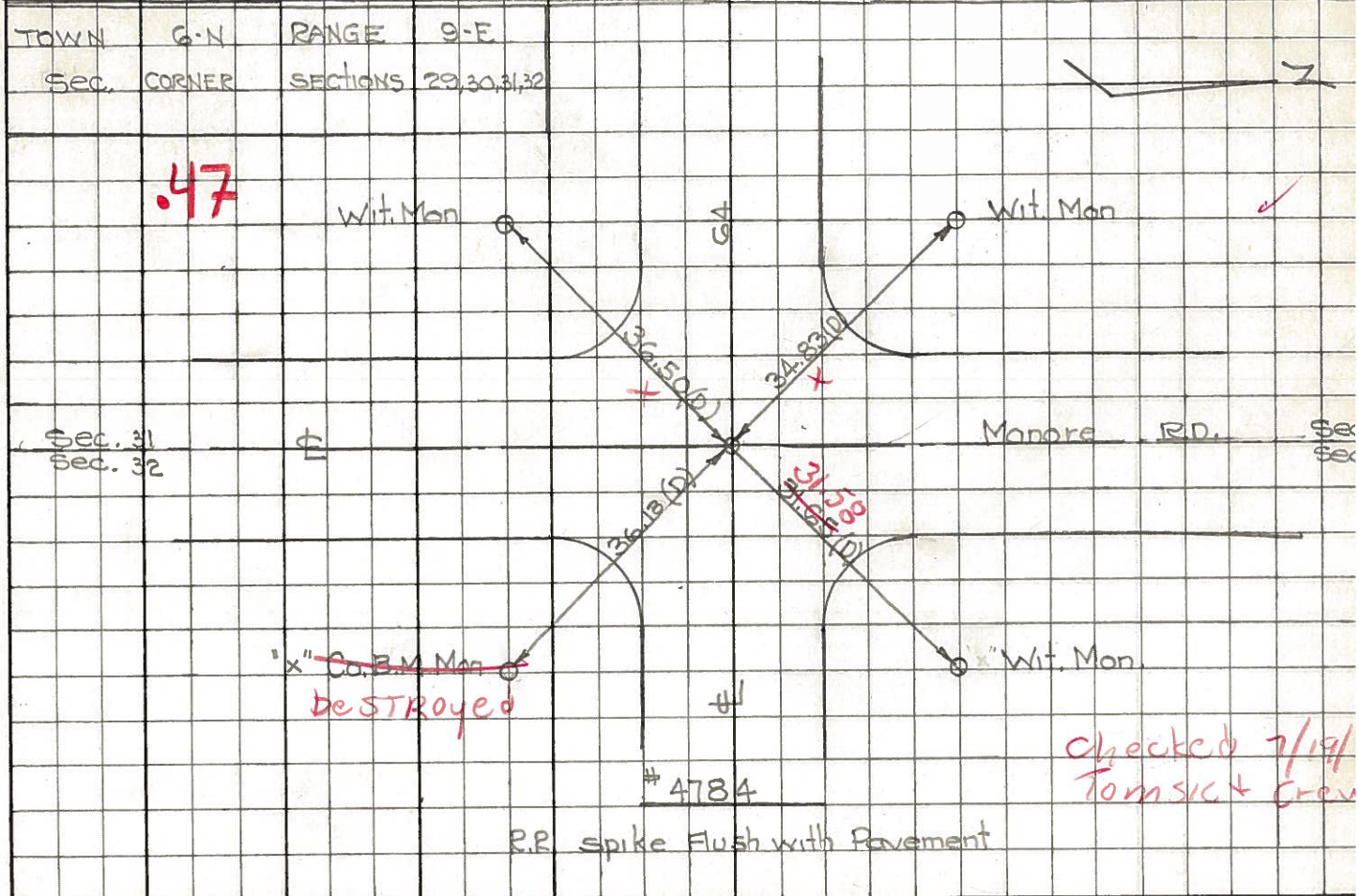
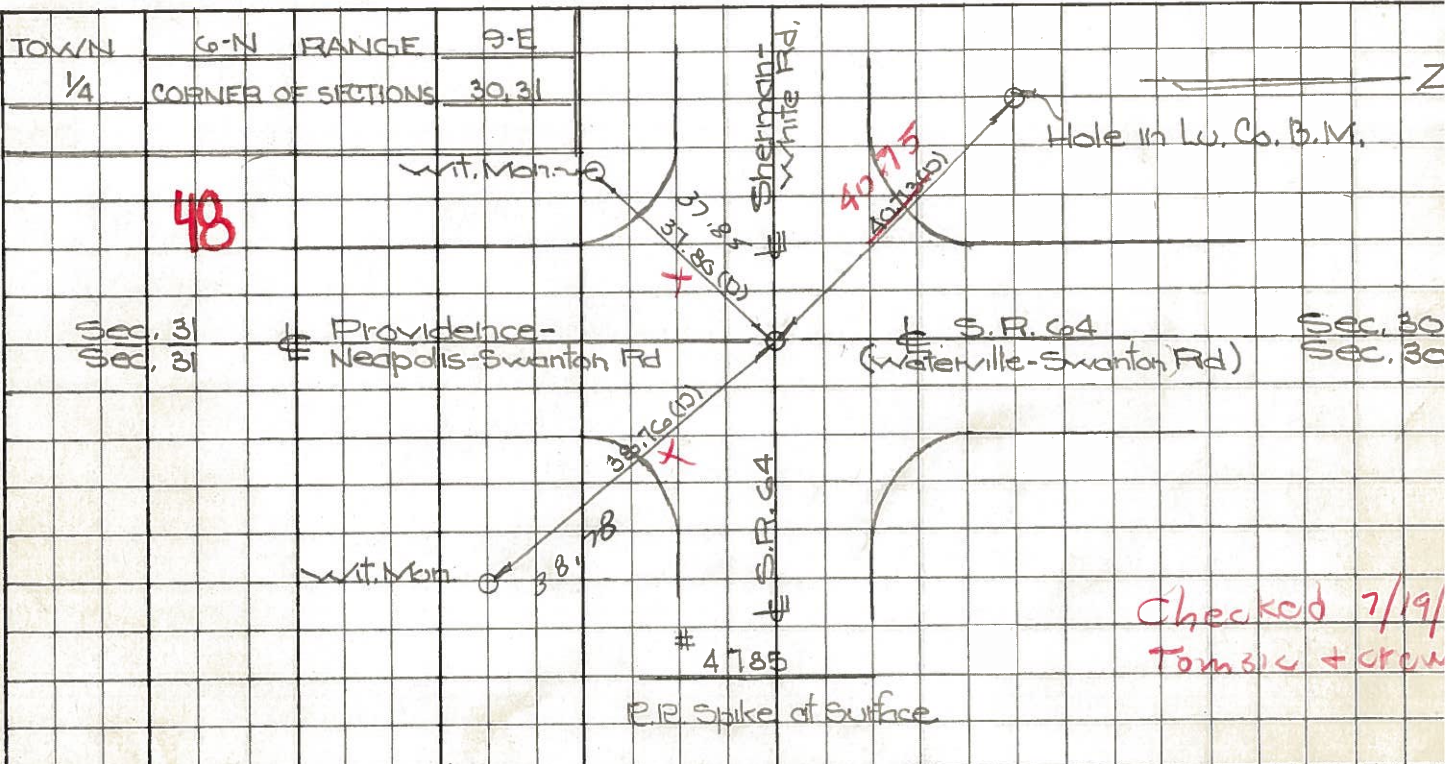
DESCRIPTION: References to Control Points      JOB NO. \_\_\_\_\_



PERSONNEL TITLE PERSONNEL TITLE  
 W. Denno \_\_\_\_\_  
 J. Teal \_\_\_\_\_  
 C. Brindley \_\_\_\_\_

COUNTY Lucas DATE Aug 16, 1966  
 S. R. 64 WEATHER Mild  
 SEC. \_\_\_\_\_ TEMP. 80°

DESCRIPTION S.R. 64 - Ref. Mon. & Control Points JOB NO. 02994(0)



PERSONNEL TITLE PERSONNEL TITLE COUNTY Lucas DATE 3 Mar. 66  
 Stone Beck S. R. #64 WEATHER Mild  
 Brindley Schroder SEC. Whitehouse - w. TEMP. 60°  
 DESCRIPTION Rets. To Control Pts. JOB NO.

	LEFT	CENTER LINE	RIGHT	
<b>44</b>				
#205	Int. Wilkens Rd. 4" L.H. Ed. Stone 2" Below Surface	29.11' 37.87' 39.58'	29.05' 31.81' 39.50'	S. To Con. Ref. Mon. (D) N.E. To Con. Ref. Mon. (D) N.W. To "V" in Lu. Co. B.M. (D)
<b>45</b>				
#204	Int. Ostrich Rd. Ed. Brass Plate 1" Below Surface	43.64' 32.64'		N.E. To Con. Wrt. Mon. (D) N.W. To Con. Wrt. Mon. (D) <del>30.00' E. To Con. Wrt. Mon. (D)</del>
<b>46</b>				
#203	Int. Jeffers Rd. Ed. Brass Plate 1 1/2" Below Surface	38.65' 40.62' 48.20'		N.W. To "T" in Lu. Co. B.M. (D) N.E. To Con. Wrt. Mon. (D) S.W. To Con. Wrt. Mon. (D)
<b>47</b>				
#202	Int. Hamora Rd. Ed. Hole in Con. 2" Below Surface	34.76' 31.63' 36.47' 36.24'		N.W. To Con. Wrt. Mon. (D) N.E. To Con. Wrt. Mon. (D) S.W. To Con. Wrt. Mon. (D) S.E. To "T" in Lu. Co. B.M. (D)
<b>48</b>				
#201	N.E. & Sec. 30 & 31 Lat. Swanton Rd. N. Ed. R.R. Spk. To Surface	37.82' 38.77' 40.76'		S.W. To Con. Wrt. Mon. (D) S.E. To Con. Wrt. Mon. (D) N.W. To Hole in Lu. Co. B.M. (D)
<b>49</b>				
#200	E.F.W. & Sec. 30 Ed. R.R. Spk. To Surface	27.86' 40.26' 29.93' 71.54'		E. To Hole in Lu. Co. B.M. (D) N.E. To Con. Wrt. Mon. (D) W. To Con. Wrt. Mon. (D) N.W. To Shire in P.S. (D)