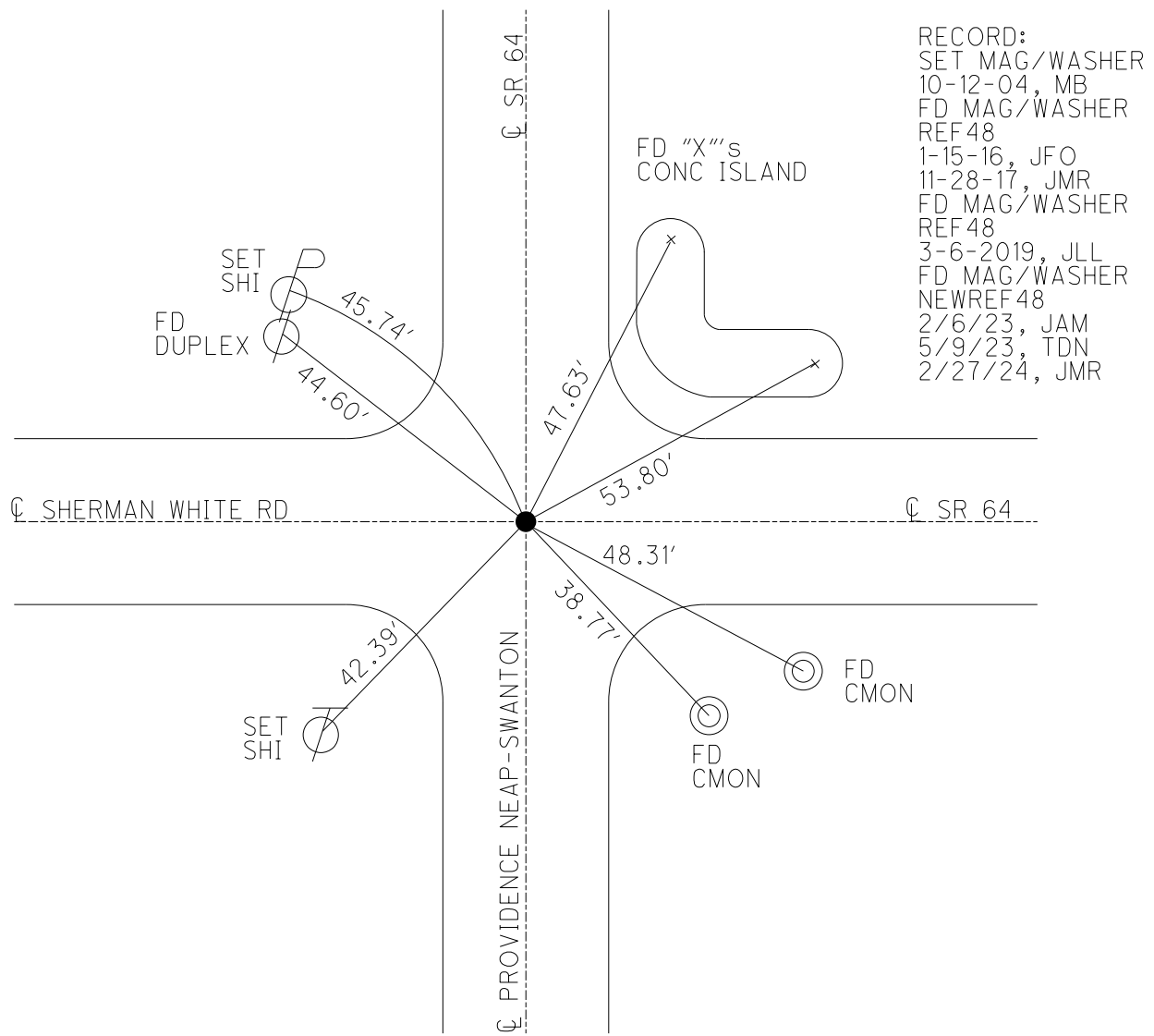
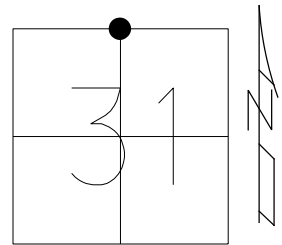


O.D.O.T. DISTRICT 2 SURVEY OFFICE (USE ONLY)

PERSONNEL _____ REFERENCE NO. 48 SHEET 47 OF 56
 NOTES NIESE DATE 5/9/23 ROUTE SR 64
 H.C. AUBLE WEATHER SUNNY COUNTY LUCAS
 R.C. ASTON TEMP. 56° TOWNSHIP SWANTON
 DWG BY RHOADES PID PAVING TRAIN SECTION 31
 T 7 N R 5 E

TYPE MONUMENT MAG/WASHER
 ON SURFACE - ~~BELOW~~ ON
 OFFSET \odot PAVEMENT ON _____ LT : RT
 _____ TO _____ EDGE PAVEMENT
 STATION: 470+33.36

HORIZ.DATUM: NAD83 (2011) GEOID: NAVD88 2018
 GRID: NORTHING: 682122.953 EASTING: 1592519.793



O.D.O.T. DISTRICT 2 SURVEY OFFICE (USE ONLY)

PERSONNEL

REFERENCE NO. 48

SHEET 47 OF 56

NOTES RHOADES

DATE 6/14/17

ROUTE SR 64

H.C. O'DONNELL

WEATHER CLOUDY

COUNTY LUCAS

R.C. POORE

TEMP. 72°

TOWNSHIP WATERVILLE

SECTION 31

DWG BY GARRETT PID 107059

T 7 N R 5 E

TYPE MONUMENT MAG/WASHER

ON SURFACE - ~~BELOW~~ ON

OFFSET \odot PAVEMENT ON LT : RT

- TO - EDGE PAVEMENT

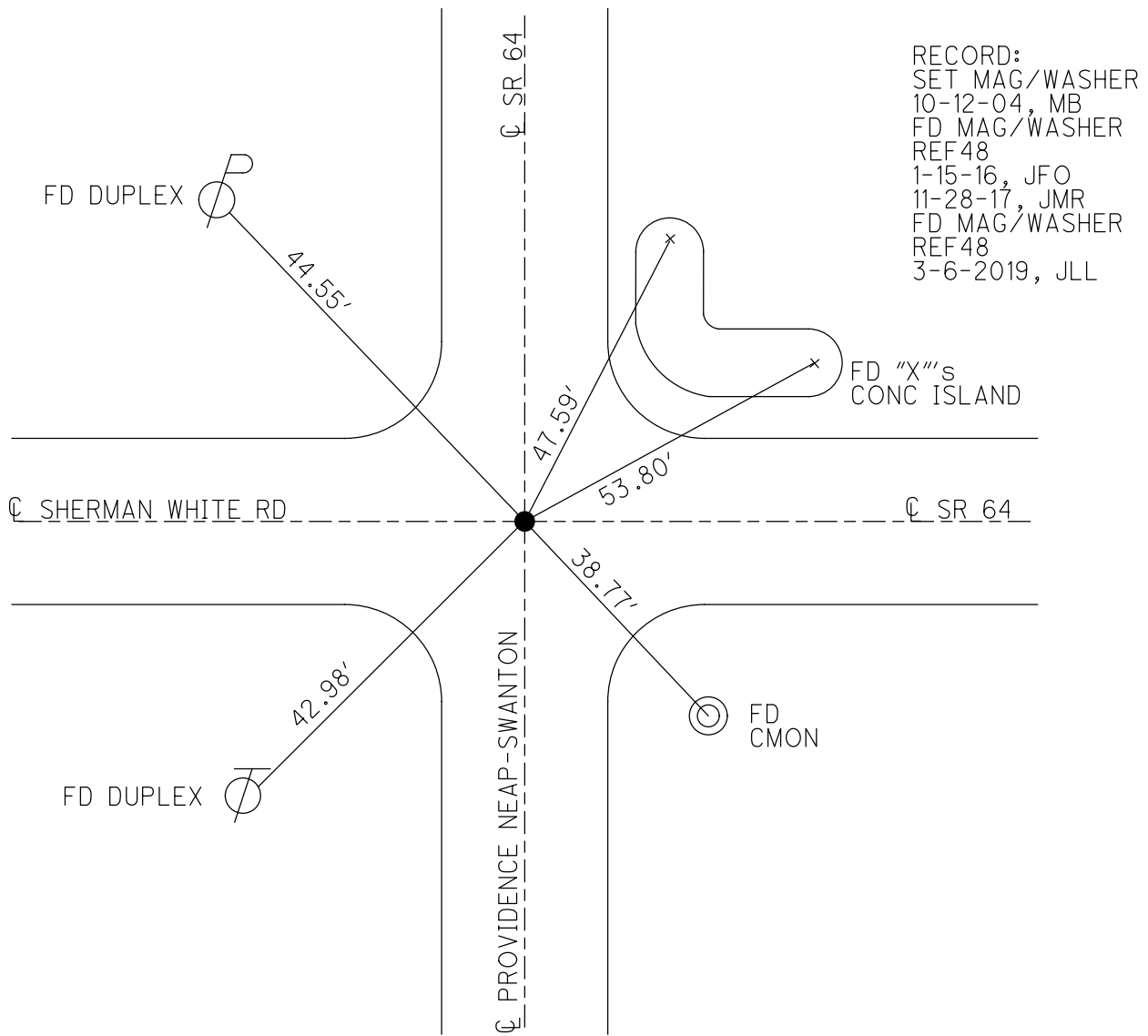
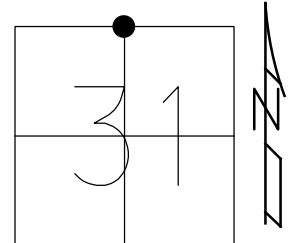
STATION: 470+33.36

HORZ.DATUM: NAD83 (2011)

GEOID: 2012A

GRID: NORTHING: 682122.953

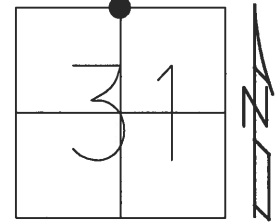
EASTING: 1592519.793



O.D.O.T. DISTRICT 2 SURVEY OFFICE (USE ONLY)

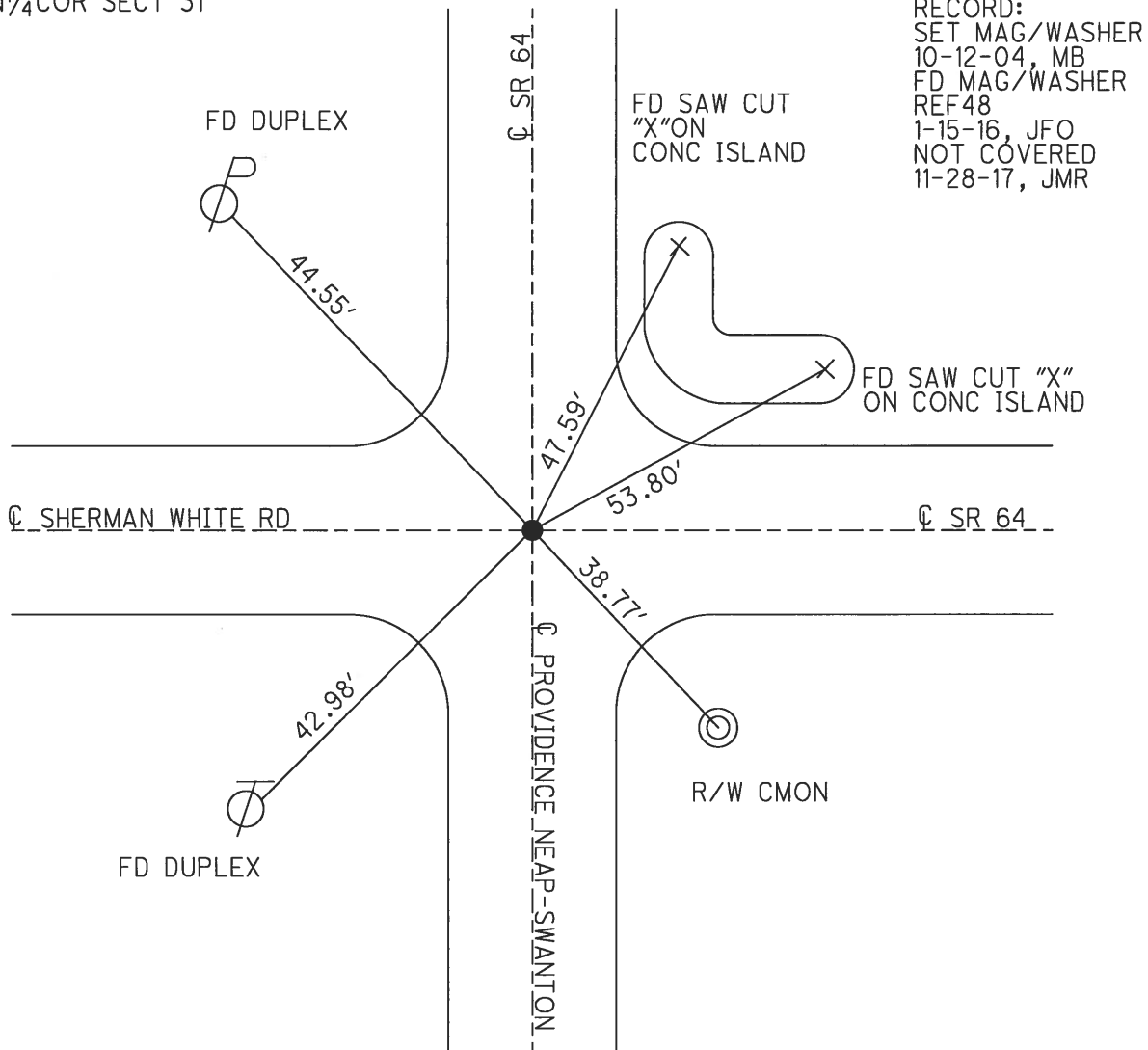
PERSONNEL _____ REFERENCE NO. 48 SHEET 47 OF 50
 NOTES RHOADES DATE 6-14-17 ROUTE SR 64
 H.C. O'DONNELL WEATHER CLOUDY COUNTY LUCAS
 R.C. POORE TEMP. 72° TOWNSHIP WATERVILLE
 _____ SECTION 31
 _____ T 7 N R 5 E

TYPE MONUMENT MAG/ WASHER
 ON SURFACE - ~~BELOW~~ ON
~~LEFT - C PAV'T - RIGHT~~ ON
 _____ TO _____ EDGE PAVEMENT
 S.L.M. 470+33.36



Grid: Northing: 682123.0332 Easting: 1592519.7723

N¹/₄COR SECT 31



O.D.O.T. DISTRICT 2 SURVEY OFFICE

PERSONNEL

REFERENCE NO. 48

SHEET 1 OF 10

NOTES HUSS

DATE 6-17-04

ROUTE SR 64

H.C. HOMAN

WEATHER CLOUDY

COUNTY LUCAS

R.C. ADKINS

TEMP. 78°

TOWNSHIP SWANTON

SECTION 31

T 7 N R 5 E

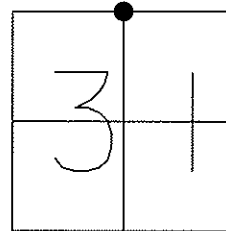
TYPE MONUMENT RR SPIKE

ON SURFACE ~~-BELOW~~ YES

~~LEFT~~ - Q PAV'T ~~RIGHT~~ YES

TO EDGE PAVEMENT

S.L.M. 470+98



N¹/₄ COR SEC 31

SET MAG NAIL
& WASHER
10-12-04
MB

FD DUPLEX
NAIL



44.61'

Q SR 64
monument

SAWED "X" CUT
ON CONC ISLAND

47.60'

53.80'

SAWED "X" CUT
ON CONC ISLAND

Q SHERMAN WHITE RD

Q SR 64

42.98'

Q PROVIDENCE - NEAR - SWANTON

FD DUPLEX
NAIL



Resurfaced 2004

O.D.O.T. DISTRICT 2 SURVEY OFFICE

PERSONNEL

REFERENCE NO. 48

SHEET 1 OF 9

NOTES D. CURTIS

H.C. J. HOUSEHOLDER DATE 9-25-86

R.C. _____ WEATHER CLOUDY

_____ TEMP. 70°

ROUTE S.R. 64

COUNTY LUCAS

TOWNSHIP SWANTON

SECTION 31

T _____ R _____

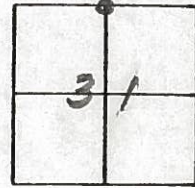
TYPE MONUMENT R.R. SPK.

ON SURFACE - BELOW ON SURFACE

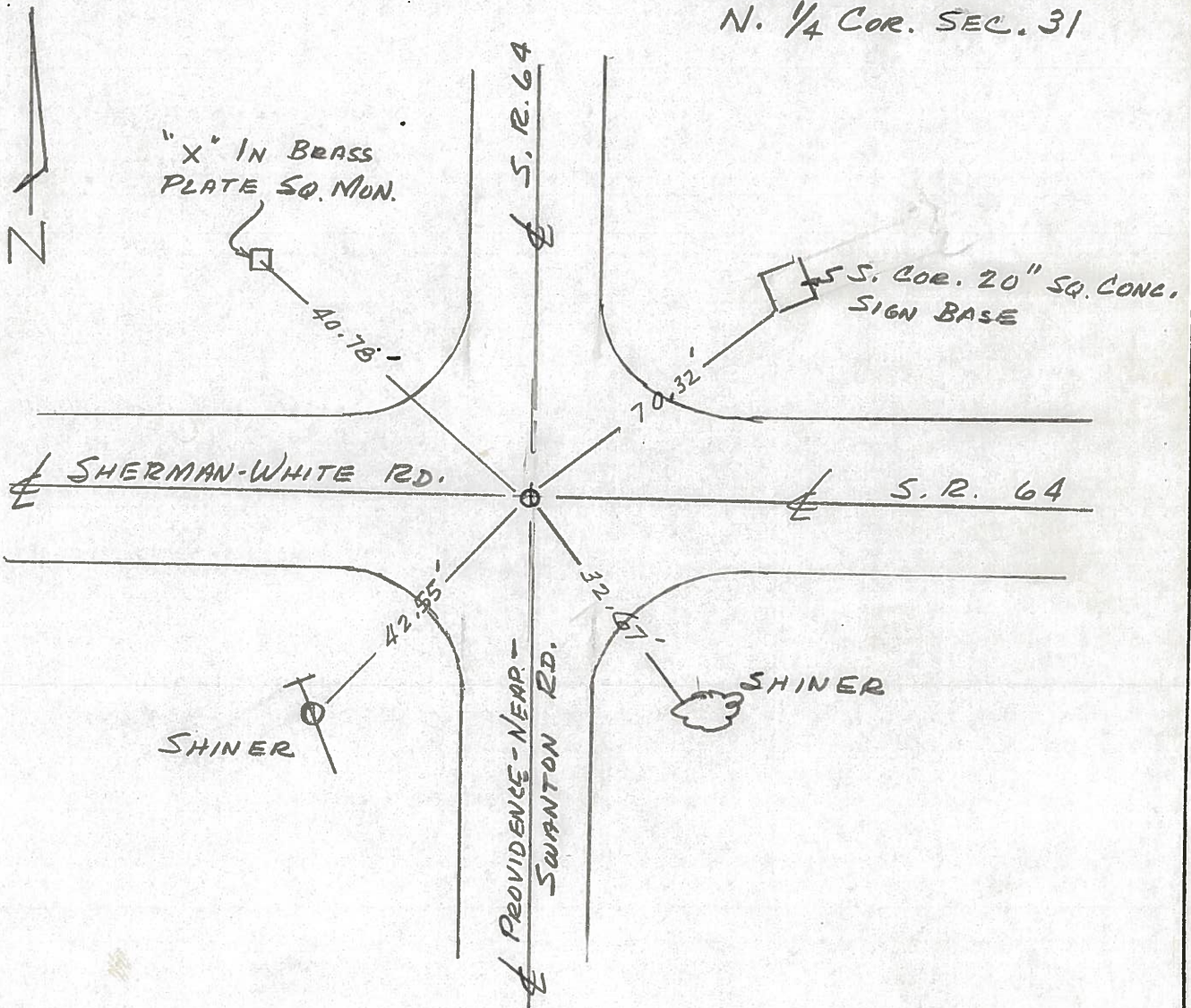
LEFT - ☉ PAV'T. - RIGHT _____

_____ TO _____ EDGE PAVEMENT

S.L.M. _____



N. 1/4 COR. SEC. 31



County LUCAS S.R. 64

Date 5-22-81

Township SWANTON

Weather clear

Section 31

Temp. 80°

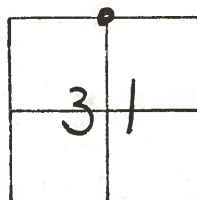
TZN, RSE

Personnel S. Hoffman

C. Locke

J. Householder

#48



Fd R.R. SPK / "t" @ SURFACE

SQUARE MOD BRASS PLATE / "X"

WEST
Guard Rail
Post
Shiner SE/S

S. WESTERLY EDGE
20" SQUARE CON.
SIGN BASE (MARATHON)
@ Ground Level

Sherman-White Rd.

64

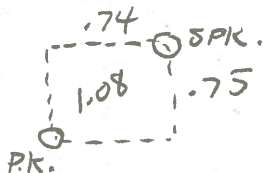
Shiner
NE/S

Shiner NW/ROOT of
36" MARLE

SET P.K. NAIL ON OUR
REF. TIES - OVER A GOOD
READING WITH SCHONSTEDT

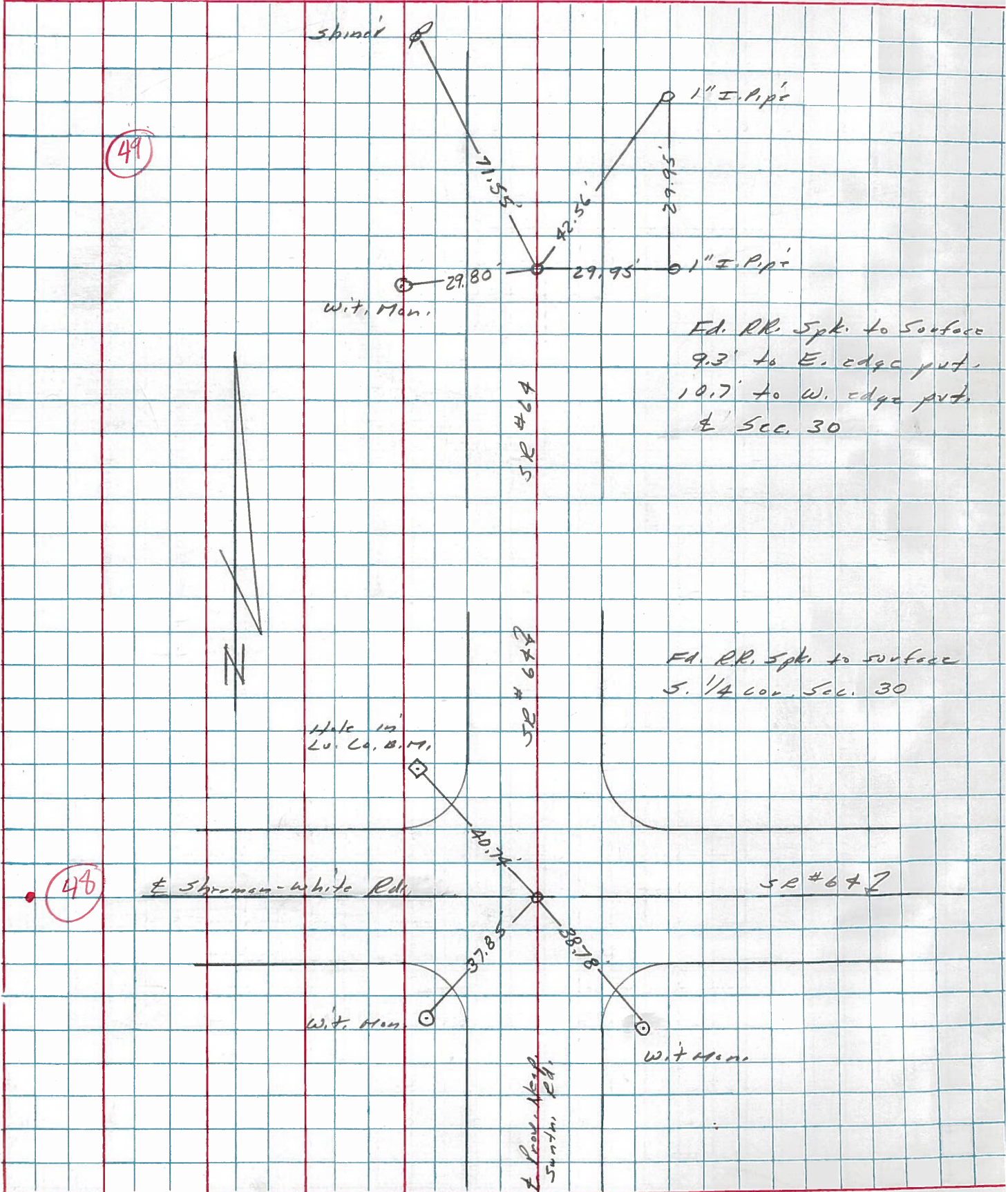
10-28-81
SWH

FD. R.R. SPK / t
10-28-81
SWH



PERSONNEL	TITLE	PERSONNEL	TITLE	COUNTY	DATE	WEATHER	TEMP.
Stone		Granatz		Lucas	17 Nov. 77	Cool	72°
Michalalek				S. R. 64			
Neuse				SEC.			
Curtis							

DESCRIPTION References to Control Points JOB NO. _____



PERSONNEL TITLE PERSONNEL TITLE COUNTY Lucas DATE 3 Mar. 66
 Stone Beck S. R. #64 WEATHER Mild
 Brindley Schroder SEC. Whitehouse - w. TEMP. 60°
 DESCRIPTION Refs. To Control Pts. JOB NO.

LEFT CENTER LINE RIGHT

DESCRIPTION	LEFT	CENTER LINE	RIGHT	JOB NO.
44 #205 Int. Wilkens Rd. 4" L.H. Ed. Stone 2" Below Surface		29.11' 37.87' 39.58'	29.05' 31.81' 39.50'	S. To Con. Ref. Mon. (D) N.E. To Con. Ref. Mon. (D) N.W. To "V" in Lu. Co. B.M. (D)
45 #204 Int. Ostrich Rd. Ed. Brass Plate 1" Below Surface		43.64' 32.64'		N.E. To Con. Wrt. Mon. (D) N.W. To Con. Wrt. Mon. (D) E. To Con. Wrt. Mon. (D)
46 #203 Int. Jeffers Rd. Ed. Brass Plate 1 1/2" Below Surface		38.65' 40.62' 48.20'		N.W. To "T" in Lu. Co. B.M. (D) N.E. To Con. Wrt. Mon. (D) S.W. To Con. Wrt. Mon. (D)
47 #202 Int. Mamora Rd. Ed. Hole in Con. 2" Below Surface		34.76' 31.63' 36.47' 36.24'		N.W. To Con. Wrt. Mon. (D) N.E. To Con. Wrt. Mon. (D) S.W. To Con. Wrt. Mon. (D) S.E. To "T" in Lu. Co. B.M. (D)
48 #201 N.E. 1/4 Sec. 30 E 31 Lat. Switzer Rd. N. Ed. R.R. Spk. To Surface		37.82' 38.77' 40.76'		S.W. To Con. Wrt. Mon. (D) S.E. To Con. Wrt. Mon. (D) N.W. To Hole in Lu. Co. B.M. (D)
49 #200 E 1/4 Sec. 30 Ed. R.R. Spk. To Surface		27.86' 40.26' 29.93' 71.54'		E. To Hole in Lu. Co. B.M. (D) N.E. To Con. Wrt. Mon. (D) W. To Con. Wrt. Mon. (D) N.W. To Shiner in P.S. (D)