

O.D.O.T. DISTRICT 2 SURVEY OFFICE (USE ONLY)

PERSONNEL _____

REFERENCE NO. 49

SHEET 48 OF 56

NOTES NIESE DATE 5/9/23
 H.C. AUBLE WEATHER SUNNY
 R.C. ASTON TEMP. 56°

ROUTE SR 64
 COUNTY LUCAS
 TOWNSHIP WATERVILLE
 SECTION 30
 T 7 N R 9 E

DWG BY RHOADES PID PAVING TRAIN

TYPE MONUMENT MAG/WASHER

ON SURFACE - ~~BELOW~~ ON

OFFSET \odot PAVEMENT 0.5' ~~LT~~ : RT

10' TO LT EDGE PAVEMENT

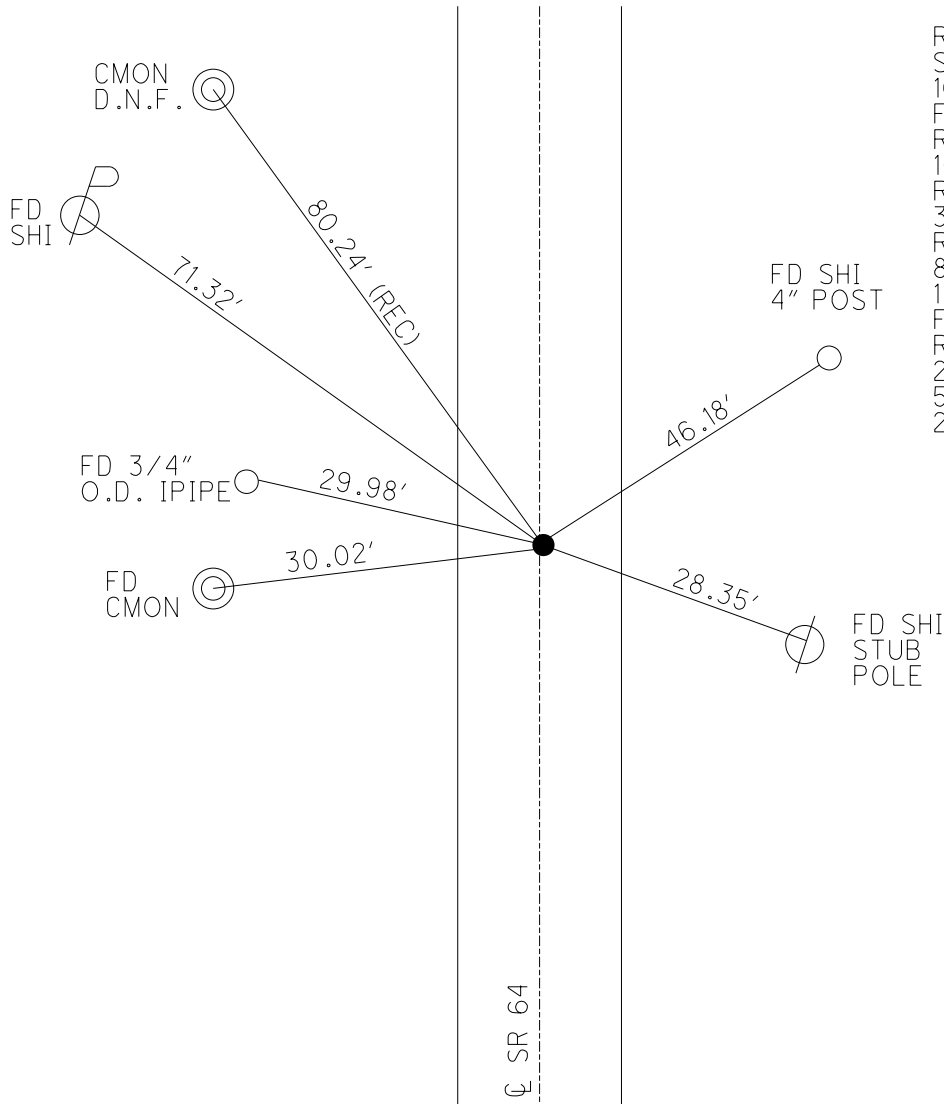
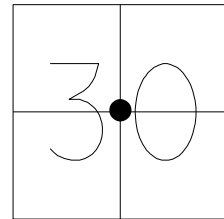
STATION: 497+11.50

HORZ. DATUM: NAD83 (2011)

GEOID: NAVD88 2018

GRID: NORTHING: 684800.870

EASTING: 1592554.649

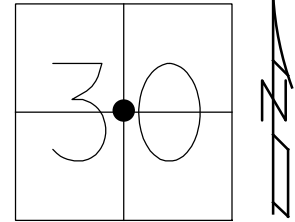


RECORD:
 SET MAG/WASHER
 10-12-04, MB
 FD MAG/WASHER
 REF49
 1-15-16, JFO
 REF49
 3-6-19, JLL
 REF49
 8/23/22, TDN
 11/21/22, TDN
 FD MAG/WASHER
 REF49
 2/6/23, JAM
 5/9/23, TDN
 2/27/24, JMR

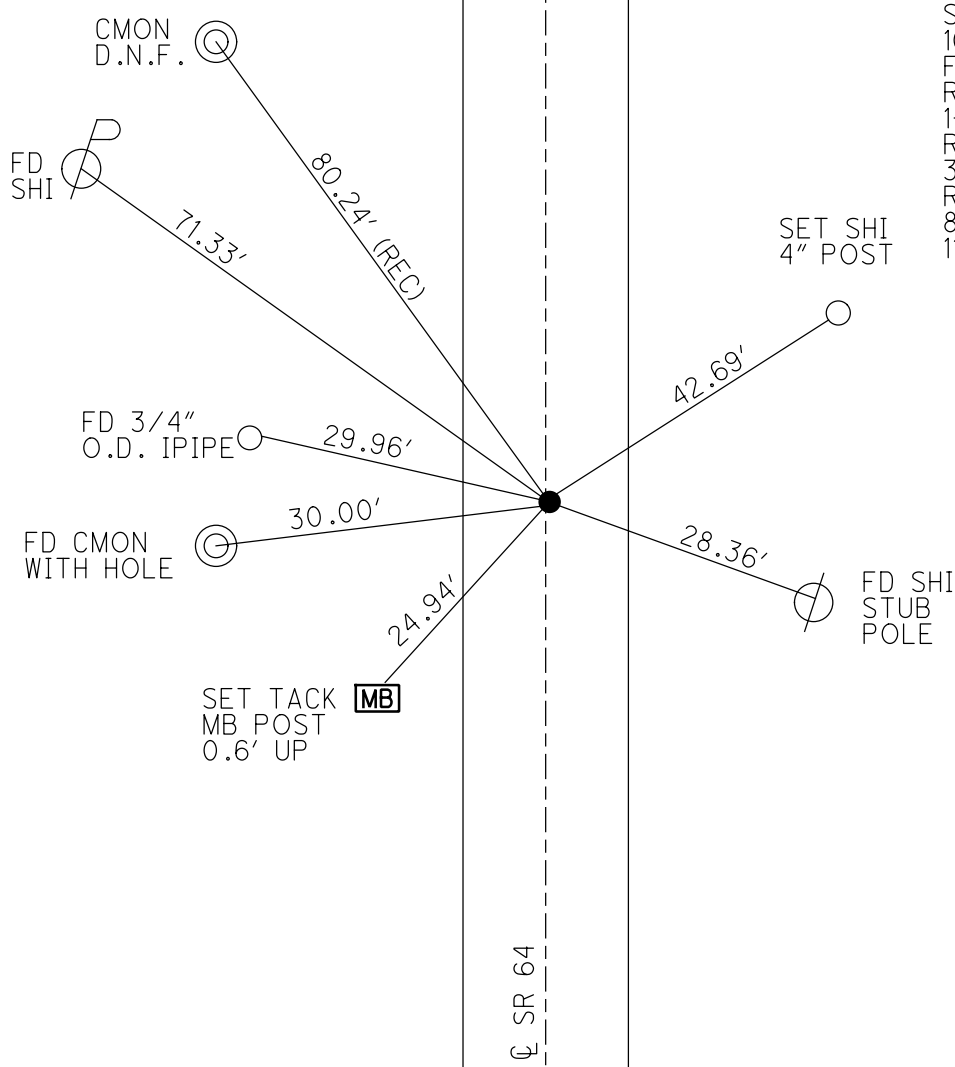
O.D.O.T. DISTRICT 2 SURVEY OFFICE (USE ONLY)

PERSONNEL _____ REFERENCE NO. 49 SHEET 48 OF 56
 NOTES AUBLE DATE 5/7/20 ROUTE SR 64
 H.C. LEU WEATHER WINDY COUNTY LUCAS
 R.C. BALBAUGH TEMP. 66° TOWNSHIP WATERVILLE
 _____ SECTION 30
 DWG BY GARRETT PID 107059 T 7 N R 9 E

TYPE MONUMENT MAG/WASHER
 ON SURFACE - ~~BELOW~~ ON
 OFFSET ☉ PAVEMENT ON _____ LT : RT
10' TO LT EDGE PAVEMENT
 STATION: 497+11.50



HORZ.DATUM: NAD83 (2011) GEOID: 2012A
 GRID: NORTHING: 684800.870 EASTING: 1592554.649

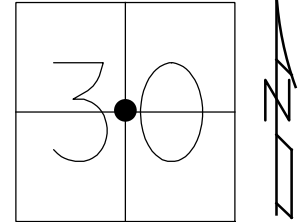


RECORD:
 SET MAG/WASHER
 10-12-04, MB
 FD MAG/WASHER
 REF49
 1-15-16, JFO
 REF49
 3-6-19, JLL
 REF49
 8/23/22, TDN
 11/21/22, TDN

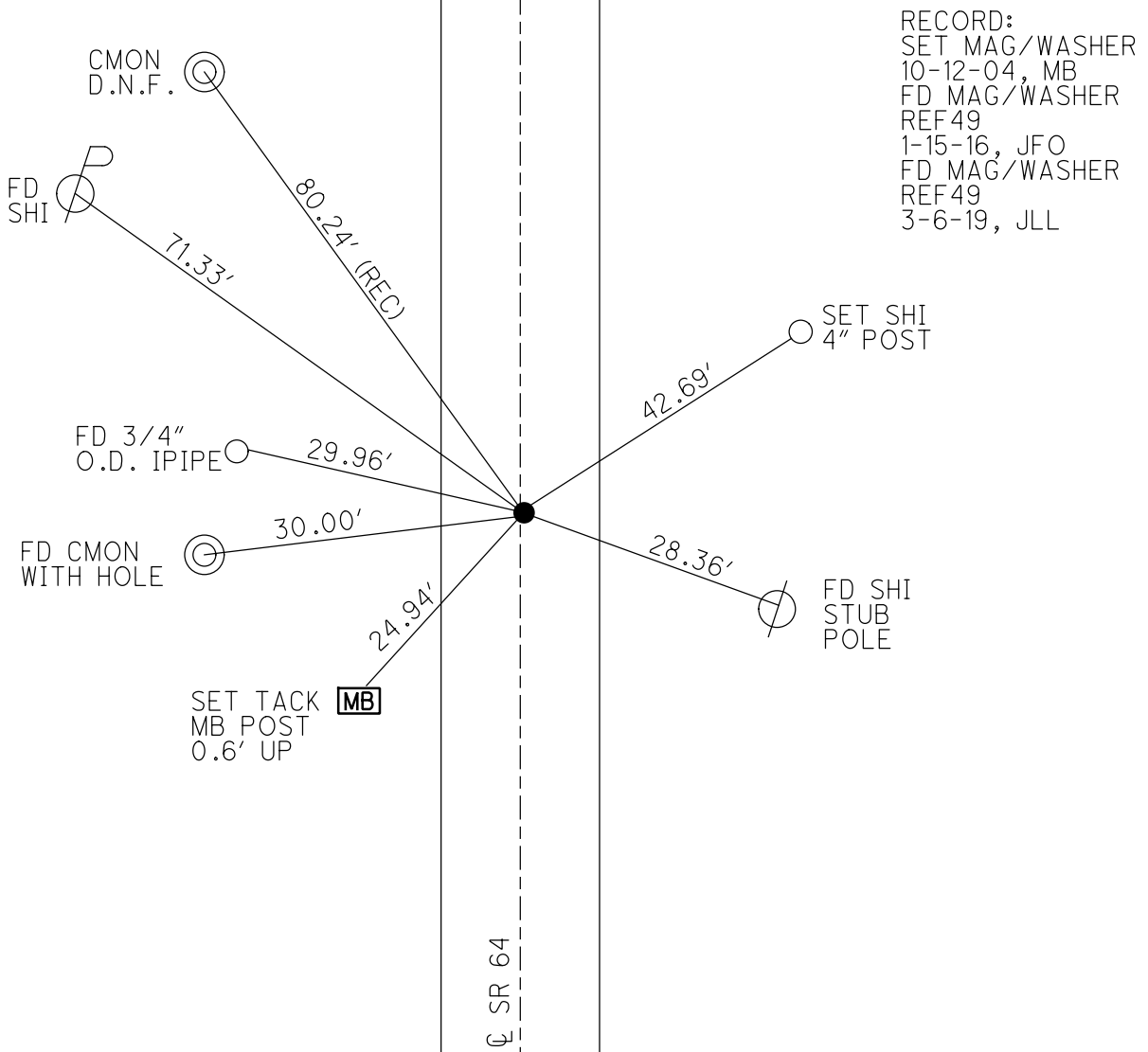
O.D.O.T. DISTRICT 2 SURVEY OFFICE (USE ONLY)

PERSONNEL _____ REFERENCE NO. 49 SHEET 48 OF 56
 NOTES AUBLE DATE 5/7/20 ROUTE SR 64
 H.C. LEU WEATHER WINDY COUNTY LUCAS
 R.C. BALBAUGH TEMP. 66° TOWNSHIP WATERVILLE
 DWG BY GARRETT PID 107059 SECTION 30
 T 7 N R 9 E

TYPE MONUMENT MAG/WASHER
 ON SURFACE - ~~BELOW~~ ON
 OFFSET 0 PAVEMENT ON LT : RT
10' TO LT EDGE PAVEMENT
 STATION: 497+11.50



HORZ. DATUM: NAD83 (2011) GEOID: 2012A
 GRID: NORTHING: 684800.870 EASTING: 1592554.649

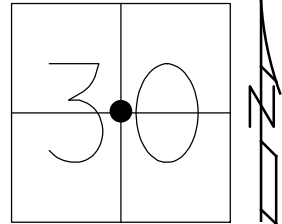


O.D.O.T. DISTRICT 2 SURVEY OFFICE (USE ONLY)

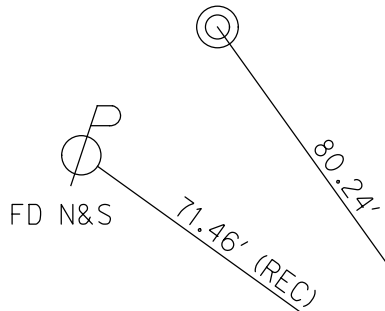
PERSONNEL _____ REFERENCE NO. 49 SHEET 48 OF 50

NOTES HUSS DATE 6-16-04 ROUTE SR 64
 H.C. HOMAN WEATHER CLOUDY COUNTY LUCAS
 R.C. HUSS TEMP. 70° TOWNSHIP WATERVILLE
 _____ SECTION 30
 _____ T 7 N R 9 E

TYPE MONUMENT SM.R.R.SPIKE
 ON SURFACE - ~~BELOW~~ ON
~~LEFT - C PAV'T - RIGHT~~ ON
10' TO LT EDGE PAVEMENT
 S.L.M. 497+96.13
 Grid: Northing: 684800.9177 Easting: 1592554.6516

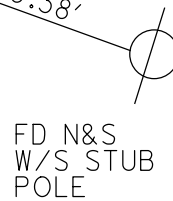
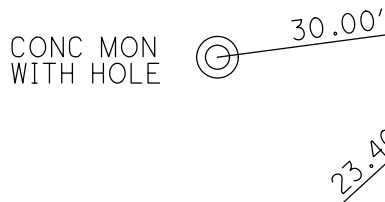


CONC MON
WITH HOLE



RECORD:
SET MAG/WASHER
10-12-04, MB
FD MAG/WASHER
REF 49
1-15-16, JFO

CONC MON
WITH HOLE



C SR 64

O.D.O.T. DISTRICT 2 SURVEY OFFICE

PERSONNEL _____

REFERENCE NO. 49

SHEET 2 OF 10

NOTES _____ HUSS _____

DATE 6-16-04

ROUTE SR 64

H.C. _____ HOMAN _____

WEATHER CLOUDY

COUNTY LUCAS

R.C. _____ HUSS _____

TEMP. 70°

TOWNSHIP SWANTON

SECTION 30

T 7 N R 9 E

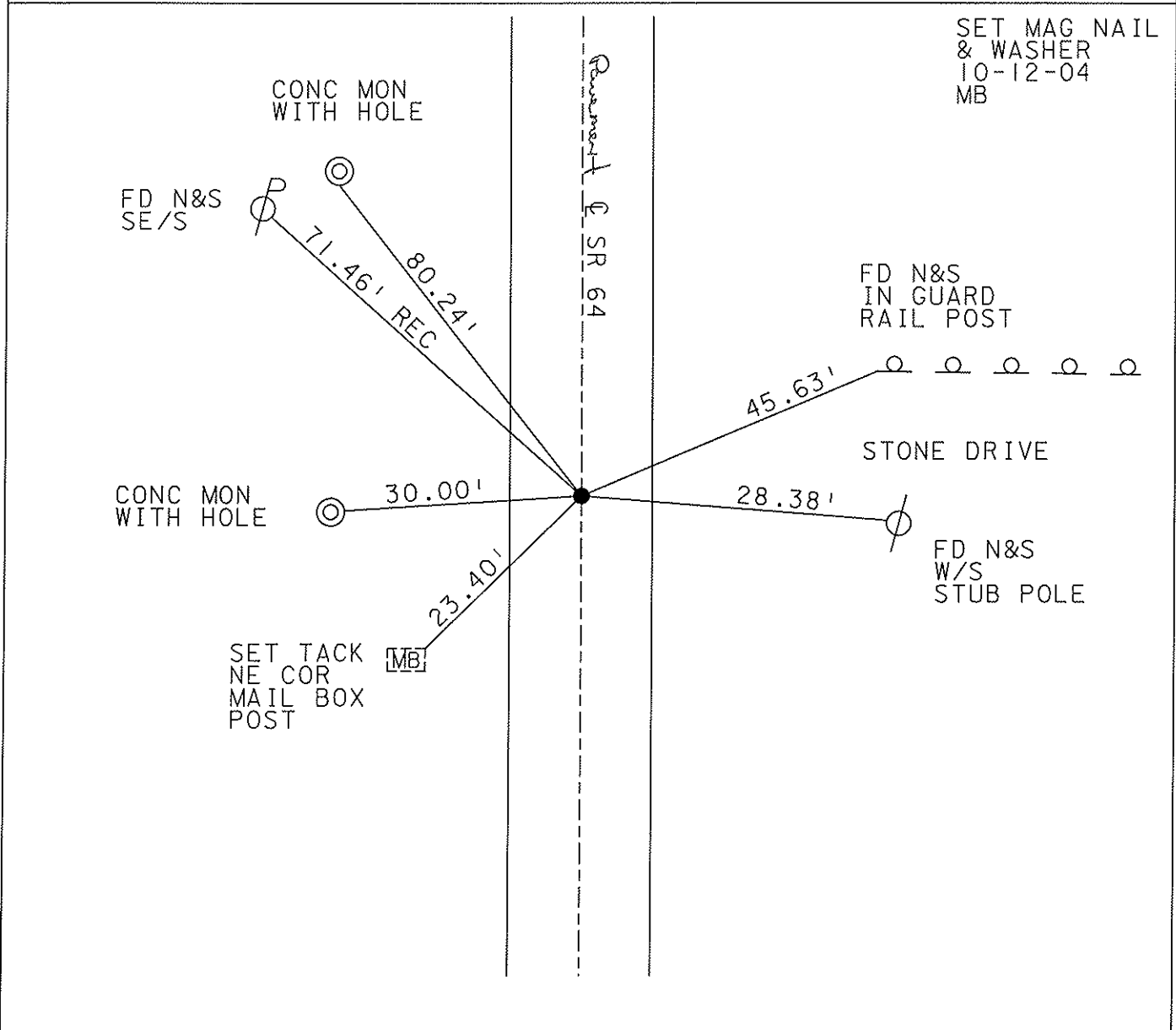
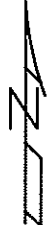
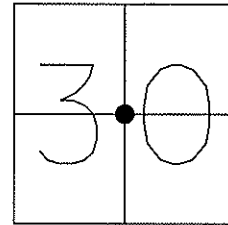
TYPE MONUMENT _____ SM RR SPIKE _____

ON SURFACE - ~~BELOW~~ _____ YES _____

~~LEFT~~ - Q PAV'T - ~~RIGHT~~ _____ YES _____

10' TO LT EDGE PAVEMENT _____

S.L.M. _____ 497+75 _____



O.D.O.T. DISTRICT 2 SURVEY OFFICE

PERSONNEL _____

REFERENCE NO. 49

SHEET 2 OF 9

NOTES D. CURTIS

H.C. J. HOUSEHOLDER

DATE 9-25-86

ROUTE S.R. 64

R.C. _____

WEATHER CLOUDY

COUNTY LUCAS

TEMP. 70°

TOWNSHIP SWANTON

SECTION 30

T. _____ R. _____

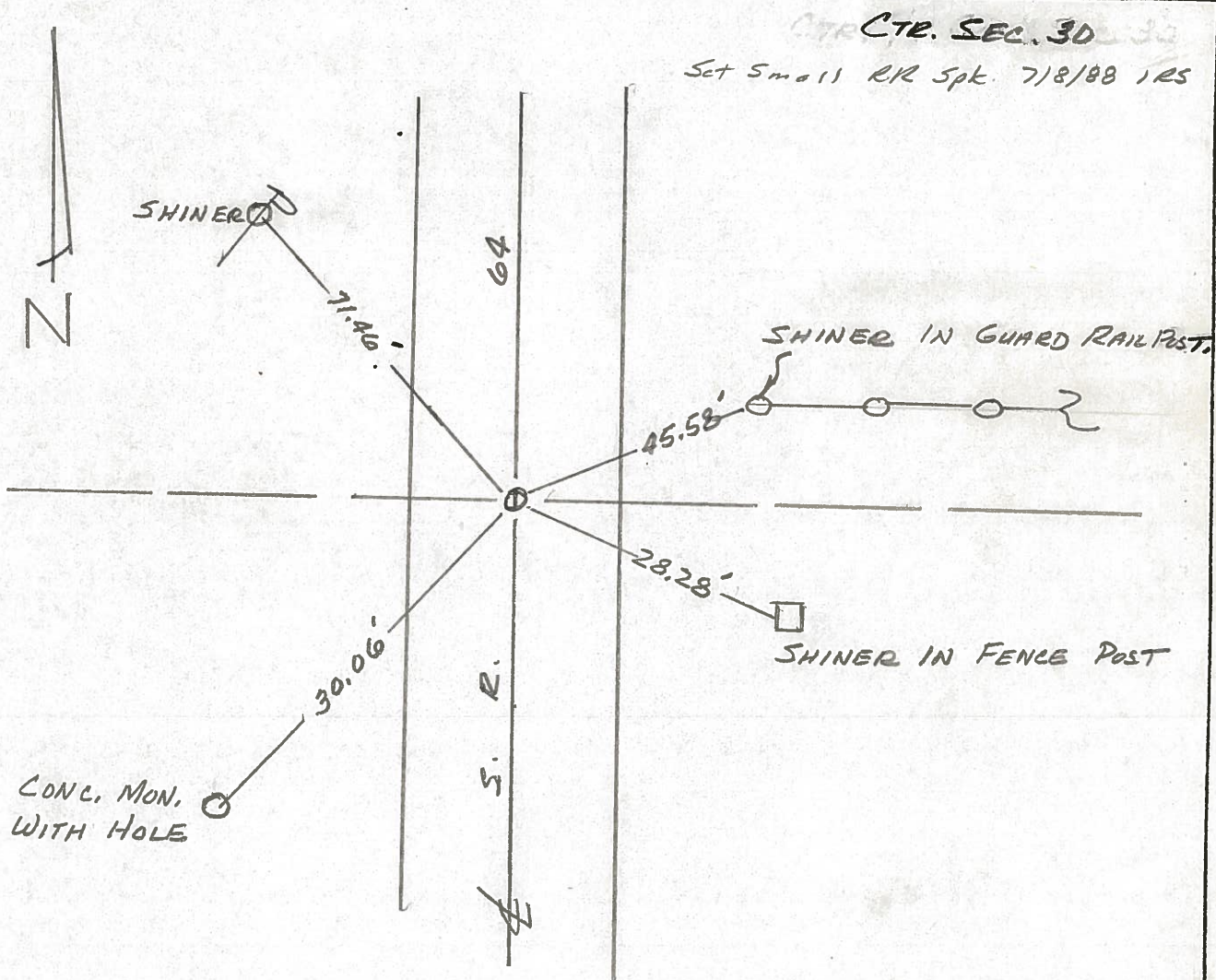
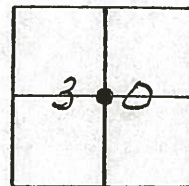
TYPE MONUMENT R.R. SPK.

ON SURFACE - BELOW 1" BELOW SURF.

LEFT-☉ PAV'T. - RIGHT 1' RT. & PAV'T

TO _____ EDGE PAVEMENT

S.L.M. 497 + 75



County LUCAS S.R. 64

Township SWANTON

Section 30

T2N, R5E

Personnel S. Hoffman

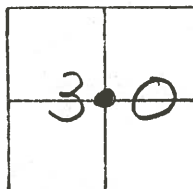
C. Loehrke

J. Householder

Date 5-22-81

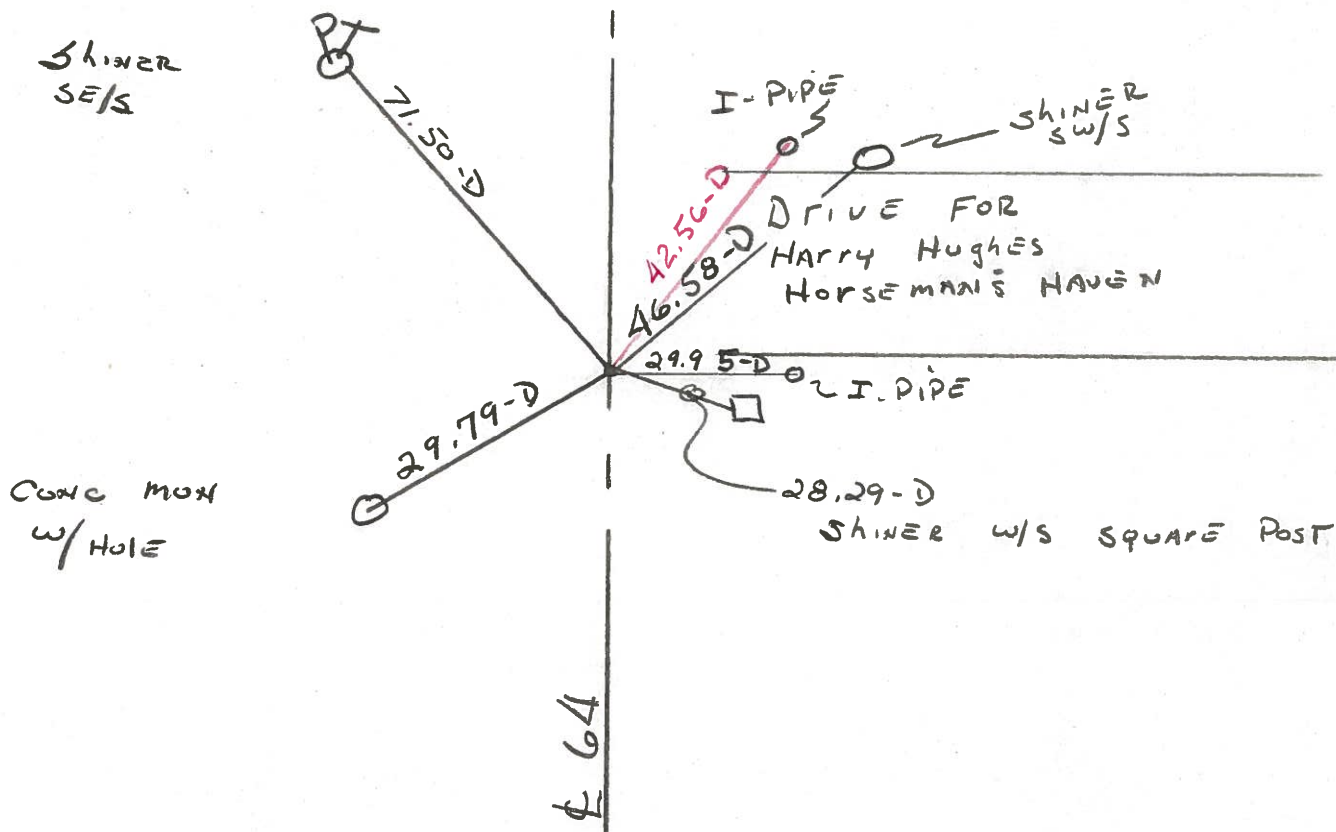
Weather Clear

Temp. 80°



#49

Fd. R.R. SPK 1" Below
SURFACE
9.3' TO E. EDGE PUT
10.7' TO W. EDGE PUT



PERSONNEL TITLE PERSONNEL TITLE COUNTY Lucas DATE 3 Mar. 66
 Stone Beck S. R. #64 WEATHER Mild
 Brindley Schroder SEC. Whitehouse - w. TEMP. 60°
 DESCRIPTION Rets. To Control Pts. JOB NO.

	LEFT	CENTER LINE	RIGHT
44			
#205	Int. Wilkens Rd. 4" L.H. Ed. Stone 2" Below Surface	29.11' 37.87' 39.58'	29.05' 31.81' 39.50'
			S. To Con. Ref. Mon. (D) N.E. To Con. Ref. Mon. (D) N.W. To "V" in Lu. Co. B.M. (D)
45			
#204	Int. Ostrich Rd. Ed. Brass Plate 1" Below Surface	43.64' 32.64'	
			N.E. To Con. Wrt. Mon. (D) N.W. To Con. Wrt. Mon. (D) E. To Con. Wrt. Mon. (D)
46			
#203	Int. Jeffers Rd. Ed. Brass Plate 1 1/2" Below Surface	38.65' 40.62' 48.20'	
			N.W. To "T" in Lu. Co. B.M. (D) N.E. To Con. Wrt. Mon. (D) S.W. To Con. Wrt. Mon. (D)
47			
#202	Int. Hamora Rd. Ed. Hole in Con. 2" Below Surface	34.76' 31.63' 36.47' 36.24'	
			N.W. To Con. Wrt. Mon. (D) N.E. To Con. Wrt. Mon. (D) S.W. To Con. Wrt. Mon. (D) S.E. To "T" in Lu. Co. B.M. (D)
48			
#201	N.E. & Sec. 30 & 31 Lat. Swanton Rd. N. Ed. R.R. Spk. To Surface	37.82' 38.77' 40.76'	
			S.W. To Con. Wrt. Mon. (D) S.E. To Con. Wrt. Mon. (D) N.W. To Hole in Lu. Co. B.M. (D)
49			
#200	E.F.W. & Sec. 30 Ed. R.R. Spk. To Surface	27.86' 40.26' 29.93' 71.54'	
			E. To Hole in Lu. Co. B.M. (D) N.E. To Con. Wrt. Mon. (D) W. To Con. Wrt. Mon. (D) N.W. To Shire in P.S. (D)