

O.D.O.T. DISTRICT 2 SURVEY OFFICE (USE ONLY)

PERSONNEL _____

REFERENCE NO. 50

SHEET 49 OF 56

NOTES NIESE DATE 5/9/23
 H.C. AUBLE WEATHER SUNNY
 R.C. ASTON TEMP. 60°

ROUTE SR 64
 COUNTY LUCAS
 TOWNSHIP WATERVILLE
 SECTION 19 & 30
 T 7 N R 9 E

DWG BY RHOADES PID PAVING TRAIN

TYPE MONUMENT MAG/WASHER

ON SURFACE - ~~BELOW~~ ON

OFFSET \odot PAVEMENT 1.0' LT : ~~RT~~

8.2' TO LT EDGE PAVEMENT

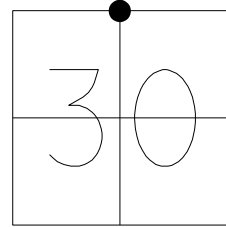
STATION: 523+61.01

HORZ. DATUM: NAD83 (2011)

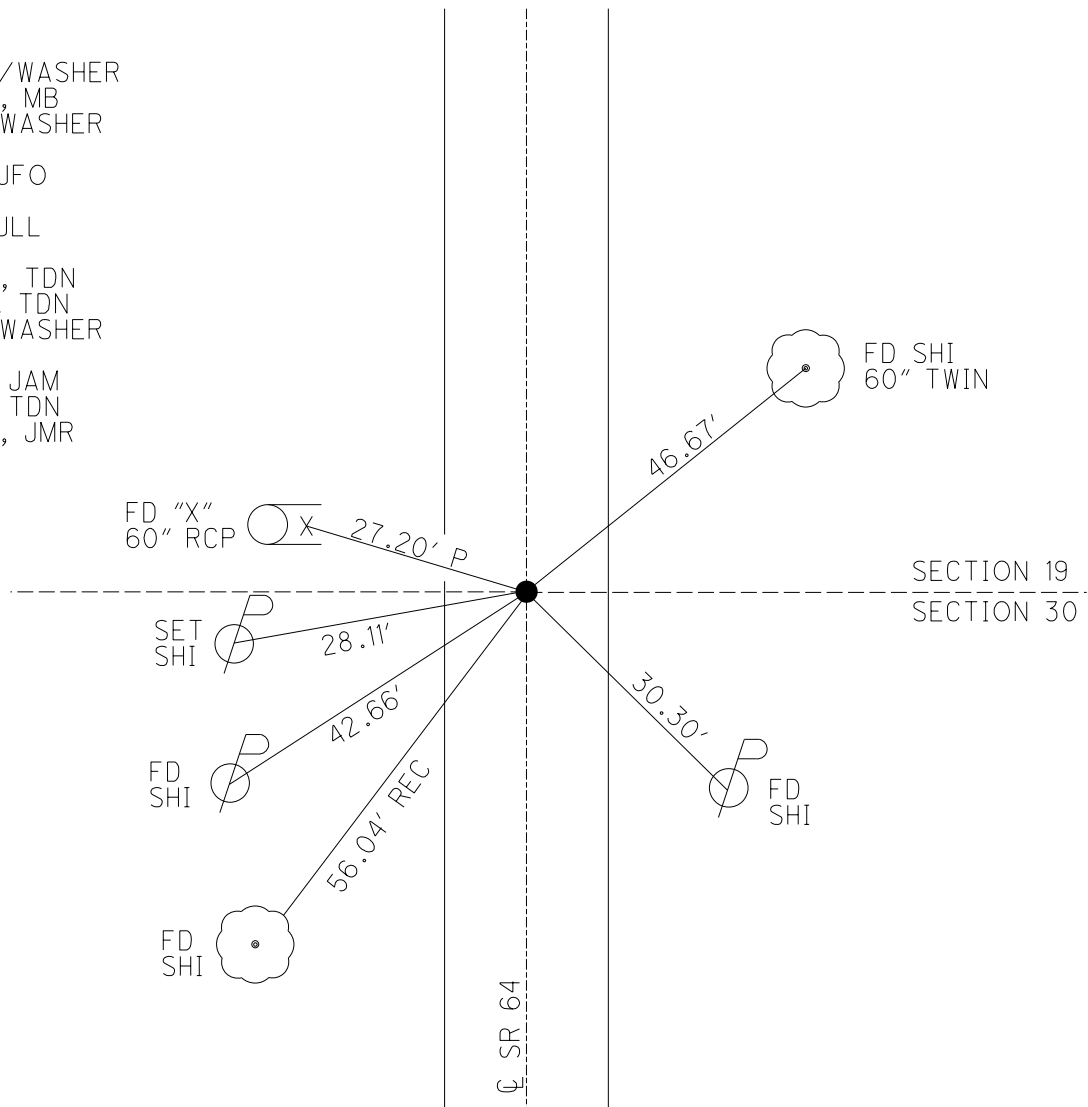
GEOID: NAVD88 2018

GRID: NORTHING: 687450.127

EASTING: 1592589.996



- RECORD:
 SET MAG/WASHER
 10-12-04, MB
 FD MAG/WASHER
 REF50
 1-15-16, JFO
 REF50
 3-6-19, JLL
 REF50
 8/23/22, TDN
 11/21/22, TDN
 FD MAG/WASHER
 REF50
 2/6/23, JAM
 5/9/23, TDN
 2/27/24, JMR



O.D.O.T. DISTRICT 2 SURVEY OFFICE (USE ONLY)

PERSONNEL

REFERENCE NO. 50

SHEET 49 OF 56

NOTES AUBLE DATE 5/7/20
 H.C. LEU WEATHER WINDY
 R.C. BALBAUGH TEMP. 66°

ROUTE SR 64
 COUNTY LUCAS
 TOWNSHIP WATERVILLE
 SECTION 19 & 30

DWG BY GARRETT PID 107059

T 7 N R 9 E

TYPE MONUMENT MAG NAIL

ON SURFACE - ~~BELOW~~ ON

OFFSET \varnothing PAVEMENT 1.0' LT : ~~RT~~

8.2' TO LT EDGE PAVEMENT

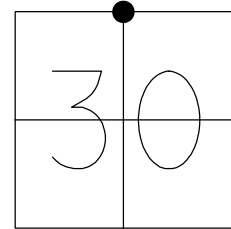
STATION: 523+61.01

HORZ. DATUM: NAD83 (2011)

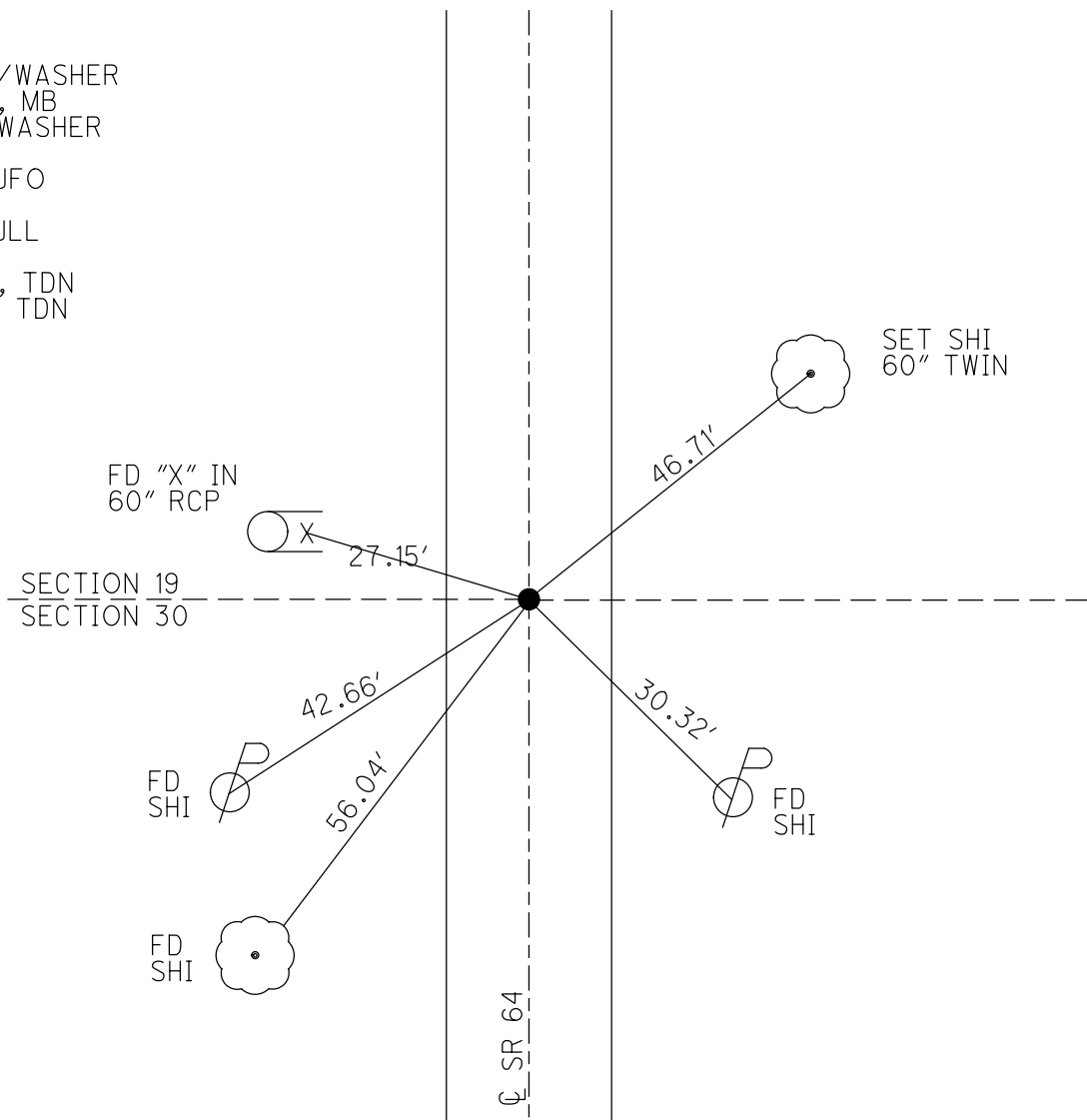
GEOID: 2012A

GRID: NORTHING: 687450.127

EASTING: 1592589.996



RECORD:
 SET MAG/WASHER
 10-12-04, MB
 FD MAG/WASHER
 REF50
 1-15-16, JFO
 REF50
 3-6-19, JLL
 REF50
 8/23/22, TDN
 11/21/22, TDN



O.D.O.T. DISTRICT 2 SURVEY OFFICE (USE ONLY)

PERSONNEL

REFERENCE NO. 50

SHEET 49 OF 56

NOTES AUBLE

DATE 5/7/20

ROUTE SR 64

H.C. LEU

WEATHER WINDY

COUNTY LUCAS

R.C. BALBAUGH

TEMP. 66°

TOWNSHIP WATERVILLE

SECTION 19 & 30

DWG BY GARRETT

PID 107059

T 7 N R 9 E

TYPE MONUMENT MAG NAIL

ON SURFACE - ~~BELOW~~ ON

OFFSET Q PAVEMENT 1.0' LT : ~~RT~~

8.2' TO LT EDGE PAVEMENT

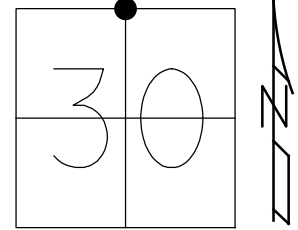
STATION: 523+61.01

HORZ. DATUM: NAD83 (2011)

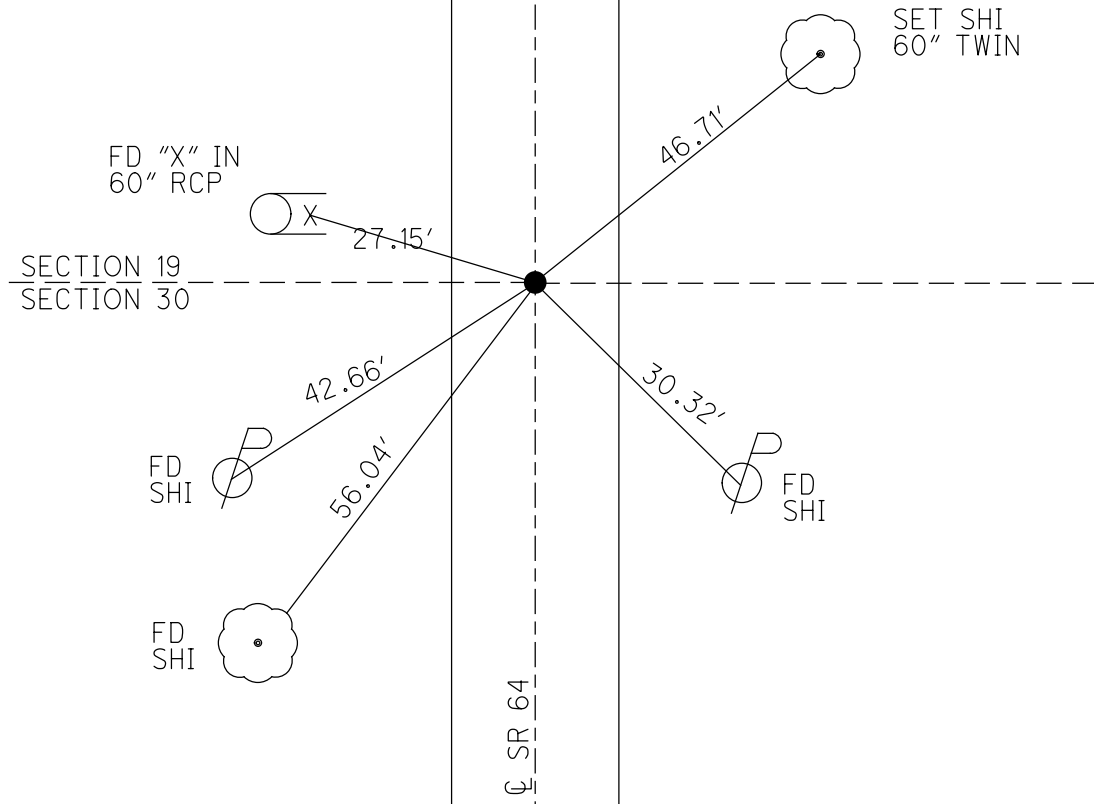
GEOID: 2012A

GRID: NORTHING: 687450.135

EASTING: 1592590.096



RECORD:
 SET MAG/WASHER
 10-12-04, MB
 FD MAG/WASHER
 REF50
 1-15-16, JFO
 FD MAG/WASHER
 RECREF50
 3-6-19, JLL

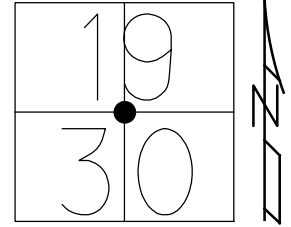


O.D.O.T. DISTRICT 2 SURVEY OFFICE (USE ONLY)

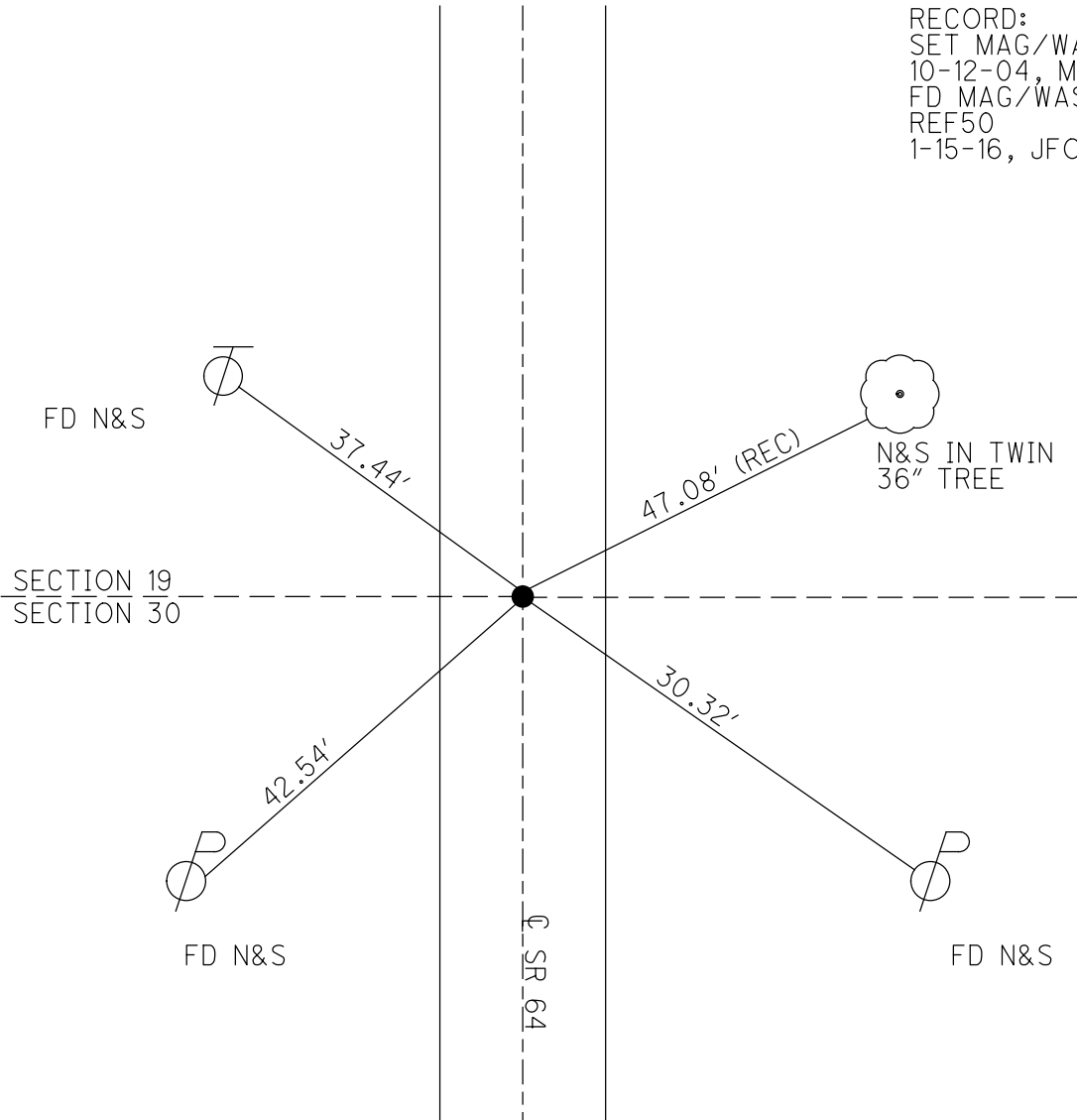
PERSONNEL _____ REFERENCE NO. 50 SHEET 49 OF 50

NOTES HUSS DATE 6-16-04 ROUTE SR 64
 H.C. HOMAN WEATHER CLOUDY COUNTY LUCAS
 R.C. HUSS TEMP. 74° TOWNSHIP WATERVILLE
 SECTION 19 & 30
 T 7 N R 9 E

TYPE MONUMENT SM.R.R.SPIKE
 ON SURFACE - ~~BELOW~~ ON
 LEFT - ☉ PAV'T - ~~RIGHT~~ 1.0'
8.2' TO LT EDGE PAVEMENT
 S.L.M. 524+45.58
 Grid: Northing: 687450.1347 Easting: 1592590.0959



RECORD:
 SET MAG/WASHER
 10-12-04, MB
 FD MAG/WASHER
 REF50
 1-15-16, JFO



O.D.O.T. DISTRICT 2 SURVEY OFFICE

PERSONNEL _____

REFERENCE NO. 50

SHEET 3 OF 10

NOTES _____ HUSS _____

DATE 6-16-04

ROUTE SR 64

H.C. _____ HOMAN _____

WEATHER CLOUDY

COUNTY LUCAS

R.C. _____ HUSS _____

TEMP. 74°

TOWNSHIP SWANTON

SECTION 19 & 30

T 7 N R 9 E

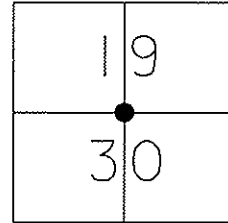
TYPE MONUMENT _____ SM RR SPIKE _____

ON SURFACE - ~~BELOW~~ _____ YES _____

LEFT - ~~C PAVT~~ - ~~RIGHT~~ _____ 1.0' LT _____

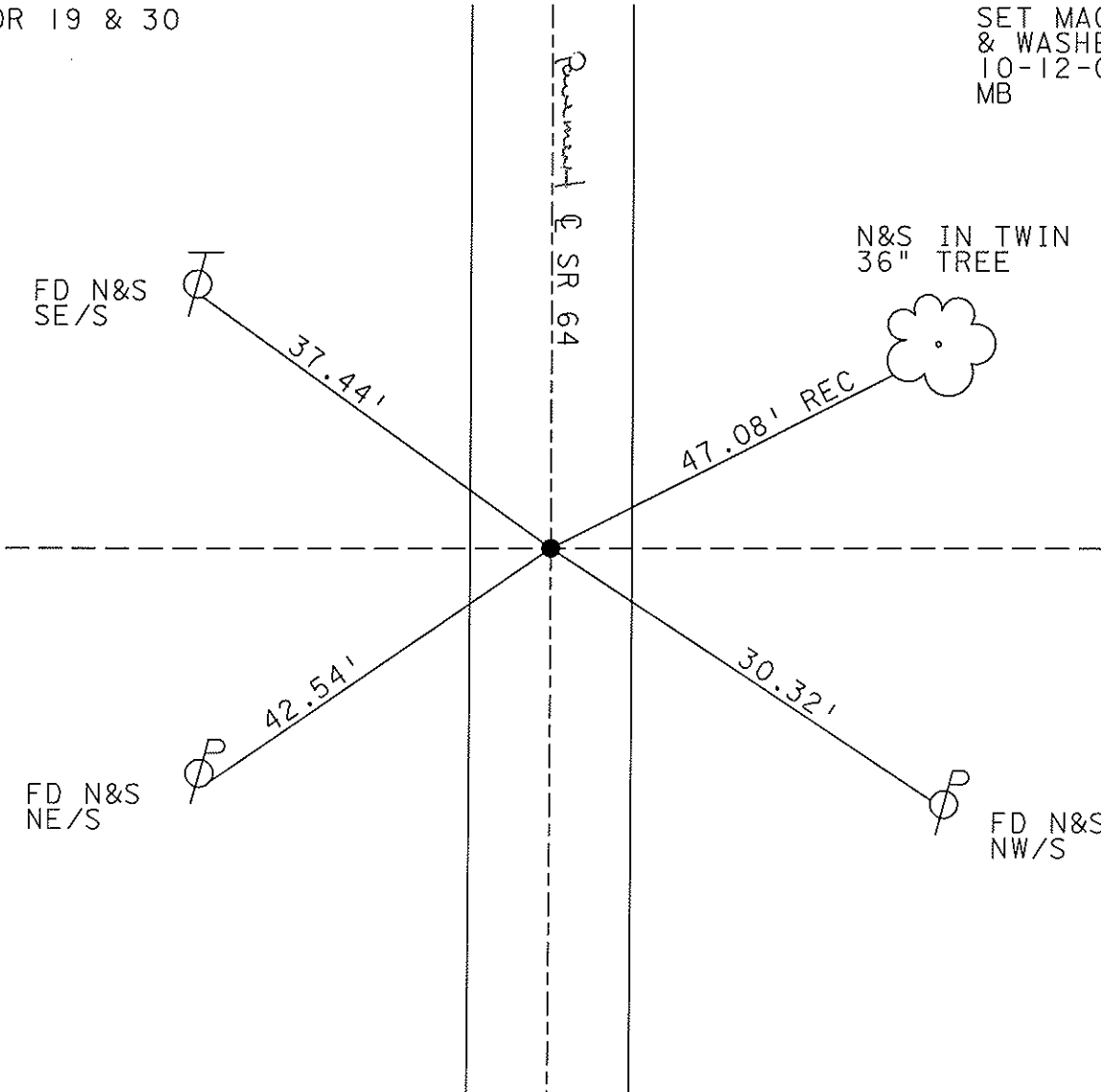
8.2 TO LT EDGE PAVEMENT

S.L.M. _____ 524+25 _____



1/4 COR 19 & 30

SET MAG NAIL
& WASHER
10-12-04
MB



O.D.O.T. DISTRICT 2 SURVEY OFFICE

PERSONNEL _____

REFERENCE NO. 50

SHEET 3 OF 9

NOTES D. CURTIS

H.C. J. HOUSEHOLDER DATE 9-25-86

R.C. _____ WEATHER CLOUDY

_____ TEMP. 70°

ROUTE 64

COUNTY LUCAS

TOWNSHIP SWANTON

SECTION _____

T _____ R _____

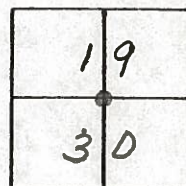
TYPE MONUMENT R. R. SPK.

ON SURFACE - BELOW 2" BELOW SURF.

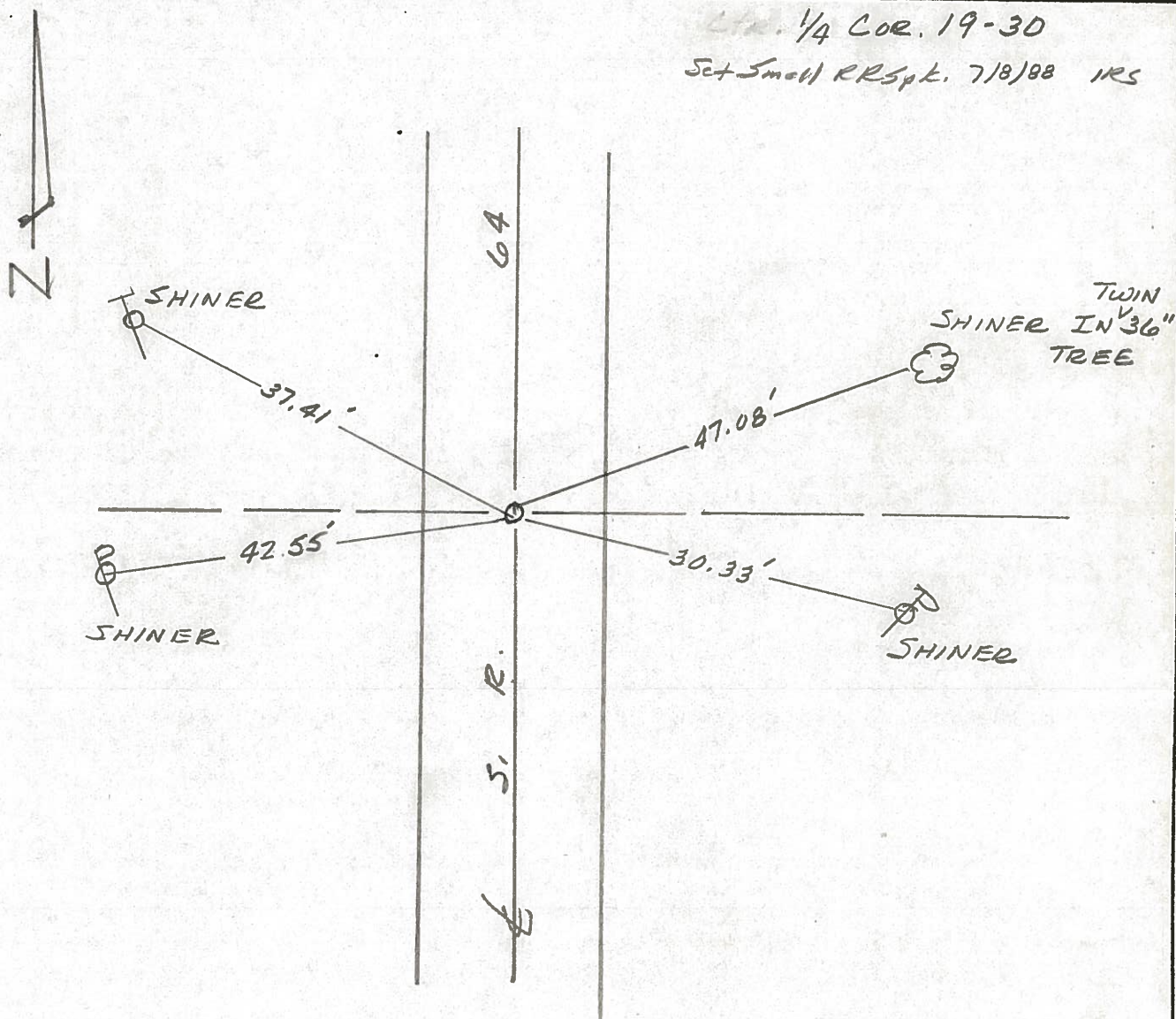
LEFT - ☉ PAV'T. - RIGHT ☉ PAV'T

_____ TO _____ EDGE PAVEMENT

S.L.M. 524 + 25



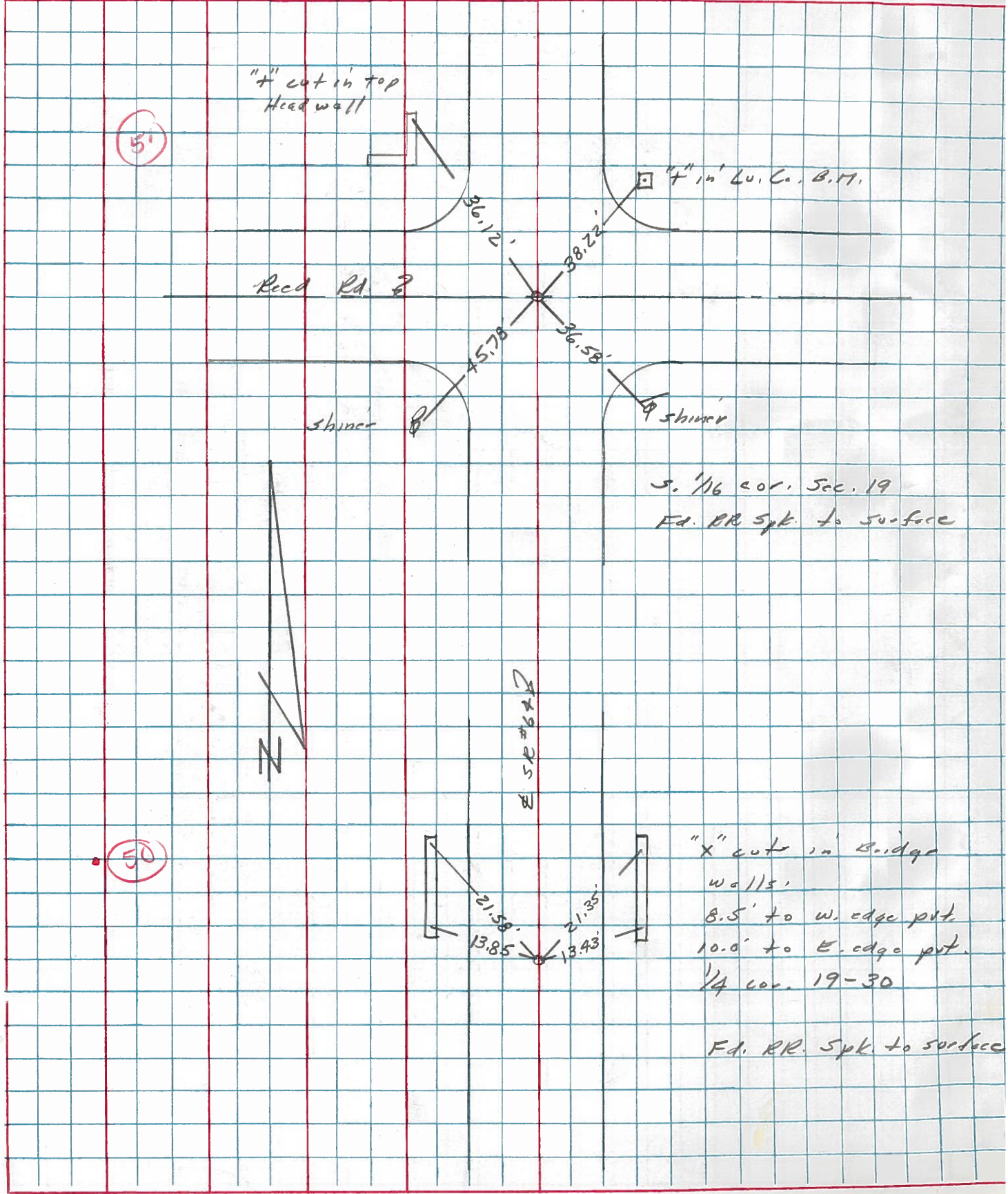
*Cor. 1/4 Cor. 19-30
Set Small RR Spk. 7/18/88 IRS*



PERSONNEL	TITLE	PERSONNEL	TITLE	COUNTY	DATE	WEATHER	TEMP.
Stone		Granda		Lucas	17 Mar. 77	Cool	72°
Michalak				S. R. 64			
Neusco				SEC.			
Curtis							

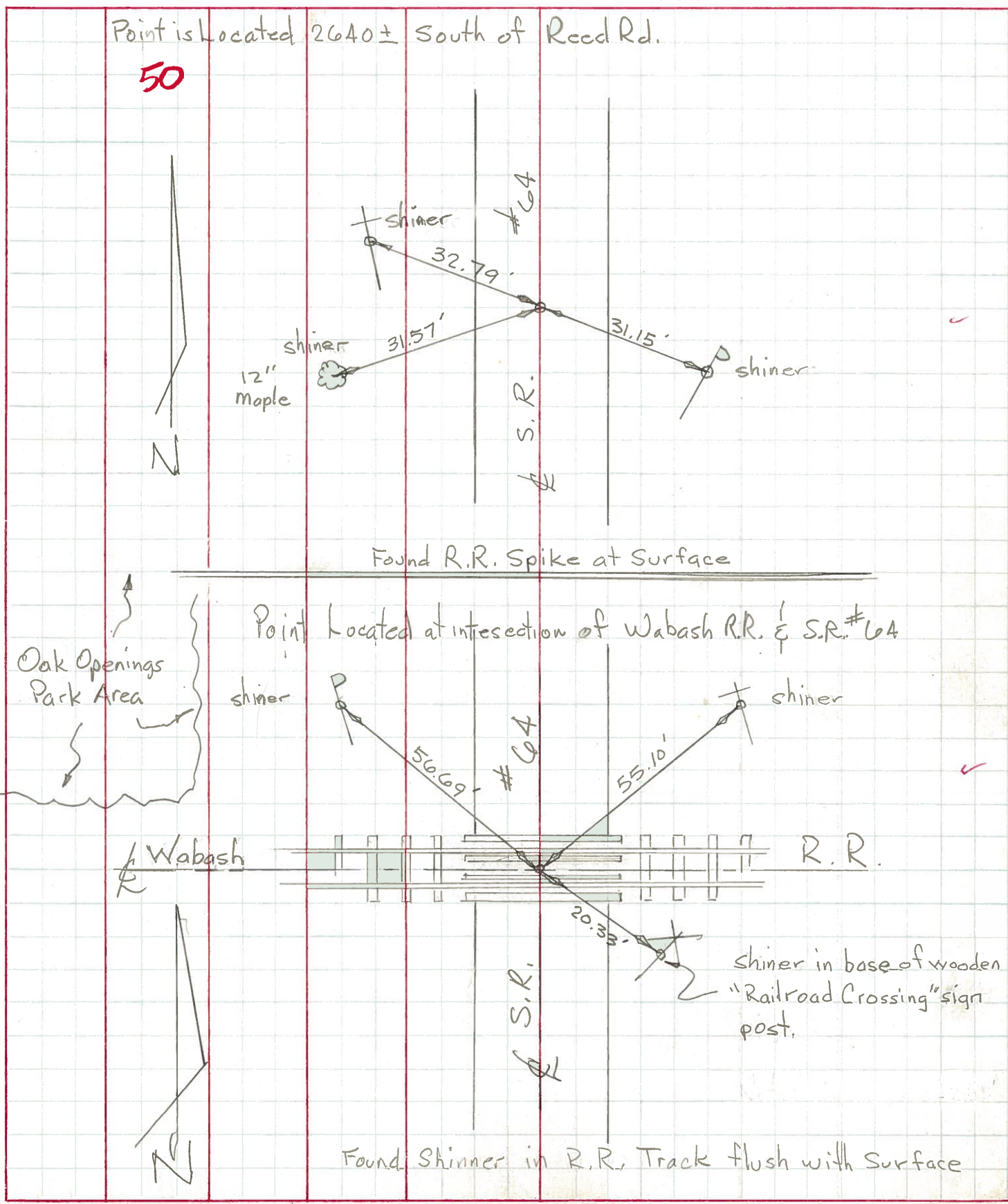
DESCRIPTION References to Central Points JOB NO. _____

LEFT CENTER LINE RIGHT



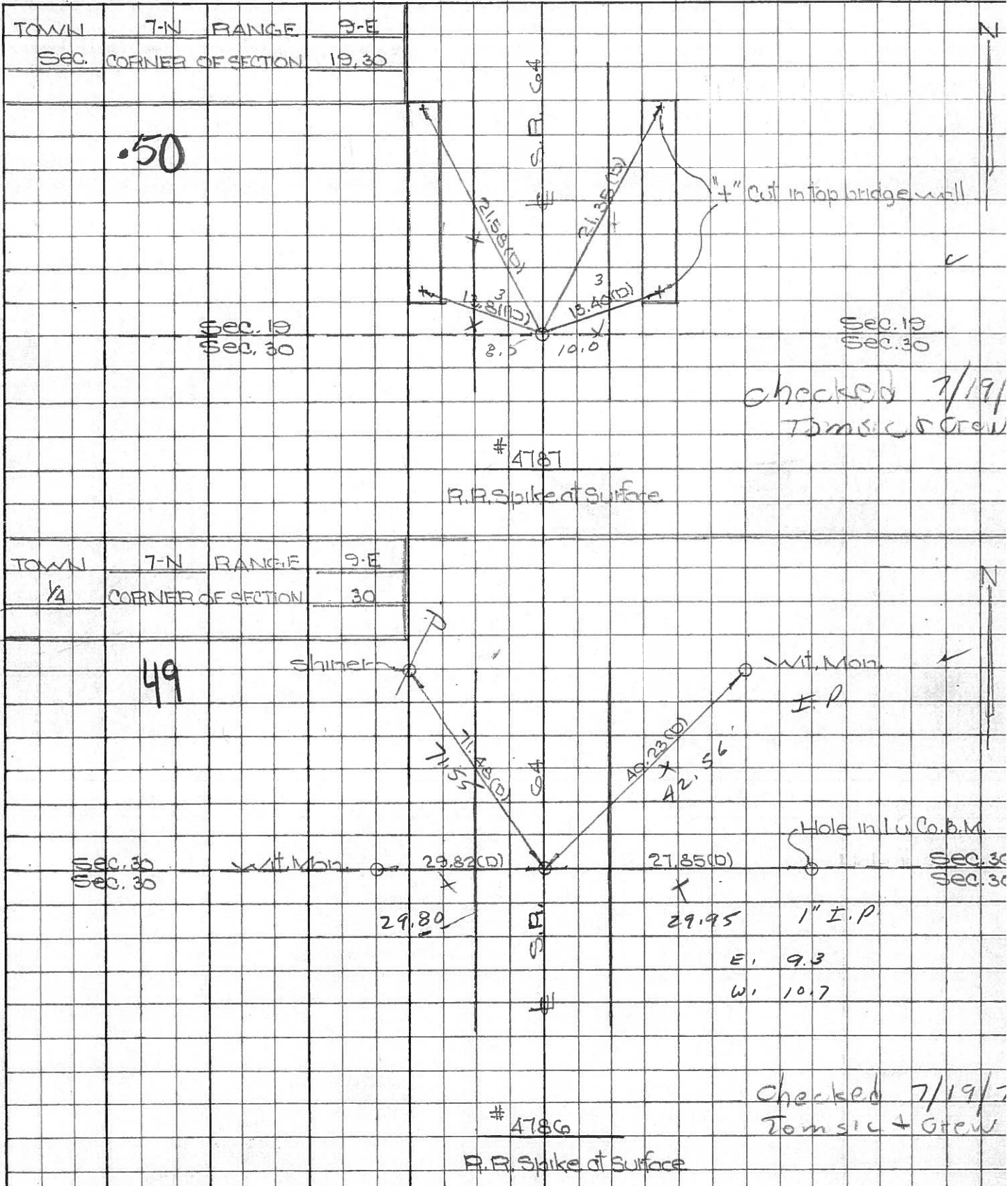
PERSONNEL	TITLE	PERSONNEL	TITLE	COUNTY	DATE	WEATHER	TEMP.
Tomsic				Lucas	July 22, 19	Fair	80°
Vanyo				S. R. #64			
Granata				SEC.			
Jackson							

DESCRIPTION Reference Monumenting S.R. #64



PERSONNEL TITLE PERSONNEL TITLE COUNTY Lucas DATE Aug. 19, 1904
 W. Dennis _____
 D. Curtis _____
 J. Teal _____
 J. Brindley _____
 S. R. C-4 WEATHER warm
 SEC. _____ TEMP. 85°±

DESCRIPTION S.R. C-4 - Ref. Mon. & Control Points JOB NO. 02994(1)



PERSONNEL TITLE PERSONNEL TITLE COUNTY Lucas DATE 4 Mar. 66
 Slone _____
 Beck _____ S. R. # 64 WEATHER Windy
 Brindley _____
 Schroder _____ SEC. N. From Sunshine Cons. TEMP. 78°

DESCRIPTION Rets. To Central Pts. JOB NO.

	LEFT	CENTER LINE	RIGHT	
#199	N. Line Sec. 30 Fd. R.R. Spk. To Surface	13.71'	E. To "+" on S.E. Cor. Bridge Wall	
		13.82'	W. To "+" on S.W. Cor. Bridge Wall	
		21.32'	N.E. To "+" on N.E. Cor. Bridge Wall	
		21.51'	N.W. To "+" on N.W. Cor. Bridge Wall	
#198	Int. Reel Rd. Fd. R.R. Spk. To Surface	44.02	S.W. To Con. Wit. Mon. (D)	
		40.91	S.E. Con Wit Mon. (D)	
		38.22	N.E. To Hole in Lu. Co. R.M. (D)	
		36.08	N.W. To Shiner in T.P. (D)	
#197	E & W. Sec. 19 Fd. R.R. Spk. To Surface	27.46'	W. To Con. Wit. Mon. (D)	
		43.98'	N.E. To Con. Wit. Mon. (D)	
		39.48'	S.E. To Con. Wit. Mon. (D)	
		34.77'	W.S.W. To Shiner in 8" Tree (D)	
#196	Between Wabash R.R. & Monclova Rds. Fd. R.R. Spk. To Surface	29.81'	W. S.W. To Shiner in T.P. (D)	
		29.87'	N.E. To Shiner in T.P. (D)	
		28.71'	E. To Con. Wit. Mon. (D)	
		36.75'	N.W. To Con. Wit. Mon. (D)	
#195	Into Monclova Rd. Fd. R.R. Spk. To Surface	35.56'	S.E. To "+" on Con. Head Wall (D)	
		37.30'	N.E. To "+" on Con. Head Wall (D)	
		37.07'	S.W. To Bottom of "V" in Lumber (D)	
		36.65'	N.W. To "+" on Con. Head Wall (D)	
#194	Between Monclova Rds. & E & W. Sec. 18 Could Not Find			