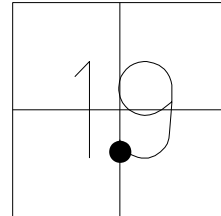


O.D.O.T. DISTRICT 2 SURVEY OFFICE (USE ONLY)

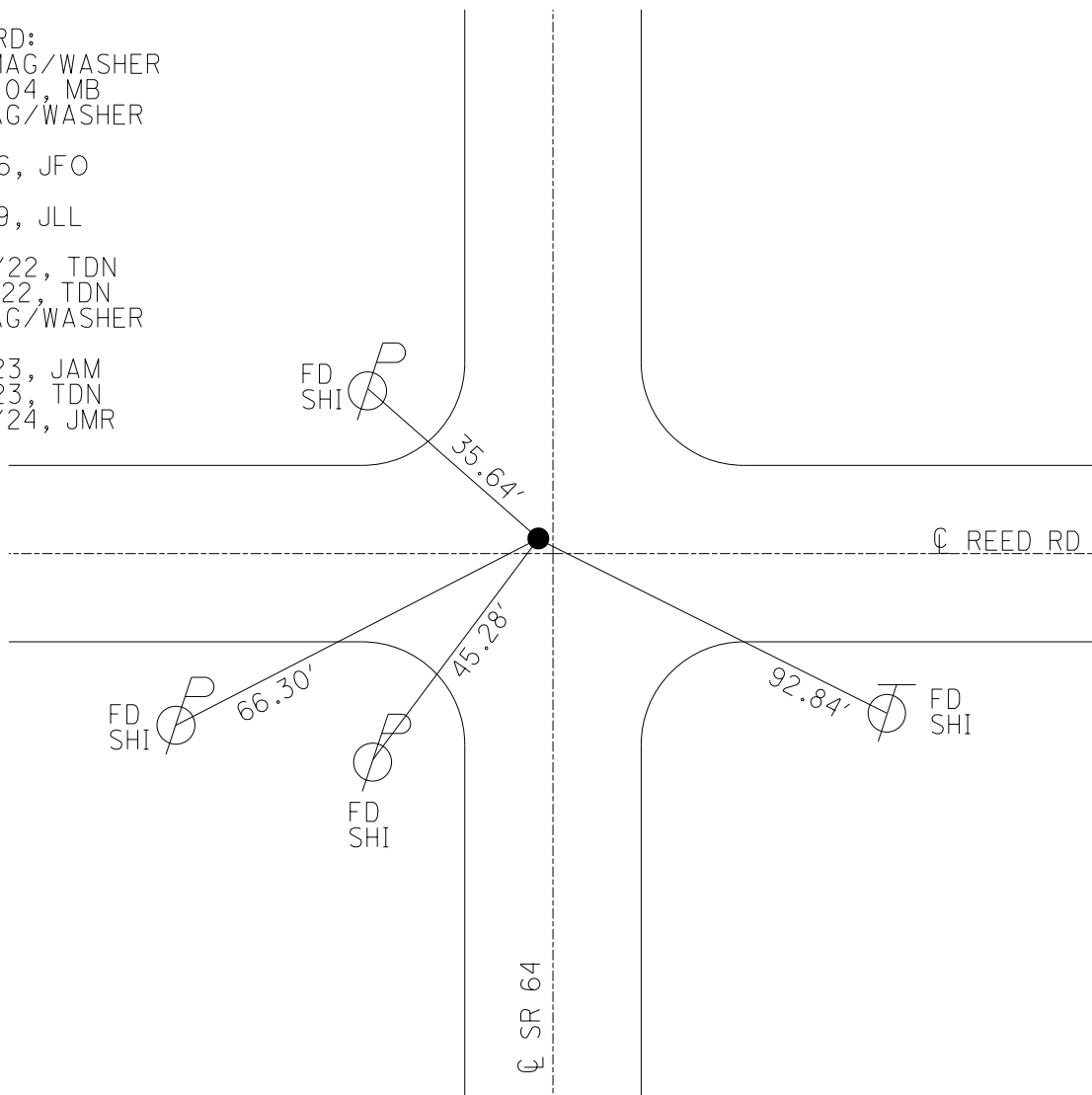
PERSONNEL _____ REFERENCE NO. 51 SHEET 50 OF 56
 NOTES NIESE DATE 5/9/23 ROUTE SR 64
 H.C. AUBLE WEATHER SUNNY COUNTY LUCAS
 R.C. ASTON TEMP. 60° TOWNSHIP WATERVILLE
 SECTION 19
 DWG BY RHOADES PID PAVING TRAIN T 7 N R 9 E

TYPE MONUMENT MAG/WASHER
 ON SURFACE - ~~BELOW~~ ON
 OFFSET ☉ PAVEMENT 1.2' LT : ~~RT~~
- TO - EDGE PAVEMENT
 STATION: 536+83.88



HORIZ.DATUM: NAD83 (2011) GEOID: NAVD88 2018
 GRID: NORTHING: 688772.742 EASTING: 1592617.302

RECORD:
 SET MAG/WASHER
 10-12-04, MB
 FD MAG/WASHER
 REF51
 1-15-16, JFO
 REF51
 6-6-19, JLL
 REF51
 8/23/22, TDN
 11/21/22, TDN
 FD MAG/WASHER
 REF51
 2/6/23, JAM
 5/9/23, TDN
 2/27/24, JMR



O.D.O.T. DISTRICT 2 SURVEY OFFICE (USE ONLY)

PERSONNEL

REFERENCE NO. 51

SHEET 50 OF 56

NOTES AUBLE DATE 5/7/20
 H.C. LEU WEATHER WINDY
 R.C. BALBAUGH TEMP. 66°

ROUTE SR 64
 COUNTY LUCAS
 TOWNSHIP WATERVILLE
 SECTION 19

DWG BY GARRETT PID 107059

T 7 N R 9 E

TYPE MONUMENT MAG/WASHER

ON SURFACE - ~~BELOW~~ ON

OFFSET \varnothing PAVEMENT 1.2' LT : ~~RT~~

- TO - EDGE PAVEMENT

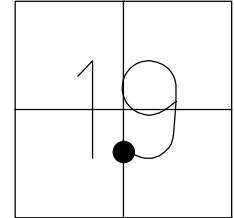
STATION: 536+83.88

HORZ.DATUM: NAD83 (2011)

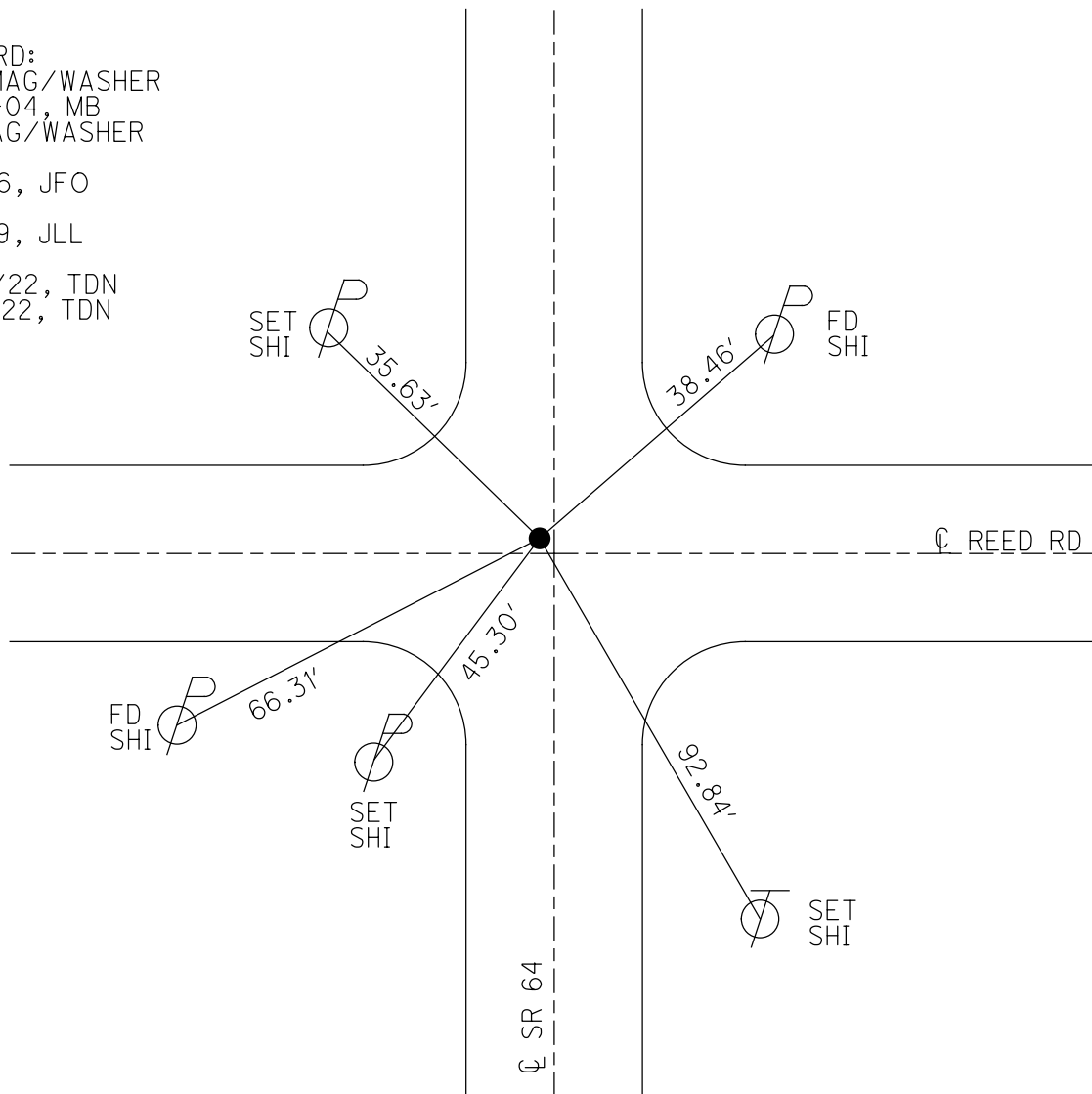
GEOID: 2012A

GRID: NORTHING: 688772.742

EASTING: 1592617.302



RECORD:
 SET MAG/WASHER
 10-12-04, MB
 FD MAG/WASHER
 REF51
 1-15-16, JFO
 REF51
 6-6-19, JLL
 REF51
 8/23/22, TDN
 11/21/22, TDN



O.D.O.T. DISTRICT 2 SURVEY OFFICE (USE ONLY)

PERSONNEL _____

REFERENCE NO. 51

SHEET 50 OF 56

NOTES AUBLE

DATE 5/7/20

ROUTE SR 64

H.C. LEU

WEATHER WINDY

COUNTY LUCAS

R.C. BALBAUGH

TEMP. 66°

TOWNSHIP WATERVILLE

DWG BY GARRETT PID 107059

SECTION 19

T 7 N R 9 E

TYPE MONUMENT MAG NAIL

ON SURFACE - ~~BELOW~~ ON

OFFSET ☐ PAVEMENT 1.2' LT : ~~RT~~

- TO - EDGE PAVEMENT

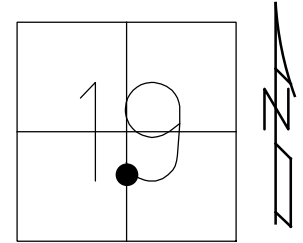
STATION: 536+83.88

HORIZ.DATUM: NAD83 (2011)

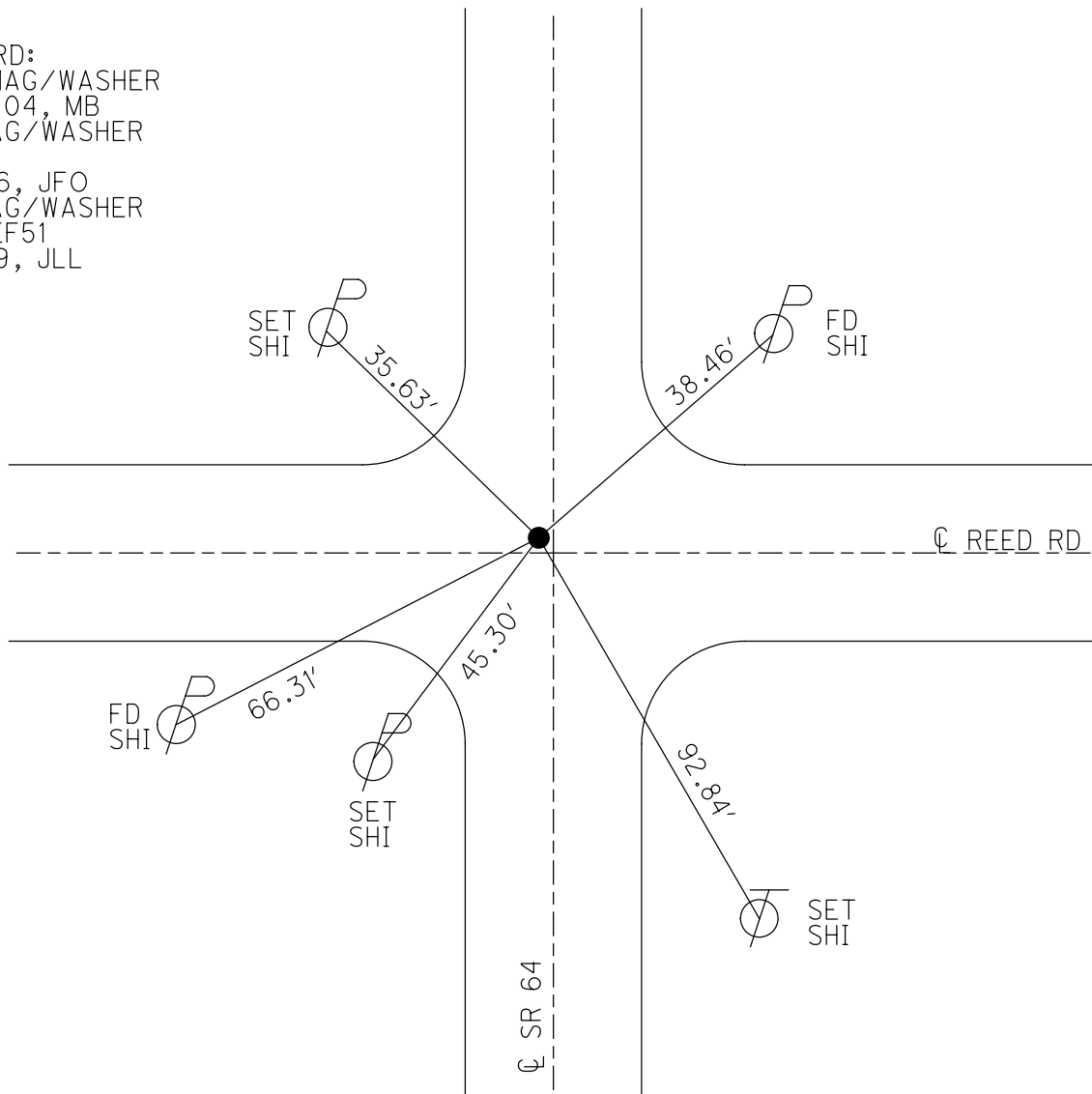
GEOID: 2012A

GRID: NORTHING: 688772.726

EASTING: 1592617.317



RECORD:
 SET MAG/WASHER
 10-12-04, MB
 FD MAG/WASHER
 REF51
 1-15-16, JFO
 FD MAG/WASHER
 RECRE51
 6-6-19, JLL

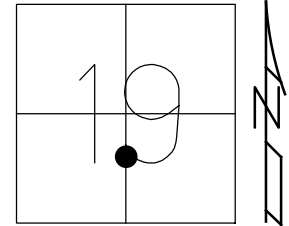


O.D.O.T. DISTRICT 2 SURVEY OFFICE (USE ONLY)

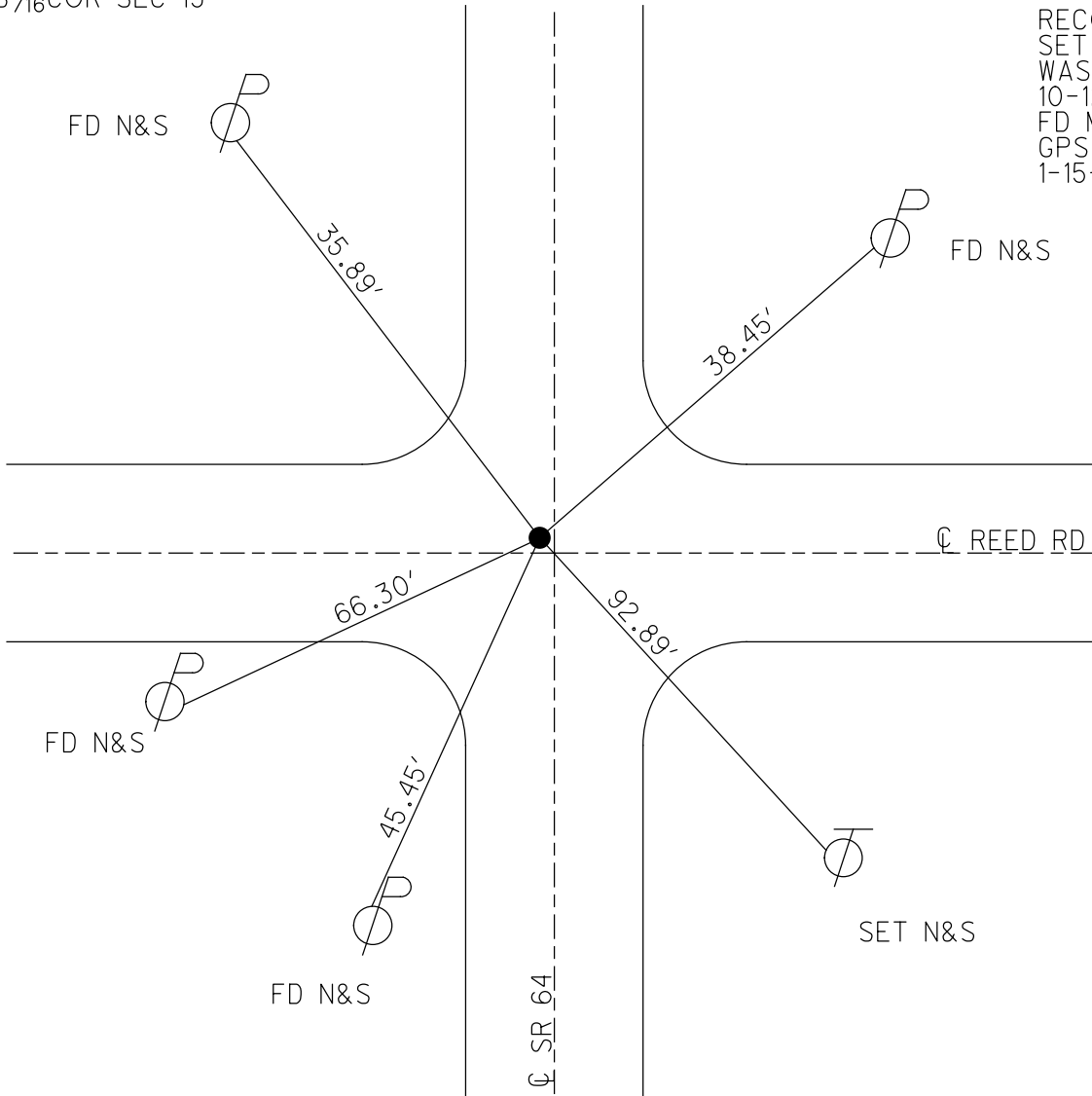
PERSONNEL _____ REFERENCE NO. 51 SHEET 50 OF 50
 NOTES HUSS DATE 6-16-04 ROUTE SR 64
 H.C. HOMAN WEATHER CLOUDY COUNTY LUCAS
 R.C. HUSS TEMP. 74° TOWNSHIP WATERVILLE
 _____ SECTION 19
 _____ T 7 N R 5 E

TYPE MONUMENT SM.R.R.SPIKE
 ON SURFACE - ~~BELOW~~ ON _____
 LEFT - ☉ PAV'T - ~~RIGHT~~ 1.2'
 _____ TO _____ EDGE PAVEMENT
 S.L.M. 537+68.45

Grid: Northing: 688772.726 Easting: 1592617.3174



S¹/₁₆COR SEC 19



RECORD:
 SET MAG NAIL &
 WASHER
 10-12-04, MB
 FD MAG/W
 GPS REF51
 1-15-16, JFO

O.D.O.T. DISTRICT 2 SURVEY OFFICE

PERSONNEL

REFERENCE NO. 51

SHEET 4 OF 10

NOTES HUSS

DATE 6-16-04

ROUTE SR 64

H.C. HOMAN

WEATHER CLOUDY

COUNTY LUCAS

R.C. HUSS

TEMP. 74°

TOWNSHIP SWANTON

SECTION 19

T 7 N R 5 E

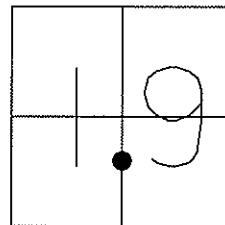
TYPE MONUMENT SM RR SPIKE

ON SURFACE ~~- BELOW~~ YES

LEFT ~~- C PART~~ ~~RIGHT~~ 1.2' LT

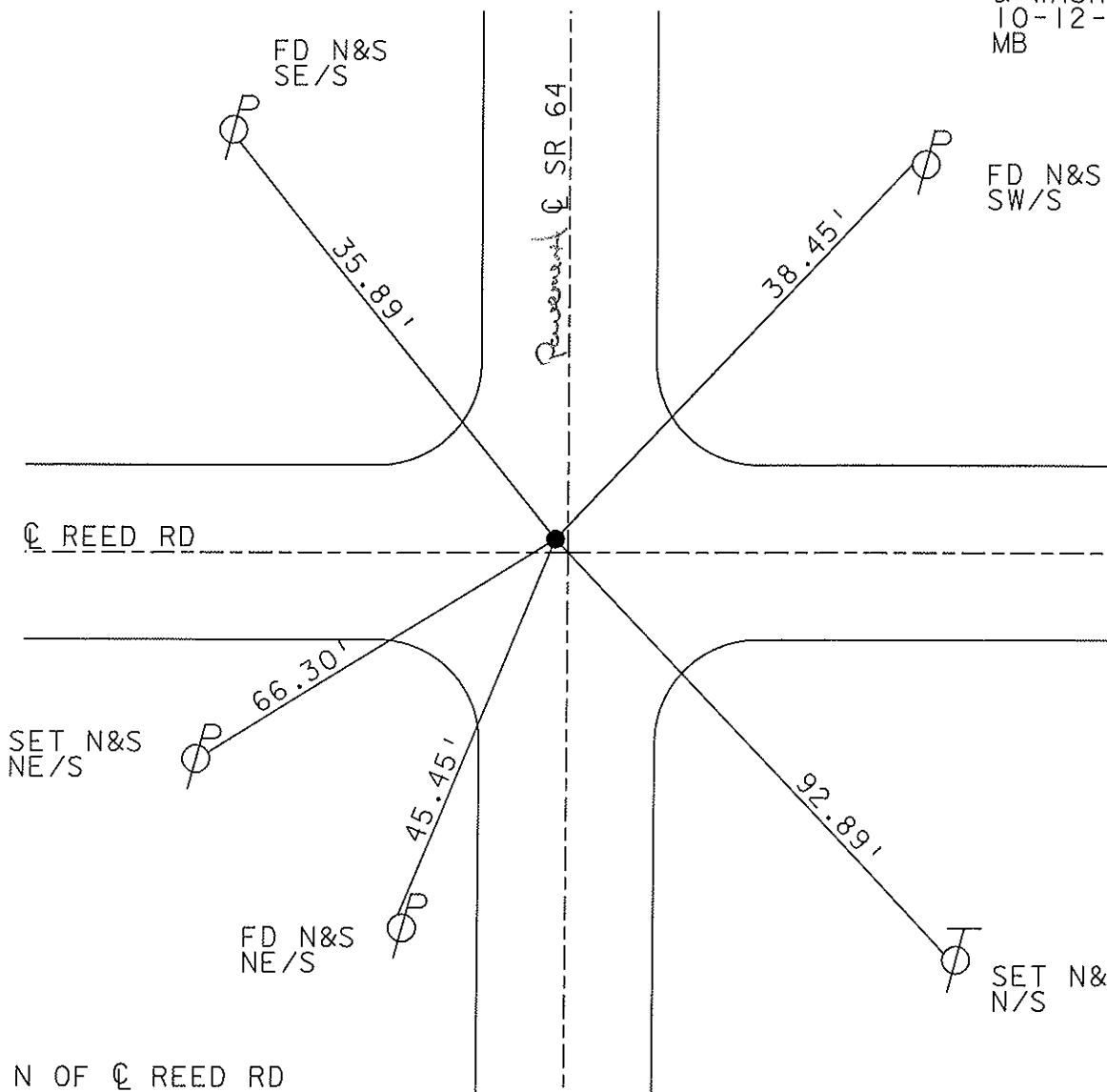
TO EDGE PAVEMENT

S.L.M. 537+48



S¹/₁₆ COR SEC 19

SET MAG NAIL
& WASHER
10-12-04
MB



1.5' N OF & REED RD

O.D.O.T. DISTRICT 2 SURVEY OFFICE

PERSONNEL _____

REFERENCE NO. 51

SHEET 4 OF 9

NOTES D. CURTIS

H.C. J. HOUSEHOLDER DATE 9-25-86

R.C. _____ WEATHER CLOUDY

_____ TEMP. 70°

ROUTE 64

COUNTY LUCAS

TOWNSHIP SWANTON

SECTION _____

T _____ R _____

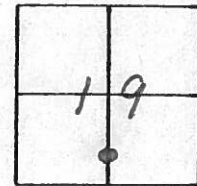
TYPE MONUMENT R. R. SPK.

ON SURFACE - BELOW 2" BELOW SURF.

LEFT- & PAV'T. - RIGHT & BOTH PAV'T

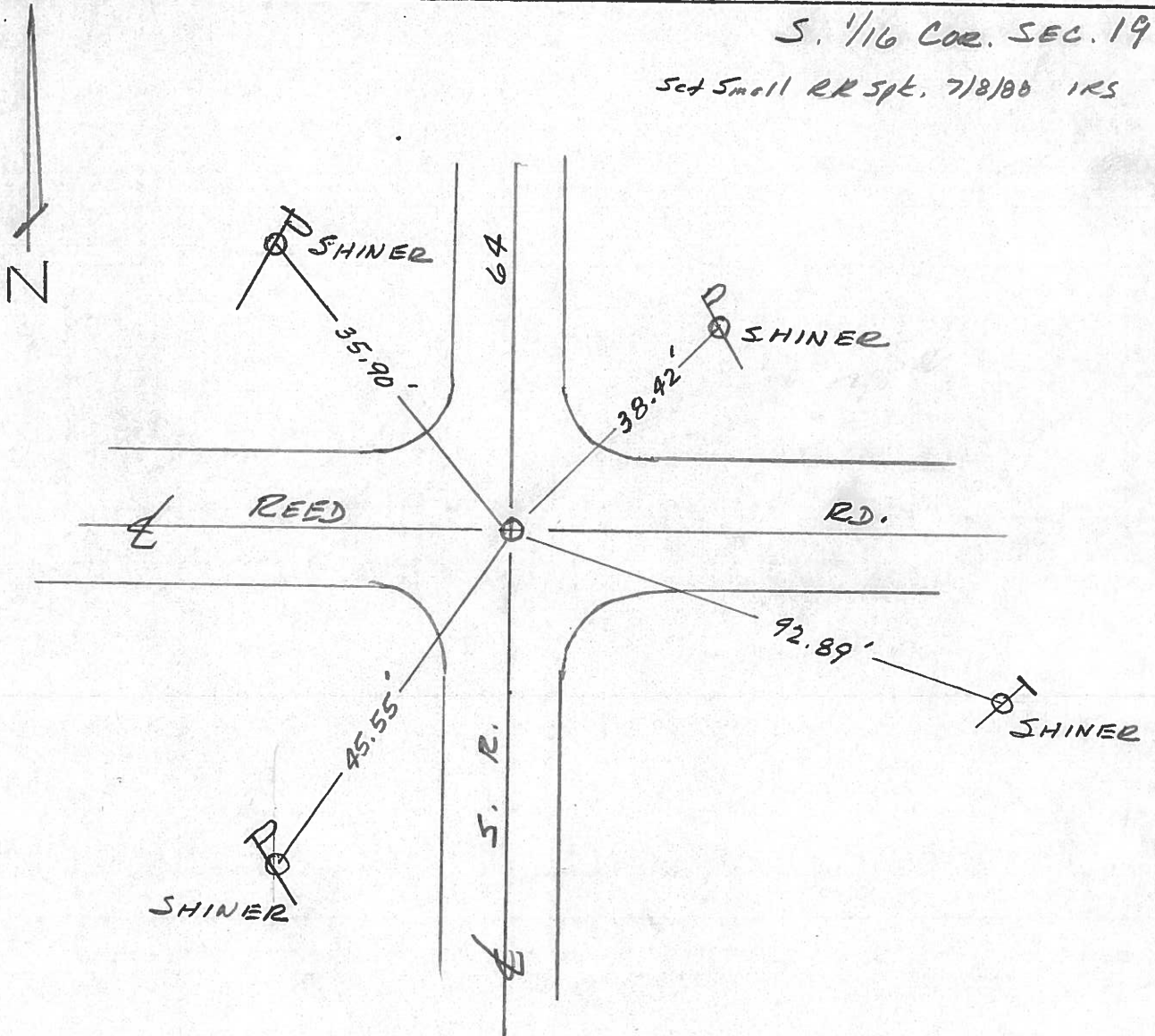
_____ TO _____ EDGE PAVEMENT

S.L.M. 537 + 48



S. 1/16 COR. SEC. 19

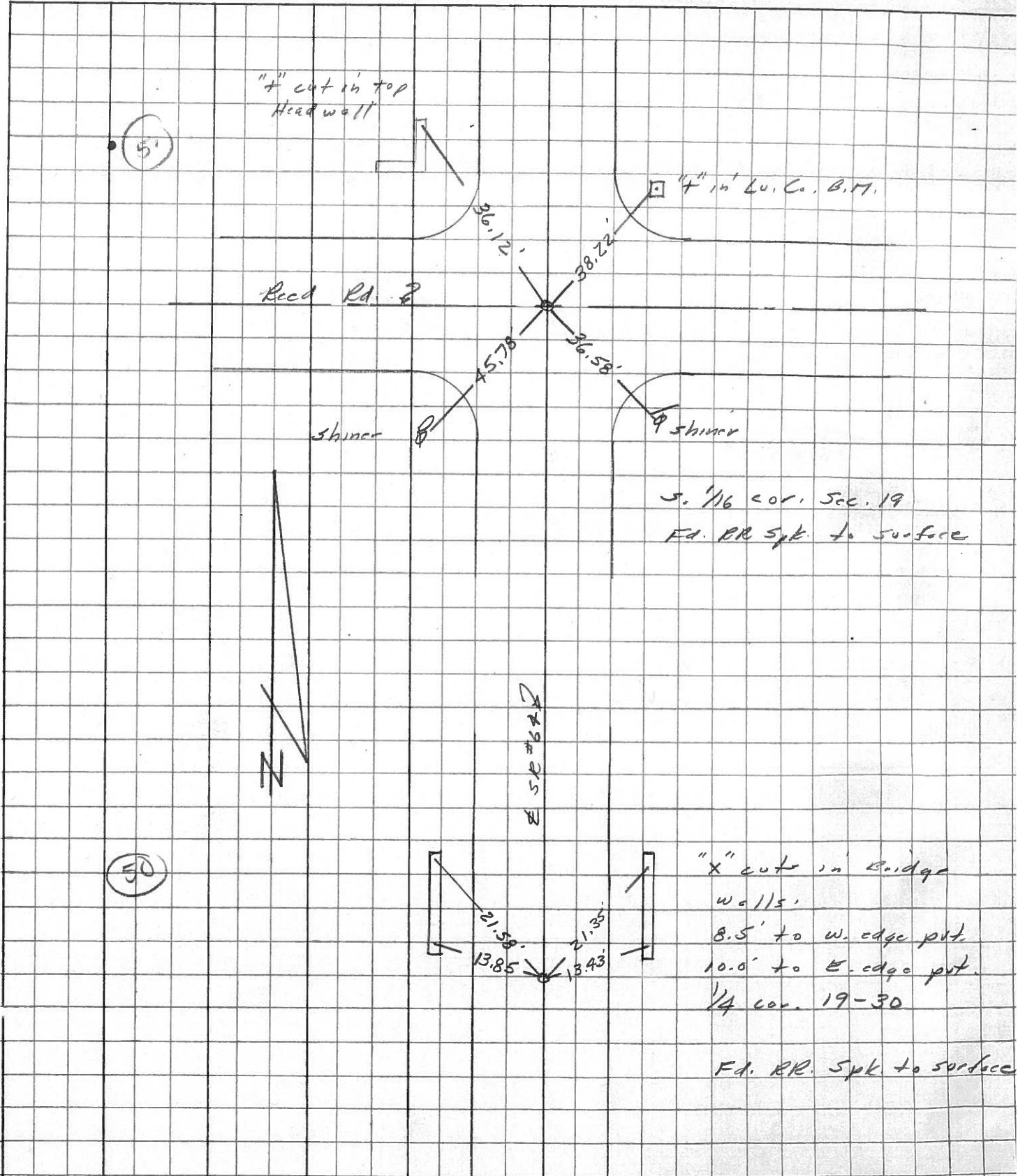
Set Small RR Spk. 7/8/88 IRS



PERSONNEL	TITLE	PERSONNEL	TITLE	COUNTY	DATE	WEATHER	TEMP.
Stone		Grandy		Lucas	17 Mar. 7	Cool	49°
Michalak				S. R. 64			
Neusco				SEC.			
Curtis							

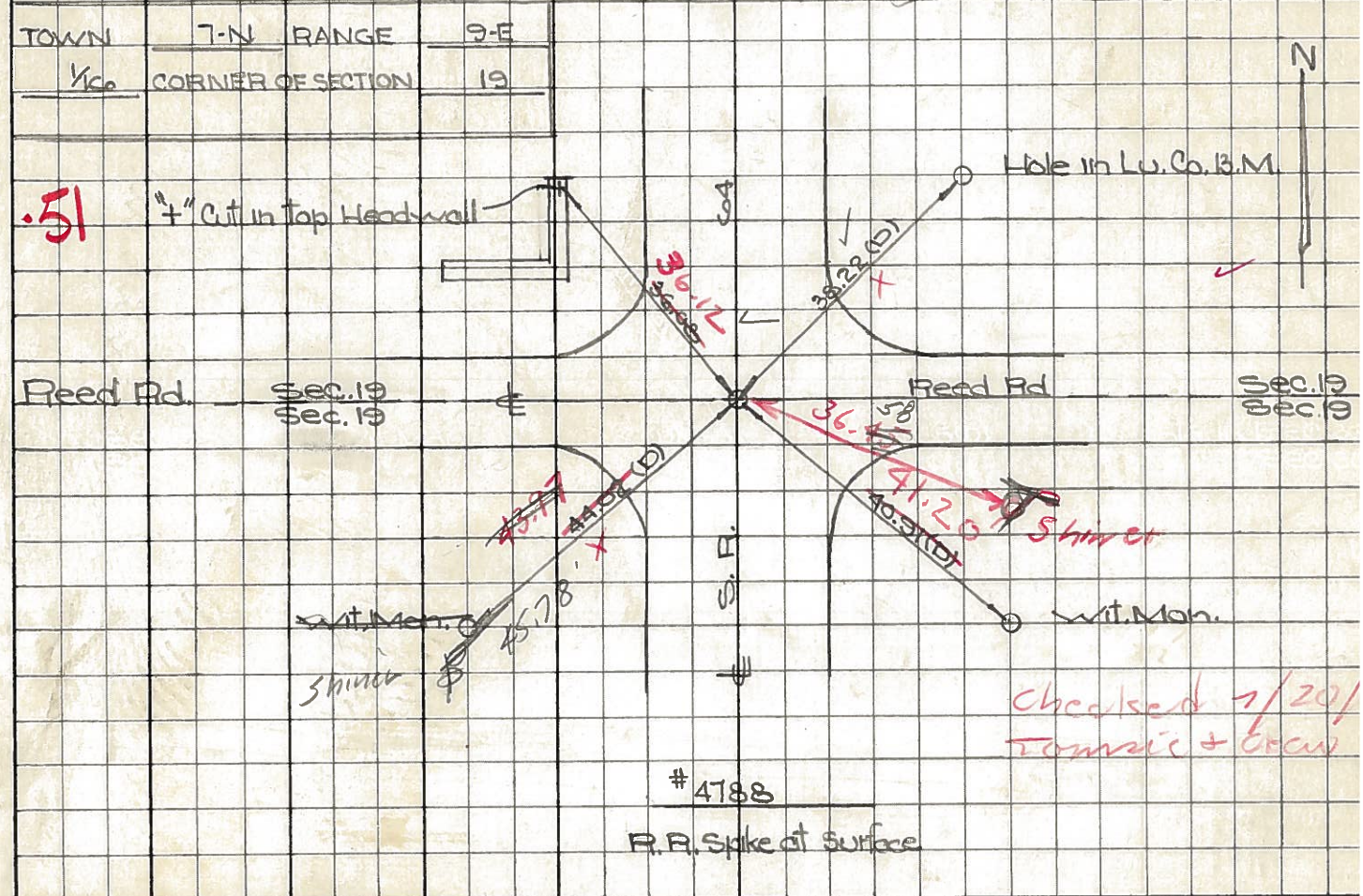
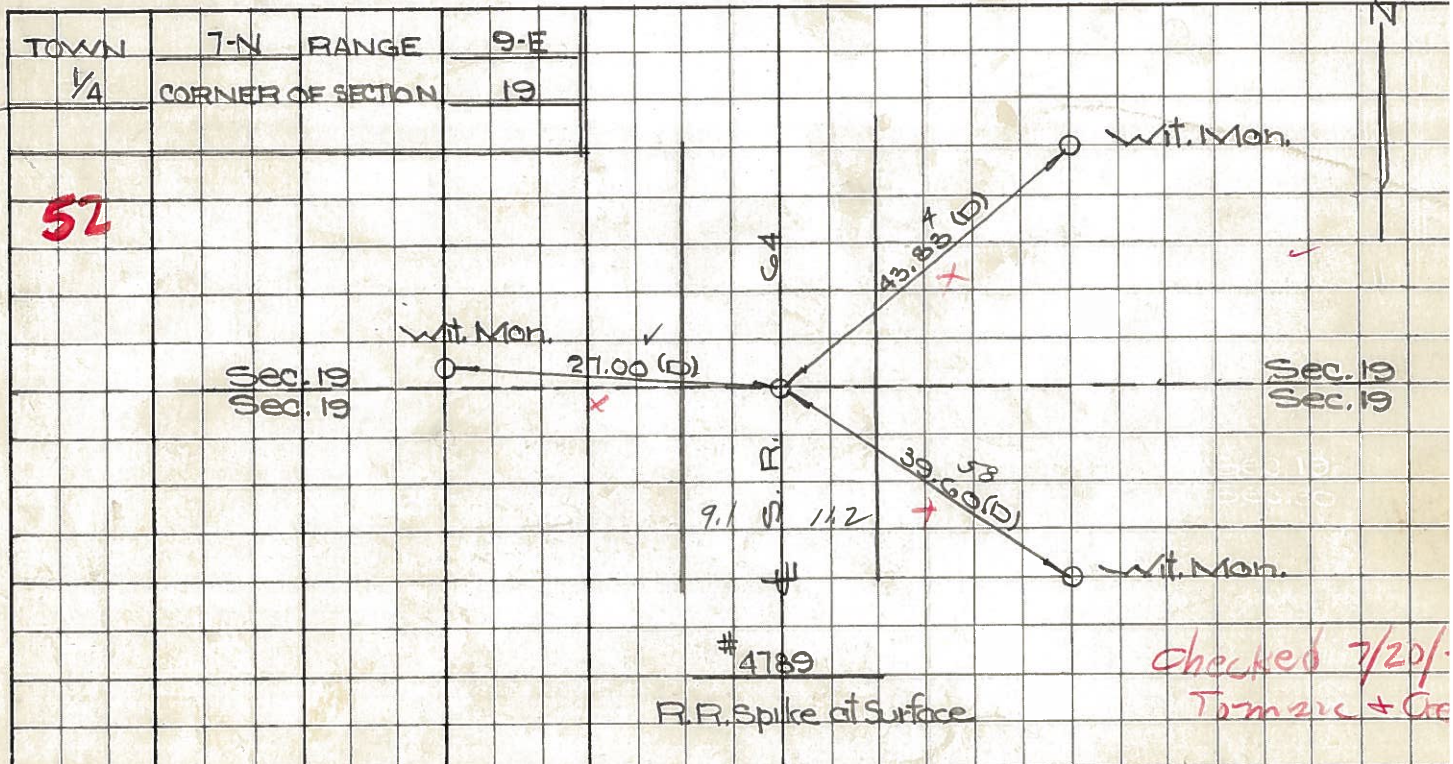
DESCRIPTION References to Control Points JOB NO.

LEFT CENTER LINE RIGHT



PERSONNEL TITLE PERSONNEL TITLE COUNTY Lucas DATE Aug. 19, 1966
 W. Denno _____
 D. Curtis _____ S. R. C64 WEATHER warm
 J. Teal _____ SEC. _____ TEMP. 85°±
 J. Brindley _____

DESCRIPTION S.R. C64 - Ref. Mon. & Control Points JOB NO. 02994(9)



PERSONNEL TITLE PERSONNEL TITLE COUNTY Lucas DATE 4 Mar. 66
 Slone _____
 Beck _____ S. R. #64 WEATHER Windy
 Brindley _____
 Schroder _____ SEC. N. From Sunshine Cons. TEMP. 78°

DESCRIPTION Rets. To Central Pts. JOB NO.

	LEFT	CENTER LINE	RIGHT	
#199	N. Line Sec. 30 Fd. R.R. Spk. To Surface	13.71'	E. To "+" on S.E. Cor. Bridge Wall	
		13.82'	W. To "+" on S.W. Cor. Bridge Wall	
		21.32'	N.E. To "+" on N.E. Cor. Bridge Wall	
		21.51'	N.W. To "+" on N.W. Cor. Bridge Wall	
#198	Int. Reel Rd. Fd. R.R. Spk. To Surface	44.02	S.W. To Con. Wit. Mon. (D)	
		40.91	S.E. Con Wit Mon. (D)	
		38.22	N.E. To Hole in Lu. Co. R.M. (D)	
		36.08	N.W. To Hole in T.P. (D)	
			N.W. "+" Cut in top Headwall	
#197	E & W. Sec. 19 Fd. R.R. Spk. To Surface	27.46'	W. To Con. Wit. Mon. (D)	
		43.98'	N.E. To Con. Wit. Mon. (D)	
		39.48'	S.E. To Con. Wit. Mon. (D)	
		34.77'	W.S.W. To Shiner in 8" Tree (D)	
#196	Between Wabash R.R. & Monclova Rds. Fd. R.R. Spk. To Surface	29.81'	W. S.W. To Shiner in T.P. (D)	
		29.87'	N.E. To Shiner in T.P. (D)	
		28.71'	E. To Con. Wit. Mon. (D)	
		36.75'	N.W. To Con. Wit. Mon. (D)	
#195	Into Monclova Rd. Fd. R.R. Spk. To Surface	35.56'	S.E. To "+" on Con. Head Wall (D)	
		39.30' OK	N.E. To "+" on Con. Head Wall (D)	
		37.07'	S.W. To Bottom of "V" in Lu. Co. R.M. (D)	
		38.65'	N.W. To "+" on Con. Head Wall (D)	
#194	Between Monclova Rds. & E & W. Sec. 18 Could Not Find			