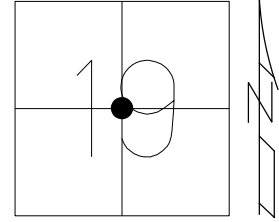


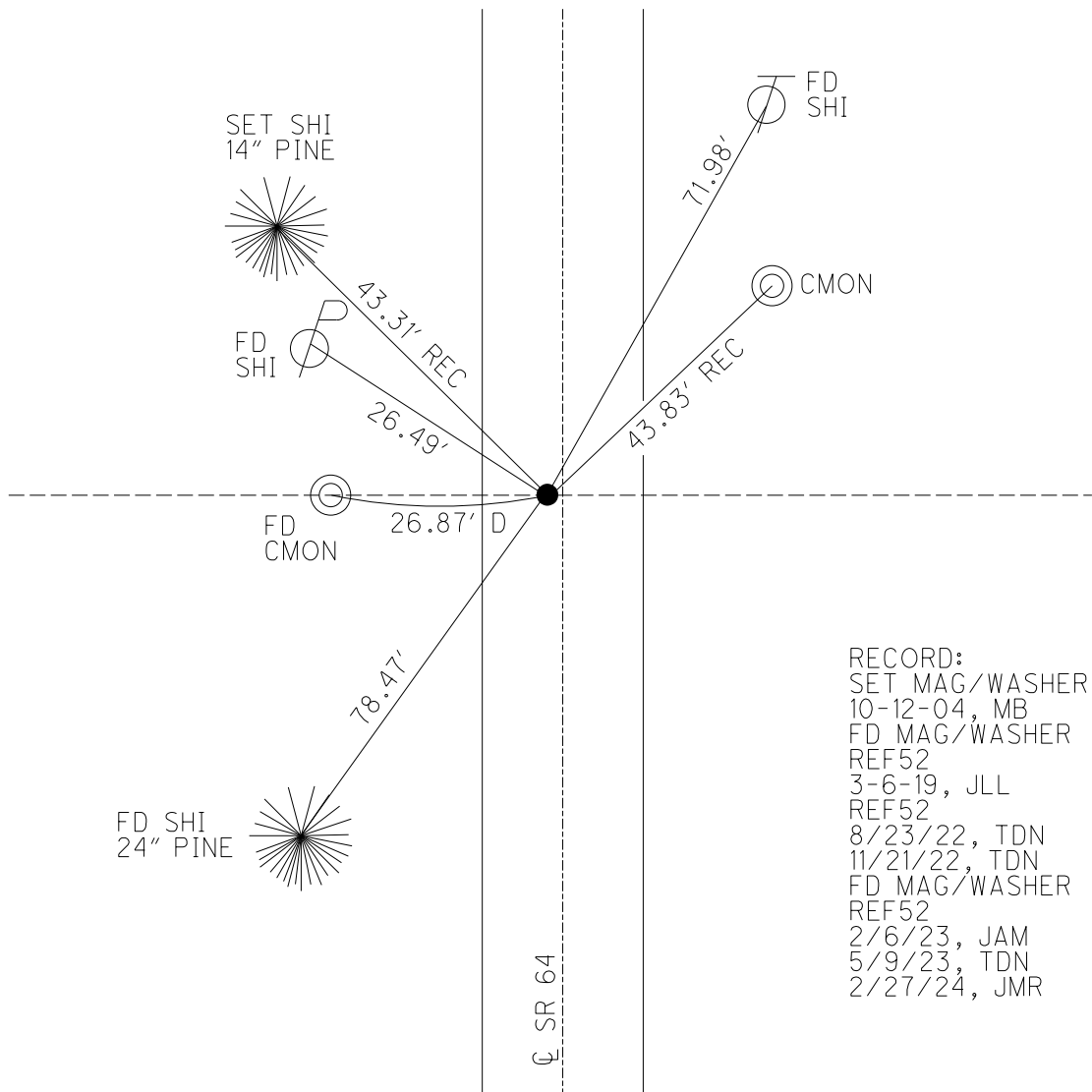
O.D.O.T. DISTRICT 2 SURVEY OFFICE (USE ONLY)

PERSONNEL \_\_\_\_\_ REFERENCE NO. 52 SHEET 51 OF 56  
 NOTES NIESE DATE 5/9/23 ROUTE SR 64  
 H.C. AUBLE WEATHER SUNNY COUNTY LUCAS  
 R.C. ASTON TEMP. 60° TOWNSHIP SWANTON  
 DWG BY RHOADES PID PAVING TRAIN SECTION 19  
 T 7 N R 9 E

TYPE MONUMENT MAG/WASHER  
 ON SURFACE - ~~BELOW~~ ON  
 OFFSET Q PAVEMENT 1.5' LT : ~~RT~~  
8.8' TO LT EDGE PAVEMENT  
 STATION: 550+06.39



HORZ. DATUM: NAD83 (2011) GEOID: NAVD88 2018  
 GRID: NORTHING: 690094.953 EASTING: 1592644.632



RECORD:  
 SET MAG/WASHER  
 10-12-04, MB  
 FD MAG/WASHER  
 REF52  
 3-6-19, JLL  
 REF52  
 8/23/22, TDN  
 11/21/22, TDN  
 FD MAG/WASHER  
 REF52  
 2/6/23, JAM  
 5/9/23, TDN  
 2/27/24, JMR

O.D.O.T. DISTRICT 2 SURVEY OFFICE (USE ONLY)

PERSONNEL \_\_\_\_\_ REFERENCE NO. 52 SHEET 51 OF 56  
 NOTES AUBLE DATE 5/7/20 ROUTE SR 64  
 H.C. LEU WEATHER WINDY COUNTY LUCAS  
 R.C. BALBAUGH TEMP. 66° TOWNSHIP SWANTON  
 DWG BY GARRETT PID 107059 SECTION 19  
 T 7 N R 9 E

TYPE MONUMENT MAG/WASHER

ON SURFACE - ~~BELOW~~ ON \_\_\_\_\_

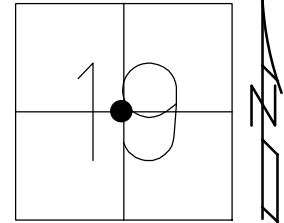
OFFSET ☐ PAVEMENT 1.5' LT : ~~RT~~

8.8' TO LT EDGE PAVEMENT

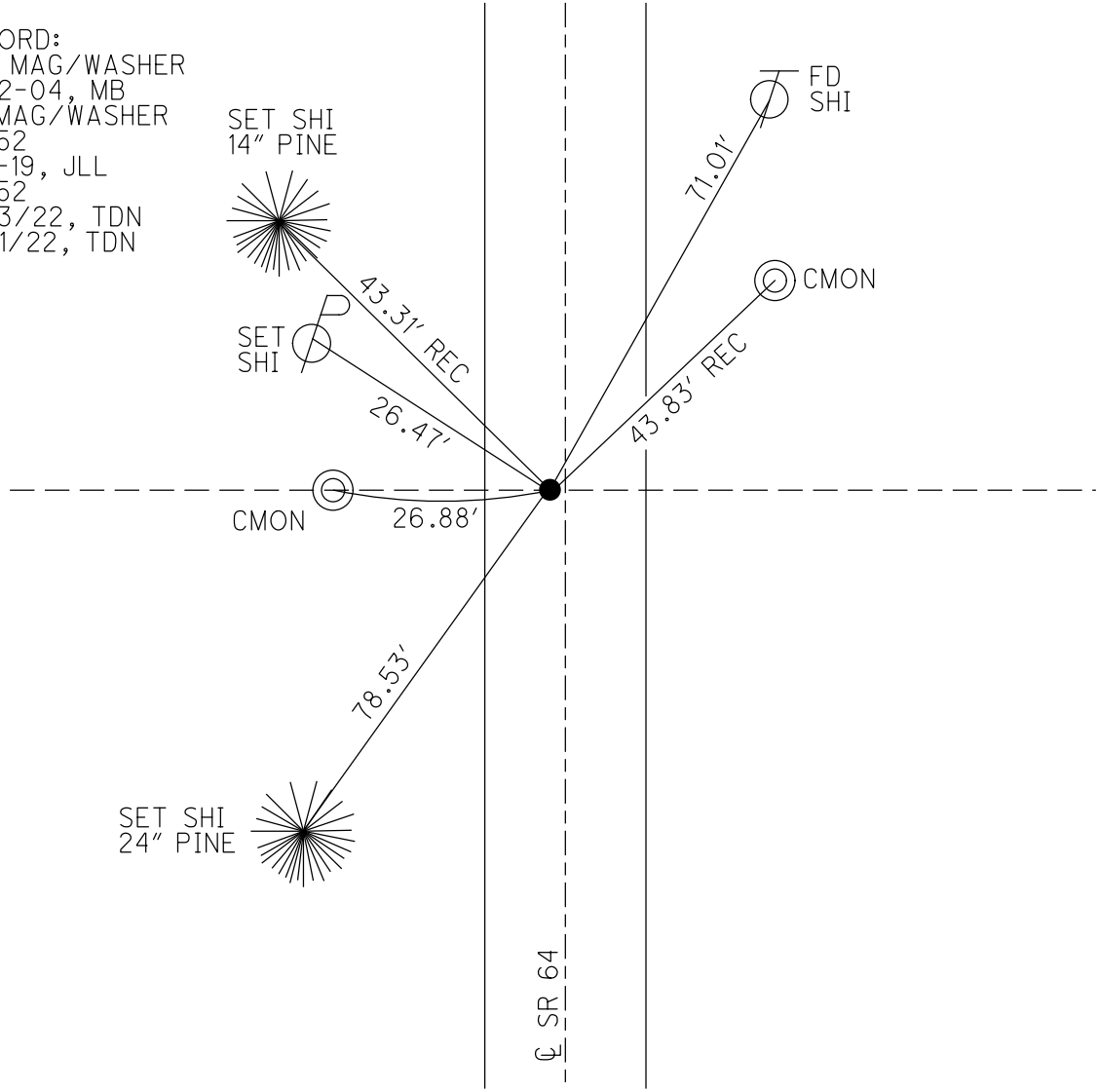
STATION: 550+06.39

HORIZ.DATUM: NAD83 (2011) GEOID: 2012A

GRID: NORTHING: 690094.953 EASTING: 1592644.632



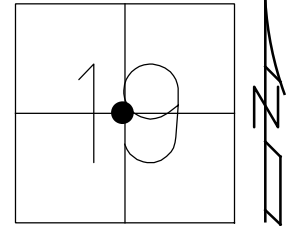
RECORD:  
 SET MAG/WASHER  
 10-12-04, MB  
 FD MAG/WASHER  
 REF52  
 3-6-19, JLL  
 REF52  
 8/23/22, TDN  
 11/21/22, TDN



O.D.O.T. DISTRICT 2 SURVEY OFFICE (USE ONLY)

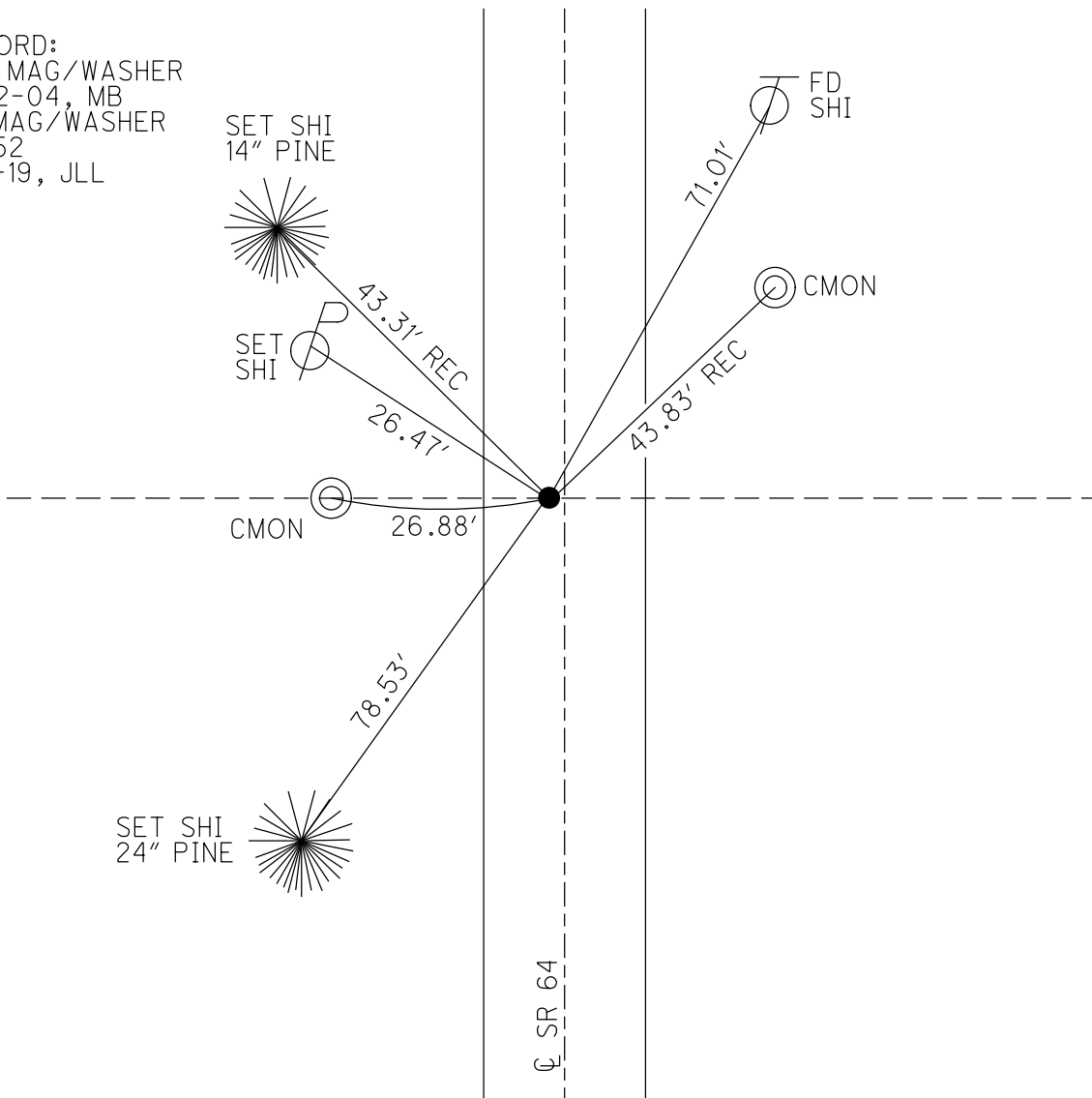
PERSONNEL \_\_\_\_\_ REFERENCE NO. 52 SHEET 51 OF 56  
 NOTES AUBLE DATE 5/7/20 ROUTE SR 64  
 H.C. LEU WEATHER WINDY COUNTY LUCAS  
 R.C. BALBAUGH TEMP. 66° TOWNSHIP SWANTON  
 DWG BY GARRETT PID 107059 SECTION 19  
 T 7 N R 9 E

TYPE MONUMENT MAG/WASHER  
 ON SURFACE - ~~BELOW~~ ON \_\_\_\_\_  
 OFFSET  $\odot$  PAVEMENT 1.5' LT : ~~RT~~  
8.8' TO LT EDGE PAVEMENT  
 STATION: 550+06.39



HORZ.DATUM: NAD83 (2011) GEOID: 2012A  
 GRID: NORTHING: 690094.953 EASTING: 159264.632

RECORD:  
 SET MAG/WASHER  
 10-12-04, MB  
 FD MAG/WASHER  
 REF52  
 3-6-19, JLL



O.D.O.T. DISTRICT 2 SURVEY OFFICE

PERSONNEL

REFERENCE NO. 52

SHEET 5 OF 10

NOTES HUSS

DATE 6-16-04

ROUTE SR 64

H.C. HOMAN

WEATHER CLOUDY

COUNTY LUCAS

R.C. HUSS

TEMP. 78°

TOWNSHIP SWANTON

SECTION 19

T 7 N R 9 E

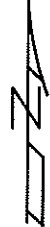
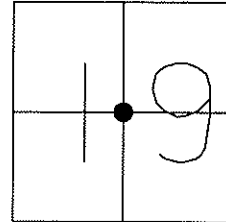
TYPE MONUMENT PK NAIL & WASHER

ON SURFACE - ~~BELOW~~ YES

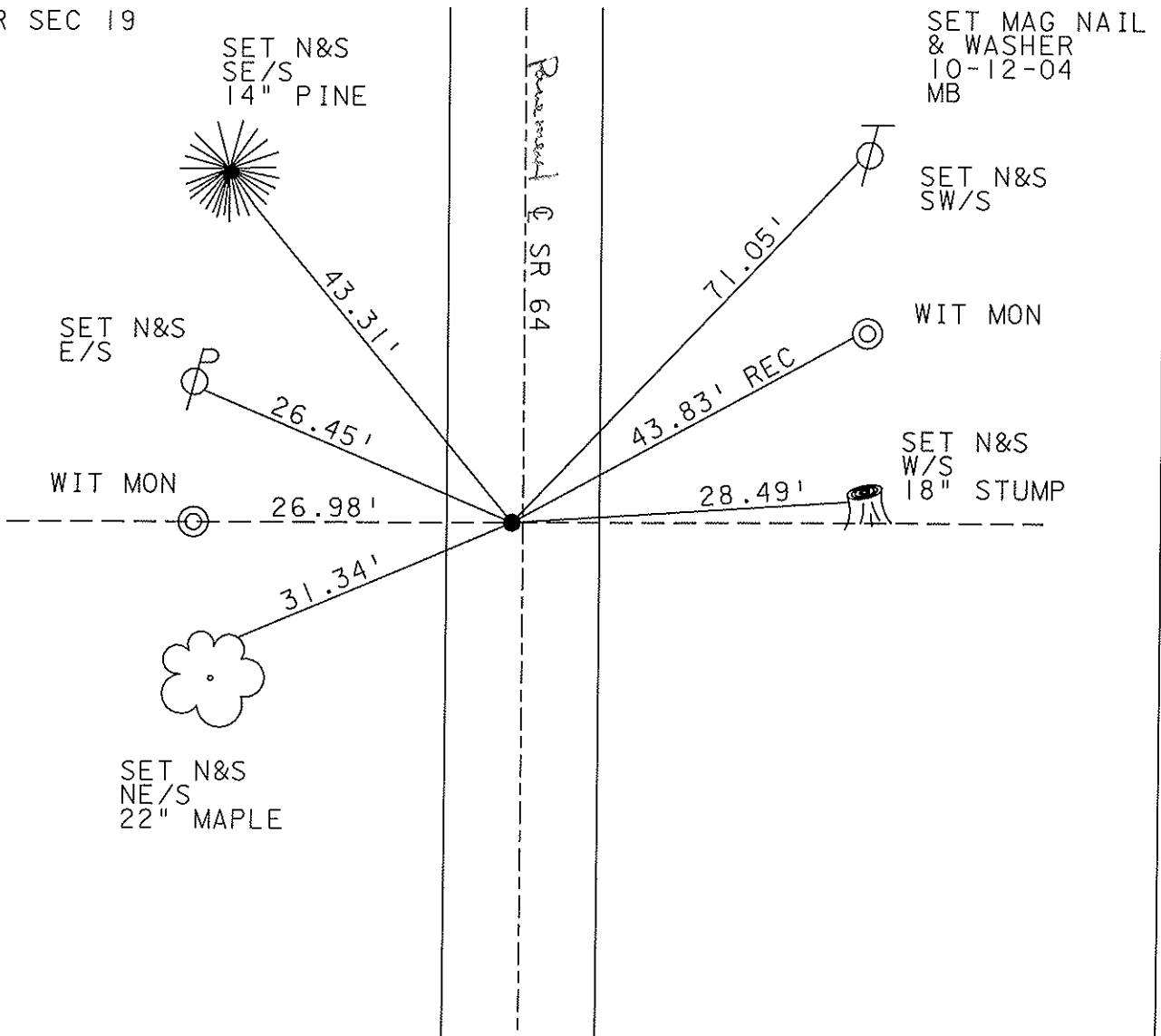
LEFT - ~~PAVT~~ ~~RIGHT~~ 1.5' LT

8.8 TO LT EDGE PAVEMENT

S.L.M. 550+70



CTR SEC 19



O.D.O.T. DISTRICT 2 SURVEY OFFICE

PERSONNEL \_\_\_\_\_

REFERENCE NO. 52

SHEET 5 OF 9

NOTES D. CURTIS

H.C. J. HOUSEHOLDER DATE 9-25-86

R.C. \_\_\_\_\_ WEATHER CLOUDY

\_\_\_\_\_ TEMP. 70°

ROUTE 64

COUNTY LUCAS

TOWNSHIP SWANTON

SECTION \_\_\_\_\_

T \_\_\_\_\_ R \_\_\_\_\_

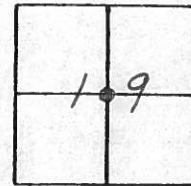
TYPE MONUMENT P.K. NAIL

ON SURFACE - BELOW ON SURFACE

LEFT - ¢ PAV'T. - RIGHT 1' - LT' & PAVM'T

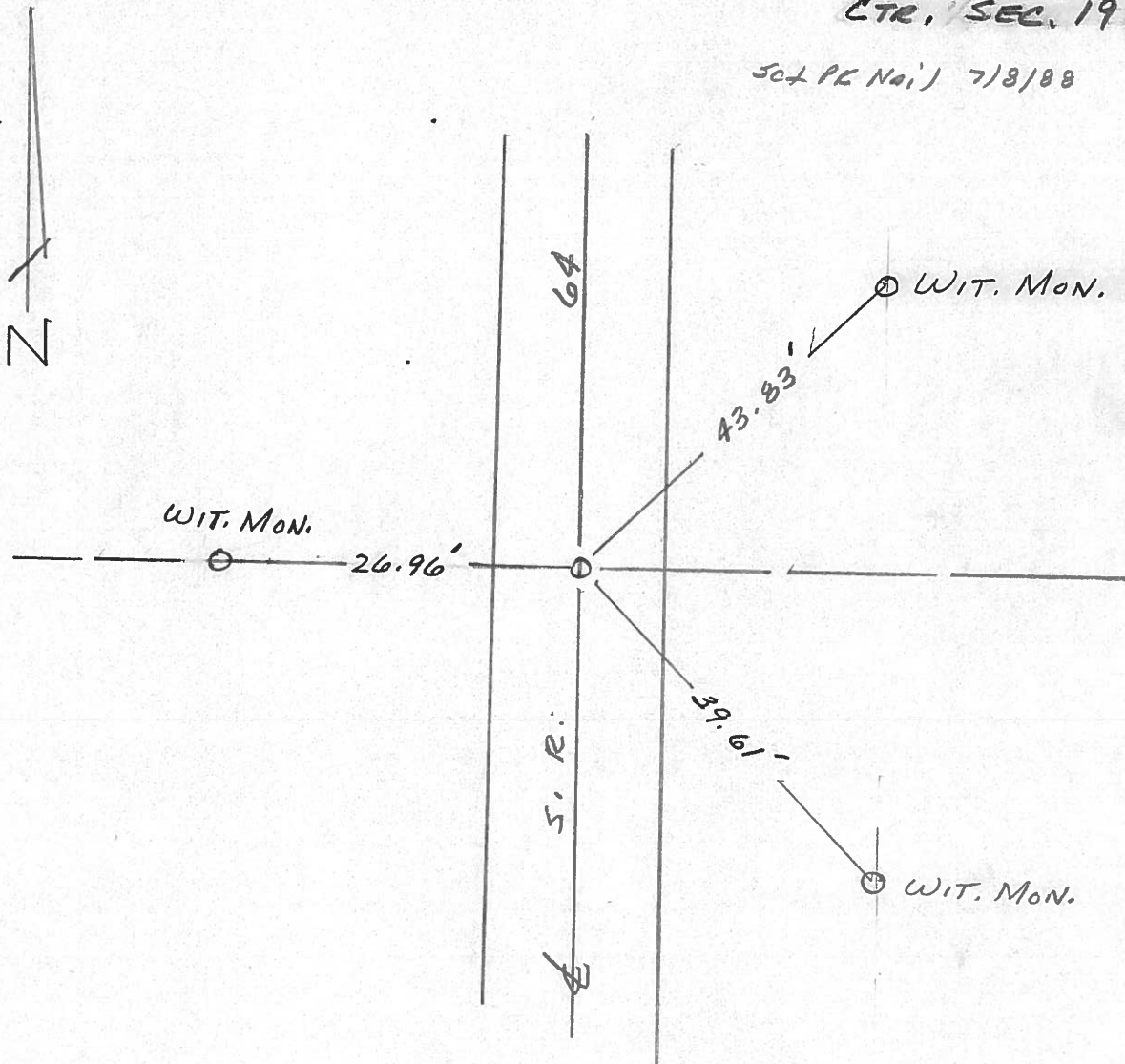
\_\_\_\_\_ TO \_\_\_\_\_ EDGE PAVEMENT

S.L.M. 550 + 70



CTR. SEC. 19

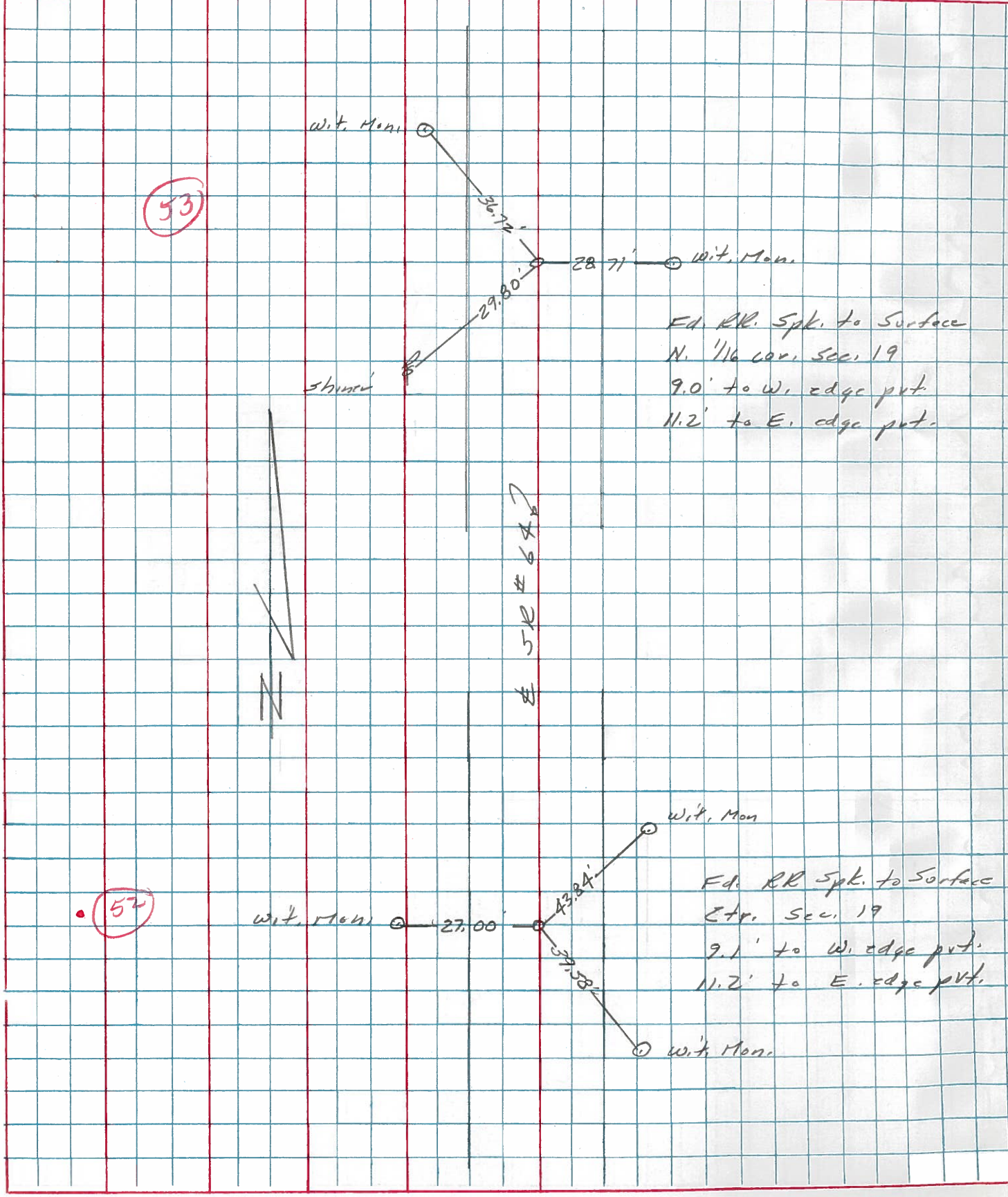
Set PK Nail 7/9/88 IRS



PERSONNEL	TITLE	PERSONNEL	TITLE
Stone			
E			
Crew			

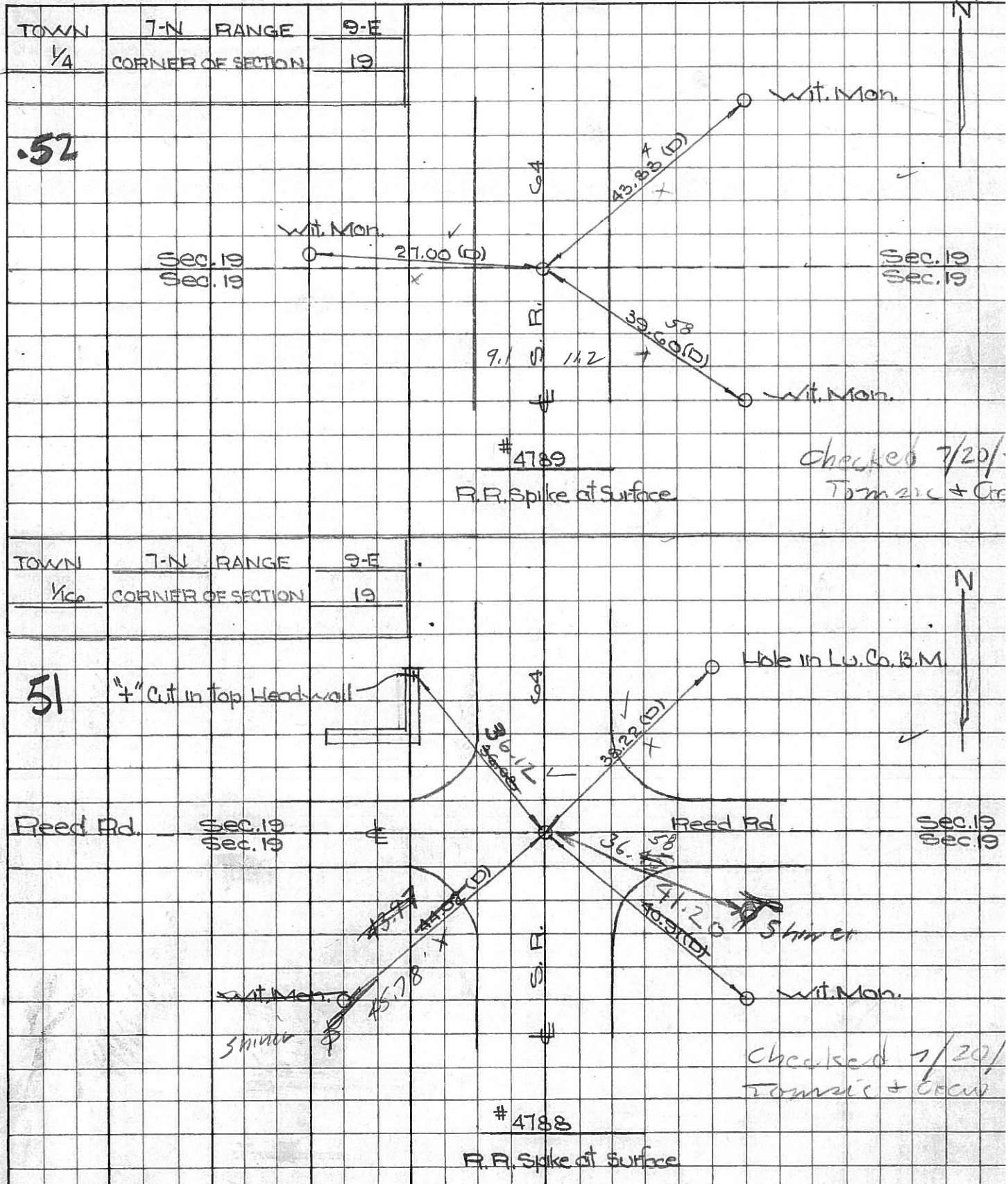
COUNTY Lucas DATE 21 March 7  
 S. R. 64 WEATHER Cold  
 SEC. \_\_\_\_\_ TEMP. 32°

DESCRIPTION References to Control Points JOB NO. \_\_\_\_\_  
 LEFT CENTER LINE RIGHT



PERSONNEL TITLE PERSONNEL TITLE COUNTY Lucas DATE Aug. 19, 1960  
 W. Dennis \_\_\_\_\_  
 D. Curtis \_\_\_\_\_ S. R. C64 WEATHER warm  
 J. Teal \_\_\_\_\_  
 J. Brindley \_\_\_\_\_ SEC. \_\_\_\_\_ TEMP. 85°±

DESCRIPTION S.R. C64 - Ref. Mon. & Control Points JOB NO. 02994(0)



PERSONNEL TITLE PERSONNEL TITLE COUNTY Lucas DATE 4 Mar. 66  
 Slone \_\_\_\_\_  
 Beck \_\_\_\_\_ S. R. # 64 WEATHER Windy  
 Brindley \_\_\_\_\_  
 Schroder \_\_\_\_\_ SEC. N. From Sunshine Cons. TEMP. 78°

DESCRIPTION Rets. To Central Pts. JOB NO.

	LEFT	CENTER LINE	RIGHT	
#199	N. Line Sec. 30 Fd. R.R. Spk. To Surface	13.71'	E. To "+" on S.E. Cor. Bridge Wall	
		13.82'	W. To "+" on S.W. Cor. Bridge Wall	
		21.32'	N.E. To "+" on N.E. Cor. Bridge Wall	
		21.51'	N.W. To "+" on N.W. Cor. Bridge Wall	
#198	Int. Reel Rd. Fd. R.R. Spk. To Surface	44.02	S.W. To Con. Wit. Mon. (D)	
		40.91	S.E. Con Wit Mon. (D)	
		38.22	<del>S.E. To Shiner in T.P. (D)</del>	
		36.08	N.E. To Hole in Lu. Co. R.M. (D)	
#197	E & W. Sec. 19 Fd. R.R. Spk. To Surface	27.46'	N.W. To Shiner in T.P. (D)	
		43.98'	N.E. To Con. Wit. Mon. (D)	
		39.48'	S.E. To Con. Wit. Mon. (D)	
		34.77'	<del>W.S.W. To Shiner in 8" Tree (D)</del>	
#196	Between Wabash R.R. & Monclova Rds. Fd. R.R. Spk. To Surface	29.81'	W. S.W. To Shiner in T.P. (D)	
		29.87'	<del>N.E. To Shiner in T.P. (D)</del>	
		28.71'	E. To Con. Wit. Mon. (D)	
		36.75'	N.W. To Con. Wit. Mon. (D)	
#195	Into Monclova Rd. Fd. R.R. Spk. To Surface	35.56'	S.E. To "+" on Con. Head Wall (D)	
		39.30' OK	N.E. To "+" on Con. Head Wall (D)	
		<del>37.07'</del>	<del>S.W. To Bottom of "V" in Lu. Co. R.M. (D)</del>	
		<del>38.65'</del>	<del>N.W. To "+" on Con. Head Wall (D)</del>	
#194	Between Monclova Rds. & E & W. Sec. 18 Could Not Find			