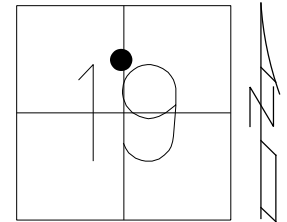


O.D.O.T. DISTRICT 2 SURVEY OFFICE (USE ONLY)

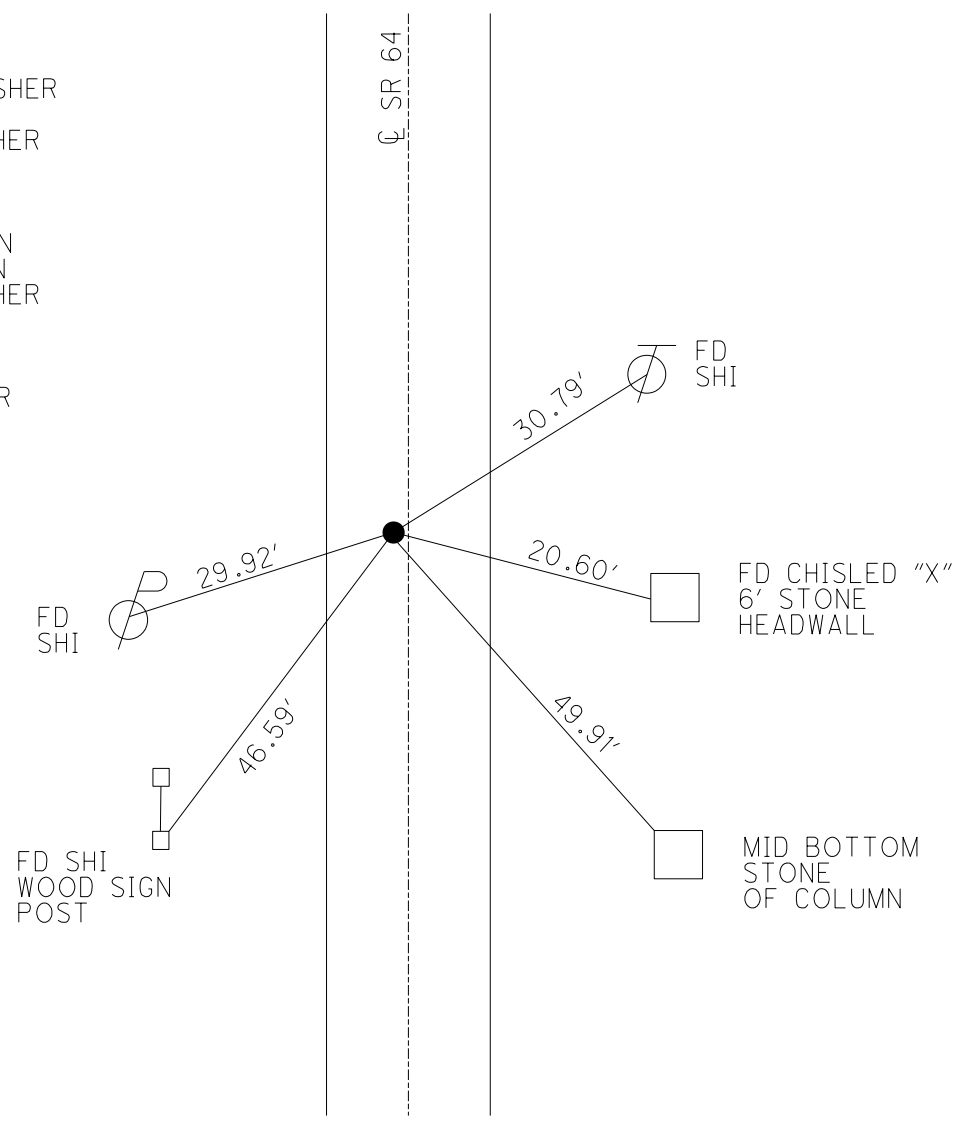
PERSONNEL _____ REFERENCE NO. 53 SHEET 52 OF 56
 NOTES NIESE DATE 5/9/23 ROUTE SR 64
 H.C. AUBLE WEATHER SUNNY COUNTY LUCAS
 R.C. ASTON TEMP. 60° TOWNSHIP SWANTON
 DWG BY RHOADES PID PAVING TRAIN SECTION 19
 T 7 N R 9 E

TYPE MONUMENT MAG/WASHER
 ON SURFACE - ~~BELOW~~ ON
 OFFSET Q PAVEMENT 1.0' LT : ~~RT~~
8.9 TO LT EDGE PAVEMENT
 STATION: 569+90.12



HORZ. DATUM: NAD83 (2011) GEOID: NAVD88 2018
 GRID: NORTHING: 692078.244 EASTING: 1592686.588

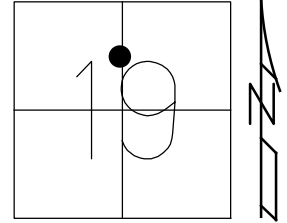
RECORD:
 SET MAG/WASHER
 10-12-04, MB
 FD MAG/WASHER
 REF53
 3-6-19, JLL
 REF53
 8/23/22, TDN
 11/21/22, TDN
 FD MAG/WASHER
 REF53
 2/6/23, JAM
 5/9/23, TDN
 2/27/24, JMR



O.D.O.T. DISTRICT 2 SURVEY OFFICE (USE ONLY)

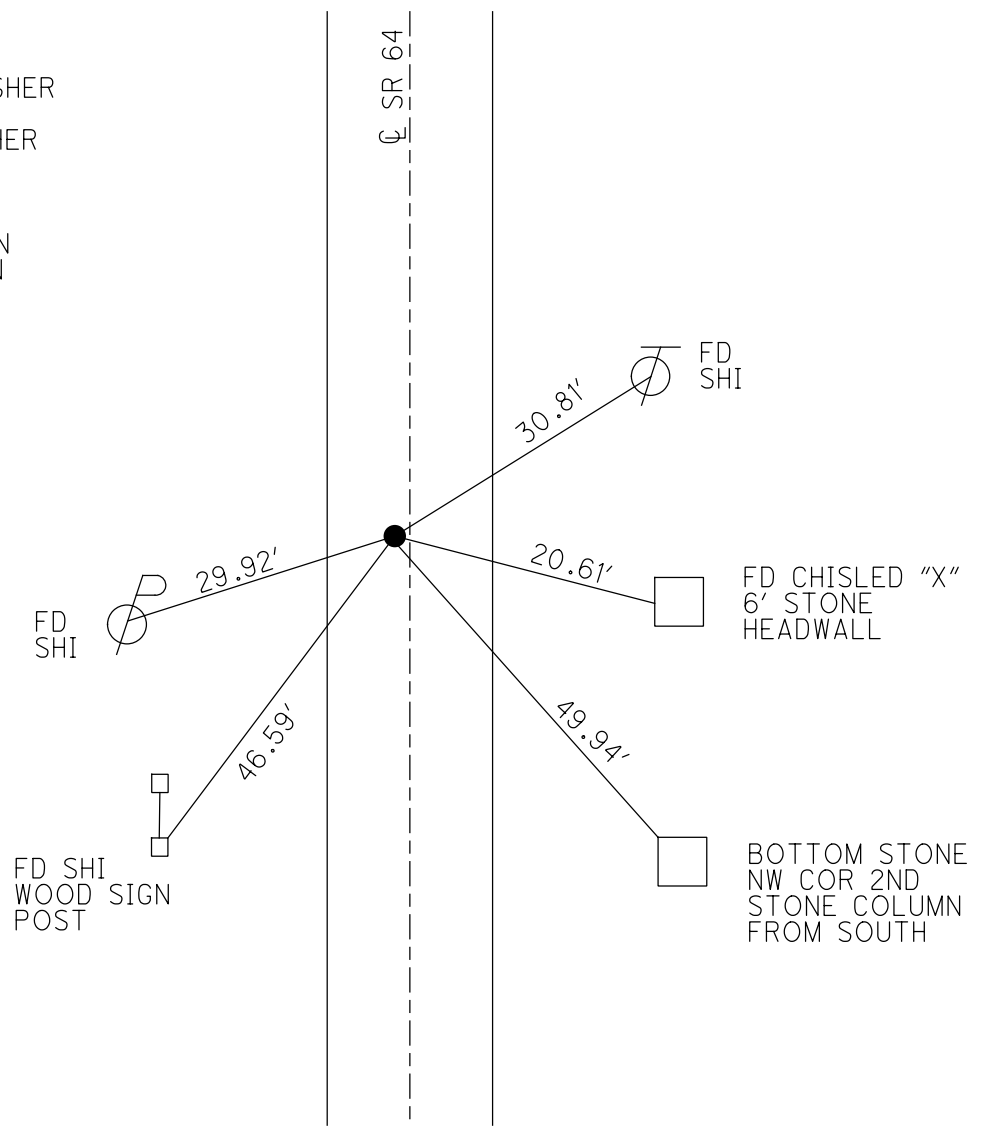
PERSONNEL _____ REFERENCE NO. 53 SHEET 52 OF 56
 NOTES BALBAUGH DATE 5/11/20 ROUTE SR 64
 H.C. LEU WEATHER CLOUDY COUNTY LUCAS
 R.C. AUBLE TEMP. 39° TOWNSHIP SWANTON
 DWG BY GARRETT PID 107059 SECTION 19
 T 7 N R 9 E

TYPE MONUMENT MAG/WASHER
 ON SURFACE - ~~BELOW~~ ON _____
 OFFSET \perp PAVEMENT 1.0' LT : ~~RT~~
8.9 TO LT EDGE PAVEMENT
 STATION: 569+90.12



HORZ.DATUM: NAD83 (2011) GEOID: 2012A
 GRID: NORTHING: 692078.244 EASTING: 1592686.588

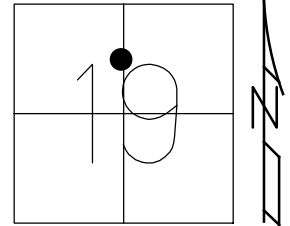
RECORD:
 SET MAG/WASHER
 10-12-04, MB
 FD MAG/WASHER
 REF53
 3-6-19, JLL
 REF53
 8/23/22, TDN
 11/21/22, TDN



O.D.O.T. DISTRICT 2 SURVEY OFFICE (USE ONLY)

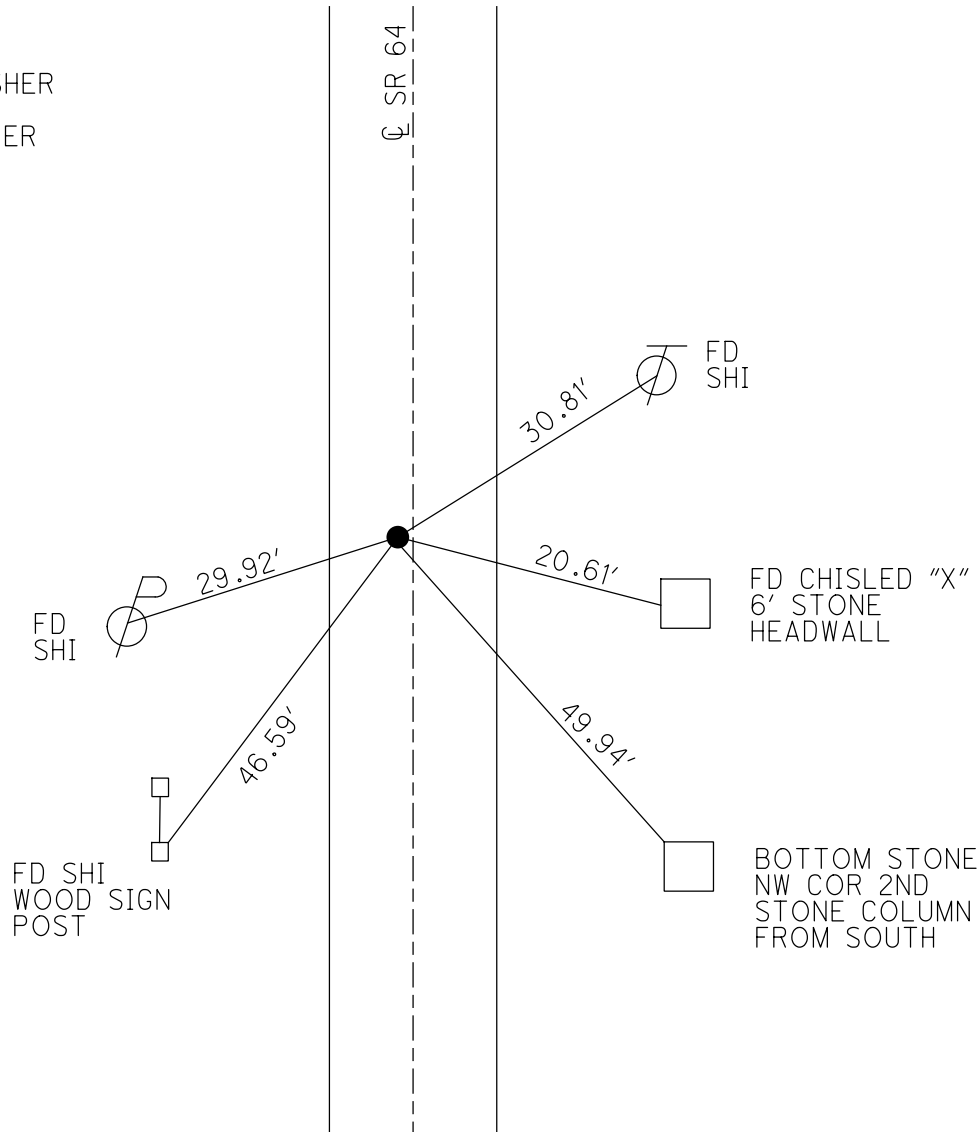
PERSONNEL _____ REFERENCE NO. 53 SHEET 52 OF 56
 NOTES BALBAUGH DATE 5/11/20 ROUTE SR 64
 H.C. LEU WEATHER CLOUDY COUNTY LUCAS
 R.C. AUBLE TEMP. 39° TOWNSHIP SWANTON
 DWG BY GARRETT PID 107059 SECTION 19
 T 7 N R 9 E

TYPE MONUMENT MAG/WASHER
 ON SURFACE - ~~BELOW~~ ON
 OFFSET \bar{C} PAVEMENT 1.0' LT : ~~RT~~
8.9 TO LT EDGE PAVEMENT
 STATION: 569+90.12



HORIZ.DATUM: NAD83 (2011) GEOID: 2012A
 GRID: NORTHING: 692078.244 EASTING: 1592686.588

RECORD:
 SET MAG/WASHER
 10-12-04, MB
 FD MAG/WASHER
 REF53
 3-6-19, JLL



O.D.O.T. DISTRICT 2 SURVEY OFFICE

PERSONNEL

REFERENCE NO. 53

SHEET 6 OF 10

NOTES _____ HUSS _____

DATE 6-16-04

ROUTE SR 64

H.C. _____ HOMAN _____

WEATHER CLOUDY

COUNTY LUCAS

R.C. _____ HUSS _____

TEMP. 78°

TOWNSHIP SWANTON

SECTION 19

T 7 N R 9 E

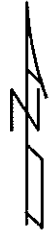
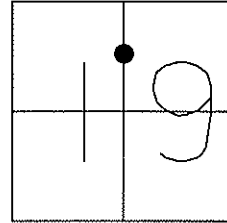
TYPE MONUMENT _____ SM RR SPIKE _____

ON SURFACE - ~~BELOW~~ _____ YES _____

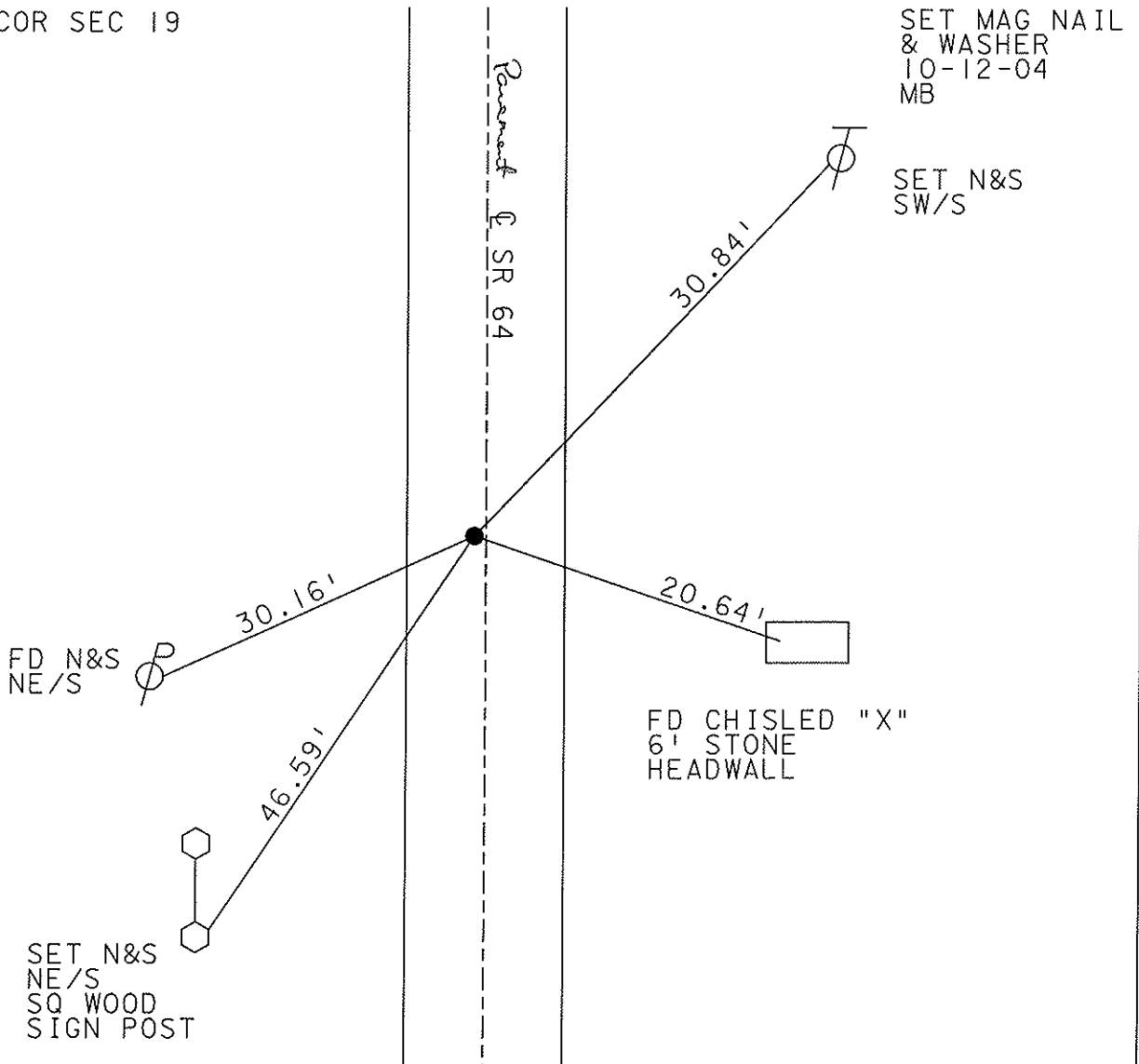
LEFT - ~~C PAVT~~ - ~~RIGHT~~ _____ 1.0' LT _____

8.9 TO LT EDGE PAVEMENT

S.L.M. _____ 570+55 _____



N 1/16 COR SEC 19



O.D.O.T. DISTRICT 2 SURVEY OFFICE

PERSONNEL _____

REFERENCE NO. 53

SHEET 6 OF 9

NOTES J. Householder

H.C. D. Curtis

DATE Sept. 25, 1986

ROUTE S.R. 64

R.C. _____

WEATHER Cloudy

COUNTY Lucas

TEMP. ± 72°

TOWNSHIP Swanton

SECTION 19

T _____ R _____

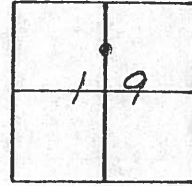
TYPE MONUMENT R.R. Spike

ON SURFACE - BELOW on surface

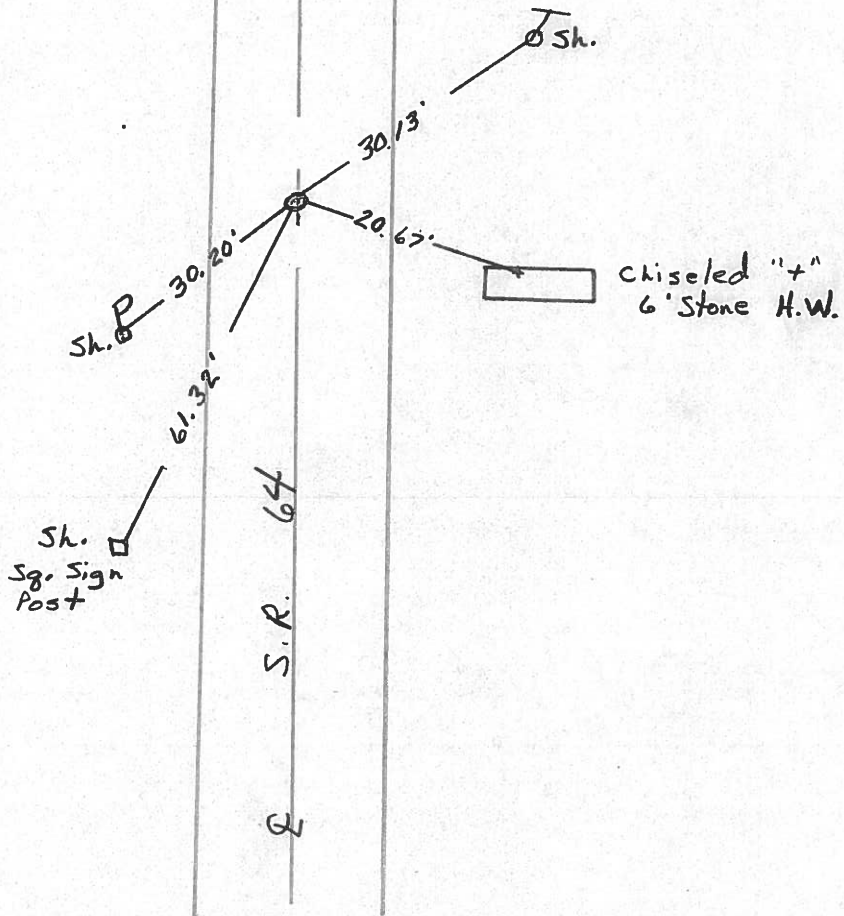
LEFT - ☉ PAV'T. - RIGHT 1' Left

_____ TO _____ EDGE PAVEMENT

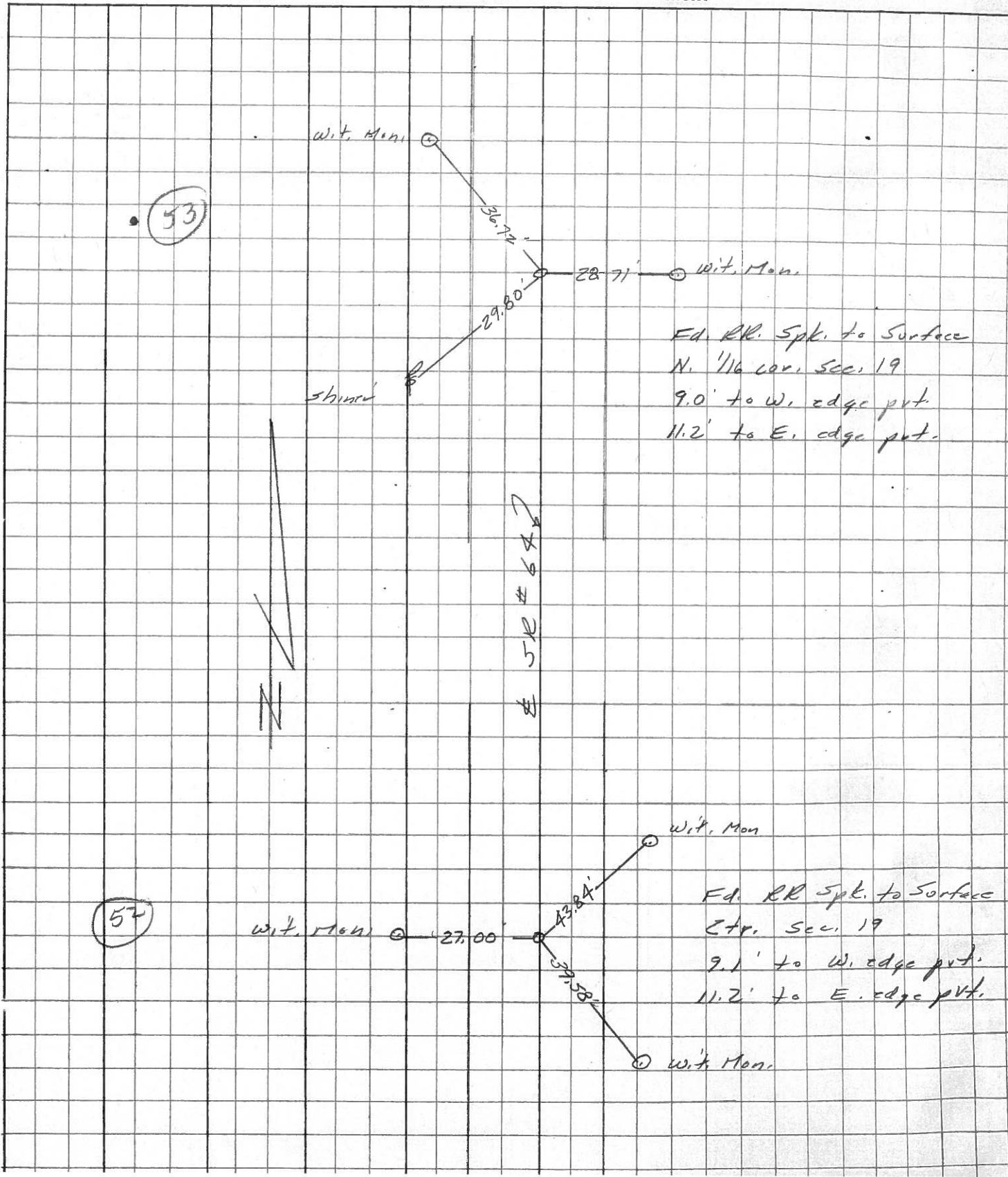
S.L.M. 570 + 55



N. 1/16 Corner Sec. 19
Set Small RR Spk 7/8/88 IRS



PERSONNEL	TITLE	PERSONNEL	TITLE	COUNTY	Lucas	DATE	21 March
Stone				S. R.	67	WEATHER	Cold
				SEC.		TEMP.	32°
Crew				DESCRIPTION		References to Control Points	
				LEFT	CENTER LINE	RIGHT	JOB NO.



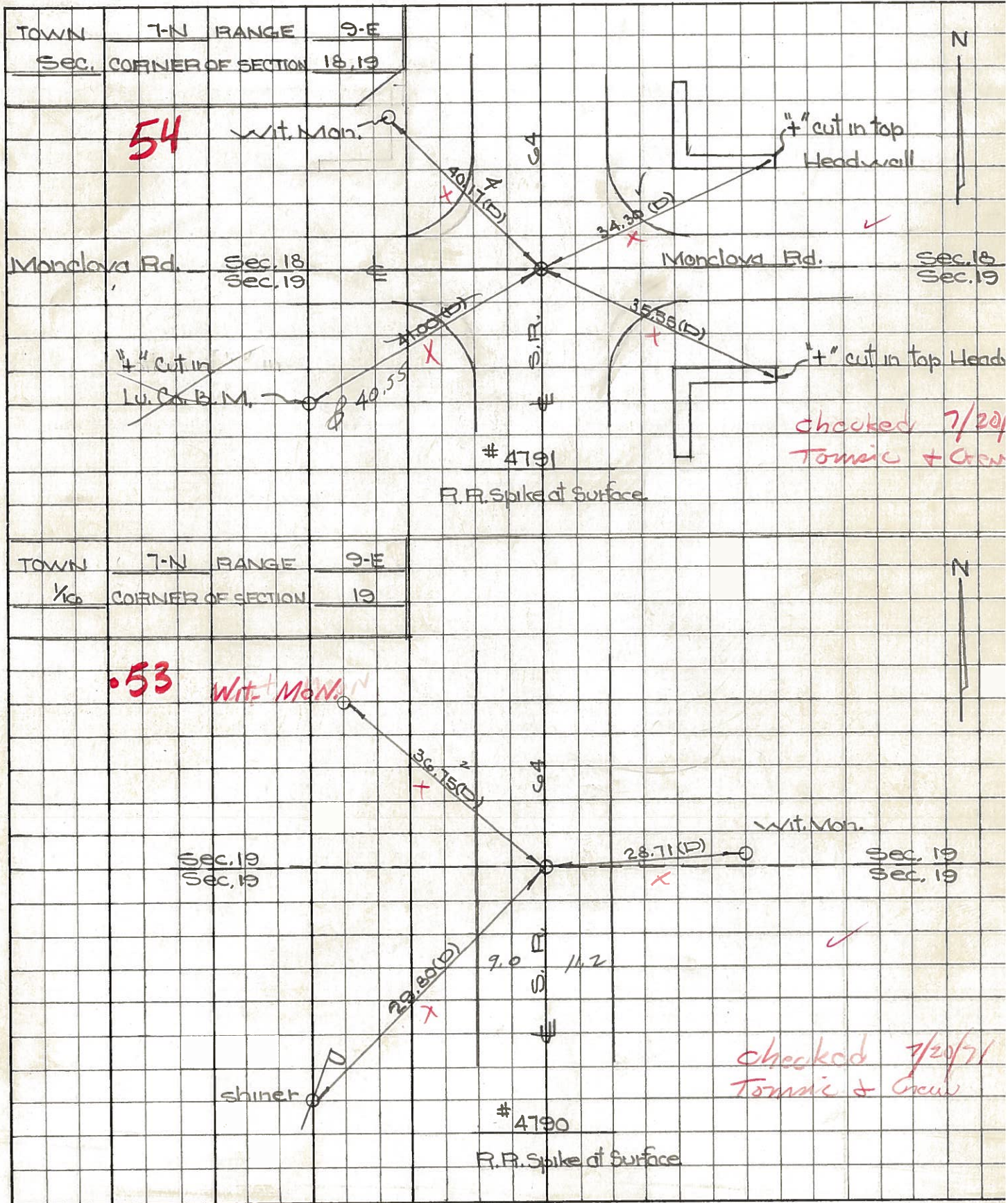
Ed. RR. Spl. to Surface
 N. 1/4 cor. Sec. 19
 9.0' to W. edge pt.
 11.2' to E. edge pt.

Ed. RR Spl. to Surface
 Etr. Sec. 19
 9.1' to W. edge pt.
 11.2' to E. edge pt.

PERSONNEL TITLE PERSONNEL TITLE
 W. Denno _____
 D. Curtis _____
 J. Teal _____
 J. Brindley _____

COUNTY Lucas DATE Aug. 20, 1920
 S. R. 64 WEATHER warm
 SEC. _____ TEMP. 85° ±

DESCRIPTION S.R. 64 - Ref. Mon. & Control Points JOB NO. 02994 (a)



PERSONNEL TITLE PERSONNEL TITLE COUNTY Lucas DATE 4 Mar. 66
 Slone _____
 Beck _____ S. R. # 64 WEATHER Windy
 Brindley _____
 Schroder _____ SEC. N. From Sunshine Cons. TEMP. 78°

DESCRIPTION Rets. To Central Pts. JOB NO.
 LEFT CENTER LINE RIGHT

.50

#199 N. Line Sec. 30 13.71' E. To "+" on S.E. Cor. Bridge Wall
 Fd. R.R. Spk 13.82' W. To "+" on S.W. Cor. Bridge Wall
 To Surface 21.32' N.E. To "+" on N.E. Cor. Bridge Wall
 21.51' N.W. To "+" on N.W. Cor. Bridge Wall

51

#198 Int. Reel Rd. 44.02 ~~42.78~~ S.W. To Con. Wit. Mon. (D)
 Fd. R.R. Spk. 40.91 ~~36.52~~ S.E. To Con. Wit. Mon. (D)
 To Surface 38.22 ~~38.22~~ N.E. To Hole in Lu. Co. R.M. (D)
 36.08 ~~34.25~~ N.W. To Shiner in T.P. (D)
 N.W. "+" Cut in top Headwall

52

#197 E & W. Sec. 19 27.46' W. To Con. Wit. Mon. (D)
 Fd. R.R. Spk. 43.98' N.E. To Con. Wit. Mon. (D)
 To Surface 39.48' S.E. To Con. Wit. Mon. (D)
~~34.77' W.S.W. To Shiner in 8" Tree (D)~~

53

#196 Between Wabash R.R. & 9.80 29.81' W. S.W. To Shiner in T.P. (D)
 Monclova Rd. ~~29.87~~ N.E. To Shiner in T.P. (D)
 Fd. R.R. Spk. 28.71 28.69' E. To Con. Wit. Mon. (D)
 To Surface 36.75 37.05' N.W. To Con. Wit. Mon. (D)

54

#195 Into Monclova Rd. 35.56' S.E. To "+" on Con. Head Wall (D)
 Fd. R.R. Spk. 39.30' N.E. To "+" on Con. Head Wall (D)
 To Surface ~~37.07~~ S.W. To Bottom of "V" in Lu. Co. R.M. (D)
~~38.65~~ N.W. To "+" on Con. Head Wall (D)

#194 Between Monclova Rd. & E & W. Sec. 18
 Could Not Find