

O.D.O.T. DISTRICT 2 SURVEY OFFICE (USE ONLY)

PERSONNEL \_\_\_\_\_ REFERENCE NO. 55 SHEET 54 OF 56

NOTES NIESE DATE 5/9/23 ROUTE SR 64  
 H.C. AUBLE WEATHER SUNNY COUNTY LUCAS  
 R.C. ASTON TEMP. 65° TOWNSHIP SWANTON  
 SECTION 18

DWG BY RHOADES PID PAVING TRAIN T 7 N R 9 E

TYPE MONUMENT MAG/WASHER

ON SURFACE - ~~BELOW~~ ON

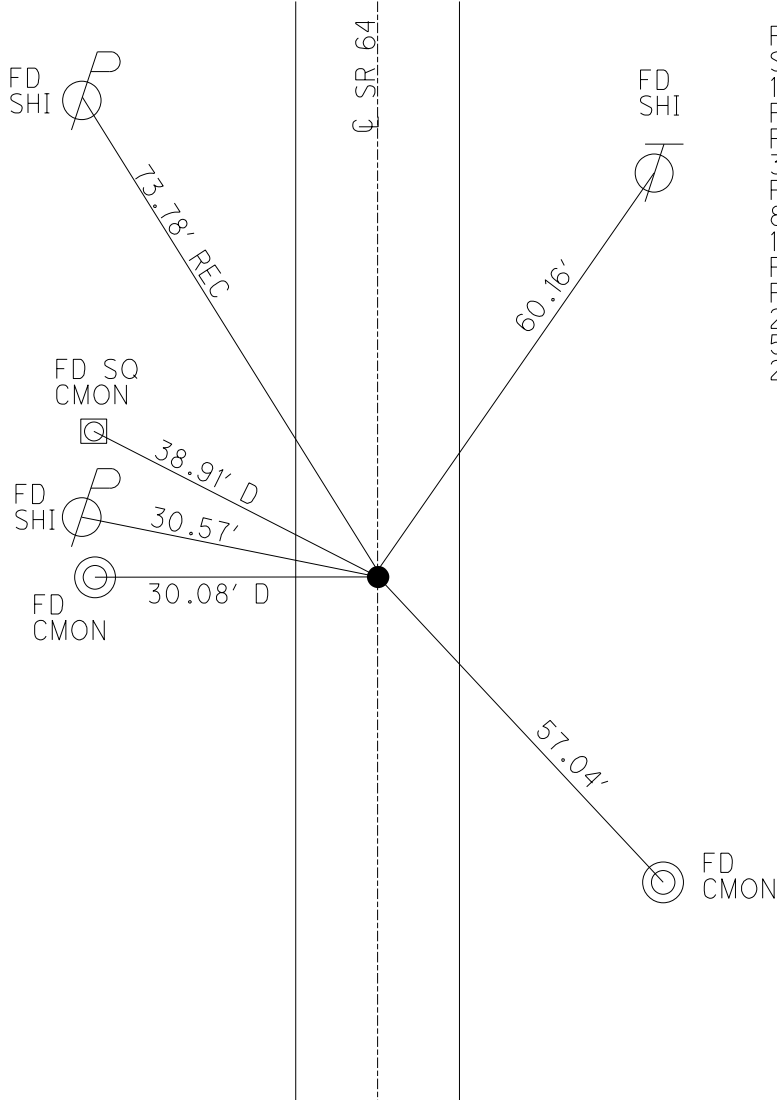
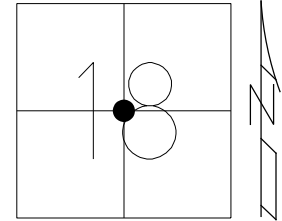
OFFSET CL PAVEMENT ON LT : RT

9.7 TO RT EDGE PAVEMENT

STATION: 603+14.73

HORZ.DATUM: NAD83 (2011) GEOID: NAVD88 2018

GRID: NORTHING: 695402.425 EASTING: 1592739.173



RECORD:  
 SET MAG/WASHER  
 10-12-04, MB  
 FD MAG/WASHER  
 REF55  
 3-6-19, JLL  
 REF55  
 8/23/22, TDN  
 11/21/22, TDN  
 FD MAG/WASHER  
 REF55  
 2/6/23, JAM  
 5/9/23, TDN  
 2/27/24, JMR

O.D.O.T. DISTRICT 2 SURVEY OFFICE (USE ONLY)

PERSONNEL

REFERENCE NO. 55

SHEET 54 OF 56

NOTES BALBAUGH

DATE 5/11/20

ROUTE SR 64

H.C. LEU

WEATHER CLOUDY

COUNTY LUCAS

R.C. AUBLE

TEMP. 39°

TOWNSHIP SWANTON

SECTION 18

DWG BY GARRETT PID 107059

T 7 N R 9 E

TYPE MONUMENT MAG/WASHER

ON SURFACE - ~~BELOW~~ ON

OFFSET Q PAVEMENT ON LT : RT

9.7 TO RT EDGE PAVEMENT

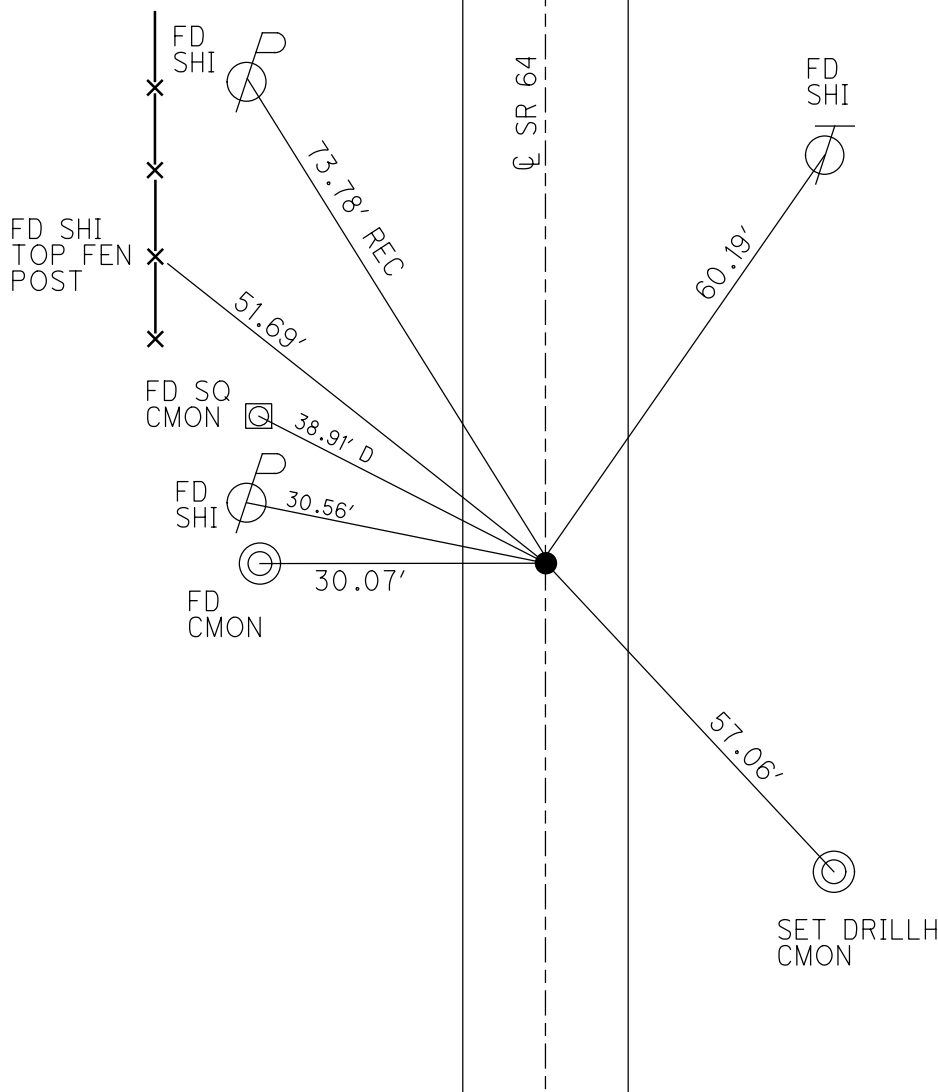
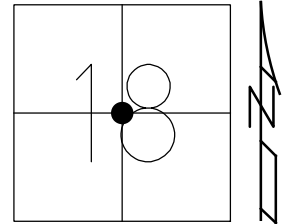
STATION: 603+14.73

HORZ.DATUM: NAD83 (2011)

GEOID: 2012A

GRID: NORTHING: 695402.425

EASTING: 1592739.173



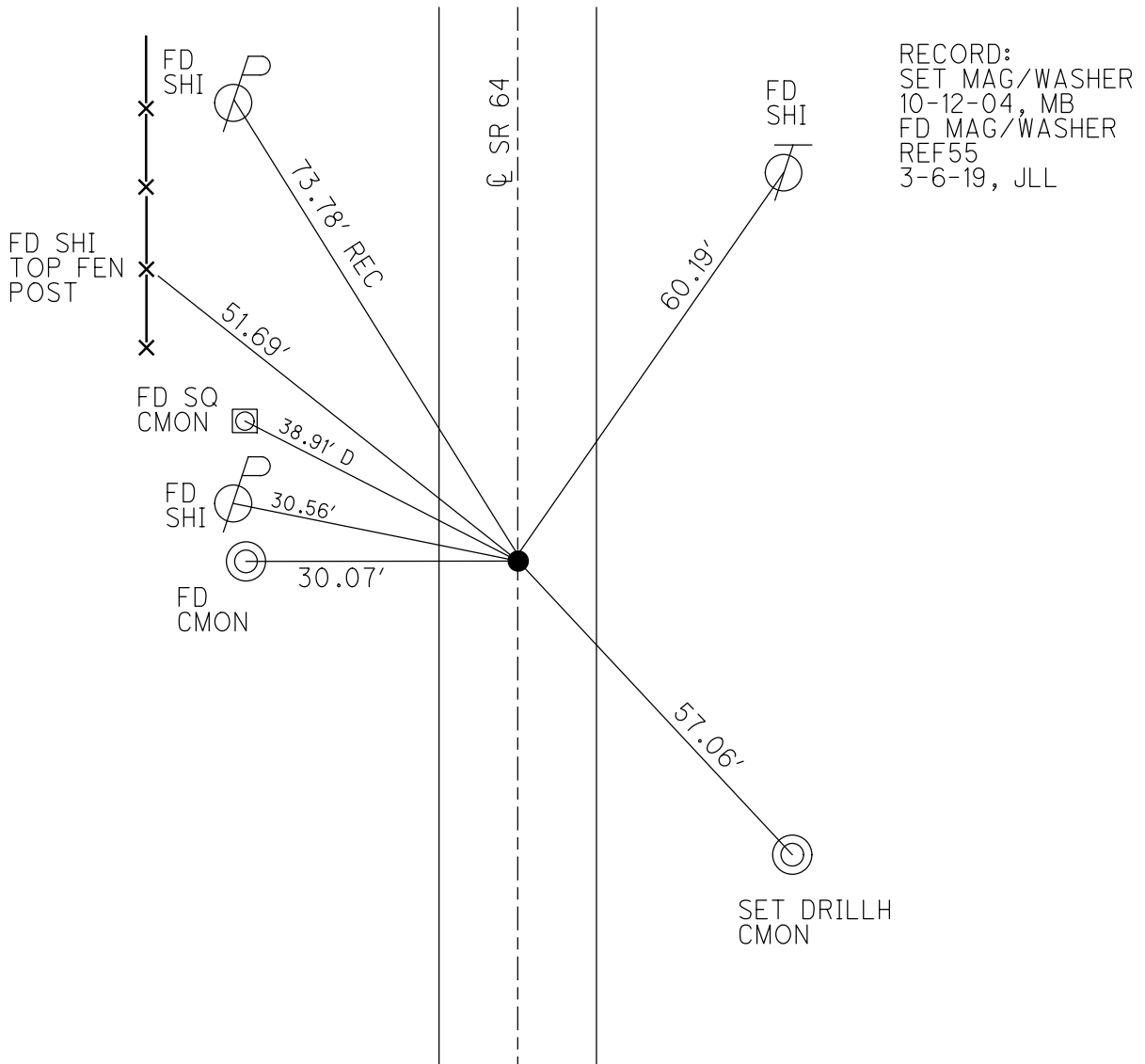
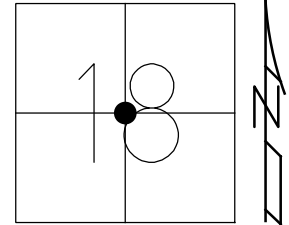
RECORD:  
 SET MAG/WASHER  
 10-12-04, MB  
 FD MAG/WASHER  
 REF55  
 3-6-19, JLL  
 REF55  
 8/23/22, TDN  
 11/21/22, TDN

O.D.O.T. DISTRICT 2 SURVEY OFFICE (USE ONLY)

PERSONNEL \_\_\_\_\_ REFERENCE NO. 55 SHEET 54 OF 56  
 NOTES BALBAUGH DATE 5/11/16 ROUTE SR 64  
 H.C. LEU WEATHER CLOUDY COUNTY LUCAS  
 R.C. AUBLE TEMP. 39° TOWNSHIP SWANTON  
 DWG BY GARRETT PID 107059 SECTION 18  
 T 7 N R 9 E

TYPE MONUMENT MAG/WASHER  
 ON SURFACE - ~~BELOW~~ ON  
 OFFSET  $\odot$  PAVEMENT ON LT : RT  
9.7 TO RT EDGE PAVEMENT  
 STATION: 603+14.73

HORZ.DATUM: NAD83 (2011) GEOID: 2012A  
 GRID: NORTHING: 695402.425 EASTING: 1592739.173



O.D.O.T. DISTRICT 2 SURVEY OFFICE

PERSONNEL

REFERENCE NO. 55

SHEET 8 OF 10

NOTES HUSS

DATE 6-16-04

ROUTE SR 64

H.C. HOMAN

WEATHER CLOUDY

COUNTY LUCAS

R.C. HUSS

TEMP. 78°

TOWNSHIP SWANTON

SECTION 18

T 7 N R 9 E

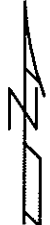
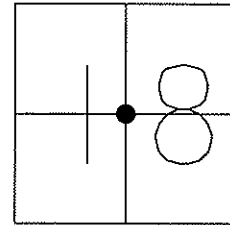
TYPE MONUMENT PK NAIL & WASHER

ON SURFACE - ~~BELOW~~ YES

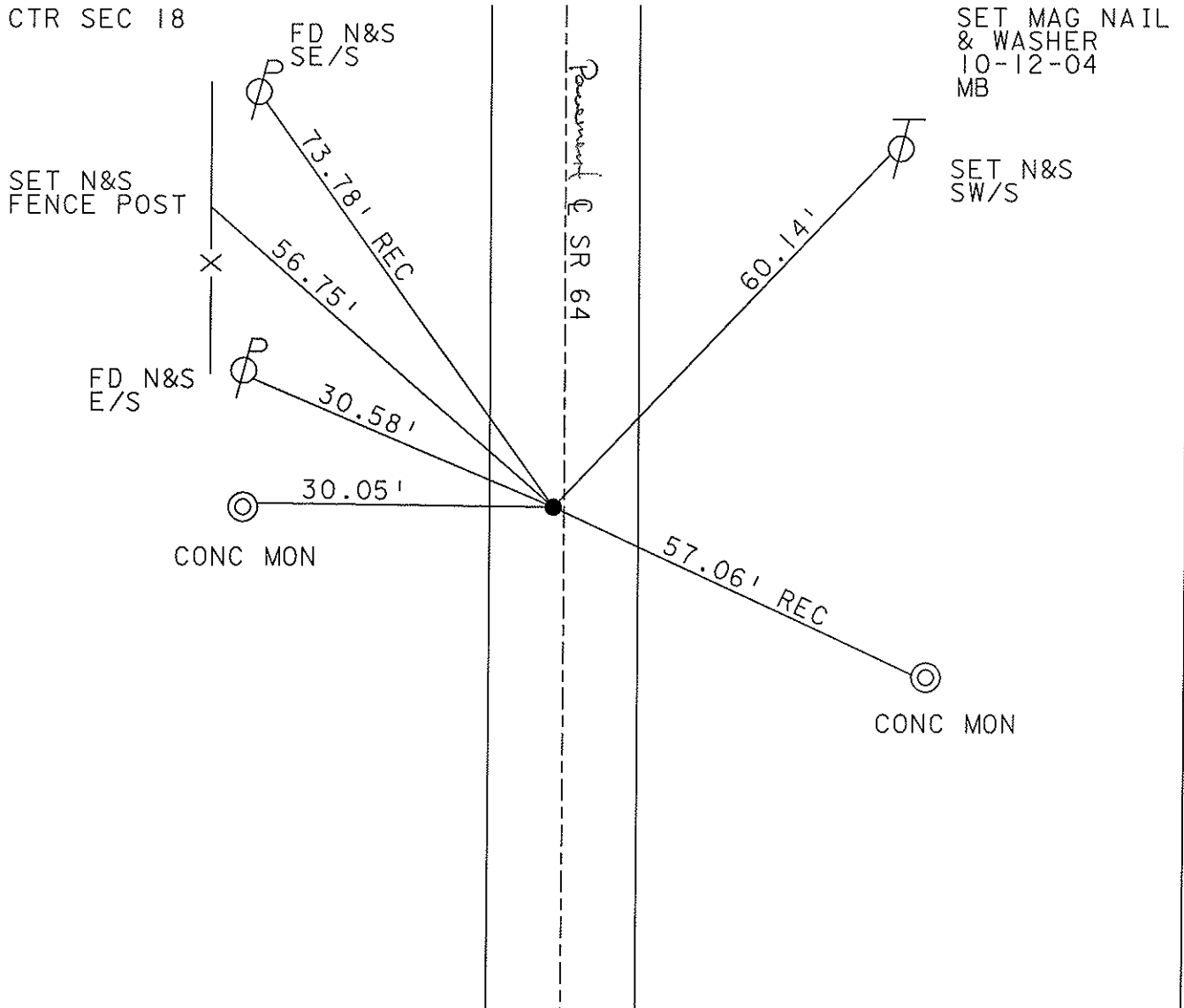
LEFT - ~~PAVT~~ ~~RIGHT~~ 0.3' LT

9.7 TO RT EDGE PAVEMENT

S.L.M. 603+78



CTR SEC 18



# O.D.O.T. DISTRICT 2 SURVEY OFFICE

PERSONNEL \_\_\_\_\_

REFERENCE NO. 55

SHEET 8 OF 9

NOTES J. Householder

H.C. D. Curtis

DATE Sept. 25, 1986

ROUTE S.R. 64

R.C. \_\_\_\_\_

WEATHER P. Cloudy

COUNTY Lucas

\_\_\_\_\_

TEMP. ± 75°

TOWNSHIP Swanton

\_\_\_\_\_

SECTION 18

T \_\_\_\_\_ R \_\_\_\_\_

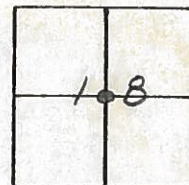
TYPE MONUMENT R.R. spike

ON SURFACE - BELOW Surface

LEFT - ℄ PAV'T. - RIGHT ℄ Pav't.

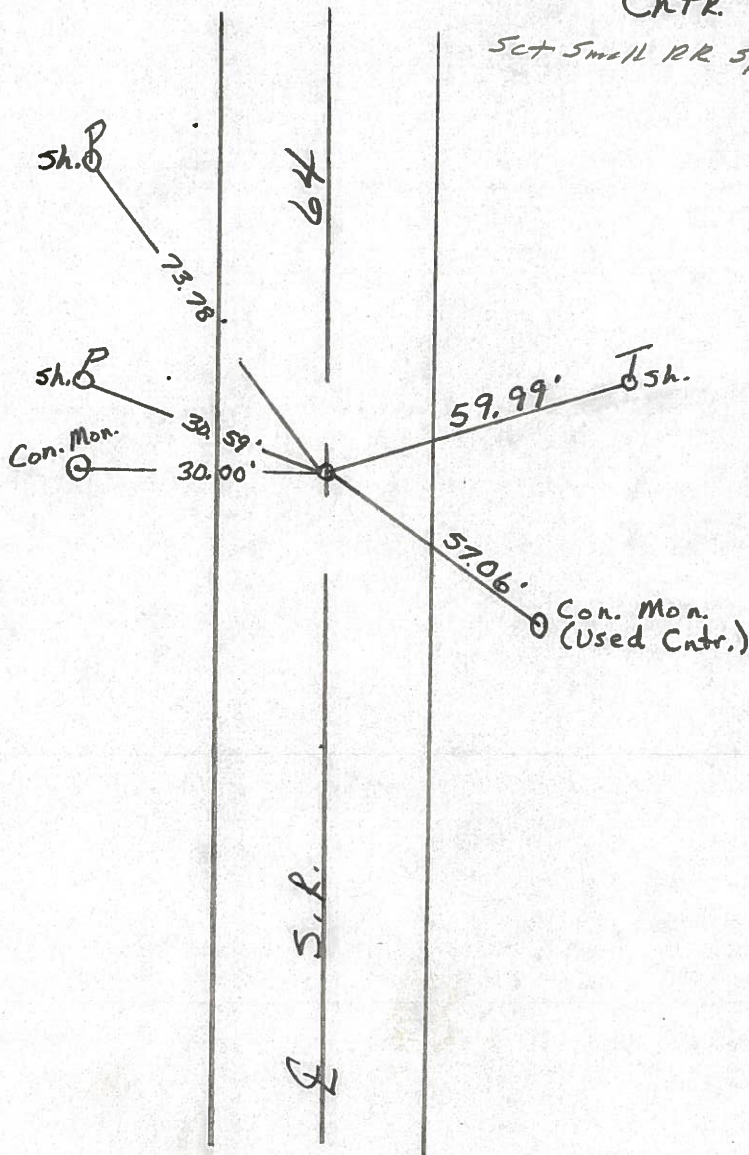
\_\_\_\_\_ TO \_\_\_\_\_ EDGE PAVEMENT

S.L.M. 603 + 78



Cntr. Sec. 18

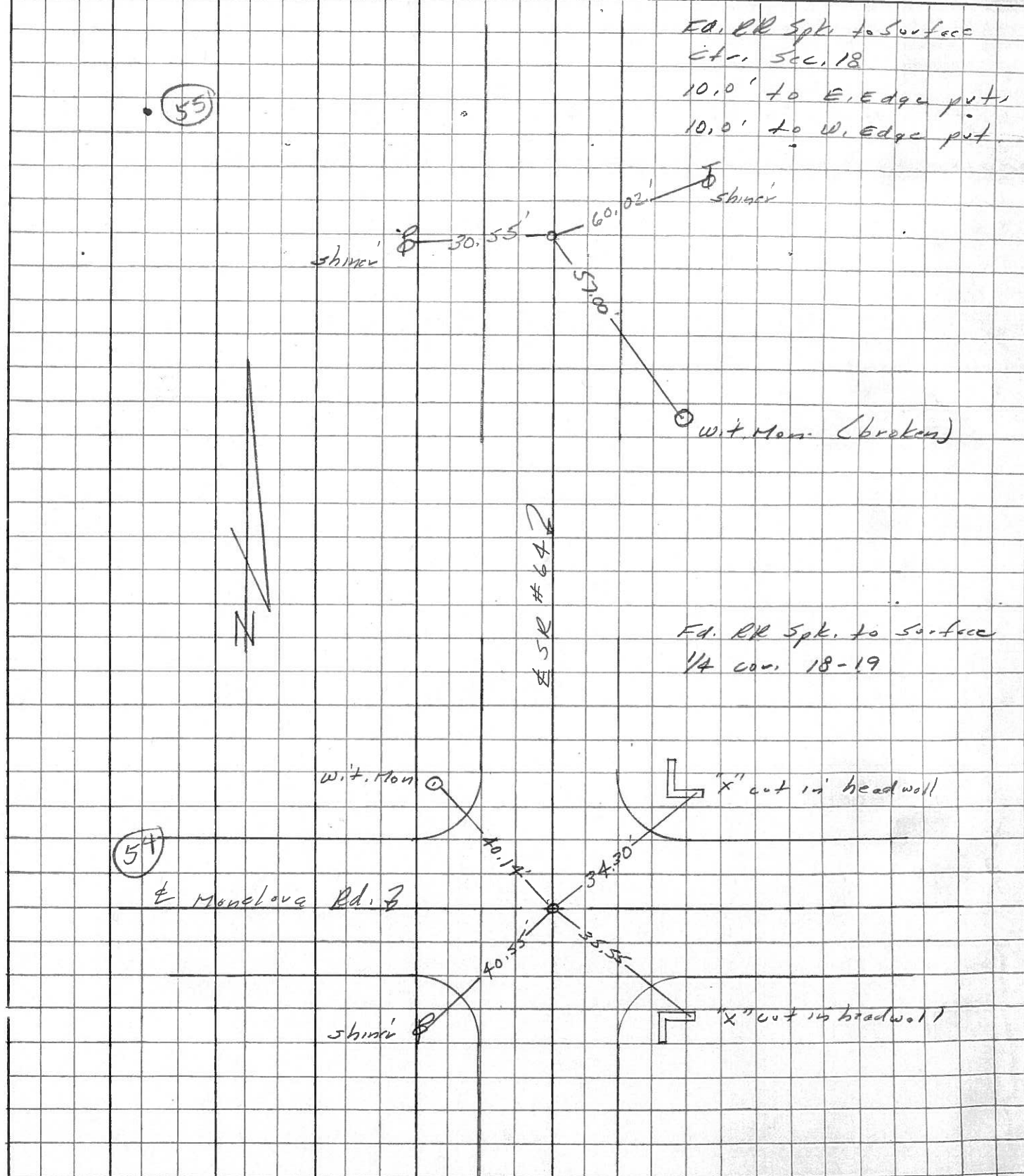
*Set Small RR spk 7/8/88 LRS*



PERSONNEL	TITLE	PERSONNEL	TITLE	COUNTY	Lucas	DATE	21 March
Stone				S. R.	64	WEATHER	Cold
Crew				SEC.		TEMP.	33°

DESCRIPTION References to Control Points JOB NO. \_\_\_\_\_

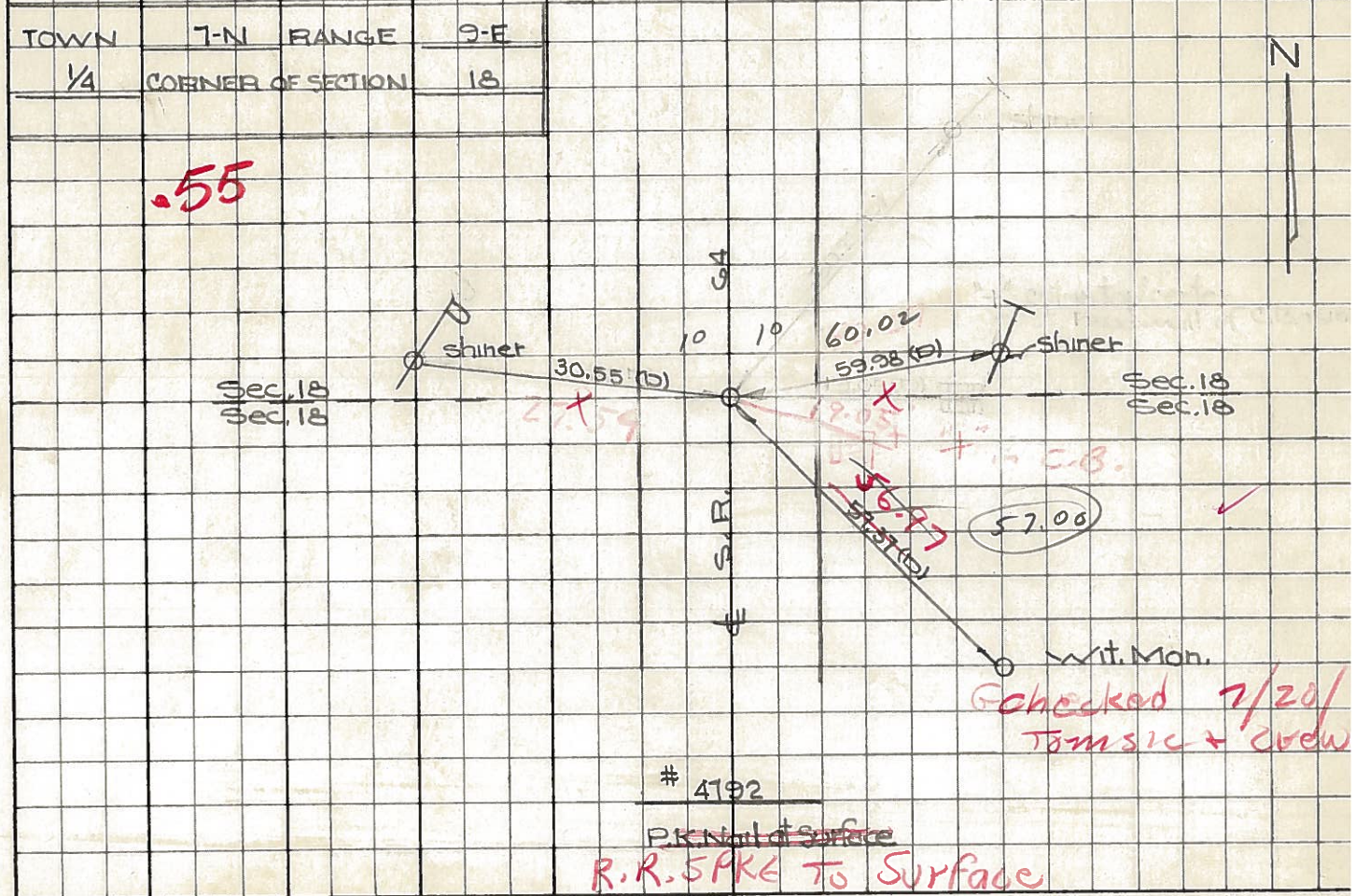
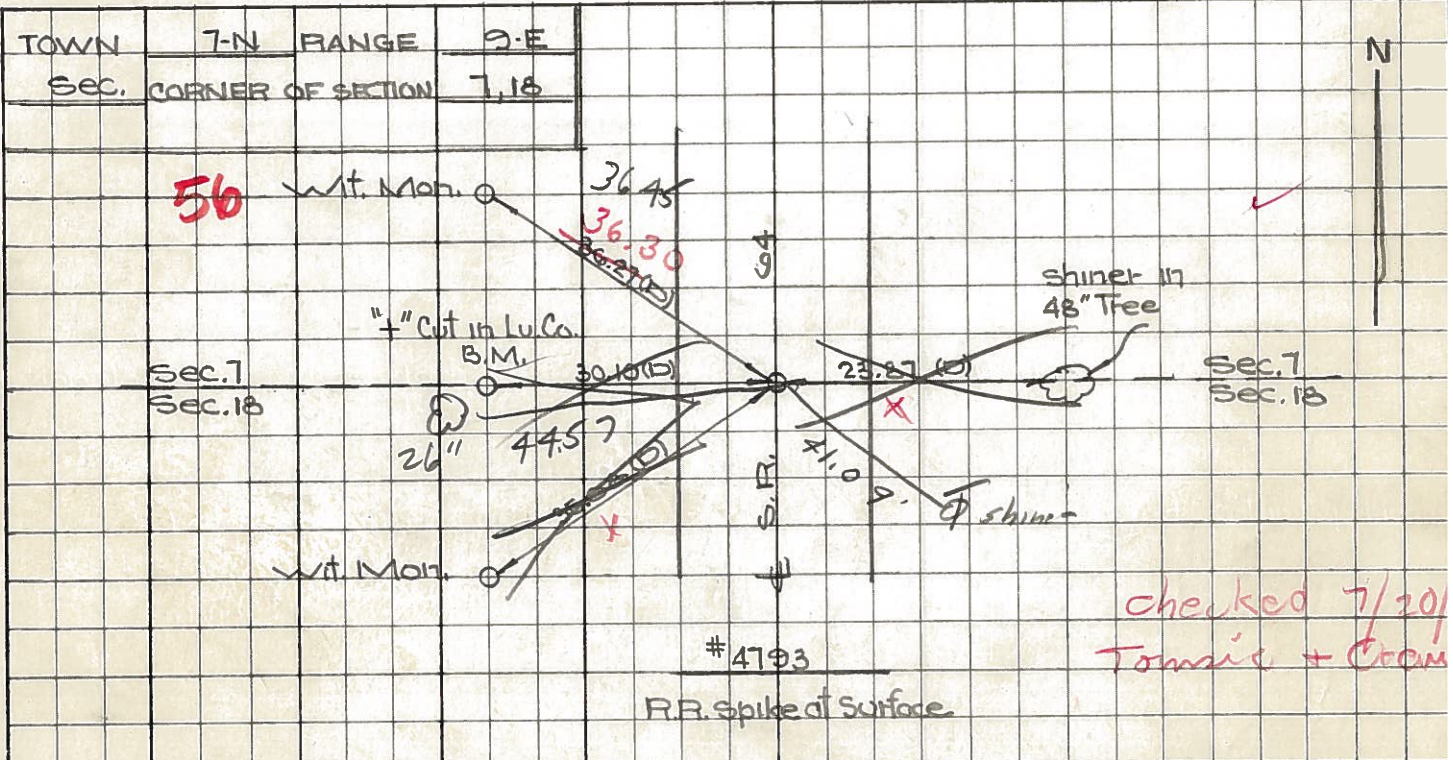
LEFT CENTER LINE RIGHT



PERSONNEL TITLE PERSONNEL TITLE  
 W. Denna \_\_\_\_\_  
 D. Curtis \_\_\_\_\_  
 J. Teal \_\_\_\_\_  
 J. Brindley \_\_\_\_\_

COUNTY Lucas DATE Aug. 20, 1955  
 S. R. 64 WEATHER warm  
 SEC. \_\_\_\_\_ TEMP. 85°±

DESCRIPTION S.R. 64 - Ref. Mon. & Control Points JOB NO. 02994(0)



PERSONNEL TITLE PERSONNEL TITLE COUNTY Lucas DATE 4 Mar. 66  
 Stone Beck S. R. #14 WEATHER Windy  
 Brindley  
 Schroeder SEC. Manclava Rd. to SR#2 TEMP. 48°

DESCRIPTION Refs. To Control Pts. JOB NO.  
 LEFT CENTER LINE RIGHT

.55

#193 E & W. E Sec. 18 30.55 30.59' W. To Shiner in P.P. (D)  
 Fd. R.R. Spike 59.98 60.00' E. To Shiner in T.P. (D)  
 To Surface ~~22.87'~~ S.E. To Shiner in 62" Tree (D)  
 57.37 S.E. To W. Mon.

#192 Between E & W. E Sec. 18 & N. Line Sec. 18  
 Could Not Find No Refs. Loc. Co.

Fb. R.R. spike 7/20/71 Tomasic + crew

56

#191 N. Line Sec 18 36.27 36.07' N.W. To Corn. Wit. Mon. (D)  
 Fd. R.R. Spike 30.10 30.09' W. To "7" in Lu. Co. B.M. (D)  
 To Surface 35.08 35.08' S.W. To Corn. Wit. Mon. (D)  
 23.87 23.90' E. To Shiner in 78" Tree (D)

#113 Int. S.P. #2 27.06' N. To Corn. Wit. Mon. (D)  
 Fd. "7" in 3/4" Brass Pin 37.46' S.E. To Shiner in L.P. (D)  
 1/2" Below Surface 45.09' S.W. To Corn. Wit. Mon. (D)  
 70.56' S.E. To N.W. Corn. Block Bldg. (D)

ON  
 taken on 20A

