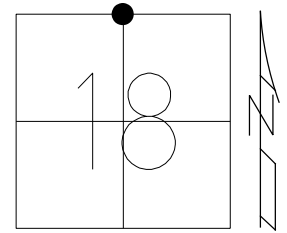


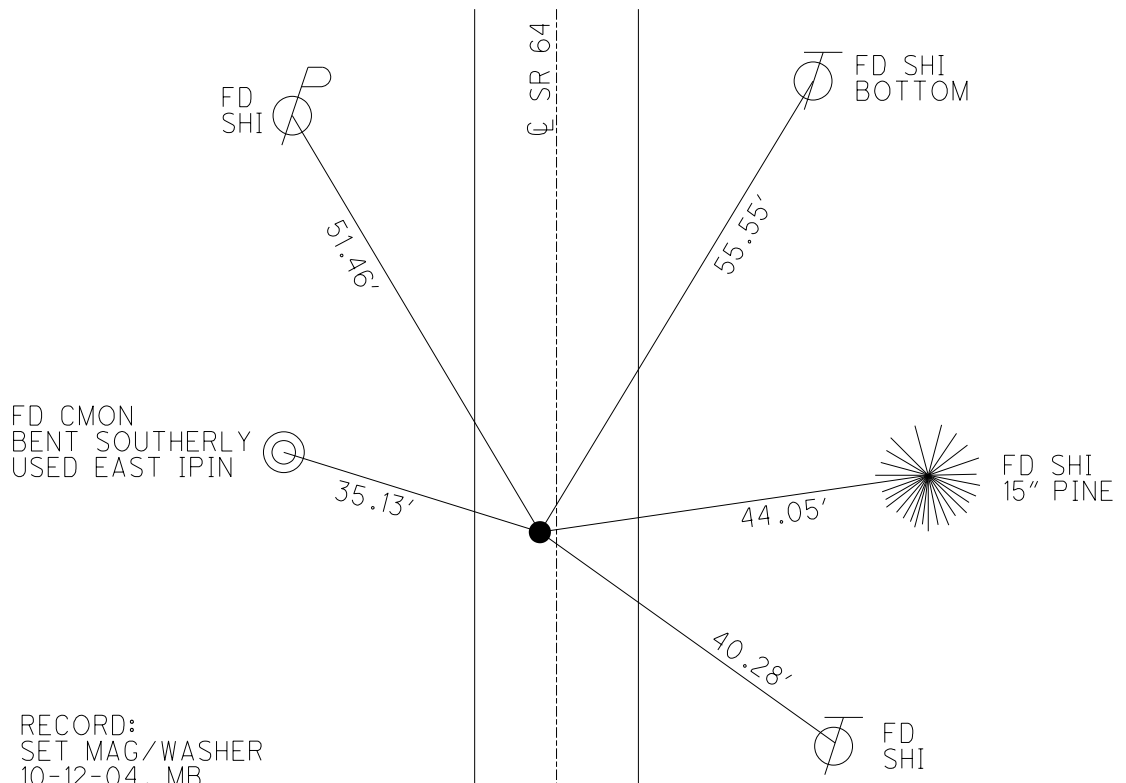
O.D.O.T. DISTRICT 2 SURVEY OFFICE (USE ONLY)

PERSONNEL \_\_\_\_\_ REFERENCE NO. 56 SHEET 55 OF 56  
 NOTES NIESE DATE 5/9/23 ROUTE SR 64  
 H.C. AUBLE WEATHER SUNNY COUNTY LUCAS  
 R.C. ASTON TEMP. 60° TOWNSHIP SWANTON  
 DWG BY RHOADES PID PAVING TRAIN SECTION 18  
 T 7 N R 9 E

TYPE MONUMENT MAG/WASHER  
 ON SURFACE - ~~BELOW~~ ON  
 OFFSET 8.4 TO LT EDGE PAVEMENT  
 STATION: 629+74.03



HORIZ.DATUM: NAD83 (2011) GEOID: 2012A  
 GRID: NORTHING: 698061.617 EASTING: 1592758.940

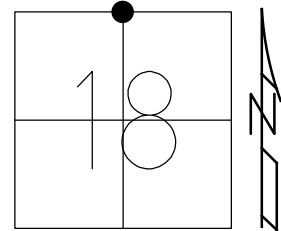


RECORD:  
 SET MAG/WASHER  
 10-12-04, MB  
 FD MAG/WASHER  
 REF56  
 3-6-19, JLL  
 REF56  
 8/23/22, TDN  
 11/21/22, TDN  
 FD MAG/WASHER  
 REF56  
 2/6/23, JAM  
 5/9/23, TDN  
 2/27/24, JMR

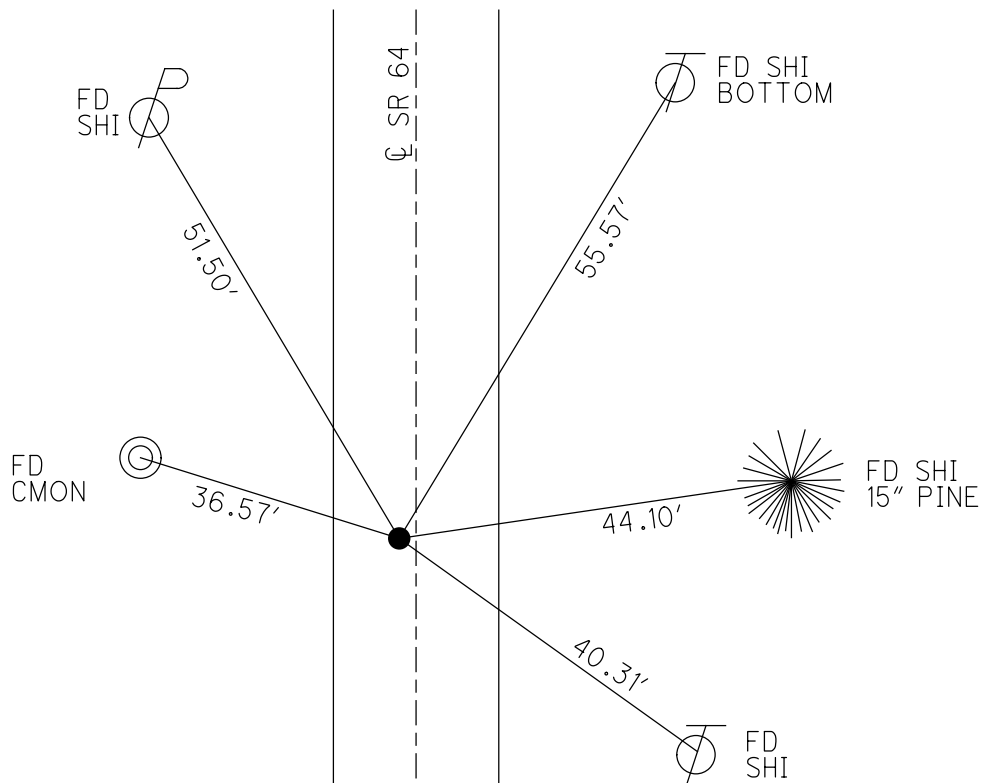
O.D.O.T. DISTRICT 2 SURVEY OFFICE (USE ONLY)

PERSONNEL \_\_\_\_\_ REFERENCE NO. 56 SHEET 55 OF 56  
 NOTES BALBAUGH DATE 5/11/20 ROUTE SR 64  
 H.C. LEU WEATHER CLOUDY COUNTY LUCAS  
 R.C. DSA TEMP. 39° TOWNSHIP SWANTON  
 DWG BY GARRETT PID 107059 SECTION 18  
 T 7 N R 9 E

TYPE MONUMENT MAG/WASHER  
 ON SURFACE - ~~BELOW~~ ON  
 OFFSET  $\varnothing$  PAVEMENT 1.3' LT : ~~RT~~  
8.4 TO LT EDGE PAVEMENT  
 STATION: 629+74.03



HORIZ.DATUM: NAD83 (2011) GEOID: 2012A  
 GRID: NORTHING: 698061.617 EASTING: 1592758.940



RECORD:  
 SET MAG/WASHER  
 10-12-04, MB  
 FD MAG/WASHER  
 REF56  
 3-6-19, JLL  
 REF56  
 8/23/22, TDN  
 11/21/22, TDN

O.D.O.T. DISTRICT 2 SURVEY OFFICE (USE ONLY)

PERSONNEL

REFERENCE NO. 56

SHEET 55 OF 56

NOTES BALBAUGH

DATE 5/11/20

ROUTE SR 64

H.C. LEU

WEATHER CLOUDY

COUNTY LUCAS

R.C. DSA

TEMP. 39°

TOWNSHIP SWANTON

DWG BY GARRETT PID 107059

SECTION 18

T 7 N R 9 E

TYPE MONUMENT MAG/WASHER

ON SURFACE - ~~BELOW~~ ON

OFFSET Q PAVEMENT 1.3' LT : ~~RT~~

8.4 TO LT EDGE PAVEMENT

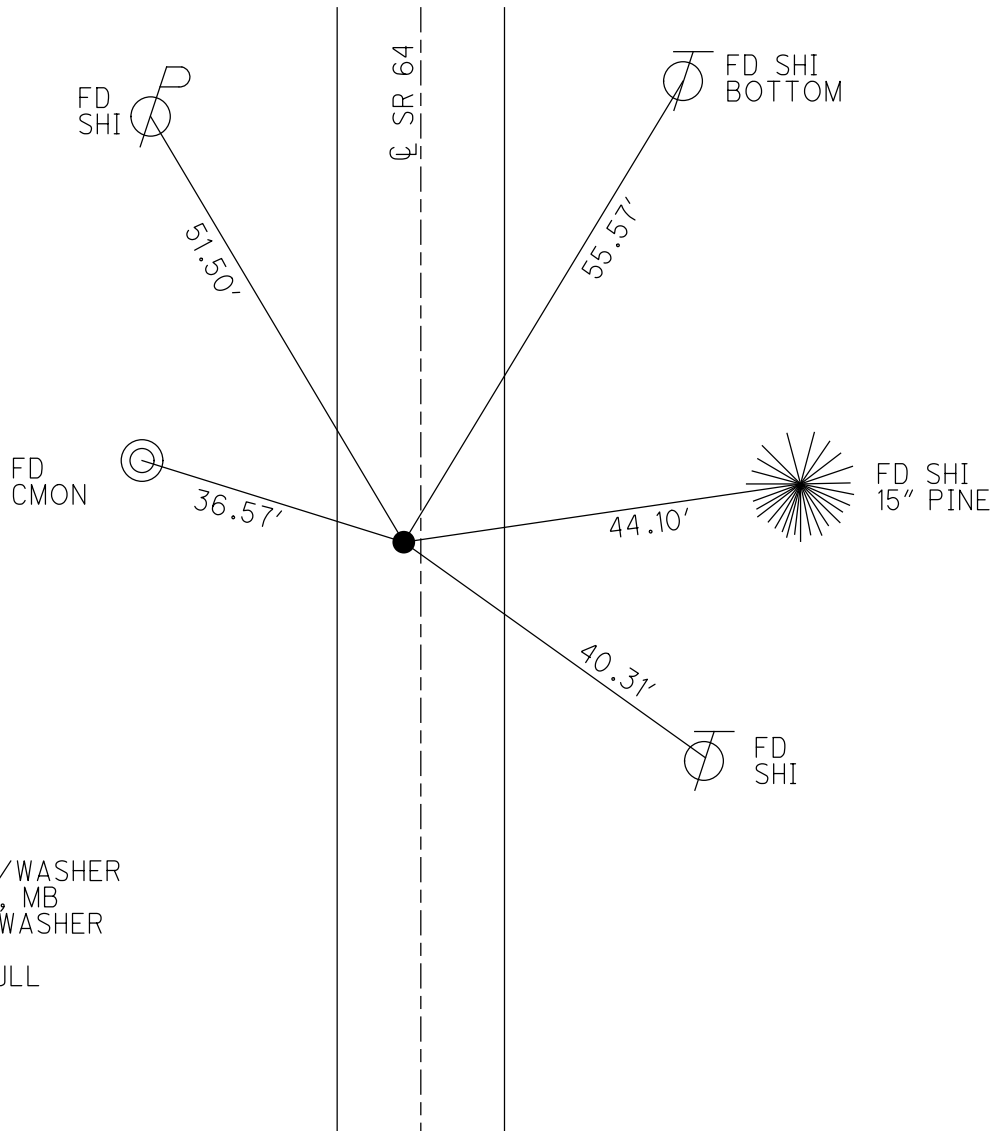
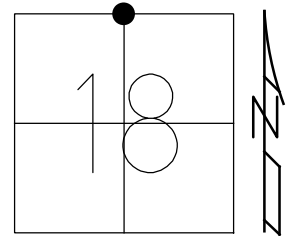
STATION: 629+74.03

HORZ.DATUM: NAD83 (2011)

GEOID: 2012A

GRID: NORTHING: 698061.650

EASTING: 1592758.957



RECORD:  
 SET MAG/WASHER  
 10-12-04, MB  
 FD MAG/WASHER  
 REF56  
 3-6-19, JLL

O.D.O.T. DISTRICT 2 SURVEY OFFICE

PERSONNEL

REFERENCE NO. 56

SHEET 9 OF 10

NOTES HUSS

DATE 6-16-04

ROUTE SR 64

H.C. HOMAN

WEATHER CLOUDY

COUNTY LUCAS

R.C. HUSS

TEMP. 78°

TOWNSHIP SWANTON

SECTION 18

T 7 N R 9 E

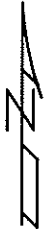
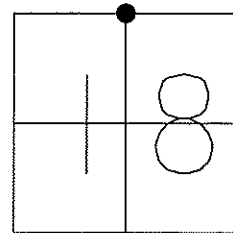
TYPE MONUMENT PK NAIL & WASHER

ON SURFACE - ~~BELOW~~ YES

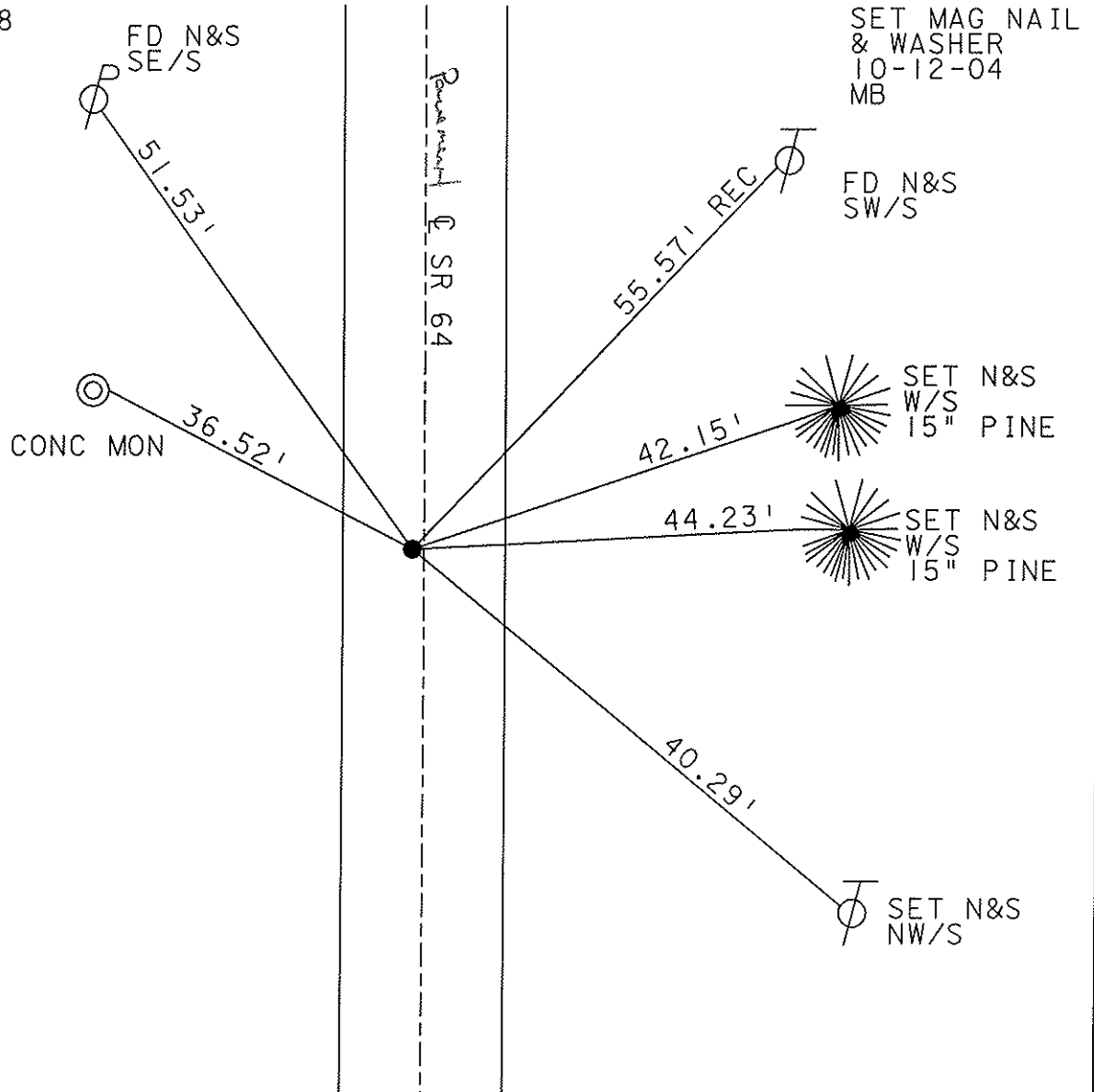
LEFT - ~~C PAVT - RIGHT~~ 1.3' LT

8.4 TO LT EDGE PAVEMENT

S.L.M. 630+38



CTR SEC 18



# O.D.O.T. DISTRICT 2 SURVEY OFFICE

PERSONNEL \_\_\_\_\_

REFERENCE NO. 56

SHEET 9 OF 9

NOTES J. Householder

H.C. D. Curtis

DATE Sept. 25, 1986

ROUTE S.R. 64

R.C. \_\_\_\_\_

WEATHER P. Cloudy

COUNTY Lucas

\_\_\_\_\_

TEMP. ± 75°

TOWNSHIP Swanton

\_\_\_\_\_

SECTION 18

T \_\_\_\_\_ R \_\_\_\_\_

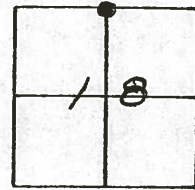
TYPE MONUMENT R.R. Spike

ON SURFACE - BELOW 2" Below

LEFT - ☉ PAV'T. - RIGHT 1.5' Left

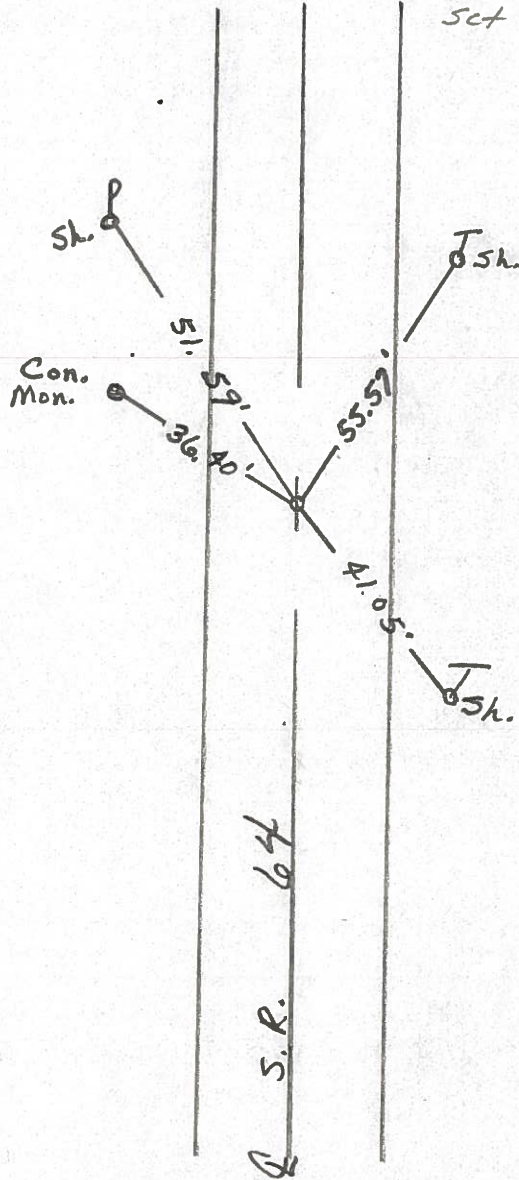
\_\_\_\_\_ TO \_\_\_\_\_ EDGE PAVEMENT

S.L.M. 630 + 38



Sec. Cor. 18-7

Set Small RR Spike 7/8/88 IRS



PERSONNEL TITLE PERSONNEL TITLE

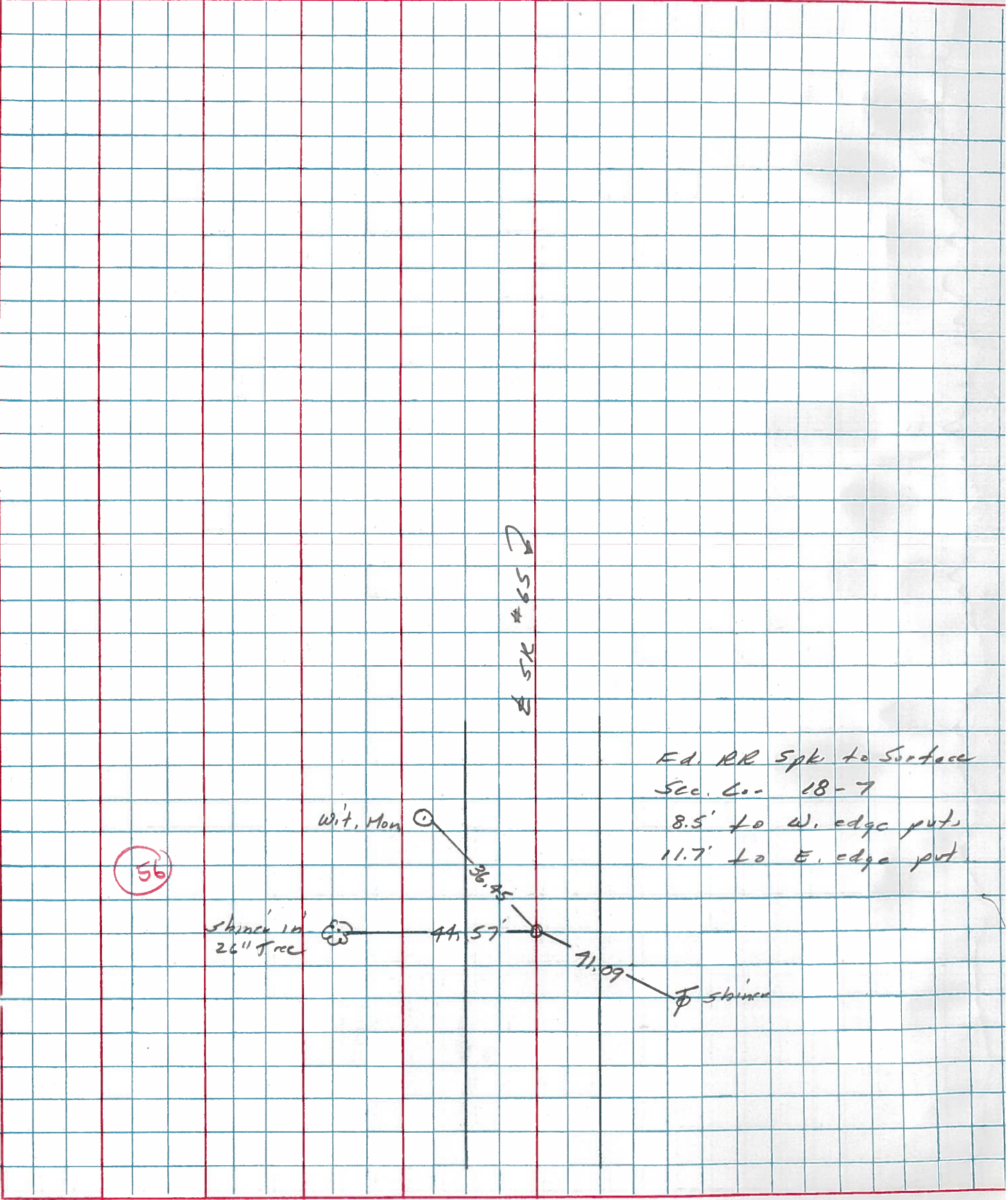
Stage  
Crew

COUNTY Lucas DATE 21 March 7

S. R. 69 WEATHER Cold

SEC. TEMP. 330

DESCRIPTION References to Control Points LEFT CENTER LINE RIGHT JOB NO.



Ed. RR Spk to Surface  
Sec. Co. 18-7  
8.5' to W. edge put  
11.7' to E. edge put

56

Wit. Mon

skinner in  
26" tree

36.45'

44.57'

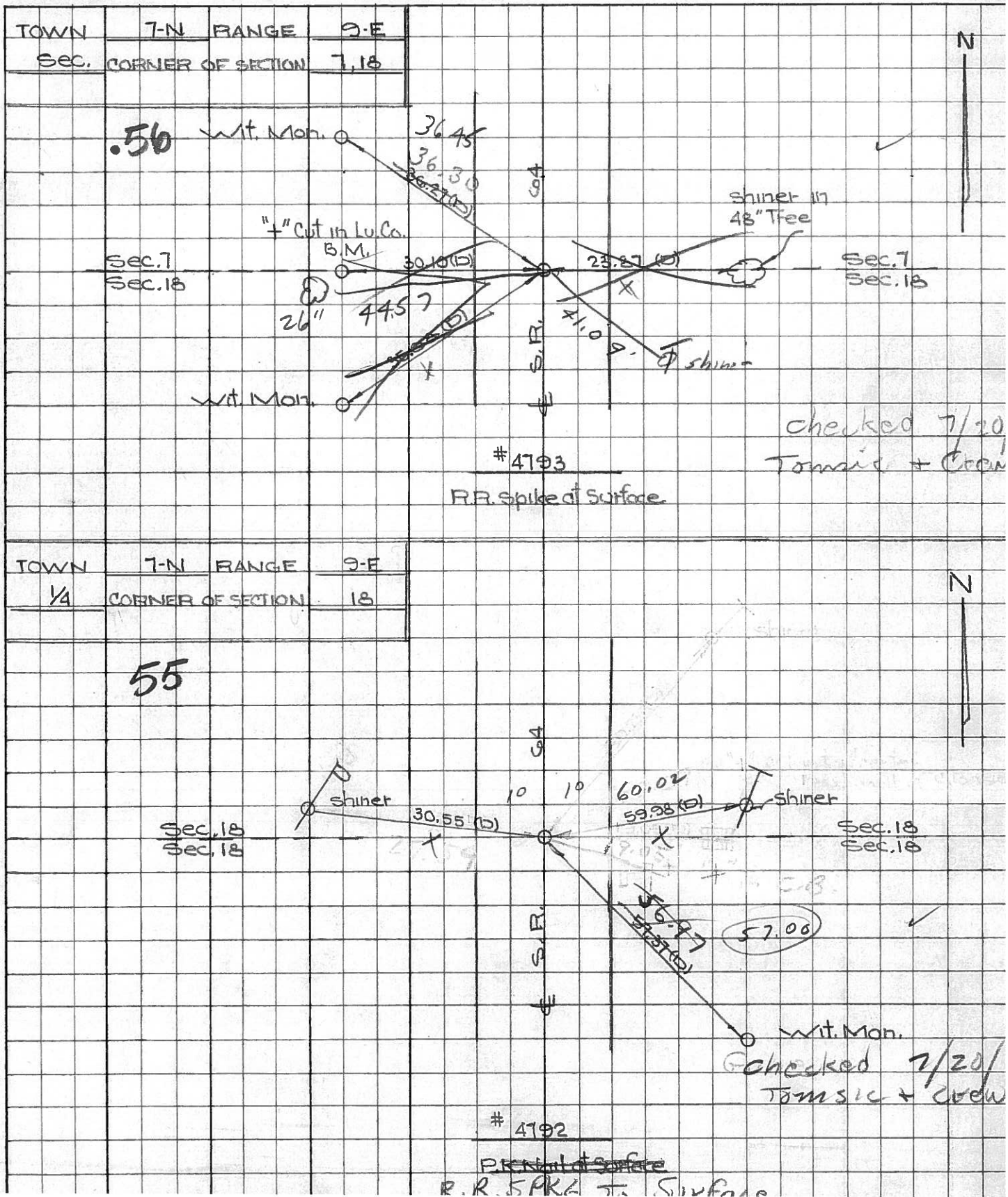
41.09'

S.R. # 65

skinner

PERSONNEL TITLE PERSONNEL TITLE COUNTY Lucas DATE Aug. 20, 1900  
 W. Denno \_\_\_\_\_ S. R. Co4 WEATHER warm  
 D. Curtis \_\_\_\_\_ SEC. \_\_\_\_\_ TEMP. 85°±  
 J. Teal \_\_\_\_\_  
 J. Brindley \_\_\_\_\_

DESCRIPTION S.R. Co4 - Ref. Mon. & Control Points JOB NO. 02994(0)



PERSONNEL TITLE PERSONNEL TITLE COUNTY Lucas DATE 4 Mar. 66  
 Stone Beck S. R. #14 WEATHER Windy  
 Brindley Schroeder SEC. Manclava Rd. to SR#2 TEMP. 48°

DESCRIPTION Refs. To Control Pts. JOB NO.  
 LEFT CENTER LINE RIGHT

DESCRIPTION	LEFT	CENTER LINE	RIGHT
#193	<b>.55</b> E & W. E Sec. 18 Fd. R.R. Spike To Surface 59.98 57.37	30.55 <del>30.59</del> 60.00 <del>62.27</del>	W. To Shiner in P.P. (D) E. To Shiner in T.P. (D) <del>S.E. To Shiner in 62" tree (D)</del> S.E. To W. Mon.
#192	Between E & W. E Sec. 18 N. Line Sec. 18 Could Not Find		No Refs. Loc. Co.
<b>Fb. R.R. spike 7/20/71 Tomasic + crew</b>			
#191	<b>56</b> N. Line Sec 18 Fd. R.R. Spike To Surface 36.27 30.10 35.08 23.87	36.07' 30.09' 35.08' 23.90'	N.W. To Corn. Wit. Mon. (D) W. To "7" in Lu. Co. B.M. (D) S.W. To Corn. Wit. Mon. (D) E. To Shiner in 78" Tree (D)
#113	Int. S.P. #2 Fd. "4" in "3/4" Brass Pin 1/2" Below Surface	27.06' 37.46' 45.09' 70.56'	N. To Corn. Wit. Mon. (D) S.E. To Shiner in L.P. (D) S.W. To Corn. Wit. Mon. (D) S.E. To N.W. Corn. Block Bldg. (D)

taken on  
20A