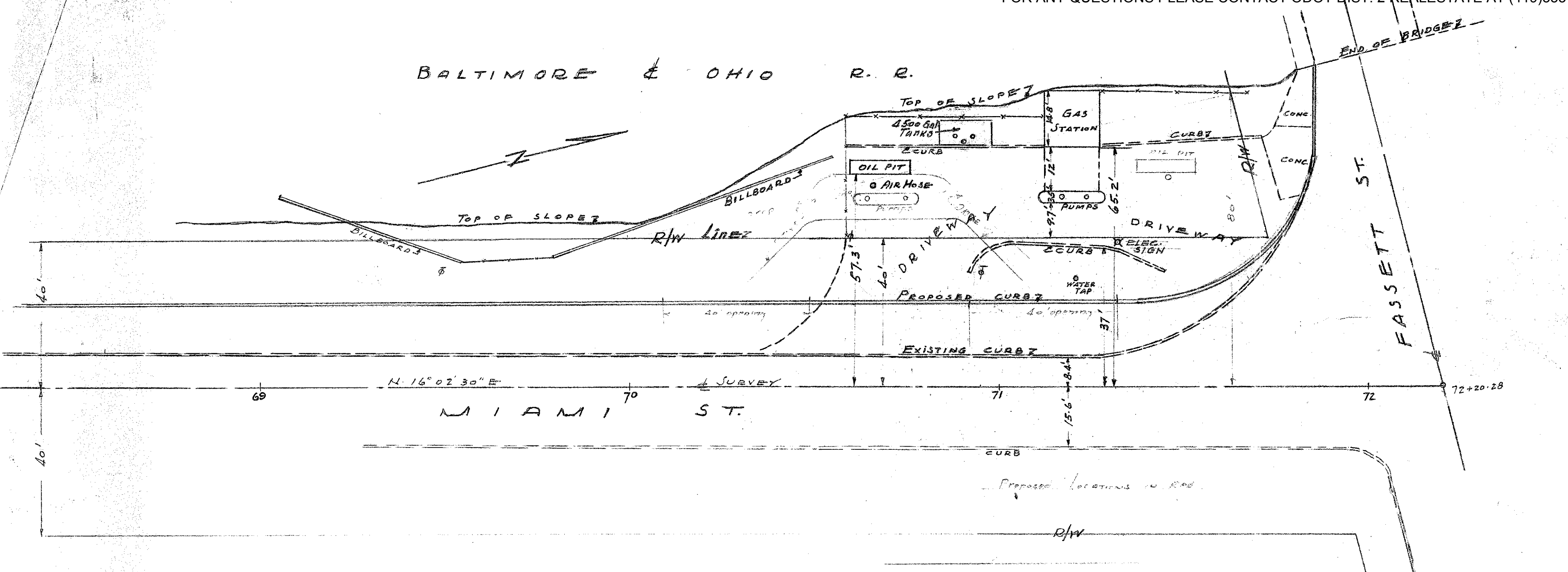


BALTIMORE & OHIO R. R.



PLAN OF
 INTERSECTION FASSETT & MIAMI STS.
 TOLEDO - OHIO
 SCALE 1" = 20'

LUC-65-0.49-1.36

Scanned July 1977

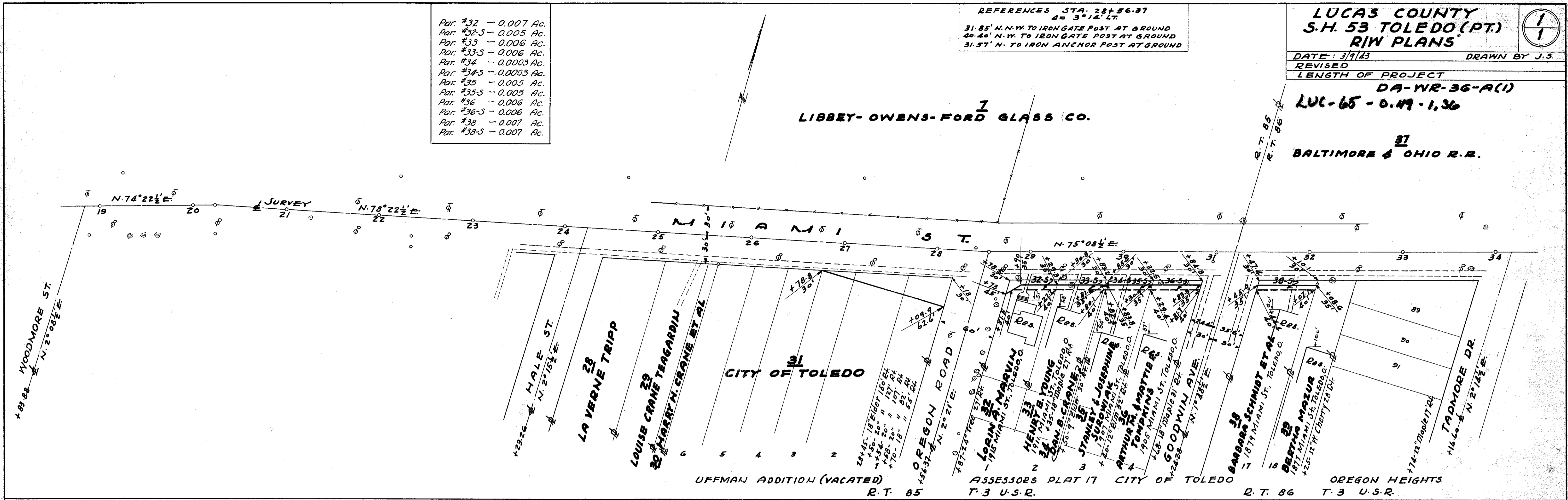
- Par. #32 - 0.007 Ac.
- Par. #32-S - 0.005 Ac.
- Par. #33 - 0.006 Ac.
- Par. #33-S - 0.006 Ac.
- Par. #34 - 0.0003 Ac.
- Par. #34-S - 0.0003 Ac.
- Par. #35 - 0.005 Ac.
- Par. #35-S - 0.005 Ac.
- Par. #36 - 0.006 Ac.
- Par. #36-S - 0.006 Ac.
- Par. #38 - 0.007 Ac.
- Par. #38-S - 0.007 Ac.

REFERENCES STA. 28+56.37
 Δ = 3° 14' LT.
 31.85' N. N.W. TO IRON GATE POST AT GROUND
 40.40' N. W. TO IRON GATE POST AT GROUND
 31.57' N. TO IRON ANCHOR POST AT GROUND

LUCAS COUNTY
S.H. 53 TOLEDO (PT.)
R/W PLANS

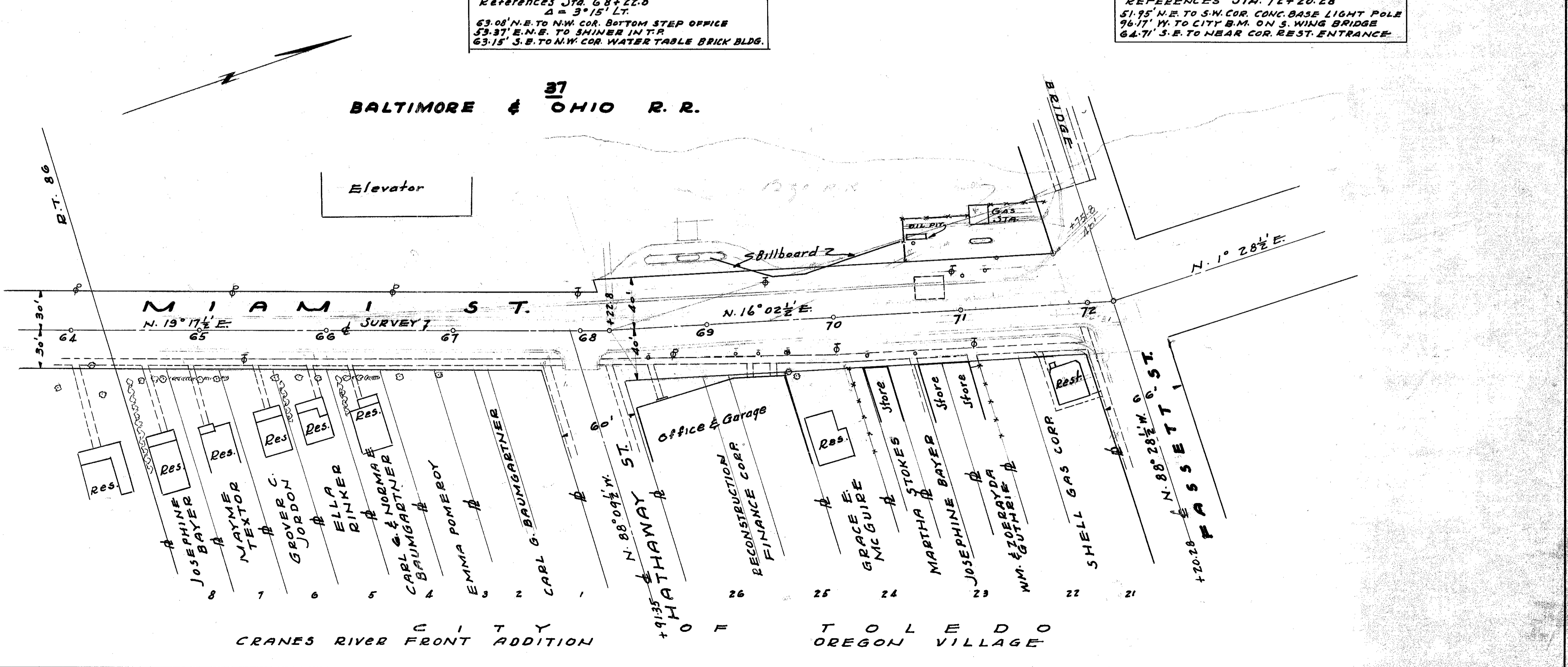
DATE: 3/9/43 DRAWN BY J.S.
 REVISED
 LENGTH OF PROJECT
DA-WR-36-A(1)
LUC-65-0.19-1.36

37
BALTIMORE & OHIO R.R.



References Sta. 68+22.8
 Δ = 3° 15' LT.
 63.08' N.E. TO N.W. COR. BOTTOM STEP OFFICE
 59.37' E.N.E. TO SHOWER IN T.P.
 63.15' S.E. TO N.W. COR. WATER TABLE BRICK BLDG.

REFERENCES STA. 72+20.28
 51.95' N.E. TO S.W. COR. CONC. BASE LIGHT POLE
 96.17' W. TO CITY B.M. ON S. WING BRIDGE
 64.71' S.E. TO NEAR COR. REST. ENTRANCE



Records #2 C-21

C-21