

O.D.O.T. DISTRICT 2 SURVEY OFFICE (USE ONLY)

PERSONNEL

REFERENCE NO. 1

SHEET 1 OF 14

NOTES LOEHRKE
 H.C. CANTERBURY
 R.C. HERMILLER
VOGEL/PRUNTY

DATE 7/7/94
 WEATHER NICE
 TEMP. 74°

ROUTE SR 65
 COUNTY LUCAS
 TOWNSHIP 12 MILE RESERVE
 SECTION RT 83
 T 3 US R E

DWG BY NIESE PID _____

TYPE MONUMENT McDONALD PROUDFOOT DISK

~~ON SURFACE~~ - BELOW 2 1/2"

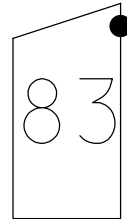
OFFSET \odot PAVEMENT 5.8' LT : ~~RT~~

19.0' TO LT EDGE PAVEMENT

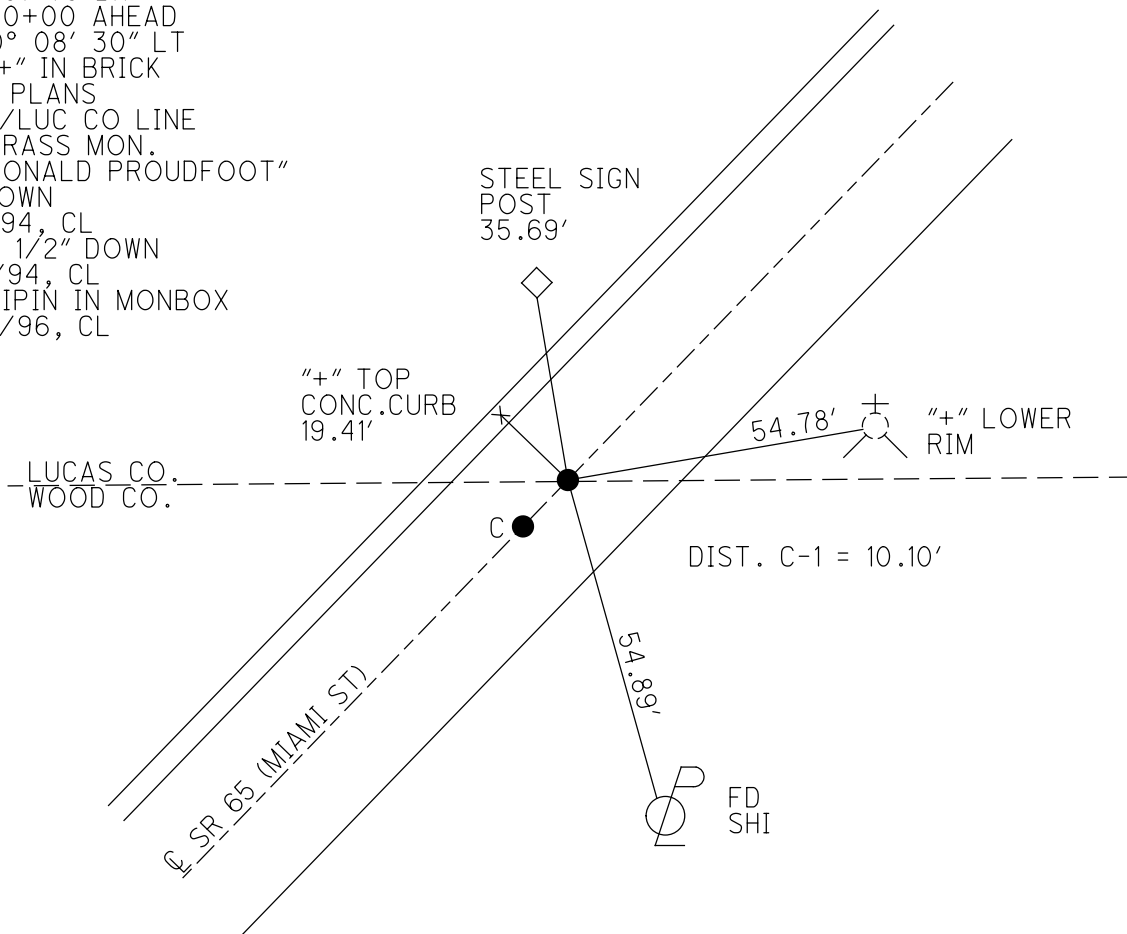
STATION: 0+00

HORZ. DATUM: _____ GEOID: _____

GRID: NORTHING: _____ EASTING: _____



RECORD: P.I.
 STA. 81+75 BK
 STA. 0+00 AHEAD
 $\Delta = 0^\circ 08' 30''$ LT
 FD "+" IN BRICK
 1966 PLANS
 WOO/LUC CO LINE
 FD BRASS MON.
 "McDONALD PROUDFOOT"
 3" DOWN
 4/1/94, CL
 FD 2 1/2" DOWN
 7/7/94, CL
 SET IPIN IN MONBOX
 8/15/96, CL



O.D.O.T. DISTRICT 2 SURVEY OFFICE (USE ONLY)

PERSONNEL _____

REFERENCE NO. 2

SHEET 2 OF 14

NOTES CITY _____ DATE 1/13/92

H.C. OF _____ WEATHER _____

R.C. TOLEDO TEMP. _____

ROUTE _____ SR 65

COUNTY _____ LUCAS

TOWNSHIP 12 MILE RESERVE

SECTION _____ RT 84

DWG BY NIESE PID _____

T 3 US R E

TYPE MONUMENT CMON W/ REBAR

ON SURFACE - ~~BELOW~~ ON

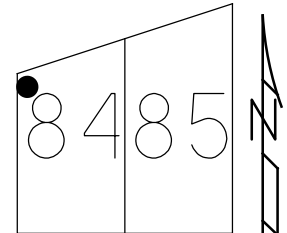
OFFSET \odot PAVEMENT _____ LT : RT

_____ TO _____ EDGE PAVEMENT

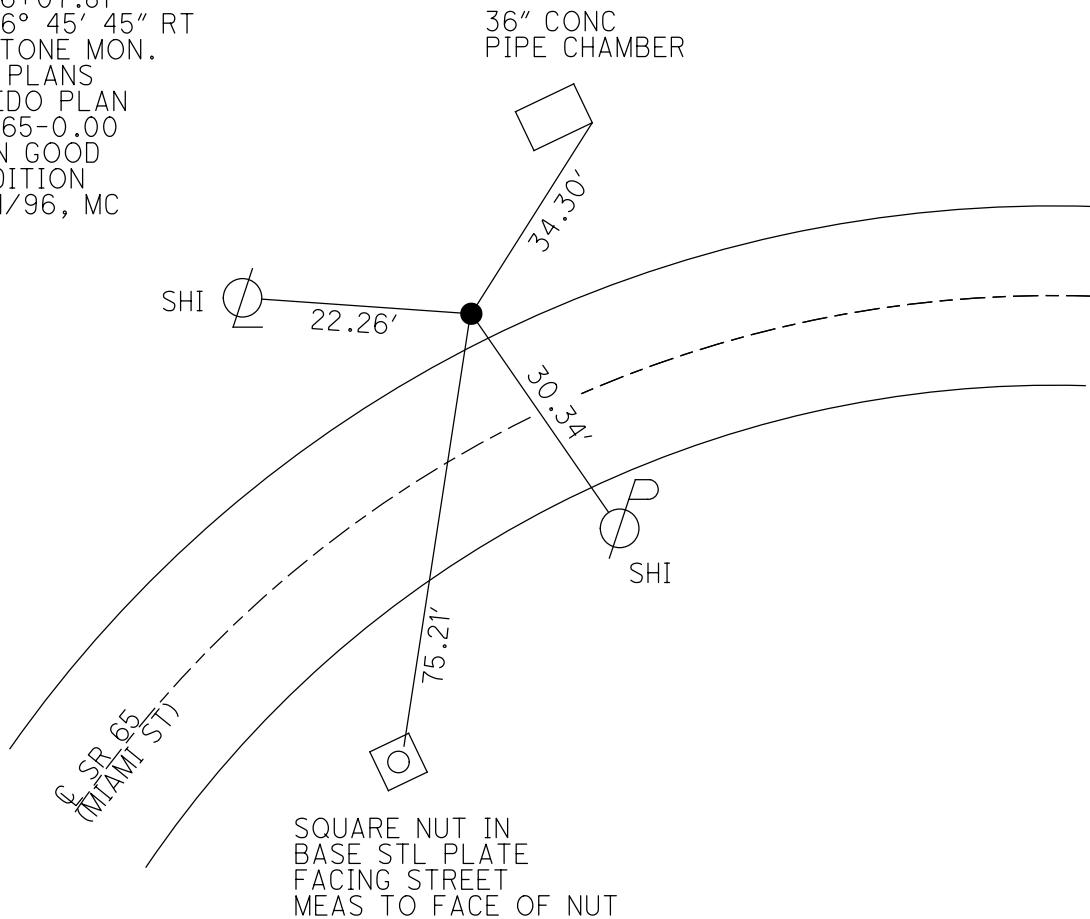
STATION: 6+07.81

HORZ. DATUM: _____ GEOID: _____

GRID: NORTHING: _____ EASTING: _____



RECORD: P.I.
 STA. 6+07.81
 $\Delta = 26^\circ 45' 45''$ RT
 FD STONE MON.
 1966 PLANS
 TOLEDO PLAN
 LUC-65-0.00
 FD IN GOOD
 CONDITION
 12/31/96, MC



O.D.O.T. DISTRICT 2 SURVEY OFFICE (USE ONLY)

PERSONNEL _____

REFERENCE NO. 3

SHEET 3 OF 14

NOTES CITY _____ DATE 1/13/92

H.C. OF _____ WEATHER _____

R.C. TOLEDO _____ TEMP. _____

ROUTE _____ SR 65

COUNTY _____ LUCAS

TOWNSHIP 12 MILE RESERVE

SECTION _____ RT 84

DWG BY NIESE _____ PID _____

T 3 US R E

TYPE MONUMENT BRASS PLATE

ON SURFACE - ~~BELOW~~ ON _____

OFFSET \odot PAVEMENT _____ - _____ LT : RT

_____ TO _____ EDGE PAVEMENT

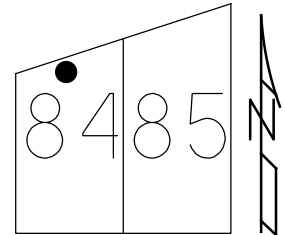
STATION: 10+86.48

HORZ. DATUM: _____

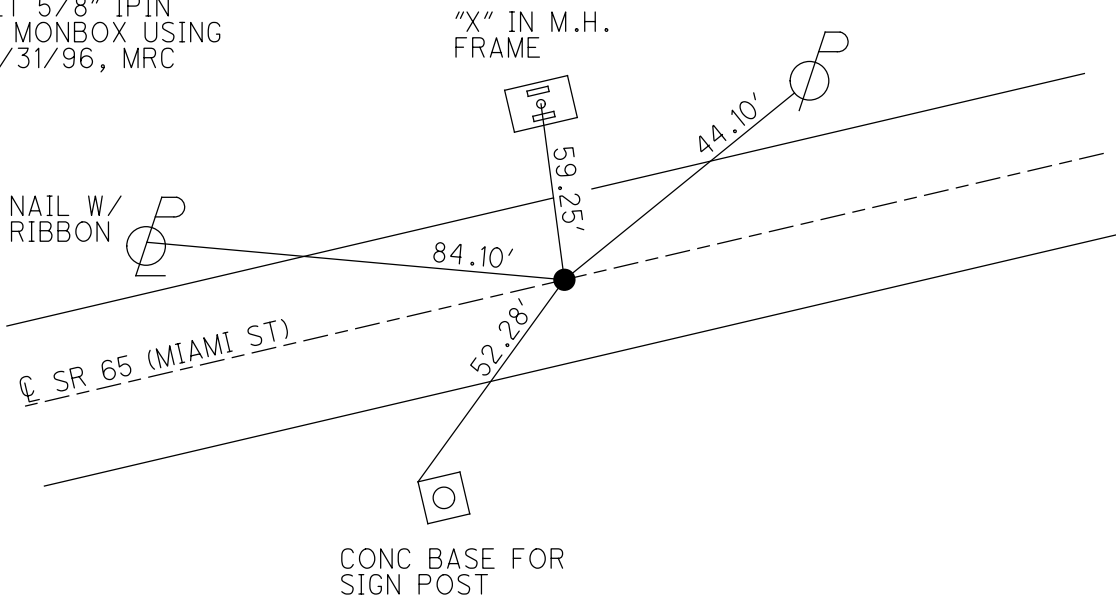
GEOID: _____

GRID: NORTHING: _____

EASTING: _____



RECORD:
 STA. 10+86.55
 FD R.R. SPIKE
 1966 PLANS
 TOLEDO PLAN
 LUC-SR65-0.00
 FD BRASS PLATE
 8/24/71.TOMSIC
 1/13/97, TOLEDO
 SET 5/8" IPIN
 IN MONBOX USING
 12/31/96, MRC



O.D.O.T. DISTRICT 2 SURVEY OFFICE (USE ONLY)

PERSONNEL

REFERENCE NO. 3 A

SHEET 4 OF 14

NOTES TOMSIK

DATE 8/24/71

ROUTE SR 65

H.C. VANYO

WEATHER FAIR

COUNTY LUCAS

R.C. GRANATA

TEMP. _____

TOWNSHIP 12 MILE RESERVE

JACKSON

SECTION RT 84

DWG BY NIESE

PID _____

T 3 US R E

TYPE MONUMENT P.K. NAIL

ON SURFACE - ~~BELOW~~ ON

OFFSET 0 PAVEMENT ON LT : RT

- TO - EDGE PAVEMENT

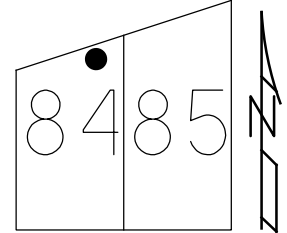
STATION: 12+31.26

HORZ. DATUM: _____

GEOID: _____

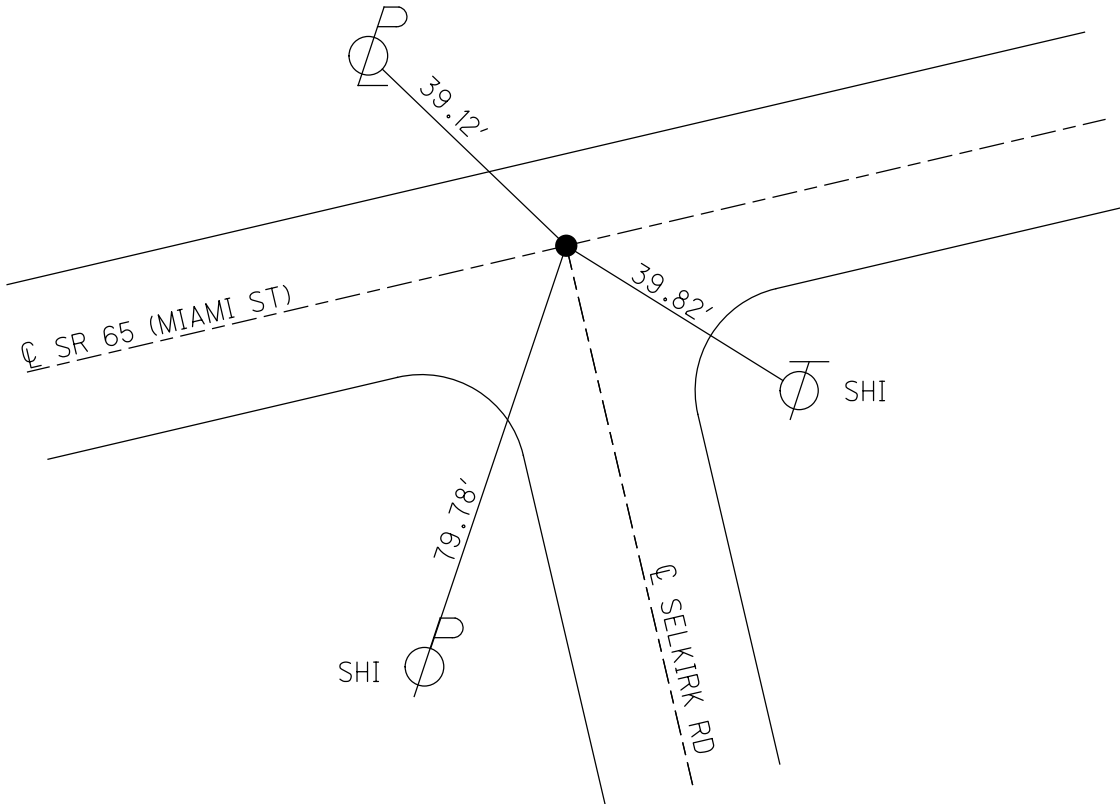
GRID: NORTHING: _____

EASTING: _____



RECORD:
STA. 12+31.26
1966 PLANS
FD P.K. NAIL
8/24/71, TOMSIK

PUNCH HOLE IN
CENTER OF EAST BOLT
OF METAL POLE BASE



O.D.O.T. DISTRICT 2 SURVEY OFFICE (USE ONLY)

PERSONNEL

REFERENCE NO. 4

SHEET 5 OF 14

NOTES VAN DUSEN

DATE 1/7/97

ROUTE SR 65

H.C. ROUSOS

WEATHER CLOUDY

COUNTY LUCAS

R.C. MOSER
CANTERBURY

TEMP. 22°

TOWNSHIP 12 MILE RESERVE

DWG BY NIESE PID _____

SECTION RT 84

T 3 US R E

TYPE MONUMENT P.K./WASHER

ON SURFACE - ~~BELOW~~ ON

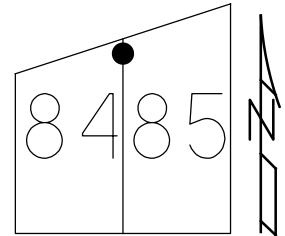
OFFSET Q PAVEMENT _____ LT : RT

- TO - EDGE PAVEMENT

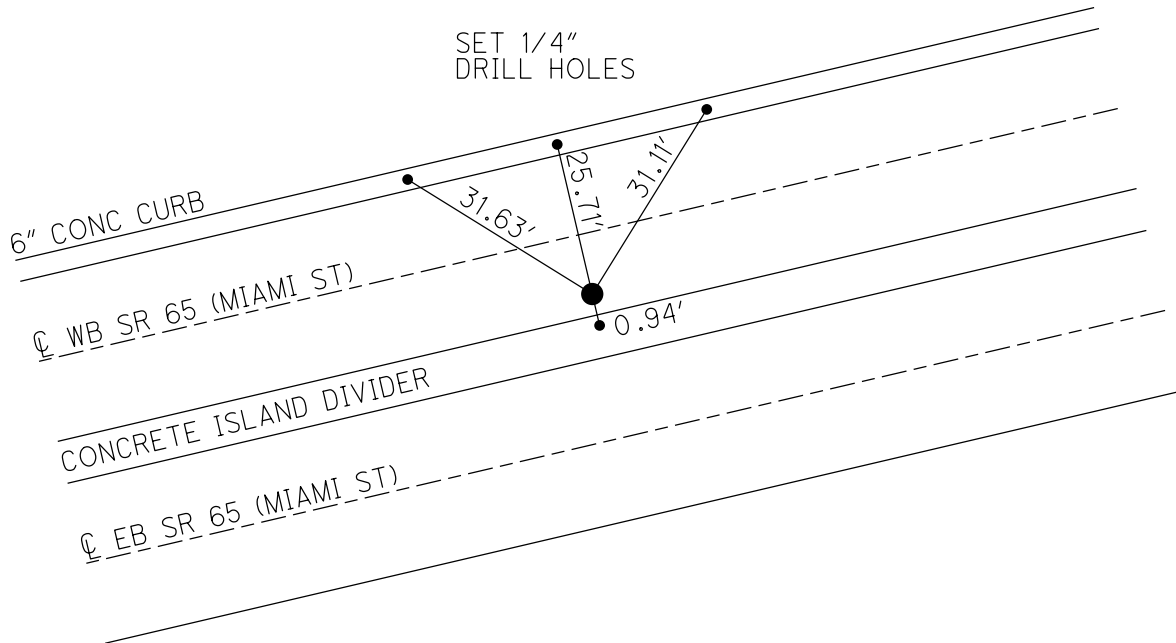
STATION: 17+42.40

HORZ. DATUM: _____ GEOID: _____

GRID: NORTHING: _____ EASTING: _____



RECORD: P.I.
STA 17+92.8
 $\Delta = 3^\circ 09' 15''$ RT
1966 PLANS
SET P.K./WASHER
1/7/97, TR



O.D.O.T. DISTRICT 2 SURVEY OFFICE (USE ONLY)

PERSONNEL _____ REFERENCE NO. 5 SHEET 6 OF 14

NOTES CITY _____ DATE 1/13/92 _____

H.C. OF _____ WEATHER _____

R.C. TOLEDO _____ TEMP. _____

ROUTE SR 65 _____

COUNTY LUCAS _____

TOWNSHIP 12 MILE RESERVE _____

SECTION RT 85 _____

DWG BY NIESE _____ PID _____

T 3 US R E

TYPE MONUMENT MONUMENT _____

ON SURFACE - ~~BELOW~~ ON _____

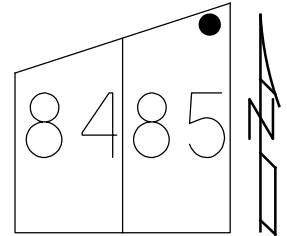
OFFSET \varnothing PAVEMENT _____ - _____ LT : RT

- TO - EDGE PAVEMENT

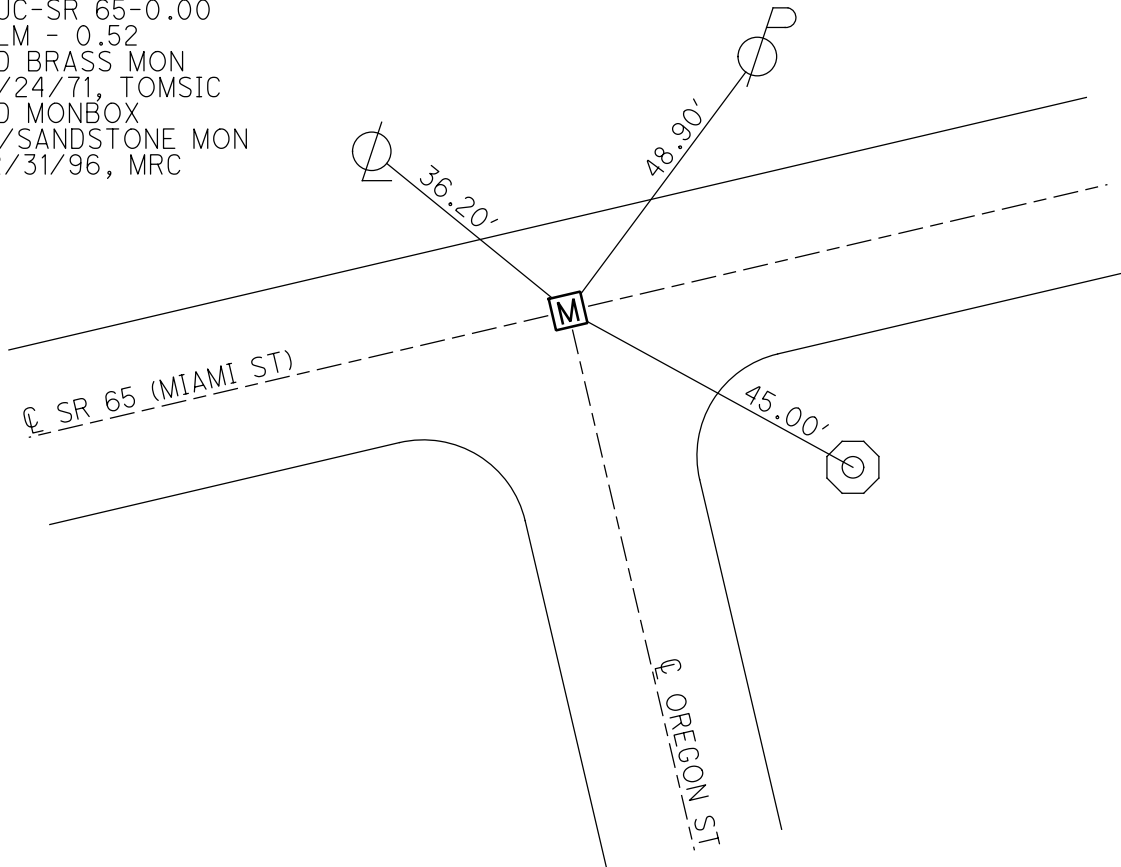
STATION: 28+54.73 _____

HORIZ.DATUM: _____ GEOID: _____

GRID: NORTHING: _____ EASTING: _____

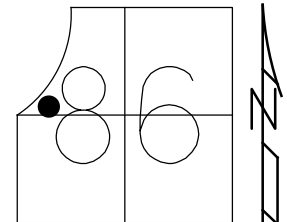


RECORD: P.I.
 STA. 28+54.73
 $\Delta = 2^\circ 19' 15''$ LT
 FD STONE MON.
 1966 PLANS
 TOLEDO PLAN
 LUC-SR 65-0.00
 SLM - 0.52
 FD BRASS MON
 8/24/71, TOMSIC
 FD MONBOX
 W/SANDSTONE MON
 12/31/96, MRC

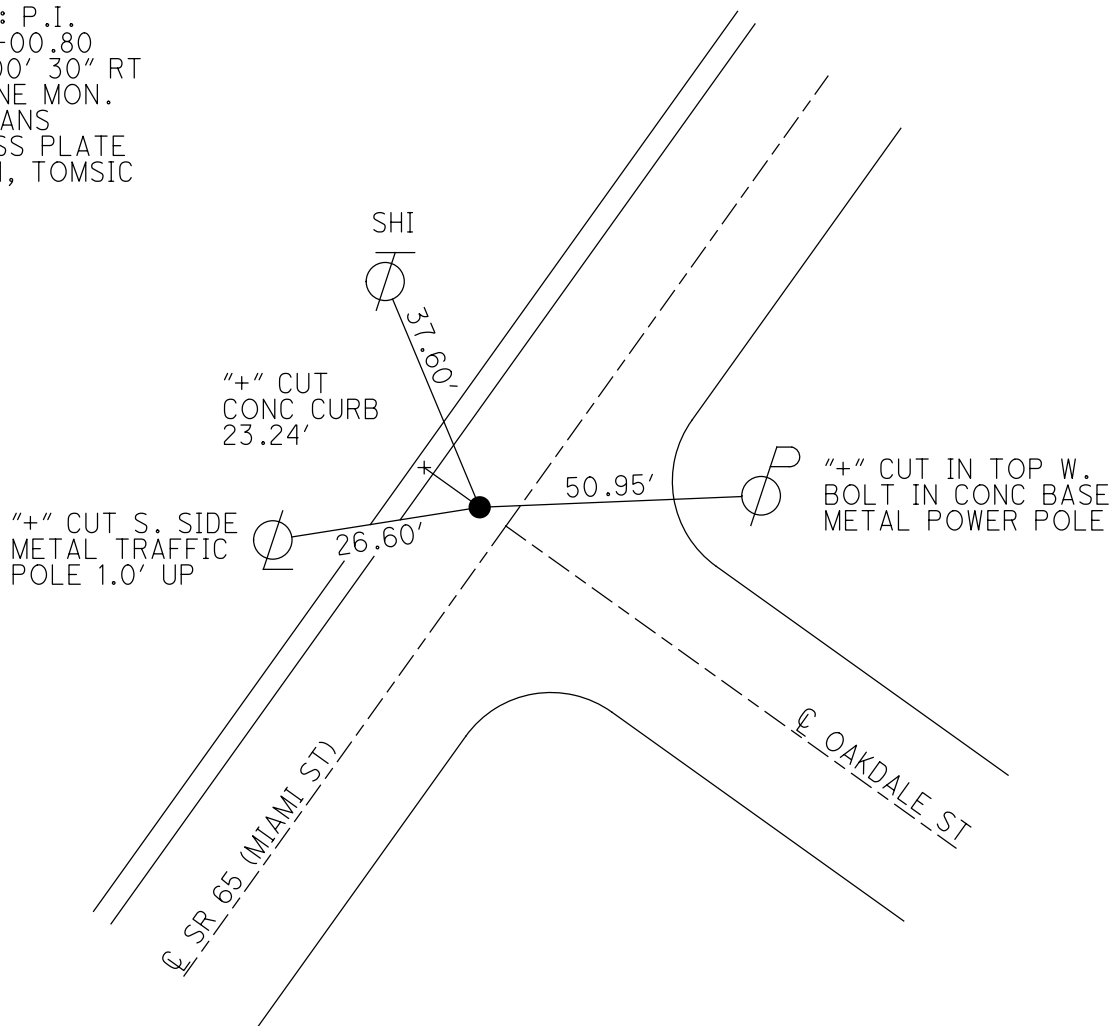


O.D.O.T. DISTRICT 2 SURVEY OFFICE (USE ONLY)

PERSONNEL _____	REFERENCE NO. <u>6</u>	SHEET <u>7</u> OF <u>14</u>
NOTES <u>TOMSIK</u>	DATE <u>8/24/71</u>	ROUTE <u>SR 65</u>
H.C. <u>VANYO</u>	WEATHER <u>FAIR</u>	COUNTY <u>LUCAS</u>
R.C. <u>GRANATA</u>	TEMP. <u>88°</u>	TOWNSHIP <u>12 MILE RESERVE</u>
<u>JACKSON</u>		SECTION <u>RT 85</u>
DWG BY <u>NIESE</u>	PID _____	T <u>3</u> U <u>S</u> R <u>E</u>
TYPE MONUMENT <u>BRASS PLATE</u>		
ON SURFACE - BELOW <u>ON</u>		
OFFSET <u>☉</u> PAVEMENT _____ LT : RT		
_____ TO _____ EDGE PAVEMENT		
STATION: <u>52+00.80</u>		
HORZ. DATUM: _____	GEOID: _____	
GRID: NORTHING: _____	EASTING: _____	



RECORD: P.I.
 STA. 52+00.80
 $\Delta = 0^\circ 00' 30''$ RT
 FD STONE MON.
 1966 PLANS
 FD BRASS PLATE
 8/24/71, TOMSIK



O.D.O.T. DISTRICT 2 SURVEY OFFICE (USE ONLY)

PERSONNEL _____

REFERENCE NO. 7

SHEET 8 OF 14

NOTES TOMSIK DATE 8/24/71
 H.C. VANYO WEATHER FAIR
 R.C. GRANATA TEMP. 88°
JACKSON

ROUTE SR 65
 COUNTY LUCAS
 TOWNSHIP 12 MILE RESERVE
 SECTION RT 85
 T 3 US R E

DWG BY NIESE PID _____

TYPE MONUMENT BRASS PLATE

ON SURFACE - ~~BELOW~~ ON

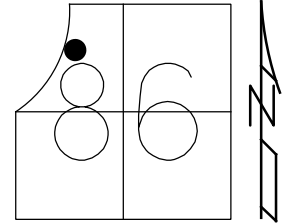
OFFSET 0 PAVEMENT _____ LT : RT

- TO - EDGE PAVEMENT

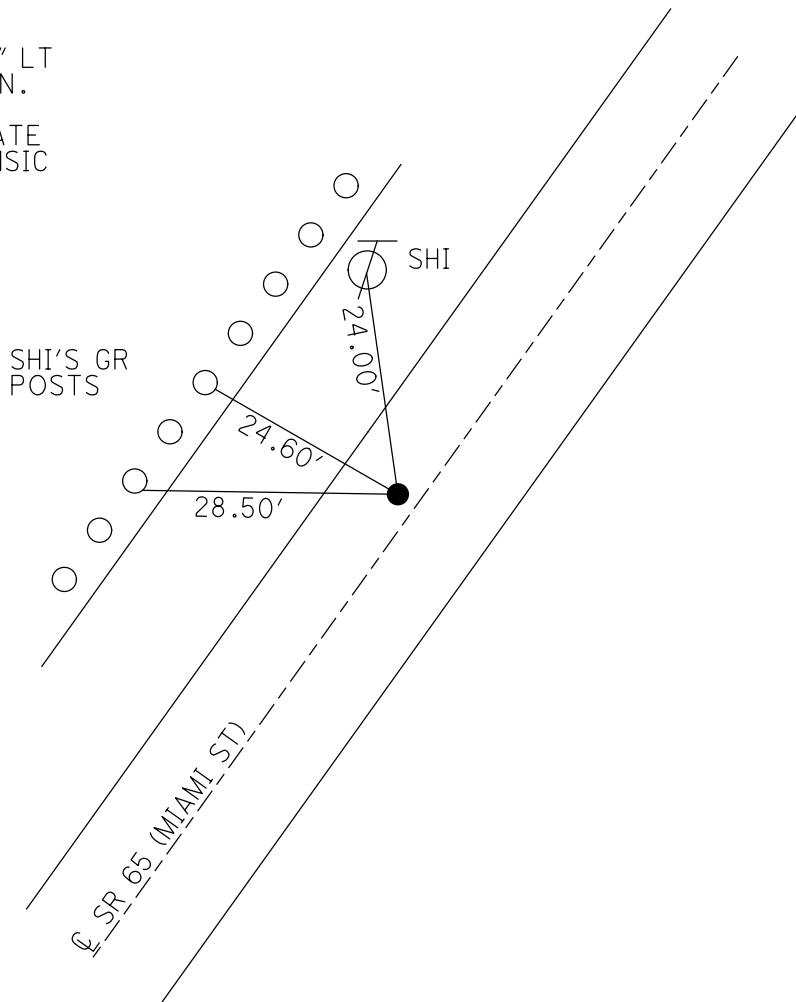
STATION: 59+19.65

HORZ. DATUM: _____ GEOID: _____

GRID: NORTHING: _____ EASTING: _____



RECORD: P.I.
 STA. 59+19.65
 $\Delta = 2^\circ 07' 00''$ LT
 FD STONE MON.
 1966 PLANS
 FD BRASS PLATE
 8/24/71, TOMSIK



O.D.O.T. DISTRICT 2 SURVEY OFFICE (USE ONLY)

PERSONNEL _____

REFERENCE NO. 8

SHEET 9 OF 14

NOTES TOMSIK

DATE 8/24/71

ROUTE SR 65

H.C. VANYO

WEATHER FAIR

COUNTY LUCAS

R.C. GRANATA
JACKSON

TEMP. 88°

TOWNSHIP 12 MILE RESERVE

DWG BY NIESE PID _____

SECTION RT 85

T 3 US R E

TYPE MONUMENT P.K. IN CMON

ON SURFACE - ~~BELOW~~ ON

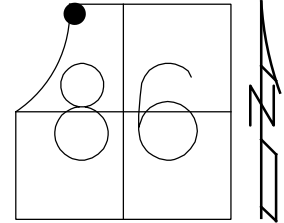
OFFSET \varnothing PAVEMENT - LT : RT

- TO - EDGE PAVEMENT

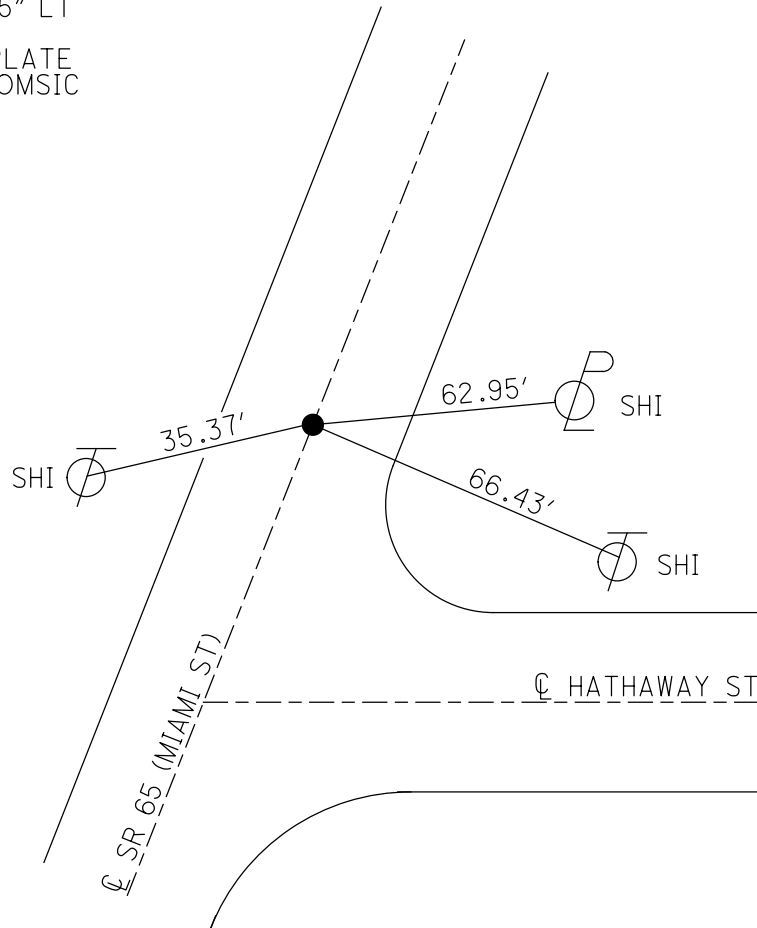
STATION: 68+12.38

HORZ. DATUM: _____ GEOID: _____

GRID: NORTHING: _____ EASTING: _____



RECORD: P.I.
STA. 68+12.38
 $\Delta = 3^{\circ} 21' 45''$ LT
1966 PLANS
FD BRASS PLATE
8/24/71, TOMSIK



O.D.O.T. DISTRICT 2 SURVEY OFFICE (USE ONLY)

PERSONNEL _____

REFERENCE NO. 9

SHEET 10 OF 14

NOTES JUHASZ DATE 10/26/77

H.C. SZOLLOZI WEATHER _____

R.C. WILLIAMS TEMP. _____

ROUTE SR 65

COUNTY LUCAS

TOWNSHIP 12 MILE RESERVE

SECTION RT 87

DWG BY NIESE PID _____

T 3 US R E

TYPE MONUMENT BRASS PLATE

ON SURFACE - ~~BELOW~~ ON _____

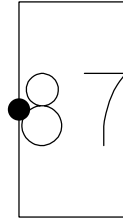
OFFSET ϕ PAVEMENT _____ LT : RT

_____ TO _____ EDGE PAVEMENT

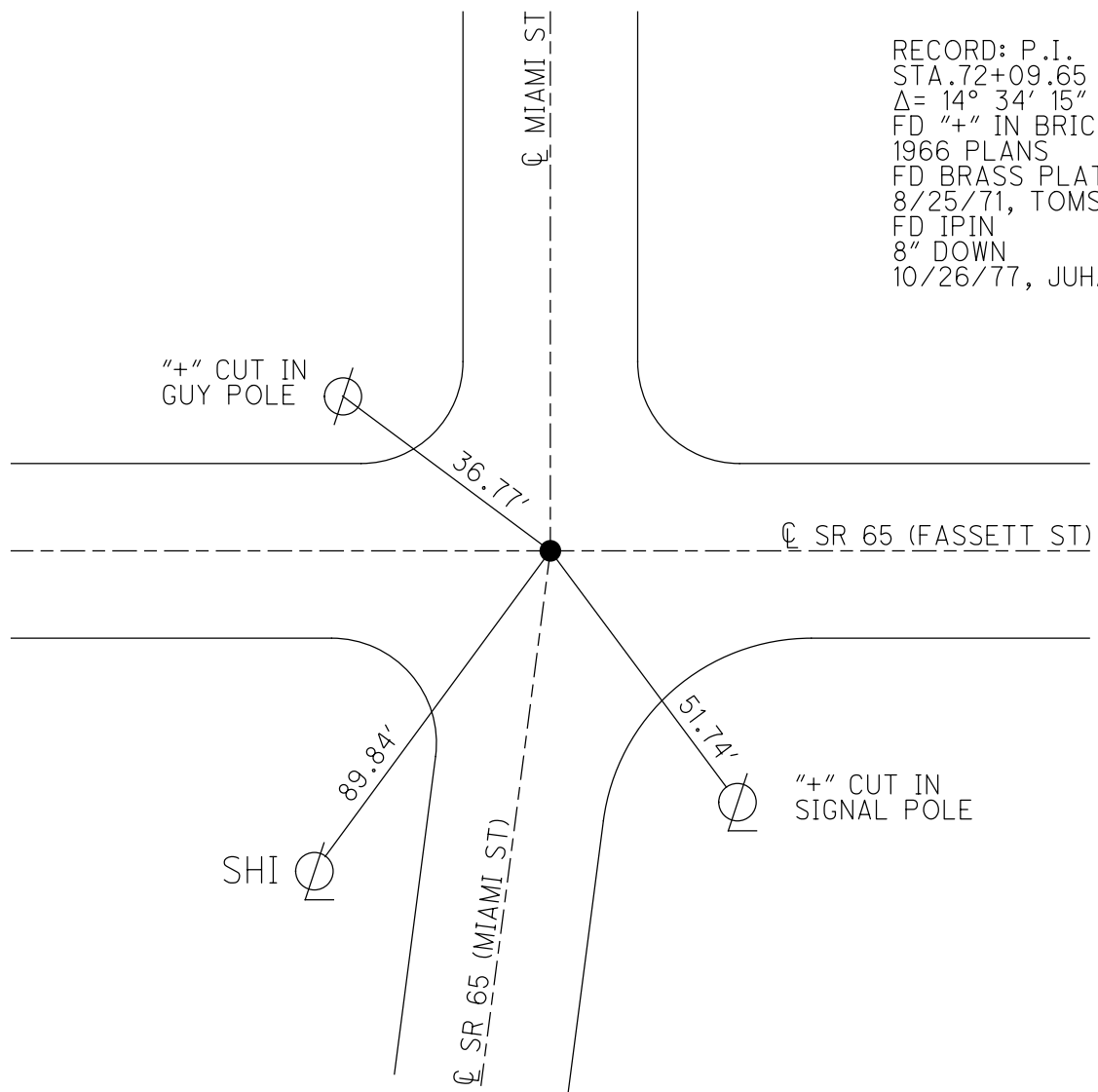
STATION: 72+09.65

HORZ.DATUM: _____ GEOID: _____

GRID: NORTHING: _____ EASTING: _____



RECORD: P.I.
 STA. 72+09.65
 $\Delta = 14^\circ 34' 15''$ LT
 FD "+" IN BRICK
 1966 PLANS
 FD BRASS PLATE
 8/25/71, TOMSIC
 FD IPIN
 8" DOWN
 10/26/77, JUHASZ



O.D.O.T. DISTRICT 2 SURVEY OFFICE (USE ONLY)

PERSONNEL

REFERENCE NO. 9 A

SHEET 11 OF 14

NOTES JUHASZ

DATE 10/26/77

ROUTE SR 65

H.C. SZOLLOZI

WEATHER _____

COUNTY LUCAS

R.C. WILLIAMS

TEMP. _____

TOWNSHIP 12 MILE RESERVE

DWG BY NIESE PID _____

SECTION RT 87

T 3 US R E

TYPE MONUMENT STONE MONUMENT

~~ON SURFACE~~ - BELOW 12"

OFFSET \odot PAVEMENT _____ LT : RT

_____ TO _____ EDGE PAVEMENT

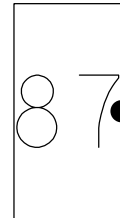
STATION: 74+97.6

HORZ. DATUM: _____

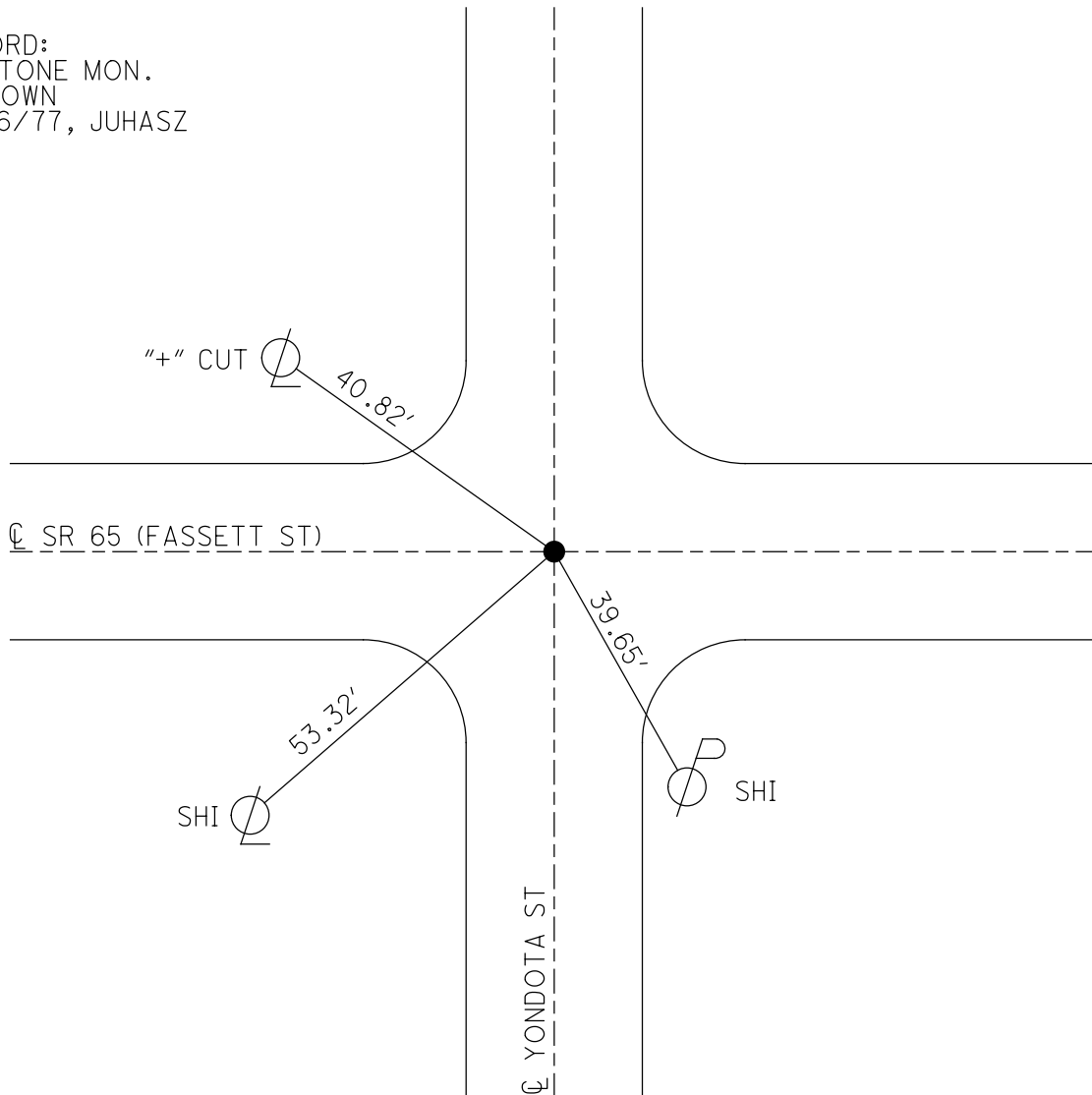
GEOID: _____

GRID: NORTHING: _____

EASTING: _____



RECORD:
FD STONE MON.
12" DOWN
10/26/77, JUHASZ



O.D.O.T. DISTRICT 2 SURVEY OFFICE (USE ONLY)

PERSONNEL

REFERENCE NO. 10

SHEET 12 OF 14

NOTES LEU

DATE 5/21/18

ROUTE SR 65

H.C. LEU

WEATHER SUNNY

COUNTY LUCAS

R.C. HAGEMeyer
RHOADES, TRENKA

TEMP. 66°

TOWNSHIP CITY OF TOLEDO

DWG BY NIESE PID 102953

SECTION 12

T 10 S R 7 E

TYPE MONUMENT MONBOX W/3/4" IPIN

~~ON SURFACE~~ - BELOW ON

OFFSET \odot PAVEMENT ON LT : RT

- TO - EDGE PAVEMENT

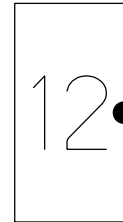
STATION: 83+95.2

HORIZ.DATUM: NAD83 2011

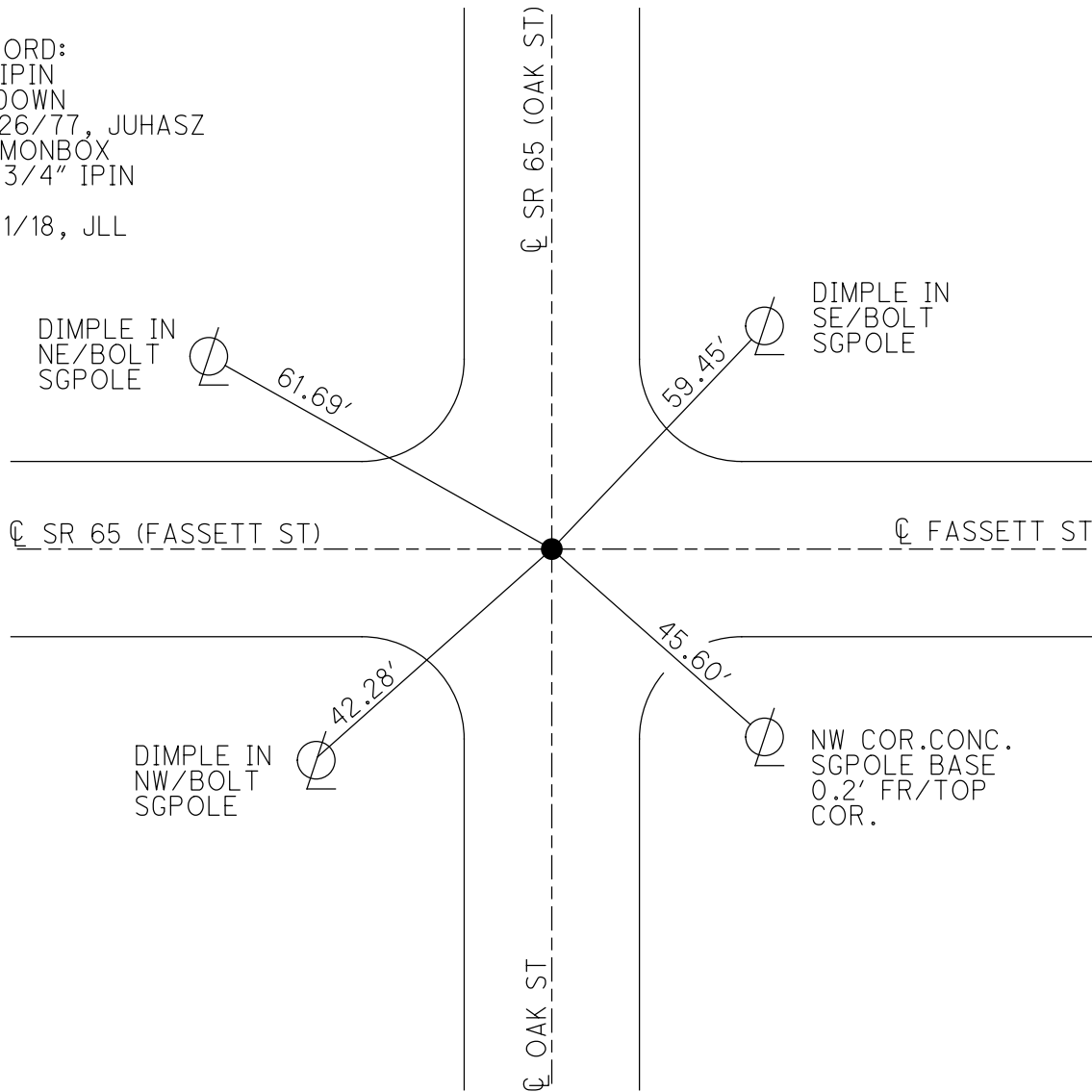
GEOID: NAVD88 2012A

GRID: NORTHING: 716554.758

EASTING: 1688262.210



RECORD:
FD IPIN
8" DOWN
10/26/77, JUHASZ
FD MONBOX
W/ 3/4" IPIN
CP1
5/21/18, JLL



O.D.O.T. DISTRICT 2 SURVEY OFFICE (USE ONLY)

PERSONNEL

REFERENCE NO. 11

SHEET 13 OF 14

NOTES LEU

DATE 5/21/18

ROUTE SR 65

H.C. LEU

WEATHER SUNNY

COUNTY LUCAS

R.C. HAGEMEYER
RHOADES, TRENKA

TEMP. 66°

TOWNSHIP CITY OF TOLEDO

DWG BY NIESE PID 102953

SECTION 12

T 10 S R 7 E

TYPE MONUMENT MONBOX W/IPIN

ON SURFACE - ~~BELOW~~ ON

OFFSET 0 PAVEMENT ON LT : RT

- TO - EDGE PAVEMENT

STATION: 94+59.20

HORIZ.DATUM: NAD83 2011

GEOID: NAVD88 2012A

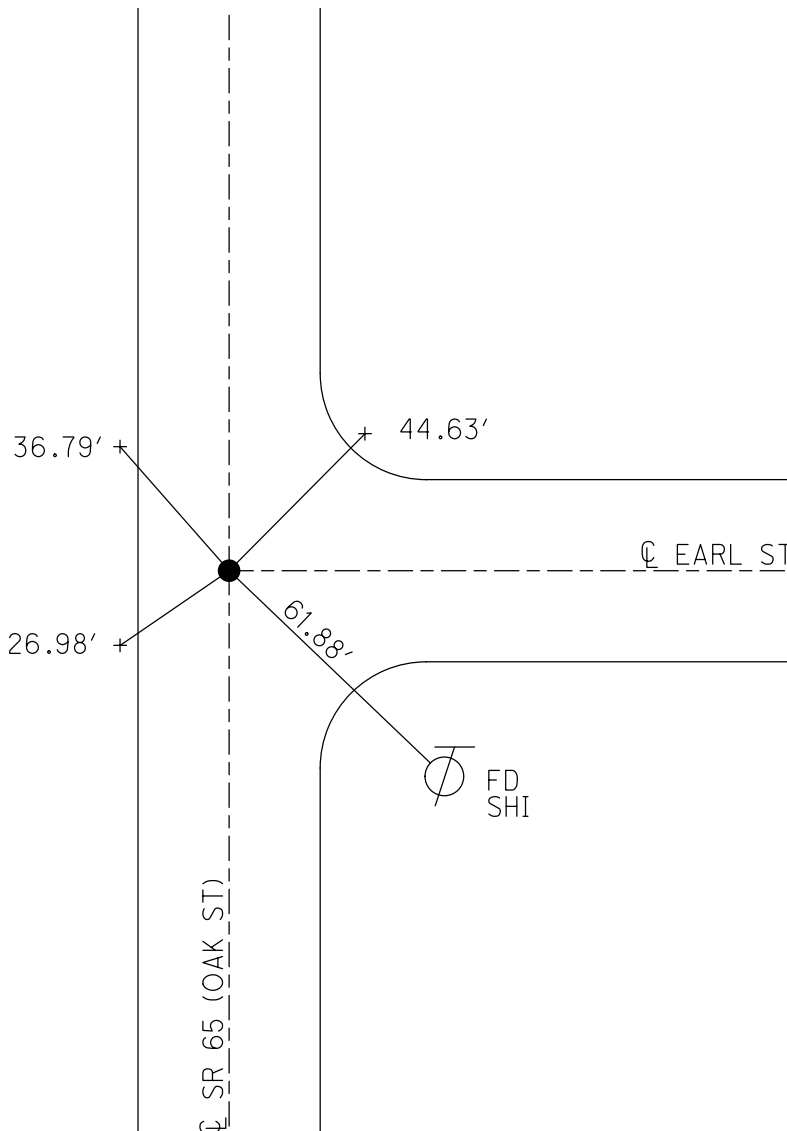
GRID: NORTHING: 717619.179

EASTING: 1688251.701



RECORD:
FD COVERED
MONBOX
8/25/71, TOMSIC
FD MONBOX
W/IPIN
CP2
5/21/18, JLL

SET "+" CUT
CURBS



O.D.O.T. DISTRICT 2 SURVEY OFFICE (USE ONLY)

PERSONNEL

REFERENCE NO. 12

SHEET 14 OF 14

NOTES LEU

DATE 5/21/18

ROUTE SR 65

H.C. LEU

WEATHER SUNNY

COUNTY LUCAS

R.C. HAGEMEYER

TEMP. 70°

TOWNSHIP CITY OF TOLEDO

RHOADES, TRENKA

SECTION 12

DWG BY NIESE PID 102953

T 10 S R 7 E

TYPE MONUMENT 1" IPIN

~~ON SURFACE~~ - BELOW 4"

OFFSET \odot PAVEMENT ON LT : RT

- TO - EDGE PAVEMENT

STATION: 110+23.19

HORIZ.DATUM: NAD83 2011

GEOID: NAVD88 2012A

GRID: NORTHING: 719182.628

EASTING: 1688237.303

