

O.D.O.T. DISTRICT 2 SURVEY OFFICE (USE ONLY)

PERSONNEL _____

REFERENCE NO. 1

SHEET 1 OF 14

NOTES LOEHRKE
 H.C. CANTERBURY
 R.C. HERMILLER
VOGEL/PRUNTY

DATE 7/7/94
 WEATHER NICE
 TEMP. 74°

ROUTE SR 65
 COUNTY LUCAS
 TOWNSHIP 12 MILE RESERVE
 SECTION RT 83
 T 3 US R E

DWG BY NIESE PID _____

TYPE MONUMENT McDONALD PROUDFOOT DISK

~~ON SURFACE~~ - BELOW 2 1/2"

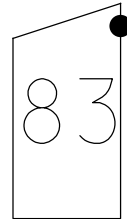
OFFSET \odot PAVEMENT 5.8' LT : ~~RT~~

19.0' TO LT EDGE PAVEMENT

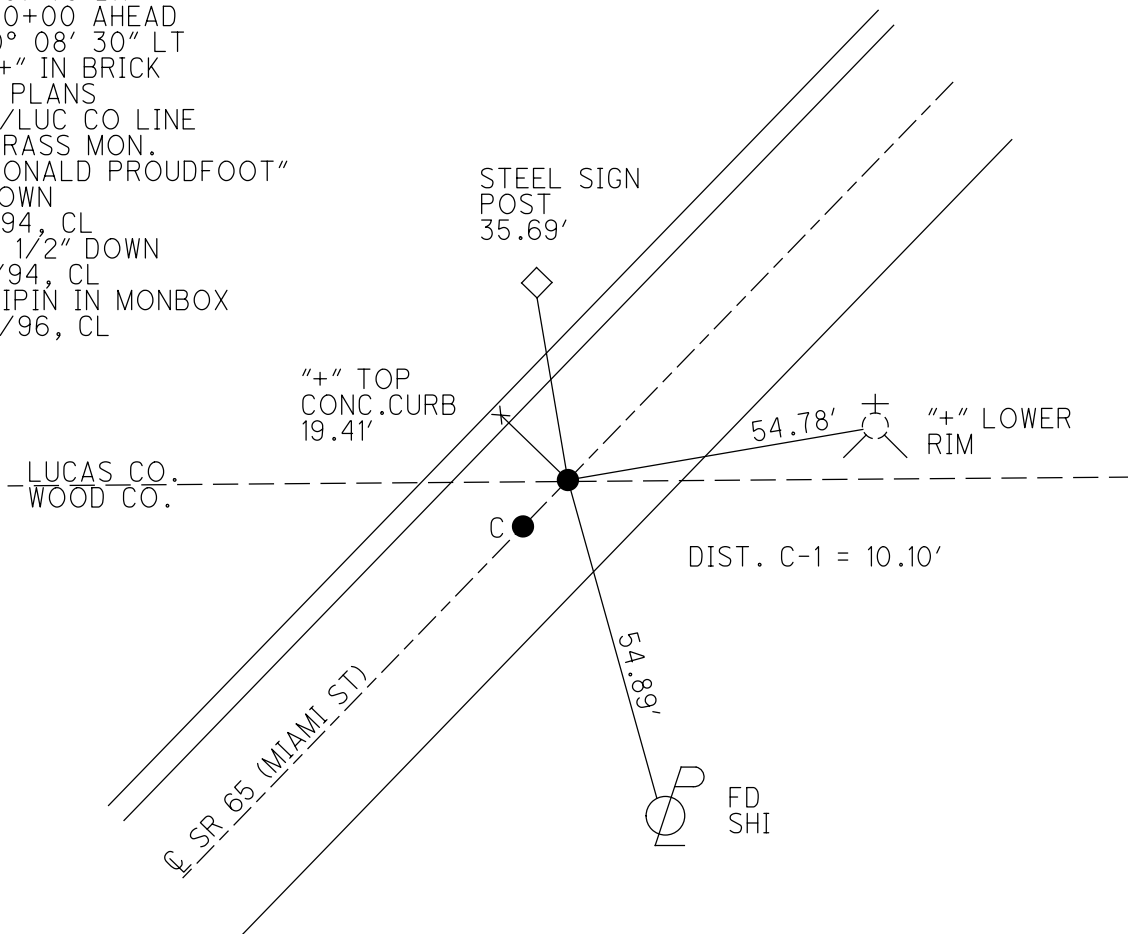
STATION: 0+00

HORZ. DATUM: _____ GEOID: _____

GRID: NORTHING: _____ EASTING: _____



RECORD: P.I.
 STA. 81+75 BK
 STA. 0+00 AHEAD
 $\Delta = 0^\circ 08' 30''$ LT
 FD "+" IN BRICK
 1966 PLANS
 WOO/LUC CO LINE
 FD BRASS MON.
 "McDONALD PROUDFOOT"
 3" DOWN
 4/1/94, CL
 FD 2 1/2" DOWN
 7/7/94, CL
 SET IPIN IN MONBOX
 8/15/96, CL



O.D.O.T. DISTRICT 2 SURVEY OFFICE

PERSONNEL

REFERENCE NO. 1

SHEET OF

NOTES LOEHRKE
 H.C. CANTERBURY
 R.C. HERMILLER
VOGEL
PRUNTY

DATE 7-7-54
 WEATHER Nice
 TEMP. +74

ROUTE SR 65
 COUNTY WOOD / LUCAS
 TOWNSHIP ROSSFORD
 SECTION RT 83
T 8 N R 11 E

A = BRASS PLATE - 3" DIA.

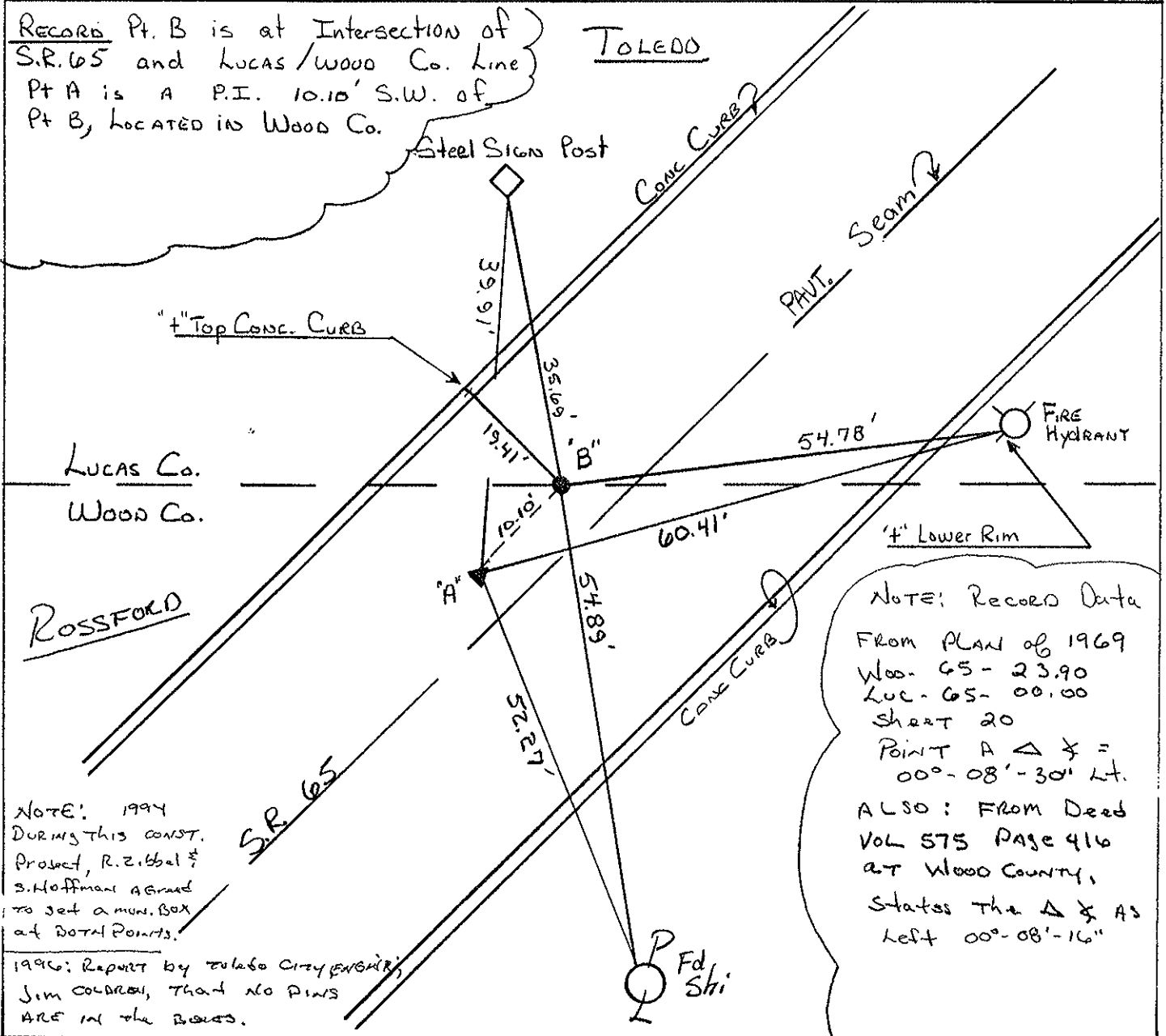
TYPE MONUMENT B = McDONALD PROUDFOOT Disk
ON SURFACE - BELOW A = 4" B = 2 1/2"
LEFT - & PAV'T. - RIGHT 5.0' Lt of "Seam"
19.0' Lt EDGE PAVEMENT
 S.L.M. B = 0+00 Lucas Co.

79	80	81	82	83
78				
77			SEC	
76			83	



RECORD Pt. B is at Intersection of
 S.R. 65 and Lucas/Wood Co. line
 Pt A is a P.I. 10.10' S.W. of
 Pt B, located in Wood Co.

TOLEDO



NOTE: Record Data
 From PLAN of 1969
 WOOD - 65 - 23.90
 LUCAS - 65 - 00.00
 SHEET 20
 POINT A Δ & =
 00°-08'-30' Lt.
 ALSO: FROM DEED
 VOL 575 PAGE 416
 AT WOOD COUNTY,
 STATES THE Δ & AS
 LEFT 00°-08'-16"

NOTE: 1994
 DURING THIS CONST.
 PROJECT, R. ZIBBEL &
 S. HOFFMAN AGREED
 TO SET A MON. BOX
 AT BOTH POINTS.

1996: Report by Toledo City Engineer,
 Jim COLEMAN, THAT NO PINS
 ARE IN THE BOXES.

8-15-96 C. LOEHRKE & CREW SET
 AN IRON PIN IN BOTH MONUMENTS.

O.D.O.T. DISTRICT 2 SURVEY OFFICE

PERSONNEL _____

REFERENCE NO. 1

SHEET 1 OF 5

NOTES Loehrke

H.C. CANTERBURY

R.C. Vogel

HERMILLER

DATE 4-1-94

WEATHER Nice

TEMP. +55

ROUTE S.R. 65

COUNTY WOOD / Lucas

TOWNSHIP _____

SECTION _____

T. _____ R. _____

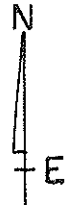
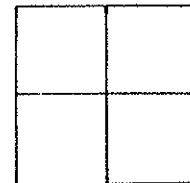
TYPE MONUMENT BRASS Monuments

~~ON~~ SURFACE - BELOW 3" Both

LEFT-☉ PAV'T. - RIGHT 5.8'

19.2 TO Lt EDGE PAVEMENT

S.L.M. Pt "A" = 1994 Project Sta 0+00



- Pt "A" Lg. BRASS Disk w/ Ctr. Pinch Hole.
Used as Sta 0+00 Lucas 65-0.00. RESURF PLANS - 1994
- Pt "B" Sm Steel Disk, Stamped "McDonald-Fraudfoot"
Believed to Be County Line

