

O.D.O.T. DISTRICT 2 SURVEY OFFICE (USE ONLY)

PERSONNEL _____

REFERENCE NO. 2

SHEET 2 OF 14

NOTES CITY _____ DATE 1/13/92

H.C. OF _____ WEATHER _____

R.C. TOLEDO _____ TEMP. _____

ROUTE _____ SR 65

COUNTY _____ LUCAS

TOWNSHIP 12 MILE RESERVE

SECTION _____ RT 84

DWG BY NIESE _____ PID _____

T 3 US R E

TYPE MONUMENT CMON W/ REBAR

ON SURFACE - ~~BELOW~~ ON _____

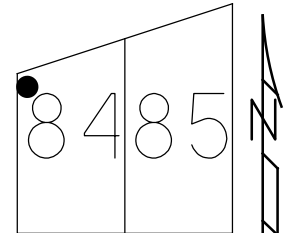
OFFSET \odot PAVEMENT _____ LT : RT

_____ TO _____ EDGE PAVEMENT

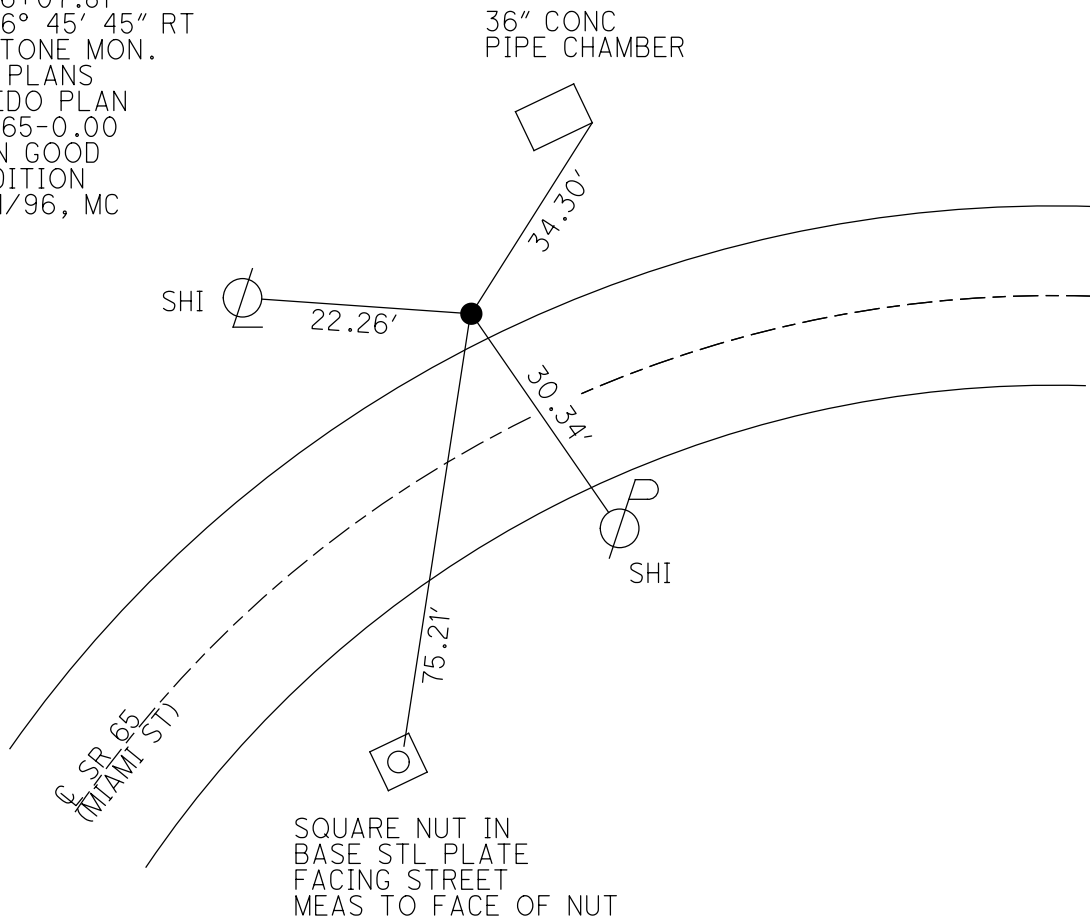
STATION: 6+07.81

HORZ. DATUM: _____ GEOID: _____

GRID: NORTHING: _____ EASTING: _____



RECORD: P.I.
 STA. 6+07.81
 $\Delta = 26^\circ 45' 45''$ RT
 FD STONE MON.
 1966 PLANS
 TOLEDO PLAN
 LUC-65-0.00
 FD IN GOOD
 CONDITION
 12/31/96, MC



O.D.O.T. DISTRICT 2 SURVEY OFFICE

PERSONNEL _____

REFERENCE NO. 2

SHEET 2 OF 5

NOTES CITY

H.C. OF

R.C. TOLEDO

DATE 1-13-92

WEATHER _____

TEMP. _____

ROUTE 65

COUNTY LUCAS

TOWNSHIP _____

SECTION _____

T _____ R _____

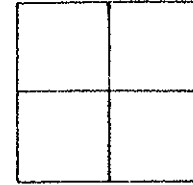
TYPE MONUMENT CONC MON W/REBAR

ON SURFACE - BELOW _____

LEFT- & PAV'T. - RIGHT _____

TO _____ EDGE PAVEMENT

S.L.M. 6+07.81



TOLEDO PLAN Luc-SR-65-00.00

DRAWN By Wm. LUCE

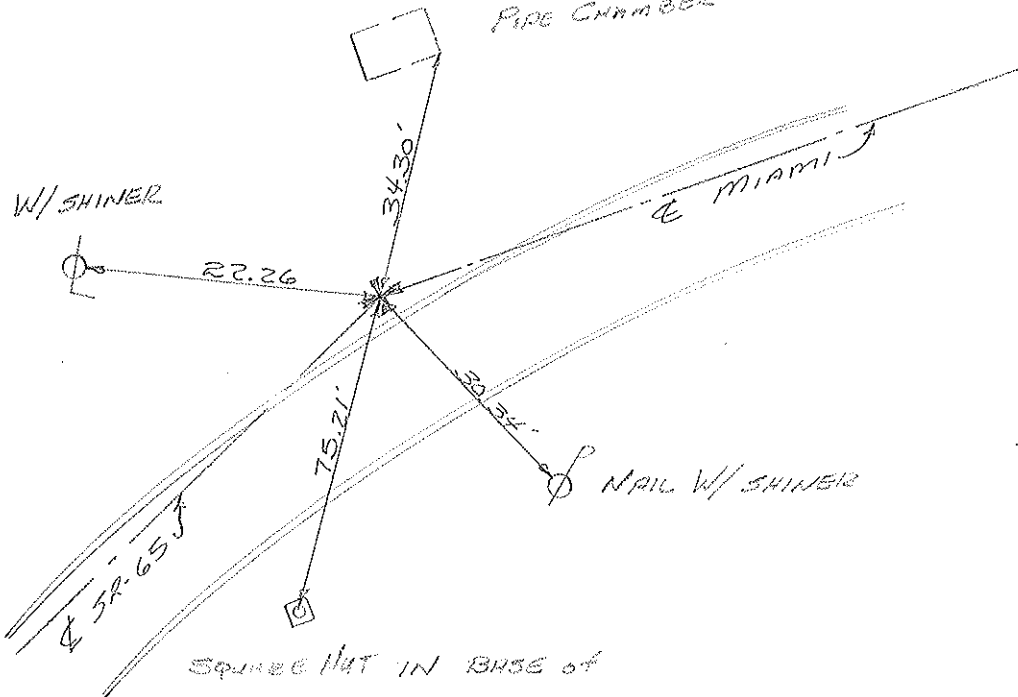
12-31-96

Found in Good Condition

VanDusen
Cantelero
Kousos

36" CONC.
PIPE CHAMBER

NAIL W/ SHINER



SQUARE NUT IN BASE of
STL PLATE FACING STREET
MEASURED TO FACE of NUT

PERSONNEL	TITLE	PERSONNEL	TITLE	COUNTY	DATE
VAN DUSEN				LUCAS	1-7-97
MOSER				S. R. 65	WEATHER CLOUDY
MARK C.				SEC. 0.00	TEMP. +22°F
TED R.					

DESCRIPTION RE-SET P.I. @ STA. 17+92.81 JOB NO. 621039

