

O.D.O.T. DISTRICT 2 SURVEY OFFICE (USE ONLY)

PERSONNEL \_\_\_\_\_ REFERENCE NO. 5 SHEET 6 OF 14

NOTES CITY \_\_\_\_\_ DATE 1/13/92 \_\_\_\_\_ ROUTE SR 65 \_\_\_\_\_

H.C. OF \_\_\_\_\_ WEATHER \_\_\_\_\_ COUNTY LUCAS \_\_\_\_\_

R.C. TOLEDO \_\_\_\_\_ TEMP. \_\_\_\_\_ TOWNSHIP 12 MILE RESERVE \_\_\_\_\_

DWG BY NIESE \_\_\_\_\_ PID \_\_\_\_\_ SECTION RT 85 \_\_\_\_\_

T 3 US R E

TYPE MONUMENT MONUMENT \_\_\_\_\_

ON SURFACE - ~~BELOW~~ ON \_\_\_\_\_

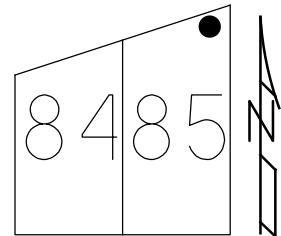
OFFSET  $\varnothing$  PAVEMENT \_\_\_\_\_ - \_\_\_\_\_ LT : RT

- TO - EDGE PAVEMENT

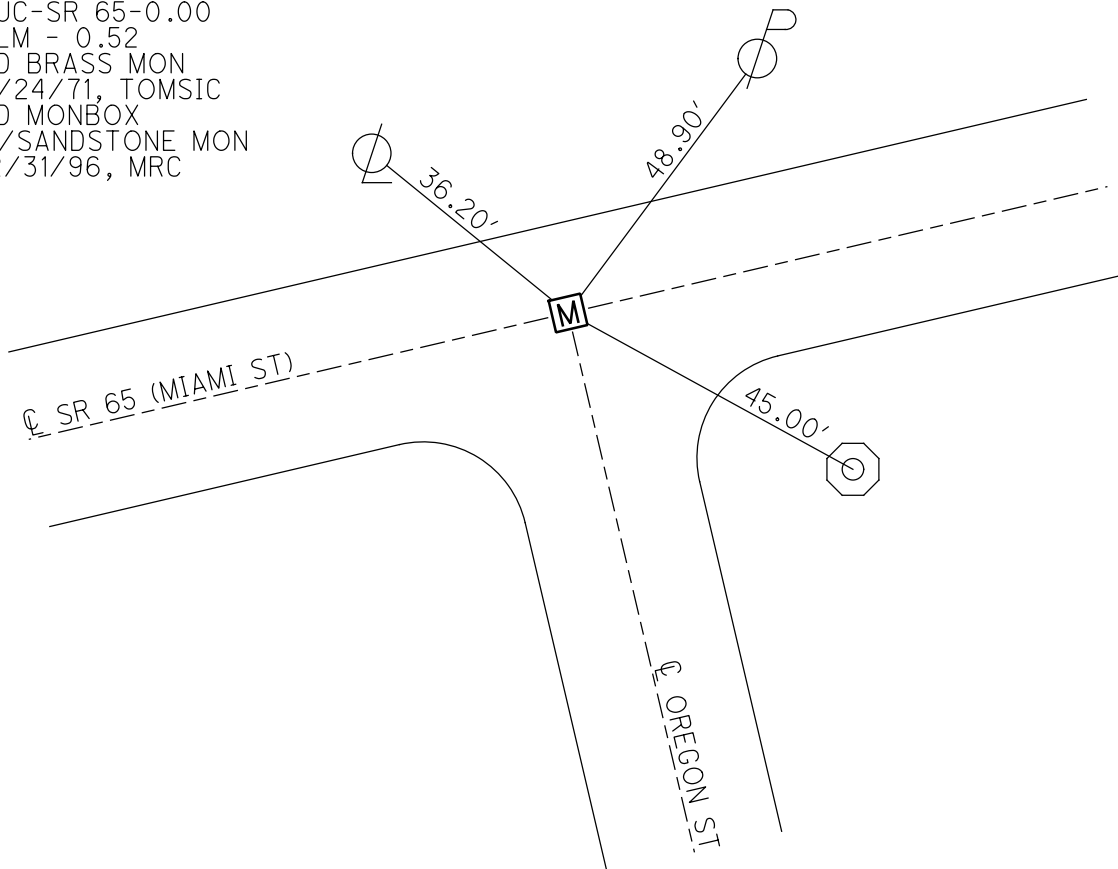
STATION: 28+54.73 \_\_\_\_\_

HORIZ.DATUM: \_\_\_\_\_ GEOID: \_\_\_\_\_

GRID: NORTHING: \_\_\_\_\_ EASTING: \_\_\_\_\_



RECORD: P.I.  
 STA. 28+54.73  
 $\Delta = 2^\circ 19' 15''$  LT  
 FD STONE MON.  
 1966 PLANS  
 TOLEDO PLAN  
 LUC-SR 65-0.00  
 SLM - 0.52  
 FD BRASS MON  
 8/24/71, TOMSIC  
 FD MONBOX  
 W/SANDSTONE MON  
 12/31/96, MRC



# O.D.O.T. DISTRICT 2 SURVEY OFFICE

PERSONNEL \_\_\_\_\_

REFERENCE NO. 5

SHEET 5 OF 5

NOTES CITY

H.C. OF

R.C. TOLEDO

DATE 1-13-92

WEATHER \_\_\_\_\_

TEMP. \_\_\_\_\_

ROUTE 65

COUNTY LUCAS

TOWNSHIP \_\_\_\_\_

SECTION \_\_\_\_\_

T. \_\_\_\_\_ R. \_\_\_\_\_

TYPE MONUMENT MODURMEN

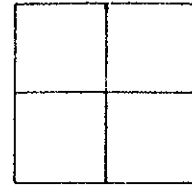
ON SURFACE - BELOW SURFACE

LEFT - & PAV'T. - RIGHT \_\_\_\_\_

\_\_\_\_\_ TO \_\_\_\_\_ EDGE PAVEMENT

S.L.M. 28+54.73

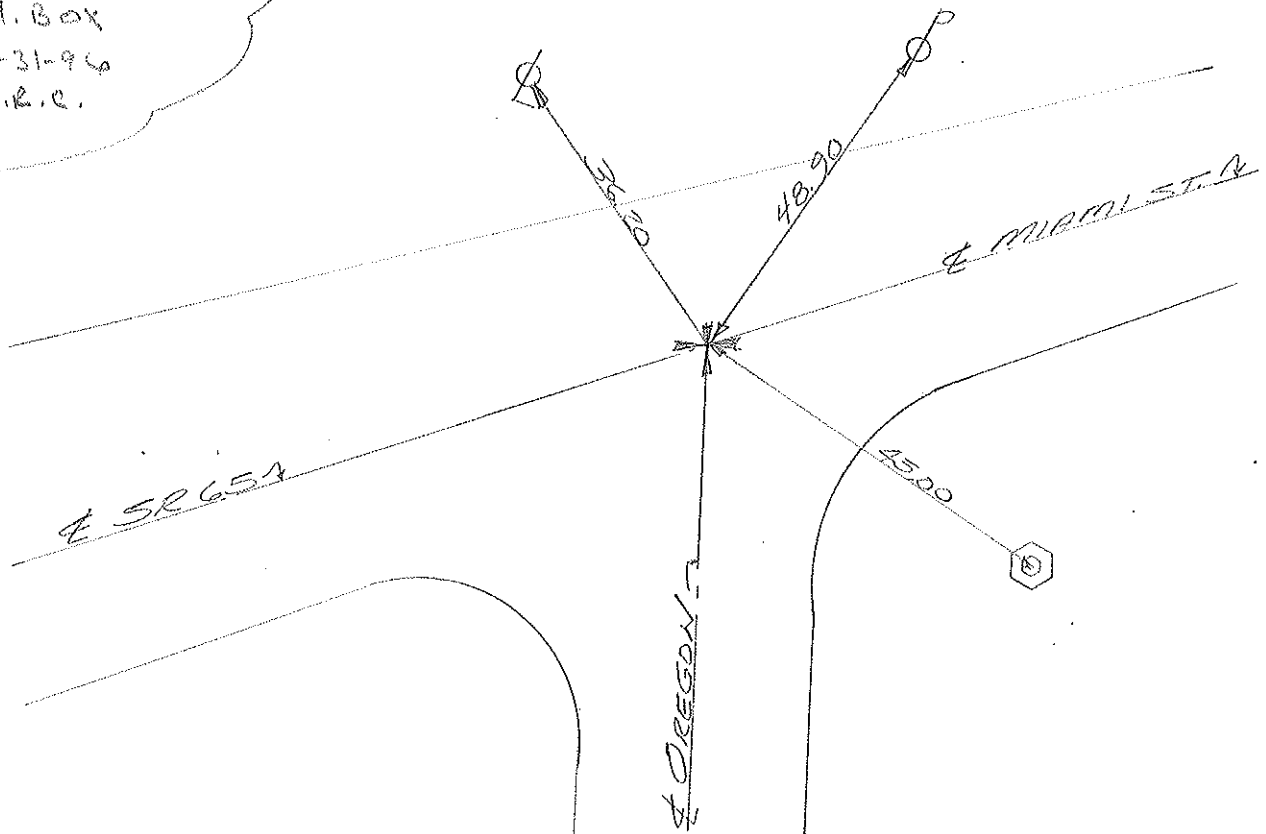
SLM  
0.52



TOLEDO PLAN LUC.-SR-65-000

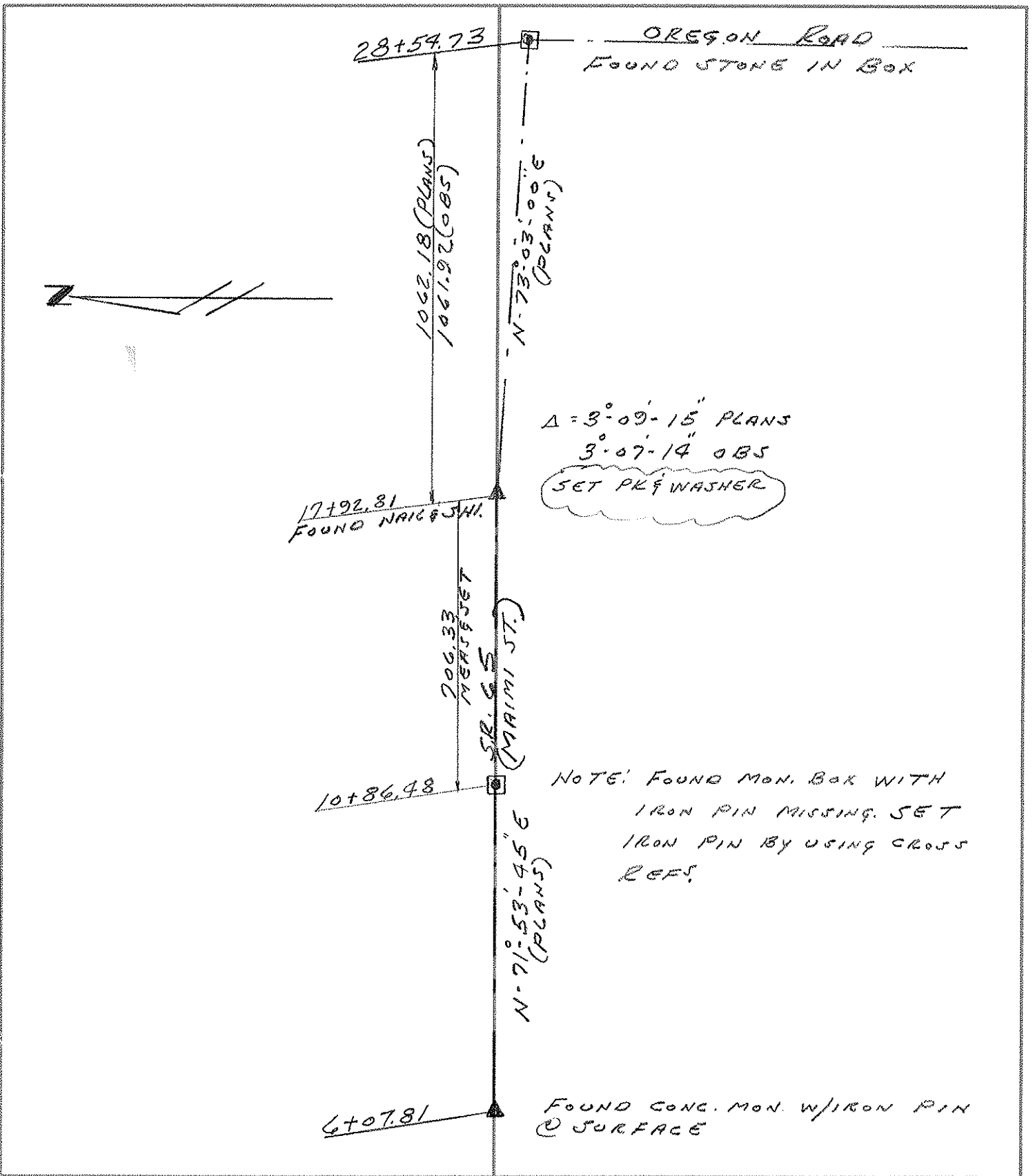
DRAWN Wm LUCE

Rd. SANDSTONE  
 MAXIMUM 14' IN  
 MOD. BOX  
 12-31-96  
 M.R.E.



PERSONNEL	TITLE	PERSONNEL	TITLE	COUNTY	DATE
<u>VAN DUSEN</u>				<u>LUCAS</u>	<u>1-7-97</u>
<u>MOSER</u>				S. R. <u>65</u>	WEATHER <u>CLOUDY</u>
<u>MARK C.</u>				SEC. <u>0.00</u>	TEMP. <u>+22° F</u>
<u>TED R.</u>					

DESCRIPTION RE-SET P.I. @ STA. 17+92.81 JOB NO. 621039



PERSONNEL	TITLE	PERSONNEL	TITLE
Towasic			
Vonyo			
Granata			
Jackson			

COUNTY LUCAS DATE AUG. 24, 1971

S. R. #65 WEATHER \_\_\_\_\_

SEC. \_\_\_\_\_ TEMP. \_\_\_\_\_

DESCRIPTION Reference Mon. on S. R. #65 JOB NO. \_\_\_\_\_

