

O.D.O.T. DISTRICT 2 SURVEY OFFICE (USE ONLY)

PERSONNEL _____

REFERENCE NO. 9

SHEET 10 OF 14

NOTES JUHASZ DATE 10/26/77

H.C. SZOLLOZI WEATHER _____

R.C. WILLIAMS TEMP. _____

ROUTE SR 65

COUNTY LUCAS

TOWNSHIP 12 MILE RESERVE

SECTION RT 87

DWG BY NIESE PID _____

T 3 US R E

TYPE MONUMENT BRASS PLATE

ON SURFACE - ~~BELOW~~ ON _____

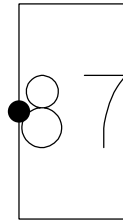
OFFSET ϕ PAVEMENT _____ LT : RT

_____ TO _____ EDGE PAVEMENT

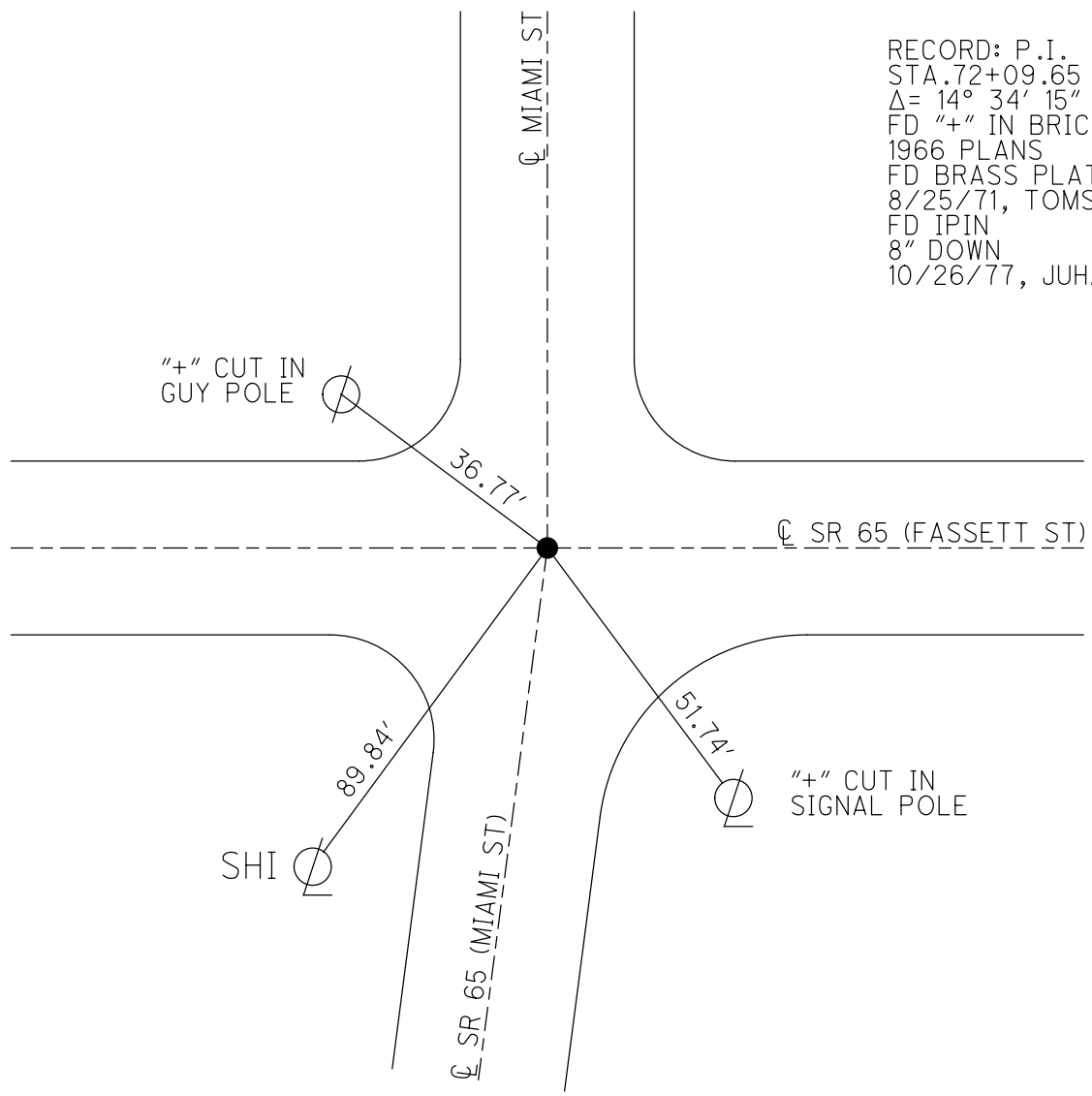
STATION: 72+09.65

HORZ.DATUM: _____ GEOID: _____

GRID: NORTHING: _____ EASTING: _____

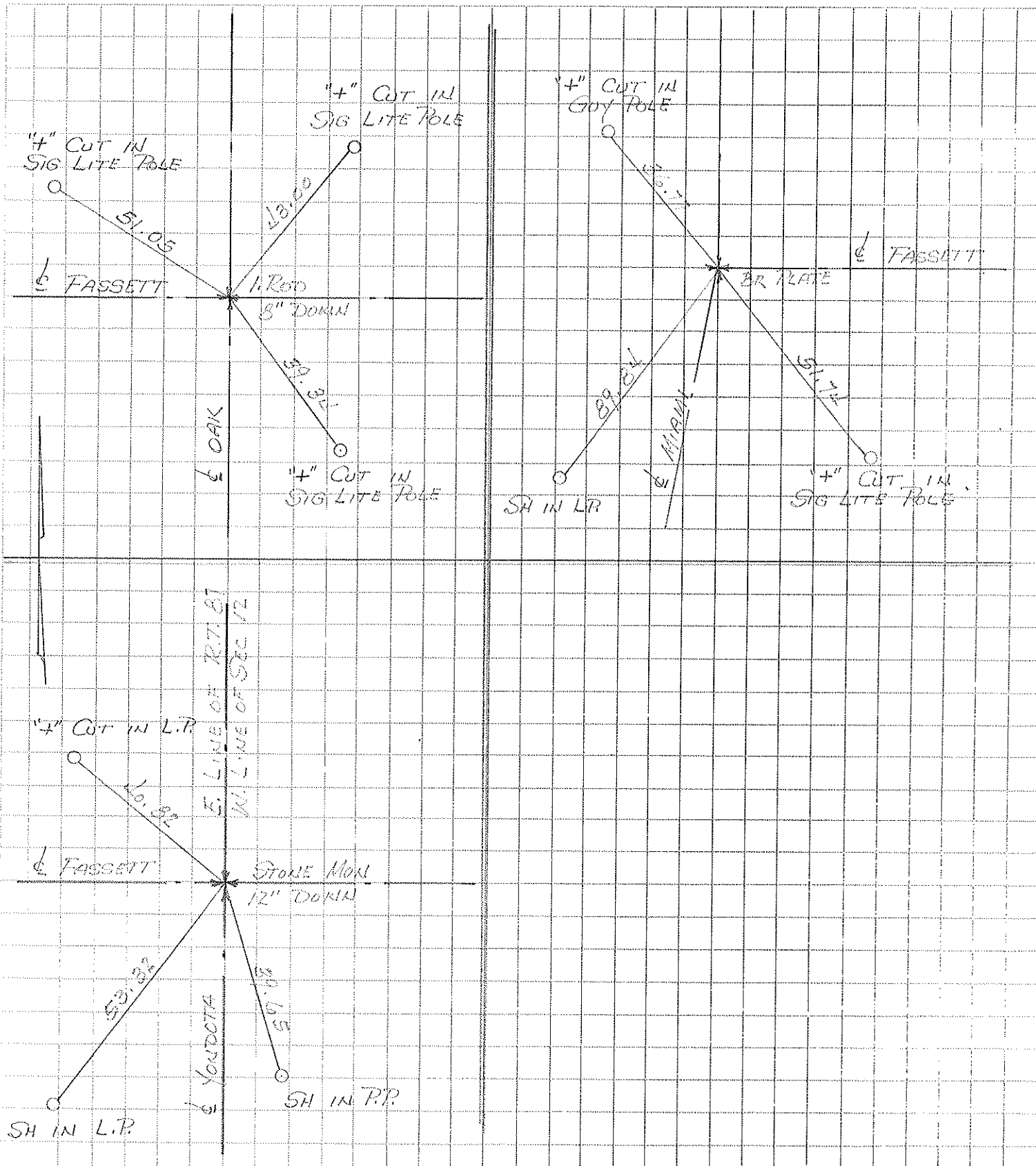


RECORD: P.I.
 STA. 72+09.65
 $\Delta = 14^\circ 34' 15''$ LT
 FD "+" IN BRICK
 1966 PLANS
 FD BRASS PLATE
 8/25/71, TOMSIC
 FD IPIN
 8" DOWN
 10/26/77, JUHASZ



PERSONNEL	TITLE	PERSONNEL	TITLE	PROJECT	DATE
LUHASZ					10/26/77
SCOLLOZI				PROJECT LIMITS	WEATHER
WILLIAMS				FROM STA. TO STA.	TEMP.

DESCRIPTION MON REF - FASSETT ST RESURF



PERSONNEL	TITLE	PERSONNEL	TITLE
Tomsic			
Vanyo			
Granata			
Jackson			

COUNTY LUCAS DATE Aug, 25, 1971
 S. R. #65 WEATHER Fair
 SEC. _____ TEMP. 80's

DESCRIPTION Reference Mon. on S.R. #65 JOB NO. _____

