

SUMMARY OF ADDITIONAL RIGHT OF WAY REQUIRED

LUCAS COUNTY
CITY OF TOLEDO
TOLEDO EXPRESSWAY SYSTEM
EXPRESSWAY-PART 20
LUC. 25-2.00
RIGHT OF WAY PLAN
LIMITED ACCESS HIGHWAY
LUC - I-75

PARCEL NO	OWNER	DEED RECORD		DEED AREA	TO BE ACQUIRED		RESIDUE		SHEET NO.	REMARKS
		BOOK	PAGE		LAND	BLDGS.	LEFT	RIGHT		
273-WL	Lee, Wayne and Mildred	1463	370	0.101	0.101	Yes			2	
274-WL	Roach, Allen L.	1770	122	0.101	0.101	Yes			"	
275-WL	Steward, Bedford and Omie	828	361	0.040	0.040	Yes			"	
298-WL	Bethal Chapel Church	1480	146	0.077	0.077	No			"	
299-WL	Russell, Jessie M.	1449	568	0.072	0.072	Yes			"	
300-WL	Williams, James and Rosie	1679	599	0.182	0.182	Yes			"	
301F-WD	Toledo Metropolitan Housing			0.026		No			"	
302-WL	Bethal Chapel Church	1108	410	0.164	0.164	Yes			"	
303-WL	Part Lawrence Title	1771	73	0.075	0.075	Yes			"	
304-WL	Simon, Rose	1608	403	0.119	0.119	Yes			"	
305-WL	Brown, Edward, et. al.	1732	572	0.119	0.119	Yes			"	
357G-Aerial	Nickel Plate Railroad			0.374		No			3,466	
359-WL	Herrman McLean Company	1608	301	0.311	0.311	Yes			4	
360-WL	Citizens Necessities Co.	609	482	0.566	0.013	Yes	0.553		"	
361-WL	Toledo Trust and Ohio Citizens	952	71	0.804	0.010	No	0.794		"	
362S	City of Toledo			0.002		No			"	
363S	Ohio Fuel Gas, Inc.			0.023		No			"	
365-WL	Besiste, Joseph	1630	110	0.046	0.046	No			"	
366-WL	Meyer, Lulu Anliker	1160	294	0.120	0.120	Yes			"	
367-WL	Throm Realty, Inc.	1410	367	0.325	0.187	No		0.138	"	
370-WL	Sanzenbacher William P. and Meyer, Lulu	1744	507	0.322	0.322	Yes			"	
374-WL	Schroeder, Charles	1287	76	0.768	0.140	Yes		0.628	"	
357-CA	Nickel Plate Railroad			0.012		No			3,466	
357-CB	Nickel Plate Railroad			0.012		No			"	
357-J-WL	No Owner of Record Found								2	
357-N-WL	No Owner of Record Found								"	
357-P-WL	No Owner of Record Found								"	
357-R-WL	No Owner of Record Found								"	
301-F-WA	Toledo Metropolitan Housing Authority								"	
272-WL	City of Toledo	958	178	0.101	0.016	No	0.085		"	
276-WL	City of Toledo			0.088	0.010	No	0.078		"	
301A-WL	City of Toledo			1.323	0.023	No		1.300	"	
323-WL	Motor Terminal Realty Co.	See Remarks		0.923	0.923	Yes			3	Vol. 1239, P. 438 and Vol. 1259, P. 571
334-WL	Kagan, Mollie, et. al.	1211	289	0.092	0.092	Yes			"	

* NOTE The Following Parcels Necessary For Grading and Drainage on LUC. 25-200 (Neb. Ave. Structure)

263 G-WL	Besiste, Joseph	555	239	0.762	0.762	No			2	
281-WL	Pauken, Carl J.	1631	78	0.408	0.408	No			"	
282-WL	Pauken, Carl J.	1631	78	0.032	0.032	No			"	
283-WL	Mohawk Motor, Inc.	1748	83	0.229	0.229	No			"	
284-WL	Weatherspoon, Marvin and Rosie Lee	1445	501	0.101	0.101	Yes			"	
290-WL	Cincinnati and Lake Erie R.R.	789	510	0.058	0.058	No			"	
291-WL	Huber, Chauncey E., Jr.	1783	385	0.490	0.490	Yes			"	
292-WL	Holtfreter, Helen Alber and Geo. H. Alber	1124	291	0.110	0.110	No			"	
293-WL	Tucker, Frances M., et. al.	1413	463	0.050	0.050	No			"	
294-WL	Tucker, Theodore, Jr.	See Remarks		0.077	0.077	Yes			"	Vol. 1413, P. 463 and Vol. 1492, P. 311
295-WL	Warnke, Frank L.	1498	69	0.094	0.094	No			"	
306-WL	McCoy, McKinley	1518	81	0.152	0.152	Yes			"	
307-WL	White, Clay and Evelyn	1450	181	0.086	0.086	Yes			"	
308-WL	Foster, Earnstein Franklin	See Remark		0.119	0.119	Yes			"	Vol. 1395, P. 226 and Vol. 1683, P. 425
309-WL	Schluak, Esther	1657	394	0.179	0.179	Yes			"	
311-WL	Gilmore, Sylvester	1668	435	0.060	0.060	Yes			"	
312-WL	Gibbs, Robert and Dorothy	1503	426	0.119	0.119	Yes			"	
313-WL	Warnke, Martha and Frank L.	1682	570	0.358	0.358	Yes			"	
322-WL	Liberty Highway Company	1047	508	0.916	0.916	Yes			3	
277-WL	Blaesing, Amelia Bertha	1716	412	0.101	0.101	Yes			2	
278-WL	Whelan Realty Company	1606	445	0.063	0.063	No			"	
279-WL	Geddis, Guy G., Jr.	1619	278	0.071	0.071	No			"	
280-WL	Johnson, Janie	See Remarks		0.067	0.067	Yes			"	
285-WL	Connell, Margaret M., et. al.	1569	423	0.101	0.101	No			"	
286-WL	Church of God in Christ	1477	91	0.134	0.134	No			"	
287-WL	Dusha, Edmond J. and Van Dame, Irene E.	See Remarks		0.270	0.270	Yes			"	Vol. 1503, P. 368 and Vol. 1529, P. 278

PARCEL NO	OWNER	DEED RECORD		DEED AREA	TO BE ACQUIRED		RESIDUE		SHEET NO.	REMARKS
		BOOK	PAGE		LAND	BLDGS.	LEFT	RIGHT		
296-WL	Eppstein, Richard C., et. al.	See Remarks		0.119	0.119	Yes			2	Vol. 1628, P. 231, Vol. 1681, P. 646 and Vol. 1732, P. 572
297-WL	Twiss, Helen L.	1626	554	0.110	0.110	Yes			"	
316-WL	Mohawk Motor, Inc.	1680	573	0.328	0.225	No		0.103	"	
317-WL	Durell, Donald B. and Spengler Otto H.	1682	570	0.229	0.229	Yes			364	
318-WL	Brandman, Peter	See Remarks		0.850	0.850	No			"	Vol. 1207, P. 401, Vol. 1286, P. 421 and Vol. 1286, P. 424
357-WL	Nickel Plate Railroad			0.302		No			3,466	
353-WL	General Baking Company	See Remarks		0.689	0.460	Yes		0.229	364	Vol. 371, P. 38, Vol. 474, P. 604 and Vol. 966, P. 258
349-WL	Brandman, Peter	See Remarks		0.689	0.689	Yes			"	Vol. 1286, P. 421 and P. 424

LUC. 24-24.88

Scanned July 1967

R-3075 #7 C-106

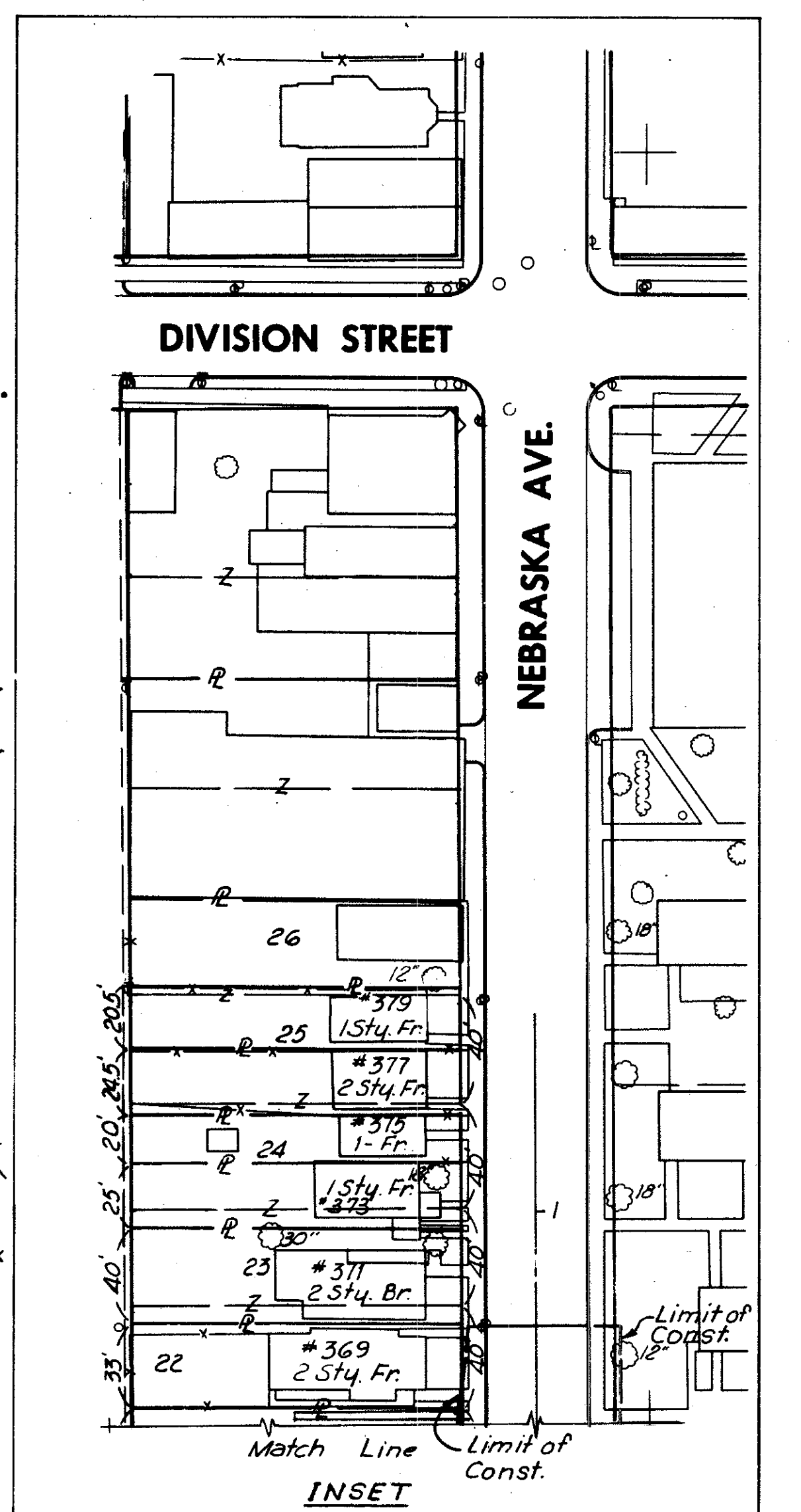
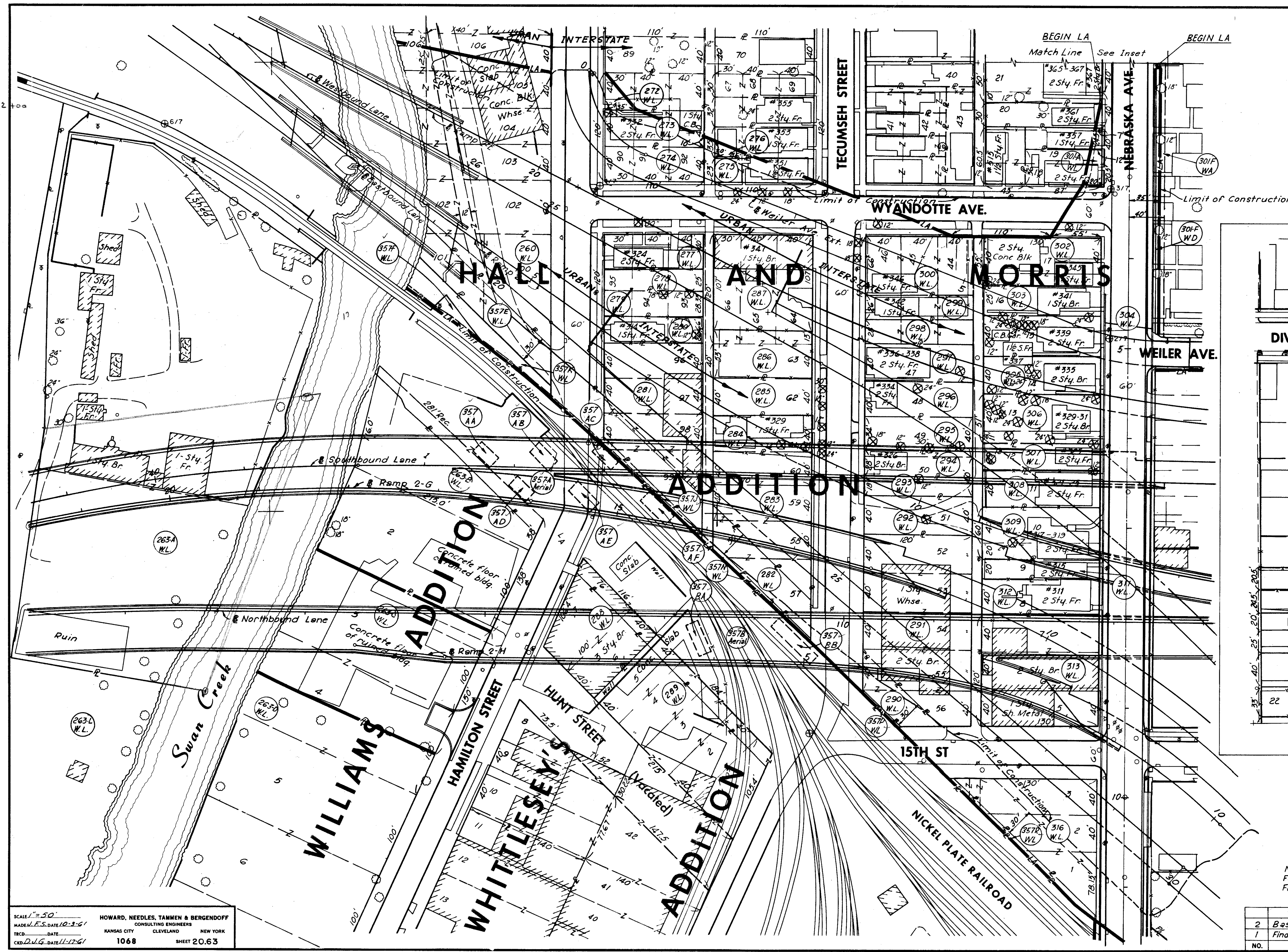
SCALE NONE
MADE J.C.S. DATE 10-16-62
TRCD DATE
CND J.P.B. DATE 10-16-62
HOWARD, NEEDLES, TAMMEN & BERGENDOFF
CONSULTING ENGINEERS
KANSAS CITY CLEVELAND NEW YORK
1068 SHEET 20,62

NO.	REVISION	DATE	BY

Scanned July 1997

FED. RD. DIVISION	STATE	PROJECT	63 114
2	OHIO		

LUCAS COUNTY
CITY OF TOLEDO
TOLEDO EXPRESSWAY SYSTEM
EXPRESSWAY-PART 20
LUC. 25-2.00
RIGHT OF WAY PLAN
LIMITED ACCESS HIGHWAY



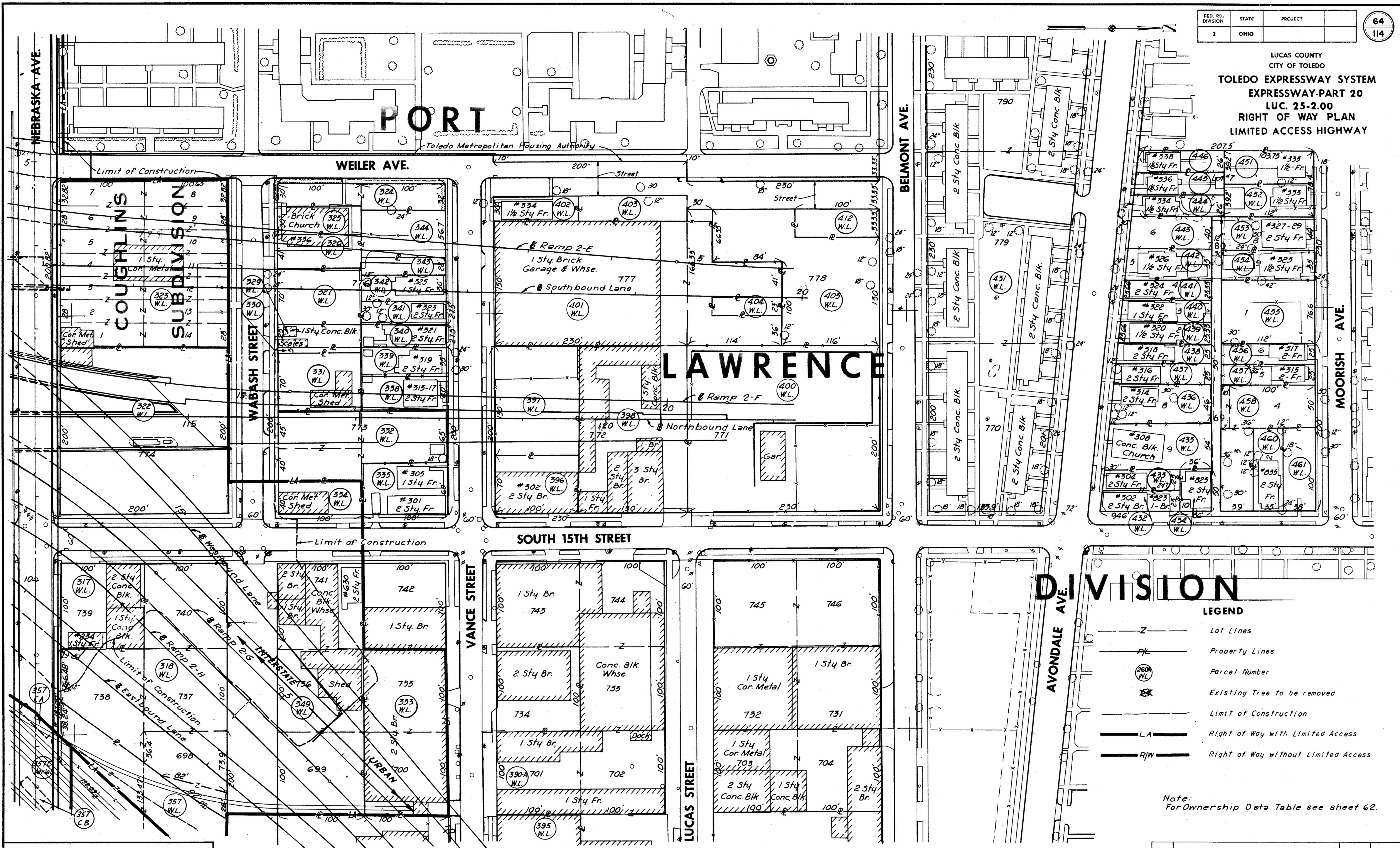
Note:
For Ownership Data Table see sheet 62.
For Legend see sheet 64.

SCALE 1"=50'
MADE & F.S. DATE 12-3-61
TRCD DATE
CRD D.V.G. DATE 11-12-61
HOWARD, NEEDLES, TAMMEN & BERGENDOFF
CONSULTING ENGINEERS
KANSAS CITY CLEVELAND NEW YORK
1068 SHEET 20.63

2	Base Lines and Construction Limits	9-18-62	J.R.B.
1	Final Taking Lines and Ownership Data	8-15-62	J.R.B.
NO.	REVISION	DATE	BY

Scanned July 14, 2017

LUCAS COUNTY
CITY OF TOLEDO
TOLEDO EXPRESSWAY SYSTEM
EXPRESSWAY-PART 20
LUC. 25-2.00
RIGHT OF WAY PLAN
LIMITED ACCESS HIGHWAY



D. DIVISION

LEGEND

- Lot Lines
- Property Lines
- Parcel Number
- Existing Tree to be removed
- Limit of Construction
- Right of Way with Limited Access
- Right of Way without Limited Access

Note:
For Ownership Data Table see sheet 62.

SCALE 1"=50'
MADE L.F.S. DATE 10-3-61
TRCD. DATE
CER. D.L.G. DATE 11-17-61

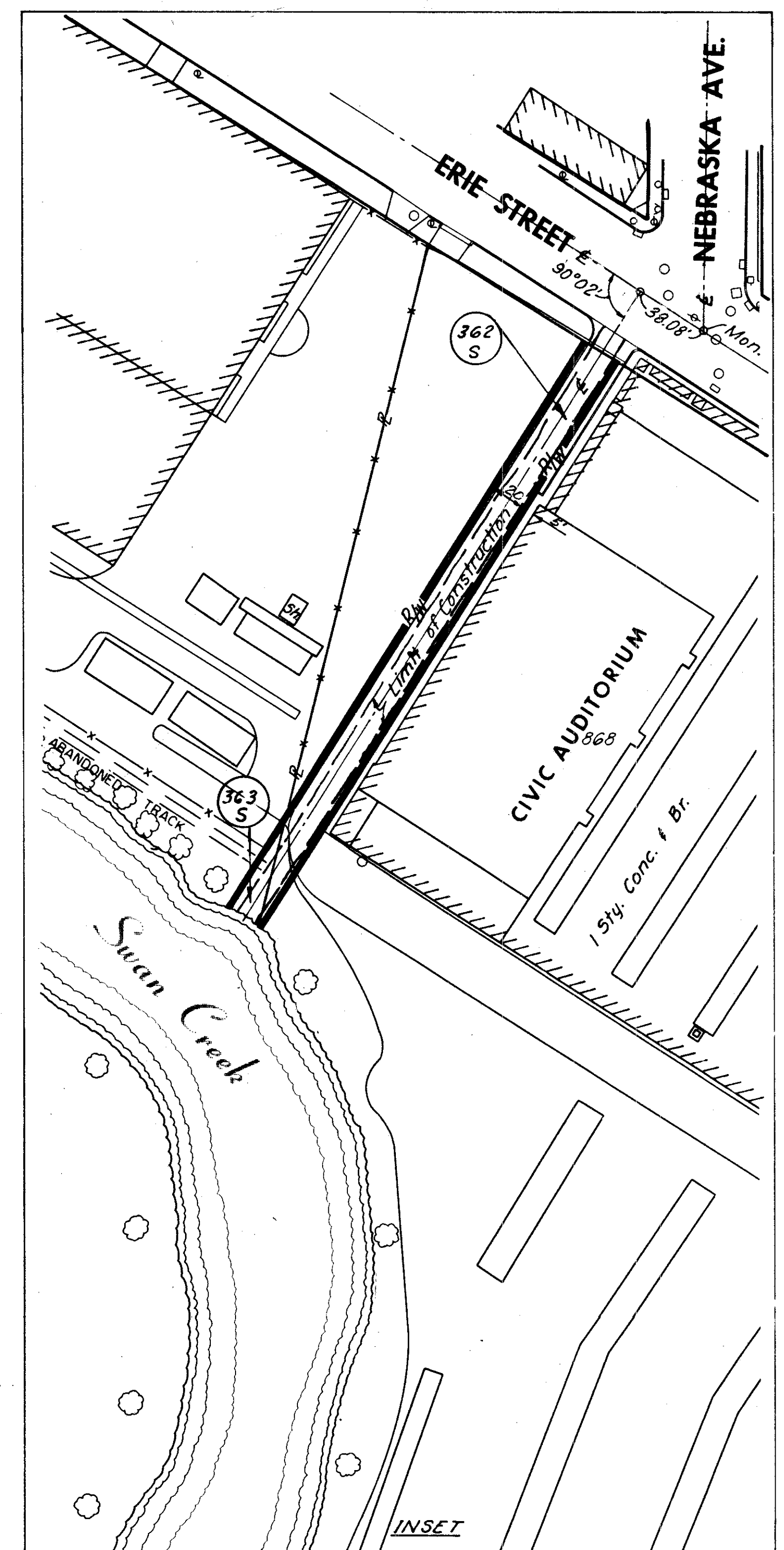
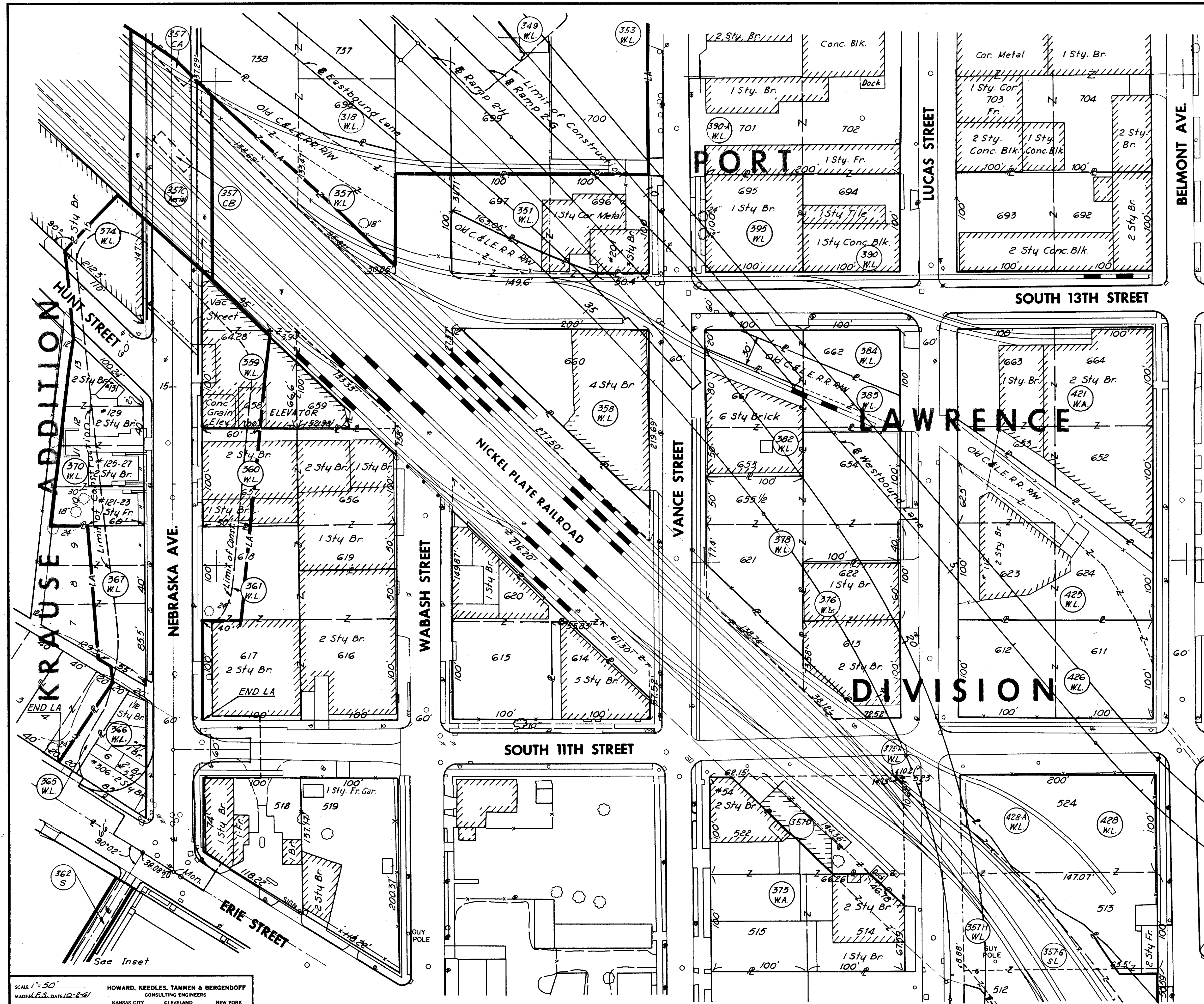
HOWARD, NEEDLES, TAMMEN & BERGENDOFF
CONSULTING ENGINEERS
KANSAS CITY CLEVELAND NEW YORK
1068 SHEET 20.64

1	Final Taking Lines and Ownership Data	9-18-62	J.R.B.
NO.	REVISION	DATE	BY

Scanned July 1977

FED. RD. DIVISION	STATE	PROJECT	65 114
2	OHIO		

LUCAS COUNTY
CITY OF TOLEDO
TOLEDO EXPRESSWAY SYSTEM
EXPRESSWAY-PART 20
LUC. 25-2.00
RIGHT OF WAY PLAN
LIMITED ACCESS HIGHWAY



Note: For Ownership Data Table see sheet G2.
For Legend see sheet G4.

SCALE 1"=50'
MADE P.E.S. DATE 10-2-61
TRCD. DATE
CRD. DATE 11-16-61

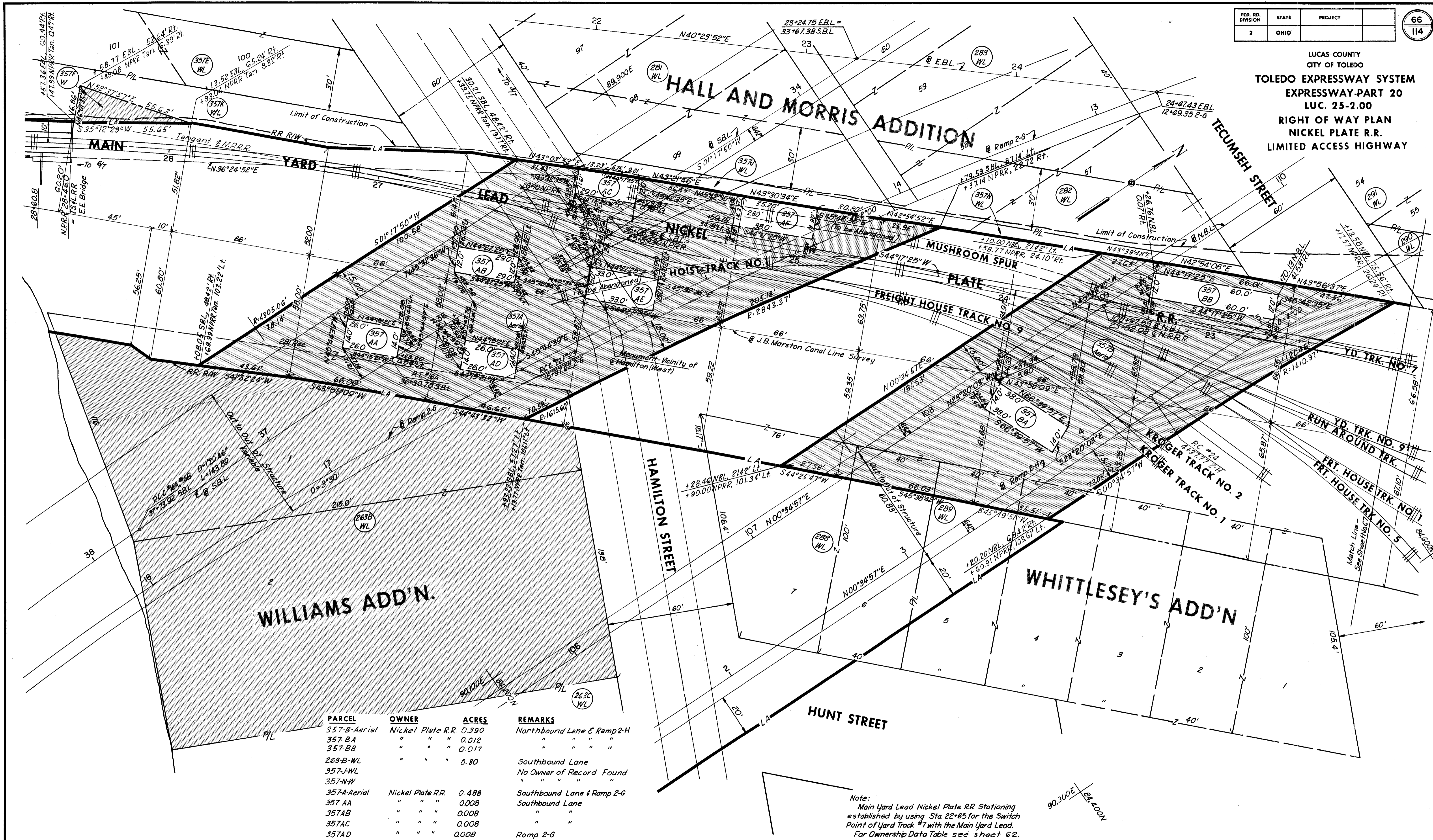
HOWARD, NEEDLES, TAMMEN & BERGENOFF
CONSULTING ENGINEERS
KANSAS CITY CLEVELAND NEW YORK
1068 SHEET 20.65

NO.	REVISION	DATE	BY
1	Final Taking Lines and Ownership Data	9-18-62	J.P.B.

Scanned July 1977

FED. RD. DIVISION	STATE	PROJECT	66
2	OHIO		114

LUCAS COUNTY
CITY OF TOLEDO
TOLEDO EXPRESSWAY SYSTEM
EXPRESSWAY-PART 20
LUC. 25-2.00
RIGHT OF WAY PLAN
NICKEL PLATE R.R.
LIMITED ACCESS HIGHWAY



PARCEL	OWNER	ACRES	REMARKS
357-B-Aerial	Nickel Plate R.R.	0.390	Northbound Lane & Ramp 2-H
357-BA	"	0.012	"
357-BB	"	0.017	"
263-B-WL	"	0.80	Southbound Lane
357-J-WL	"		No Owner of Record Found
357-N-W	"		"
357A-Aerial	Nickel Plate R.R.	0.488	Southbound Lane & Ramp 2-G
357 AA	"	0.008	Southbound Lane
357AB	"	0.008	"
357AC	"	0.008	"
357AD	"	0.008	Ramp 2-G
357AE	"	0.011	"
357AF	"	0.013	"
357F	"	0.010	Eastbound Lane

Note: Aerial Easement Acreage includes Footer Easements.

Note:
Main Yard Lead Nickel Plate RR Stationing established by using Sta 22+65 for the Switch Point of Yard Track #7 with the Main Yard Lead. For Ownership Data Table see sheet 62. For Legend see sheet 64.

SCALE: 1"=20'
MADE: CLWJ, DATE: 8-28-62
TRCD: NMB, DATE: 8-23-62
CD: N.A.K., DATE: 9-29-62
HOWARD, NEEDLES, TAMMEN & BERGENDOFF
CONSULTING ENGINEERS
KANSAS CITY CLEVELAND NEW YORK
1068 SHEET 20.66

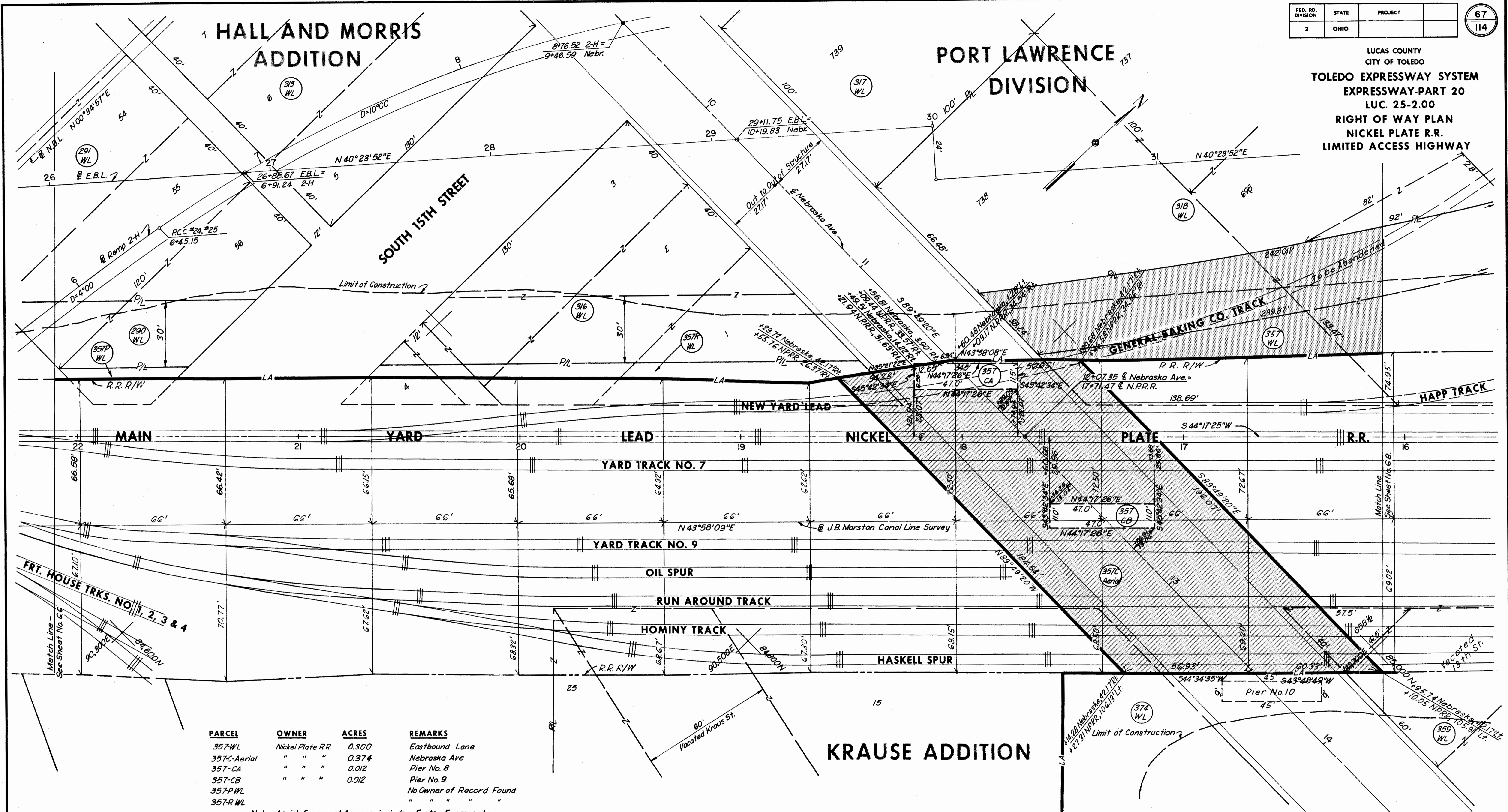
2	Stations and Offset Dist. 357F, A, B	10-15-62	CLWJr.
1	Limit of Construction	9-22-62	JPB
NO.	REVISION	DATE	BY

5/20/67
July, 1967

FOR ANY QUESTIONS PLEASE CONTACT ODOT DISTRICT 2 REAL ESTATE AT 419-353-8131

FED. RD. DIVISION	STATE	PROJECT	67 114
2	OHIO		

LUCAS COUNTY
CITY OF TOLEDO
TOLEDO EXPRESSWAY SYSTEM
EXPRESSWAY-PART 20
LUC. 25-2.00
RIGHT OF WAY PLAN
NICKEL PLATE R.R.
LIMITED ACCESS HIGHWAY



PARCEL	OWNER	ACRES	REMARKS
357-WL	Nickel Plate R.R.	0.300	Eastbound Lane
357C-Aerial	"	0.374	Nebraska Ave.
357-CA	"	0.012	Pier No. 8
357-CB	"	0.012	Pier No. 9
357-PWL			No Owner of Record Found
357-R WL			" " " "

Note: Aerial Easement Acreage includes Footer Easements.

KRAUSE ADDITION

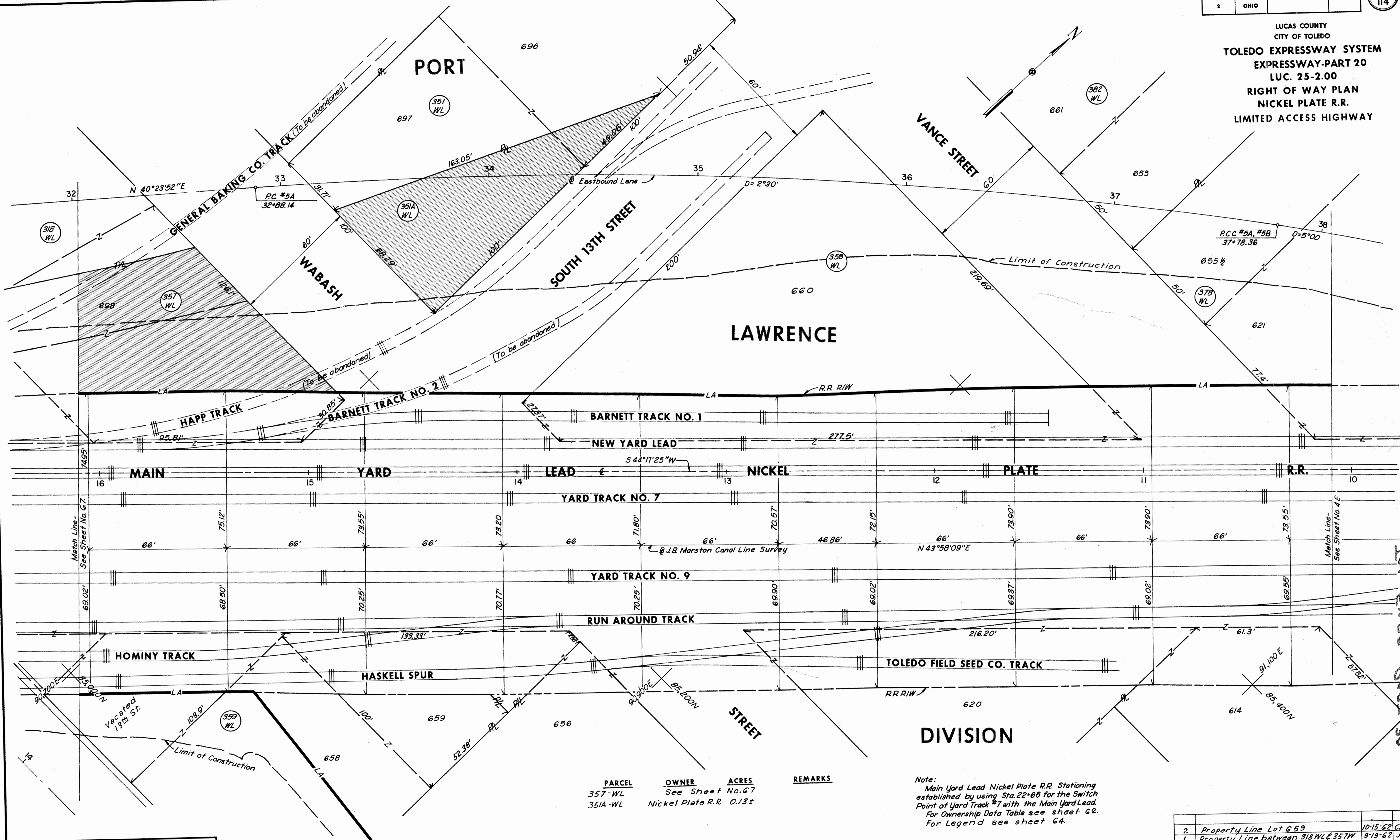
Note:
Main Yard Lead Nickel Plate RR. Stationing established by using Sta. 22+0.5 for the Switch Point of Yard Track #7 with the Main Yard Lead. For Ownership Data Table see sheet 62. For Legend see sheet 64.

SCALE 1" = 20'
MADE CLWJr. DATE 8-29-62
TRCD WMB DATE 8-30-62
CD N.A.K. DATE 9-28-62
HOWARD, NEEDLES, TAMMEN & BERGENDOFF
CONSULTING ENGINEERS
KANSAS CITY CLEVELAND NEW YORK
1068 SHEET 20.67

2	Stations and Offset Distances 357C	10-15-62	CLWJr.
1	Property Line between 318WL & 357WL	9-19-62	J.P.B.
NO.	REVISION	DATE	BY

FED. RD. DIVISION	STATE	PROJECT
2	OHIO	

LUCAS COUNTY
CITY OF TOLEDO
TOLEDO EXPRESSWAY SYSTEM
EXPRESSWAY-PART 20
LUC. 25-2.00
RIGHT OF WAY PLAN
NICKEL PLATE R.R.
LIMITED ACCESS HIGHWAY



PARCEL	OWNER	ACRES	REMARKS
357-WL	See Sheet No. 67		
351A-WL	Nickel Plate R.R.	0.13±	

Note:
Main Yard Lead Nickel Plate R.R. Stationing established by using Sta. 22+65 for the Switch Point of Yard Track #7 with the Main Yard Lead. For Ownership Data Table see sheet G2. For Legend see sheet G4.

NO.	REVISION	DATE	BY
2	Property Line Lot 659	10-15-62	CLW Jr.
1	Property Line between 318 WL & 357 WL	9-19-62	J.P.B.

SCALE 1" = 20'
HOWARD, NEEDLES, TAMMEN & BERGENDOFF
CONSULTING ENGINEERS
KANSAS CITY CLEVELAND NEW YORK
1068 SHEET 20.68

10-15-62
 9-19-62
 CLW Jr.
 J.P.B.
 10-15-62
 9-19-62
 CLW Jr.
 J.P.B.