

FED. RD. DIVISION	STATE	FED. AID PROJ. NO.	
2	OHIO	I-75-6(4)	

166
296

1
17

LUCAS COUNTY
CITY OF TOLEDO
TOLEDO EXPRESSWAY SYSTEM
EXPRESSWAY - PART 30
LUC 75-5.46
RIGHT OF WAY
LIMITED ACCESS HIGHWAY

STATE OF OHIO
DEPARTMENT OF HIGHWAYS
LUC 75-5.46
LUCAS COUNTY
CITY OF TOLEDO
TOLEDO EXPRESSWAY SYSTEM - PART 30
MANHATTAN EXPRESSWAY
DREXEL DRIVE TO DETROIT AVENUE
GRADE SEPARATION WITH THE PENN CENTRAL AND MICHIGAN CENTRAL RAILROADS

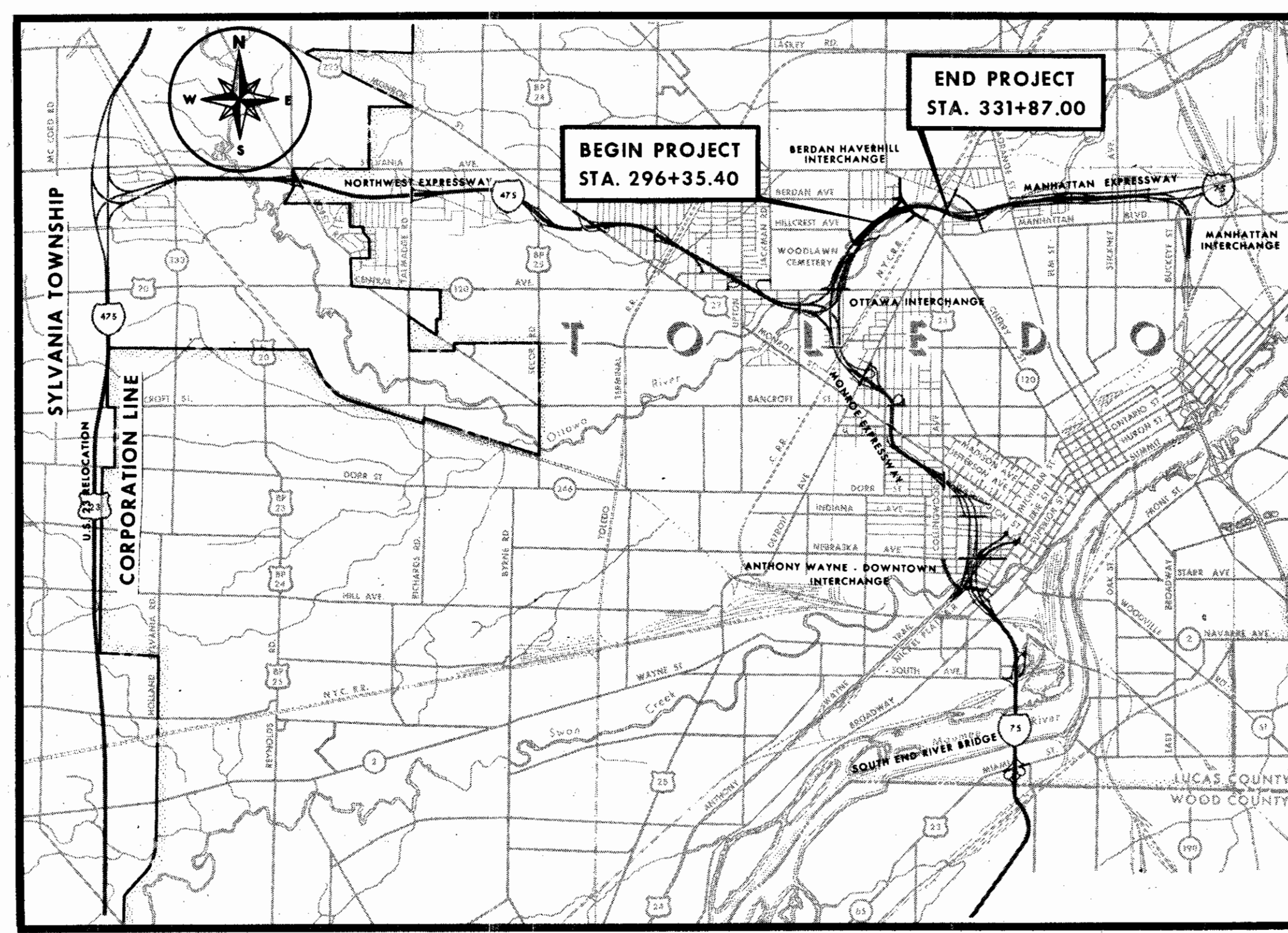
I-75-6(4)
LIMITED ACCESS
RIGHT OF WAY ONLY

THIS IMPROVEMENT IS ESPECIALLY DESIGNED FOR THROUGH TRAFFIC AND HAS BEEN DECLARED A LIMITED ACCESS HIGHWAY OR FREEWAY BY ACTION OF THE DIRECTOR OF HIGHWAYS IN ACCORDANCE WITH THE PROVISIONS OF SECTION 5511.02 OF THE REVISED CODE OF OHIO.

APPROVED _____
DATE _____ DEPUTY DIRECTORY OF RIGHT OF WAY
APPROVED _____
DATE _____ DIRECTOR OF HIGHWAYS

LEGEND

— Z —	LOT LINES
— P/L —	PROPERTY LINES
○ 260A WL	PARCEL NUMBER
---	WORK LIMIT
---	LIMIT OF CONSTRUCTION
— LA —	RIGHT OF WAY WITH LIMITED ACCESS
— R/W —	RIGHT OF WAY WITHOUT LIMITED ACCESS
---	TEMPORARY RIGHT OF WAY
---	WORK AGREEMENT



LOCATION MAP



PORTION TO BE IMPROVED _____

PREPARED AND RECOMMENDED BY
HOWARD, NEEDLES, TAMMEN & BERGENDOFF
CONSULTING ENGINEERS
KANSAS CITY CLEVELAND NEW YORK

FILE NO.	LUCAS COUNTY
	SEC. LUC 75-5.46 PART 30
	DATE OF LETTING _____ 19__
	CONTRACT NO. _____

Revised July 1977

R-30758 * 2 C-112

FED. RD. DIVISION	STATE	PROJECT
2	OHIO	1-75-6(4)

167
296

2
17

SUMMARY OF ADDITIONAL RIGHT OF WAY REQUIRED

TOTAL NO. OF OWNERS 53
TOTAL NO. OF STRUCTURES 32

SHEET 1 OF 3

LUCAS COUNTY
CITY OF TOLEDO
TOLEDO EXPRESSWAY SYSTEM
EXPRESSWAY - PART 30
LUC 75-5.46

PARCEL NO.	OWNER	TYPE FUND	RECORDED		DEED AREA	TOTAL P.R.O.	TOTAL TAKE	P.R.O. IN TAKE	NET TAKE		NET RESIDUE		SHEET NO.	REMARKS
			BOOK	PAGE					LAND	BLDG.	LEFT	RIGHT		
1196D WL	City of Toledo, Willys Park	I	See Remarks		111.07 Ac.	2.31 Ac.	41.93 Ac.	1.70 Ac.	40.23	* Yes	39.44 Ac.	20.79 Ac.	6 Thru 12	183,270, 201,185, 201,186, 187, 236, 210, 206, 355, 368, 136, 981, 348
1196D WL-1	City of Toledo, Willys Park	I					* 0.09 Ac.			No			12	* 1 Story Stone and Brick Shelterhouse #3801 Sq.Ft.
1196D WL-2	City of Toledo, Willys Park	I					* 0.86 Ac.			No			12	* 37,577 Sq.Ft.
1196D WD	City of Toledo, Willys Park	I					* 0.99 Ac.	.06 Ac.	*.93 Ac.	No			6 & 7	* 42,701 Sq.Ft.
1196D WD-1	City of Toledo, Willys Park	I					* 4.17 Ac.			No			7 Thru 9	* 181,599 Sq. Ft.
1196D WD-2	City of Toledo, Willys Park	City					1.54 Ac.	0.52 Ac.	1.02 Ac.	No			9	* 66,939 Sq. Ft.
1196D WD-3	City of Toledo, Willys Park	I					* 0.75 Ac.			No			9 & 10	* 32,848 Sq. Ft.
1196D WD-4	City of Toledo, Willys Park	City					* 0.44 Ac.			No			9 & 10	* 19,059 Sq.Ft.
1196D S-1	City of Toledo, Willys Park	I					* 2.08 Ac.			No			7 & 8	* 90,499 ft ²
1196D S-2	City of Toledo, Willys Park	I					* 0.54 Ac.			No			7 Thru 9	* 23,497 Sq.Ft.
1196D S-3	City of Toledo, Willys Park	I					* 0.71 Ac.			No			9 & 10	* 30,987 Sq.Ft.
1196D S-4	City of Toledo, Willys Park	I					* 0.54 Ac.			No			10	* 23,542 Sq.Ft.
1196D S-5	City of Toledo, Willys Park	I					* 0.08 Ac.			No			11	* 3565 Sq.Ft.
1196D S-6	City of Toledo, Willys Park	I					* 0.27 Ac.			No			10	* 11,914 Sq.Ft.
1196D S-7	City of Toledo, Willys Park	I					* 0.42 Ac.			No			11	* 18,402 Sq.Ft.
1196D X	City of Toledo, Willys Park	I					* 0.22 Ac.			No			7	* 9514 Sq.Ft.
1196D X-1	City of Toledo, Willys Park	I					* 0.32 Ac.	.03 Ac.	.29 Ac.	No			9	* 13,816 Sq.Ft.
1196D X-2	City of Toledo, Willys Park	I					* 5.23 Ac.			No			9,10,11,12	* 227,650 Sq. Ft.
1196D X-3	City of Toledo, Willys Park	I					* 0.63 Ac.			No			12	* 27278 Sq.Ft.
1196D T-1	City of Toledo, Willys Park	I					* 1.68 Ac.			No			7 & 8	Grading and Park Road Construction * 73,359 Sq. Ft.
1196D T-2	City of Toledo, Willys Park	I					* 1.74 Ac.			No			8	Grading and Park Road Construction * 75,638 Sq. Ft.
1196D T-3	City of Toledo, Willys Park	City					* 1.18 Ac.			No			9	Grading and Park Road Construction * 51,454 Sq. Ft.
1196D T-4	City of Toledo, Willys Park	City					* 0.65 Ac.			No			9	Grading * 28,311 Sq. Ft.
1196D T-5	City of Toledo, Willys Park	I					* 0.54 Ac.			No			9 & 10	Grading * 23,718 Sq.Ft.
1196D T-6	City of Toledo, Willys Park	City					* 0.99 Ac.			No			10 Thru 12	Grading * 4,025 Sq.Ft.
1196D WA	City of Toledo, Willys Park	I					* 8.89 Ac.			No			7 Thru 9	Fill and Surface * 387,407 Sq.Ft.
1196D WA-1	City of Toledo, Willys Park	I					* 0.53 Ac.			No			10	Fill Existing Channel and Surface * 22,934 Sq.Ft.
1196D WA-2	City of Toledo, Willys Park	I					* 1.23 Ac.			No			* 10 & 11	Fill Existing Channel and Surface * 53,734 Sq.Ft.
1196D WA-3	City of Toledo, Willys Park	I					* 0.89 Ac.			No			11	Fill Existing Channel and Surface * 38,866 Sq.Ft.
1198 WL	Kaiser Jeep Corp.(Test Track)	I	1521	127	12.59 Ac.	0	* 1.70 Ac.			No			10	* Total Wilco Properties = 94.36 Ac. # 73,805 Sq. Ft.
1198 WD	Kaiser Jeep Corp.(Test Track)	I	1521	127			* 0.02 Ac.			No			10	* 800 Sq.Ft.
1198 T-1	Kaiser Jeep Corp.(Test Track)	I	1521	127			* 0.64 Ac.			No			10	Grading and Access Road "B" Construction * 27,776 Sq.Ft.
1198 WD-1	Kaiser Jeep Corp.(Administration Area)	City	1521	127	* 13.54 Ac.	0	* 0.28 Ac.			No			12	* 12,201 Sq.Ft. # 589,631 Sq. Ft.
1198 X	Kaiser Jeep Corp.(Administration Area)	I	1521	127			* 0.03 Ac.			No			12	* 1,374 Sq. Ft.
1198 T-2	Kaiser Jeep Corp.(Administration Area)	City	1521	127			* 0.34 Ac.			No			10	Temporary Road * 14,814 Sq.Ft.
1198 WA	Kaiser Jeep Corp.(Administration Area)	City	1521	127			* 0.06 Ac.			No			12	* 2,500 Sq.Ft.
Luc.75-454 1198B WA	Rosinski, Casimer and Martha	I			4.130	0	.175			No			9	Driveway Construction
1199 WL	Tattersall, John H. William and Arthur	I	1830	526	1.18 Ac.	0	1.07 Ac.			Yes			11	Multiple (See Plans)
1199 T	Tattersall, John H. William and Arthur	I	1830	526			* 0.11 Ac.						11	Remove Building-* 4,508 Sq.Ft. BPR Part.
1199A WL	Carl P. & Evelyn A. Schall	I	1951	227	4532	0	867			Yes			11	Block Garage
1199B WL	Penney, Rex Thomas	I	1573	30	3839	0	2874			Yes			11	2 Story Frame House
1199B WA	Penney, Rex Thomas	I	1573	30			* 965						11	Remove House-* 965 Sq.Ft. BPR Part.
1199C WL	Westover, Dean M. and Virginia N.	I	1639	365	6310	0	6310			Yes			11	1 Story Frame House and Car Port
1199D WL	Kish, Alex W. and Mary C.	I	**See Remarks		27,093	0	20,014			Yes			11	2 Story Frame House and Frame Garage
1199D WA	Kish, Alex W. and Mary C.	I					* 7079						11	Remove House-* 7079 Sq.Ft. BPR Part.
1199D EL	Kish, Alex W. and Mary C.	State					7079			No			11	** Vol. 1117, Pg. 350 Vol. 1120, Pg. 143

NOTE: A 40 Ft. Right of Way width was agreed to and used to calculate the PRO for North Cove Boulevard and Willys Parkway in Willys Park. A length of 505 Ft. (Sta. 11+65+ to Sta. 16+70+ New Park Road) was deducted from the length of North Cove Boulevard in Willys Park.

Note: Areas are in Sq.Ft. unless indicated in Acres (Ac.)

SCALE None HOWARD, NEEDLES, TAMMEN & BERGENDOFF
MADE REK DATE 1-69 CONSULTING ENGINEERS
TRCD DATE
CKD JLS DATE 10-69 KANSAS CITY CLEVELAND NEW YORK

F.T.H.	1199-EL Removed WA chgd to T	1-18-74
F.T.H.	1199B-EL Changed to WA	6-8-73
F.T.H.	1196-D PRO & Residue	9-13-70
F.T.H.	Area Change in Remarks Part 1198 WL	3-11-70
F.T.H.	Misc Changes	3-5-70
R.R.R.	1199A Area Change	2-9-70
R.R.R.	1199A Owner change	2-4-70
LCE's	1196-D PRO & Residue	1-12-70
LCE's	1196-D PRO & Residue	12-29-69
LCE's	Type of Funds on EL's & General	11-17-69
By	Description	Date
	REVISIONS	

FED. RD. DIVISION	STATE	PROJECT
2	OHIO	1-75-6(A)

168
296

3
17

SUMMARY OF ADDITIONAL RIGHT OF WAY REQUIRED

TOTAL NO. OF OWNERS 53
TOTAL NO. OF STRUCTURES 32

SHEET 2 OF 3

LUCAS COUNTY
CITY OF TOLEDO
TOLEDO EXPRESSWAY SYSTEM
EXPRESSWAY - PART 30
LUC 75-5.46

PARCEL NO.	OWNER	TYPE FUND	RECORDED		DEED AREA	TOTAL P.R.O.	TOTAL TAKE	P.R.O. IN TAKE	NET TAKE		NET RESIDUE		SHEET NO.	REMARKS
			BOOK	PAGE					LAND	BLDG.	LEFT	RIGHT		
2006 WL	The Babcock Dairy Company of Ohio	I	See Remarks		51,562	0	10,880		No		40,682		11	Vol.1176 Pg.66 Vol.1187 Pg.584
2006 S	The Babcock Dairy Company of Ohio	I					338						11	Vol.1462 Pg.53 Vol.1804 Pg.253
2010 WL	Born, Alice	I	1082,1793	390,394	5,848	0	620		Yes		5,228		11	1 Store Frame House
2010 WA	Born, Alice	I	1082,1793	390,394			2,380						11	Remove House
2011 WL	Garvin, Paul and Merle	I	967,1048	450,285	7,522	0	7,522		Yes				11	2 Story Frame House and Frame Garage
2011A WL	Kane, Louis and Eva	I	1728	504	3,854	0	3,854		Yes				11	2 Story Frame House
2011B WL	Dunstan, Arthur S.	I	533	195	3,849	0	3,849		Yes				11	2 Story Frame House
2011C WL	Schmidt, Richard and Beryle	I	1853	458	5,132	0	2,700		No				11	
2011C WD	Schmidt, Richard and Beryle	I	1853	458			2,432		Yes				11	2 Story Frame House
2012 WL	Logan, Elsie	I	1204	537	1.68 Ac.	0	1.68 Ac.		Yes				11, 12 & 14	1 Story Block(Roller Rink)
2012 EL	Logan, Elsie	STATE	1981	713	15,752									Sold as E.L. 2/27/73, De/rea Land Company
2013 WL	Metromedia Inc.	I	1868	324	10,204	0	10,204		No				12	
2014 WL	Kamberling, Joanne H.	I	1787,1795	271,102	17,100	0	17,100		Yes				12 & 14	1 Story Block Building
2014A WL	Hullibarger, Thelma C.	I	1854	51	3,600	0	3,600		Yes				14	2 Story Brick Building
2014B WL	Union Oil Company of California	I	1564	273	6,300	0	6,300		Yes				14	1 Story Block Building & Storage Tanks
2014C WD	The Standard Oil Company	I	943	198	11,231	0	1,830		No		9,401		14 & 15	
2014C WA	The Standard Oil Company	I	943	198			1,100						14 & 15	Grading
2014D WD	The Gallagher Company	I	See Remarks		36,505	0	950		No		35,555		14 & 15	987/129/1066/57/1508/359/1109/318/1201/67/1068/55
2014D T	The Gallagher Company	I					1,863						14 & 15	Grading and Asphalt Replacement
**	2014E WD-1	Weissenberger, Carl F. Inc.	City	1711,1327	9, 89	84,534	3425	6,111	Yes		73,850		14 & 16	1 Story Block & Storage Tanks
**	2014E WD-2	Weissenberger, Carl F. Inc.	City	1711,1327	9, 89			4,573	3425	1148	No		14 & 16	
**	2014E T	Weissenberger, Carl F. Inc.	City	1711,1327	9, 89			3,122					14 & 16	Asphalt Replacement & Gasoline Tanks
**	2014E WA-1	Weissenberger, Carl F. Inc.	City	1711,1327	9, 89			760					14 & 16	
**	2014E WA-2	Weissenberger, Carl F. Inc.	City	1711,1327	9, 89			154					14 & 16	Asphalt Replacement
**	2014E T-1	Weissenberger, Carl F. Inc.	City	1711,1327	9, 89			744					14 & 16	Asphalt Replacement
	2014F WD-1	Gallagher, John J. and Kathryn C.	I	1774	630	23,463	0	815	No		22,568		14 & 15	
	2014F WD-2	Gallagher, John J. and Kathryn C.	I	1774	630			80	No				14 & 15	
	2014F WA-1	Gallagher, John J. and Kathryn C.	I	1774	630			370					14 & 15	Asphalt Replacement
	2014F WA-2	Gallagher, John J. and Kathryn C.	I	1774	630			534					14 & 15	Asphalt Replacement
**	2015 WL	Ashland Oil and Refining Co.	I	1895	277	37,802	0	37,802	Yes				12 & 14	*0.87 Ac. 1 Sty. Gas Station & Tanks
**	2015A WD	Lay, Betty L.	City	1945	348	34,497	0	1,597	No		32,900		14 & 16	
**	2015A WA	Lay, Betty L.	City	1945	348			543					14 & 16	Asphalt Replacement
	2016 WL	Stebbins, Harry W. and Hilda W.	I	1636	218	25,985	0	25,985	Yes				12, 14 & 15	1 Story Block (Gas Station & Tanks)
	2016A WD	Burnham, Anna M.	I	1918	165	5,557	0	3,675	Yes		1882		14 & 15	2 Story Frame House
	2016A EL	Burnham, Anna M.	State	1918	165			1,882	Yes				14 & 15	Frame Garage
	2016B WD	White, Etelka, et. al.	I	1782	619	5,556	0	3,225	Yes		2331		14 & 15	2 Story Frame House
	2016B EL	White, Etelka, et. al.	State	1782	619			2,331	Yes				14 & 15	Frame Garage
	2016C WD	McKimmy, Gary N. and Linda	I	1935	512	5,555	0	2,775	Yes		2780		14 & 15	2 Story Frame House
	2016C EL	McKimmy, Gary N. and Linda	State	1935	512			2,780	No				14 & 15	
	2016D WD	Roach, Mabel M.	I	1432	412	5,554	0	2,400	Yes		3154		14 & 15	2 Story Frame House
	2016D WA	Roach, Mabel M.	I	1432	412			150					14 & 15	Remove House and Grading
	2016D EL	Roach, Mable M.	State	1432	412			3,154	No				14 & 15	
	2016E WD	Veler, Richard C. and Betty	I	1957	20	11,107	0	3,900	Yes				14 & 15	2 - 2 Story Frame Houses *3822 & 3824 Haverhill
	2016E WA	Veler, Richard C. and Betty	I	1957	20			1,200			7207		14 & 15	Remove Houses and Grading
	2016E EL	Veler, Richard C. and Betty	State	1957	20			7,207	Yes				14 & 15	2 Frame Garages
	2016F WD	Tath, Joseph J. and Anne	I	1837	240	5,552	0	1,538	Yes		4014		14 & 15	2 Story Frame House
	2016F WA	Tath, Joseph J. and Anne	I	1837	240			1,013					14 & 15	Remove House and Grading
	2016F EL	Tath, Joseph J. and Anne	State	1837	240			4,014	Yes				14 & 15	Frame Garage
	2016G WD	Weinlander, William M.C., et. al.	I	1214,1799	20,378	5,551	0	1,312	Yes		4239		14 & 15	2 Story Frame House
	2016G WA	Weinlander, William M.C., et. al.	I	1214,1799	20,378			1,238					14 & 15	Remove House and Grading
	2016G EL	Weinlander, William M.C., et. al.	State	1214,1799	20,378			4,239	Yes				14 & 15	Frame Garage
	2016H WD	Meek, Anna W.	I	1440	514	5,550	0	1,150	Yes		4400		14 & 15	2 Story Frame House
	2016H WA	Meek, Anna W.	I	1440	514			1,400					14 & 15	Remove House and Grading
	2016H EL	Meek, Anna W.	State	1440	514			4,400	Yes				14 & 15	Frame Garage
	2016J WD	Collins, Shirley Ann	I	1841,1510	5,303	5,500	0	1,050	Yes		4500		14 & 15	2 Story Frame House
	2016J WA	Collins, Shirley Ann	I	1841,1510	5,303			1,050					14 & 15	Remove House and Grading
	2016J EL	Collins, Shirley Ann	State	1841,1510	5,303			4,500	No				14 & 15	
	2016K WD	Bratton, Cloud E., et. al.	I	1909,1599	366,344	5,549	0	950	Yes		4599		14 & 15	2 Story Frame House
	2016K WA	Bratton, Cloud E., et. al.	I	1909,1599	366,344			1,150					14 & 15	Remove House and Grading
	2016K EL	Bratton, Cloud E., et. al.	State	1909,1599	366,344			4,599	Yes				14 & 15	Frame Garage

SCALE None HOWARD, NEEDLES, TAMMEN & BERGENDOFF
MADE REK DATE 7-69 CONSULTING ENGINEERS
TRCD. DATE _____
CKD. JLS DATE 10-69 KANSAS CITY CLEVELAND NEW YORK

** To be acquired by City of Toledo

Note: Areas are in Sq.Ft. unless indicated in Acres (Ac.)

By	Description	Date
CWE	General	11/1/69
LCE's	Area Parcel 2014 D-T	1-18-70
E.T.H.	Area Par. 2014E-WD & 2014FWD-1	3-5-70
E.T.H.	Note Deleted in Rt. Hand Margin	3-11-70
E.T.H.	Par. 2012EL Type Fund Added	1-18-74
LCE's	General	11-17-69
REVISIONS		

FED. RD. DIVISION	STATE	PROJECT
2	OHIO	1-75-6(4)



SUMMARY OF ADDITIONAL RIGHT OF WAY REQUIRED

TOTAL NO. OF OWNERS 53
TOTAL NO. OF STRUCTURES 32

SHEET 3 OF 3

LUCAS COUNTY
CITY OF TOLEDO
TOLEDO EXPRESSWAY SYSTEM
EXPRESSWAY - PART 30
LUC 75-5.46

PARCEL NO.	OWNER	TYPE FUND	RECORDED		DEED AREA	TOTAL P.R.O.	TOTAL TAKE	P.R.O. IN TAKE	NET TAKE		NET RESIDUE		SHEET NO.	REMARKS
			BOOK	PAGE					LAND	BLDG.	LEFT	RIGHT		
2016L WD	Human, Dave A. and Dorothy L.	I	1290	358	5,548	0	875		Yes		4673	14 & 15	2 Story Frame House	
2016L WA	Human, Dave A. and Dorothy L.	I	1290	358			1,225					14 & 15	Remove House	
2016L EL	Human, Dave A. and Dorothy L.	State	1290	358			4,673		Yes			14 & 15	Frame Garage	
2016M WD	Schlachter, Marcella	I	1406	339	5,548	0	825		Yes		4723	14 & 15	2 Story Frame House	
2016M WA	Schlachter, Marcella	I	1406	339			1,275					14 & 15	Remove House	
2016M EL	Schlachter, Marcella	State	1406	339			4,723		Yes			14 & 15	Frame Garage	
2016N WD	Meyers, Annabell Sharpe and Sharpe, Grace Lowder	I	1683	230	5,547	0	775		Yes		4772	14 & 15	1 Story Frame House	
2016N WA	Meyers, Annabell Sharpe and Sharpe, Grace Lowder	I	1683	230	5,547		1,835					14 & 15	Remove House	
2016N EL	Meyers, Annabell Sharpe and Sharpe, Grace Lowder	State	1683	230	5,547		4,772		Yes			14 & 15	Frame Garage	
**	2016P WD	F. Jim Marsrow Company	City	1836	617	7,395	0	520		No		6,875	14 & 15	
**	2016P T	F. Jim Marsrow Company	City	1836	617			385					14 & 15	Grading and Driveway Construction
**	2016Q WD	Pohl, Otto F.	City	1025	593	7,393	0	460		No		6,933	14 Thru 16	
**	2016Q T	Pohl, Otto F.	City	1025	593			376					14 Thru 16	Grading and Driveway Construction
**	2016R WD	Kuhn, Robert J. and Victoria R.	City	1864	93	7,392	0	420		No		6,972	14 Thru 16	
**	2016R T	Kuhn, Robert J. and Victoria R.	City	1864	93			380					14 Thru 16	Grading, Driveway Steps and Sidewalk Construction
**	2016V WD	Utz, Joseph C. and Clara	City	1937	295	7,391	0	320		No		7,071	14 & 16	
**	2016V T	Utz, Joseph C. and Clara	City	1937	295			460					14 & 16	Grading, Driveway and Sidewalk Construction
**	2016W WD-1	Hillcrest Investment Inc.	City	1888	530	43,054	0	480		No		42,239	14 & 16	
**	2016W WD-2	Hillcrest Investment Inc.	City	1888	530			335		No			14 & 16	
**	2016W T	Hillcrest Investment Inc.	City	1888	530			960					14 & 16	Driveway Construction and Pavement Replacement
	2017 WL	The Mather Spring Company	I	1868,820	472,278	**2.50 Ac.	0	*56,618		No		0.95 Ac.	12	* 1.30 Ac. **109,020 Sq.Ft.
	2017 WL-1	The Mather Spring Company	I	1868,820	472,278			*4,394		No			12	* 0.10 Ac.
	2017 WD	The Mather Spring Company	City	1868,820	472,278			*6,705		No			12	* 0.15 Ac. Includes 2606 Sq.Ft. BPR Part.
	2017 X	The Mather Spring Company	I	1868,820	472,278			*20,383		No			12	* 0.47 Ac.
	2018 S	City of Toledo, Collinwood Cemetery	I	1480	457	3.95 Ac.	0	*5,031		No		3.95 Ac.	12	* 0.12 Ac.
	2018 T	City of Toledo, Collinwood Cemetery	I	1480	457			*18,195					12	Temporary Road * 0.42 Ac.
	2019 WL	Weiser, Jean	I	1416	569	*1.82 Ac.	0	**10,714		No		1.57 Ac.	12 & 13	* 79,173 Sq.Ft. ** 0.25 Ac.
	2019 X	Weiser, Jean	I	1416	569			*7,954		No			12 & 13	* 0.18 Ac.
	2019 T	Weiser, Jean	I	1416	569			*1.10 Ac.					12 & 13	Temporary Road * 48,074 Sq.Ft.
	2019 T-1	Weiser, Jean	I	1416	569			*8,910					12 & 13	Temporary Road * 0.20 Ac.
	2023 WL	Hagen, Gerald and Barbara	I	1710,1847	435,144	*1.74 Ac.	0	**5,398		No		1.43 Ac.	12	* 75,830 Sq.Ft. ** 0.12 Ac.
	2023 WD	Hagen, Gerald and Barbara	City	1710,1847	435,144			*8,250		No			12	* 0.19 Ac. Includes 1,862 Sq.Ft. BPR Part.
	2023 X	Hagen, Gerald and Barbara	I	1710,1847	435,144			*19,098		No			12	* 0.44 Ac.
	2023 S	Hagen, Gerald and Barbara	City	1710,1847	435,144			*3,706		No			12	* 0.08 Ac.
	2023 T	Hagen, Gerald and Barbara	I	1710,1847	435,144			*39,378		Yes			12	Temporary Road * 0.90 Ac. 1 Sty. Fr. Fruit House
	2024 WL	Diamond Realty Inc.	I	1872	695	7.55* Ac.	0	*184		No		7.55 ± Ac.	13	* 0.004 Ac.
	2024 X	Diamond Realty Inc.	I	1872	695			*39,536		No			13	* 0.91 Ac. ** 171,904 Sq.Ft.
	2024A WVR	Tillotson Manufacturing Company	I	1894	7	** 3.95 Ac.	0	*1.01 Ac.		No		.77 Ac.	13	Joint Use Concept PPM-80-5, Attachment 3 * 43,946 Sq.Ft.
	2024A WD	Tillotson Manufacturing Company	City	1894	7			*2,768		No			12 & 13	* 0.06 Ac.
	2024A X	Tillotson Manufacturing Company	I	1894	7			*19,344		No			13	
	2024A T	Tillotson Manufacturing Company	I	1894	7			*9,368		No			12 & 13	Temporary Road * 0.21 Ac.
	2024A WA	Tillotson Manufacturing Company	I	1894	7			*1.42 Ac.		No			13	Grading * 61,649 Sq.Ft.
	2024A-WA-1	Tillotson Manufacturing Co.	I	1894	7			14,166		NO			13	Grading
#	2025 Aerial	Penn Central Railroad	I	See Remarks			0	13,069		No			17	Vol. 23 Pages 154, 177, 291
	2025 A	Penn Central Railroad	I					1,261		No			17	Bridge Footing
	2025 B	Penn Central Railroad	I					1,249		No			17	Bridge Footing
	2025 T-1	Penn Central Railroad	I					3,549		No			17	Bridge Construction
	2025 T-2	Penn Central Railroad	I					3,535		No			17	Bridge Construction
	2026 Aerial	Michigan Central Railroad	I	See Remarks			0	13,190		No			17A	Vol. 23 Pg. 541 Vol. 96 Pg. 489 Vol. 168 Pg. 276 Vol. 454 Pg. 157
	2026 A	Michigan Central Railroad	I					116		No			17A	Bridge Footing
	2026 B	Michigan Central Railroad	I					1,389		No			17A	Bridge Footing
	2026 X	Michigan Central Railroad	I					3,200		No			17A	
	2026 T-1	Michigan Central Railroad	I					3,513		No			17A	Bridge Construction
	2026 T-2	Michigan Central Railroad	I					3,500		No			17A	Bridge Construction
	2006A WD	The Delrea Land Co., an Ohio Corporation	I	1365	415	38.695	0	188		No		38,507	14	

SCALE None HOWARD, NEEDLES, TAMMEN & BERGENDOFF
MADE REK DATE 1-69 CONSULTING ENGINEERS
TRCD. DATE KANSAS CITY CLEVELAND NEW YORK
CKD JLS DATE 10-69

For Railroad Areas of Overlap
See R/W Sheet No. 17

** To be acquired by City of Toledo

Note: Areas are in Sq.Ft. unless indicated in Acres(Ac.)

F.T.H.	Par. 2024NR chgd to WL	10-10-70
CWF	General	11/18/69
F.T.H.	Area Par. 2016Q-T	3-5-70
F.T.H.	Area chg Par. 2024A-X	3-11-70
F.T.H.	2017 WL 2017 S 2017 T	3-21-70
F.T.H.	Vol. 16 WL Par. 2014 2024A City	5-1-70
	Notes added to 2017ND, Area in Plan	
LCE's	General	11-17-69
By	Description	Date
	REVISIONS	

Scanned July 1977

TOWNSHIP 9 SOUTH RANGE 7 EAST

STATE JOB NO. 02397(0)

FED. RD. DIVISION	STATE	PROJECT
2	OHIO	1-75-6(4)

170
296

5
17

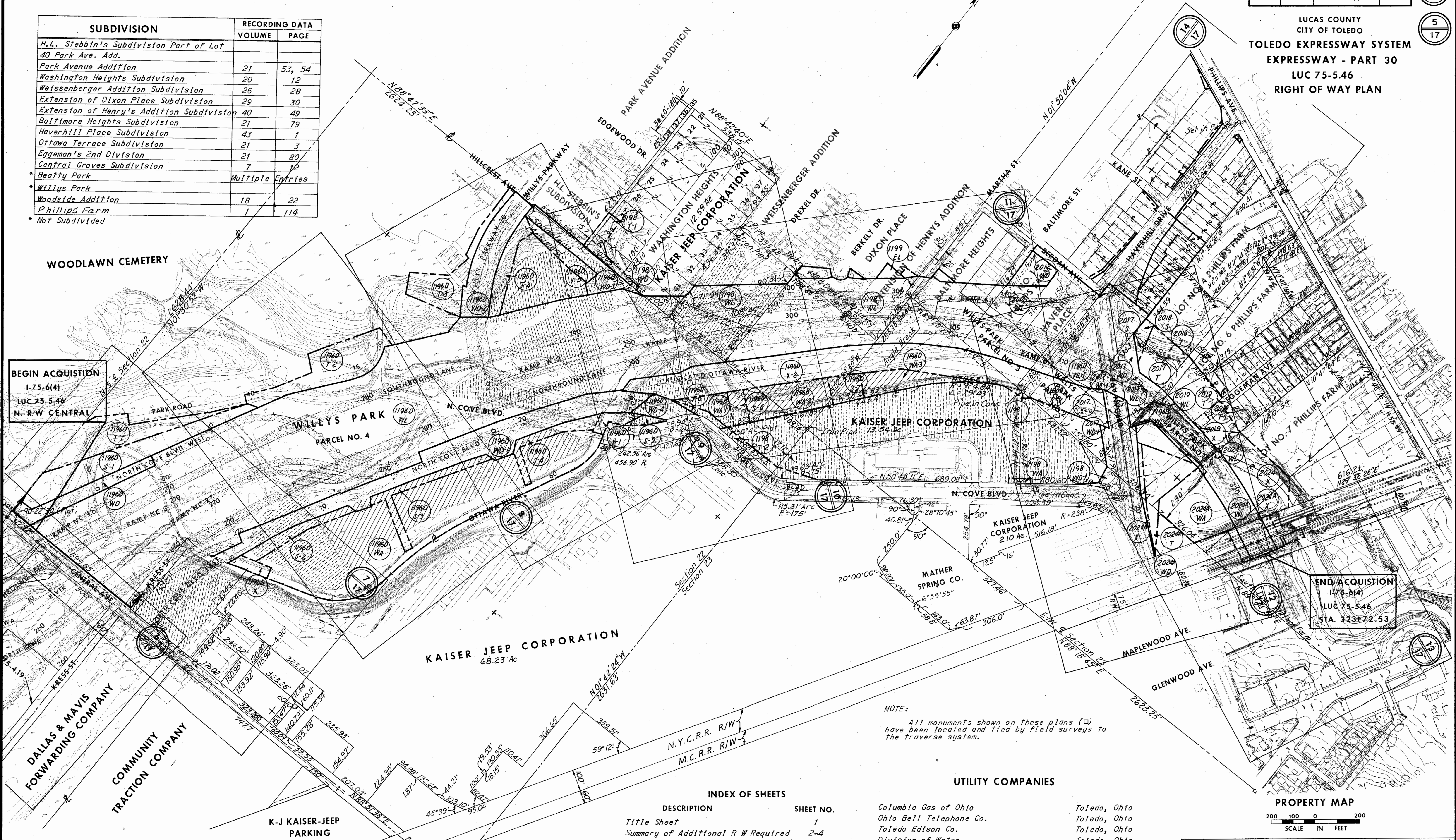
LUCAS COUNTY
CITY OF TOLEDO
TOLEDO EXPRESSWAY SYSTEM
EXPRESSWAY - PART 30
LUC 75-5.46
RIGHT OF WAY PLAN

SUBDIVISION	RECORDING DATA	
	VOLUME	PAGE
H.L. Stebbin's Subdivision Part of Lot 40 Park Ave. Add.		
Park Avenue Addition	21	53, 54
Washington Heights Subdivision	20	12
Weissenberger Addition Subdivision	26	28
Extension of Dixon Place Subdivision	29	30
Extension of Henry's Addition Subdivision	40	49
Baltimore Heights Subdivision	21	79
Haverhill Place Subdivision	43	1
Ottawa Terrace Subdivision	21	3
Eggeman's 2nd Division	21	80
Central Groves Subdivision	7	12
*Beatty Park	Multiple Entries	
*Willys Park		
Woodside Addition	18	22
Phillips Farm	1	114
* Not Subdivided		

WOODLAWN CEMETERY

BEGIN ACQUISITION
1-75-6(4)
LUC 75-5.46
N. R.W. CENTRAL

END ACQUISITION
1-75-6(4)
LUC 75-5.46
STA. 323+72.53



NOTE:
All monuments shown on these plans (□) have been located and tied by field surveys to the traverse system.

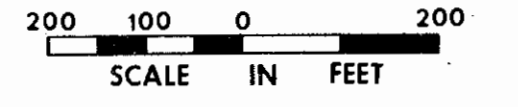
UTILITY COMPANIES

Columbia Gas of Ohio	Toledo, Ohio
Ohio Bell Telephone Co.	Toledo, Ohio
Toledo Edison Co.	Toledo, Ohio
Division of Water	Toledo, Ohio
Division of Communication Services	Toledo, Ohio
Division of Sanitary and Storm Sewers	Toledo, Ohio
AT&T	Toledo, Ohio

INDEX OF SHEETS

DESCRIPTION	SHEET NO.
Title Sheet	1
Summary of Additional R W Required	2-4
Property Map	5
50-Scale R W Plans	6-14
20-Scale R W Haverhill Drive	15-16
20-Scale Railroad R W Plat	17

PROPERTY MAP



SCALE 1"=200'
HOWARD, NEEDLES, TAMMEN & BERGENDOFF
CONSULTING ENGINEERS
KANSAS CITY CLEVELAND NEW YORK

K-J KAISER-JEEP PARKING

- Existing Parking
- Additional Parking

Pike Nail

NO.	REVISION	BY	DATE
1	General	LCE's	11-17-69

WOODLAWN CEMETERY

TOWNSHIP 9 SOUTH RANGE 7 EAST

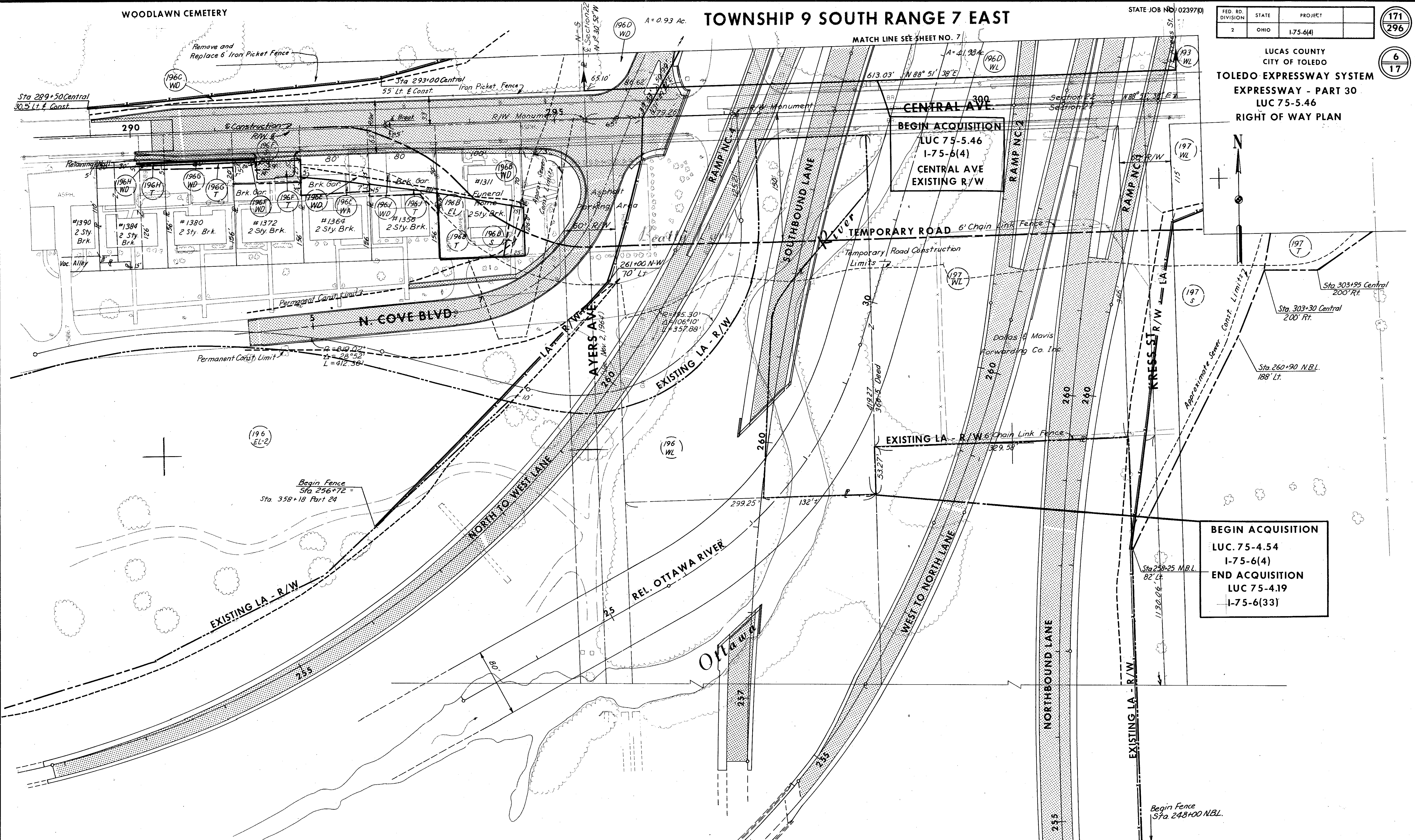
STATE JOB NO. 02397(0)

FED. RD. DIVISION	STATE	PROJECT
2	OHIO	1-75-6(4)

171
296

6
17

LUCAS COUNTY
CITY OF TOLEDO
TOLEDO EXPRESSWAY SYSTEM
EXPRESSWAY - PART 30
LUC 75-5.46
RIGHT OF WAY PLAN



NOTE: ALL PARCEL NUMBERS ARE PROCEEDED BY A ONE
EXAMPLE: 195 IS PARCEL NUMBER 1195

NOTE: All monuments shown on these plans (□) have been located and tied by field surveys to the traverse system.

SCALE 1" = 50'
MADE BY REX DATE 1-69
TRCD BY RHP DATE 1-69
CHKD BY JDE DATE 10-69
HOWARD, NEEDLES, TAMMEN & BERGENDOFF
CONSULTING ENGINEERS
KANSAS CITY CLEVELAND NEW YORK

NO.	REVISION	DATE	BY
2	Bearing Direction chg on Central Ave	3-11-70	F.T.H.
1	Par. 1196 D-WL Area, & Dimens. in Upper L.H. Cor.	3-5-70	F.T.H.

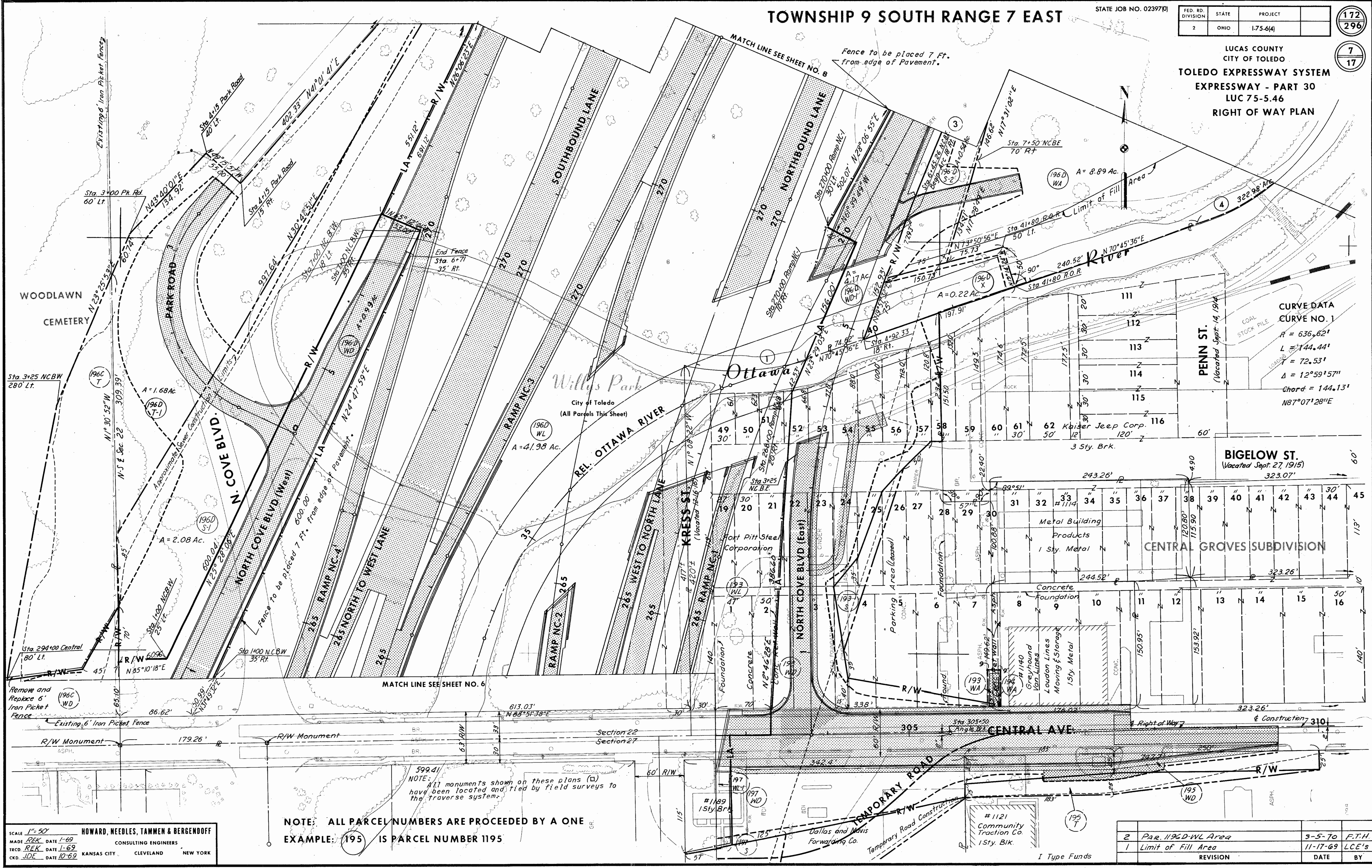
I Type Funds

FED. RD. DIVISION	STATE	PROJECT
2	OHIO	1-75-6(4)

172
296

7
17

LUCAS COUNTY
CITY OF TOLEDO
TOLEDO EXPRESSWAY SYSTEM
EXPRESSWAY - PART 30
LUC 75-5.46
RIGHT OF WAY PLAN



SCALE 1" = 50'
 MADE REK DATE 1-69
 TRCD. REK DATE 1-69
 CKD. JDE DATE 10-69
HOWARD, NEEDLES, TAMMEN & BERGENDOFF
 CONSULTING ENGINEERS
 KANSAS CITY, CLEVELAND, NEW YORK

NOTE: ALL PARCEL NUMBERS ARE PRECEDED BY A ONE
 EXAMPLE: 195 IS PARCEL NUMBER 1195

REVISION	DATE	BY
2	3-5-70	F.T.H.
1	11-17-69	LCE's

TOWNSHIP 9 SOUTH RANGE 7 EAST

STATE JOB NO. 02397(0)

FED. RD. DIVISION	STATE	PROJECT
2	OHIO	1-75-6(4)

173
296

8
17

LUCAS COUNTY
CITY OF TOLEDO
TOLEDO EXPRESSWAY SYSTEM
EXPRESSWAY - PART 30
LUC 75-5.46
RIGHT OF WAY PLAN

CURVE DATA
CURVE NO. 2
R = 217.00'
L = 235.67'
T = 130.97'
Δ = 62°13'27"
Chord = 224.25'
N05°28'35"E

CURVE DATA
CURVE NO. 4
R = 286.48'
L = 322.98'
T = 181.09'
Δ = 64°55'48"
Chord = 306.15'
N38°27'42"E

CURVE NO. 5
R = 1432.39'
L = 469.20'
T = 236.72'
Δ = 18°46'05"
Chord = 467.11'
N15°32'51"E

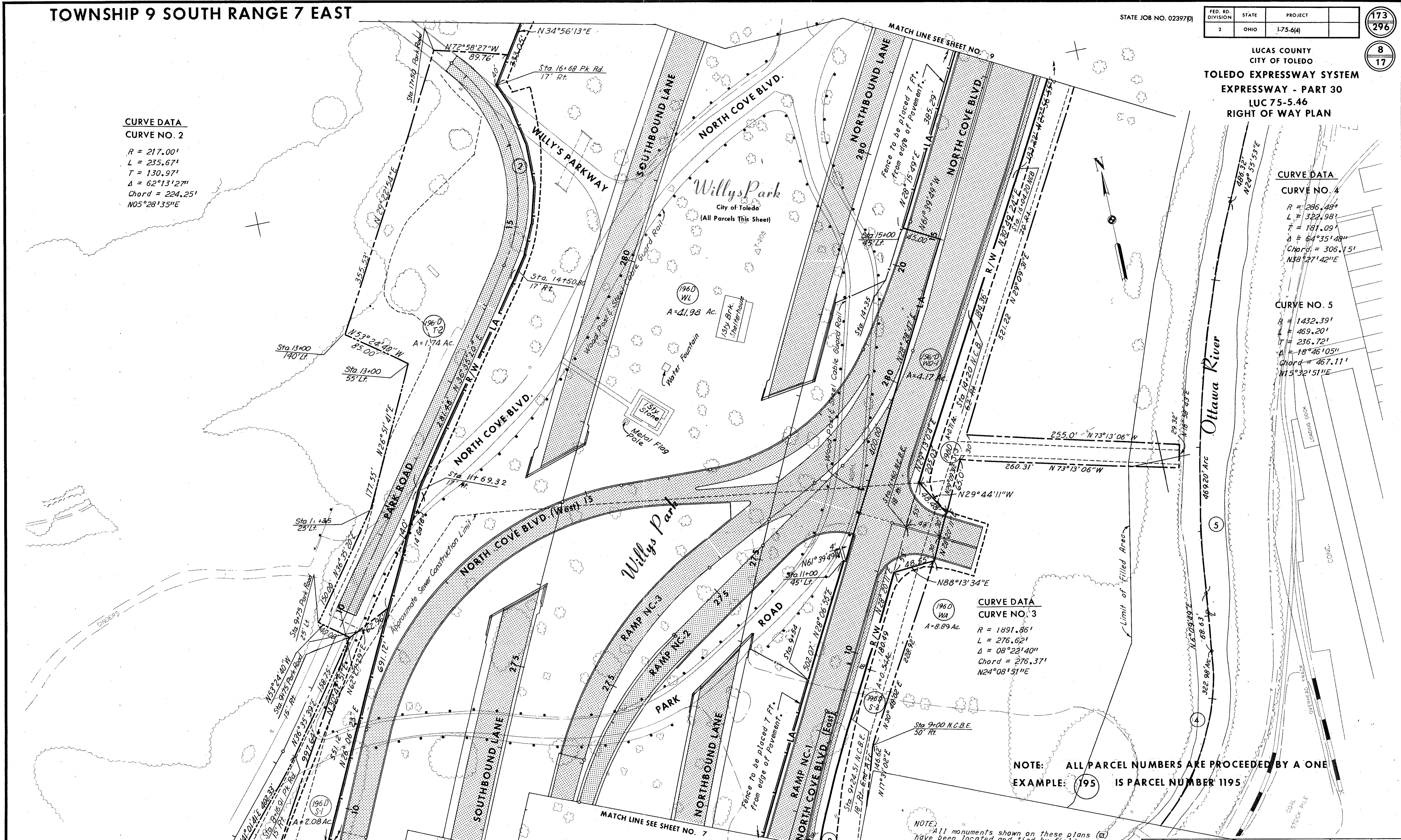
CURVE DATA
CURVE NO. 3
R = 1891.86'
L = 276.62'
Δ = 08°22'40"
Chord = 276.37'
N24°08'51"E

NOTE: ALL PARCEL NUMBERS ARE PRECEDED BY A ONE
EXAMPLE: 195 IS PARCEL NUMBER 1195

NOTE: All monuments shown on these plans (□) have been located and tied by field surveys to the traverse system.

SCALE 1" = 50'
HOWARD, NEEDLES, TAMMEN & BERGENDOFF
MADE BY REK DATE 1-69 CONSULTING ENGINEERS
TRCD. REK DATE 1-69
CKD. J.D.E. DATE 10-69 KANSAS CITY. CLEVELAND. NEW YORK

2	Areas Per. 1196D-5-2, 1196D-WL	3-5-70	F.T.H.
1	Limit of Filled Area	11-17-69	LCE's
NO.	REVISION	DATE	BY



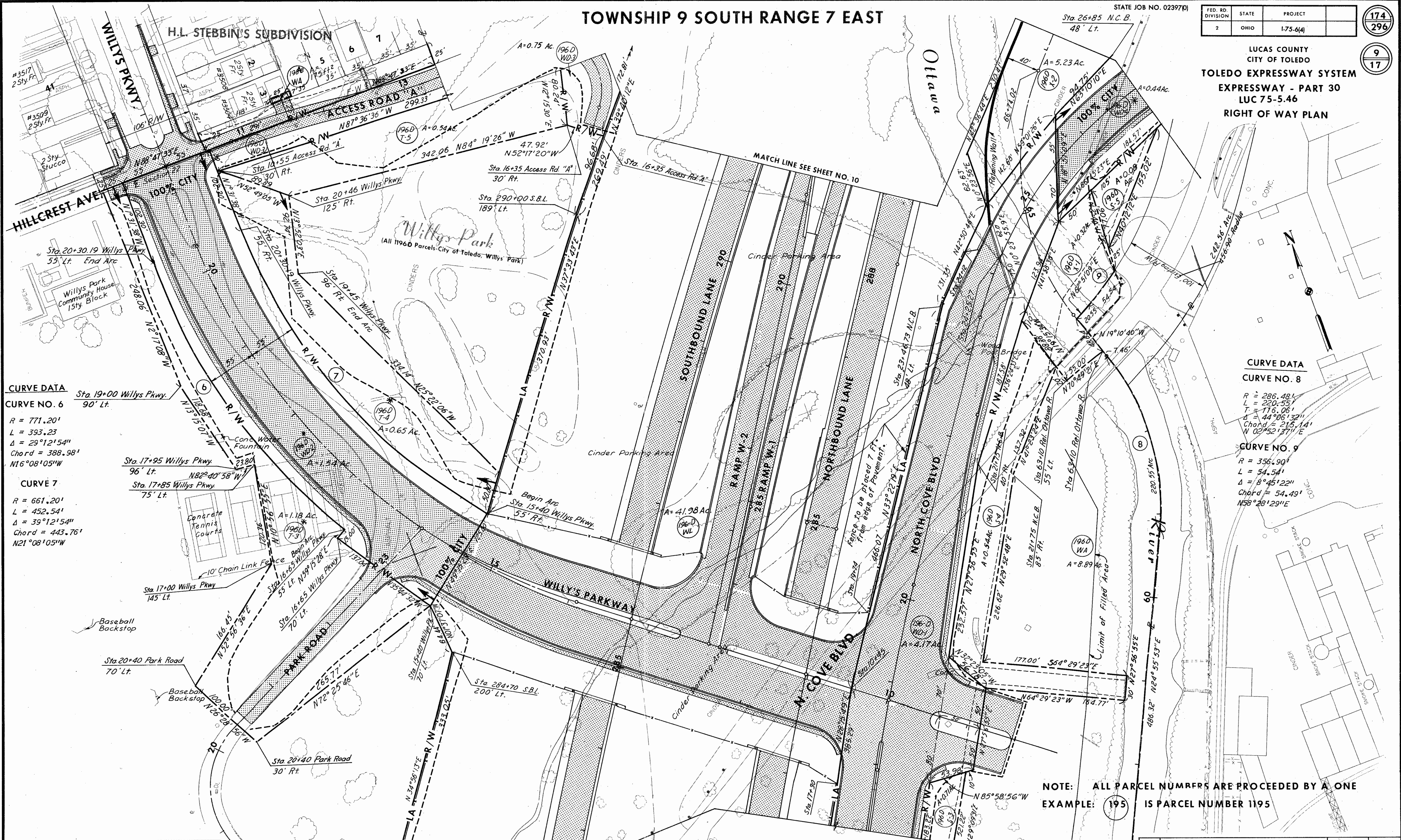
TOWNSHIP 9 SOUTH RANGE 7 EAST

STATE JOB NO. 02397(0)

FED. RD. DIVISION	STATE	PROJECT
2	OHIO	1-75-6(4)

174
296
9
17

LUCAS COUNTY
CITY OF TOLEDO
TOLEDO EXPRESSWAY SYSTEM
EXPRESSWAY - PART 30
LUC 75-5.46
RIGHT OF WAY PLAN



CURVE DATA

CURVE NO. 6
Sta. 19+00 Willys Pkwy.
90' Lt.
R = 771.20'
L = 393.23
Δ = 29°12'54"
Chord = 388.98'
N16°08'05"W

CURVE 7
R = 661.20'
L = 452.54'
Δ = 39°12'54"
Chord = 443.76'
N21°08'05"W

CURVE DATA

CURVE NO. 8
R = 286.48'
L = 220.55'
Δ = 116.06'
Chord = 215.14'
N 02°52'37"E

CURVE NO. 9
R = 356.90'
L = 54.54'
Δ = 8°45'22"
Chord = 54.49'
N58°28'29"E

NOTE: ALL PARCEL NUMFRS ARE PROCEEDED BY A ONE
EXAMPLE: 195 IS PARCEL NUMBER 1195

SCALE 1"=50'
HOWARD, NEEDLES, TAMMEN & BERGENDOFF
MADE PER DATE 1-69 CONSULTING ENGINEERS
TRCD. REF. DATE 1-69 KANSAS CITY CLEVELAND NEW YORK
CKD. JDE DATE 10-69

NOTE: All monuments shown on these plans (□) have been located and tied by field surveys to the Traverse system.

I Type Funds
* 100% City Funds

2	Area-Par 1196-DWL, 1196 D, S-4	9-5-70	F.T.H.
1	Limit of Filled Area	11-17-69	LCE's
NO.	REVISION	DATE	BY

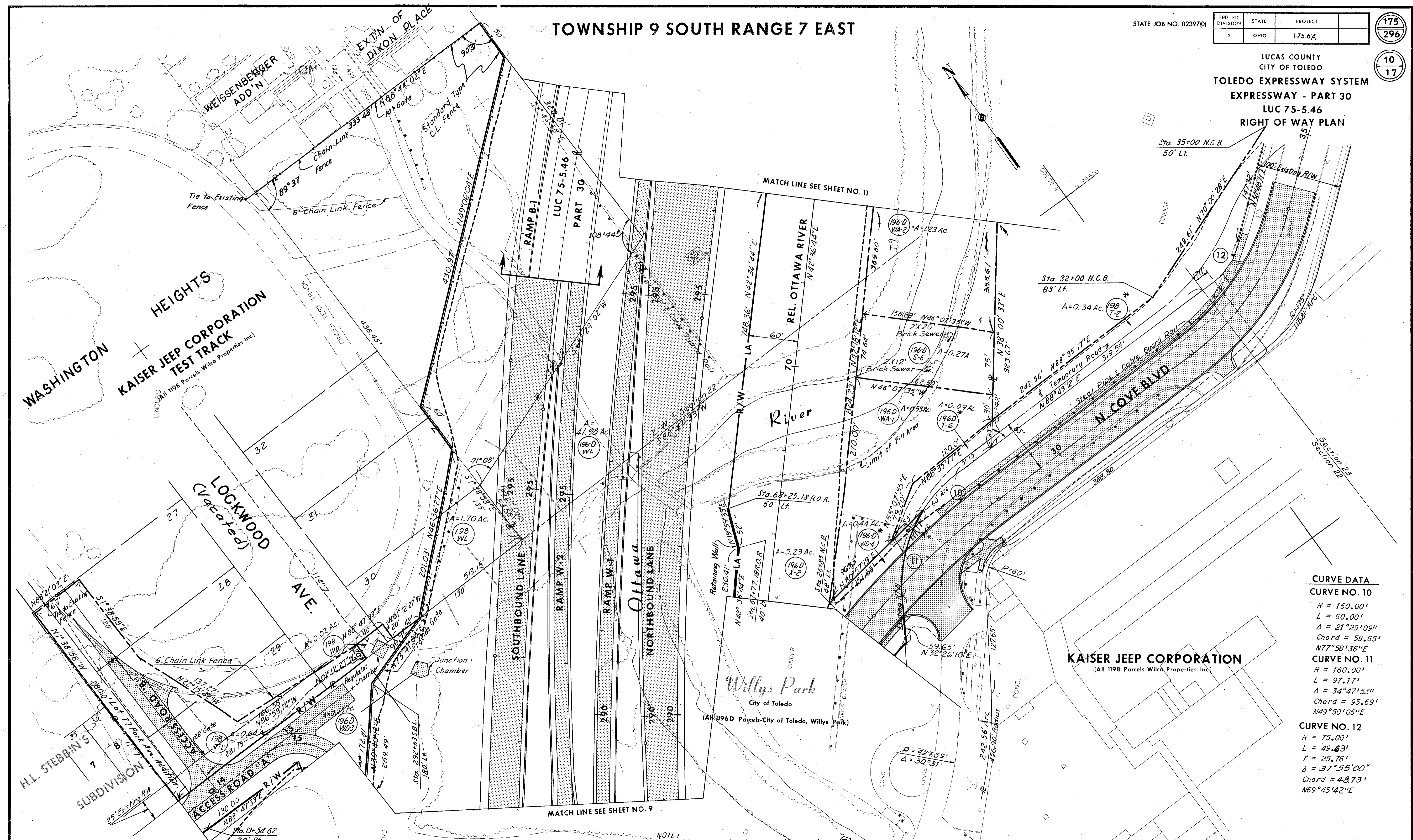
TOWNSHIP 9 SOUTH RANGE 7 EAST

STATE JOB NO. 02397(0)

FED. RD. DIVISION	STATE	PROJECT
2	OHIO	1-75-6(4)

175
296
10
17

LUCAS COUNTY
CITY OF TOLEDO
TOLEDO EXPRESSWAY SYSTEM
EXPRESSWAY - PART 30
LUC 75-5.46
RIGHT OF WAY PLAN



CURVE DATA

CURVE NO. 10
 R = 160.00'
 L = 60.00'
 Δ = 21°29'09"
 Chord = 59.65'
 N77°58'36"E

CURVE NO. 11
 R = 160.00'
 L = 97.17'
 Δ = 34°47'53"
 Chord = 95.69'
 N49°50'06"E

CURVE NO. 12
 R = 75.00'
 L = 49.63'
 T = 25.76'
 Δ = 37°55'00"
 Chord = 48.73'
 N69°45'42"E

NOTE: ALL PARCEL NUMBERS ARE PROCEEDED BY A ONE
 EXAMPLE: (195) IS PARCEL NUMBER 1195

NOTE: All monuments shown on these plans (□) have been located and tied by field surveys to the traverse system.

SCALE 1"=50'
 MADE REK DATE 1-69
 TRCD REK DATE 1-69
 CKD DATE
 HOWARD, NEEDLES, TAMMEN & BERGENOFF
 CONSULTING ENGINEERS
 KANSAS CITY CLEVELAND NEW YORK

3	Chg. Δ on Curve 12	3-11-70	F.T.H.
2	Area, Par. 1196 DWL - Dimensions	3-5-70	F.T.H.
1	Fence Note	11-17-69	LGE's
NO.	REVISION	DATE	BY

I Type Funds
 * 100% City Funds

TOWNSHIP 9 SOUTH RANGE 7 EAST

DIXON PLACE

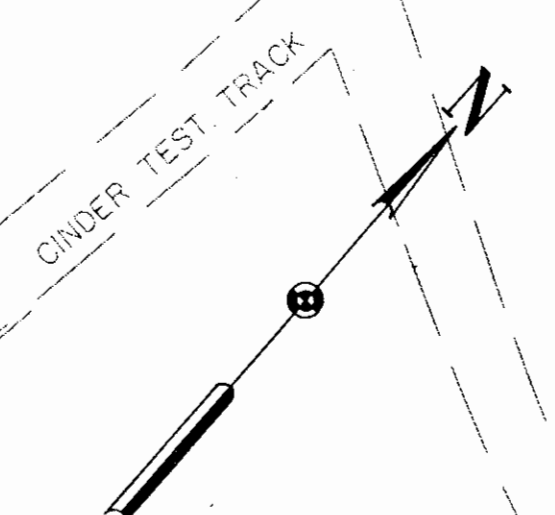
STATE JOB NO. 02397(7)

FED. RD. DIVISION	STATE	PROJECT
2	OHIO	1.75-6(4)

176
296

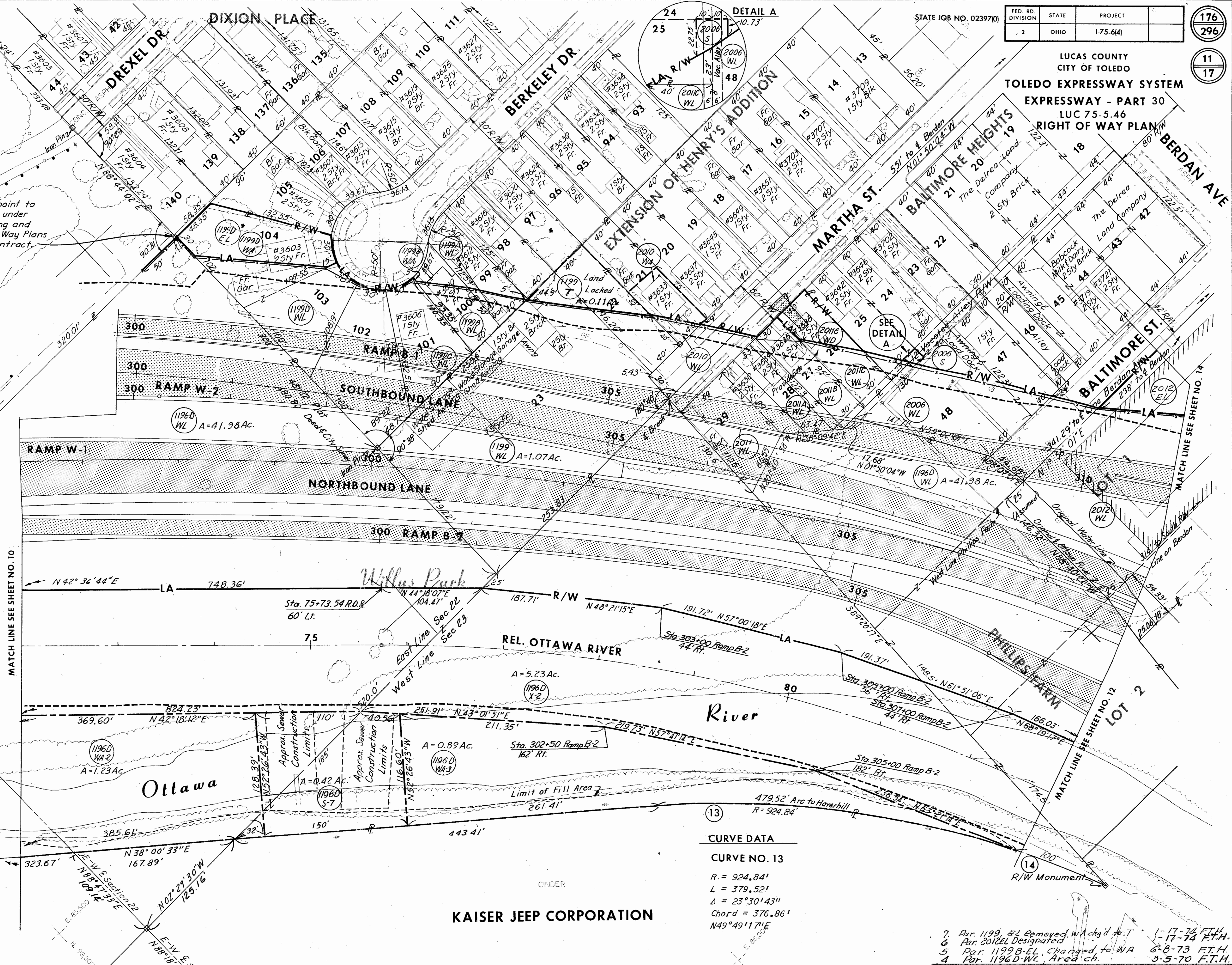
11
17

LUCAS COUNTY
CITY OF TOLEDO
TOLEDO EXPRESSWAY SYSTEM
EXPRESSWAY - PART 30
LUC 75.5.46
RIGHT OF WAY PLAN



Fencing and Gates from this point to Berdan Avenue will be placed under this contract. All other fencing and gate shown on these Right of Way Plans will be placed under future contract.

PARCEL	OWNER	AREA
1196D WL	City of Toledo, Willys Park	41.93 Ac.
1196D X-2	City of Toledo, Willys Park	5.23 Ac.
1196D S-7	City of Toledo, Willys Park	0.42 Ac.
1196D WA-2	City of Toledo, Willys Park	1.23 Ac.
1196D WA-3	City of Toledo, Willys Park	0.89 Ac.
1199 WL	Tattersall, John H. & William & Arthur	1.07 Ac.
1199 T	Tattersall, John H. & William & Arthur	0.11 Ac.
1199A WL	Carl R. & Evelyn A. Schall	867
1199B WL	Penney, Rex Thomas	2,874
1199B WA	Penney, Rex Thomas	965
1199C WL	Westover, Dean M. and Virginia N.	6,310
1199D WL	Kish, Alex W. and Mary C.	20,014
1199D EL	Kish, Alex W. and Mary C.	7,079
1199D WA	Kish, Alex W. and Mary C.	7,079
2006 S	The Babcock Dairy Co. of Ohio	338
2006 WL	The Babcock Dairy Co. of Ohio	10,880
2010 WL	Born, Alice	800
2010 WA	Born, Alice	2,200
2011 WL	Garvin, Paul and Merle	7,522
2011A WL	Kane, Louis and Eva	3,854
2011B WL	Dunstan, Arthur S.	3,849
2011C WL	Schmidt, Richard and Beryle	2,700
2011C WD	Schmidt, Richard and Beryle	2,432
2012 WL	Logan, Elsie	1,684
2012 EL	Logan, Elsie	15,752.5



CURVE DATA

CURVE NO. 13

R = 924.84'
L = 379.52'
Δ = 23°30'43"
Chord = 376.86'
N49°49'17"E

KAISER JEEP CORPORATION

NOTE: All monuments shown on these plans (□) have been located and tied by field surveys to the traverse system.

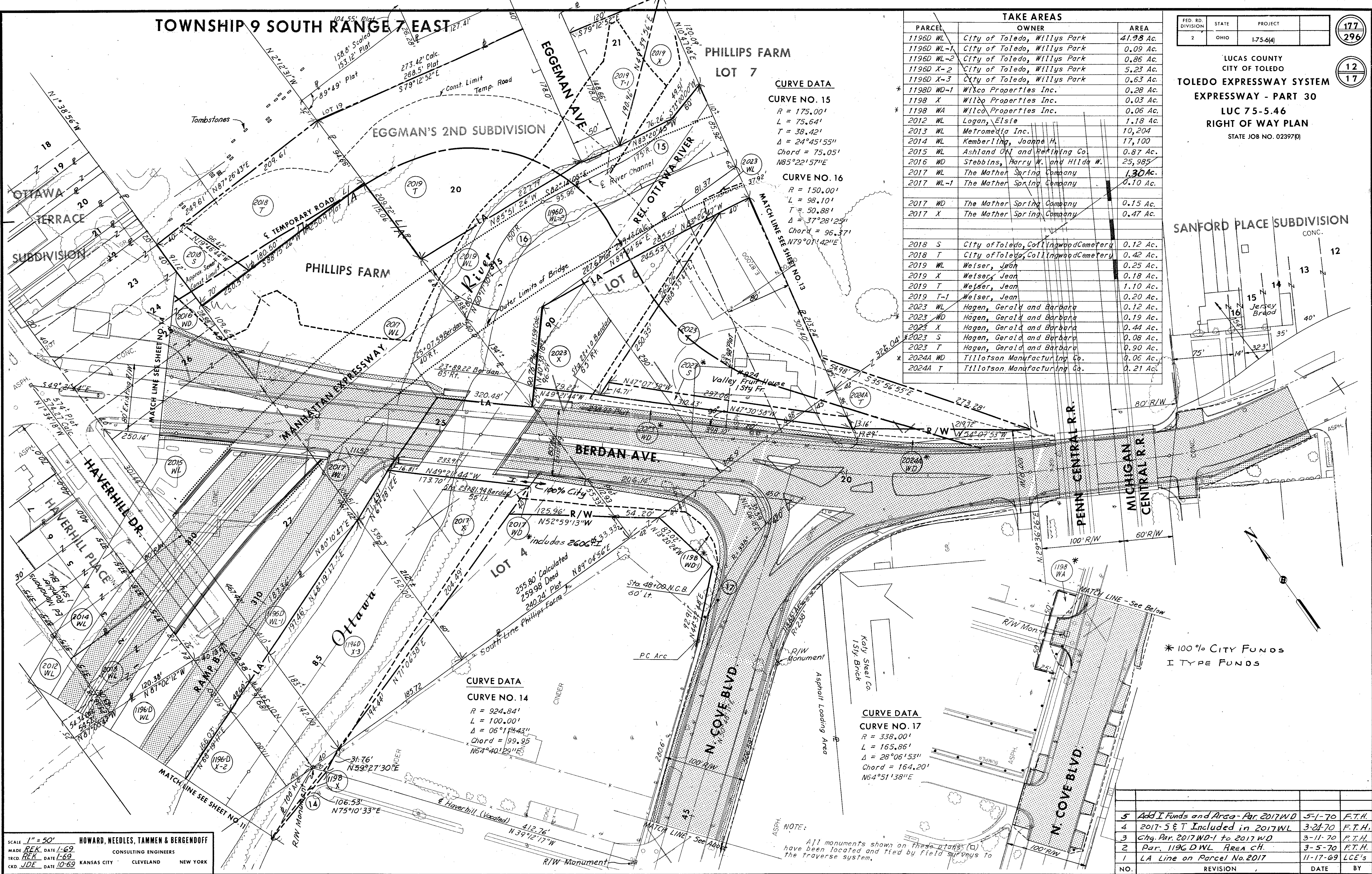
- 7. Par. 1199, EL Removed, WA chgd to T 1-17-74 F.T.H.
- 6. Par. 2012EL Designated 1-17-74 F.T.H.
- 5. Par. 1199B-EL, changed to WA 6-8-73 F.T.H.
- 4. Par. 1196D-WL, Area ch. 3-5-70 F.T.H.

3	Par. 1199A-WL, Area Change	2-9-70	R.E.R.
2	Par. 1199A-WL, Owner change	2-4-70	R.E.R.
1	State Funds	11-17-69	L.C.E.'s
NO.	REVISION	DATE	BY

* State Funds
I Type Funds

SCALE 1" = 50'
MADE REX DATE 1-69
TRCD. REK DATE 1-69
CKD. JDE DATE 10-69
HOWARD, NEEDLES, TAMMEN & BERGENDOFF
CONSULTING ENGINEERS
KANSAS CITY CLEVELAND NEW YORK

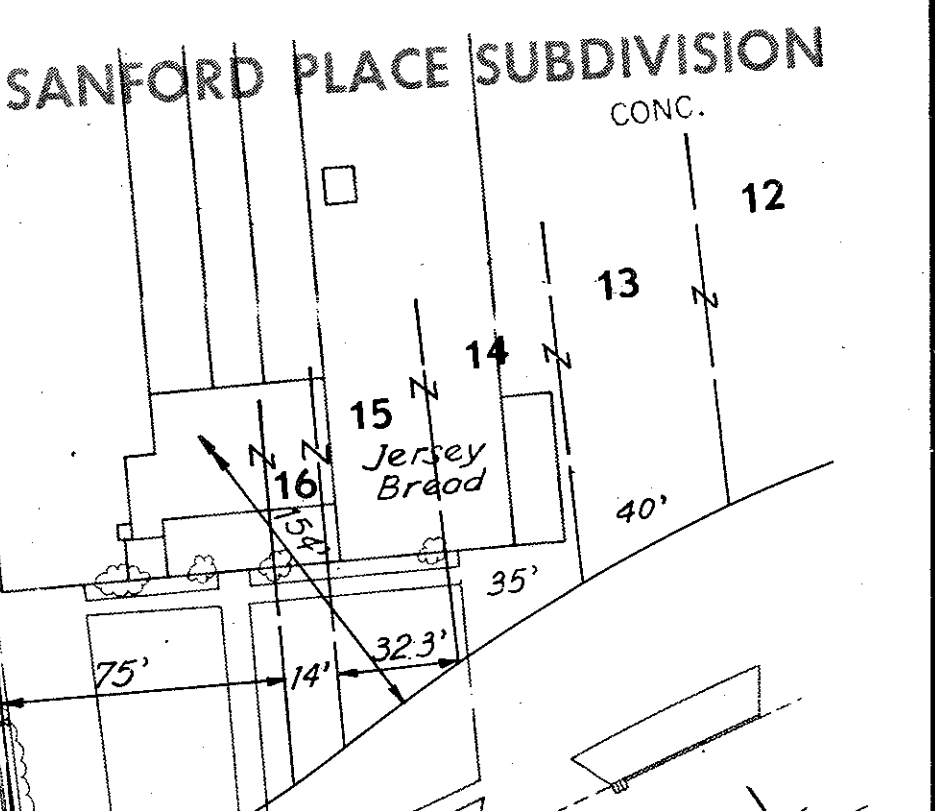
TOWNSHIP 9 SOUTH RANGE 7 EAST



PARCEL	OWNER	AREA
1196D WL	City of Toledo, Willys Park	41.98 Ac.
1196D WL-1	City of Toledo, Willys Park	0.09 Ac.
1196D WL-2	City of Toledo, Willys Park	0.86 Ac.
1196D X-2	City of Toledo, Willys Park	5.23 Ac.
1196D X-3	City of Toledo, Willys Park	0.63 Ac.
* 1198D WD-1	Wilco Properties Inc.	0.28 Ac.
1198 X	Wilco Properties Inc.	0.03 Ac.
* 1198 WA	Wilco Properties Inc.	0.06 Ac.
2012 WL	Logan, Elsie	1.18 Ac.
2013 WL	Metromedia Inc.	10,204
2014 WL	Kemberling, Joanne H.	17,100
2015 WL	Ashland Oil and Refining Co.	0.87 Ac.
2016 WD	Stebbins, Harry W. and Hilda W.	25,985
2017 WL	The Mather Spring Company	1.30 Ac.
2017 WL-1	The Mather Spring Company	0.10 Ac.
2017 WD	The Mather Spring Company	0.15 Ac.
2017 X	The Mather Spring Company	0.47 Ac.
2018 S	City of Toledo, Collingwood Cemetery	0.12 Ac.
2018 T	City of Toledo, Collingwood Cemetery	0.42 Ac.
2019 WL	Weiser, Jean	0.25 Ac.
2019 X	Weiser, Jean	0.18 Ac.
2019 T	Weiser, Jean	1.10 Ac.
2019 T-1	Weiser, Jean	0.20 Ac.
2023 WL	Hagen, Gerald and Barbara	0.12 Ac.
2023 WD	Hagen, Gerald and Barbara	0.19 Ac.
2023 X	Hagen, Gerald and Barbara	0.44 Ac.
* 2023 S	Hagen, Gerald and Barbara	0.08 Ac.
2023 T	Hagen, Gerald and Barbara	0.90 Ac.
* 2024A WD	Tillotson Manufacturing Co.	0.06 Ac.
2024A T	Tillotson Manufacturing Co.	0.21 Ac.

FED. RD. DIVISION 2 STATE OHIO PROJECT 175-6(4)

LUCAS COUNTY CITY OF TOLEDO TOLEDO EXPRESSWAY SYSTEM EXPRESSWAY - PART 30 LUC 75-5.46 RIGHT OF WAY PLAN STATE JOB NO. 02397(0)



CURVE DATA
CURVE NO. 15
 R = 175.00'
 L = 75.64'
 T = 38.42'
 Δ = 24°45'55"
 Chord = 75.05'
 NB5°22'57"E

CURVE NO. 16
 R = 150.00'
 L = 98.10'
 T = 50.88'
 Δ = 37°28'25"
 Chord = 96.37'
 NB79°01'42"E

CURVE DATA
CURVE NO. 14
 R = 924.84'
 L = 100.00'
 Δ = 06°17'43"
 Chord = 99.95'
 N67°40'29"E

CURVE DATA
CURVE NO. 17
 R = 338.00'
 L = 165.86'
 Δ = 28°06'53"
 Chord = 164.20'
 N64°51'38"E

* 100% CITY FUNDS
 I TYPE FUNDS

SCALE 1" = 50'
 MADE REK DATE 1-69
 TRCD REK DATE 1-69
 CKD JDE DATE 10-69

HOWARD, NEEDLES, TAMMEN & BERGENOFF
 CONSULTING ENGINEERS
 KANSAS CITY CLEVELAND NEW YORK

ASPH. NOTE:
 All monuments shown on these plans (□) have been located and tied by field surveys to the traverse system.

NO.	REVISION	DATE	BY
5	Add I Funds and Area - Par 2017WD	5-1-70	F.T.H.
4	2017-5 ET Included in 2017WL	3-21-70	F.T.H.
3	Chg. Par. 2017WD-1 to 2017WD	3-11-70	F.T.H.
2	Par. 1196D WL Area CH.	3-5-70	F.T.H.
1	LA Line on Parcel No. 2017	11-17-69	LCE's

TOWNSHIP 9 SOUTH RANGE 7 EAST

STATE JOB NO. 02397(0)

FED. RD. DIVISION	STATE	PROJECT
2	OHIO	1-75-6(4)

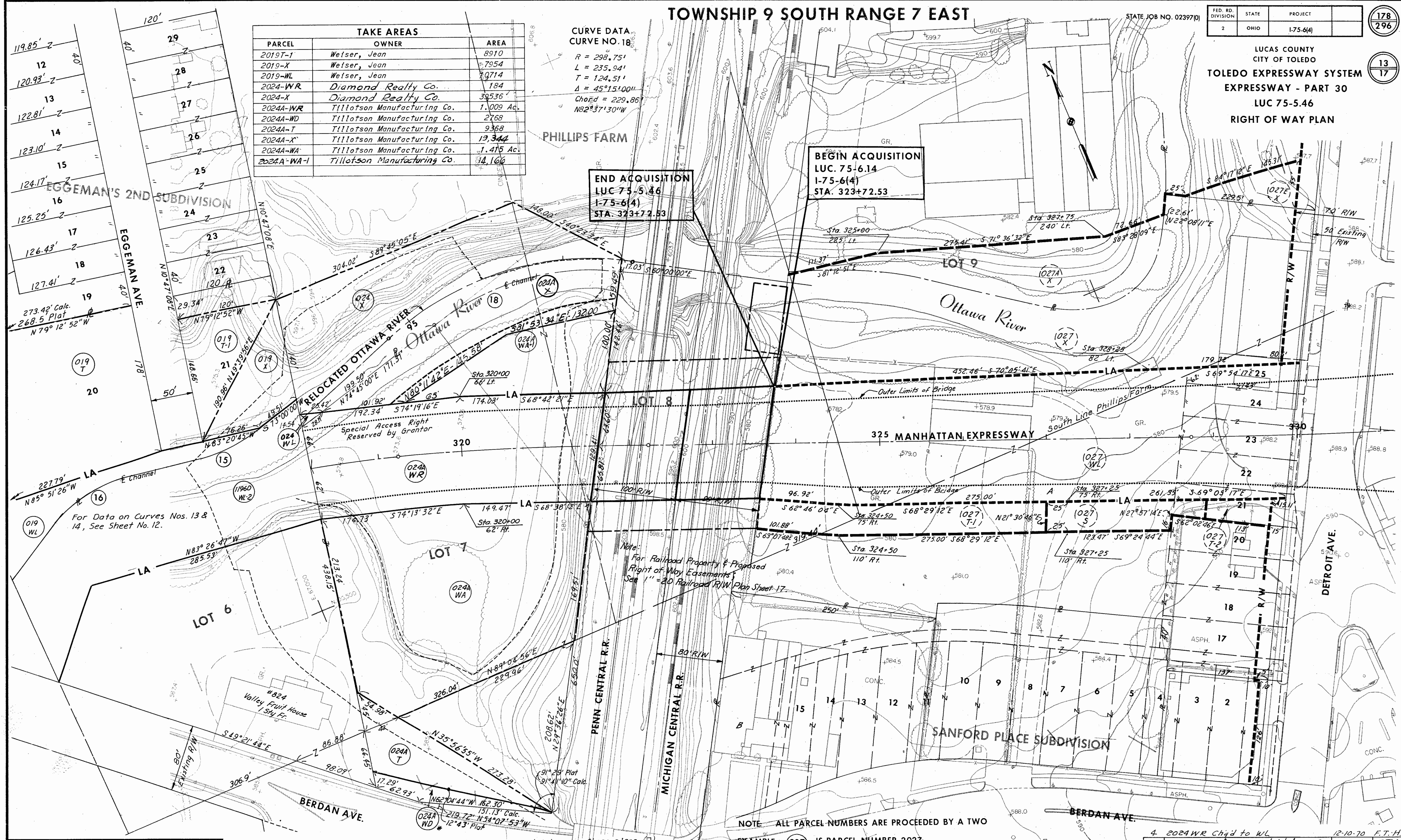
178
296

LUCAS COUNTY
CITY OF TOLEDO
TOLEDO EXPRESSWAY SYSTEM
EXPRESSWAY - PART 30
LUC 75-5.46
RIGHT OF WAY PLAN

13
17

PARCEL	OWNER	AREA
2019T-1	Weiser, Jean	8910
2019-X	Weiser, Jean	7954
2019-WL	Weiser, Jean	79714
2024-WR	Diamond Realty Co.	184
2024-X	Diamond Realty Co.	39536
2024A-WR	Tillotson Manufacturing Co.	1.009 Ac.
2024A-WD	Tillotson Manufacturing Co.	2768
2024A-T	Tillotson Manufacturing Co.	9368
2024A-X	Tillotson Manufacturing Co.	19,344
2024A-WA	Tillotson Manufacturing Co.	1.415 Ac.
2024A-WA-1	Tillotson Manufacturing Co.	14,160

CURVE DATA
CURVE NO. 18
R = 298.75'
L = 235.94'
T = 124.51'
Δ = 45°15'00"
Chord = 229.86'
NB2°37'30"W



END ACQUISITION
LUC 75-5.46
1-75-6(4)
STA. 323+72.53

BEGIN ACQUISITION
LUC 75-6.14
1-75-6(4)
STA. 323+72.53

Note:
For Railroad Property & Proposed
Right of Way Easements
See 1" = 20' Railroad R/W Plan Sheet 17.

NOTE: ALL PARCEL NUMBERS ARE PRECEDED BY A TWO

EXAMPLE: (027) IS PARCEL NUMBER 2027

SCALE 1" = 50'
HOWARD, NEEDLES, TAMMEN & BERGENDOFF
CONSULTING ENGINEERS
MADE REK DATE 1-69
TRCD REK DATE 1-69
CKD JDE DATE 10-69
KANSAS CITY CLEVELAND NEW YORK

NOTE: All monuments shown on these plans (□) have been located and tied by field surveys to the traverse system.

4	2024WR Chgd to WL	12-10-70	F.T.H.
3	WL on 2024 & 2024A chgd to WR	5-1-70	F.T.H.
2	2024-WA-1 Added, 2024 Name Change	12-1-69	LCE's
1	General Comments & City Funds	11-17-69	LCE's
NO.	REVISION	DATE	BY

*100% City Funds
I Type Funds

TOWNSHIP 9 SOUTH RANGE 7 EAST

STATE JOB NO. 02397(8)

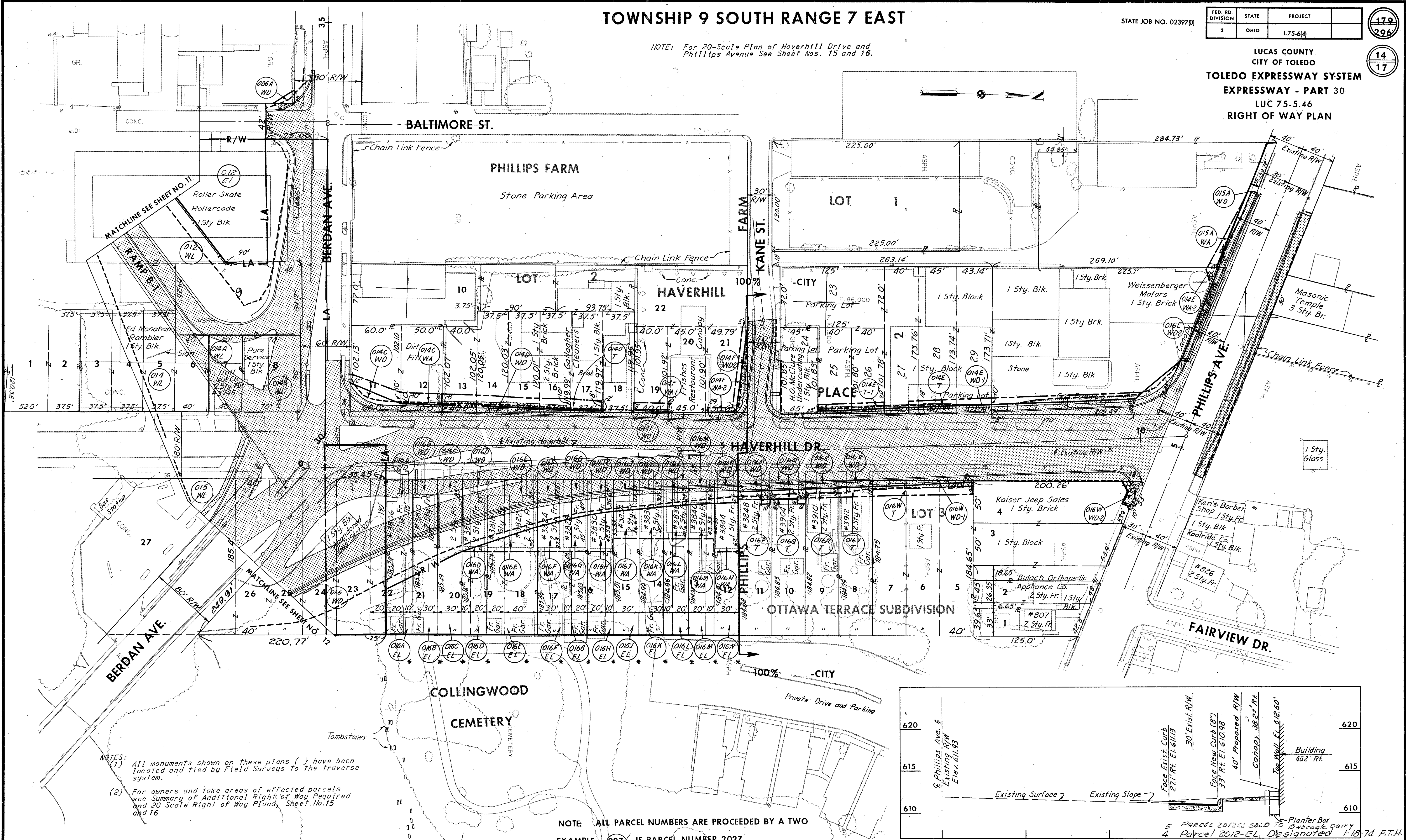
FED. RD. DIVISION	STATE	PROJECT
2	OHIO	1-75-6(4)

179
296

14
17

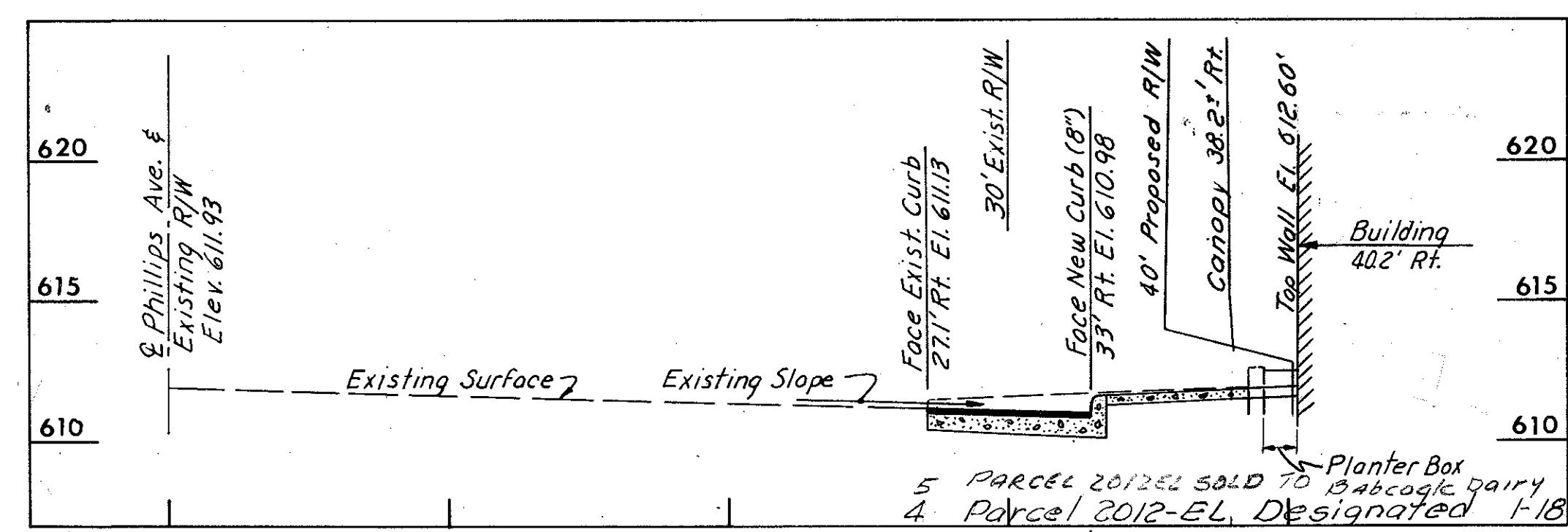
LUCAS COUNTY
CITY OF TOLEDO
TOLEDO EXPRESSWAY SYSTEM
EXPRESSWAY - PART 30
LUC 75-5.46
RIGHT OF WAY PLAN

NOTE: For 20-Scale Plan of Haverhill Drive and Phillips Avenue See Sheet Nos. 15 and 16.



NOTES:
(1) All monuments shown on these plans () have been located and tied by Field Surveys to the Traverse system.
(2) For owners and take areas of effected parcels see Summary of Additional Right of Way Required and 20 Scale Right of Way Plans, Sheet No. 15 and 16

NOTE: ALL PARCEL NUMBERS ARE PROCEEDED BY A TWO
EXAMPLE: 027 IS PARCEL NUMBER 2027



SCALE 1" = 50'
MADE RHP DATE 6-68
TRCD. REK DATE 6-68
CKD. REK DATE 6-68
HOWARD, NEEDLES, TAMMEN & BERGENDOFF
CONSULTING ENGINEERS
KANSAS CITY CLEVELAND NEW YORK

STA. 3+50
PHILLIPS AVE.

* State Funds
1 Type Funds
100% City Funds

3	Added Dimension on Baltimore St.	9-11-70	F.T.H.
2	Par. 2016 WD, Dimensions	9-5-70	F.T.H.
1	LA Lines & State Funds	11-17-69	LCE's
NO.	REVISION	DATE	BY

TOWNSHIP 9 SOUTH RANGE 7 EAST

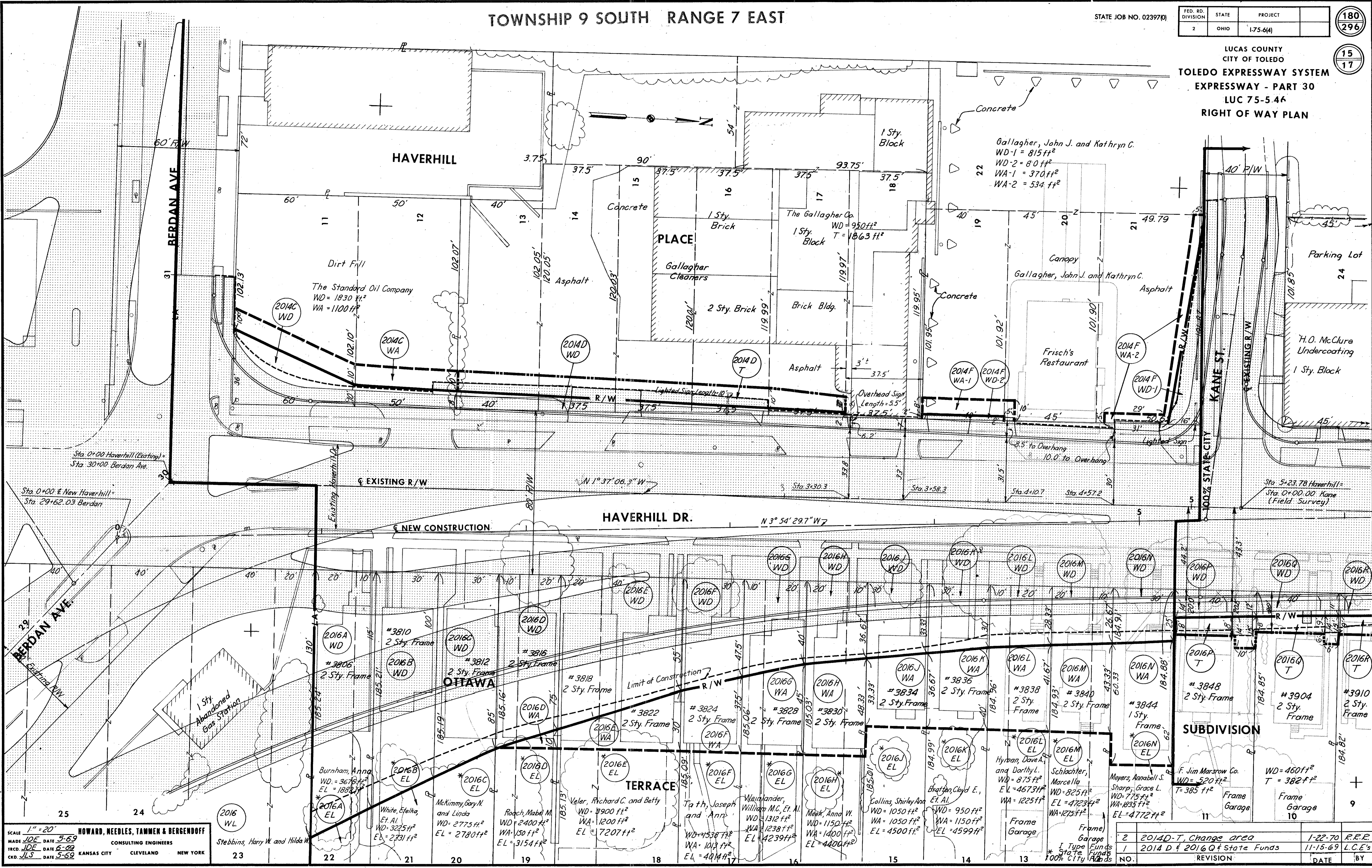
STATE JOB NO. 02397(0)

FED. RD. DIVISION	STATE	PROJECT
2	OHIO	1-75-6(4)

180
296

LUCAS COUNTY
CITY OF TOLEDO
TOLEDO EXPRESSWAY SYSTEM
EXPRESSWAY - PART 30
LUC 75-5.46
RIGHT OF WAY PLAN

15
17



SCALE 1" = 20'
MADE JDE DATE 5-69
TRCD JDE DATE 6-69
CKD JLS DATE 5-69
HOWARD, NEEDLES, TAMMEN & BERGENDOFF
CONSULTING ENGINEERS
KANSAS CITY CLEVELAND NEW YORK

NO.	REVISION	DATE	BY
2	2014D-T, Change area	1-22-70	R.R.E.
1	2014 D & 2016 Q & State Funds	11-15-69	L.C.E.'s

TOWNSHIP 9 SOUTH RANGE 7 EAST

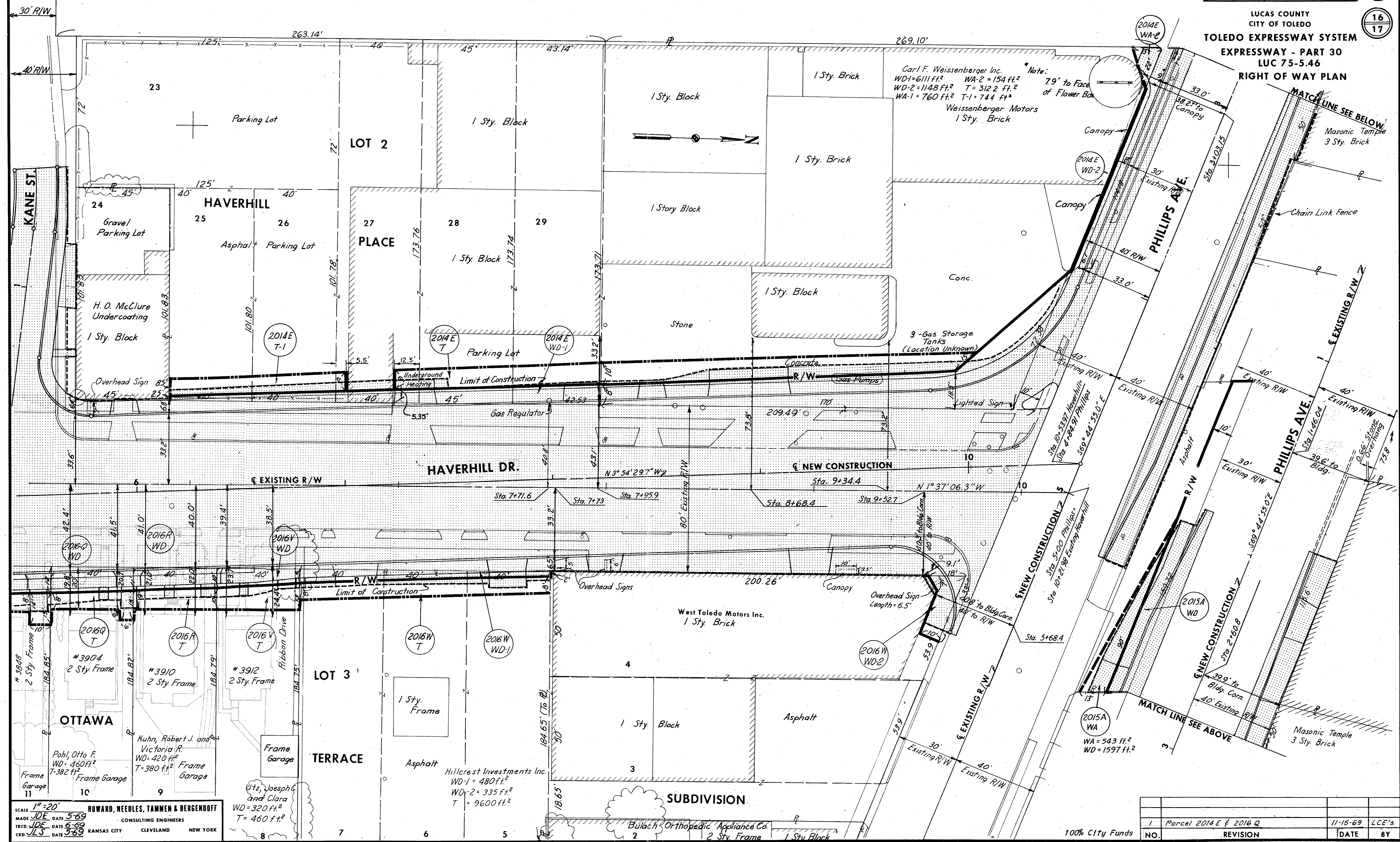
STATE JOB NO. 02397(0)

FED. RD. DIVISION	STATE	PROJECT
2	OHIO	175-6(4)

181
296

16
17

LUCAS COUNTY
CITY OF TOLEDO
TOLEDO EXPRESSWAY SYSTEM
EXPRESSWAY - PART 30
LUC 75-5.46
RIGHT OF WAY PLAN



SCALE 1" = 20'
MADE JDE DATE 5-69
TRCD JDE DATE 6-69
CKD JLS DATE 5-69
HOWARD, NEEDLES, TAMMEN & BERGENDOFF
CONSULTING ENGINEERS
KANSAS CITY CLEVELAND NEW YORK

100% City Funds	NO.	REVISION	DATE	BY
	1	Parcel 2014 E & 2016 Q	11-15-69	LCE's

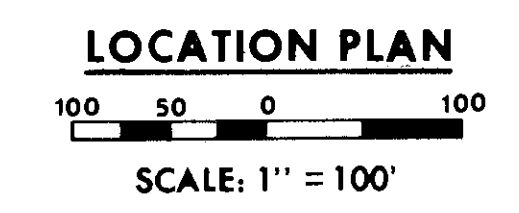
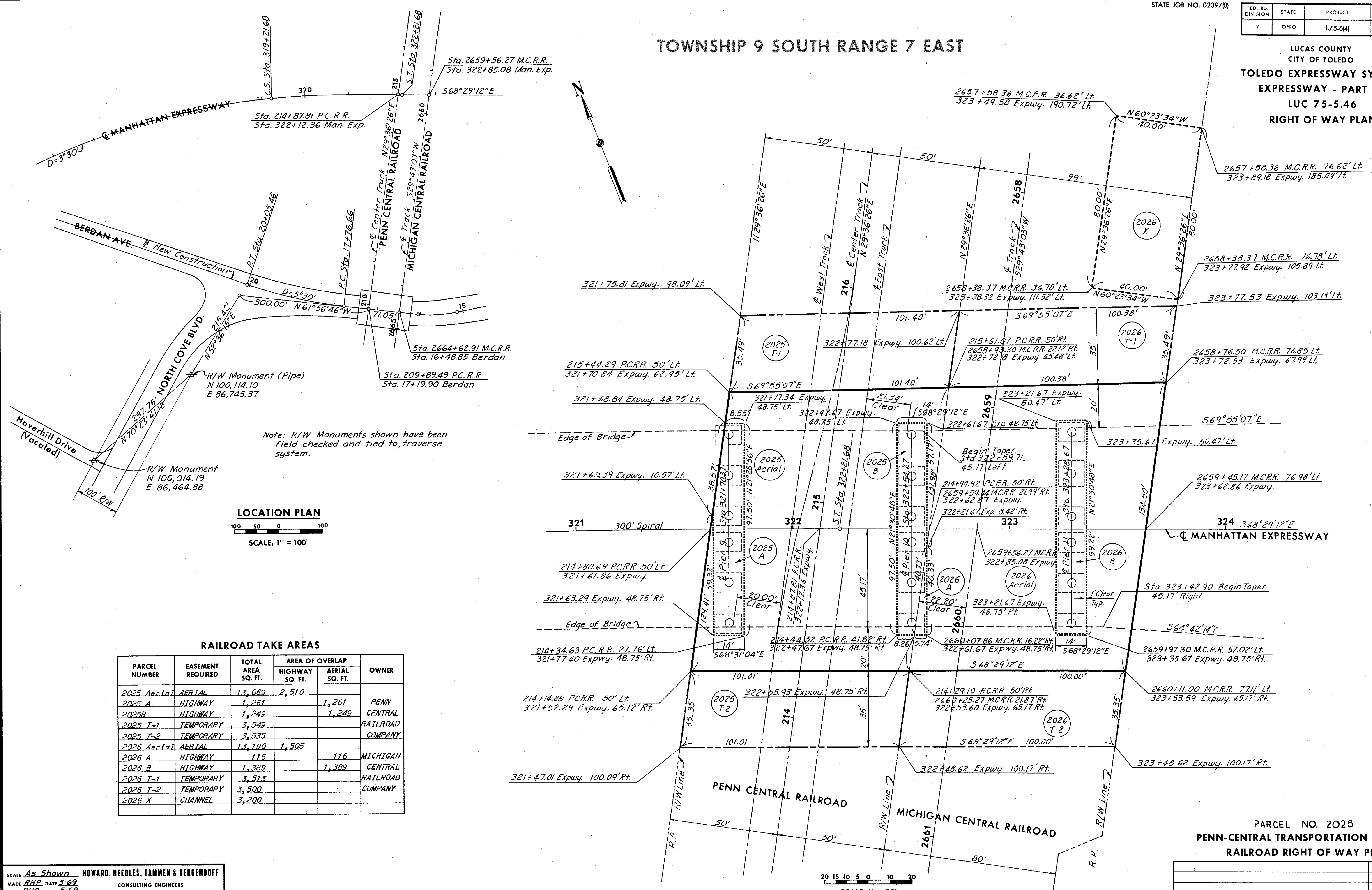
FED. RD. DIVISION	STATE	PROJECT
2	OHIO	1-75-64

182
296

17
17

LUCAS COUNTY
CITY OF TOLEDO
TOLEDO EXPRESSWAY SYSTEM
EXPRESSWAY - PART 30
LUC 75-5.46
RIGHT OF WAY PLAN

TOWNSHIP 9 SOUTH RANGE 7 EAST

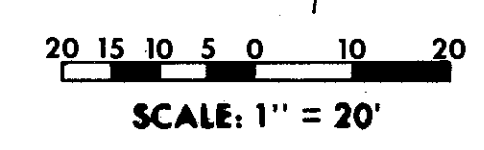


RAILROAD TAKE AREAS

PARCEL NUMBER	EASEMENT REQUIRED	TOTAL AREA SQ. FT.	AREA OF OVERLAP		OWNER
			HIGHWAY SQ. FT.	AERIAL SQ. FT.	
2025 Aerial	AERIAL	13,069	2,510		PENN CENTRAL RAILROAD COMPANY
2025 A	HIGHWAY	1,261		1,261	
2025B	HIGHWAY	1,249		1,249	
2025 T-1	TEMPORARY	3,549			
2025 T-2	TEMPORARY	3,535			
2026 Aerial	AERIAL	13,190	1,505		MICHIGAN CENTRAL RAILROAD COMPANY
2026 A	HIGHWAY	116		116	
2026 B	HIGHWAY	1,389		1,389	
2026 T-1	TEMPORARY	3,513			
2026 T-2	TEMPORARY	3,500			
2026 X	CHANNEL	3,200			

PARCEL NO. 2025
PENN-CENTRAL TRANSPORTATION COMPANY
RAILROAD RIGHT OF WAY PLAT

SCALE As Shown
MADE RHP DATE 2-69
TRCD. RHP DATE 3-69
CKD. JLS DATE 5-69
HOWARD, NEEDLES, TAMMEN & BERGENDOFF
CONSULTING ENGINEERS
KANSAS CITY CLEVELAND NEW YORK



I Type Funds

NO.	REVISION	DATE	BY

Scanned
July
14/17

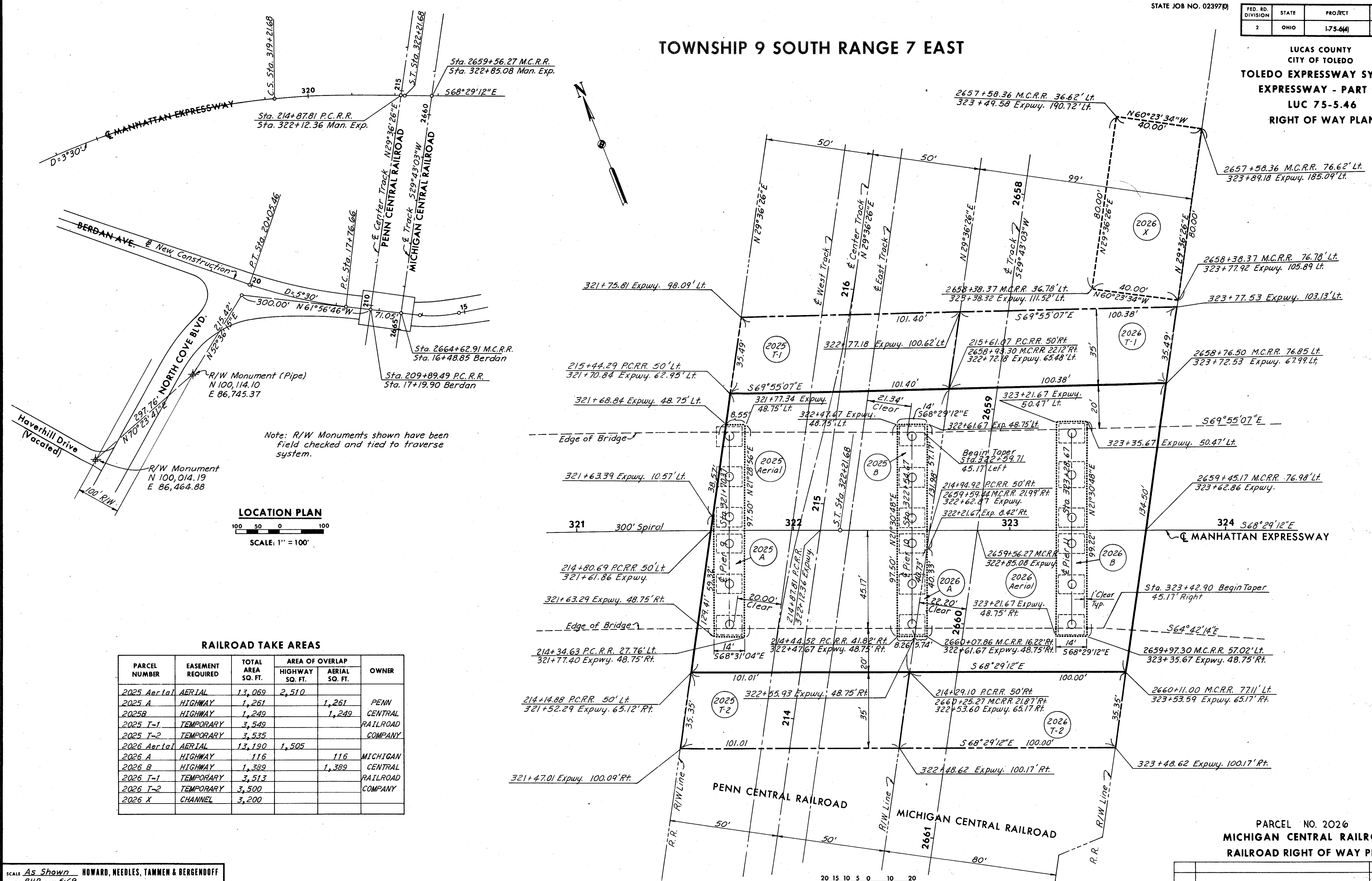
FED. RD. DIVISION	STATE	PROJECT
2	OHIO	I-75-44

182-A
296

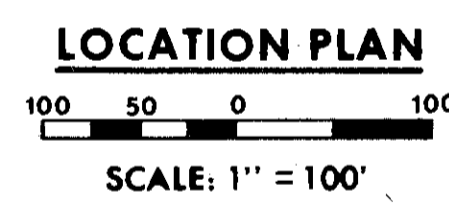
17-A
17

LUCAS COUNTY
CITY OF TOLEDO
TOLEDO EXPRESSWAY SYSTEM
EXPRESSWAY - PART 30
LUC 75-5.46
RIGHT OF WAY PLAN

TOWNSHIP 9 SOUTH RANGE 7 EAST

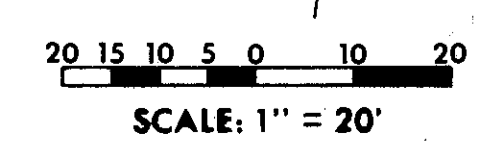


Note: R/W Monuments shown have been field checked and tied to traverse system.



RAILROAD TAKE AREAS

PARCEL NUMBER	EASEMENT REQUIRED	TOTAL AREA SQ. FT.	AREA OF OVERLAP		OWNER
			HIGHWAY SQ. FT.	AERIAL SQ. FT.	
2025 Aerial	AERIAL	13,069	2,510		PENN CENTRAL RAILROAD COMPANY
2025 A	HIGHWAY	1,261		1,261	
2025B	HIGHWAY	1,249		1,249	
2025 T-1	TEMPORARY	3,549			
2025 T-2	TEMPORARY	3,535			
2026 Aerial	AERIAL	13,190	1,505		MICHIGAN CENTRAL RAILROAD COMPANY
2026 A	HIGHWAY	116		116	
2026 B	HIGHWAY	1,389		1,389	
2026 T-1	TEMPORARY	3,513			
2026 T-2	TEMPORARY	3,500			
2026 X	CHANNEL	3,200			



PARCEL NO. 2026
MICHIGAN CENTRAL RAILROAD
RAILROAD RIGHT OF WAY PLAT

SCALE: As Shown
HOWARD, NEEDLES, TAMMEN & BERGENDOFF
MADE RHP DATE 5-69
TRCD. RHP DATE 5-69
CKD. JLS DATE 3-69
CONSULTING ENGINEERS
KANSAS CITY CLEVELAND NEW YORK

NO.	REVISION	DATE	BY

ENC-12-2-46
DESIGNER DR. J. DEBROU AVE.
C-115

I Type Funds