

FED. RD. DIVISION	STATE	FED. AID PROJ. NO.	
2	OHIO	1-75-6(35)	

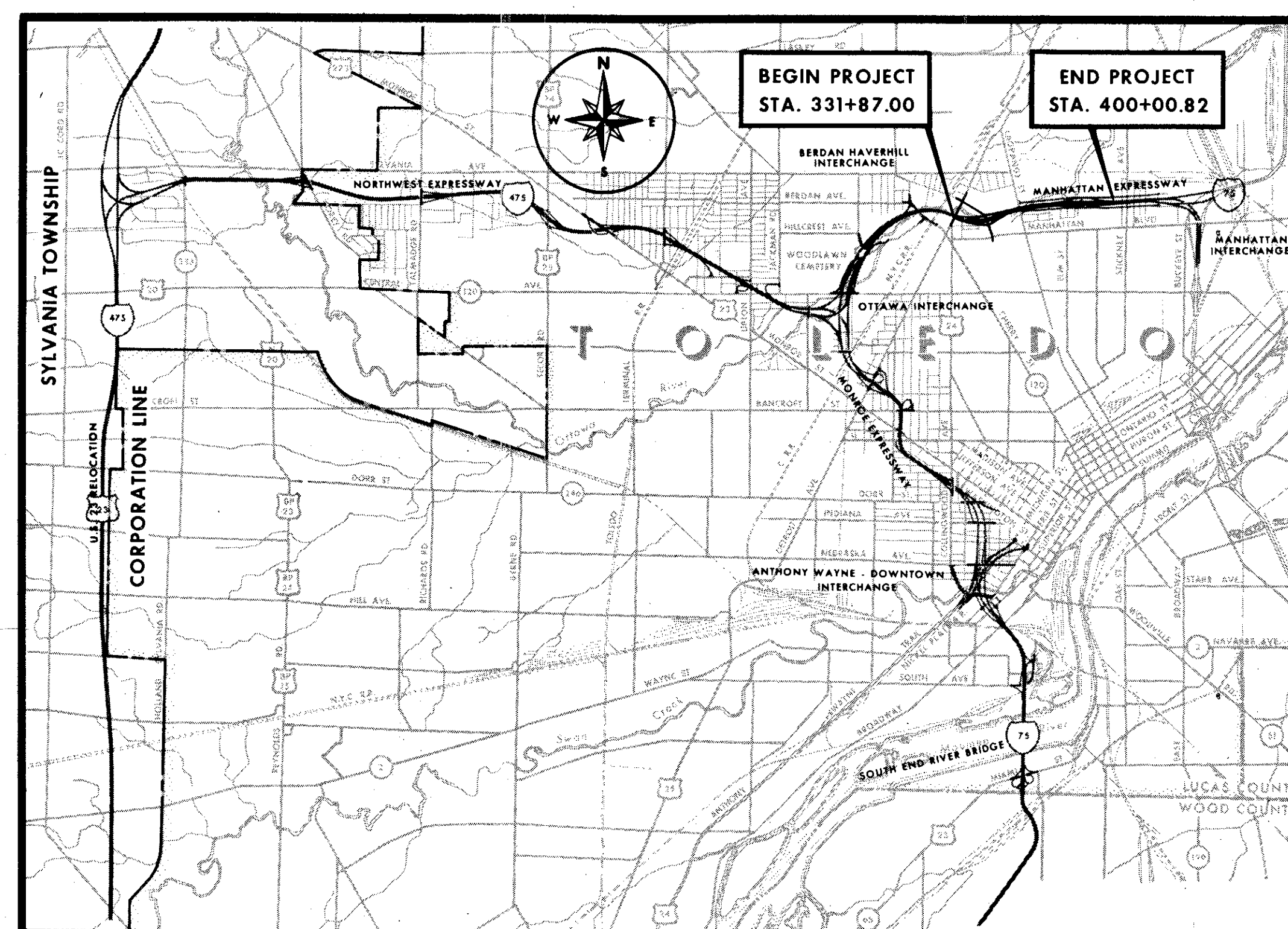
172
288

1
14

LUCAS COUNTY
CITY OF TOLEDO
TOLEDO EXPRESSWAY SYSTEM
EXPRESSWAY - PART 26
LUC 75-6.14
RIGHT OF WAY
LIMITED ACCESS HIGHWAY
LUC-75-3.35 R/W ONLY

STATE OF OHIO
DEPARTMENT OF HIGHWAYS
LUC 75-6.14
LUCAS COUNTY
CITY OF TOLEDO
TOLEDO EXPRESSWAY SYSTEM - PART 26
MANHATTAN EXPRESSWAY
DETROIT AVE. TO STICKNEY AVE.

I- 75- 6 (4)
RIGHT OF WAY ONLY



LEGEND

- Z --- LOT LINES
- P/L --- PROPERTY LINES
- (260A WL) PARCEL NUMBER
- --- LIMIT OF CONSTRUCTION
- LA --- RIGHT OF WAY WITH LIMITED ACCESS
- R/W --- RIGHT OF WAY WITHOUT LIMITED ACCESS
- --- TEMPORARY RIGHT OF WAY
- --- WORK AGREEMENT

THIS IMPROVEMENT IS ESPECIALLY DESIGNED FOR THROUGH TRAFFIC AND HAS BEEN DECLARED A LIMITED ACCESS HIGHWAY OR FREEWAY BY ACTION OF THE DIRECTOR OF HIGHWAYS IN ACCORDANCE WITH THE PROVISIONS OF SECTION 5511.02 OF THE REVISED CODE OF OHIO.

THE STANDARD SPECIFICATIONS OF THE STATE OF OHIO DEPARTMENT OF HIGHWAYS, INCLUDING CHANGES AND SUPPLEMENTAL SPECIFICATIONS LISTED IN THE PROPOSAL SHALL GOVERN THIS IMPROVEMENT.

THE RIGHT OF WAY FOR THIS IMPROVEMENT WILL BE PROVIDED BY THE STATE.

I HEREBY APPROVE THESE PLANS AND DECLARE THAT THE MAKING OF THIS IMPROVEMENT WILL NOT REQUIRE THE CLOSING TO TRAFFIC OF THE HIGHWAY AND THAT PROVISIONS FOR THE MAINTENANCE AND SAFETY OF THE TRAFFIC WILL BE AS SET FORTH IN THE PLANS AND ESTIMATE.

APPROVED _____
DATE _____ DEPUTY DIRECTOR OF RIGHT OF WAY

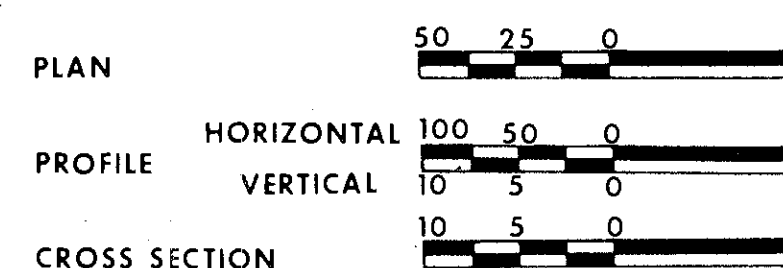
APPROVED _____
DATE _____ DIRECTOR OF HIGHWAYS

LOCATION MAP



PORTION TO BE IMPROVED _____

OTHER SCALES - FEET



PREPARED AND RECOMMENDED BY
HOWARD, NEEDLES, TAMMEN & BERGENDOFF
CONSULTING ENGINEERS
KANSAS CITY CLEVELAND NEW YORK

DEPARTMENT OF TRANSPORTATION
FEDERAL HIGHWAY ADMINISTRATION
BUREAU OF PUBLIC ROADS

APPROVED: _____

DIVISION ENGINEER

DATE

FILE NO.	LUCAS COUNTY
	SEC. LUC 75-6.14 PART 26
	DATE OF LETTING _____ 196__
	CONTRACT NO. _____

R-3075B #5 C-113

SUMMARY OF ADDITIONAL RIGHT OF WAY REQUIRED

TOTAL NO. OF OWNERS 40
 TOTAL NO. OF STRUCTURES 25

PARCEL NO.	OWNER	TYPE FUND	RECORDED		DEED AREA	TOTAL P.R.O.	TOTAL TAKE	P.R.O. IN TAKE	NET TAKE		NET RESIDUE		SHEET NO.	REMARKS
			BOOK	PAGE					LAND	BLDG.	LEFT	RIGHT		
2026 X	Michigan Central Railroad	I	See Remarks			0	3,200			No			5	Vol. 23, P. 541; Vol. 168, P. 276; Vol. 96, P. 489; Vol. 154, P. 157
2026B WD	The Newbridge Corp	I-C	1539	223	6084	0	1823			Yes*	4261		6-12	* One Sty. Block Bldg. Interstate Part., City Part. Land & Damages
2026B T	The Newbridge Corp	I	1539	223	6084	0	1,209						6	Grading and Sidewalk Rebuilding
2026C WD	Rohr, Pauline V.	I-C	1938	672	6798	0	825			Yes*	5973		6-12	* Two Sty. Brick Bldg. Interstate Part., City Part. Land & Damages
2026C T	Rohr, Pauline V.	I	1938	672	6798	0	1,716						6	Grading & Building Removal
2026D WD	Socony-Vacuum Oil Co.	100% City	879	493	13,596	0	660			No	12,936		6	
2026D T	Socony-Vacuum Oil Co.	100% City	879	493	13,596	0	2640						6	Grading & Resurfacing
2027 WL	O.L. Mears Inc.	I	1307	386	7,47Ac.	0	2,201Ac.			Yes*			5	* Two Sty. Brick Bldg., 2-One Sty. Metal Quonsets, Brick Storage Bldg.
2027 WD-1	O.L. Mears Inc.	I	1298	419	7,47Ac.	0	0,080Ac.						5	
2027 WD-2	O.L. Mears Inc.	*	1255	13	7,47Ac.	0	0,076Ac.						5	* 75% State - 25% City
** 2027 WD-3	O.L. Mears Inc.	I			7,47Ac.	0	1,734Ac.						5	
2027-EL	O.L. Mears Inc.	I			7,47Ac.	0	3,379Ac.						5	
2027A WD	The Toledo Pressed Steel Co.	100% City	1313	293	7,354 Ac.	0.359 Ac.	0,880 Ac.	0.359 Ac.	0.521Ac.	Yes*	6.474 Ac.		6	* 2-One Sty. Brick Bldgs.
* 2027A X	The Toledo Pressed Steel Co.	I	1313	293	7,354 Ac.	0	0,536Ac.						6	
2027A WA-1	The Toledo Pressed Steel Co.	I	1313	293	7,354 Ac.	0	0,408Ac.						6	Fill Existing Channel
2027A WA-2	The Toledo Pressed Steel Co.	100% City	1313	293	7,354 Ac.	0	0,408Ac.						6	To Remove Building, Driveway Rebuilding, Grading
2027B WD	Holben, Fern E., & King, James H. & Roberta	100% City	1919	757	0,431Ac.	0	0,186 Ac.			Yes*	0,245Ac.		6	* Two Sty. Frame Bldg., One Sty. Frame Garage
2027B T	Holben, Fern E., & King, James H. & Roberta	100% City	1033	120	0,431Ac.	0	0,245 Ac.						6	Temporary Road
2027C WD	Burke, Edmond E.	I	1553	216	5141	0	5141			Yes*			6	* One Sty. Brick Bldg.
2027D WD	The Ohio Oil Co.	I	1510, 1400	527, 175	1,181 Ac.	0,145 Ac.	1,036 Ac.	0,145 Ac.	1,036Ac.	Yes*			6	* One Sty. Block Bldg.
2027E WD	Kinney, Warren H.	I	1400	51	1,768 Ac.	0,404 Ac.	0,566Ac.	0,404 Ac.	0,162Ac.		1,202Ac.		5 & 6	
2027E X	Kinney, Warren H.	I	1400	51	1,768 Ac.	0	0,085Ac.						5	
2027E S	Kinney, Warren H.	I	1400	51	1,768 Ac.	0	0,253Ac.						5	
2027E T	Kinney, Warren H.	I	1400	51	1,768 Ac.	0	0,603Ac.			Yes*			5	Temporary Road * Two Sty. Block Bldg.
2027E WA	Kinney, Warren H.	I	1400	51	1,768 Ac.	0	0,255Ac.						5	Fill Existing Channel
2028 WL	White Hut System Inc.	I	1681	240	20,200	0	12,769			Yes*			5	* One Sty. Block Bldg. & Two Story Block Bldg.
2028 WD	White Hut System Inc.	*	1665	558	20,200	0	400						5	* 75% State - 25% City
2028-EL	White Hut System Inc.	*			20,200	0	7031						5	Temporary Road * 75% State - 25% City
2028A WD	Valassis, George N.	*	1694	522	15,120	0	1134			No	13,986		5	* 75% State - 25% City
2028A WA	Valassis, George N.	*	1158	208	15,120	0	983						5	Driveway Rebuilding * 75% State - 25% City
2028B WL	The Standard Oil Co.	*	See Remarks		20,697	5344	9816	5344	4472	No	10,881		5	* 75% State - 25% City Vol. 819, Pg. 149 & 145; Vol. 1044, Pg. 78
2028C WD	The Muffler King Co. Profit Sharing Plan & Trust	*	1939	593	2590	0	82			No	2508		5	* 75% State - 25% City
2028D T	The Muffler King Co.	*	1978	48	9600	0	2000			No	9600		5	* 75% State - 25% City
2028E WD	The Sumarc Corp	*	1847	151	3400	0	400						5	* 75% State - 25% City
2028E-EL	The Sumarc Corp	**	1847	151	3400	0	3000			Yes*			5	* One Sty. Blk Bldg., ** 75% State - 25% City
2029 WL	S.F. Company	I	1655	474	4290	0	4290			Yes*			5	* Two Sty. Block Bldg.
2030 WL	Byersmith, Agnes J.	I	653	446	4860	0	4860			No			5	
2031 WL	Marleau, Chester J. Jr. & Dorothy	I	1640	267	16,000	0	16,000			Yes*			5	* One Sty. Block Bldg.
2032 WL	Marleau, Chester J. Jr. & Dorothy	I	1640	267	3,485	0	3,485			No			5	
2032A WD-1	Marleau, Bertrand C.	I	1640	267	3,286Ac.	0	0,153 Ac.			Yes*	2,684Ac.		5	* One Sty. Block Bldg., Two Sty. Frame Bldg. &
2032A WD-2	Marleau, Bertrand C.	I	1640	267	3,286 Ac.	0	0,141 Ac.						6	One Story Frame Bldg.
2032A WD-3	Marleau, Bertrand C.	I	1640	267	3,286 Ac.	0	0,354Ac.						7	Parcels 2032B and 2032C Combined with 2032A
2032A X-1	Marleau, Bertrand C.	I	1640	267	3,286 Ac.	0	0,308Ac.						5	
2032A X-2	Marleau, Bertrand C.	I	1640	267	3,286 Ac.	0	1,313Ac.			Yes*			5	* Metal Shed, Metal Shed - One Sty. Block Bldg.
2032A S	Marleau, Bertrand C.	I	1640	267	3,286 Ac.	0	0,016 Ac.						5	
2032A SL	Marleau, Bertrand C.	I	1640	267	3,286 Ac.	0	0,465 Ac.						5	Grading
2032A WA-1	Marleau, Bertrand C.	I	1640	267	3,286 Ac.	0	0,097 Ac.			Yes*			5	To Remove Building * Two Story Block Bldg.
2032A WA-2	Marleau, Bertrand C.	I	1640	267	3,286 Ac.	0	0,014 Ac.						5	To Remove Building
2032A WA-3	Marleau, Bertrand C.	I	1640	267	3,286 Ac.	0	0,014 Ac.						5	To Remove Building
													6	
													7	
													7	
													6	
2033 WL	D.J. Marleau Co.	I	1886	359	2535	0	2535			Yes*			5	* 1 1/2 Sty. Frame Bldg., Frame Garage
2034 WL	Martinac, Anna Katherine	I	1180	286	3200	0	3200			Yes*			5	* 1 1/2 Sty. Frame Bldg., Frame Garage
2035 WL	Troyer, Hazel	I	986	223	3631	0	3631			Yes*			5	* 1 1/2 Sty. Frame Bldg., Frame Garage
2036 WL	Smith, Fred	I	691	464	3450	0	3450			Yes*			5	* 1 1/2 Sty. Frame Bldg., Frame Garage
2037 WL	Van Dusen, Harold J. & Estella M.	I	691	109	3565	0	3565			Yes*			5	* 1 1/2 Sty. Frame Bldg., Frame Garage
2037A WL	Greenwood, James E. & Mary E.	I	1242	170	3565	0	3565			Yes*			5	* 1 1/2 Sty. Frame Bldg., Frame Garage
2037B WL	Hinton, Robert C. & Opal M.	I	1794	590	3565	0	3565			Yes*			5	* 1 1/2 Sty. Frame Bldg., Frame Garage
2037C WL	Chumbley, J. Donald	I	1453	287	3067	0	3067			Yes*			5	* Two Sty. Frame Bldg., Frame Garage
2037D WL	Kinne, Ella F.	I	1698	107	3067	0	3067			Yes*			5	* Two Sty. Frame Bldg.
2037E WL	Miller, Jane	I	1411	456	3067	0	3067			Yes*			5	* Two Sty. Frame Bldg.
2037F WL	Miller, Charles E. & Janet K.	I	1860	107	3335	0	3335			Yes*			5	* 1 1/2 Sty. Frame Bldg., Frame Garage
** 2027A-3A-1	The Toledo Pressed Steel Co.	100% City	1313	293	7,354	0							6	To cap sprinkler system by others
** 2027-T-1	O.L. Mears, Inc.	I				0	0,281Ac.						5	
** 2027-T-2	O.L. Mears, Inc.	*				0	0,075Ac.						5	
** 2027-5	O.L. Mears, Inc.	I				0	0,136 Ac.						5	
		I				0	1,734 Ac.						5	

I-75-6(4)

F.T.H.	Funding Chgd on 2027EL & 2027-T2	12-18-70
F.T.H.	2032 C Comb. with 2032A	12-10-70
C.W.B.	Par 2028 & 2028E changed to EL	11-17-70
F.T.H.	Par 2027 T-1 T-2 S.X Added	10-6-70
F.T.H.	Par 2027A-3A-1 Added	9-9-70
F.T.H.	Cor. 2028D Owner change	5-13-70
F.T.H.	Par 2027 Corrected	4-3-70
F.T.H.	Par. 2028C-WD Change Take Area	3-19-70
RRR	Par 2027 E WD Change data	12-10-69
LCE'S	Par. 2027A-X, 2028D-T Funding Change	11-28-69
REK	F. & O.C. Review	3-3-69
REK	Final Comments	4-17-69
REK	Additional Comments	4-6-69
LCE's	Parcel 2028A & 2032A	6-2-69
LCE's	Parcel 2027-S Added	9-6-69
LCE's	Federal # & # of Parcels	9-6-69
C.W.B.	Funding Change 2026BWD-2026CWD	10-2-69

SCALE NONE
 MADE REK DATE 4-69
 TRCD DATE
 CRD RHL DATE 5-69

HOWARD, NEEDLES, TAMMEN & BERGENDOFF
 CONSULTING ENGINEERS
 KANSAS CITY CLEVELAND NEW YORK

By	Description	Date
	REVISIONS	

* Note: Areas are in sq.ft. unless indicated in acres (Ac.)

FED. RD. DIVISION	STATE	PROJECT
2	OHIO	

174
288

3
14

LUCAS COUNTY
CITY OF TOLEDO
TOLEDO EXPRESSWAY SYSTEM
EXPRESSWAY - PART 26
LUC 75-6.14

SUMMARY OF ADDITIONAL RIGHT OF WAY REQUIRED

TOTAL NO. OF OWNERS 40
TOTAL NO. OF STRUCTURES 25

I-75-6(4)
I-75-6(5)
I-75-6(4)
I-75-6(5)
I-75-6(4)

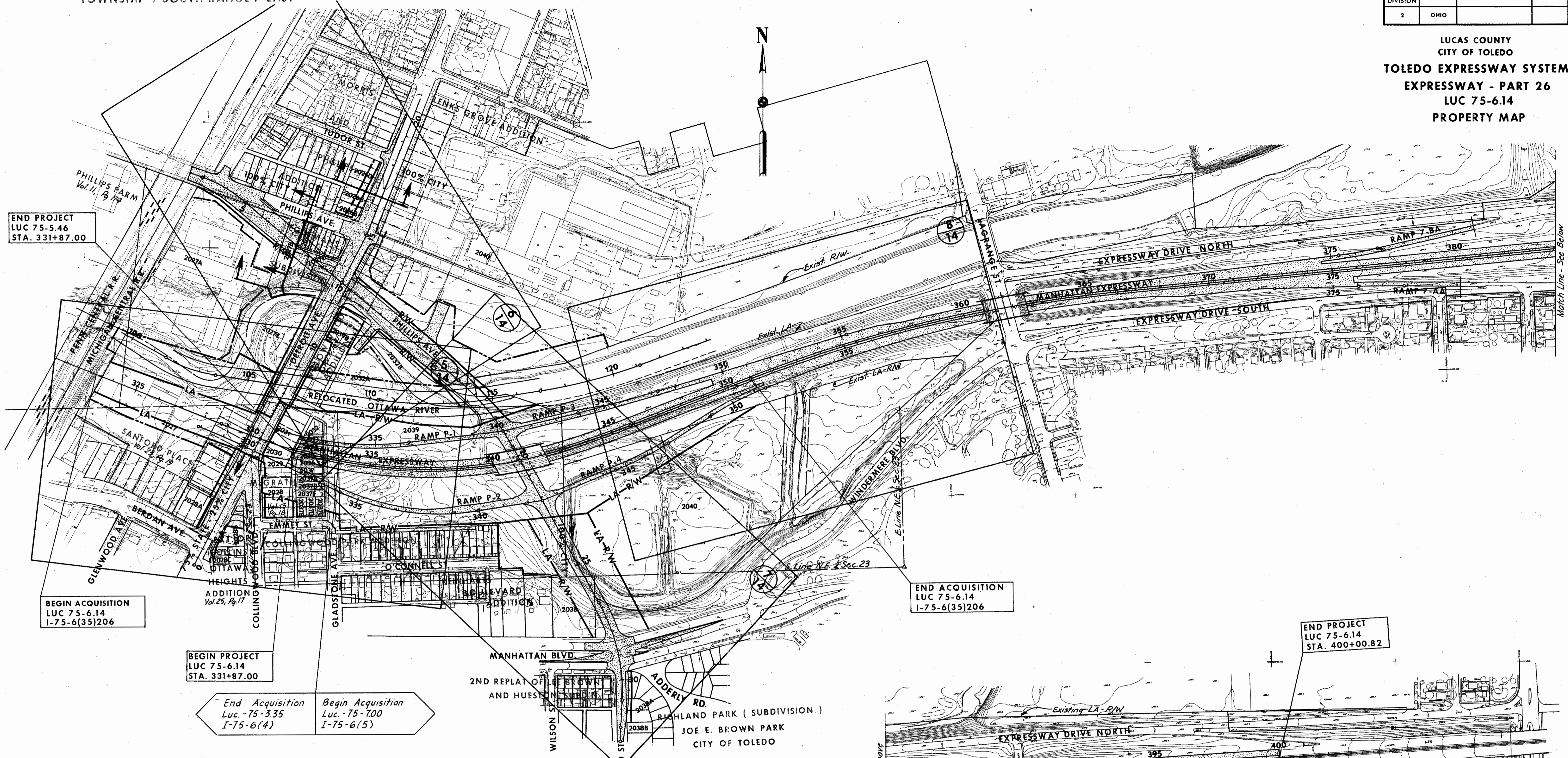
PARCEL NO.	OWNER	TYPE FUND	RECORDED		DEED AREA	TOTAL P.R.O.	TOTAL TAKE	P.R.O. IN TAKE	NET TAKE		NET RESIDUE		SHEET NO.	REMARKS
			BOOK	PAGE					LAND	BLDG.	LEFT	RIGHT		
2038 WL	City of Toledo	100%City			1.0 Ac.	0	0.880Ac.		No		1.72Ac.	7		
2038A WD	City of Toledo - Joe E. Brown Park	100%City	1259	507	17.97Ac.	0	0.093Ac.		No		17.88Ac.	7		
2038B T	Ross, Irene Et. Al.	100%City	See Remarks		4000	0	320		No		4000	7	Driveway and Sidewalk Rebuilding Vol. 948, Pg. 122 & 123 Vol. 1, 1862, Pg. 646	
2039 WL-1	Schminck, Ruth B., Ward, Jane B. f Ohio Citizens Trust Co. Trustee	I			11.19Ac.	0	9.113Ac.		No			5		
2039 WL-2	Schminck, Ruth B., Ward, Jane B. f Ohio Citizens Trust Co. Trustee	100%City	583	53	11.19Ac.		0.537Ac.					7		
2039 WD	Schminck, Ruth B., Ward, Jane B. f Ohio Citizens Trust Co. Trustee	I	722	428	11.19Ac.		0.229Ac.					5		
2039 EL	Schminck, Ruth B., Ward, Jane B. f Ohio Citizens Trust Co. Trustee	S	1896	433	11.19Ac.		0.816Ac.					7		
2039 X	Schminck, Ruth B., Ward Jane B. f Ohio Citizens Trust Co Trustee	I			11.19Ac.		0.495Ac.					5		
2039B WD	A.B.C.D. Realty Co. Inc.	I	809	281	15,053	0	1044		No	10,245		6		
2039B T	A.B.C.D. Realty Co. Inc.	I	809	281	15,053		2545					6	Grading	
2040 WL-1	The DeVilbiss Co.	I	542	127	67.71Ac.	0.366 Ac.	2,315Ac.		No	49.54 Ac.	12.95Ac.	7		
2040 WL-2	The DeVilbiss Co.	100%City	567	588 & 589	67.71 Ac.		1,206Ac.					7		
2040 WD-1	The DeVilbiss Co.	I	586	477	67.71 Ac.		1,698Ac.	0.061Ac.	1.637 Ac.			6		
2040 S	The DeVilbiss Co.	I	596	114	67.71 Ac.		0,595Ac.					6		
2040 T-1	The DeVilbiss Co.	I	597	33	67.71 Ac.		0,454Ac.					6	Grading and Driveway Building	
2040 T-2	The DeVilbiss Co.	I			67.71 Ac.		0,264Ac.					6	Grading	
2040 T-3	The DeVilbiss Co.	I			67.71 Ac.		0,707Ac.					7	Grading	
2038C-WL	City of Toledo	100%City					0.418 Ac.	0.418 Ac.				7	Existing Manhattan Blvd. R/W	
2039B-SL	A.B.C.D. Realty Co. Inc.	I					3764					6		

Note: Areas are in sq. ft. unless indicated in Acres (Ac.)

SCALE NONE HOWARD, NEEDLES, TAMMEN & BERGENOFF
MADE REK DATE 4-69 CONSULTING ENGINEERS
TRCD. DATE
CKD. RHL DATE 5-69 KANSAS CITY CLEVELAND NEW YORK

By	Description	Date
REK	F. & O.C. Review	3-3-69
REK	Final Comments	4-17-69
REK	Additional Comments	4-69
LCE's	2038 & 2038C	7-14-69
LCE's	Federal # & 2039B-SL	9-69
LCE's	2027 Made Full Take	2-9-70
F.T.H.	Added Remark Per 2027EL	3-24-70
F.T.H.	Removed Per 2027EL, WD-3	4-2-70
REVISIONS		

LUCAS COUNTY
CITY OF TOLEDO
TOLEDO EXPRESSWAY SYSTEM
EXPRESSWAY - PART 26
LUC 75-6.14
PROPERTY MAP



END PROJECT
LUC 75-5.46
STA. 331+87.00

BEGIN ACQUISITION
LUC 75-6.14
I-75-6(35)206

BEGIN PROJECT
LUC 75-6.14
STA. 331+87.00

End Acquisition
Luc.-75-335
I-75-6(4)

Begin Acquisition
Luc.-75-100
I-75-6(5)

END ACQUISITION
LUC 75-6.14
I-75-6(35)206

END PROJECT
LUC 75-6.14
STA. 400+00.82

UTILITIES

- | | |
|---------------------------------------|--------------|
| COLUMBIA GAS OF OHIO | TOLEDO, OHIO |
| OHIO BELL TELEPHONE CO. | TOLEDO, OHIO |
| TOLEDO EDISON CO. | TOLEDO, OHIO |
| DIVISION OF WATER | TOLEDO, OHIO |
| DIVISION OF COMMUNICATION SERVICES | TOLEDO, OHIO |
| DIVISION OF SANITARY AND STORM SEWERS | TOLEDO, OHIO |
| A.T.&T. | TOLEDO, OHIO |

SUBDIVISION	RECORDING DATA	
	VOLUME	PAGE
Phillips Farm	1	114
Ext. of Collins Ottawa Heights Add.	25	17
Willow Wood Addition	17	41
McGrath Collingwood Park	15	16
Sanford Place	23	19
Morris and Phillips Addition	5	34
Bayers Subdivision	31	41
Joe E. Brown Park	38	24
Lenk's Grove Addn.	23	7

SCALE 1"=200'
 MADE REK DATE 2-20-69
 TRCD RHP DATE 2-23-69
 CRD RHL DATE 4-69
HOWARD, NEEDLES, TAMMEN & BERGENDOFF
 CONSULTING ENGINEERS
 KANSAS CITY CLEVELAND NEW YORK

NO.	REVISION	DATE	BY
4	Federal Number	9-24-69	LCE's
1	F&O.C. Comments	3-3-69	REK
2	Final Comments	4-17-69	REK
3	Additional Comments	4-69	REK

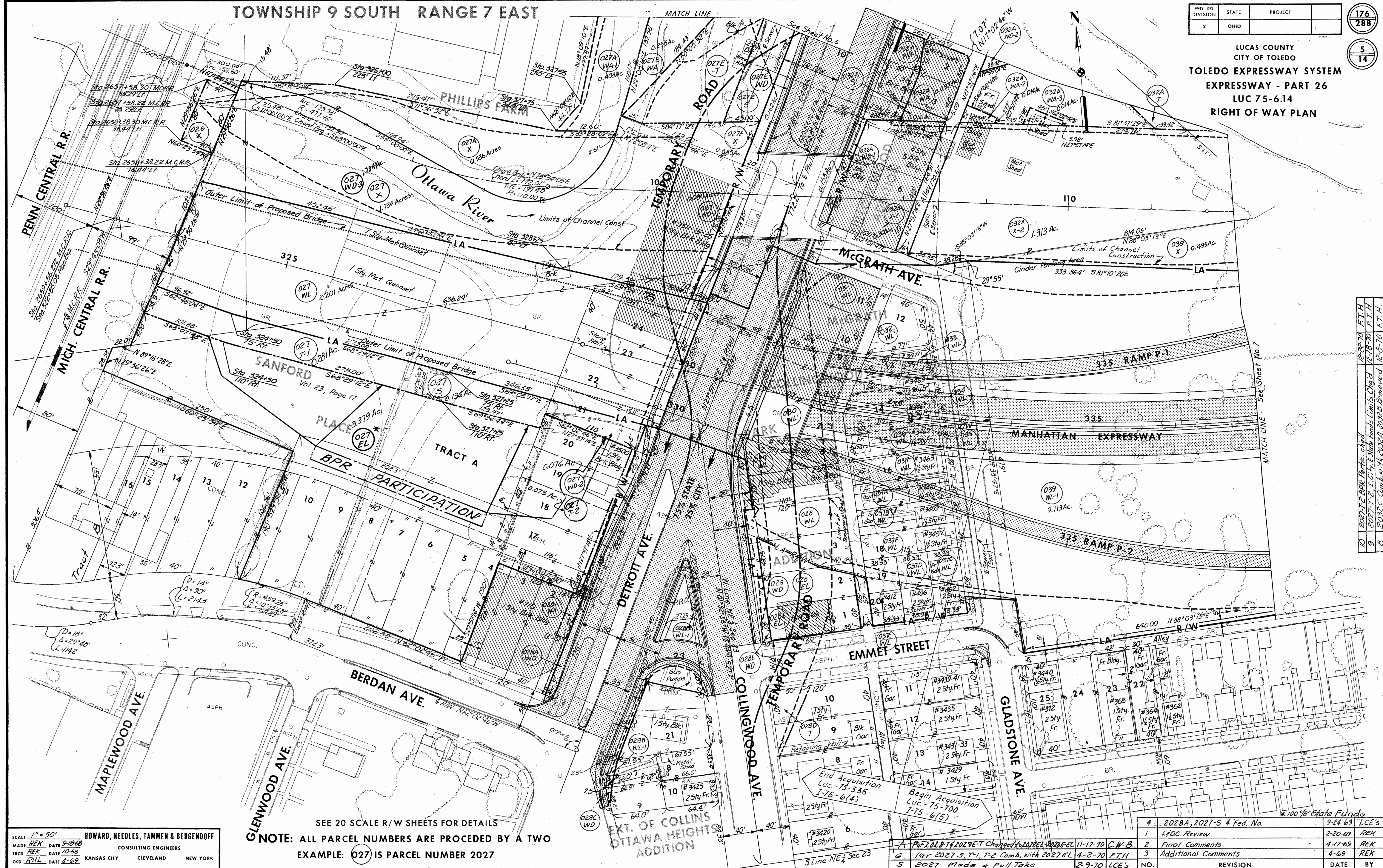
TOWNSHIP 9 SOUTH RANGE 7 EAST

FED. RD. DIVISION	STATE	PROJECT
2	OHIO	

176
288

5
14

LUCAS COUNTY
CITY OF TOLEDO
TOLEDO EXPRESSWAY SYSTEM
EXPRESSWAY - PART 26
LUC 75-6.14
RIGHT OF WAY PLAN



SEE 20 SCALE R/W SHEETS FOR DETAILS

NOTE: ALL PARCEL NUMBERS ARE PRECEDED BY A TWO
EXAMPLE: 027 IS PARCEL NUMBER 2027

SCALE 1" = 50'
MADE BY REK DATE 9-18-68
TRCD BY REK DATE 10-68
CHKD BY RHL DATE 4-69
HOWARD, NEEDLES, TAMMEN & BERGENOFF
CONSULTING ENGINEERS
KANSAS CITY CLEVELAND NEW YORK

NO.	REVISION	DATE	BY
4	2028A, 2027-S & Fed. No.	9-24-69	LCE's
1	FFOC Review	2-20-69	REK
2	Final Comments	4-17-69	REK
3	Additional Comments	4-69	REK
5	2027 Made a Full Take	2-9-70	LCE's

10 2027-F2 BPR Partic. chgd 12-23-70 F.T.H.
9 2027-F2, T-1, T-2, T-3 State Funds Limits Chgd 12-18-70 F.T.H.
8 2027-C Comb. w/4 2027A, 2027B Removed 12-8-70 F.T.H.

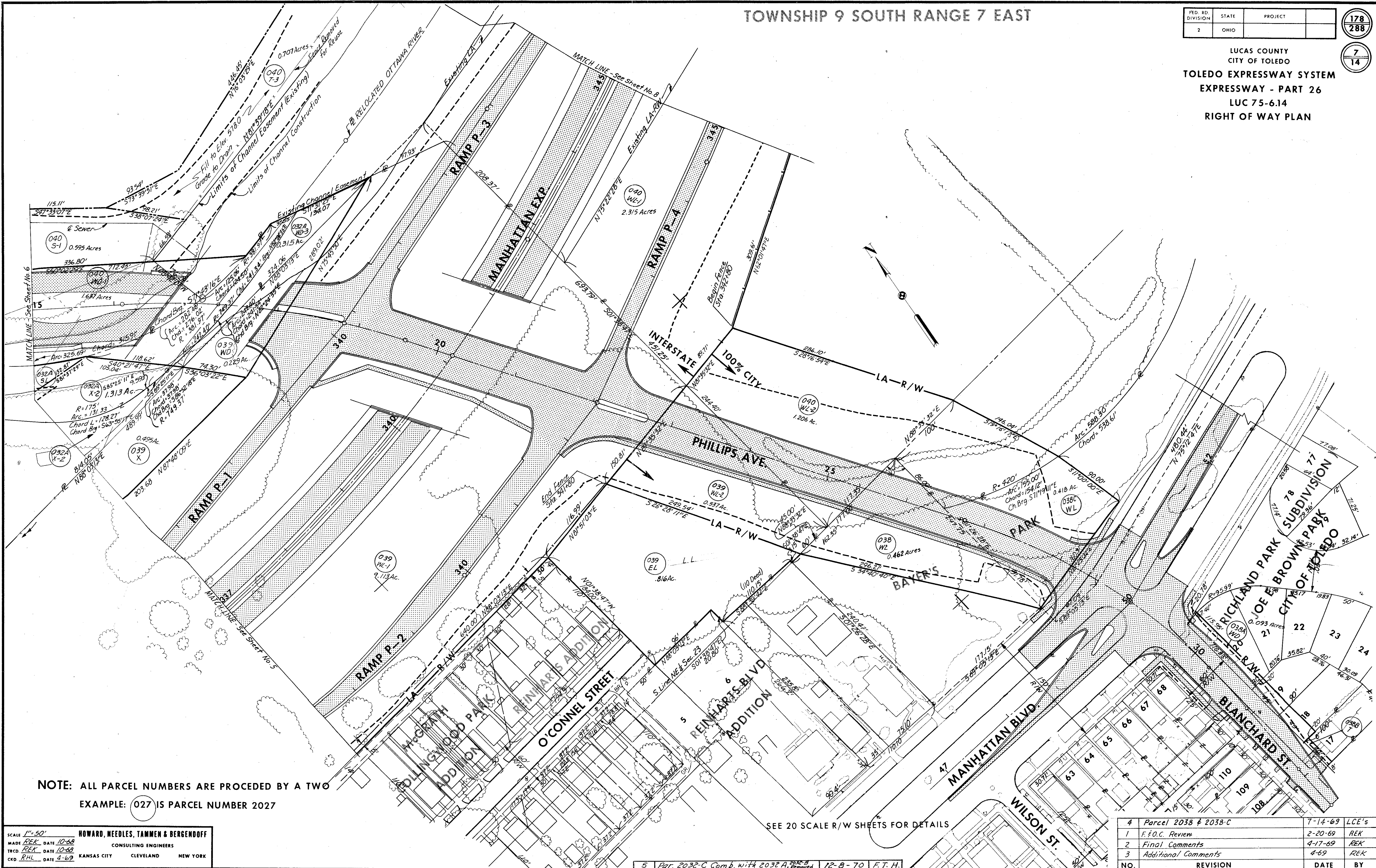
TOWNSHIP 9 SOUTH RANGE 7 EAST

FED. RD. DIVISION	STATE	PROJECT
2	OHIO	

178
288

7
14

LUCAS COUNTY
CITY OF TOLEDO
TOLEDO EXPRESSWAY SYSTEM
EXPRESSWAY - PART 26
LUC 75-6.14
RIGHT OF WAY PLAN



NOTE: ALL PARCEL NUMBERS ARE PRECEDED BY A TWO
EXAMPLE: 027 IS PARCEL NUMBER 2027

SCALE 1"=50'
MADE REK DATE 10-68
TRCD REK DATE 10-68
CKD RHL DATE 4-69
HOWARD, NEEDLES, TAMMEN & BERGENDOFF
CONSULTING ENGINEERS
KANSAS CITY CLEVELAND NEW YORK

SEE 20 SCALE R/W SHEETS FOR DETAILS

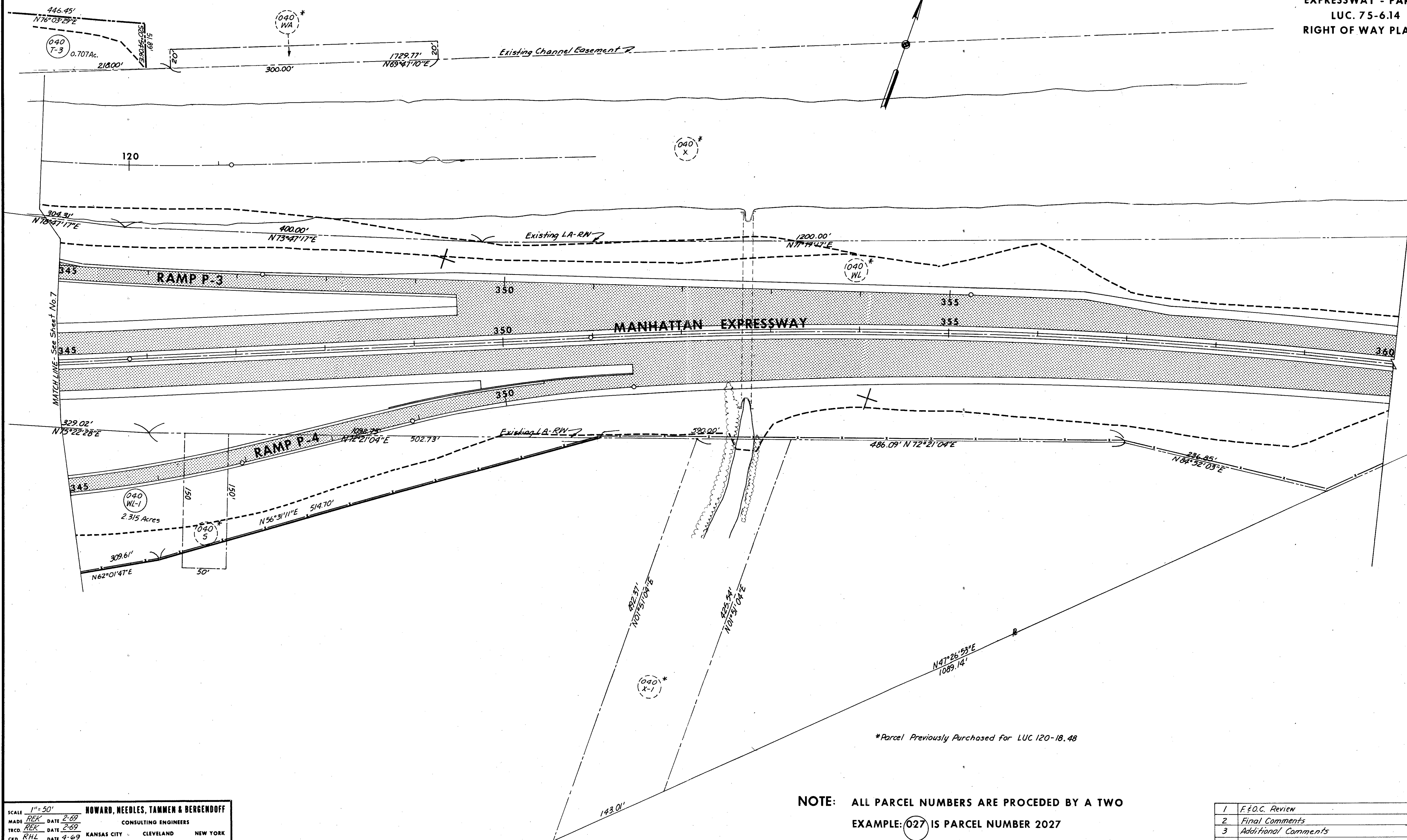
4	Parcel 2038 & 2038-C	7-14-69	LCE's
1	F.O.C. Review	2-20-69	REK
2	Final Comments	4-17-69	REK
3	Additional Comments	4-69	REK
NO.	REVISION	DATE	BY

FED. RD. DIVISION	STATE	PROJECT
2	OHIO	

179
288

8
14

LUCAS COUNTY
CITY OF TOLEDO
TOLEDO EXPRESSWAY SYSTEM
EXPRESSWAY - PART 26
LUC. 75-6.14
RIGHT OF WAY PLAN



SCALE 1" = 50'
MADE BY REK DATE 2-69
TRCD BY REK DATE 2-69
CKD BY RHL DATE 4-69
HOWARD, NEEDLES, TAMMEN & BERGENDOFF
CONSULTING ENGINEERS
KANSAS CITY CLEVELAND NEW YORK

NOTE: ALL PARCEL NUMBERS ARE PRECEDED BY A TWO
EXAMPLE: 027 IS PARCEL NUMBER 2027

1	F&O.C. Review	2-20-69	REK
2	Final Comments	4-17-69	REK
3	Additional Comments	4-69	REK
NO.	REVISION	DATE	BY

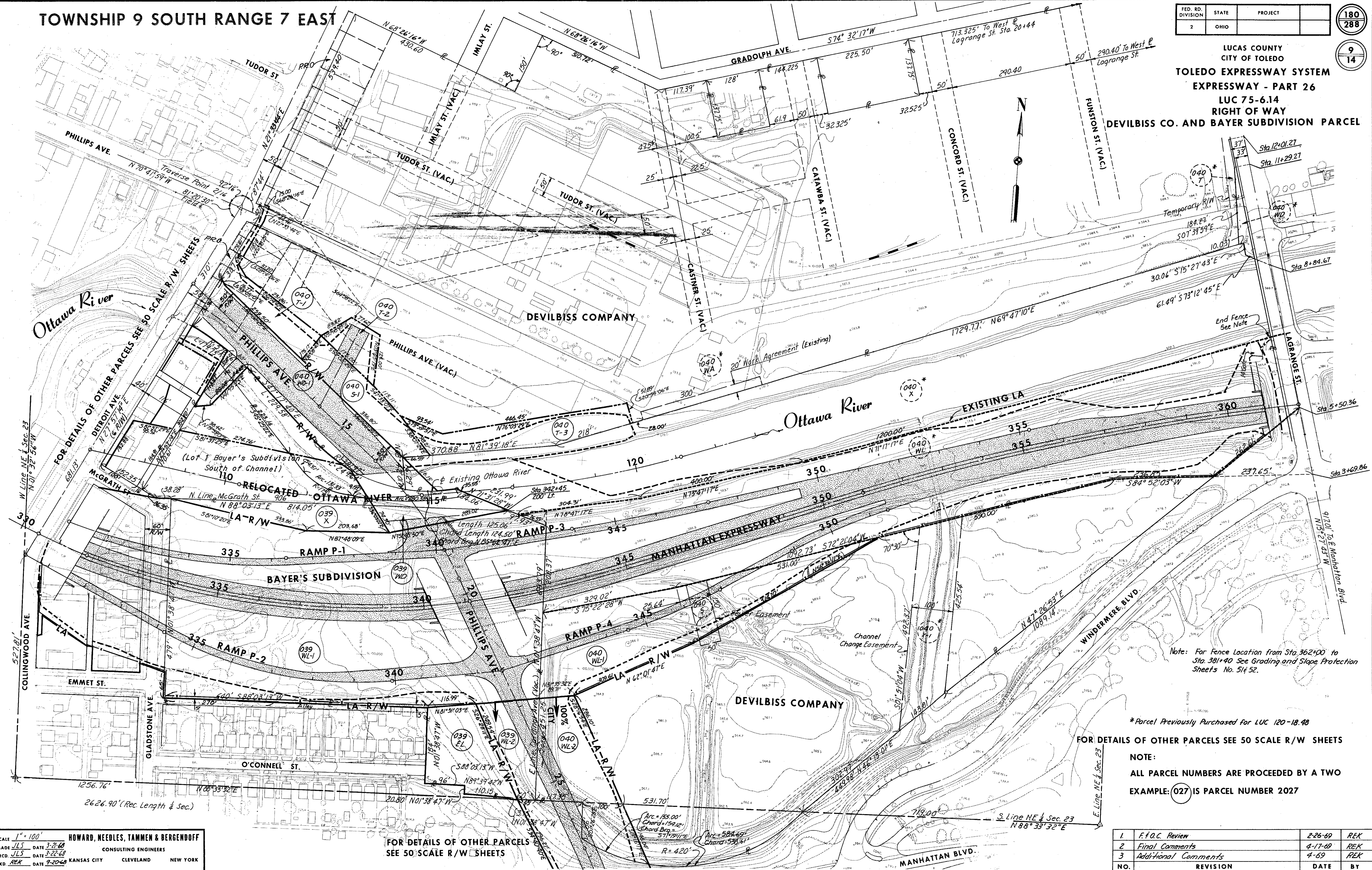
TOWNSHIP 9 SOUTH RANGE 7 EAST

FED. RD. DIVISION	STATE	PROJECT	
2	OHIO		

180
288

9
14

LUCAS COUNTY
CITY OF TOLEDO
TOLEDO EXPRESSWAY SYSTEM
EXPRESSWAY - PART 26
LUC 75-6.14
RIGHT OF WAY
DEVILBISS CO. AND BAYER SUBDIVISION PARCEL



Note: For Fence Location from Sta. 362+00 to Sta. 381+40 See Grading and Slope Protection Sheets No. 51 & 52.

* Parcel Previously Purchased for LUC 120-18.48

FOR DETAILS OF OTHER PARCELS SEE 50 SCALE R/W SHEETS

NOTE:
ALL PARCEL NUMBERS ARE PRECEDED BY A TWO
EXAMPLE: (027) IS PARCEL NUMBER 2027

SCALE 1" = 100'
MADE JLS DATE 3-21-68
TRCD JLS DATE 3-22-68
CKD REK DATE 9-20-68
HOWARD, NEEDLES, TAMMEN & BERGENDOFF
CONSULTING ENGINEERS
KANSAS CITY CLEVELAND NEW YORK

FOR DETAILS OF OTHER PARCELS
SEE 50 SCALE R/W SHEETS

NO.	REVISION	DATE	BY
1	F.F.O.C. Review	2-26-69	REK
2	Final Comments	4-17-69	REK
3	Additional Comments	4-69	REK

Revised July 1968

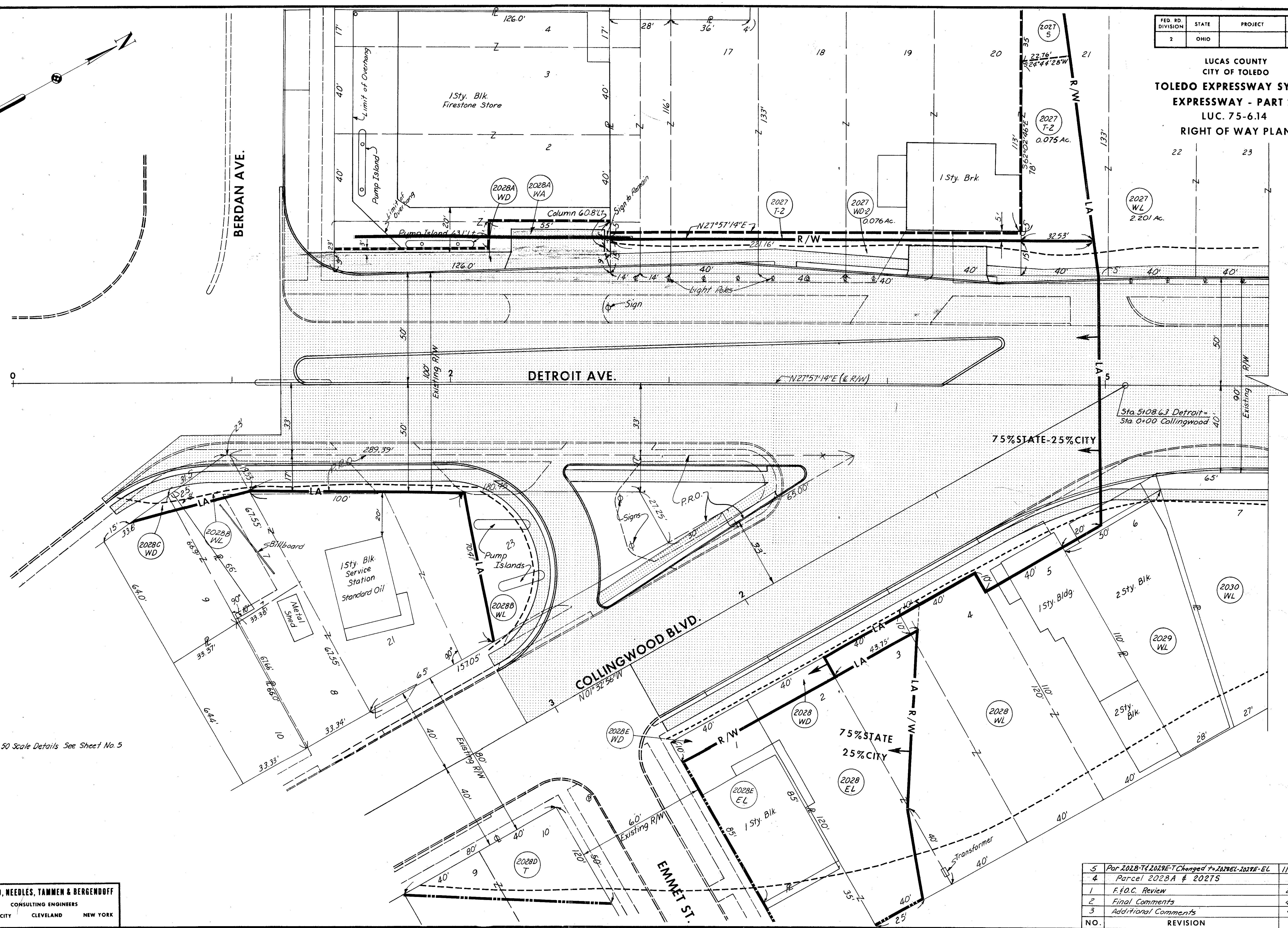
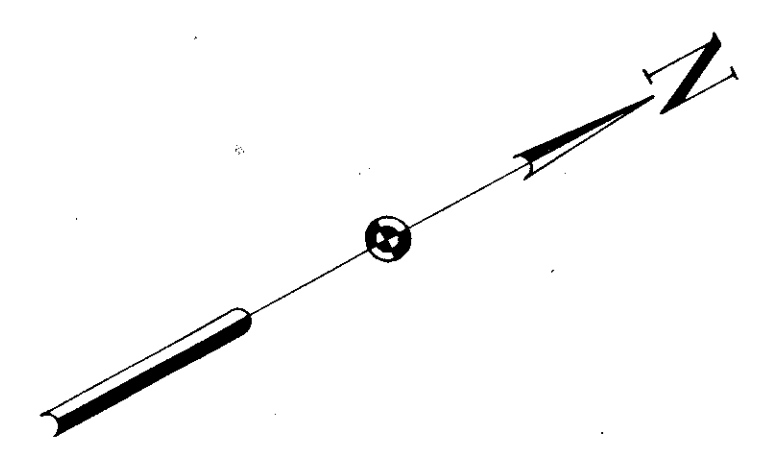
FOR ANY QUESTIONS PLEASE CONTACT ODOT DISTRICT 2 REAL ESTATE AT 419-353-8131

FED. RD. DIVISION	STATE	PROJECT
2	OHIO	

181
288

10
14

LUCAS COUNTY
CITY OF TOLEDO
TOLEDO EXPRESSWAY SYSTEM
EXPRESSWAY - PART 26
LUC. 75-6.14
RIGHT OF WAY PLAN



For 50 Scale Details See Sheet No. 5

SCALE 1" = 20' 0"
HOWARD, NEEDLES, TAMMEN & BERGENOFF
 MADE REK DATE 8/68 CONSULTING ENGINEERS
 TRCD LES DATE 10/68 KANSAS CITY CLEVELAND NEW YORK
 CKD RHL DATE 10/68

5	Par 2028-T4, 2029E-T Changed to 2029EL-2029E-EL	11-17-70	C.W.B.
4	Parcel 2028A & 2027S	9-69	LCE's
1	F.O.C. Review	2-26-69	REK
2	Final Comments	4-17-69	REK
3	Additional Comments	4-69	REK
NO.	REVISION	DATE	BY

Scan Date: 7/11/19

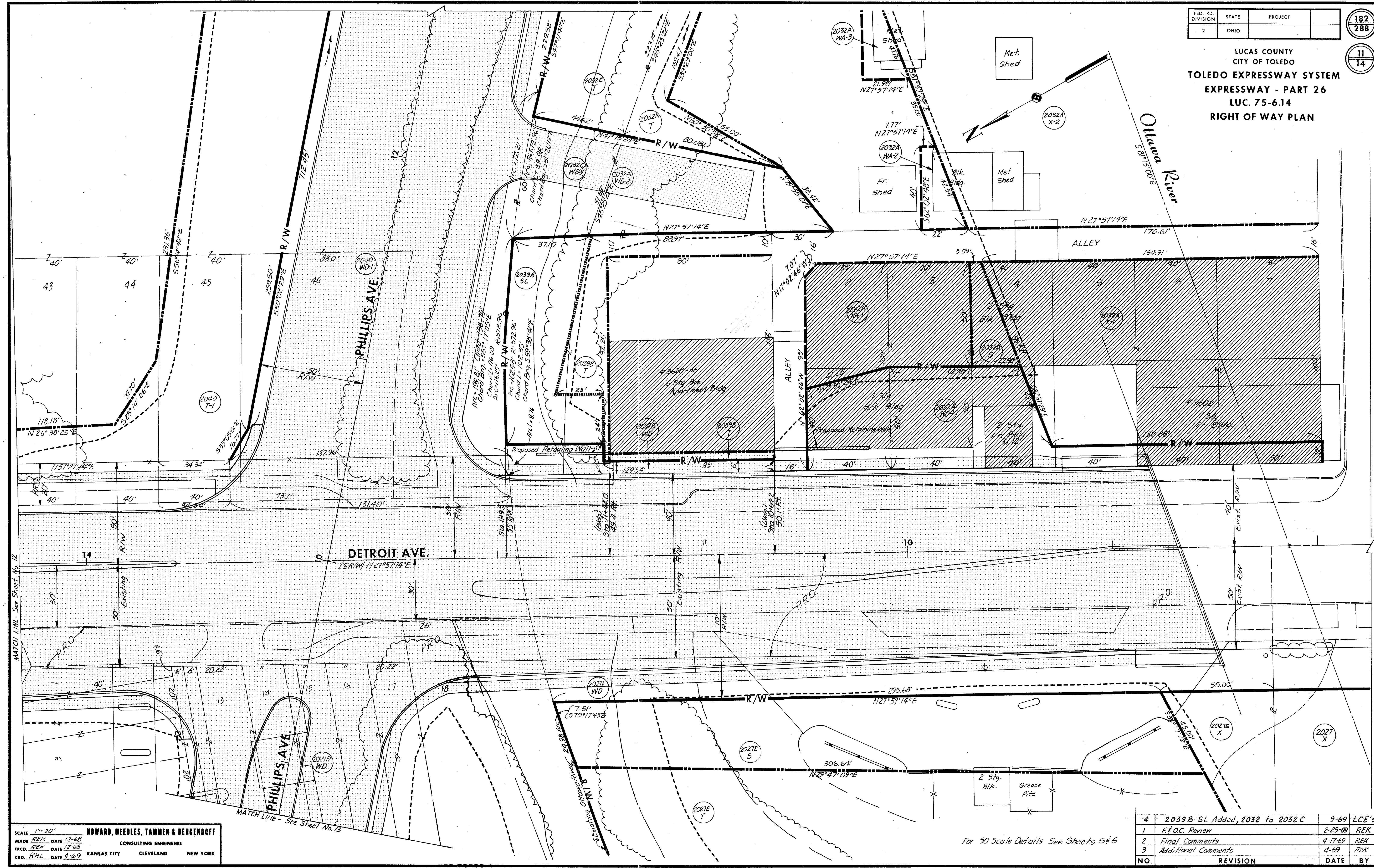
FOR ANY QUESTIONS PLEASE CONTACT ODOT DISTRICT 2 REAL ESTATE AT 419-353-8131

FED. RD. DIVISION	STATE	PROJECT
2	OHIO	

182
288

11
14

LUCAS COUNTY
CITY OF TOLEDO
TOLEDO EXPRESSWAY SYSTEM
EXPRESSWAY - PART 26
LUC. 75-6.14
RIGHT OF WAY PLAN



MATCH LINE - See Sheet No. 12

MATCH LINE - See Sheet No. 13

SCALE 1" = 20'
MADE REK DATE 12-68
TRCD. REK DATE 12-68
CKD. RHL DATE 4-69
HOWARD, NEEDLES, TAMMEN & BERGENDOFF
CONSULTING ENGINEERS
KANSAS CITY CLEVELAND NEW YORK

For 50 Scale Details See Sheets 546

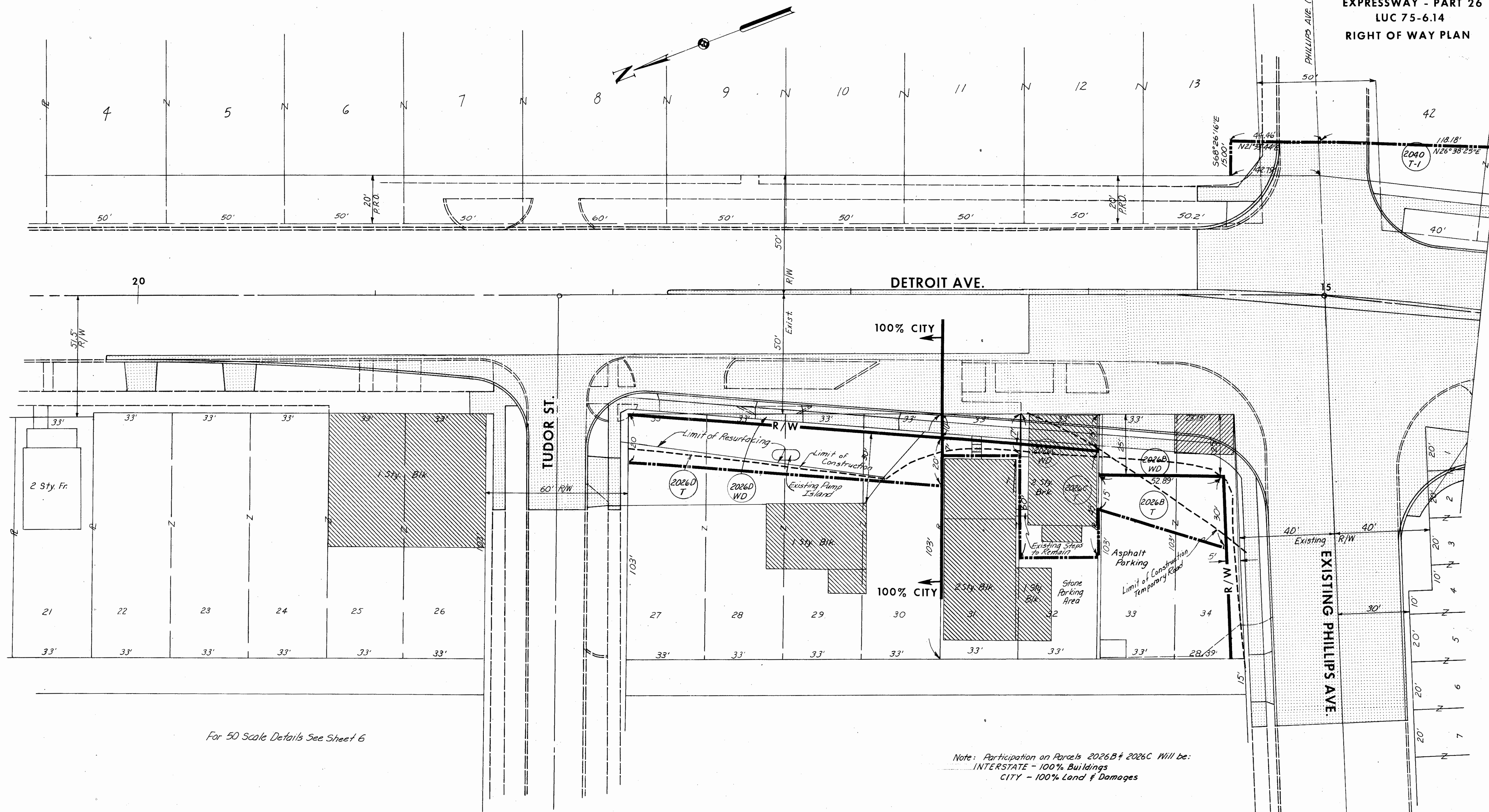
4	2039B-SL Added, 2032 to 2032C	9-69	LCE's
1	F&OC Review	2-25-69	REK
2	Final Comments	4-17-69	REK
3	Additional Comments	4-69	REK
NO.	REVISION	DATE	BY

FED. RD. DIVISION	STATE	PROJECT
2	OHIO	

183
288

12
14

LUCAS COUNTY
CITY OF TOLEDO
TOLEDO EXPRESSWAY SYSTEM
EXPRESSWAY - PART 26
LUC 75-6.14
RIGHT OF WAY PLAN



For 50 Scale Details See Sheet 6

Note: Participation on Parcels 2026B & 2026C Will be:
INTERSTATE - 100% Buildings
CITY - 100% Land & Damages

SCALE 1"=20'
HOWARD, NEEDLES, TAMMEN & BERGENDOFF
CONSULTING ENGINEERS
MADE RHL DATE 12-68
TRCD. GLO DATE 12-68
CKD. REK DATE 4-69 KANSAS CITY CLEVELAND NEW YORK

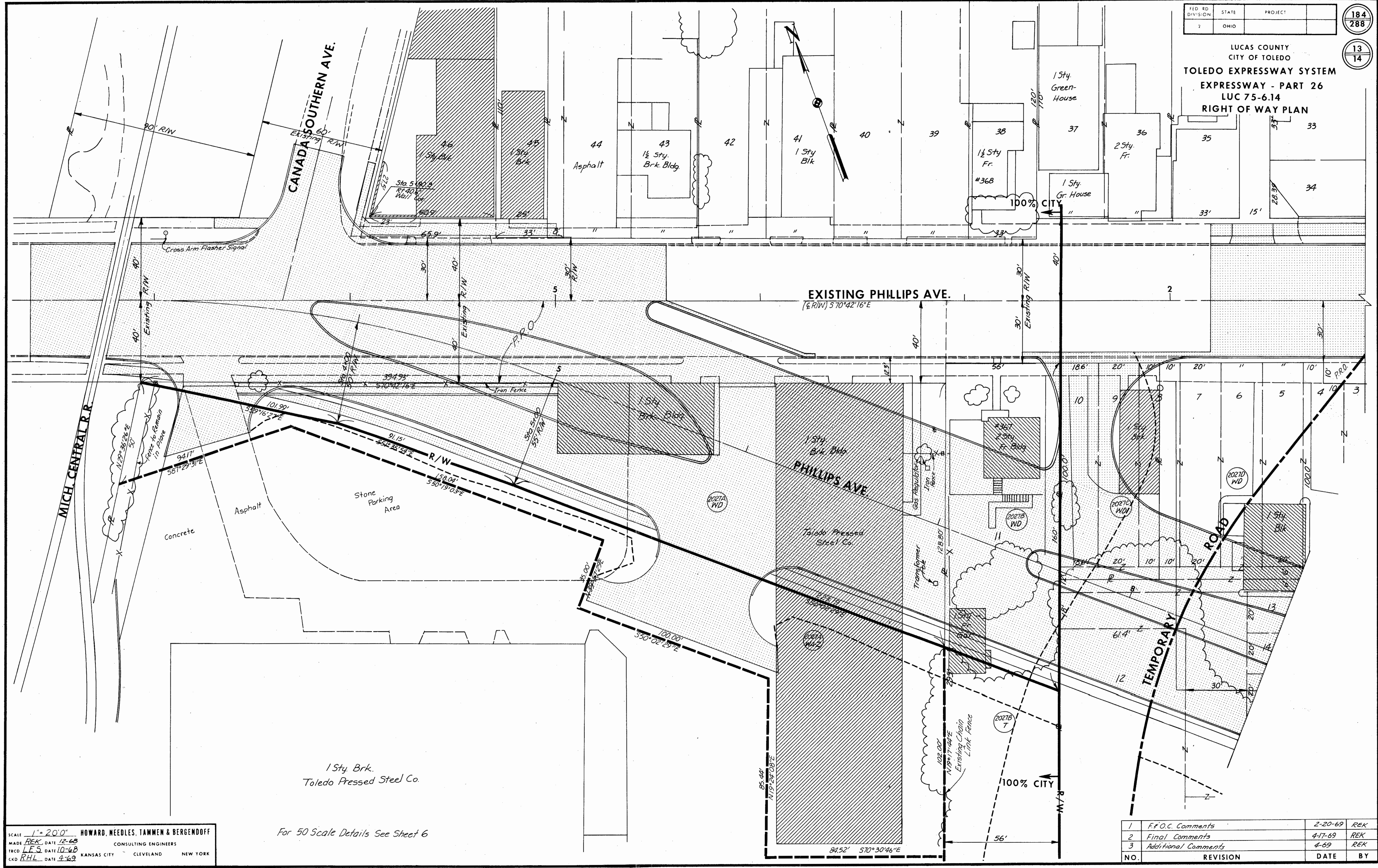
4	2026B & 2026C Part Note	9-69	LCE's
1	F.F.O.C. Review	2-26-69	REK
2	Final Comments	4-17-69	REK
3	Additional Comments	4-69	REK
NO.	REVISION	DATE	BY

FED. RD. DIVISION	STATE	PROJECT
2	OHIO	

184
288

13
14

LUCAS COUNTY
CITY OF TOLEDO
TOLEDO EXPRESSWAY SYSTEM
EXPRESSWAY - PART 26
LUC 75-6.14
RIGHT OF WAY PLAN



SCALE 1" = 20' 0"
MADE REK DATE 12-68
TRCD LFS DATE 10-68
KCD RHL DATE 4-69
HOWARD, NEEDLES, TAMMEN & BERGENDOFF
CONSULTING ENGINEERS
KANSAS CITY CLEVELAND NEW YORK

For 50 Scale Details See Sheet 6

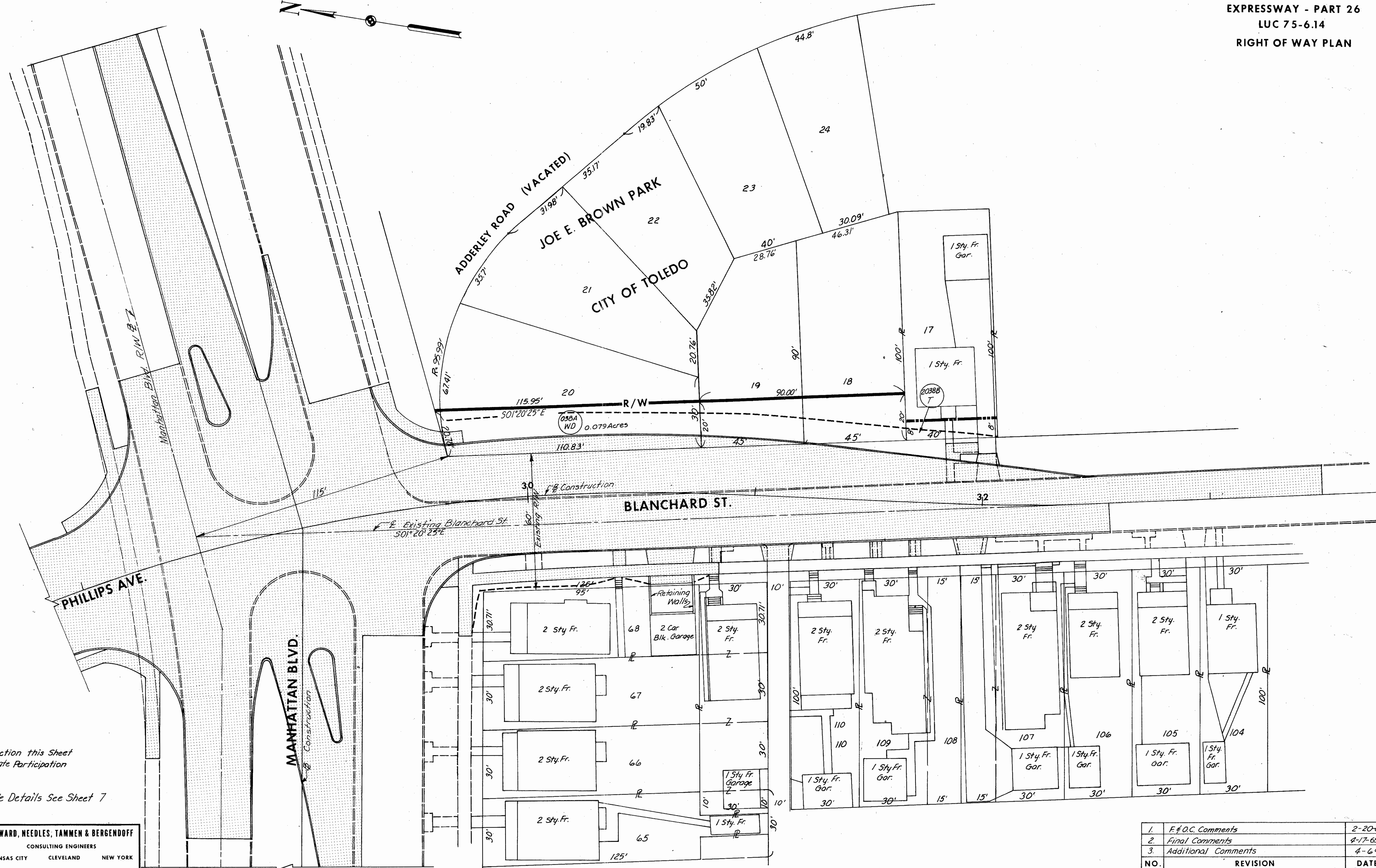
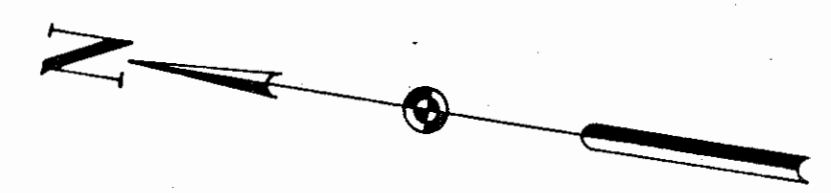
1	F.F.O.C. Comments	2-20-69	REK
2	Final Comments	4-17-69	REK
3	Additional Comments	4-69	REK
NO.	REVISION	DATE	BY

FED. RD. DIVISION	STATE	PROJECT
2	OHIO	

185
288

14
14

LUCAS COUNTY
CITY OF TOLEDO
TOLEDO EXPRESSWAY SYSTEM
EXPRESSWAY - PART 26
LUC 75-6.14
RIGHT OF WAY PLAN



All Construction this Sheet
is 100% State Participation

For 50 Scale Details See Sheet 7

SCALE	1" = 20'	HOWARD, NEEDLES, TAMMEN & BERGENDOFF
MADE	RHL DATE 12-68	CONSULTING ENGINEERS
TRCD	GLO DATE 12-68	
CKD	REK DATE 4-69	KANSAS CITY CLEVELAND NEW YORK

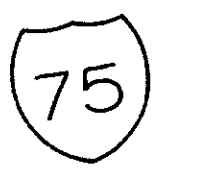
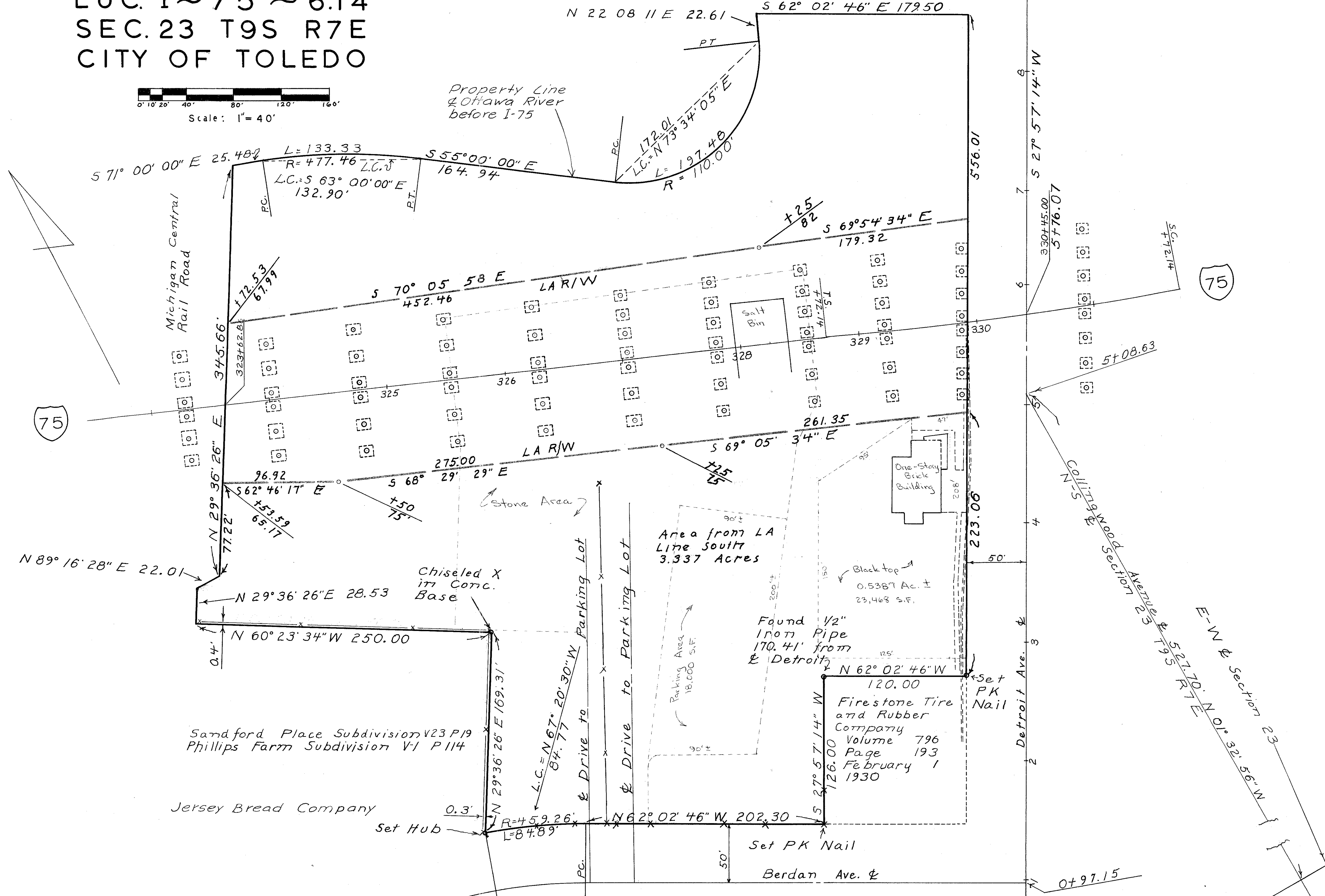
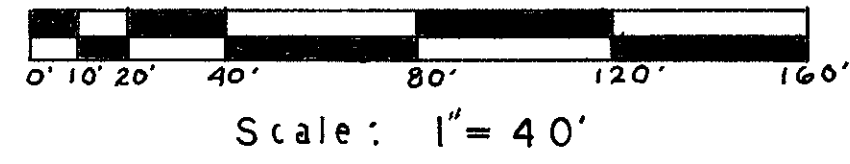
NO.	REVISION	DATE	BY
1.	F. & O.C. Comments	2-20-69	REK
2.	Final Comments	4-17-69	REK
3.	Additional Comments	4-69	REK

C-113
Detroit Ave to Duckrey Ave
LUC-12-614

PLAT OF PARCEL 2027 WD
 LUC. I~75~6.14
 SEC. 23 T9S R7E
 CITY OF TOLEDO

FED. RD. DIVISION	STATE	PROJECT
2	OHIO	

LUCAS COUNTY
 LUC-75-6.14



Sandford Place Subdivision V23 P19
 Phillips Farm Subdivision V1 P114

Jersey Bread Company

Firestone Tire and Rubber Company
 Volume 796
 Page 193
 February 1 1930