

REF	STATION	OFFSET	DESCRIPTION	GROUND COORDINATES	
	CL RW			NORTHING	EASTING
			1-75 CENTERLINE		
E	65+00.00	0.00	TYPE "A" AS PER PLAN	719111.313	1683423.222
F	67+16.76	0.00	TYPE "A" AS PER PLAN	719298.858	1683314.725
H	80+00.00	0.00	TYPE "A" AS PER PLAN	720295.500	1682507.290
I	80+60.90	0.00	TYPE "A" AS PER PLAN	720342.217	1682468.221
J	85+00.00	0.00	TYPE "A" AS PER PLAN	720687.449	1682197.155
K	85+60.90	0.00	TYPE "A" AS PER PLAN	720738.035	1682163.247
Q	110+00.00	0.00	TYPE "A" AS PER PLAN	723110.982	1681865.059
R	115+00.00	0.00	TYPE "A" AS PER PLAN	723610.653	1681883.196
S	116+67.84	0.00	TYPE "A" AS PER PLAN	723778.380	1681889.285
T	120+00.00	0.00	TYPE "A" AS PER PLAN	724110.444	1681895.413
U	122+97.84	0.00	TYPE "A" AS PER PLAN	724407.101	1681871.778
V	125+00.00	0.00	TYPE "A" AS PER PLAN	724604.357	1681828.105
W	130+00.00	0.00	TYPE "A" AS PER PLAN	725056.586	1681619.415
X	132+43.31	0.00	TYPE "A" AS PER PLAN	725248.711	1681470.497
Y	138+73.31	0.00	TYPE "A" AS PER PLAN	725658.119	1680993.024
Z	141+21.64	0.00	TYPE "A" AS PER PLAN	725807.356	1680794.530
			EMERALD AVE.		
AA	80+24.32	434.72' LT	MONUMENT ASSEMBLY	720035.276	1682158.212
BB	79+96.99	403.12' LT	MONUMENT ASSEMBLY	720034.578	1682199.984
CC	78+91.11	307.26' LT	MONUMENT ASSEMBLY	720014.856	1682341.439
DD	77+81.66	230.12' LT	MONUMENT ASSEMBLY	719980.386	1682470.832
EE	76+59.31	113.33' LT	MONUMENT ASSEMBLY	719961.447	1682638.911
FF	76+18.93	13.67' LT	MONUMENT ASSEMBLY	719994.410	1682741.267
GG	75+91.82	66.65' RT	MONUMENT ASSEMBLY	720025.140	1682820.276
HH	73+97.27	389.92' R1	MONUMENT ASSEMBLY	720083.281	1683193.061
DORR STREET					
VV	10+22.99	0.00	MONUMENT ASSEMBLY	725431.992	1680975.077

MONUMENT LEGEND

- EXISTING R/W MONUMENT BOX
- PROPOSED R/W MONUMENT BOX
- EXISTING CONCRETE MONUMENT
- PROPOSED TYPE A, AS PER PLAN
- RAILROAD SPIKE FOUND
- RAILROAD SPIKE SET
- IRON PIN FOUND
- IRON PIN FOUND W/ ID CAP
- IRON PIN SET W/ ID CAP
- IRON PIPE FOUND
- IRON PIPE SET
- P.K. NAIL FOUND
- P.K. NAIL SET

PROJECT CONTROL

STATE PLANE GRID NORTH ZONE ON NAD 83 (2011)
ADJUSTMENT DATUM:
PROJECT ADJUSTMENT FACTOR 1.000032834.

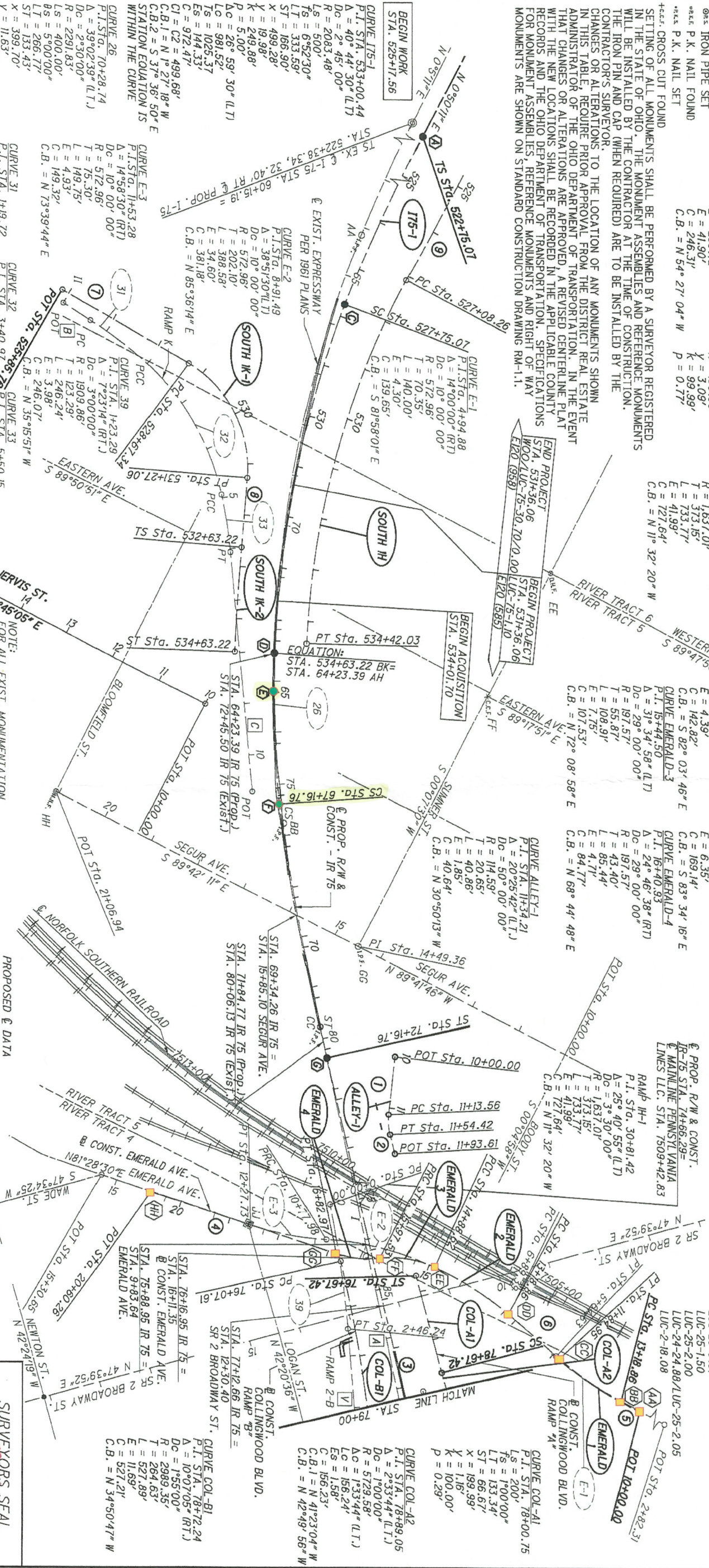
LUCAS COUNTY
CITY OF TOLEDO

RIVER TRACTS 4, 5 & 6 TOWN 3

NOTE:
THE PURPOSE OF THIS CENTERLINE PLAT IS TO SHOW THE RELATIONSHIP BETWEEN THE PROPOSED I-75 CENTERLINE OF SURVEY AND RIGHT OF WAY ALIGNMENT AND THE EXISTING I-75 CENTERLINE OF CONSTRUCTION, BASELINE ALIGNMENTS AND RIGHT OF WAY.
BASIS FOR BEARINGS:
ALL BEARINGS SHOWN ARE FOR PROJECT USE ONLY. THE BEARINGS SHOWN ARE RELATIVE TO GRID NORTH OF THE OHIO STATE PLANE COORDINATES, NORTH ZONE NAD 83 (2011 ADJUSTMENT) DATUM.

BASIS OF THE EXISTING & R/W AND THE EXISTING R/W WIDTH AND LOCATION WERE DETERMINED USING DOCUMENTATION OBTAINED FROM O.D.O.'S DISTRICT 2, THE LUCAS COUNTY ENGINEER'S OFFICE, THE LUCAS COUNTY AUDITOR'S OFFICE, AND THE LUCAS COUNTY RECORDERS OFFICE.
O.D.O.'S PLANS USED:
LUC-75-1-67
LUC-75-1-99
LUC-75-2-31
LUC-24-24-67
LUC-25-0-91
LUC-25-1-50
LUC-25-2-00
LUC-24-24-88/LUC-25-2-05
LUC-2-18-08

NOTE: CROSS CUT FOUND SETTING OF ALL MONUMENTS SHALL BE PERFORMED BY A SURVEYOR REGISTERED IN THE STATE OF OHIO. THE MONUMENT ASSEMBLIES AND REFERENCE MONUMENTS WILL BE INSTALLED BY THE CONTRACTOR AT THE TIME OF CONSTRUCTION. THE IRON PIN AND CAP (WHEN REQUIRED) ARE TO BE INSTALLED BY THE CONTRACTOR'S SURVEYOR. TO THE LOCATION OF ANY MONUMENTS SHOWN IN THIS TABLE, REQUIRE PRIOR APPROVAL FROM THE DISTRICT REAL ESTATE ADMINISTRATOR OF THE OHIO DEPARTMENT OF TRANSPORTATION. IN THE EVENT THAT CHANGES OR ALTERATIONS ARE APPROVED, A REVISED CENTERLINE PLAT RECORDS AND THE OHIO DEPARTMENT OF TRANSPORTATION. SPECIFICATIONS FOR MONUMENT ASSEMBLIES, REFERENCE MONUMENTS AND RIGHT OF WAY MONUMENTS ARE SHOWN ON STANDARD CONSTRUCTION DRAWING RM-1.1.



PROPOSED & DATA

1	N 20°37'22" W	113.56'	7	N 86°35'31" E	281.68'
2	N 41°03'04" W	39.19'	8	N 22°18'36" E	136.16'
3	N 39°54'19" W	844.14'	9	N 01°18'08" E	965.53'
4	N 81°08'07" E	377.29'	10	N 86°35'31" E	281.68'
5	S 89°02'34" E	41.78'	11	N 22°18'36" E	136.16'
6	S 75°04'59" E	133.91'	12	N 01°18'08" E	965.53'

EXISTING & DATA

1	N 38°57'28" W	1105.25'
2	N 83°56'17" W	63.00'
3	N 32°17'10" W	463.70'
4	N 31°34'49" E	353.77'

LEGEND
A - EXISTING & DATA
B - PROPOSED & DATA
C - EXISTING & MONUMENTATION
D - PROPOSED & MONUMENTATION

NOTE:
FOR ALL EXIST. MONUMENTATION STATION AND OFFSETS SEE SHEET NO. 7
FOR ALL PROP. MONUMENTATION STATION AND OFFSETS SEE SHEET NO. 7

RECEIVED MAY 20, 2016
RECORDED INSTR. NO. = 20160520-0019227
COUNTY RECORDER

THIS PLAT REPLACES THE PLAT INSTRUMENT # 20160417-0014652.

NOTE:
1. R. J. Lumbrezer, P.S., #8029 has conducted a survey of the existing conditions for the Ohio Department of Transportation, P.S. #8029. The results of that survey are contained herein. The horizontal coordinates expressed herein are based on the Ohio State Plane Coordinate System, NORTH ZONE on NAD 83 (2011) datum. The Project Coordinates (US Survey Feet) are relative to State Plane North Zone on NAD 83 (2011) datum. The locations of the existing property lines and centerline of existing right of way for property taken contained herein. All of my work contained herein was conducted in accordance with Ohio Administrative Code 4733-37 and "my" as used herein are to mean either myself or someone working under my direct supervision.

Date: 5-20-16

SURVEYORS SEAL
STATE OF OHIO
REGISTERED SURVEYOR
RONALD J. LUMBREZER
8029

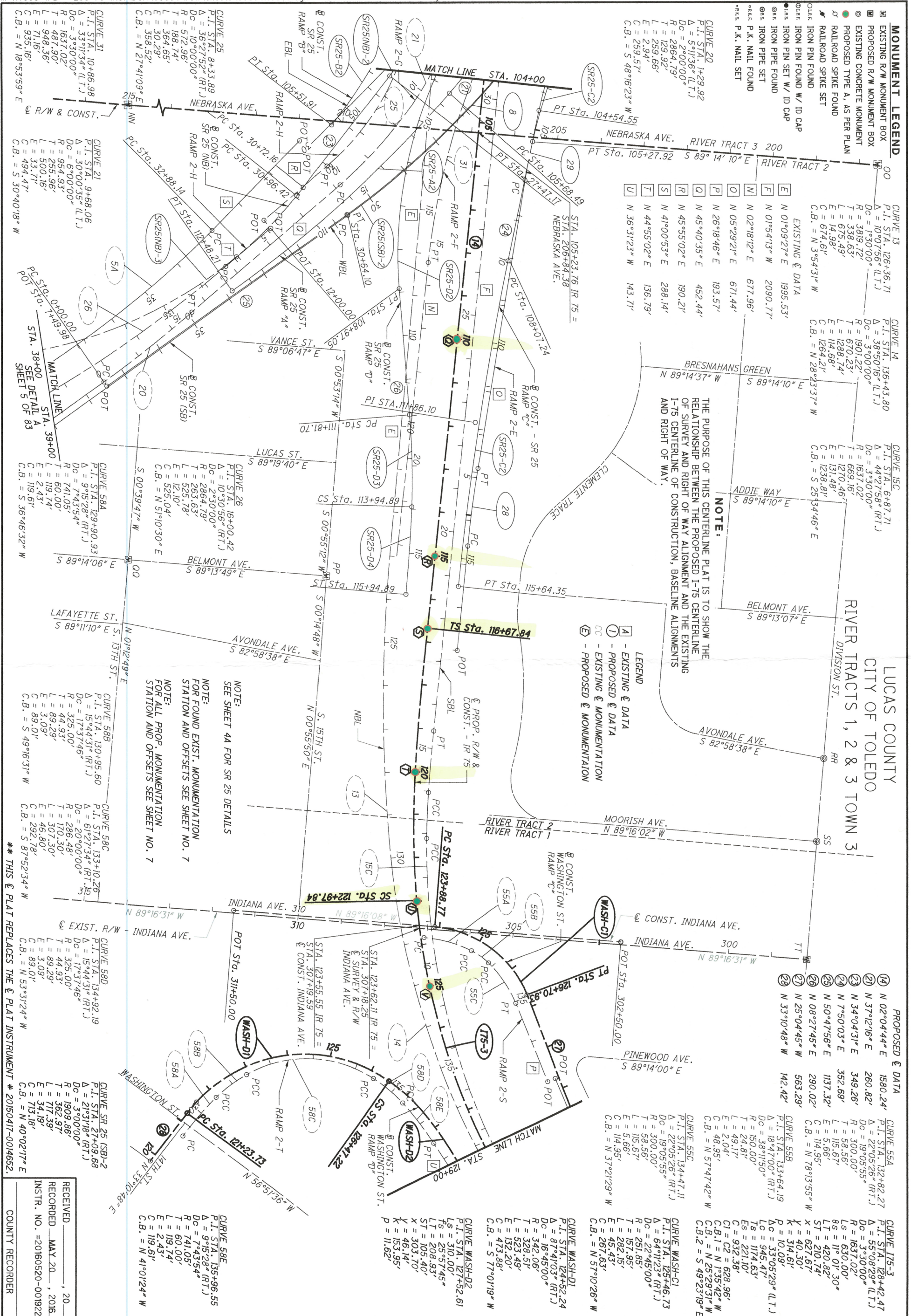
- MONUMENT LEGEND**
- EXISTING R/W MONUMENT BOX
 - PROPOSED R/W MONUMENT BOX
 - EXISTING CONCRETE MONUMENT
 - PROPOSED TYPE A, AS PER PLAN
 - RAILROAD SPIKE FOUND
 - RAILROAD SPIKE SET
 - IRON PIN FOUND
 - IRON PIN FOUND W/ ID CAP
 - IRON PIPE FOUND W/ ID CAP
 - IRON PIPE FOUND
 - IRON PIPE SET
 - IRON PIPE SET
 - P.K. NAIL FOUND
 - P.K. NAIL SET

CURVE	P.I. STA.	Δ	Dc	R	T	L	E	C	C.B.
CURVE 13	126+36.71	10°07'56" (L.T.)	1030.00'	388.72'	388.72'	677.44'	1995.53'	2090.77'	N 01°09'27" E
CURVE 14	136+43.80	38°50'16" (R.T.)	3000.00'	1901.22'	1901.22'	3802.44'	12288.74'	1254.21'	N 89°14'10" E
CURVE 15C	6+87.71	44°07'58" (R.T.)	3000.00'	1637.02'	1637.02'	3274.04'	1238.81'	25134.46" E	S 89°14'10" E

NOTE:
THE PURPOSE OF THIS CENTERLINE PLAT IS TO SHOW THE RELATIONSHIP BETWEEN THE PROPOSED I-75 CENTERLINE OF SURVEY AND RIGHT OF WAY ALIGNMENT AND THE EXISTING I-75 CENTERLINE OF CONSTRUCTION, BASELINE ALIGNMENTS AND RIGHT OF WAY.

- LEGEND**
- EXISTING & DATA
 - PROPOSED & DATA
 - EXISTING & MONUMENTATION
 - PROPOSED & MONUMENTATION

LUCAS COUNTY
CITY OF TOLEDO
RIVER TRACTS 1, 2 & 3 TOWN 3
DIVISION ST.



PROPOSED & DATA

Station	Angle	Distance	Curve Data
14	N 02°04'44" E	1580.24'	CURVE 55A
21	N 37°12'16" E	260.82'	P.I. STA. 132+82.27
23	N 34°04'31" E	349.26'	Δ = 22°05'26" (R.T.)
24	N 7°50'03" E	352.69'	Dc = 19°05'55"
29	N 50°47'56" E	1137.32'	R = 300.00'
29	N 08°27'45" E	290.02'	T = 15.67'
29	N 25°04'45" W	563.29'	L = 115.67'
29	N 33°10'48" W	142.42'	E = 5.66'
			C = 114.95'
			C.B. = N 78°13'55" W

RECEIVED MAY 20, 2018
RECORDED MAY 20, 2018
INSTR. NO. = 20180520-0019227
COUNTY RECORDER

LUC-75-1.10

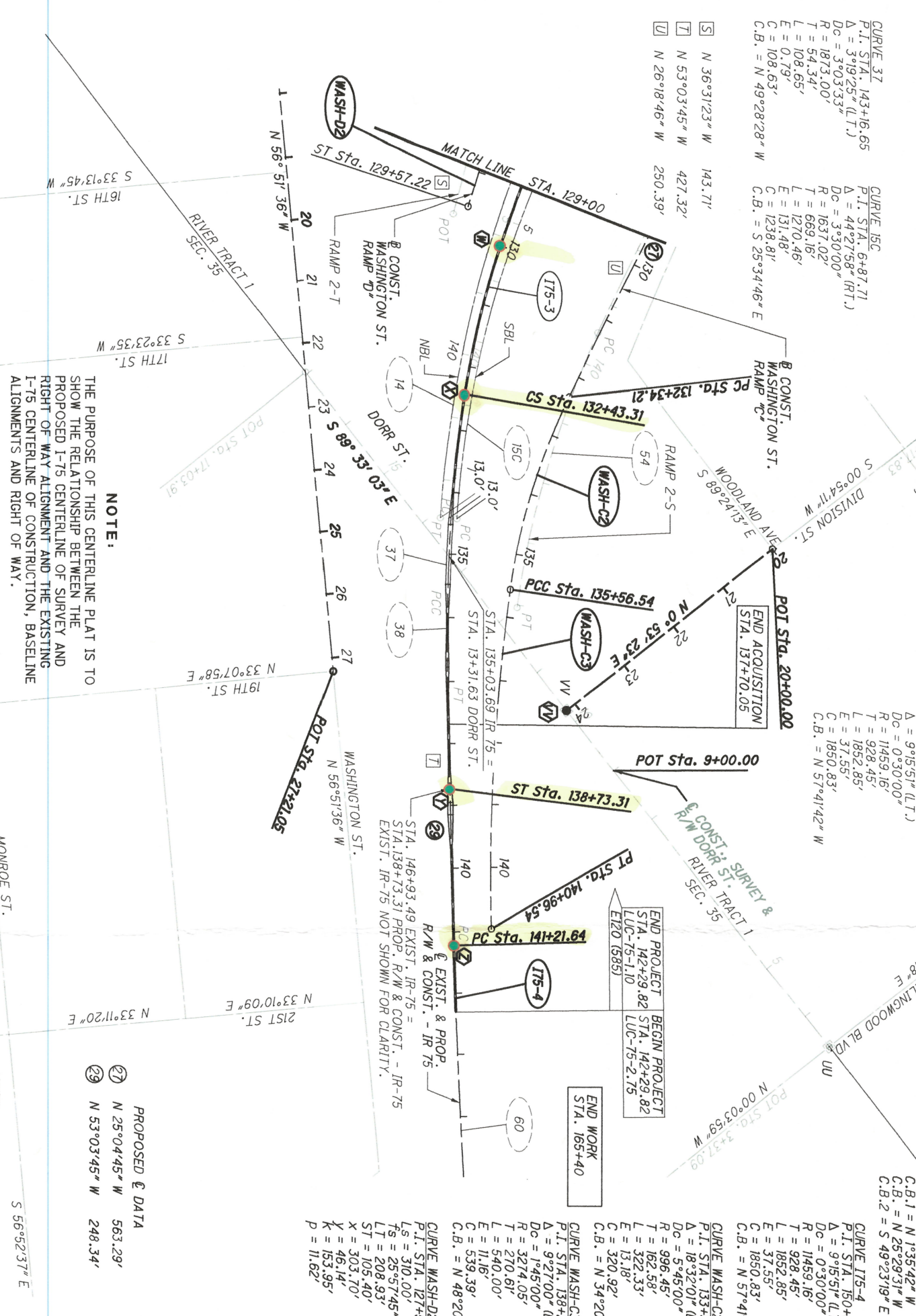
**CENTERLINE PLAT (4 OF 9)
STA. 104+00 TO STA. 129+00**

R/W DESIGNER TLT	PID NO. 93594	
R/W REVIEWER RUL		

- MONUMENT LEGEND**
- ▣ EXISTING R/W MONUMENT BOX
 - ▣ PROPOSED R/W MONUMENT BOX
 - EXISTING CONCRETE MONUMENT
 - PROPOSED TYPE A, AS PER PLAN
 - ✂ RAILROAD SPIKE FOUND
 - IRON PIN FOUND
 - IRON PIN FOUND W/ ID CAP
 - IRON PIPE SET W/ ID CAP
 - IRON PIPE SET
 - IRON PIPE SET
 - P.K. NAIL FOUND
 - P.K. NAIL SET

- CURVE 14**
 P.I. STA. 136+43.80
 Δ = 38°00'16" (L.T.)
 Dc = 3°00'00"
 R = 1901.22'
 L = 670.23'
 T = 1288.74'
 E = 114.68'
 C = 1264.21'
 C.B. = N 28°23'37" W
- CURVE 38**
 P.I. STA. 144+42.74
 Δ = 1°55'35" (L.T.)
 Dc = 1°20'31"
 R = 4269.64'
 L = 71.78'
 T = 143.55'
 E = 0.60'
 C = 143.54'
 C.B. = N 52°05'57" W
- CURVE 54**
 P.I. STA. 141+77.67
 Δ = 17°05'08" (L.T.)
 Dc = 3°45'00"
 R = 1527.89'
 L = 152.91'
 T = 229.51'
 E = 455.61'
 C = 171.14'
 C.B. = N 34°51'46" W
- CURVE 60**
 P.I. STA. 158+70.28
 Δ = 9°15'51" (L.T.)
 Dc = 0°30'00"
 R = 11459.16'
 L = 928.45'
 T = 1852.85'
 E = 37.55'
 C = 1850.83'
 C.B. = N 57°41'42" W

- CURVE 175-3**
 P.I. STA. 128+42.47
 Δ = 55°08'29" (L.T.)
 Dc = 3°30'00"
 R = 1637.02'
 Ls = 630.00'
 Δs = 11° 01' 30"
 Δt = 420.82'
 L = 210.74'
 X = 627.67'
 Y = 40.30'
 K = 314.61'
 P = 10.09'
 Δc = 33°05'29" (L.T.)
 Lc = 945.47'
 Ts = 1174.63'
 Es = 221.10'
 C = 932.38'
 C1 = C2 = 628.96'
 C.B.1 = N 1°35'42" W
 C.B.2 = N 25°29'31" W
 C.B.2 = S 49°23'19" E
- CURVE 175-4**
 P.I. STA. 150+50.09
 Δ = 9°16'51" (L.T.)
 Dc = 0°30'00"
 R = 11459.16'
 L = 928.45'
 T = 1852.85'
 E = 37.55'
 C = 1850.83'
 C.B. = N 57°41'42" W
- CURVE WASH-C2**
 P.I. STA. 133+96.80
 Δ = 18°32'01" (L.T.)
 Dc = 5°45'00"
 R = 966.45'
 T = 162.58'
 L = 322.33'
 E = 13.18'
 C = 320.92'
 C.B. = N 34°20'45" W
- CURVE WASH-C3**
 P.I. STA. 138+27.15
 Δ = 9°27'00" (L.T.)
 Dc = 1°45'00"
 R = 3274.05'
 L = 270.61'
 T = 540.00'
 E = 11.16'
 C = 539.39'
 C.B. = N 48°20'16" W
- CURVE WASH-D2**
 P.I. STA. 127+52.61
 Ls = 310.00'
 Δs = 25°57'45"
 Δt = 208.93'
 L = 105.40'
 X = 303.70'
 Y = 46.14'
 K = 153.95'
 P = 11.62'



NOTE:
 THE PURPOSE OF THIS CENTERLINE PLAT IS TO SHOW THE RELATIONSHIP BETWEEN THE PROPOSED I-75 CENTERLINE OF SURVEY AND RIGHT-OF-WAY ALIGNMENT AND THE EXISTING I-75 CENTERLINE OF CONSTRUCTION, BASELINE ALIGNMENTS AND RIGHT OF WAY.

NOTE:
 FOR ALL PROP. MONUMENTATION STATION AND OFFSETS SEE SHEET NO. 7

NOTE:
 FOR FOUND EXIST. MONUMENTATION STATION AND OFFSETS SEE SHEET NO. 7

LEGEND

- ▣ - EXISTING & DATA
- ▣ - PROPOSED & DATA
- ▣ - EXISTING & MONUMENTATION
- ▣ - PROPOSED & MONUMENTATION

PROPOSED & DATA

27 N 25°04'45" W 563.29'

28 N 53°03'45" W 248.34'

RECEIVED _____, 20____

RECORDED MAY 20, 2018

INSTR. NO. = 20180520-0019227

COUNTY RECORDER

LUC-75-1.10

CENTERLINE PLAT (6 OF 9)

STA. 129+00 TO STA. 154+00

R/W DESIGNER
TLT

R/W REVIEWER
R/JL

PID NO.
93594

HORIZONTAL SCALE IN FEET

0 50 100 200

DETAIL A

CURVE 5B
 P.I. STA. 39+24.17
 Δ = 14° 30' 11" (RT.)
 Dc = 2° 00' 00"
 R = 1145.92'
 L = 145.81'
 T = 290.06'
 E = 9.24'
 C = 289.29'
 C.B. = N 60° 31' 19" E

CURVE 26
 P.I. STA. 16+00.42
 Δ = 10° 30' 36" (RT.)
 Dc = 6° 30' 00"
 R = 881.47'
 L = 207.90'
 T = 408.35'
 E = 24.19'
 C = 404.70'
 C.B. = N 69° 42' 15" E

CURVE 27
 P.I. STA. 20+70.47
 Δ = 26° 32' 33" (RT.)
 Dc = 6° 30' 00"
 R = 881.47'
 L = 207.90'
 T = 408.35'
 E = 24.19'
 C = 404.70'
 C.B. = N 69° 42' 15" E

CURVE SR25(SB)-3
 P.I. STA. 43+33.23
 Δ = 17° 39' 11" (LT.)
 Dc = 6° 45' 00"
 R = 848.83'
 L = 131.81'
 T = 261.53'
 E = 10.17'
 C = 260.49'
 C.B. = N 41° 58' 20" E

CURVE 175-3
 P.I. STA. 128+42.47
 Δ = 55°08'29" (L.T.)
 Dc = 3°30'00"
 R = 1637.02'
 Ls = 630.00'
 Δs = 11° 01' 30"
 Δt = 420.82'
 L = 210.74'
 X = 627.67'
 Y = 40.30'
 K = 314.61'
 P = 10.09'
 Δc = 33°05'29" (L.T.)
 Lc = 945.47'
 Ts = 1174.63'
 Es = 221.10'
 C = 932.38'
 C1 = C2 = 628.96'
 C.B.1 = N 1°35'42" W
 C.B.2 = N 25°29'31" W
 C.B.2 = S 49°23'19" E

CURVE 175-4
 P.I. STA. 150+50.09
 Δ = 9°16'51" (L.T.)
 Dc = 0°30'00"
 R = 11459.16'
 L = 928.45'
 T = 1852.85'
 E = 37.55'
 C = 1850.83'
 C.B. = N 57°41'42" W

CURVE WASH-C2
 P.I. STA. 133+96.80
 Δ = 18°32'01" (L.T.)
 Dc = 5°45'00"
 R = 966.45'
 T = 162.58'
 L = 322.33'
 E = 13.18'
 C = 320.92'
 C.B. = N 34°20'45" W

CURVE WASH-C3
 P.I. STA. 138+27.15
 Δ = 9°27'00" (L.T.)
 Dc = 1°45'00"
 R = 3274.05'
 L = 270.61'
 T = 540.00'
 E = 11.16'
 C = 539.39'
 C.B. = N 48°20'16" W

CURVE WASH-D2
 P.I. STA. 127+52.61
 Ls = 310.00'
 Δs = 25°57'45"
 Δt = 208.93'
 L = 105.40'
 X = 303.70'
 Y = 46.14'
 K = 153.95'
 P = 11.62'

CURVE SR25(SB)-3
 P.I. STA. 43+33.23
 Δ = 17° 39' 11" (LT.)
 Dc = 6° 45' 00"
 R = 848.83'
 L = 131.81'
 T = 261.53'
 E = 10.17'
 C = 260.49'
 C.B. = N 41° 58' 20" E

CURVE 26
 P.I. STA. 16+00.42
 Δ = 10° 30' 36" (RT.)
 Dc = 6° 30' 00"
 R = 881.47'
 L = 207.90'
 T = 408.35'
 E = 24.19'
 C = 404.70'
 C.B. = N 69° 42' 15" E

CURVE 27
 P.I. STA. 20+70.47
 Δ = 26° 32' 33" (RT.)
 Dc = 6° 30' 00"
 R = 881.47'
 L = 207.90'
 T = 408.35'
 E = 24.19'
 C = 404.70'
 C.B. = N 69° 42' 15" E

CURVE SR25(SB)-3
 P.I. STA. 35+94.45
 Δ = 54°12'32" (RT.)
 Dc = 5° 36'53"
 R = 1020.45'
 L = 522.29'
 T = 965.47'
 E = 125.89'
 C = 929.86'
 C.B. = N 61°10'47" E

CURVE 5B
 P.I. STA. 39+24.17
 Δ = 14° 30' 11" (RT.)
 Dc = 2° 00' 00"
 R = 1145.92'
 L = 145.81'
 T = 290.06'
 E = 9.24'
 C = 289.29'
 C.B. = N 60° 31' 19" E

CURVE 26
 P.I. STA. 16+00.42
 Δ = 10° 30' 36" (RT.)
 Dc = 6° 30' 00"
 R = 881.47'
 L = 207.90'
 T = 408.35'
 E = 24.19'
 C = 404.70'
 C.B. = N 69° 42' 15" E

CURVE 27
 P.I. STA. 20+70.47
 Δ = 26° 32' 33" (RT.)
 Dc = 6° 30' 00"
 R = 881.47'
 L = 207.90'
 T = 408.35'
 E = 24.19'
 C = 404.70'
 C.B. = N 69° 42' 15" E

CURVE SR25(SB)-3
 P.I. STA. 35+94.45
 Δ = 54°12'32" (RT.)
 Dc = 5° 36'53"
 R = 1020.45'
 L = 522.29'
 T = 965.47'
 E = 125.89'
 C = 929.86'
 C.B. = N 61°10'47" E

CURVE 5B
 P.I. STA. 39+24.17
 Δ = 14° 30' 11" (RT.)
 Dc = 2° 00' 00"
 R = 1145.92'
 L = 145.81'
 T = 290.06'
 E = 9.24'
 C = 289.29'
 C.B. = N 60° 31' 19" E

CURVE 26
 P.I. STA. 16+00.42
 Δ = 10° 30' 36" (RT.)
 Dc = 6° 30' 00"
 R = 881.47'
 L = 207.90'
 T = 408.35'
 E = 24.19'
 C = 404.70'
 C.B. = N 69° 42' 15" E

CURVE 27
 P.I. STA. 20+70.47
 Δ = 26° 32' 33" (RT.)
 Dc = 6° 30' 00"
 R = 881.47'
 L = 207.90'
 T = 408.35'
 E = 24.19'
 C = 404.70'
 C.B. = N 69° 42' 15" E

CURVE SR25(SB)-3
 P.I. STA. 35+94.45
 Δ = 54°12'32" (RT.)
 Dc = 5° 36'53"
 R = 1020.45'
 L = 522.29'
 T = 965.47'
 E = 125.89'
 C = 929.86'
 C.B. = N 61°10'47" E

CURVE 5B
 P.I. STA. 39+24.17
 Δ = 14° 30' 11" (RT.)
 Dc = 2° 00' 00"
 R = 1145.92'
 L = 145.81'
 T = 290.06'
 E = 9.24'
 C = 289.29'
 C.B. = N 60° 31' 19" E

CURVE 26
 P.I. STA. 16+00.42
 Δ = 10° 30' 36" (RT.)
 Dc = 6° 30' 00"
 R = 881.47'
 L = 207.90'
 T = 408.35'
 E = 24.19'
 C = 404.70'
 C.B. = N 69° 42' 15" E

CURVE 27
 P.I. STA. 20+70.47
 Δ = 26° 32' 33" (RT.)
 Dc = 6° 30' 00"
 R = 881.47'
 L = 207.90'
 T = 408.35'
 E = 24.19'
 C = 404.70'
 C.B. = N 69° 42' 15" E

CURVE SR25(SB)-3
 P.I. STA. 35+94.45
 Δ = 54°12'32" (RT.)
 Dc = 5° 36'53"
 R = 1020.45'
 L = 522.29'
 T = 965.47'
 E = 125.89'
 C = 929.86'
 C.B. = N 61°10'47" E

CURVE 5B
 P.I. STA. 39+24.17
 Δ = 14° 30' 11" (RT.)
 Dc = 2° 00' 00"
 R = 1145.92'
 L = 145.81'
 T = 290.06'
 E = 9.24'
 C = 289.29'
 C.B. = N 60° 31' 19" E

CURVE 26
 P.I. STA. 16+00.42
 Δ = 10° 30' 36" (RT.)
 Dc = 6° 30' 00"
 R = 881.47'
 L = 207.90'
 T = 408.35'
 E = 24.19'
 C = 404.70'
 C.B. = N 69° 42' 15" E

CURVE 27
 P.I. STA. 20+70.47
 Δ = 26° 32' 33" (RT.)
 Dc = 6° 30' 00"
 R = 881.47'
 L = 207.90'
 T = 408.35'
 E = 24.19'
 C = 404.70'
 C.B. = N 69° 42' 15" E

CURVE SR25(SB)-3
 P.I. STA. 35+94.45
 Δ = 54°12'32" (RT.)
 Dc = 5° 36'53"
 R = 1020.45'
 L = 522.29'
 T = 965.47'
 E = 125.89'
 C = 929.86'
 C.B. = N 61°10'47" E

CURVE 5B
 P.I. STA. 39+24.17
 Δ = 14° 30' 11" (RT.)
 Dc = 2° 00' 00"
 R = 1145.92'
 L = 145.81'
 T = 290.06'
 E = 9.24'
 C = 289.29'
 C.B. = N 60° 31' 19" E

CURVE 26
 P.I. STA. 16+00.42
 Δ = 10° 30' 36" (RT.)
 Dc = 6° 30' 00"
 R = 881.47'
 L = 207.90'
 T = 408.35'
 E = 24.19'
 C = 404.70'
 C.B. = N 69° 42' 15" E

CURVE 27
 P.I. STA. 20+70.47
 Δ = 26° 32' 33" (RT.)
 Dc = 6° 30' 00"
 R = 881.47'
 L = 207.90'
 T = 408.35'
 E = 24.19'
 C = 404.70'
 C.B. = N 69° 42' 15" E

CURVE SR25(SB)-3
 P.I. STA. 35+94.45
 Δ = 54°12'32" (RT.)
 Dc = 5° 36'53"
 R = 1020.45'
 L = 522.29'
 T = 965.47'
 E = 125.89'
 C = 929.86'
 C.B. = N 61°10'47" E

CURVE 5B
 P.I. STA. 39+24.17
 Δ = 14° 30' 11" (RT.)
 Dc = 2° 00' 00"
 R = 1145.92'
 L = 145.81'
 T = 290.06'
 E = 9.24'
 C = 289.29'
 C.B. = N 60° 31' 19" E

CURVE 26
 P.I. STA. 16+00.42
 Δ = 10° 30' 36" (RT.)
 Dc = 6° 30' 00"
 R = 881.47'
 L = 207.90'
 T = 408.35'
 E = 24.19'
 C = 404.70'
 C.B. = N 69° 42' 15" E

CURVE 27
 P.I. STA. 20+70.47
 Δ = 26° 32' 33" (RT.)
 Dc = 6° 30' 00"
 R = 881.47'
 L = 207.90'
 T = 408.35'
 E = 24.19'
 C = 404.70'
 C.B. = N 69° 42' 15" E

CURVE SR25(SB)-3
 P.I. STA. 35+94.45
 Δ = 54°12'32" (RT.)
 Dc = 5° 36'53"
 R = 1020.45'
 L = 522.29'
 T = 965.47'
 E = 125.89'
 C = 929.86'
 C.B. = N 61°10'47" E

CURVE 5B
 P.I. STA. 39+24.17
 Δ = 14° 30' 11" (RT.)
 Dc = 2° 00' 00"
 R = 1145.92'
 L = 145.81'
 T = 290.06'
 E = 9.24'
 C = 289.29'
 C.B. = N 60° 31' 19" E

CURVE 26
 P.I. STA. 16+00.42
 Δ = 10° 30' 36" (RT.)
 Dc = 6° 30' 00"
 R = 881.47'
 L = 207.90'
 T = 408.35'
 E = 24.19'
 C = 404.70'
 C.B. = N 69° 42' 15" E

CURVE 27
 P.I. STA. 20+70.47
 Δ = 26° 32' 33" (RT.)
 Dc = 6° 30' 00"
 R = 881.47'
 L = 207.90'
 T = 408.35'
 E = 24.19'
 C = 404.70'
 C.B. = N 69° 42' 15" E

CURVE SR25(SB)-3
 P.I. STA. 35+94.45
 Δ = 54°12'32" (RT.)
 Dc = 5° 36'53"
 R = 1020.45'
 L = 522.29'
 T = 965.47'
 E = 125.89'
 C = 929.86'
 C.B. = N 61°10'47" E

CURVE 5B
 P.I. STA. 39+24.17
 Δ = 14° 30' 11" (RT.)
 Dc = 2° 00' 00"
 R = 1145.92'
 L = 145.81'
 T = 290.06'
 E = 9.24'
 C = 289.29'
 C.B. = N 60° 31' 19" E

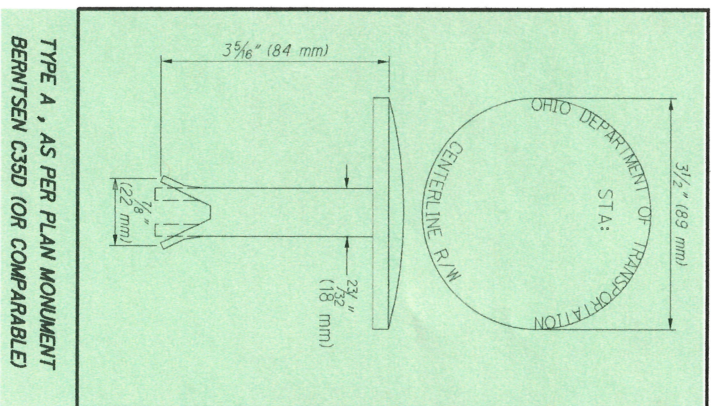
CURVE 26
 P.I. STA. 16+00.42
 Δ = 10° 30' 36" (RT.)
 Dc = 6° 30' 00"
 R = 881.47'
 L = 207.90'
 T = 408.35'
 E = 24.19'
 C = 404.70'
 C.B. = N 69° 42' 15" E

CURVE 27
 P.I. STA. 20+70.47
 Δ = 26° 32' 33" (RT.)
 Dc = 6° 30' 00"
 R = 881.47'
 L = 207.90'
 T = 408.35'
 E = 24.19'
 C = 404.70'
 C.B. = N 69° 42' 15" E

CURVE SR25(SB)-3
 P.I. STA. 35+94.45
 Δ = 54°12'32" (RT.)
 Dc = 5° 36'53"
 R = 1020.45'
 L = 522.29'
 T = 965.47'
 E = 125.89'
 C = 929.86'
 C.B. = N 61°10'47" E

CURVE 5B
 P.I. STA. 39+24.17
 Δ = 14° 30' 11" (RT.)
 Dc = 2° 00' 00"
 R = 1145.92'
 L = 145.81'
 T = 290.06'
 E = 9.24'
 C = 289.29'
 C.B. = N 60° 31' 19" E

PROPOSED MONUMENTATION



NON-PERFORM - REVISED JOB LIMIT DUE TO JOB E-108 JOB D MEDIAN BARRIER BEGIN CONSTRUCTION AT STA. 64+75.

REF	STATION		OFFSET	DESCRIPTION	GRID COORDINATES		GROUND COORDINATES	
	CL	R/W			NORTHING	EASTING	NORTHING	EASTING
I-75 CENTERLINE								
A	522+75.07		0.00	NO MONUMENT SET	717859.276	1683597.300	717882.846	1683652.580
C	527+75.07		0.00	NO MONUMENT SET	718358.779	1683584.613	718382.365	1683639.892
D	64+23.39		0.00	TYPE "A" AS PER PLAN	719018.862	1683401.550	719042.470	1683456.823
E	65+00.00		0.00	TYPE "A" AS PER PLAN	719087.703	1683367.950	719111.313	1683423.222
F	67+16.76		0.00	TYPE "A" AS PER PLAN	719275.241	1683259.457	719298.858	1683314.725
G	72+16.76		0.00	NO MONUMENT SET	719671.045	1682954.494	719694.675	1683009.752
H	80+00.00		0.00	TYPE "A" AS PER PLAN	720271.850	1682452.048	720295.500	1682507.290
I	80+60.90		0.00	TYPE "A" AS PER PLAN	720318.566	1682412.980	720342.217	1682468.221
J	85+00.00		0.00	TYPE "A" AS PER PLAN	720663.786	1682141.923	720687.449	1682197.155
K	85+60.90		0.00	TYPE "A" AS PER PLAN	720714.371	1682108.017	720738.035	1682163.247
L	90+00.00		0.00	NO MONUMENT SET	721104.900	1681909.095	721128.577	1681964.319
M	95+00.00		0.00	NO MONUMENT SET	721588.699	1681787.752	721612.392	1681842.972
N	95+87.60		0.00	NO MONUMENT SET	721675.807	1681778.596	721699.503	1681833.815
O	100+00.00		0.00	NO MONUMENT SET	722087.927	1681773.672	722111.636	1681828.892
P	100+87.60		0.00	NO MONUMENT SET	722175.467	1681776.742	722199.179	1681831.962
Q	110+00.00		0.00	TYPE "A" AS PER PLAN	723087.240	1681809.838	723110.982	1681865.059
R	115+00.00		0.00	TYPE "A" AS PER PLAN	723586.894	1681827.975	723610.653	1681883.196
S	116+67.84		0.00	TYPE "A" AS PER PLAN	723754.616	1681834.063	723778.380	1681889.285
T	120+00.00		0.00	TYPE "A" AS PER PLAN	724086.669	1681840.191	724110.444	1681895.413
U	122+97.84		0.00	TYPE "A" AS PER PLAN	724383.316	1681816.557	724407.101	1681871.778
V	125+00.00		0.00	TYPE "A" AS PER PLAN	724580.566	1681772.885	724604.357	1681828.105
W	130+00.00		0.00	TYPE "A" AS PER PLAN	725032.781	1681564.203	725056.586	1681619.415
X	132+43.31		0.00	TYPE "A" AS PER PLAN	725224.899	1681415.290	725248.711	1681470.497
Y	138+73.31		0.00	TYPE "A" AS PER PLAN	725634.294	1680937.832	725658.119	1680993.024
Z	141+21.64		0.00	TYPE "A" AS PER PLAN	725783.525	1680739.345	725807.356	1680794.530
EMERALD AVE.								
AA	80+24.32		434.72' LT	MONUMENT ASSEMBLY	720011.635	1682102.982	720035.276	1682158.212
BB	79+96.99		403.12' LT	MONUMENT ASSEMBLY	720010.937	1682144.752	720034.578	1682199.984
CC	78+91.11		307.26' LT	MONUMENT ASSEMBLY	719991.216	1682286.203	720014.856	1682341.439
DD	77+81.66		230.12' LT	MONUMENT ASSEMBLY	719956.747	1682415.591	719980.386	1682470.832
EE	76+59.31		113.33' LT	MONUMENT ASSEMBLY	719937.809	1682583.665	719961.447	1682638.911
FF	76+18.93		13.67' LT	MONUMENT ASSEMBLY	719907.707	1682886.018	719994.410	1682741.267
GG	75+91.82		66.65' RT	MONUMENT ASSEMBLY	720001.499	1682765.024	720025.140	1682820.276
HH	73+97.27		389.92' RT	MONUMENT ASSEMBLY	720059.639	1683137.797	720083.281	1683193.061
DORR STREET								
VV	10+22.99		0.00	MONUMENT ASSEMBLY	725408.174	1680919.886	725431.992	1680975.077
REFERENCE MONUMENT, AS PER PLAN								
MONUMENT ASSEMBLY, TYPE C								

16-EA

NOTES
ALL EXISTING AND PROPOSED RIGHT OF WAY SHALL BE REFERENCED FROM THE PROPOSED CENTERLINE OF R/W AND CONSTRUCTION.

PROJECT CONTROL
STATE PLANE GRID NORTH ZONE ON NAD 83 (2011) ADJUSTMENT DATUM. PROJECT ADJUSTMENT FACTOR 1.000032834

BASIS FOR BEARINGS:
ALL BEARINGS SHOWN ARE FOR PROJECT USE ONLY. THE BEARINGS SHOWN ARE RELATIVE TO GRID NORTH OF THE OHIO STATE PLANE COORDINATES, NORTH ZONE NAD 83 (2007 ADJUSTMENT) DATUM.

SETTING OF ALL MONUMENTS SHALL BE PERFORMED BY A SURVEYOR REGISTERED IN THE STATE OF OHIO. THE MONUMENT ASSEMBLIES AND REFERENCE MONUMENTS WILL BE INSTALLED BY THE CONTRACTOR AT THE TIME OF CONSTRUCTION. THE IRON PIN AND CAP (WHEN REQUIRED) ARE TO BE INSTALLED BY THE CONTRACTOR'S SURVEYOR.

CHANGES OR ALTERATIONS TO THE LOCATION OF ANY MONUMENTS SHOWN IN THIS TABLE, REQUIRE PRIOR APPROVAL FROM THE DISTRICT REAL ESTATE ADMINISTRATOR OF THE OHIO DEPARTMENT OF TRANSPORTATION. IN THE EVENT THAT CHANGES OR ALTERATIONS ARE APPROVED, A REVISED CENTERLINE PLAT WITH THE NEW LOCATIONS SHALL BE RECORDED IN THE APPLICABLE COUNTY RECORDS AND THE OHIO DEPARTMENT OF TRANSPORTATION. SPECIFICATIONS FOR MONUMENT ASSEMBLIES, REFERENCE MONUMENTS AND RIGHT OF WAY MONUMENTS ARE SHOWN ON STANDARD CONSTRUCTION DRAWING RM-1.1.

MONUMENT BOX TYPE C: MONUMENT BOX ASSEMBLY SHALL BE CONSTRUCTED IN ACCORDANCE WITH DETAILS AS SHOWN PER O.D.O.T. STANDARD CONSTRUCTION DRAWING RM-1.1.

** THIS PLAT REPLACES THE PLAT INSTRUMENT # 20150417-0014652.

RECEIVED _____, 20____
RECORDED MAY 20, 2016
INSTR. NO. = 20160520-0019227
COUNTY RECORDER

O.D.O.T. DISTRICT 2 SURVEY OFFICE (USE ONLY)

PERSONNEL _____

REFERENCE NO. _____

SHEET 1 OF 20

NOTES _____ DATE 7/31/70

ROUTE I-75

H.C. _____ WEATHER _____

COUNTY LUCAS

R.C. _____ TEMP. _____

TOWNSHIP CITY OF TOLEDO

SECTION 27

DWG BY NIESE PID _____

T 9 S R 7 E

TYPE MONUMENT _____

ON SURFACE - BELOW _____ ON _____

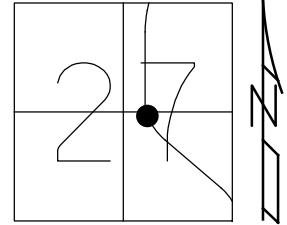
OFFSET C PAVEMENT _____ LT : RT

_____ TO _____ EDGE PAVEMENT

STATION: 236+40.83

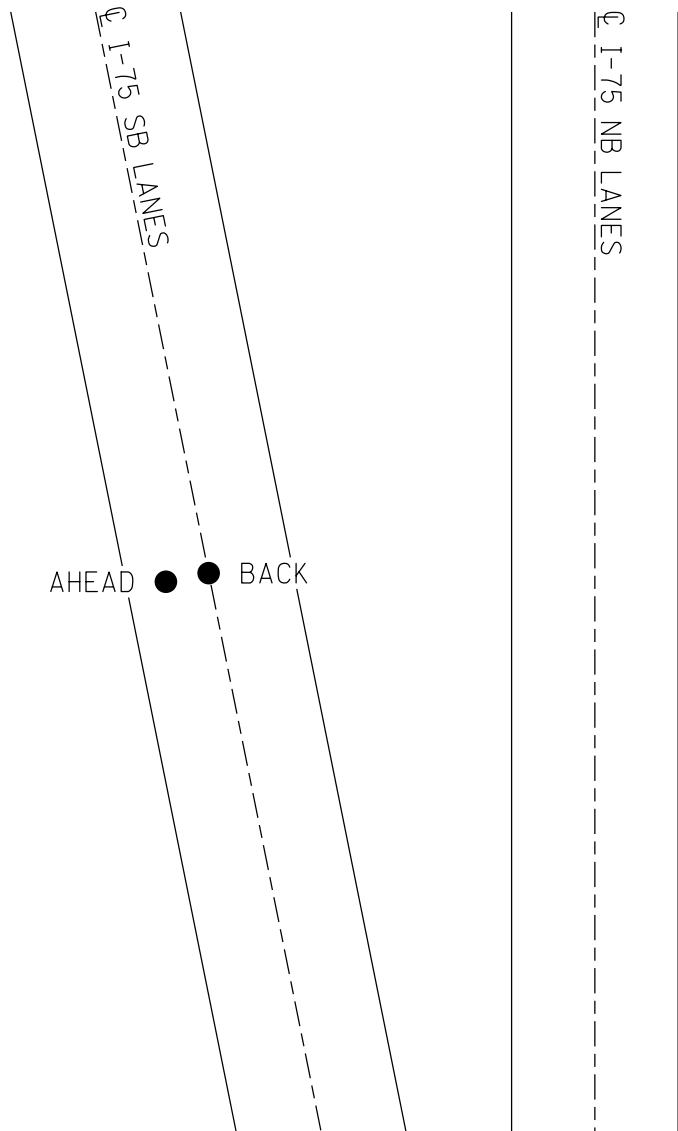
HORIZ.DATUM: _____ GEOID: _____

GRID: NORTHING: _____ EASTING: _____



RECORD: P.T.
 STA 236+40.83 BACK
 7/31/70, NPB
 I-75 C R/W SB ALIGNMENT
 PID 77254
 4/24/20

DIST. FROM STA
 AHEAD TO BACK=13.00'



O.D.O.T. DISTRICT 2 SURVEY OFFICE (USE ONLY)

PERSONNEL _____

REFERENCE NO. _____

SHEET 2 OF 20

NOTES _____ DATE 7/31/70

ROUTE I-75

H.C. _____ WEATHER _____

COUNTY LUCAS

R.C. _____ TEMP. _____

TOWNSHIP CITY OF TOLEDO

DWG BY NIESE PID _____

SECTION 27

T 9 S R 7 E

TYPE MONUMENT _____

ON SURFACE - BELOW _____ ON _____

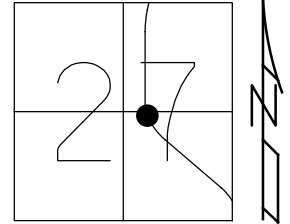
OFFSET $\text{\textcircled{C}}$ PAVEMENT _____ LT : RT

_____ TO _____ EDGE PAVEMENT

STATION: 236+40.83

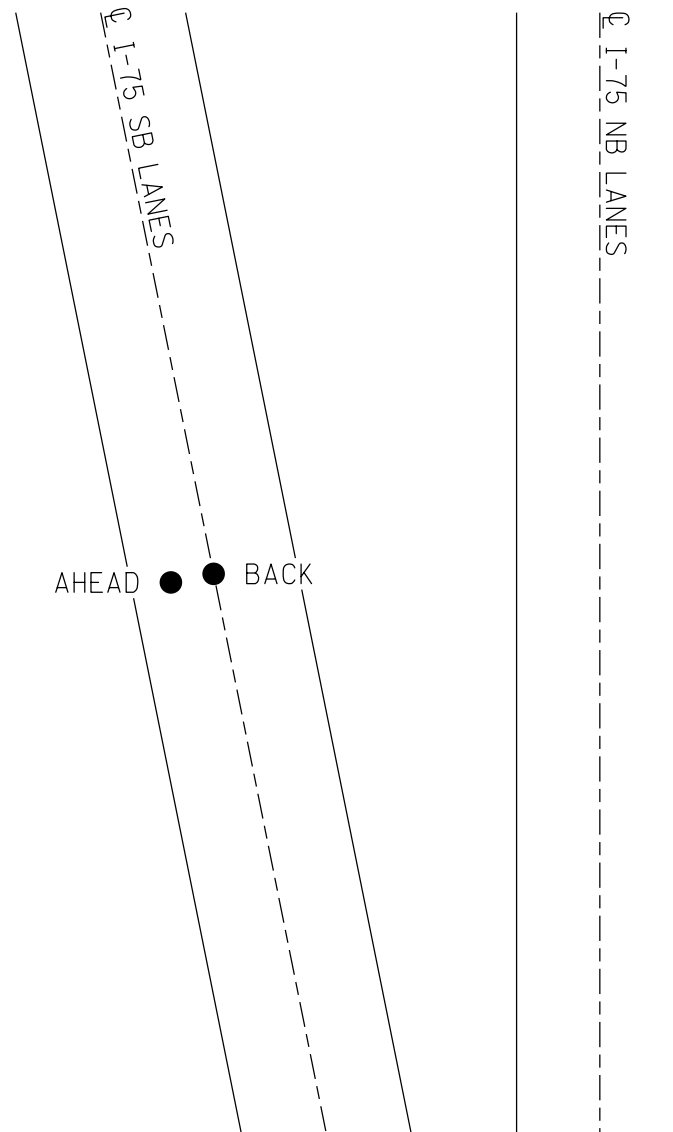
HORZ. DATUM: _____ GEOID: _____

GRID: NORTHING: _____ EASTING: _____



RECORD: P.T.
STA 236+40.83 AHEAD
7/31/70, NPB
I-75 $\text{\textcircled{C}}$ R/W SB ALIGNMENT
PID 77254
4/24/20

DIST. FROM STA
AHEAD TO BACK=13.00'



O.D.O.T. DISTRICT 2 SURVEY OFFICE (USE ONLY)

PERSONNEL _____

REFERENCE NO. _____

SHEET 3 OF 20

NOTES _____

DATE 7/31/70

ROUTE I-75

H.C. _____

WEATHER _____

COUNTY LUCAS

R.C. _____

TEMP. _____

TOWNSHIP CITY OF TOLEDO

DWG BY NIESE PID _____

SECTION 27

T 9 S R 7 E

TYPE MONUMENT MONBOX

ON SURFACE - ~~BELOW~~ ON

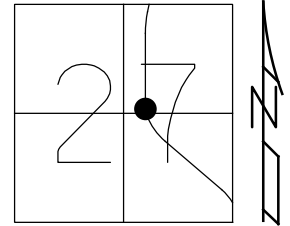
OFFSET \varnothing PAVEMENT _____ LT : ~~RT~~

- TO - EDGE PAVEMENT

STATION: 238+51.18

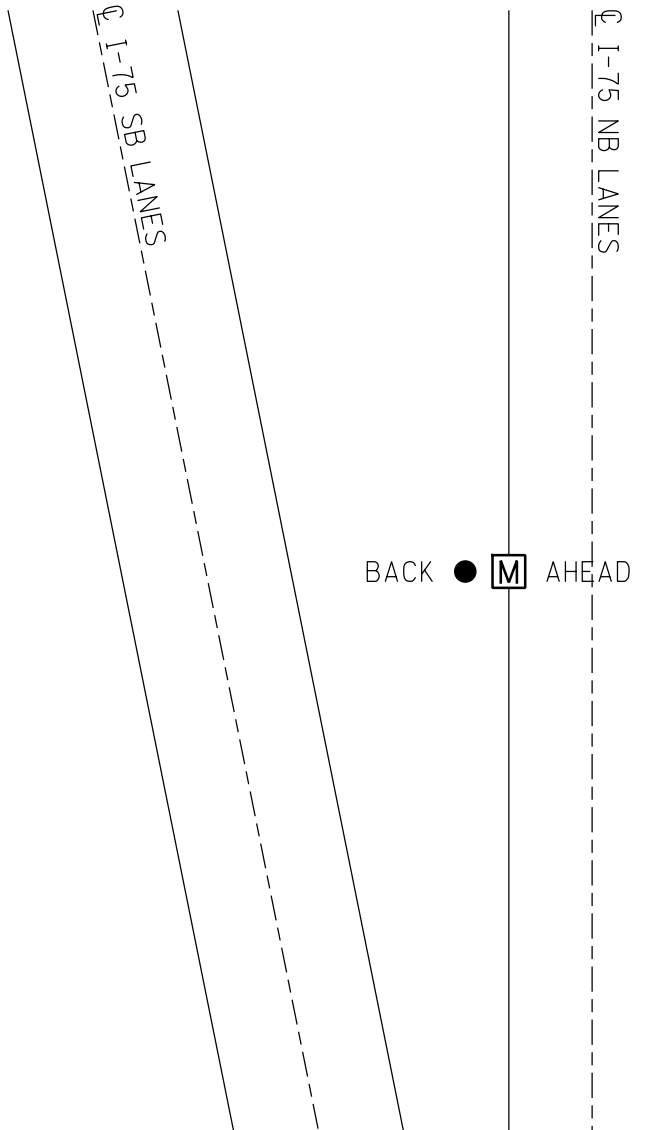
HORZ.DATUM: NAD83(ADJUSTED 1995) GEOID: _____

GRID: NORTHING: 732150.381 EASTING: 1675514.349



RECORD: P.T.
STA 238+51.19 BACK
7/31/70, NPB
PROPOSED CMON
I-75 \varnothing R/W NB ALIGNMENT
PID 77254
4/24/20

DIST. FROM STA
AHEAD TO BACK=13.00'



O.D.O.T. DISTRICT 2 SURVEY OFFICE (USE ONLY)

PERSONNEL _____

REFERENCE NO. _____

SHEET 4 OF 20

NOTES _____

DATE 7/31/70

ROUTE I-75

H.C. _____

WEATHER _____

COUNTY LUCAS

R.C. _____

TEMP. _____

TOWNSHIP CITY OF TOLEDO

SECTION 27

DWG BY NIESE PID _____

T 9 S R 7 E

TYPE MONUMENT MONBOX

ON SURFACE - ~~BELOW~~ ON

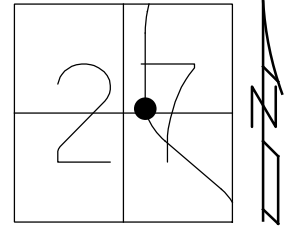
OFFSET \bar{C} PAVEMENT _____ LT : ~~RT~~

- TO - EDGE PAVEMENT

STATION: 238+51.18

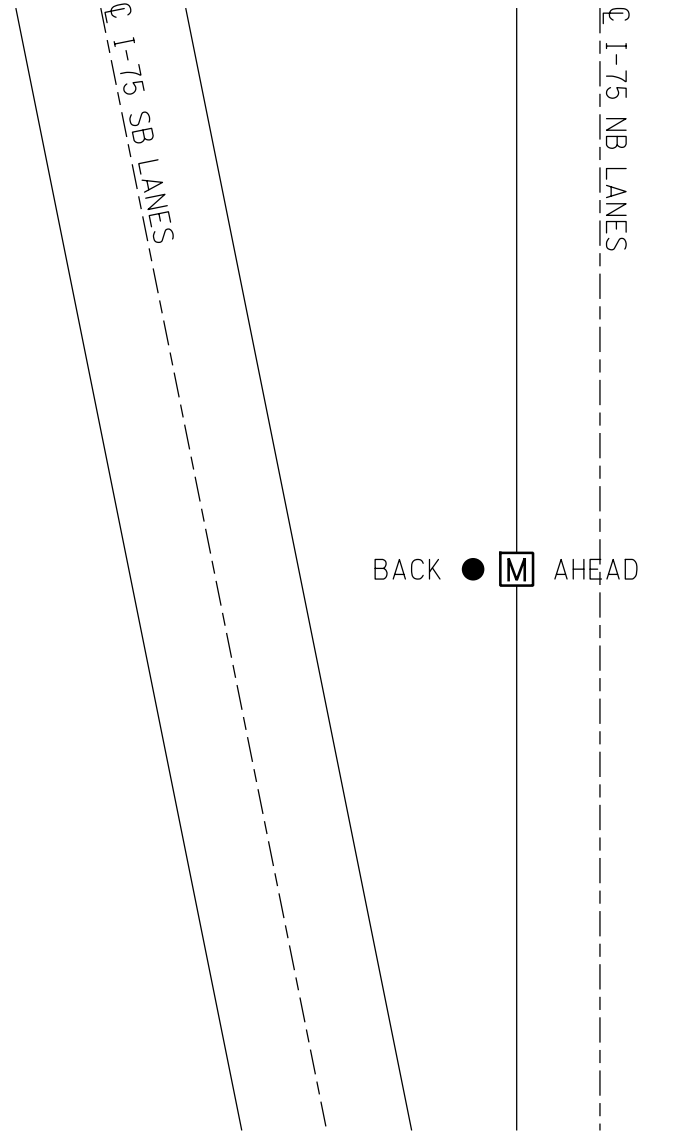
HORIZ. DATUM: NAD83(ADJUSTED 1995) GEOID: _____

GRID: NORTHING: 732150.852 EASTING: 1675527.340



RECORD: P.T.
 STA 238+51.19 AHEAD
 7/31/70, NPB
 PROPOSED MONBOX
 I-75 \bar{C} R/W NB ALIGNMENT
 PID 77254
 4/24/20

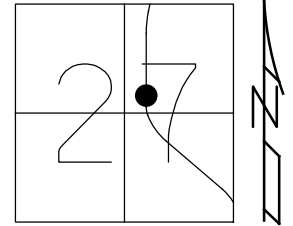
DIST. FROM STA
 AHEAD TO BACK=13.00'



O.D.O.T. DISTRICT 2 SURVEY OFFICE (USE ONLY)

PERSONNEL _____ REFERENCE NO. _____ SHEET 5 OF 20
NOTES _____ DATE 7/31/70 ROUTE I-75
H.C. _____ WEATHER _____ COUNTY LUCAS
R.C. _____ TEMP. _____ TOWNSHIP CITY OF TOLEDO
SECTION 27
DWG BY NIESE PID _____ T 9 S R 7 E

TYPE MONUMENT MONBOX
ON SURFACE - ~~BELOW~~ ON
OFFSET Q PAVEMENT _____ LT : ~~RT~~
- TO - EDGE PAVEMENT
STATION: 241+88.07

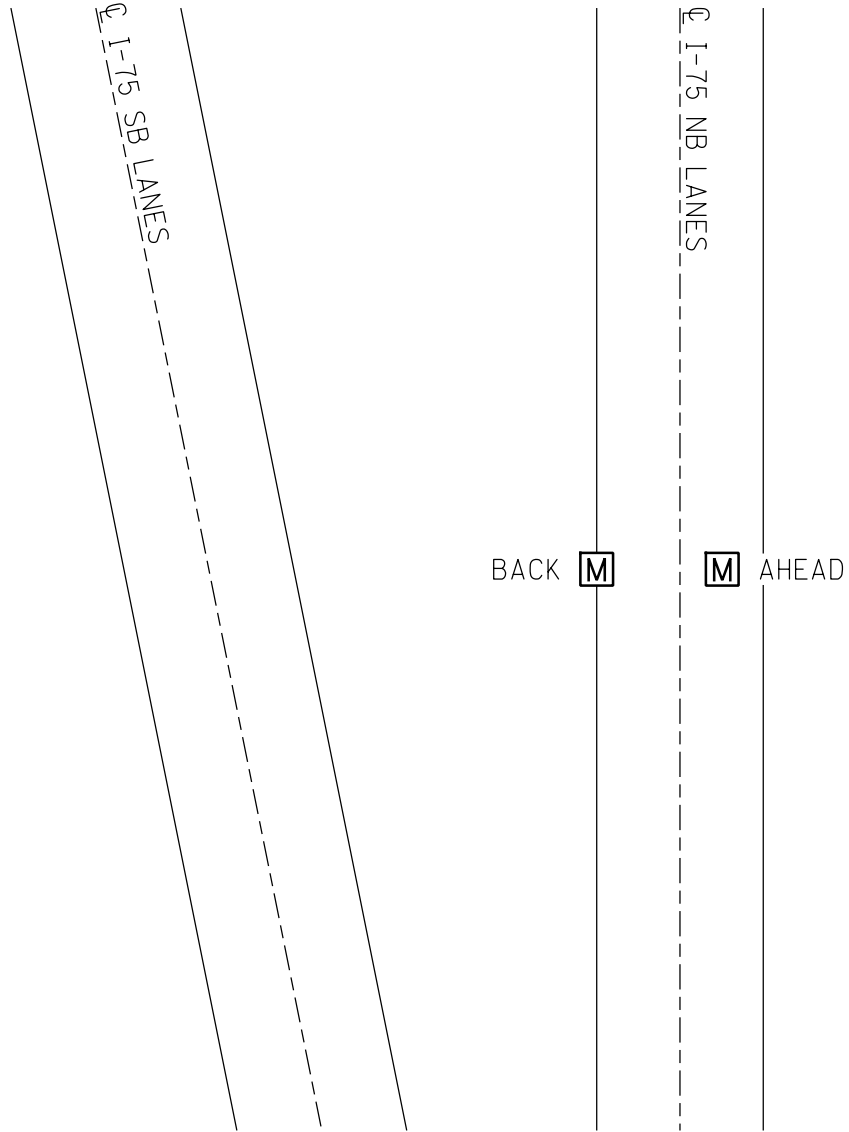


HORIZ. DATUM: NAD83 (ADJUSTED 1995) GEOID: _____

GRID: NORTHING: 732489.593 EASTING: 1675517.072

RECORD:
STA 241+88.07 BACK
7/31/70, NPB
PROPOSED MONBOX
I-75 Q R/W NB ALIGNMENT
PID 77254
4/24/20

DIST. FROM STA
AHEAD TO BACK=48.00'



O.D.O.T. DISTRICT 2 SURVEY OFFICE (USE ONLY)

PERSONNEL _____

REFERENCE NO. _____

SHEET 6 OF 20

NOTES _____

DATE 7/31/70

ROUTE I-75

H.C. _____

WEATHER _____

COUNTY LUCAS

R.C. _____

TEMP. _____

TOWNSHIP CITY OF TOLEDO

DWG BY NIESE

PID _____

SECTION 27

T 9 S R 7 E

TYPE MONUMENT MONBOX

ON SURFACE - ~~BELOW~~ ON

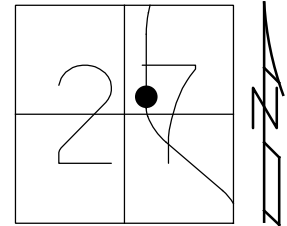
OFFSET C PAVEMENT _____ L : R T

- TO - EDGE PAVEMENT

STATION: 241+88.09

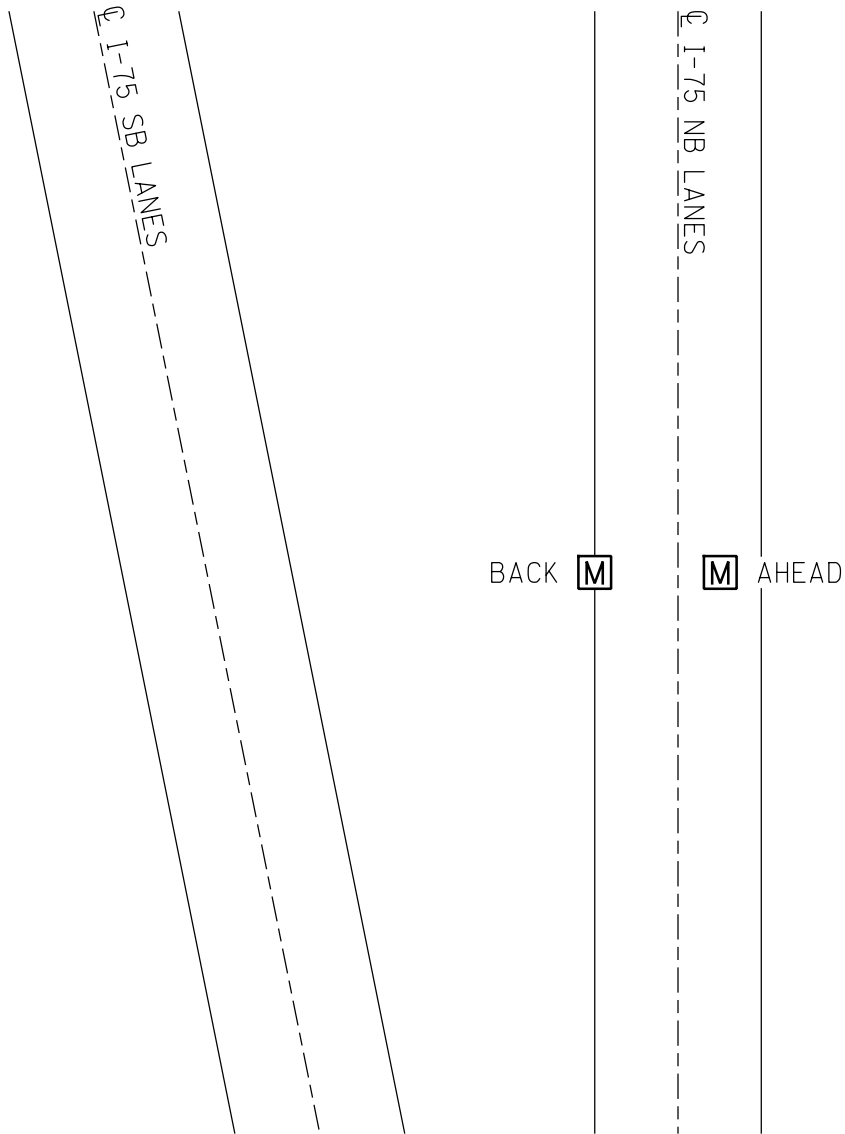
HORZ.DATUM: NAD83(ADJUSTED 1995) GEOID: _____

GRID: NORTHING: 732489.261 EASTING: 1675563.098



RECORD:
PROPOSED MONBOX
STA 241+88.09 AHEAD
I-75 C R/W NB ALIGNMENT
PID 77254
4/24/20

DIST. FROM STA
AHEAD TO BACK=48.00'



O.D.O.T. DISTRICT 2 SURVEY OFFICE (USE ONLY)

PERSONNEL _____

REFERENCE NO. _____

SHEET 7 OF 20

NOTES _____

DATE 7/31/70

ROUTE I-75

H.C. _____

WEATHER _____

COUNTY LUCAS

R.C. _____

TEMP. _____

TOWNSHIP CITY OF TOLEDO

DWG BY NIESE PID _____

SECTION 27

T 9 S R 7 E

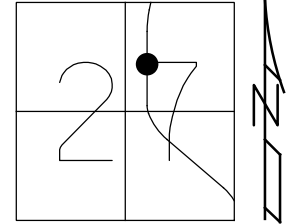
TYPE MONUMENT MONBOX

ON SURFACE - ~~BELOW~~ ON

OFFSET \varnothing PAVEMENT _____ LT : RT

- TO - EDGE PAVEMENT

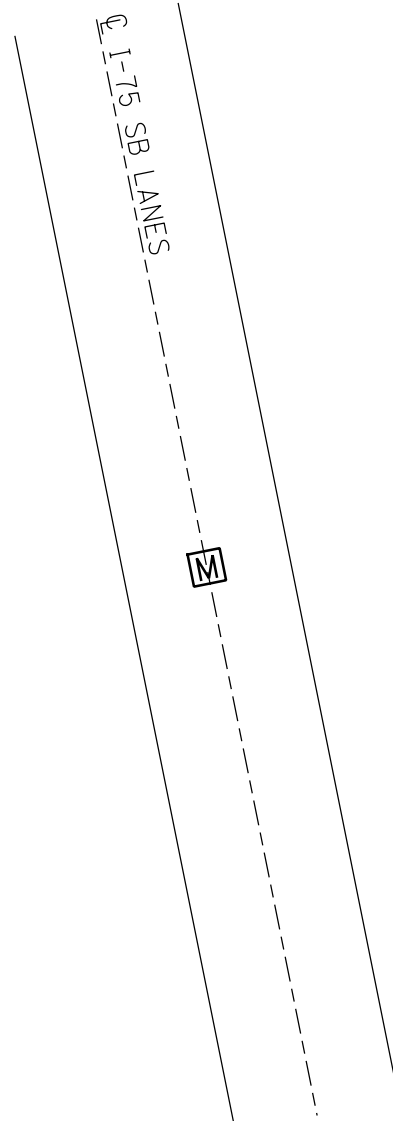
STATION: 248+62.89



HORIZ.DATUM: NAD83(ADJUSTED 1995) GEOID: _____

GRID: NORTHING: 733124.773 EASTING: 1675225.828

RECORD: P.C.
STA 248+62.89
7/31/70, NPB
I-75 \varnothing R/W SB ALIGNMENT
PID 77254
4/24/20



O.D.O.T. DISTRICT 2 SURVEY OFFICE (USE ONLY)

PERSONNEL

REFERENCE NO. _____

SHEET 8 OF 20

NOTES TOMSIK

DATE 11/9/72

ROUTE I-75

H.C. NEUSER

WEATHER _____

COUNTY LUCAS

R.C. VANYO

TEMP. _____

TOWNSHIP CITY OF TOLEDO

GRANATA

SECTION 27

DWG BY NIESE PID _____

T 9 S R 7 E

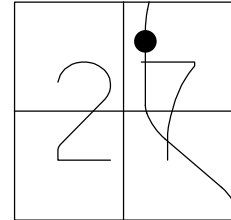
TYPE MONUMENT MONBOX

ON SURFACE - ~~BELOW~~ ON

OFFSET 0 PAVEMENT _____ ~~LT~~ : RT

- TO - EDGE PAVEMENT

STATION: 254+07



HORIZ.DATUM: NAD83(ADJUSTED 1995) GEOID: _____

GRID: NORTHING: 733707.372 EASTING: 1675518.915

RECORD: P.C.
REFERENCE CONTROL POINT
SET BY PIERCE SURVEY
11/9/72, TOMSIK
MONBOX SET BY OTHERS
I-75 0 R/W NB ALIGNMENT
PID 77254
4/24/20

0 NB I-75

M

O.D.O.T. DISTRICT 2 SURVEY OFFICE (USE ONLY)

PERSONNEL _____

REFERENCE NO. _____

SHEET 9 OF 20

NOTES TOMSIK DATE 11/9/72

ROUTE I-75

H.C. NEUSER WEATHER _____

COUNTY LUCAS

R.C. VANYO TEMP. _____

TOWNSHIP CITY OF TOLEDO

GRANATA

SECTION 27

DWG BY NIESE PID _____

T 9 S R 7 E

TYPE MONUMENT IPIN

ON SURFACE - BELOW ON

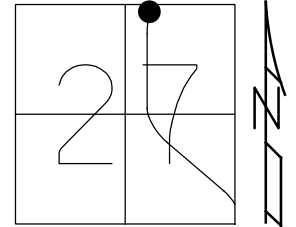
OFFSET CL PAVEMENT _____ LT : RT

- TO - EDGE PAVEMENT

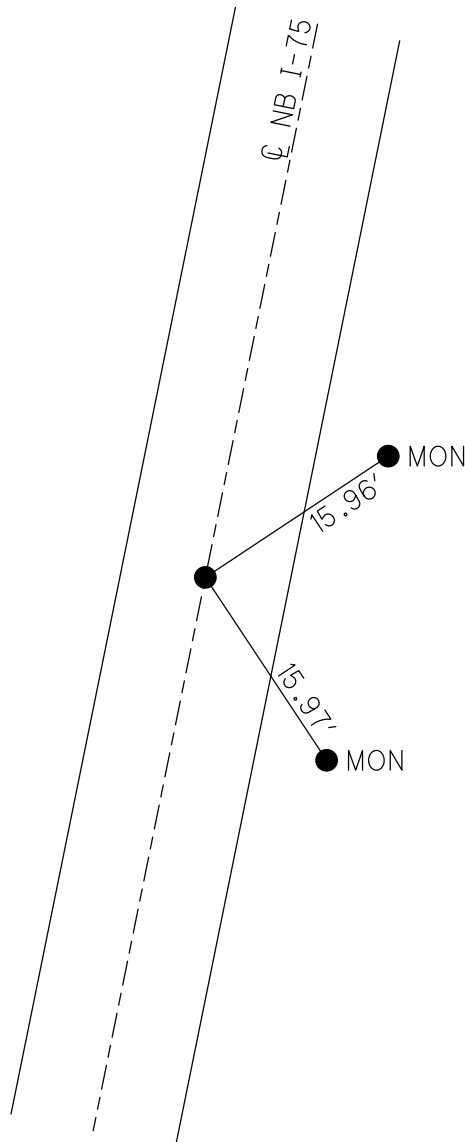
STATION: 262+00

HORZ.DATUM: _____ GEOID: _____

GRID: NORTHING: _____ EASTING: _____



RECORD:
REFERENCE CONTROL POINT
SET BY PIERCE SURVEY
11/9/72, TOMSIK



O.D.O.T. DISTRICT 2 SURVEY OFFICE (USE ONLY)

PERSONNEL

REFERENCE NO. _____

SHEET 10 OF 20

NOTES TOMSIC

DATE 11/9/72

ROUTE I-75

H.C. NEUSER

WEATHER _____

COUNTY LUCAS

R.C. VANYO

TEMP. _____

TOWNSHIP CITY OF TOLEDO

GRANATA

SECTION 22

DWG BY NIESE PID _____

T 9 S R 7 E

TYPE MONUMENT MONBOX

ON SURFACE - BELOW _____

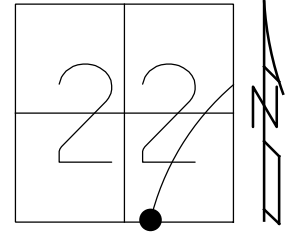
OFFSET \odot PAVEMENT _____ LT : RT

- TO - EDGE PAVEMENT

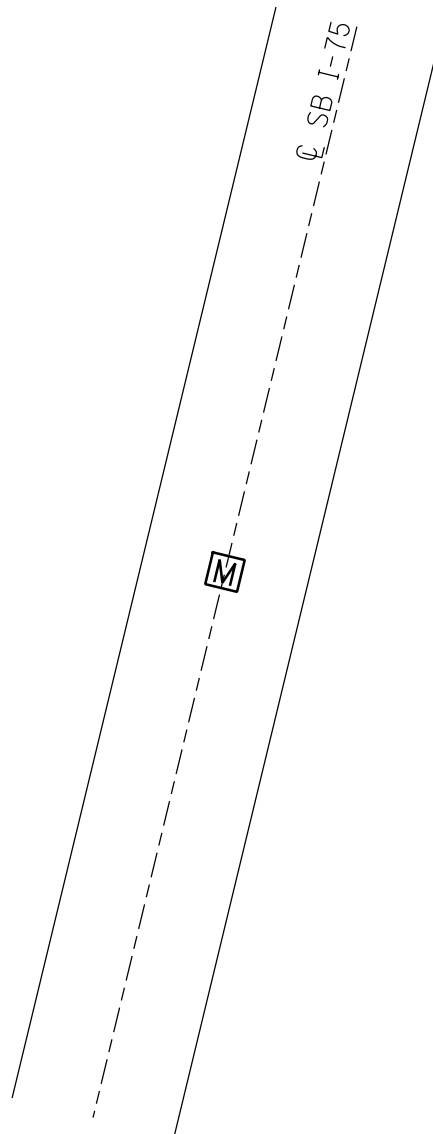
STATION: 264+65.85

HORZ.DATUM: NAD83(ADJUSTED 1995) GEOID: _____

GRID: NORTHING: 734705.714 EASTING: 1675293.340



RECORD: P.C.C.
REFERENCE CONTROL POINT
SET BY PIERCE SURVEY
11/9/72, TOMSIC
MONBOX SET BY OTHERS
I-75 \odot R/W SB ALIGNMENT
PID 77254
4/24/20



O.D.O.T. DISTRICT 2 SURVEY OFFICE (USE ONLY)

PERSONNEL

REFERENCE NO. _____

SHEET 11 OF 20

NOTES TOMSIC

DATE 11/9/72

ROUTE I-75

H.C. NEUSER

WEATHER _____

COUNTY LUCAS

R.C. VANYO

TEMP. _____

TOWNSHIP CITY OF TOLEDO

GRANATA

SECTION 22

DWG BY NIESE PID _____

T 9 S R 7 E

TYPE MONUMENT MONBOX

ON SURFACE - ~~BELOW~~ ON

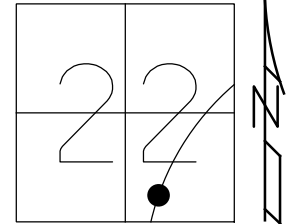
OFFSET Q PAVEMENT _____ LT : RT

- TO - EDGE PAVEMENT

STATION: 270+28.09

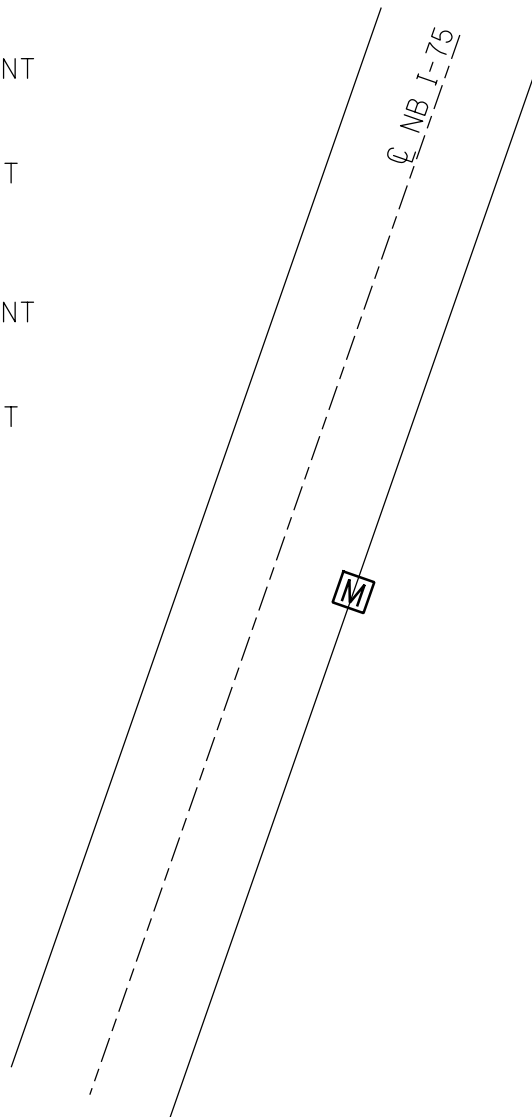
HORIZ.DATUM: NAD83(ADJUSTED 1995) GEOID: _____

GRID: NORTHING: 735291.487 EASTING: 1675800.541



RECORD: P.C.C.
REFERENCE CONTROL POINT
SET BY PIERCE SURVEY
11/9/72, TOMSIC
MONBOX SET BY OTHERS
I-75 Q R/W NB ALIGNMENT
PID 77254
4/24/20

RECORD: P.T.
REFERENCE CONTROL POINT
SET BY PIERCE SURVEY
11/9/72, TOMSIC
MONBOX SET BY OTHERS
I-75 Q R/W NB ALIGNMENT
PID 77254
4/24/20



O.D.O.T. DISTRICT 2 SURVEY OFFICE (USE ONLY)

PERSONNEL

REFERENCE NO. _____

SHEET 12 OF 20

NOTES TOMSIK

DATE 11/9/72

ROUTE I-75

H.C. NEUSER

WEATHER _____

COUNTY LUCAS

R.C. VANYO

TEMP. _____

TOWNSHIP CITY OF TOLEDO

GRANATA

SECTION 22

DWG BY NIESE PID _____

T 9 S R 7 E

TYPE MONUMENT MONBOX

ON SURFACE - BELOW _____

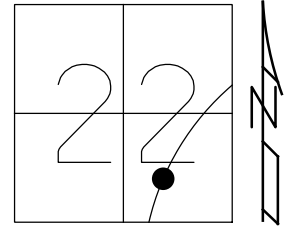
OFFSET C PAVEMENT _____ LT : RT

- TO - EDGE PAVEMENT

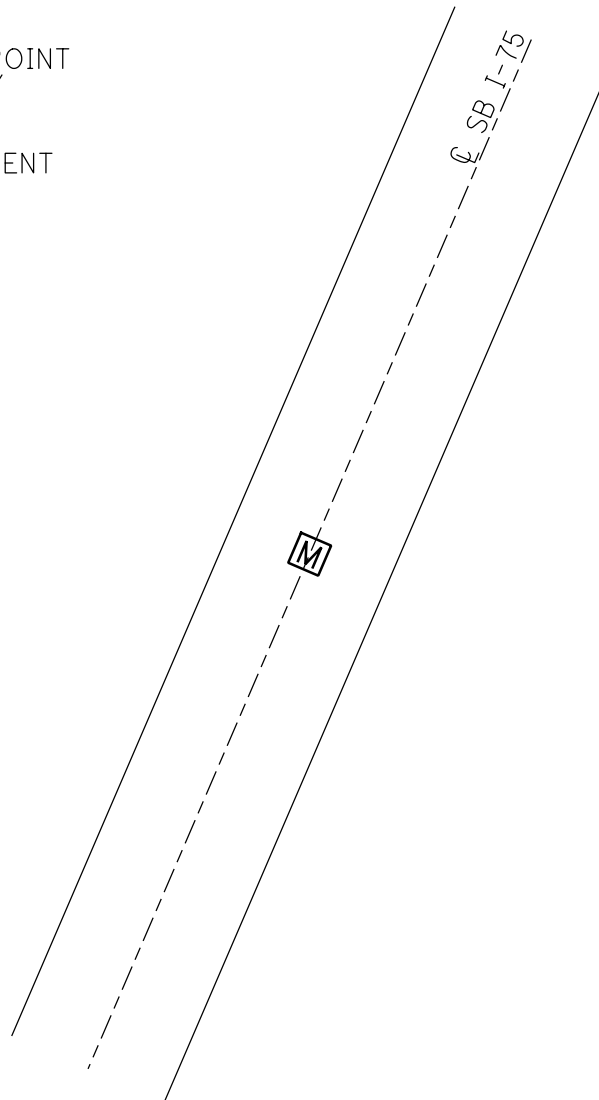
STATION: 275+00

HORIZ.DATUM: NAD83(ADJUSTED 1995) GEOID: _____

GRID: NORTHING: 735661.614 EASTING: 1675685.889



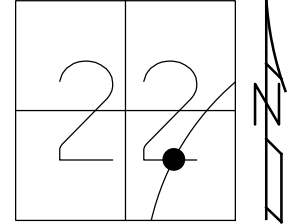
RECORD:
REFERENCE CONTROL POINT
SET BY PIERCE SURVEY
11/9/72, TOMSIK
PROPOSED MONBOX
I-75 C R/W SB ALIGNMENT
PID 77254
4/24/20



O.D.O.T. DISTRICT 2 SURVEY OFFICE (USE ONLY)

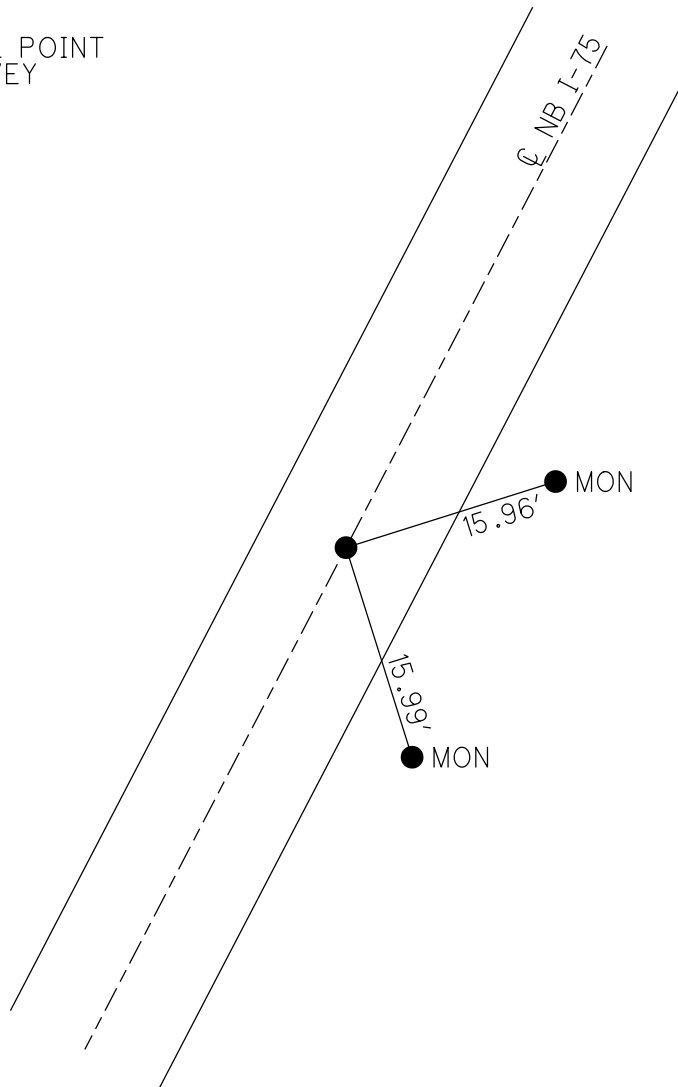
PERSONNEL _____ REFERENCE NO. _____ SHEET 13 OF 20
 NOTES TOMSIK DATE 11/9/72 ROUTE I-75
 H.C. NEUSER WEATHER _____ COUNTY LUCAS
 R.C. VANYO TEMP. _____ TOWNSHIP CITY OF TOLEDO
 GRANATA SECTION 22
 DWG BY NIESE PID _____ T 9 S R 7 E

TYPE MONUMENT IPIN
 ON SURFACE - BELOW _____ ON _____
 OFFSET \odot PAVEMENT _____ LT : RT _____
 _____ TO _____ EDGE PAVEMENT _____
 STATION: 279+00



HORZ.DATUM: _____ GEOID: _____
 GRID: NORTHING: _____ EASTING: _____

RECORD:
 REFERENCE CONTROL POINT
 SET BY PIERCE SURVEY
 11/9/72, TOMSIK



O.D.O.T. DISTRICT 2 SURVEY OFFICE (USE ONLY)

PERSONNEL

REFERENCE NO. _____

SHEET 14 OF 20

NOTES TOMSIC

DATE 11/9/72

ROUTE I-75

H.C. NEUSER

WEATHER _____

COUNTY LUCAS

R.C. VANYO

TEMP. _____

TOWNSHIP CITY OF TOLEDO

GRANATA

SECTION 22

DWG BY NIESE PID _____

T 9 S R 7 E

TYPE MONUMENT IPIN

ON SURFACE - BELOW ON

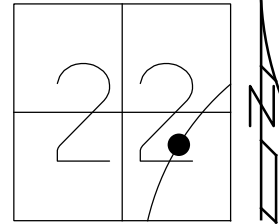
OFFSET \varnothing PAVEMENT _____ LT : RT

- TO - EDGE PAVEMENT

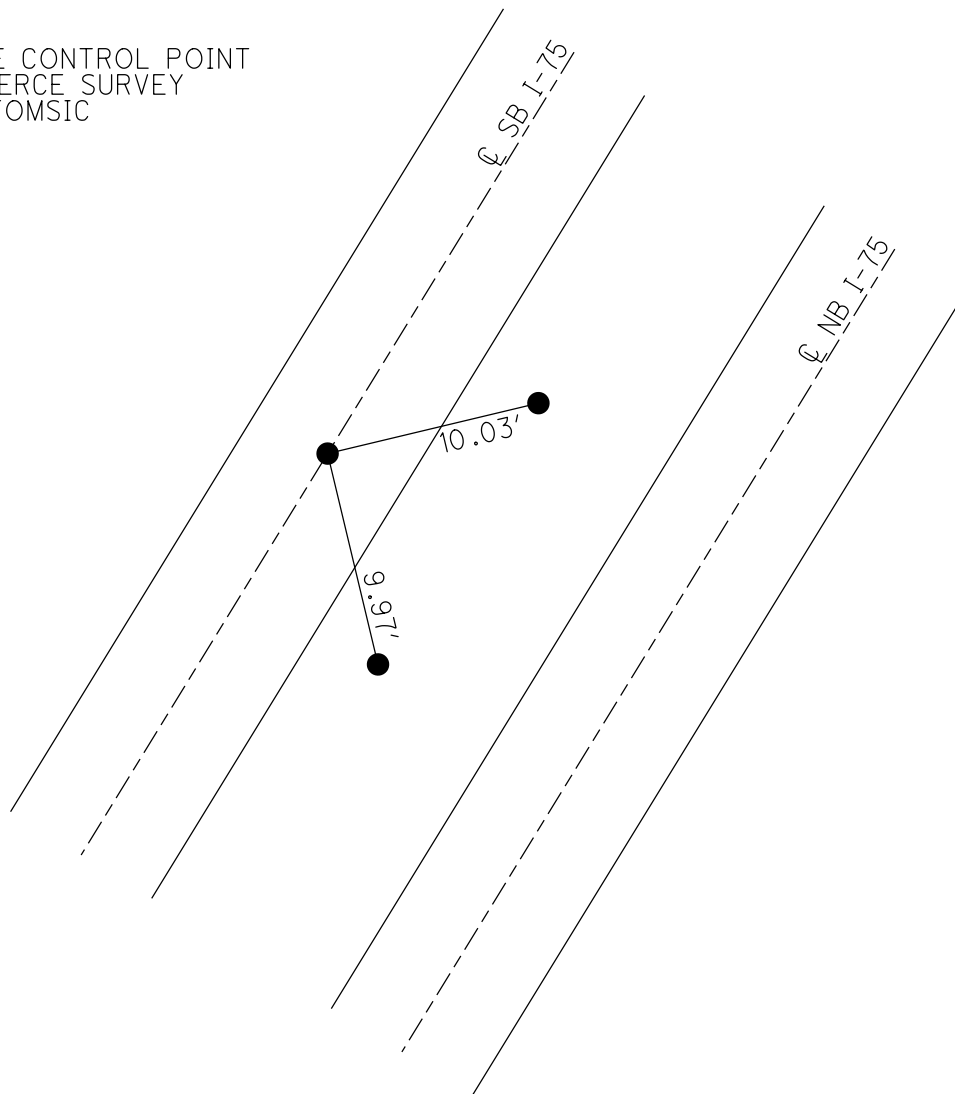
STATION: 284+00

HORIZ.DATUM: _____ GEOID: _____

GRID: NORTHING: _____ EASTING: _____



RECORD:
REFERENCE CONTROL POINT
SET BY PIERCE SURVEY
11/9/72, TOMSIC



O.D.O.T. DISTRICT 2 SURVEY OFFICE (USE ONLY)

PERSONNEL

REFERENCE NO. _____

SHEET 15 OF 20

NOTES TOMSIC

DATE 11/9/72

ROUTE I-75

H.C. NEUSER

WEATHER _____

COUNTY LUCAS

R.C. VANYO

TEMP. _____

TOWNSHIP CITY OF TOLEDO

GRANATA

SECTION 22

DWG BY NIESE PID _____

T 9 S R 7 E

TYPE MONUMENT MONBOX

ON SURFACE - ~~BELOW~~ ON

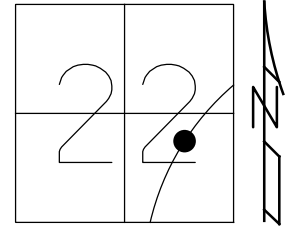
OFFSET \odot PAVEMENT _____ ~~LT~~ : RT

_____ TO _____ EDGE PAVEMENT

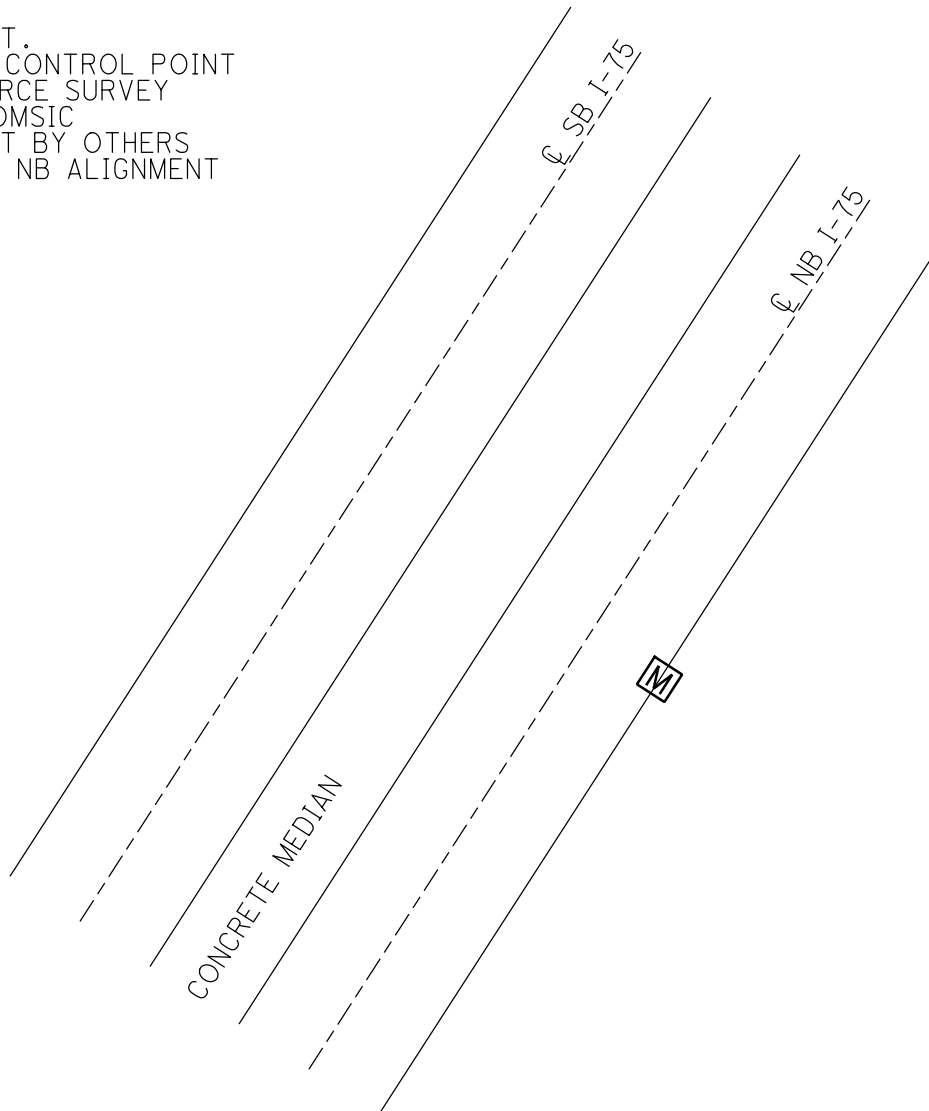
STATION: 284+97.43

HORZ. DATUM: NAD83(ADJUSTED 1995) GEOID: _____

GRID: NORTHING: 736589.838 EASTING: 1676483.608



RECORD: P.T.
 REFERENCE CONTROL POINT
 SET BY PIERCE SURVEY
 11/9/72, TOMSIC
 MONBOX SET BY OTHERS
 I-75 \odot R/W NB ALIGNMENT
 PID 77254
 4/24/20



O.D.O.T. DISTRICT 2 SURVEY OFFICE (USE ONLY)

PERSONNEL _____

REFERENCE NO. _____

SHEET 16 OF 20

NOTES TOMSIK

DATE 11/9/72

ROUTE I-75

H.C. NEUSER

WEATHER _____

COUNTY LUCAS

R.C. VANYO

TEMP. _____

TOWNSHIP CITY OF TOLEDO

GRANATA

SECTION 22

DWG BY NIESE

PID _____

T 9 S R 7 E

TYPE MONUMENT IPIN

ON SURFACE - BELOW ON

OFFSET \varnothing PAVEMENT _____ LT : RT

- TO - EDGE PAVEMENT

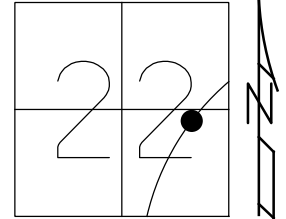
STATION: 289+68.50

HORZ.DATUM: _____

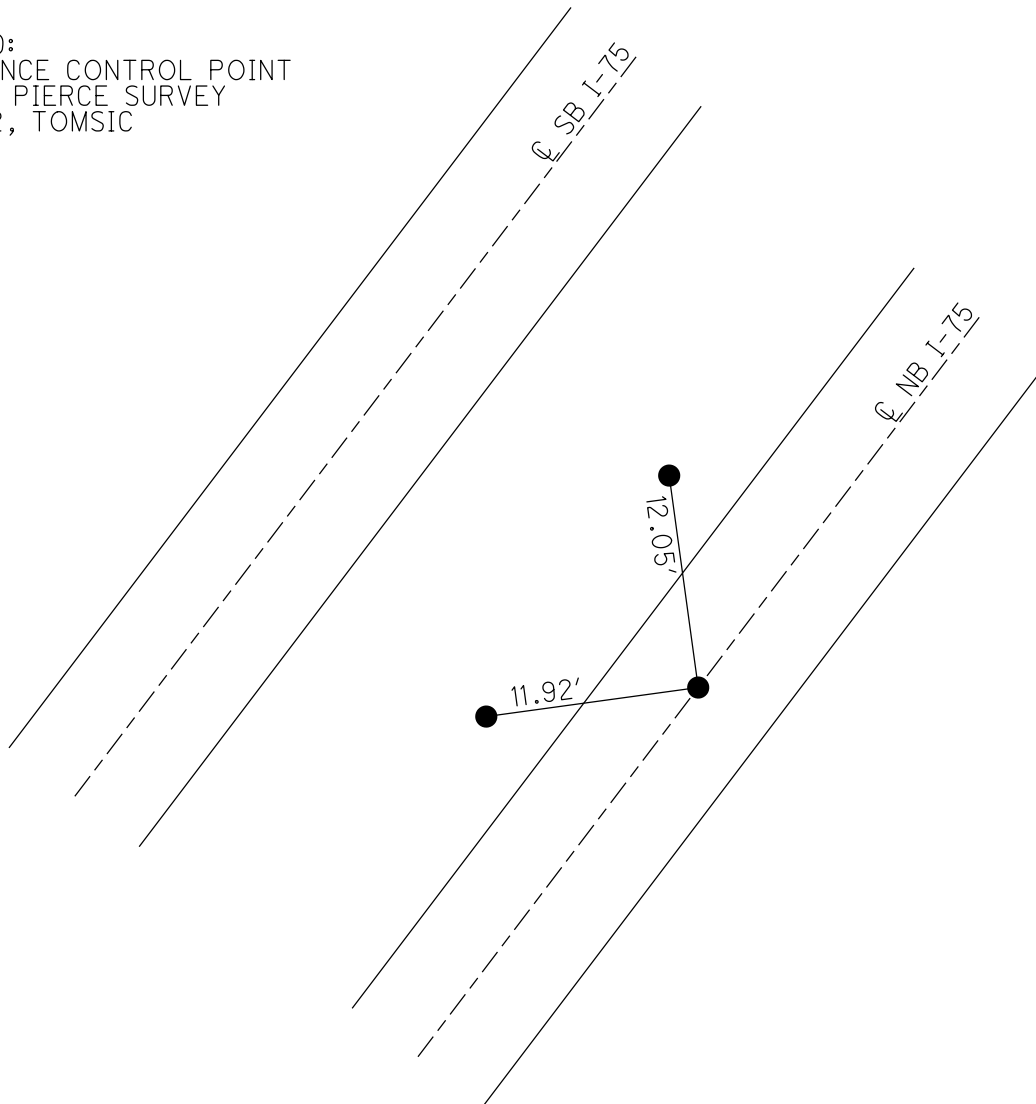
GEOID: _____

GRID: NORTHING: _____

EASTING: _____



RECORD:
REFERENCE CONTROL POINT
SET BY PIERCE SURVEY
11/9/72, TOMSIK



O.D.O.T. DISTRICT 2 SURVEY OFFICE (USE ONLY)

PERSONNEL _____

REFERENCE NO. _____

SHEET 17 OF 20

NOTES TOMSIC

DATE 11/9/72

ROUTE I-75

H.C. NEUSER

WEATHER _____

COUNTY LUCAS

R.C. VANYO

TEMP. _____

TOWNSHIP CITY OF TOLEDO

GRANATA

SECTION 22

DWG BY NIESE PID _____

T 9 S R 7 E

TYPE MONUMENT IPIN

ON SURFACE - BELOW _____ ON _____

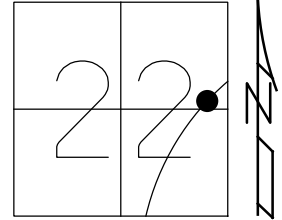
OFFSET ϕ PAVEMENT _____ LT : RT

_____ TO _____ EDGE PAVEMENT

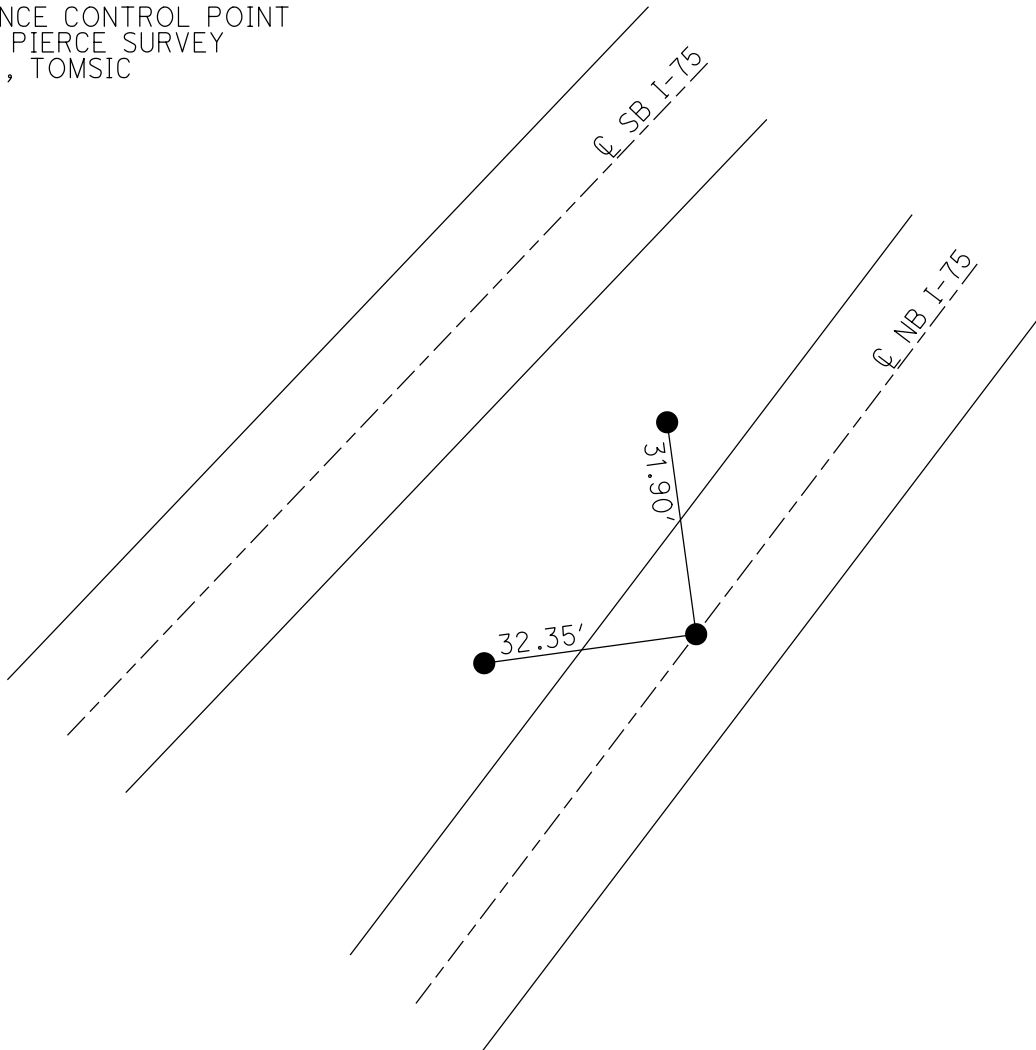
STATION: 295+81.46

HORZ.DATUM: _____ GEOID: _____

GRID: NORTHING: _____ EASTING: _____



RECORD:
REFERENCE CONTROL POINT
SET BY PIERCE SURVEY
11/9/72, TOMSIC



O.D.O.T. DISTRICT 2 SURVEY OFFICE (USE ONLY)

PERSONNEL

REFERENCE NO. _____

SHEET 18 OF 20

NOTES TOMSIK

DATE 11/9/72

ROUTE I-75

H.C. NEUSER

WEATHER _____

COUNTY LUCAS

R.C. VANYO

TEMP. _____

TOWNSHIP CITY OF TOLEDO

GRANATA

SECTION 22

DWG BY NIESE PID _____

T 9 S R 7 E

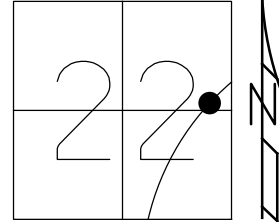
TYPE MONUMENT MONBOX

ON SURFACE - ~~BELOW~~ ON _____

OFFSET \odot PAVEMENT _____ LT : RT

- TO - EDGE PAVEMENT

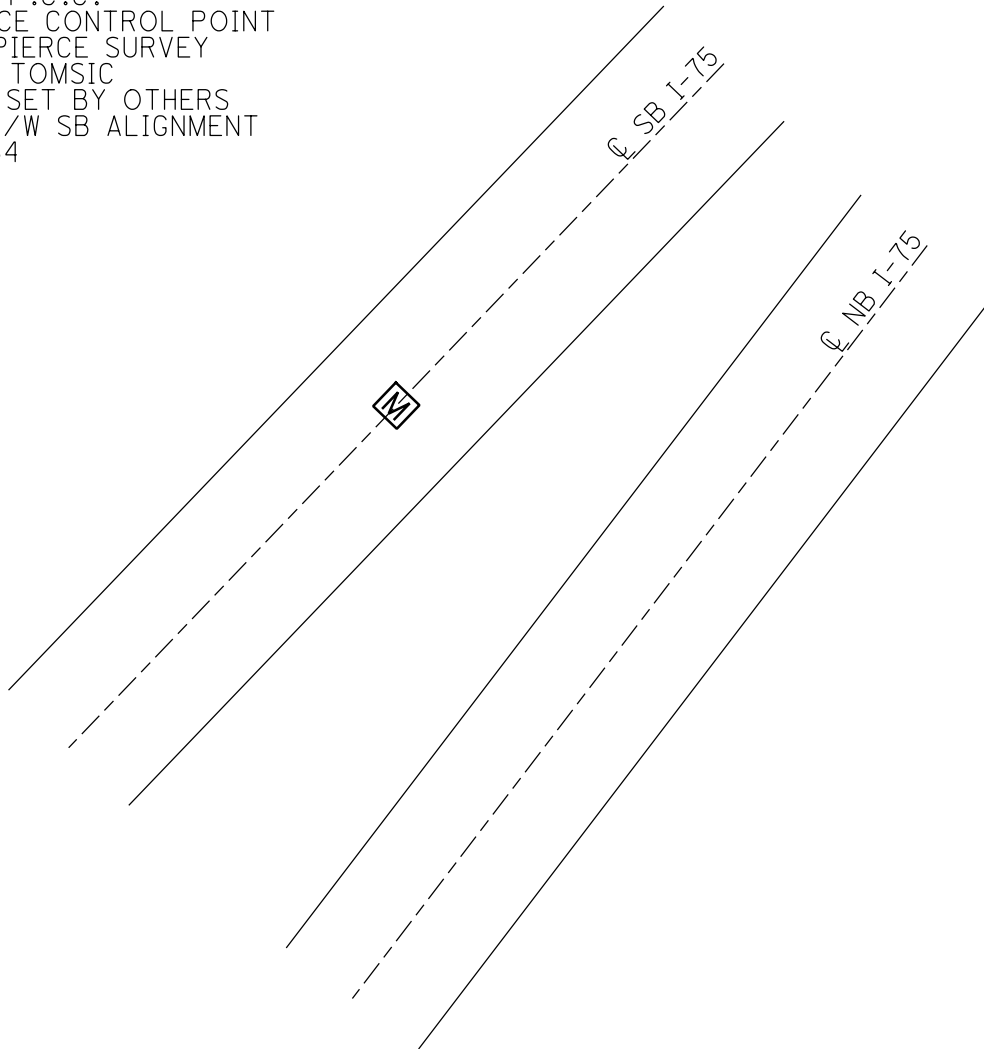
STATION: 295+95



HORIZ.DATUM: NAD83(ADJUSTED 1995) GEOID: _____

GRID: NORTHING: 737391.778 EASTING: 1676855.550

RECORD: P.C.C.
REFERENCE CONTROL POINT
SET BY PIERCE SURVEY
11/9/72, TOMSIK
MONBOX SET BY OTHERS
I-75 \odot R/W SB ALIGNMENT
PID 77254
4/24/20



O.D.O.T. DISTRICT 2 SURVEY OFFICE (USE ONLY)

PERSONNEL _____

REFERENCE NO. _____

SHEET 19 OF 20

NOTES _____

DATE 11/10/71

ROUTE I-75

H.C. _____

WEATHER _____

COUNTY LUCAS

R.C. _____

TEMP. _____

TOWNSHIP CITY OF TOLEDO

DWG BY NIESE PID _____

SECTION 23

T 9 S R 7 E

TYPE MONUMENT IPIN

ON SURFACE - ~~BELOW~~ ON

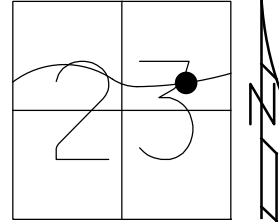
OFFSET 0.05' LT : ~~RT~~

- TO - EDGE PAVEMENT

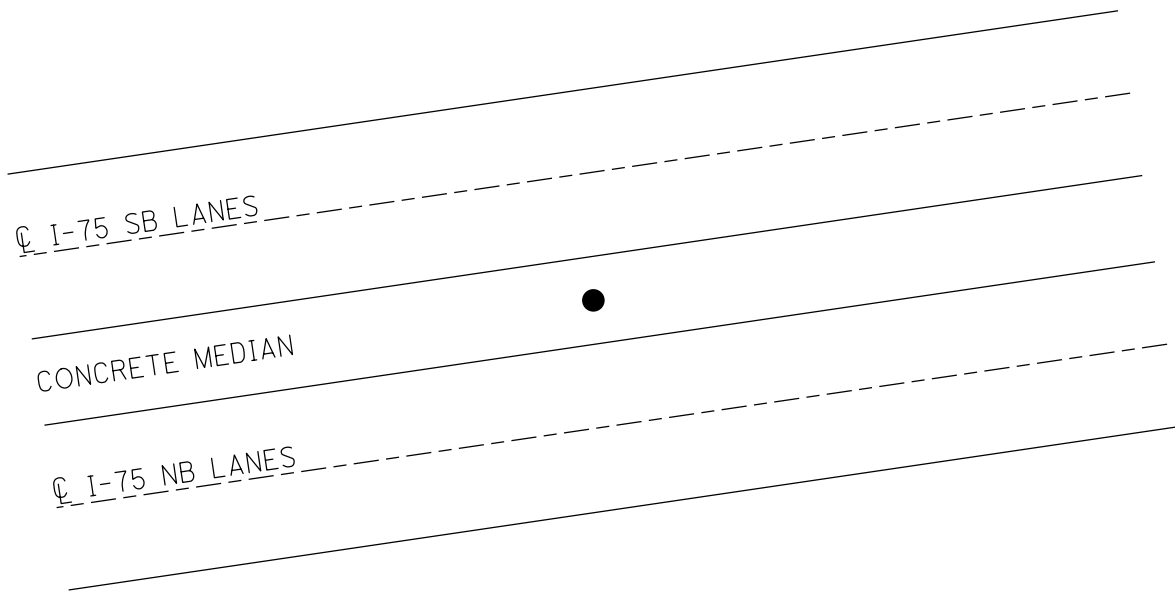
STATION: 345+80.42

HORIZ.DATUM: NAD83(ADJUSTED 1995) GEOID: _____

GRID: NORTHING: 737954.886 EASTING: 1681714.574



RECORD: S.T.
STA 345+80.62
11/10/71, RWB
FD IPIN
I-75 0 R/W
PROPOSED DISC
PID 77254
4/24/20



O.D.O.T. DISTRICT 2 SURVEY OFFICE (USE ONLY)

PERSONNEL _____

REFERENCE NO. _____

SHEET 20 OF 20

NOTES _____

DATE 10/10/71

ROUTE I-75

H.C. _____

WEATHER _____

COUNTY LUCAS

R.C. _____

TEMP. _____

TOWNSHIP CITY OF TOLEDO

DWG BY NIESE

PID _____

SECTION 23

T 9 S R 7 E

TYPE MONUMENT IPIN

ON SURFACE - ~~BELOW~~ ON

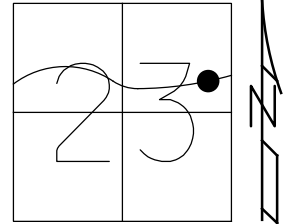
OFFSET 0.25' ~~LT~~ : RT

- TO - EDGE PAVEMENT

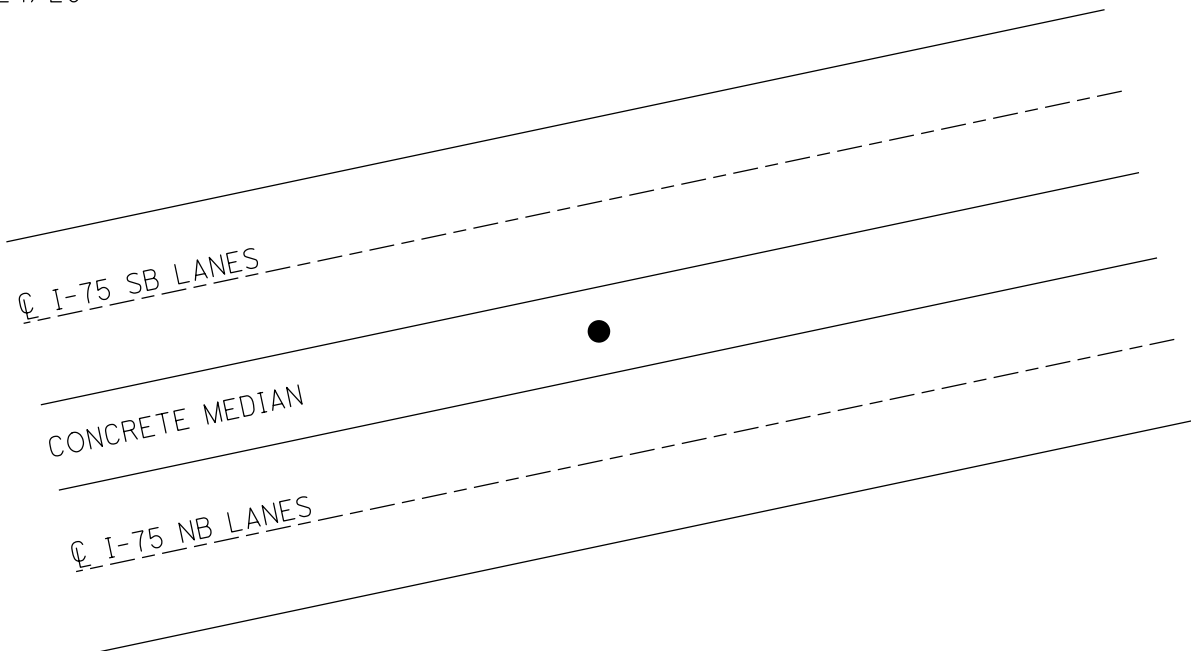
STATION: 350+99.12

HORZ. DATUM: NAD83(ADJUSTED 1995) GEOID: _____

GRID: NORTHING: 738143.704 EASTING: 1682227.057



RECORD: P.C.
STA 350+99.18
11/10/71, RWB
FD IPIN
I-75 0 R/W
PROPOSED DISC
PID 77254
4/24/20



O.D.O.T. DISTRICT 2 SURVEY OFFICE (USE ONLY)

PERSONNEL _____

REFERENCE NO. _____

SHEET 1 OF 34

NOTES VAN DUSEN

DATE 1/30/98

ROUTE I-75

H.C. MOSER

WEATHER CLOUDY

COUNTY LUCAS

R.C. HUSS

TEMP. 35°

TOWNSHIP CITY OF TOLEDO

DWG BY NIESE

PID _____

SECTION 17

T 9 S R 8 E

TYPE MONUMENT 1/4" DRILL HOLE

ON SURFACE - ~~BELOW~~ ON

OFFSET ϕ PAVEMENT _____ LT : RT

- TO - EDGE PAVEMENT

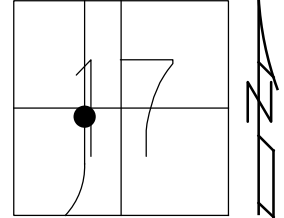
STATION: _____

HORZ.DATUM: _____

GEOID: _____

GRID: NORTHING: _____

EASTING: _____



RECORD:
1/4" DRILL HOLE
IN RETAINING WALL
PT#1047
N: 42191.843
E: 39024.033
1/30/98, VAN DUSEN

ϕ SB I-75

ϕ NB I-75

CONCRETE MEDIAN

CONC. RETAINING WALL

● 1/4" DRILL HOLE
IN CONC WALL

O.D.O.T. DISTRICT 2 SURVEY OFFICE (USE ONLY)

PERSONNEL

REFERENCE NO. _____

SHEET 2 OF 34

NOTES VAN DUSEN

DATE 2/3/98

ROUTE I-75

H.C. MOSER

WEATHER CLEAR

COUNTY LUCAS

R.C. HUSS
WATSON

TEMP. 35°

TOWNSHIP CITY OF TOLEDO

DWG BY NIESE PID _____

SECTION 17

T 9 S R 8 E

TYPE MONUMENT P.K./WASHER

ON SURFACE - ~~BELOW~~ ON _____

OFFSET \odot PAVEMENT 53.12' ~~RT~~ : RT

- TO - EDGE PAVEMENT

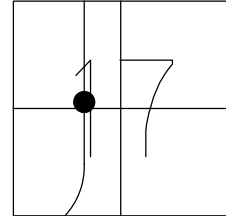
STATION: 415+97.34

HORZ.DATUM: _____

GEOID: _____

GRID: NORTHING: _____

EASTING: _____

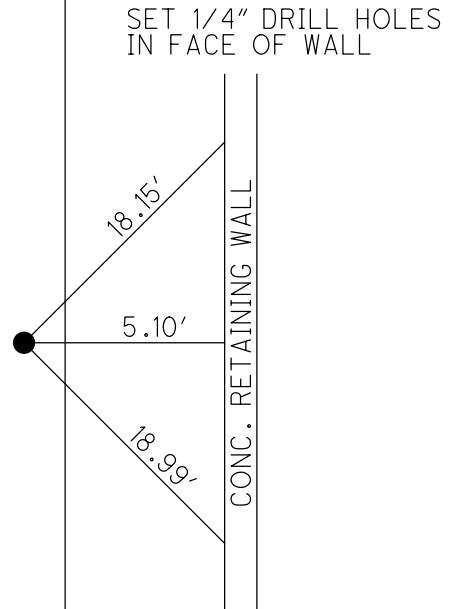


RECORD:
STA 415+97.34
SET P.K./WASHER
TRAVERSE PT#1043
N: 42528.239
E: 38939.540
2/3/98, VAN DUSEN

\odot SB I-75

\odot NB I-75

CONCRETE MEDIAN



O.D.O.T. DISTRICT 2 SURVEY OFFICE (USE ONLY)

PERSONNEL _____

REFERENCE NO. _____

SHEET 3 OF 34

NOTES VAN DUSEN

DATE 1/30/98

ROUTE I-75

H.C. MOSER

WEATHER CLOUDY

COUNTY LUCAS

R.C. HUSS

TEMP. 35°

TOWNSHIP CITY OF TOLEDO

DWG BY NIESE PID _____

SECTION 17

T 9 S R 8 E

TYPE MONUMENT IPIN

ON SURFACE - ~~BELOW~~ ON

OFFSET ☉ PAVEMENT ON LT : RT

- TO - EDGE PAVEMENT

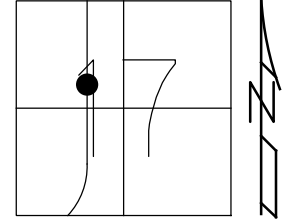
STATION: 420+00

HORZ.DATUM: _____

GEOID: _____

GRID: NORTHING: _____

EASTING: _____



RECORD:
IPIN IN CONC WALL
ORIGINAL POSTION OF
CONSULTANTS "+" CUT
PRE-CONSTRUCTION
PT#1041
N: 42908.054
E: 38795.680
1/30/98, VAN DUSEN

☉ SB I-75

☉ NB I-75

PT#1040

DIST. PT#1041-PT#1040=0.46'

CONCRETE MEDIAN

O.D.O.T. DISTRICT 2 SURVEY OFFICE (USE ONLY)

PERSONNEL _____

REFERENCE NO. _____

SHEET 4 OF 34

NOTES VAN DUSEN

DATE 1/30/98

ROUTE I-75

H.C. MOSE

WEATHER CLOUDY

COUNTY LUCAS

R.C. HUSS

TEMP. 35°

TOWNSHIP CITY OF TOLEDO

SECTION 17

DWG BY NIESE

PID _____

T 9 S R 8 E

TYPE MONUMENT 1/4" DRILL HOLE

ON SURFACE - ~~BELOW~~ ON

OFFSET 0.07' ± : RT

- TO - EDGE PAVEMENT

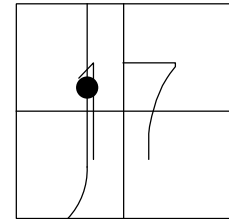
STATION: 420+00.46

HORZ. DATUM: _____

GEOID: _____

GRID: NORTHING: _____

EASTING: _____



RECORD:
1/4" DRILL HOLE
IN RETAINING WALL
ORIGINAL POSITION OF
MONBOX SET PRE-CONST.
PT#1040
N: 42908.534
E: 38795.613
1/30/98, VAN DUSEN

CL SB I-75

CL NB I-75

DIST. PT#1041-PT#1040=0.46'

●
●
PT#1041

CONCRETE MEDIAN

O.D.O.T. DISTRICT 2 SURVEY OFFICE (USE ONLY)

PERSONNEL

REFERENCE NO. _____

SHEET 5 OF 34

NOTES VAN DUSEN

DATE 1/30/98

ROUTE I-75

H.C. MOSER

WEATHER CLOUDY

COUNTY LUCAS

R.C. HUSS

TEMP. 35°

TOWNSHIP CITY OF TOLEDO

SECTION 17

DWG BY NIESE PID _____

T 9 S R 8 E

TYPE MONUMENT 1/4" DRILL HOLE

ON SURFACE - ~~BELOW~~ ON _____

OFFSET \bar{C} PAVEMENT _____ LT : RT

_____ TO _____ EDGE PAVEMENT

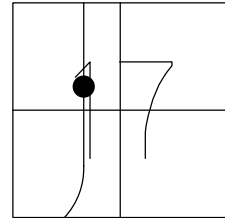
STATION: _____

HORZ.DATUM: _____

GEOID: _____

GRID: NORTHING: _____

EASTING: _____



RECORD:
1/4" DRILL HOLE
IN RETAINING WALL
PT#1045
N: 42919.514
E: 38853.314
1/30/98, VAN DUSEN

\bar{C} SB I-75

\bar{C} NB I-75

CONCRETE MEDIAN

CONC. RETAINING WALL



1/4" DRILL HOLE
IN CONC WALL

O.D.O.T. DISTRICT 2 SURVEY OFFICE (USE ONLY)

PERSONNEL _____

REFERENCE NO. _____

SHEET 6 OF 34

NOTES VAN DUSEN

DATE 1/30/98

ROUTE I-75

H.C. MOSER

WEATHER CLOUDY

COUNTY LUCAS

R.C. HUSS

TEMP. 35°

TOWNSHIP CITY OF TOLEDO

DWG BY NIESE

PID _____

SECTION 17

T 9 S R 8 E

TYPE MONUMENT 1/4" DRILL HOLE

ON SURFACE - ~~BELOW~~ ON

OFFSET ☉ PAVEMENT _____ LT : RT

- TO - EDGE PAVEMENT

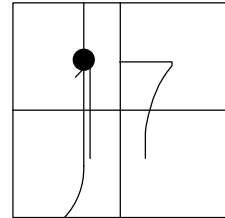
STATION: _____

HORZ. DATUM: _____

GEOID: _____

GRID: NORTHING: _____

EASTING: _____



RECORD:
1/4" DRILL HOLE
IN RETAINING WALL
PT#1038
N: 43569.045
E: 38717.897
1/30/98, VAN DUSEN

☉ SB I-75

☉ NB I-75

CONCRETE MEDIAN

CONC. RETAINING WALL



1/4" DRILL HOLE
IN CONC WALL

O.D.O.T. DISTRICT 2 SURVEY OFFICE (USE ONLY)

PERSONNEL _____

REFERENCE NO. _____

SHEET 7 OF 34

NOTES VAN DUSEN

DATE 1/30/98

ROUTE I-75

H.C. MOSER

WEATHER CLOUDY

COUNTY LUCAS

R.C. HUSS

TEMP. 35°

TOWNSHIP CITY OF TOLEDO

DWG BY NIESE

PID _____

SECTION 17

T 9 S R 8 E

TYPE MONUMENT IPIN

ON SURFACE - ~~BELOW~~ ON

OFFSET \varnothing PAVEMENT ON LT : RT

- TO - EDGE PAVEMENT

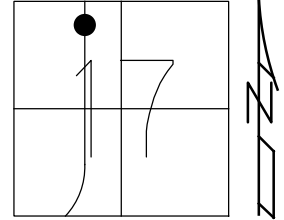
STATION: 435+00

HORZ.DATUM: _____

GEOID: _____

GRID: NORTHING: _____

EASTING: _____



RECORD:
IPIN IN CONC WALL
ORIGINAL POSITION OF
CONSULTANT'S "+" CUT
PRE-CONST.
PT#1035
N: 44368.242
E: 38452.758
1/30/98, VAN DUSEN

\varnothing SB I-75

\varnothing NB I-75

PT#1036



CONCRETE MEDIAN

DIST. PT#1035-PT#1036=0.11'

O.D.O.T. DISTRICT 2 SURVEY OFFICE (USE ONLY)

PERSONNEL

REFERENCE NO. _____

SHEET 8 OF 34

NOTES VAN DUSEN

DATE 1/30/98

ROUTE I-75

H.C. MOSER

WEATHER CLOUDY

COUNTY LUCAS

R.C. HUSS

TEMP. 35°

TOWNSHIP CITY OF TOLEDO

SECTION 17

DWG BY NIESE PID _____

T 9 S R 8 E

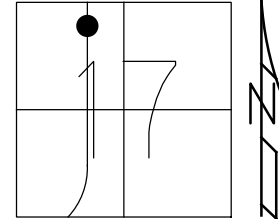
TYPE MONUMENT 1/4" DRILL HOLE

ON SURFACE - ~~BELOW~~ ON

OFFSET \odot PAVEMENT 0.10' \pm : RT

- TO - EDGE PAVEMENT

STATION: 435+00.10



HORZ. DATUM: _____

GEOID: _____

GRID: NORTHING: _____

EASTING: _____

RECORD:
1/4" DRILL HOLE
IN CONC WALL
ORIGINAL POSITION OF
MONBOX PRE-CONST.
PT#1036
N: 44368.347
E: 38452.803
1/30/98, VAN DUSEN

\odot SB I-75

\odot NB I-75

DIST. PT#1035-PT#1036=0.11'

CONCRETE MEDIAN

●
●
PT#1035

O.D.O.T. DISTRICT 2 SURVEY OFFICE (USE ONLY)

PERSONNEL _____

REFERENCE NO. _____

SHEET 9 OF 34

NOTES VAN DUSEN

DATE 2/3/98

ROUTE I-75

H.C. MOSER

WEATHER CLEAR

COUNTY LUCAS

R.C. HUSS
WATSON

TEMP. 35°

TOWNSHIP CITY OF TOLEDO

DWG BY NIESE PID _____

SECTION 8

T 9 S R 8 E

TYPE MONUMENT 1/4" DRILL HOLE

ON SURFACE - ~~BELOW~~ ON

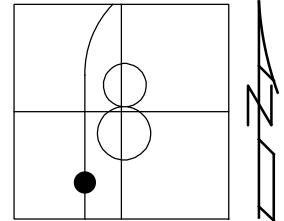
OFFSET \varnothing PAVEMENT 54.66' LT : ~~RT~~

- TO - EDGE PAVEMENT

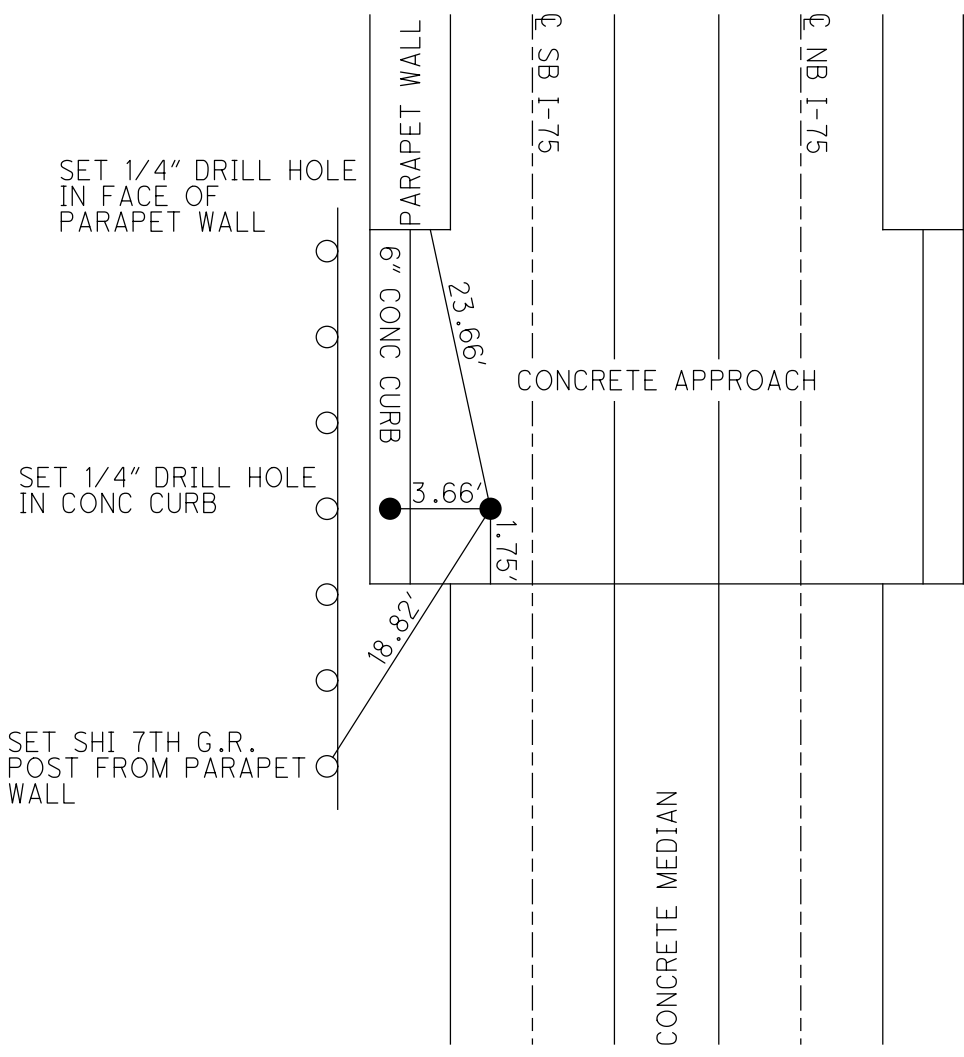
STATION: 449+84.72

HORZ. DATUM: _____ GEOID: _____

GRID: NORTHING: _____ EASTING: _____



RECORD:
SET 1/4" DRILL HOLE
TRAVERSE PT#1034
N: 45801.142
E: 38060.304
2/3/98, VAN DUSEN



O.D.O.T. DISTRICT 2 SURVEY OFFICE (USE ONLY)

PERSONNEL _____

REFERENCE NO. _____

SHEET 10 OF 34

NOTES VAN DUSEN

DATE 1/30/98

ROUTE I-75

H.C. MOSER

WEATHER CLOUDY

COUNTY LUCAS

R.C. HUSS

TEMP. 35°

TOWNSHIP CITY OF TOLEDO

DWG BY NIESE

PID _____

SECTION 8

T 9 S R 8 E

TYPE MONUMENT IPIN

ON SURFACE - ~~BELOW~~ ON

OFFSET \varnothing PAVEMENT ON LT : RT

- TO - EDGE PAVEMENT

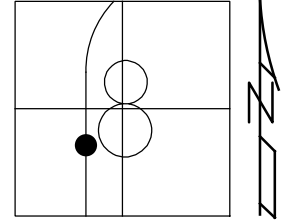
STATION: 455+00

HORZ. DATUM: _____

GEOID: _____

GRID: NORTHING: _____

EASTING: _____



RECORD:
 IPIN IN CONC WALL
 ORIGINAL POSITION OF
 CONSULTANT'S "+" CUT
 PRE-CONST.
 PT#1028
 N: 46315.282
 E: 37995.766
 1/30/98, VAN DUSEN

\varnothing SB I-75

\varnothing NB I-75

PT#1027

CONCRETE MEDIAN

DIST. PT#1027-PT#1028=1.47'

O.D.O.T. DISTRICT 2 SURVEY OFFICE (USE ONLY)

PERSONNEL _____

REFERENCE NO. _____

SHEET 11 OF 34

NOTES VAN DUSEN

DATE 1/30/98

ROUTE I-75

H.C. MOSER

WEATHER CLOUDY

COUNTY LUCAS

R.C. HUSS

TEMP. 35°

TOWNSHIP CITY OF TOLEDO

SECTION 8

DWG BY NIESE PID _____

T 9 S R 8 E

TYPE MONUMENT 1/4" DRILL HOLE

ON SURFACE - ~~BELOW~~ ON

OFFSET \varnothing PAVEMENT 0.12' LT : ~~RT~~

- TO - EDGE PAVEMENT

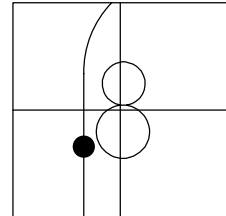
STATION: 455+01.47

HORZ. DATUM: _____

GEOID: _____

GRID: NORTHING: _____

EASTING: _____



RECORD:
1/4" DRILL HOLE
ORIGINAL POSITION OF
MONBOX, PRE-CONST.
PT#1027
N: 46316.694
E: 37995.355
1/30/98, VAN DUSEN

\varnothing SB I-75

\varnothing NB I-75

DIST. PT#1027-PT#1028=1.47'



CONCRETE MEDIAN

O.D.O.T. DISTRICT 2 SURVEY OFFICE (USE ONLY)

PERSONNEL

REFERENCE NO. _____

SHEET 12 OF 34

NOTES VAN DUSEN

DATE 1/30/98

ROUTE I-75

H.C. MOSER

WEATHER CLOUDY

COUNTY LUCAS

R.C. HUSS

TEMP. 35°

TOWNSHIP CITY OF TOLEDO

SECTION 8

DWG BY NIESE

PID _____

T 9 S R 8 E

TYPE MONUMENT 1/4" DRILL HOLE

ON SURFACE - BELOW ON

OFFSET \odot PAVEMENT _____ LT : RT

- TO - EDGE PAVEMENT

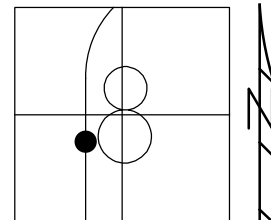
STATION: _____

HORZ. DATUM: _____

GEOID: _____

GRID: NORTHING: _____

EASTING: _____



RECORD:
1/4" DRILL HOLE
IN RETAINING WALL
PT#1022
N: 46530.931
E: 38005.625
1/30/98, VAN DUSEN

\odot SB I-75

\odot NB I-75

CONCRETE MEDIAN

CONC. RETAINING WALL

\bullet 1/4" DRILL HOLE
IN CONC WALL

O.D.O.T. DISTRICT 2 SURVEY OFFICE (USE ONLY)

PERSONNEL _____

REFERENCE NO. _____

SHEET 13 OF 34

NOTES VAN DUSEN

DATE 1/30/98

ROUTE I-75

H.C. MOSER

WEATHER CLOUDY

COUNTY LUCAS

R.C. HUSS

TEMP. 35°

TOWNSHIP CITY OF TOLEDO

SECTION 8

DWG BY NIESE

PID _____

T 9 S R 8 E

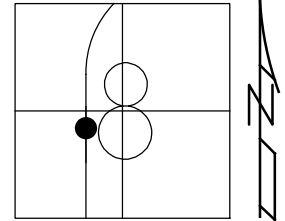
TYPE MONUMENT IPIN

ON SURFACE - ~~BELOW~~ ON

OFFSET \odot PAVEMENT 1.17' LT : ~~RT~~

- TO - EDGE PAVEMENT

STATION: 460+00.37



HORZ.DATUM: NAD83(2011)

GEOID: _____

GRID: NORTHING: 747487.616

EASTING: 1694939.150

RECORD: CALC P.O.T.
IPIN IN CONC WALL
ORIGINAL POSITION OF
CONSULTANT'S "+" CUT
PRE-CONST
PT#1021
N: 46801.987
E: 37881.439
1/30/98, VAN DUSEN
FD IPIN IN CONC WALL
2015

C SB I-75

C NB I-75

DIST. PT#1020-PT#1021=1.25'



CONCRETE MEDIAN

O.D.O.T. DISTRICT 2 SURVEY OFFICE (USE ONLY)

PERSONNEL _____

REFERENCE NO. _____

SHEET 14 OF 34

NOTES VAN DUSEN

DATE 1/30/98

ROUTE I-75

H.C. MOSE

WEATHER CLOUDY

COUNTY LUCAS

R.C. HUSS

TEMP. 35°

TOWNSHIP CITY OF TOLEDO

SECTION 8

DWG BY NIESE

PID _____

T 9 S R 8 E

TYPE MONUMENT 1/4" DRILL HOLE

ON SURFACE - ~~BELOW~~ ON

OFFSET ☉ PAVEMENT ON LT : RT

- TO - EDGE PAVEMENT

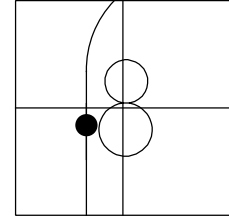
STATION: 460+00.37

HORZ. DATUM: NAD83(2011)

GEOID: _____

GRID: NORTHING: 747488.787

EASTING: 1694939.147



RECORD: P.O.T.
1/4" DRILL HOLE
ORIGINAL POSITION OF
MONBOX, PRE-CONST.
PT#1020
N: 46803.196
E: 37881.071
1/30/98, VAN DUSEN
FD DRILL HOLE
HELD FOR ☉
FOR 2015 PLANS

DIST. PT#1020-PT#1021=1.25'

☉ SB I-75

☉ NB I-75

PT#1021

CONCRETE MEDIAN

O.D.O.T. DISTRICT 2 SURVEY OFFICE (USE ONLY)

PERSONNEL _____

REFERENCE NO. _____

SHEET 15 OF 34

NOTES VAN DUSEN

DATE 1/30/98

ROUTE I-75

H.C. MOSER

WEATHER CLOUDY

COUNTY LUCAS

R.C. HUSS

TEMP. 35°

TOWNSHIP CITY OF TOLEDO

DWG BY NIESE PID _____

SECTION 8

T 9 S R 8 E

TYPE MONUMENT 1/4" DRILL HOLE

ON SURFACE - ~~BELOW~~ ON

OFFSET ϕ PAVEMENT _____ LT : RT

- TO - EDGE PAVEMENT

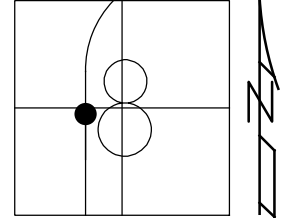
STATION: _____

HORZ. DATUM: _____

GEOID: _____

GRID: NORTHING: _____

EASTING: _____



RECORD:
1/4" DRILL HOLE
IN RETAINING WALL
PT#1023
N: 47107.674
E: 37870.052
1/30/98, VAN DUSEN

ϕ SB I-75

ϕ NB I-75

CONCRETE MEDIAN

CONC. RETAINING WALL

● 1/4" DRILL HOLE
IN CONC WALL

O.D.O.T. DISTRICT 2 SURVEY OFFICE (USE ONLY)

PERSONNEL _____

REFERENCE NO. _____

SHEET 16 OF 34

NOTES VAN DUSEN

DATE 1/30/98

ROUTE I-75

H.C. MOSE

WEATHER CLOUDY

COUNTY LUCAS

R.C. HUSS

TEMP. 35°

TOWNSHIP CITY OF TOLEDO

SECTION 8

DWG BY NIESE PID _____

T 9 S R 8 E

TYPE MONUMENT 1/4" DRILL HOLE

ON SURFACE - ~~BELOW~~ ON

OFFSET Q PAVEMENT _____ LT : RT

- TO - EDGE PAVEMENT

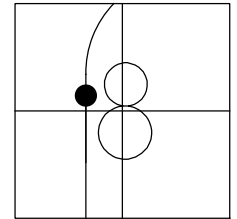
STATION: _____

HORZ. DATUM: _____

GEOID: _____

GRID: NORTHING: _____

EASTING: _____



RECORD:
1/4" DRILL HOLE
IN RETAINING WALL
PT#1024
N: 47621.489
E: 37749.579
1/30/98, VAN DUSEN

Q SB I-75

Q NB I-75

CONCRETE MEDIAN

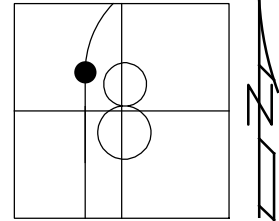
CONC. RETAINING WALL

● 1/4" DRILL HOLE
IN CONC WALL

O.D.O.T. DISTRICT 2 SURVEY OFFICE (USE ONLY)

PERSONNEL _____ REFERENCE NO. _____ SHEET 17 OF 34
 NOTES VAN DUSEN DATE 1/30/98 ROUTE I-75
 H.C. MOSER WEATHER CLOUDY COUNTY LUCAS
 R.C. HUSS TEMP. 35° TOWNSHIP CITY OF TOLEDO
 DWG BY NIESE PID _____ SECTION 8
 T 9 S R 8 E

TYPE MONUMENT IPIN
 ON SURFACE - ~~BELOW~~ ON
 OFFSET ☉ PAVEMENT 0.05' LT : ~~RT~~
- TO - EDGE PAVEMENT
 STATION: 473+84.80



HORIZ.DATUM: NAD83(2011) GEOID: _____
 GRID: NORTHING: 748873.140 EASTING: 1694924.895

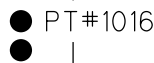
RECORD: CALC T.S.
 IPIN IN CONC WALL
 ORIGINAL POSITION OF
 CONSULTANT'S "+" CUT
 PRE-CONST
 PT#1017
 N: 48150.852
 E: 37564.684
 1/30/98, VAN DUSEN
 FD IPIN IN CONC WALL
 2015

DIST. PT#1016-PT#1017=1.00'

☉ SB I-75

☉ NB I-75

CONCRETE MEDIAN



O.D.O.T. DISTRICT 2 SURVEY OFFICE (USE ONLY)

PERSONNEL _____

REFERENCE NO. _____

SHEET 18 OF 34

NOTES VAN DUSEN

DATE 1/30/98

ROUTE I-75

H.C. MOSER

WEATHER CLOUDY

COUNTY LUCAS

R.C. HUSS

TEMP. 35°

TOWNSHIP CITY OF TOLEDO

SECTION 8

DWG BY NIESE PID _____

T 9 S R 8 E

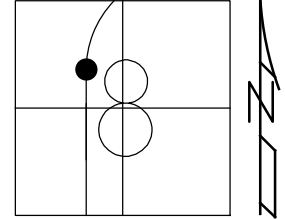
TYPE MONUMENT 1/4" DRILL HOLE

ON SURFACE - ~~BELOW~~ ON

OFFSET ☉ PAVEMENT ON LT : RT

- TO - EDGE PAVEMENT

STATION: 473+85.69



HORZ.DATUM: NAD83(2011)

GEOID: _____

GRID: NORTHING: 748874.030

EASTING: 1694924.937

RECORD: T.S.
1/4" DRILL HOLE
ORIGINAL POSITION OF
MONBOX, PRE-CONST.
PT#1016
N: 48151.852
E: 37564.491
1/30/98, VAN DUSEN
FD DRILL HOLE
HELD FOR ☉
FOR 2015 PLANS

☉ SB I-75

☉ NB I-75

DIST. PT#1016-PT#1017=1.00'

CONCRETE MEDIAN

● ● PT#1017

O.D.O.T. DISTRICT 2 SURVEY OFFICE (USE ONLY)

PERSONNEL _____

REFERENCE NO. _____

SHEET 19 OF 34

NOTES VAN DUSEN

DATE 1/30/98

ROUTE I-75

H.C. MOSER

WEATHER CLOUDY

COUNTY LUCAS

R.C. HUSS

TEMP. 35°

TOWNSHIP CITY OF TOLEDO

DWG BY NIESE

PID _____

SECTION 8

T 9 S R 8 E

TYPE MONUMENT IPIN

ON SURFACE - ~~BELOW~~ ON

OFFSET Q PAVEMENT ON LT : RT

- TO - EDGE PAVEMENT

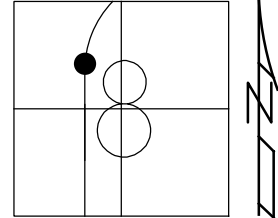
STATION: 475+85.69

HORZ. DATUM: _____

GEOID: _____

GRID: NORTHING: _____

EASTING: _____



RECORD: S.C.
IPIN IN CONC WALL
N: 48345.98
E: 37521.14
1/30/98, VAN DUSEN

Q SB I-75

Q NB I-75

CONCRETE MEDIAN

O.D.O.T. DISTRICT 2 SURVEY OFFICE (USE ONLY)

PERSONNEL _____

REFERENCE NO. _____

SHEET 20 OF 34

NOTES VAN DUSEN

DATE 1/30/98

ROUTE I-75

H.C. MOSER

WEATHER CLOUDY

COUNTY LUCAS

R.C. HUSS

TEMP. 35°

TOWNSHIP CITY OF TOLEDO

DWG BY NIESE

PID _____

SECTION 8

T 9 S R 8 E

TYPE MONUMENT 1/4" DRILL HOLE

ON SURFACE - ~~BELOW~~ ON _____

OFFSET ☐ PAVEMENT _____ LT : RT

- TO - EDGE PAVEMENT

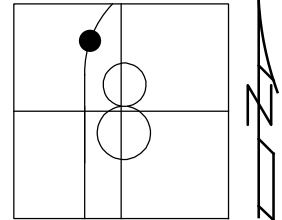
STATION: _____

HORZ. DATUM: _____

GEOID: _____

GRID: NORTHING: _____

EASTING: _____



RECORD:
1/4" DRILL HOLE
IN RETAINING WALL
PT#1019
N: 48986.321
E: 37658.858
1/30/98, VAN DUSEN

☐ SB I-75

☐ NB I-75

CONCRETE MEDIAN

CONC. RETAINING WALL

● 1/4" DRILL HOLE
IN CONC WALL

O.D.O.T. DISTRICT 2 SURVEY OFFICE (USE ONLY)

PERSONNEL _____

REFERENCE NO. _____

SHEET 21 OF 34

NOTES VAN DUSEN

DATE 1/30/98

ROUTE I-75

H.C. MOSER

WEATHER CLOUDY

COUNTY LUCAS

R.C. HUSS

TEMP. 35°

TOWNSHIP CITY OF TOLEDO

SECTION 8

DWG BY NIESE

PID _____

T 9 S R 8 E

TYPE MONUMENT 1/4" DRILL HOLE

ON SURFACE - ~~BELOW~~ ON

OFFSET 0 PAVEMENT _____ LT : RT

- TO - EDGE PAVEMENT

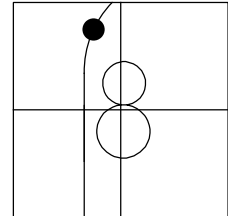
STATION: _____

HORIZ.DATUM: _____

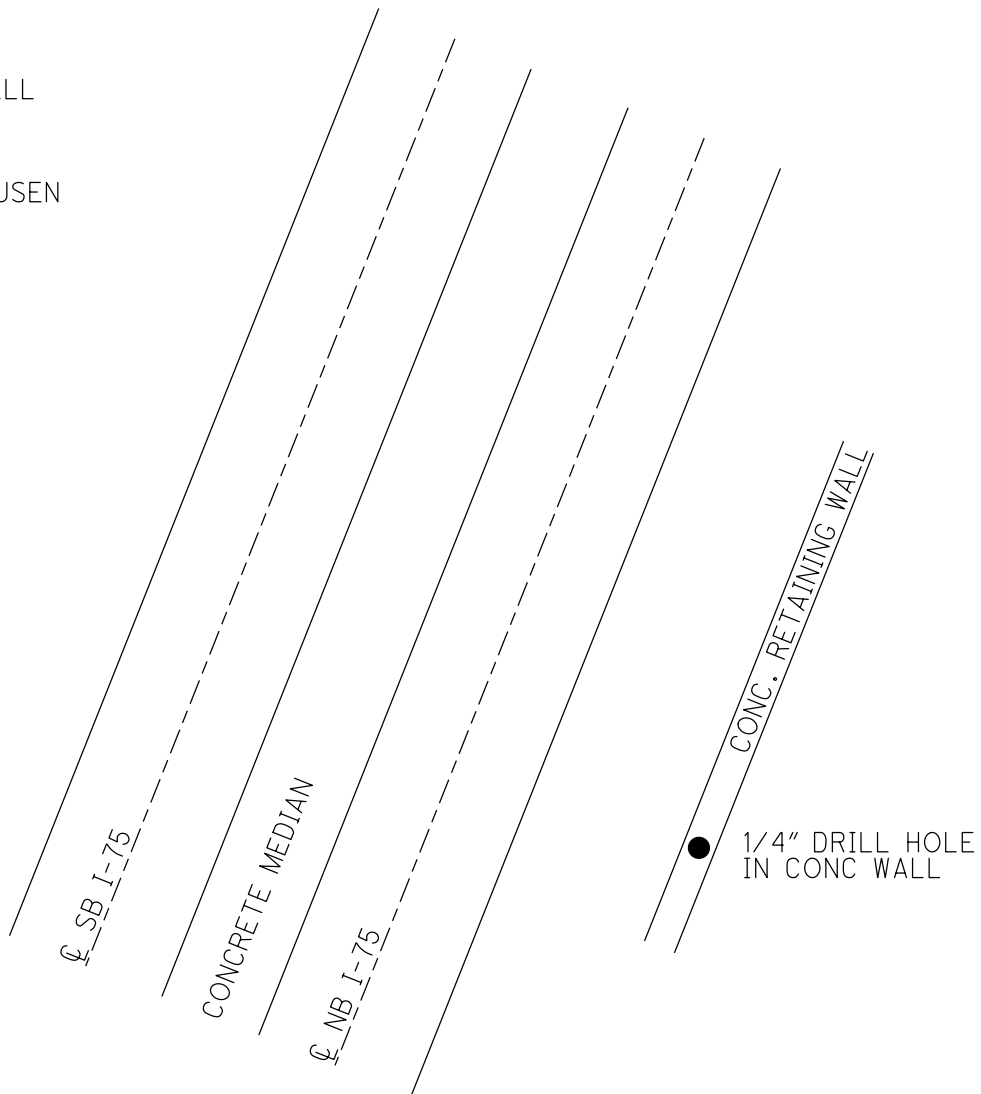
GEOID: _____

GRID: NORTHING: _____

EASTING: _____



RECORD:
 1/4" DRILL HOLE
 IN RETAINING WALL
 PT#1018
 N: 49217.931
 E: 37715.354
 1/30/98, VAN DUSEN



O.D.O.T. DISTRICT 2 SURVEY OFFICE (USE ONLY)

PERSONNEL

REFERENCE NO. _____

SHEET 22 OF 34

NOTES VAN DUSEN

DATE 1/30/98

ROUTE I-75

H.C. MOSER

WEATHER CLOUDY

COUNTY LUCAS

R.C. HUSS

TEMP. 35°

TOWNSHIP CITY OF TOLEDO

SECTION 5

DWG BY NIESE

PID _____

T 9 S R 8 E

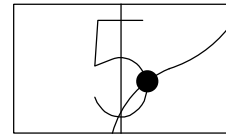
TYPE MONUMENT IPIN

ON SURFACE - ~~BELOW~~ ON

OFFSET ϕ PAVEMENT ON LT : RT

- TO - EDGE PAVEMENT

STATION: 505+06.61



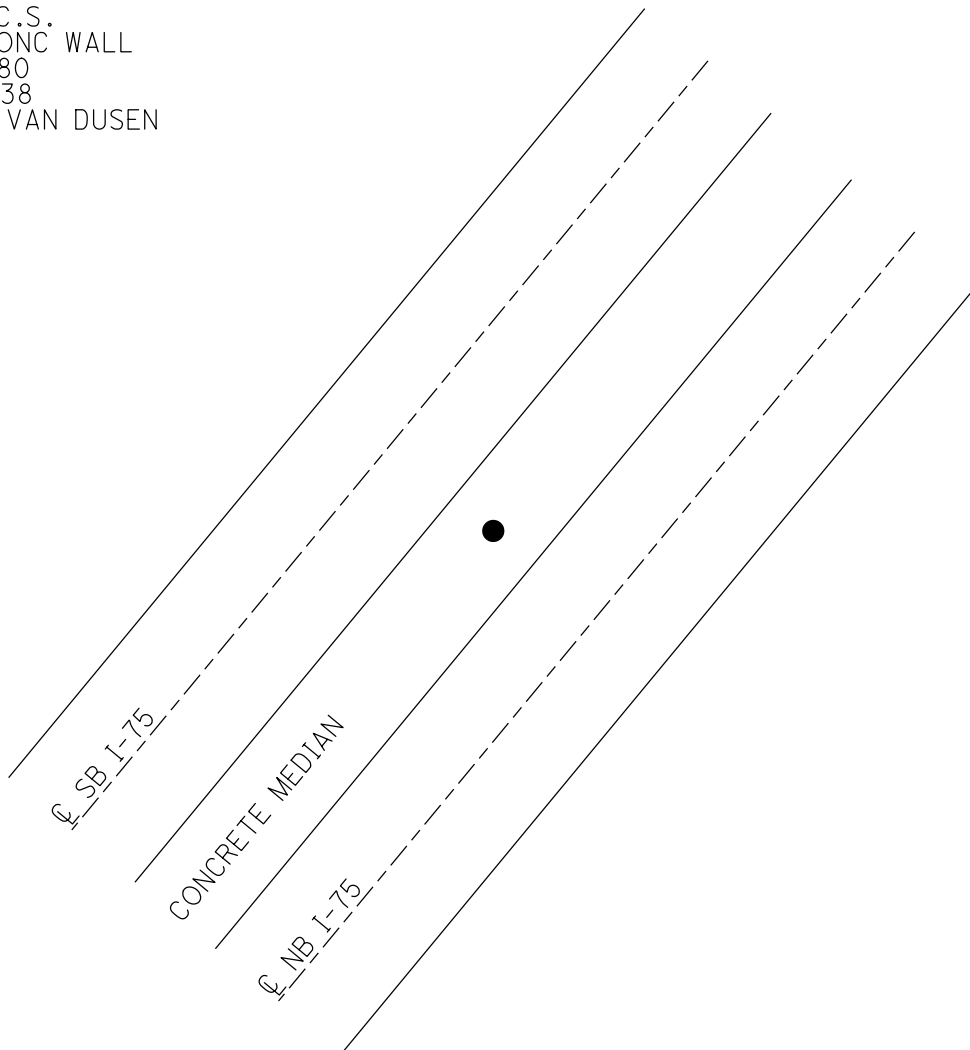
HORIZ.DATUM: _____

GEOID: _____

GRID: NORTHING: _____

EASTING: _____

RECORD: C.S.
IPIN IN CONC WALL
N: 51005.80
E: 38384.38
1/30/98, VAN DUSEN



O.D.O.T. DISTRICT 2 SURVEY OFFICE (USE ONLY)

PERSONNEL _____

REFERENCE NO. _____

SHEET 23 OF 34

NOTES VAN DUSEN

DATE 1/30/98

ROUTE I-75

H.C. MOSE

WEATHER CLOUDY

COUNTY LUCAS

R.C. HUSS

TEMP. 35°

TOWNSHIP CITY OF TOLEDO

SECTION 5

DWG BY NIESE

PID _____

T 9 S R 8 E

TYPE MONUMENT IPIN

ON SURFACE - ~~BELOW~~ ON

OFFSET 0.16' ± : RT

- TO - EDGE PAVEMENT

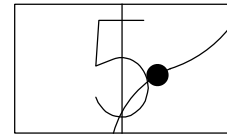
STATION: 507+05.99

HORZ. DATUM: NAD83(2011)

GEOID: _____

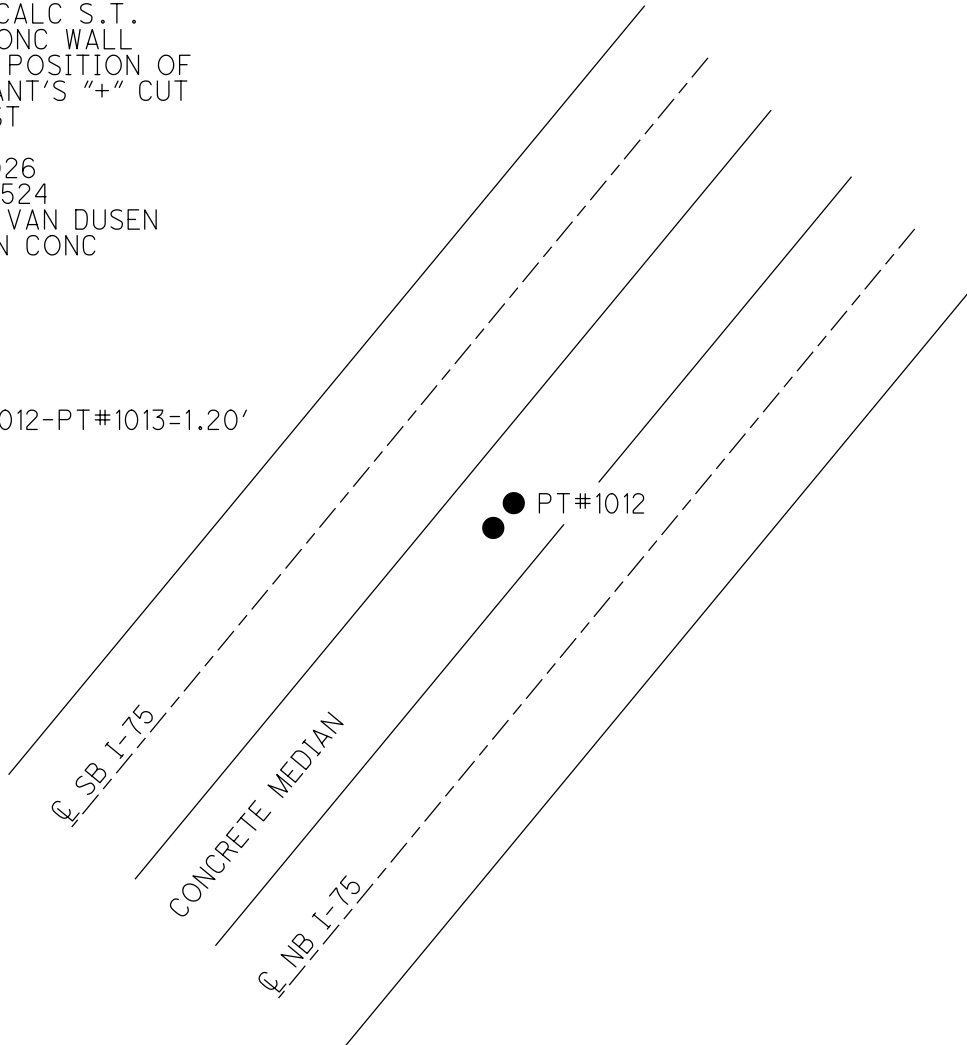
GRID: NORTHING: 751576.170

EASTING: 1696524.136



RECORD: CALC S.T.
 IPIN IN CONC WALL
 ORIGINAL POSITION OF
 CONSULTANT'S "+" CUT
 PRE-CONST
 PT#1013
 N: 51138.026
 E: 38534.524
 1/30/98, VAN DUSEN
 FD IPIN IN CONC
 2015

DIST. PT#1012-PT#1013=1.20'



O.D.O.T. DISTRICT 2 SURVEY OFFICE (USE ONLY)

PERSONNEL

REFERENCE NO. _____

SHEET 24 OF 34

NOTES VAN DUSEN

DATE 1/30/98

ROUTE I-75

H.C. MOSER

WEATHER CLOUDY

COUNTY LUCAS

R.C. HUSS

TEMP. 35°

TOWNSHIP CITY OF TOLEDO

DWG BY NIESE PID _____

SECTION 5

T 9 S R 8 E

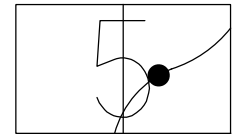
TYPE MONUMENT 1/4" DRILL HOLE

ON SURFACE - ~~BELOW~~ ON

OFFSET \varnothing PAVEMENT 0.17' ~~LT~~ : RT

- TO - EDGE PAVEMENT

STATION: 507+07.22



HORZ.DATUM: NAD83(2011)

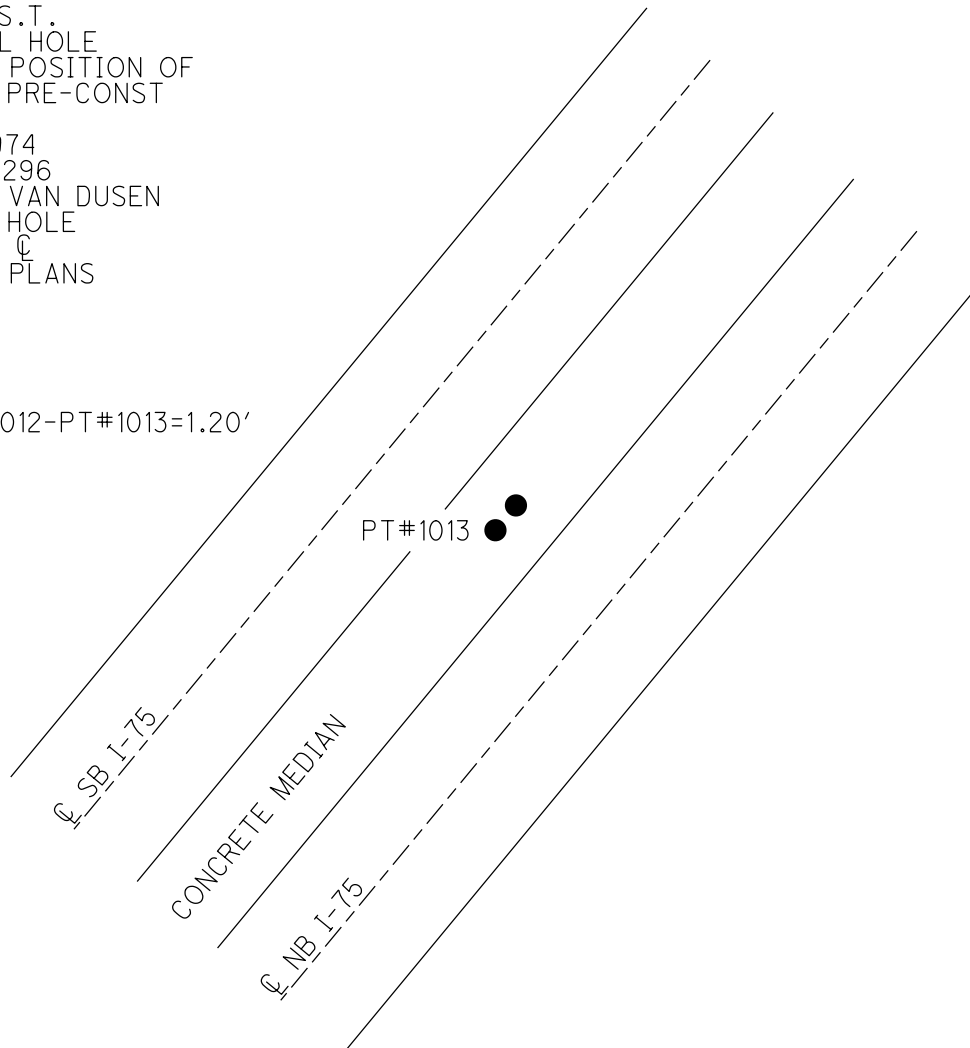
GEOID: _____

GRID: NORTHING: 751576.739

EASTING: 1696525.222

RECORD: S.T.
 1/4" DRILL HOLE
 ORIGINAL POSITION OF
 MONBOX, PRE-CONST
 PT#1012
 N: 51138.974
 E: 38535.296
 1/30/98, VAN DUSEN
 FD DRILL HOLE
 HELD FOR \varnothing
 FOR 2015 PLANS

DIST. PT#1012-PT#1013=1.20'



O.D.O.T. DISTRICT 2 SURVEY OFFICE (USE ONLY)

PERSONNEL

REFERENCE NO. _____

SHEET 25 OF 34

NOTES VAN DUSEN

DATE 1/30/98

ROUTE I-75

H.C. MOSER

WEATHER CLOUDY

COUNTY LUCAS

R.C. HUSS

TEMP. 35°

TOWNSHIP WASHINGTON

SECTION 5

DWG BY NIESE

PID _____

T 9 S R 8 E

TYPE MONUMENT IPIN

ON SURFACE - ~~BELOW~~ ON

OFFSET 0.22' ~~LT~~ : RT

- TO - EDGE PAVEMENT

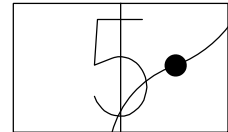
STATION: 512+82.77

HORZ.DATUM: NAD83(2011)

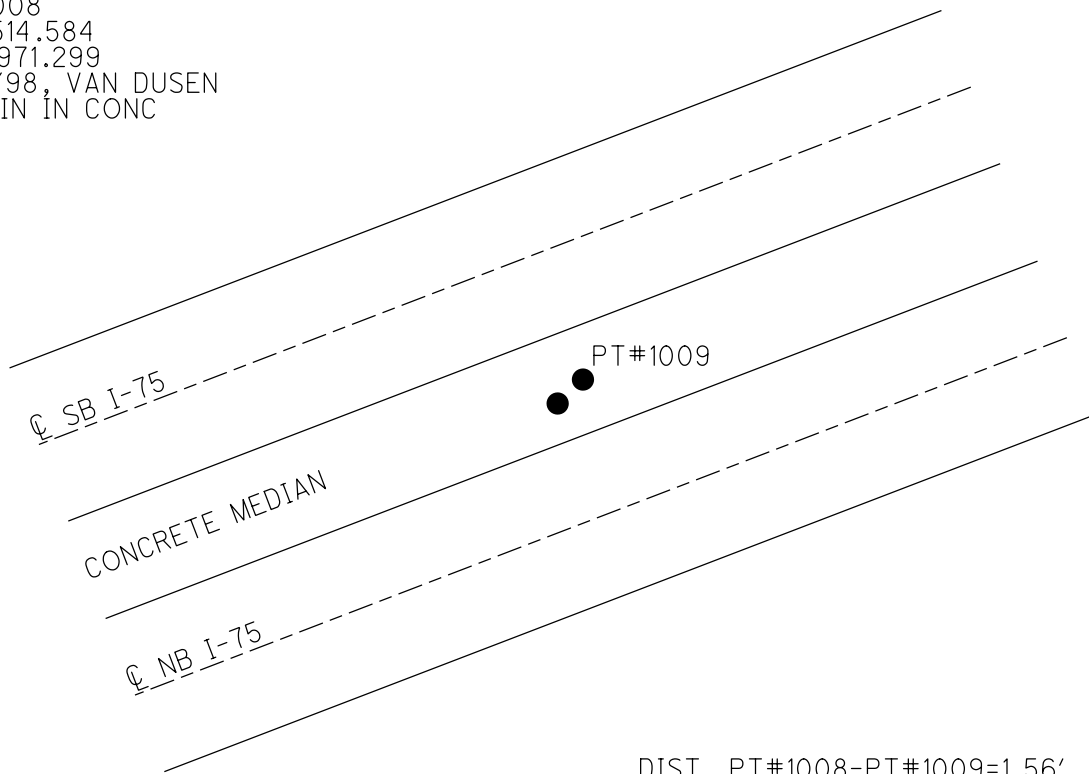
GEOID: _____

GRID: NORTHING: 751848.252

EASTING: 1697032.710



RECORD: CALC T.S.
IPIN IN CONC WALL
ORIGINAL POSITION OF
CONSULTANT'S "+" CUT
PRE-CONST
PT#1008
N: 51514.584
E: 38971.299
1/30/98, VAN DUSEN
FD IPIN IN CONC
2015

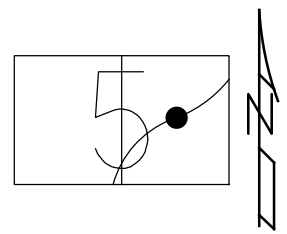


DIST. PT#1008-PT#1009=1.56'

O.D.O.T. DISTRICT 2 SURVEY OFFICE (USE ONLY)

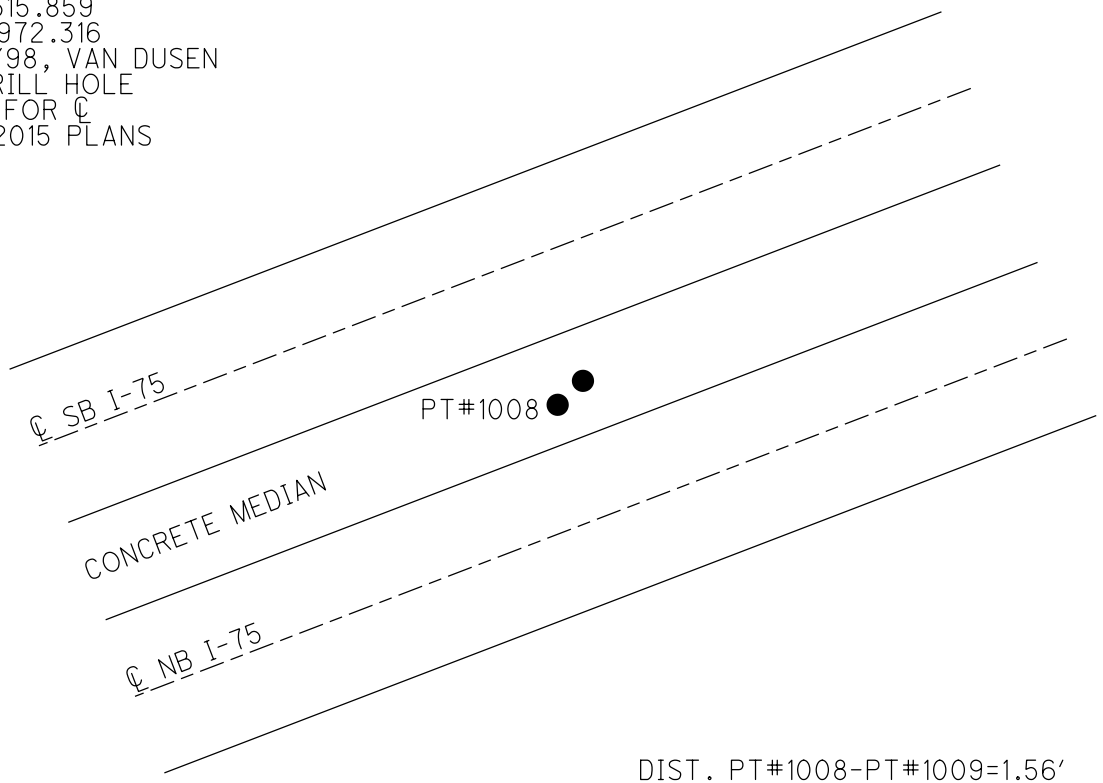
PERSONNEL	REFERENCE NO. _____	SHEET <u>26</u> OF <u>34</u>
NOTES <u>VAN DUSEN</u>	DATE <u>1/30/98</u>	ROUTE <u>I-75</u>
H.C. <u>MOSER</u>	WEATHER <u>CLOUDY</u>	COUNTY <u>LUCAS</u>
R.C. <u>HUSS</u>	TEMP. <u>35°</u>	TOWNSHIP <u>WASHINGTON</u>
DWG BY <u>NIESE</u>	PID _____	SECTION <u>5</u>
		T <u>9</u> S R <u>8</u> E

TYPE MONUMENT 1/4" DRILL HOLE
 ON SURFACE - ~~BELOW~~ ON
 OFFSET ☉ PAVEMENT ON LT : RT
- TO - EDGE PAVEMENT
 STATION: 512+84.39



HORZ.DATUM: NAD83(2011) GEOID: _____
 GRID: NORTHING: 751848.212 EASTING: 1697034.037

RECORD: T.S.
 1/4" DRILL HOLE
 ORIGINAL POSITION OF
 MONBOX, PRE-CONST
 PT#1009
 N: 51515.859
 E: 38972.316
 1/30/98, VAN DUSEN
 FD DRILL HOLE
 HELD FOR ☉
 FOR 2015 PLANS



O.D.O.T. DISTRICT 2 SURVEY OFFICE (USE ONLY)

PERSONNEL

REFERENCE NO. _____

SHEET 27 OF 34

NOTES VAN DUSEN

DATE 1/30/98

ROUTE I-75

H.C. MOSER

WEATHER CLOUDY

COUNTY LUCAS

R.C. HUSS

TEMP. 35°

TOWNSHIP WASHINGTON

DWG BY NIESE PID _____

SECTION 5

T 9 S R 8 E

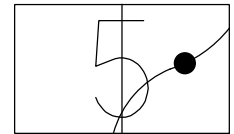
TYPE MONUMENT IPIN

ON SURFACE - ~~BELOW~~ ON

OFFSET \varnothing PAVEMENT ON LT : RT

- TO - EDGE PAVEMENT

STATION: 514+83.52



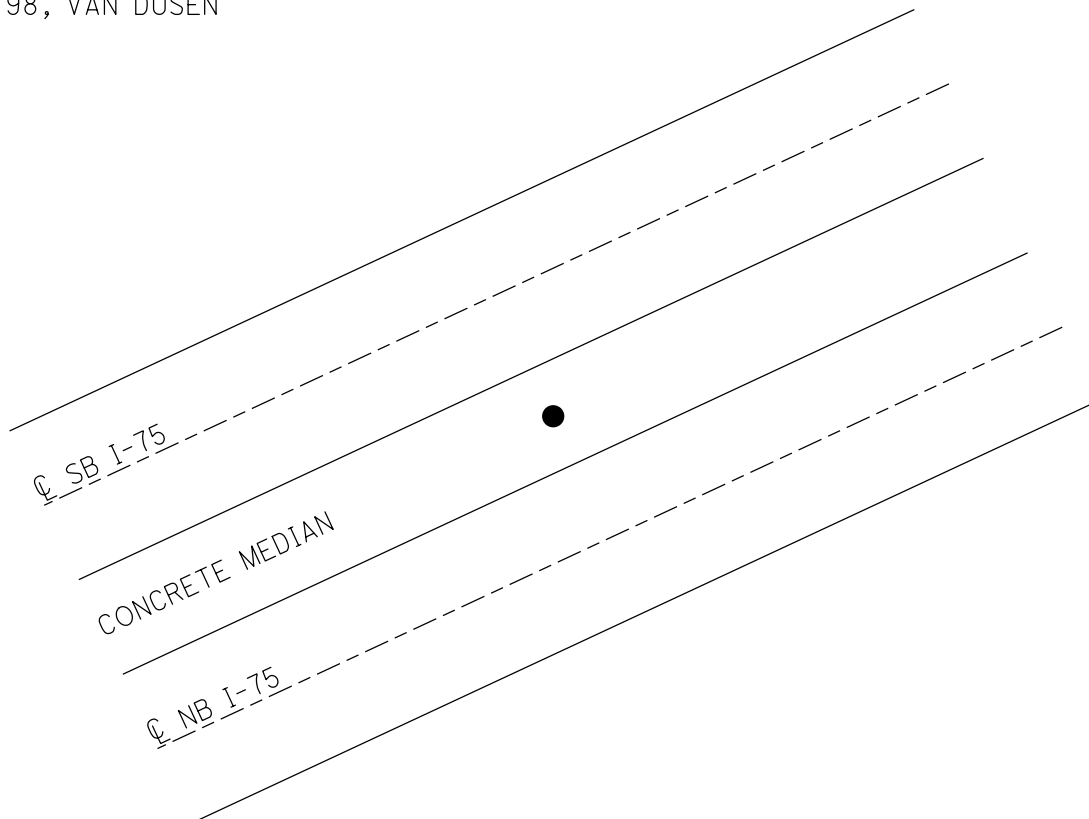
HORZ.DATUM: _____

GEOID: _____

GRID: NORTHING: _____

EASTING: _____

RECORD: S.C.
IPIN IN CONC WALL
N: 51647.00
E: 39121.06
1/30/98, VAN DUSEN



O.D.O.T. DISTRICT 2 SURVEY OFFICE (USE ONLY)

PERSONNEL

REFERENCE NO. _____

SHEET 28 OF 34

NOTES VAN DUSEN

DATE 1/30/98

ROUTE I-75

H.C. MOSER

WEATHER CLOUDY

COUNTY LUCAS

R.C. HUSS

TEMP. 35°

TOWNSHIP WASHINGTON

SECTION 5

DWG BY NIESE PID _____

T 9 S R 8 E

TYPE MONUMENT 1/4" DRILL HOLE

ON SURFACE - ~~BELOW~~ ON

OFFSET 0 PAVEMENT _____ LT : RT

- TO - EDGE PAVEMENT

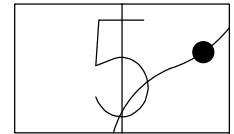
STATION: _____

HORZ. DATUM: _____

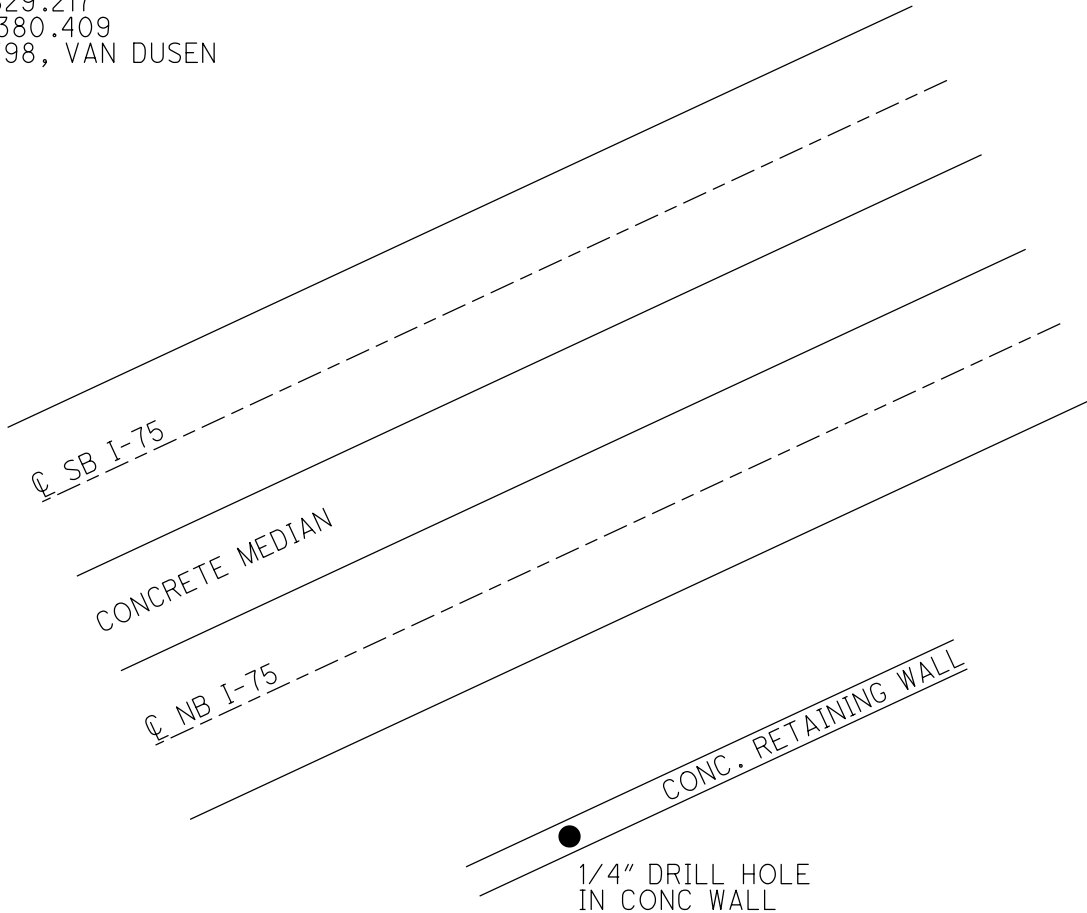
GEOID: _____

GRID: NORTHING: _____

EASTING: _____



RECORD:
1/4" DRILL HOLE
IN RETAINING WALL
PT#1003
N: 51829.217
E: 39380.409
1/30/98, VAN DUSEN



O.D.O.T. DISTRICT 2 SURVEY OFFICE (USE ONLY)

PERSONNEL

REFERENCE NO. _____

SHEET 29 OF 34

NOTES VAN DUSEN

DATE 1/30/98

ROUTE I-75

H.C. MOSER

WEATHER CLOUDY

COUNTY LUCAS

R.C. HUSS

TEMP. 35°

TOWNSHIP WASHINGTON

SECTION 5

DWG BY NIESE

PID _____

T 9 S R 8 E

TYPE MONUMENT 1/4" DRILL HOLE

ON SURFACE - ~~BELOW~~ ON

OFFSET Q PAVEMENT _____ LT : RT

- TO - EDGE PAVEMENT

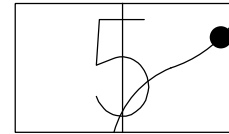
STATION: _____

HORZ. DATUM: _____

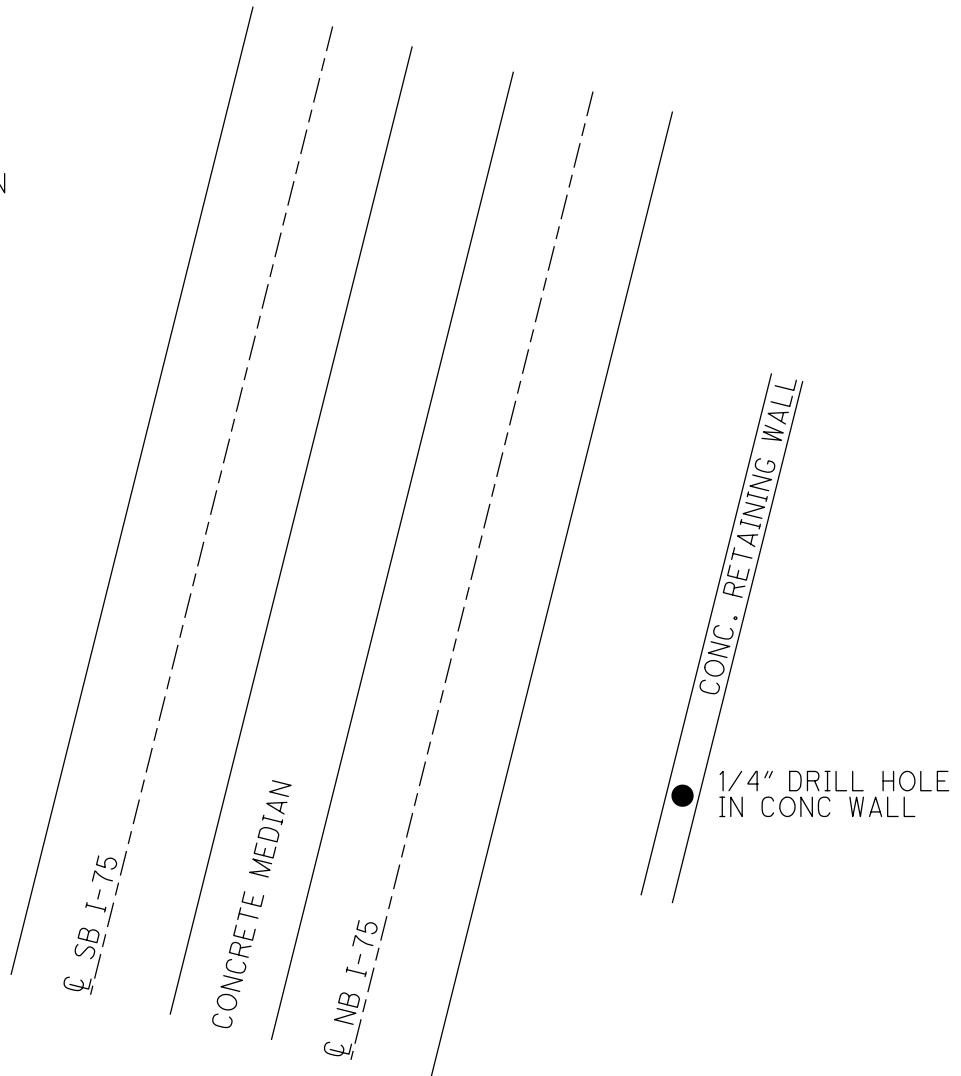
GEOID: _____

GRID: NORTHING: _____

EASTING: _____



RECORD:
1/4" DRILL HOLE
IN RETAINING WALL
PT#1002
N: 52841.873
E: 39959.614
1/30/98, VAN DUSEN



O.D.O.T. DISTRICT 2 SURVEY OFFICE (USE ONLY)

PERSONNEL _____

REFERENCE NO. _____

SHEET 30 OF 34

NOTES VAN DUSEN

DATE 1/30/98

ROUTE I-75

H.C. MOSER

WEATHER CLOUDY

COUNTY LUCAS

R.C. HUSS

TEMP. 35°

TOWNSHIP WASHINGTON

SECTION 4

DWG BY NIESE PID _____

T 9 S R 8 E

TYPE MONUMENT 1/4" DRILL HOLE

ON SURFACE - ~~BELOW~~ ON _____

OFFSET ϕ PAVEMENT _____ LT : RT

- TO - EDGE PAVEMENT

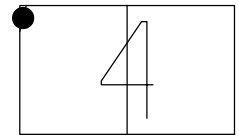
STATION: _____

HORZ. DATUM: _____

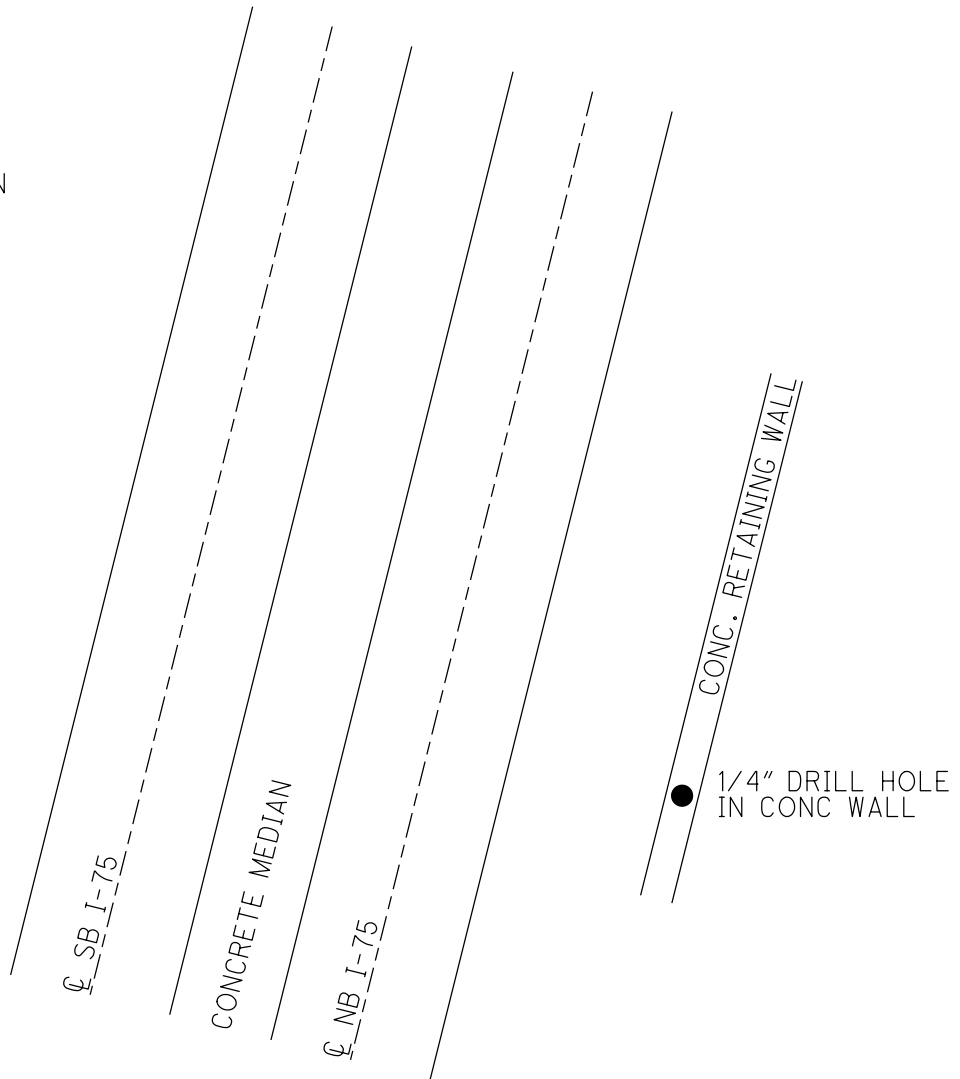
GEOID: _____

GRID: NORTHING: _____

EASTING: _____



RECORD:
1/4" DRILL HOLE
IN RETAINING WALL
PT#1000
N: 53543.140
E: 40098.579
1/30/98, VAN DUSEN



O.D.O.T. DISTRICT 2 SURVEY OFFICE (USE ONLY)

PERSONNEL

REFERENCE NO. _____

SHEET 31 OF 34

NOTES VAN DUSEN

DATE 1/30/98

ROUTE I-75

H.C. MOSER

WEATHER CLOUDY

COUNTY LUCAS

R.C. HUSS

TEMP. 35°

TOWNSHIP WASHINGTON

DWG BY NIESE

PID _____

SECTION 4

T 9 S R 8 E

TYPE MONUMENT P.K. NAIL

ON SURFACE - ~~BELOW~~ ON

OFFSET 0 PAVEMENT _____ LT : RT

- TO - EDGE PAVEMENT

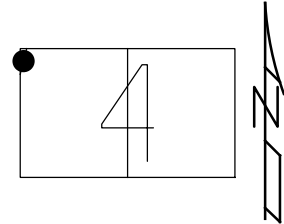
STATION: 537+46.31

HORIZ.DATUM: _____

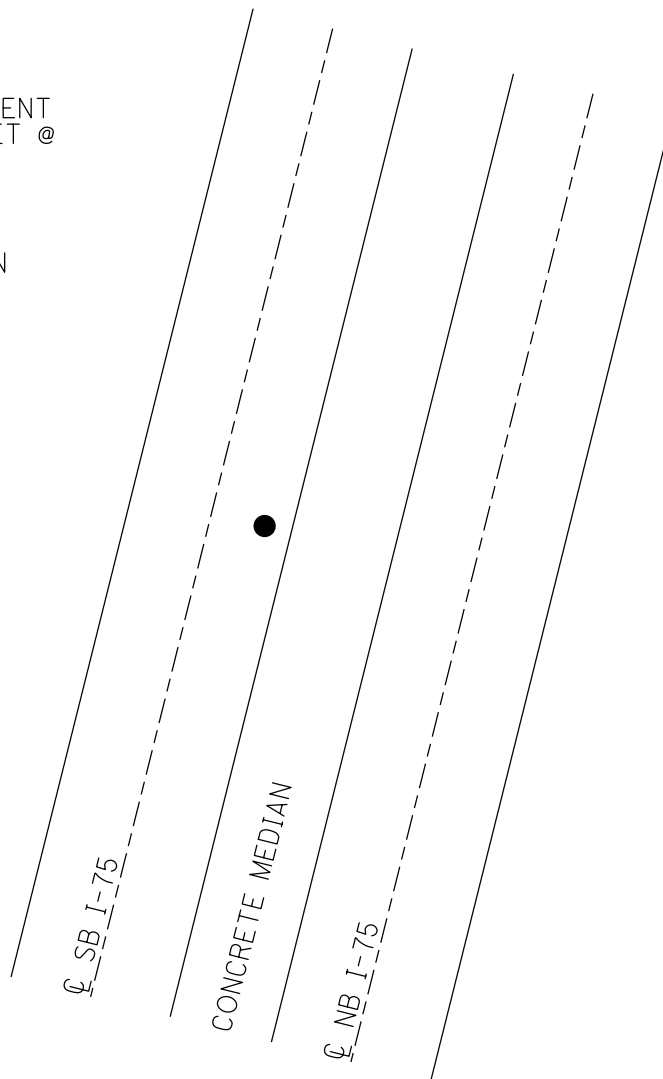
GEOID: _____

GRID: NORTHING: _____

EASTING: _____



RECORD: C.S.
FD P.K. NAIL IN
PAVEMENT WITH 2
CROSS TIES. MONUMENT
PROBABLY TO BE SET @
A LATER DATE.
ON 0 SURVEY
N: 53651.46
E: 40038.22
1/30/98, VAN DUSEN



O.D.O.T. DISTRICT 2 SURVEY OFFICE (USE ONLY)

PERSONNEL

REFERENCE NO. _____

SHEET 32 OF 34

NOTES VAN DUSEN

DATE 1/30/98

ROUTE I-75

H.C. MOSER

WEATHER CLOUDY

COUNTY LUCAS

R.C. HUSS

TEMP. 35°

TOWNSHIP WASHINGTON

SECTION 4

DWG BY NIESE

PID _____

T 9 S R 8 E

TYPE MONUMENT 1/4" DRILL HOLE

ON SURFACE - ~~BELOW~~ ON

OFFSET ϕ PAVEMENT 0.11' ~~±~~ : RT

- TO - EDGE PAVEMENT

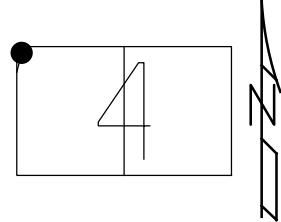
STATION: 539+46.06

HORZ. DATUM: _____

GEOID: _____

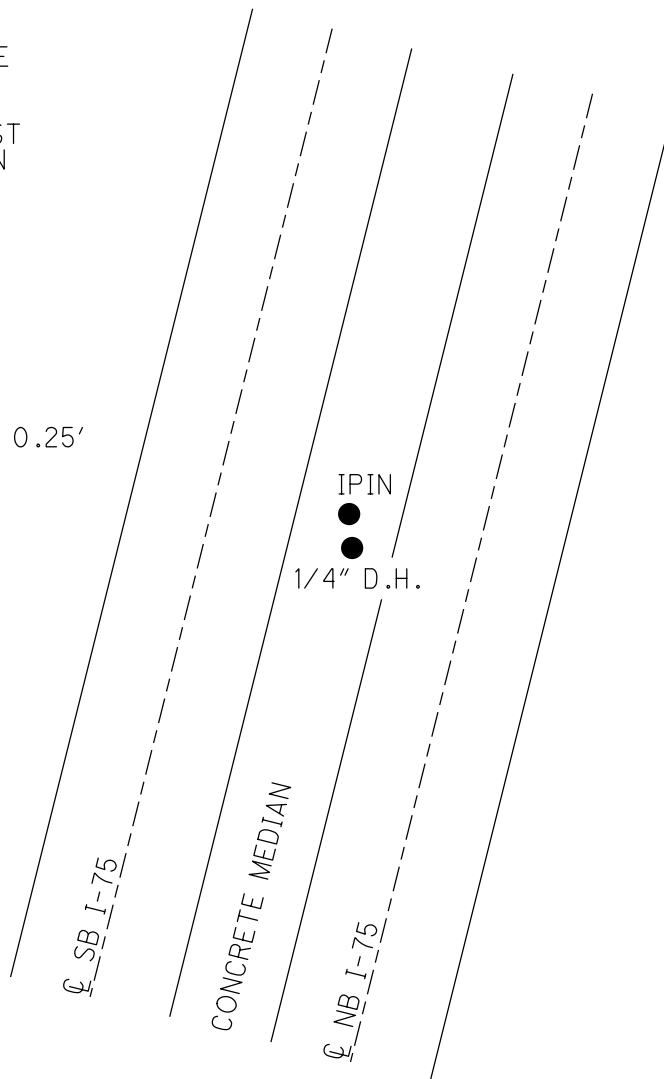
GRID: NORTHING: _____

EASTING: _____



RECORD: S.T.
 SET 1/4" DRILL HOLE
 IN CONC WALL
 ORIGINAL POSITION
 OF IPIN - PRE-CONST
 1/30/98, VAN DUSEN

DIST. IPIN-1/4" D.H.= 0.25'



O.D.O.T. DISTRICT 2 SURVEY OFFICE (USE ONLY)

PERSONNEL

REFERENCE NO. _____

SHEET 33 OF 34

NOTES VAN DUSEN

DATE 1/30/98

ROUTE I-75

H.C. MOSER

WEATHER CLOUDY

COUNTY LUCAS

R.C. HUSS

TEMP. 35°

TOWNSHIP WASHINGTON

SECTION 4

DWG BY NIESE

PID _____

T 9 S R 8 E

TYPE MONUMENT IPIN

ON SURFACE - ~~BELOW~~ ON

OFFSET 0 PAVEMENT ON LT : RT

- TO - EDGE PAVEMENT

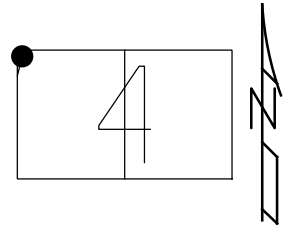
STATION: 539+46.31

HORZ.DATUM: _____

GEOID: _____

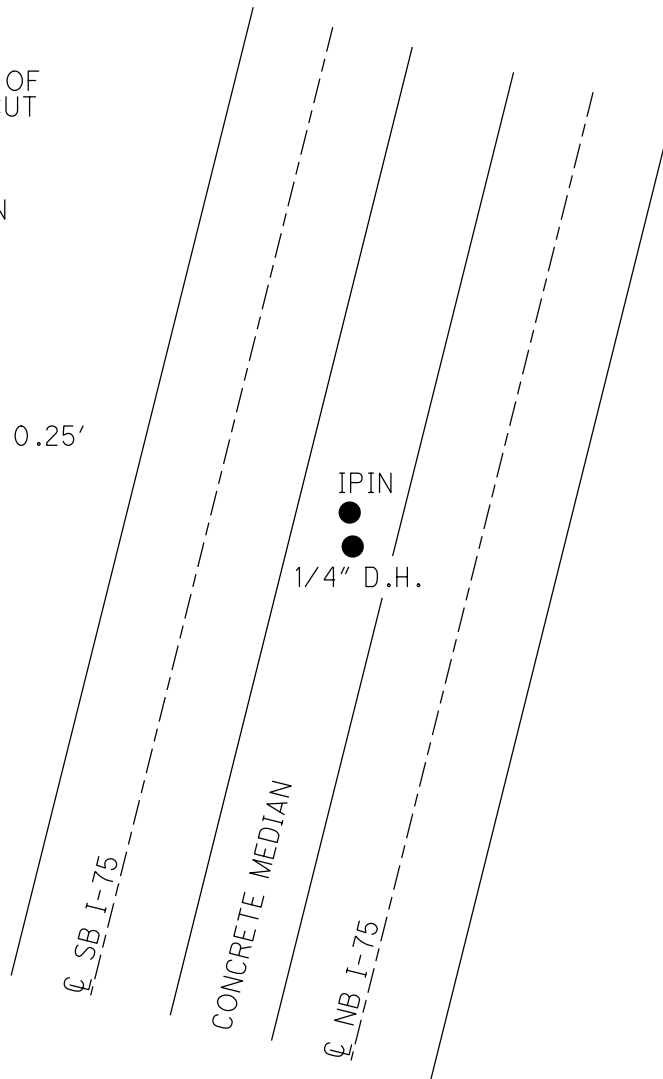
GRID: NORTHING: _____

EASTING: _____



RECORD: S.T.
 IPIN IN CONC WALL
 ORIGINAL POSITION OF
 CONSULTANT'S "+" CUT
 PRE-CONST
 N: 53851.54
 E: 40040.51
 1/30/98, VAN DUSEN

DIST. IPIN-1/4" D.H.= 0.25'



O.D.O.T. DISTRICT 2 SURVEY OFFICE (USE ONLY)

PERSONNEL _____

REFERENCE NO. _____

SHEET 34 OF 34

NOTES VAN DUSEN

DATE 1/30/98

ROUTE I-75

H.C. MOSER

WEATHER CLOUDY

COUNTY LUCAS

R.C. HUSS

TEMP. 35°

TOWNSHIP WASHINGTON

DWG BY NIESE PID _____

SECTION 4

T 9 S R 8 E

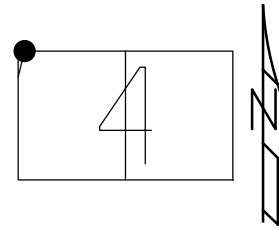
TYPE MONUMENT IPIN

ON SURFACE - ~~BELOW~~ ON

OFFSET Q PAVEMENT ON LT : RT

- TO - EDGE PAVEMENT

STATION: 540+82.21



HORZ.DATUM: _____

GEOID: _____

GRID: NORTHING: _____

EASTING: _____

RECORD: P.O.T.
FD BOAT SPIKE
STA 540+81.76
1970 PLANS
IPIN IN CONC WALL
N: 53987.32
E: 40040.39
1/30/98, VAN DUSEN

MONROE COUNTY
LUCAS COUNTY

MICHIGAN
OHIO

