

LUC-75-1.67 PID 22704 JOB NO. 423540

Section Length 3.15 miles

PE – Julie Fahy Technicians: Joseph Ziemas and Sarah Lenhart

Guardrail Information Required:

ALL Barrier of ANY kind throughout the entire project needs to be located by Station and distance from EOP(white or yellow marking) to face of barrier. If guardrail extends beyond the project limits – pick up the end or beginning of that run of barrier outside the limits.

Barrier includes, but is not limited to the following:

- Guardrail of any type
- Concrete Barrier wall
- Impact Attenuators
- Anchor Assemblies
- Sand Barrels

Please include the Delineator markers – (found in the South Bound lanes?)

Also to be included with this project will be ANY Concrete Barrier walls with end tapered down and/or buried, from Project PID 19340 just north of the above project. The following station numbers and sheets from the 19340 plan are what I know of at this time, but there may be more sites. If so the additional sites should be picked up as well. And as before, located by Station and distance from EOP(white or yellow marking) to face of barrier.

LOCATION:

- a) Sht. 48 NB on right Sta. 251+00 and Sta. 258+00 right and left
- b) Sht. 49 SB Sta. 268+00 right only
- c) Sht. 51 Ramp W-2 Sta. 290+00 left
- d) Sht. 53 SB @ Ramp B-1 Sta. 300+00 left side
- e) not sure what this is???? Sht. 58 SB Sta. 387+00 right and NB Sta. 391+00 left? Are these buried in the back slope?

yes

SURVEY PROJECT CHECKLIST

County Lucas Route-75 SLK #9 SLM 1.69 DATE 10-25-2001 6-3-2002
 SJN PID 22704 REQUESTED BY JLU FAYT
 Deadline for Completion of Fieldwork _____ PREPARED BY: _____
 Description of Project _____
 Additional Right-of-Way to be purchased: No _____ Yes _____ How Much R/W _____
 LIMITS OF PROJECT: Begin _____ End _____ Left _____ Right _____

INFORMATION NEEDED

~~REQUIRED COMPLETED COMMENTS~~

- SUPERELEVATION)
 STA 155+00 to 240+00 Southbound / Northbound
 every 50' break pts lane lanes, Barrier
 - All guardrail location
 - BRIDGE CLEARANCES
 - (ARCH BASIS LOCATIONS)
 - RAMP FULL TPO: Collingwood (on / off); DETAIL OFF
 RAMP Southbound / Northbound; MONITOR ON RAMP Northbound;
 WASHINGTON OFF RAMP - Survey to Bridge; If street,
 - CONCRETE SLOPE UNDER WASHINGTON EXIT
 - RAMP PAVEMENT LANE - WIDTH, LENGTH AND STATIONING
 - BANQUET OFF RAMP; DETAIL ON RAMP NB AND SB

RESEARCH:

- Area Map
- Benchmarks
- Centerline Control
- Construction Plans
- Deeds
- Easements
- ODOT Surveys
- Plats
- Property Surveys
- Right-of-Way Plans
- Tax Maps

FIELDWORK

REQUIRED COMPLETED

- Locate Centerline Control
- Set Centerline Stations
- Set Instrument Stations
- Set X-Y-Z Coordinates
- Reference C/L Control
- Locate Section Lines
- Locate Property Lines
- Set - Locate Right-of-Way
- Locate Benchmarks
- Set New Benchmarks
- Run Level Circuit
- Cross-section Interval
- Bad Pavement-Type-Location
- Bridges-Structures-Type
- Cable T.V. Lines - Elevation
- Cable T.V. Poles

LOCATE ALL UNDERGROUND UTILITIES

- Electric
- Cable T.V.
- Oil lines
- Sanitary sewers
- Telephone
- Gas lines
- Water lines
- Storm sewers

NAME OF COMPANY

CONTACT PERSON

ADDRESS--TELEPHONE

Copy of Field Notes Delivered to: _____
 INVENTORY OF EQUIPMENT: check to be sure you have everything you need!!!

Date _____ By _____

- Catchbasins-Type-Condition
- Curbs - Type
- Drives - Type - Surface
- Electric Power Poles
- Flowlines of all Pipe
- Fence - Type
- Guardrail-Type
- Headwalls-Type - Condition
- Houses - Buildings - Size - Type
- Pavement - Berms - Shoulders
- Power Lines - Elevation
- Sign Inventory
- Telephone Lines - Elevation
- Telephone Poles - Pedestals
- Trees & Shrubs - Size - Type
- Vertical Clearance
- Waterways - Name - Direction

REQUIRED COMPLETED

OHIO DEPARTMENT OF TRANSPORTATION

SHEET NO. 185

PERSONNEL TITLE PERSONNEL TITLE

PERSONNEL TITLE

BARWISEL

PERSONNEL TITLE

COUNTY Lucas

S.R. I-75

SEC. 1.67

TEMP + 55°

WEATHER SUNNY

DATE 11-23-01

JOB NO. 423540

CENTER LINE RIGHT

DESCRIPTION

X-Y-Z OF CONTROL STATIONS W/REBOUND

LEFT

CENTER LINE

RIGHT

CONTROL STATION

CONTROL STATION

#1 N = 87141.669
E = 90397.071
ELEV = 602.30

#10 N = 90160.625
E = 86163.017
ELEV = 601.09

#2 N = 87247.044
E = 89987.295
ELEV = 592.54

#11 N = 90426.552
E = 86060.745
ELEV = 594.35

#3 N = 88484.385
E = 88519.918
ELEV = 594.60

#12 N = 90680.957
E = 86015.706
ELEV = 591.38

#4 N = 88701.032
E = 88266.765
ELEV = 609.50

#13 N = 91005.767
E = 86018.332
ELEV = 593.38

#5 N = 88978.065
E = 87837.214
ELEV = 607.76

#14 N = 91462.296
E = 86031.684
ELEV = 602.59

#6 N = 89135.683
E = 87465.620
ELEV = 599.33

#15 N = 91755.627
E = 85970.259
ELEV = 597.79

#7 N = 89361.103
E = 87019.463
ELEV = 603.11

#16 N = 92060.193
E = 85920.345
ELEV = 615.00

#8 N = 89505.724
E = 86768.351
ELEV = 603.91

#17 N = 92414.250
E = 85669.318
ELEV = 614.21

#9 N = 89797.461
E = 86400.850
ELEV = 602.86

#18 N = 92671.320
E = 85326.331
ELEV = 602.45

ADJUSTED COORDINATES

OHIO DEPARTMENT OF TRANSPORTATION

SHEET NO. 2 of 5

PERSONNEL	TITLE	PERSONNEL	TITLE
BRANNISSEL	III		
DESCRIPTION			
X-Y-Z OF CONTROL STATIONS			
NORTHBOUND			
SEC.	1.67		
S.R.	I-75		
COUNTY	LUCAS		
DATE	11-23-01	WEATHER	SUNNY
TEMP	+55°	JOB NO.	423540

CONTROL STATION #19
 N = 93159.571
 E = 85165.746
 ELEV = 613.66

ADJUSTED
 COORDINATES

CONTROL STATION #20
 N = 92837.243
 E = 85003.272
 ELEV = 596.78

#21
 N = 93008.295
 E = 84821.505
 ELEV = 598.96

#22
 N = 93165.881
 E = 84492.529
 ELEV = 599.15

#23
 N = 93395.161
 E = 84136.329
 ELEV = 606.71

#24
 N = 93661.190
 E = 83896.953
 ELEV = 613.34

#25
 N = 93817.134
 E = 83776.073
 ELEV = 599.07

#26
 N = 94131.587
 E = 83664.390
 ELEV = 590.20

#27
 N = 94514.095
 E = 83518.659
 ELEV = 599.07

OHIO DEPARTMENT OF TRANSPORTATION

SHEET NO. 3 of 5

PERSONNEL	TITLE	PERSONNEL	TITLE
PERSONNEL	TITLE	PERSONNEL	TITLE
DESCRIPTION	X-Y-Z	DESCRIPTION	X-Y-Z
OF CONTROL STATIONS		OF CONTROL STATIONS	
SOUTHBOURD		SOUTHBOURD	
JOB NO. 42354D		JOB NO. 42354D	
DATE	11-23-01	DATE	11-23-01
WEATHER	SUNNY	WEATHER	SUNNY
TEMP	+55°	TEMP	+55°
COUNTY	LUCAS	COUNTY	LUCAS
S.R.	I-75	S.R.	I-75
SEC.	1.67	SEC.	1.67

RIGHT CENTER LINE LEFT

CONTROL STATION

CONTROL STATION

"A" N = 94109.062
E = 83455.750
ELEV = 600.33

"J" N = 91583.073
E = 85834.958
ELEV = 589.75

"B" N = 93912.406
E = 83511.197
ELEV = 602.76

"K" N = 91167.190
E = 85818.115
ELEV = 601.99

"C" N = 93596.397
E = 83667.046
ELEV = 608.06

"L" N = 90782.573
E = 85835.642
ELEV = 600.21

"D" N = 93246.458
E = 83952.623
ELEV = 610.14

"M" N = 90407.765
E = 85857.287
ELEV = 606.13

"E" N = 93006.644
E = 84369.969
ELEV = 605.06

"N" N = 89986.639
E = 85985.199
ELEV = 607.47

"F" N = 92832.889
E = 84719.582
ELEV = 594.86

"O" N = 89638.170
E = 86227.447
ELEV = 613.99

"G" N = 92614.612
E = 85058.328
ELEV = 601.35

"P" N = 89468.225
E = 86470.695
ELEV = 602.09

"H" N = 92326.857
E = 85427.976
ELEV = 607.03

"Q" N = 89240.520
E = 86806.094
ELEV = 606.24

"I" N = 91962.574
E = 85701.183
ELEV = 603.99

"R" N = 89125.550
E = 87064.388
ELEV = 599.37

Adjusted COORDINATES

OHIO DEPARTMENT OF TRANSPORTATION

SHEET NO. 485

PERSONNEL	TITLE	PERSONNEL	TITLE
BARAHISEL	II	LUCAS	COUNTY
		I-75	S.R.
		1.67	SEC.
DESCRIPTION		STATIONS	
X-Y-Z of Control		SOUTHBOUND	
JOB NO.	423540	RIGHT	
TEMP	+55°	WEATHER	SUNNY
DATE	11-23-01		

Adjusted
COORDINATES

"S"	N = 88929.634 E = 87387.071 ELEV = 606.35
"T"	N = 88759.391 E = 87774.796 ELEV = 595.21
"U"	N = 88592.551 E = 88008.763 ELEV = 603.84
"V"	N = 88454.707 E = 88274.325 ELEV = 594.86
"W"	N = 87924.608 E = 89011.561 ELEV = 591.94
"X"	N = 87802.409 E = 89157.310 ELEV = 590.53
"Y"	N = 87557.281 E = 89334.658 ELEV = 604.74
"Z"	N = 87299.205 E = 89644.303 ELEV = 608.54
"AA1"	N = 87026.584 E = 89652.939 ELEV = 606.63

CONTROL STATION

LEFT CENTER LINE RIGHT

OHIO DEPARTMENT OF TRANSPORTATION

SHEET NO. 585

PERSONNEL	TITLE	PERSONNEL	TITLE	DATE	WEATHER	TEMP	JOB NO.
III				11-23-01	Sunny	+55°	423540

COUNTY Lucas

S.R. I-75

SEC. 1.67

DESCRIPTION X-Y-Z OF BENCH MARKS

CENTER LINE

RIGHT

CITY OF Toledo Bm - DID NOT SHOOT W/ TRAVERSE
 N = TABLET PL. IN CONC. SIGN BASE
 E = D+D ENTERPRISES, S.E. COR. MONAGE
 E = § 17TH ST.
 ELEV = 610.27

#400 ODOT Bm

N = 86766.001
 E = 89886.176
 ELEV = 609.75

#405 A-1 CITY OF Toledo Bm

N = 89629.054
 E = 87810.964
 ELEV = 613.17

#300 ODOT Bm

N = 88843.899
 E = 87584.076
 ELEV = 595.30

#200 ODOT Bm

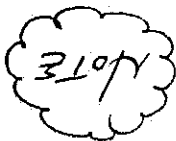
N = 91088.116
 E = 85850.078
 ELEV = 592.90

#404-A CITY OF Toledo Bm

N = 91018.573
 E = 85787.294
 ELEV = 613.65

#916-A CITY OF Toledo Bm

N = 92077.574
 E = 84164.916
 ELEV = 610.54



ELEVATIONS ON "CITY OF Toledo" Bm's ESTABLISHED FOR Luc-75-1.67 project, and does NOT MATCH RECORD ELEVATION BY CITY OF Toledo.

#100 ODOT Bm

N = 93219.184
 E = 84037.423
 ELEV = 599.16

#501-A CITY OF Toledo Bm

N = 94290.119
 E = 83687.035
 ELEV = 608.87

CITY OF Toledo Bm

#502-A / ALSO ODOT Bm #20 FROM PREVIOUS PROJECT

N =
E =

ELEV = 617.26

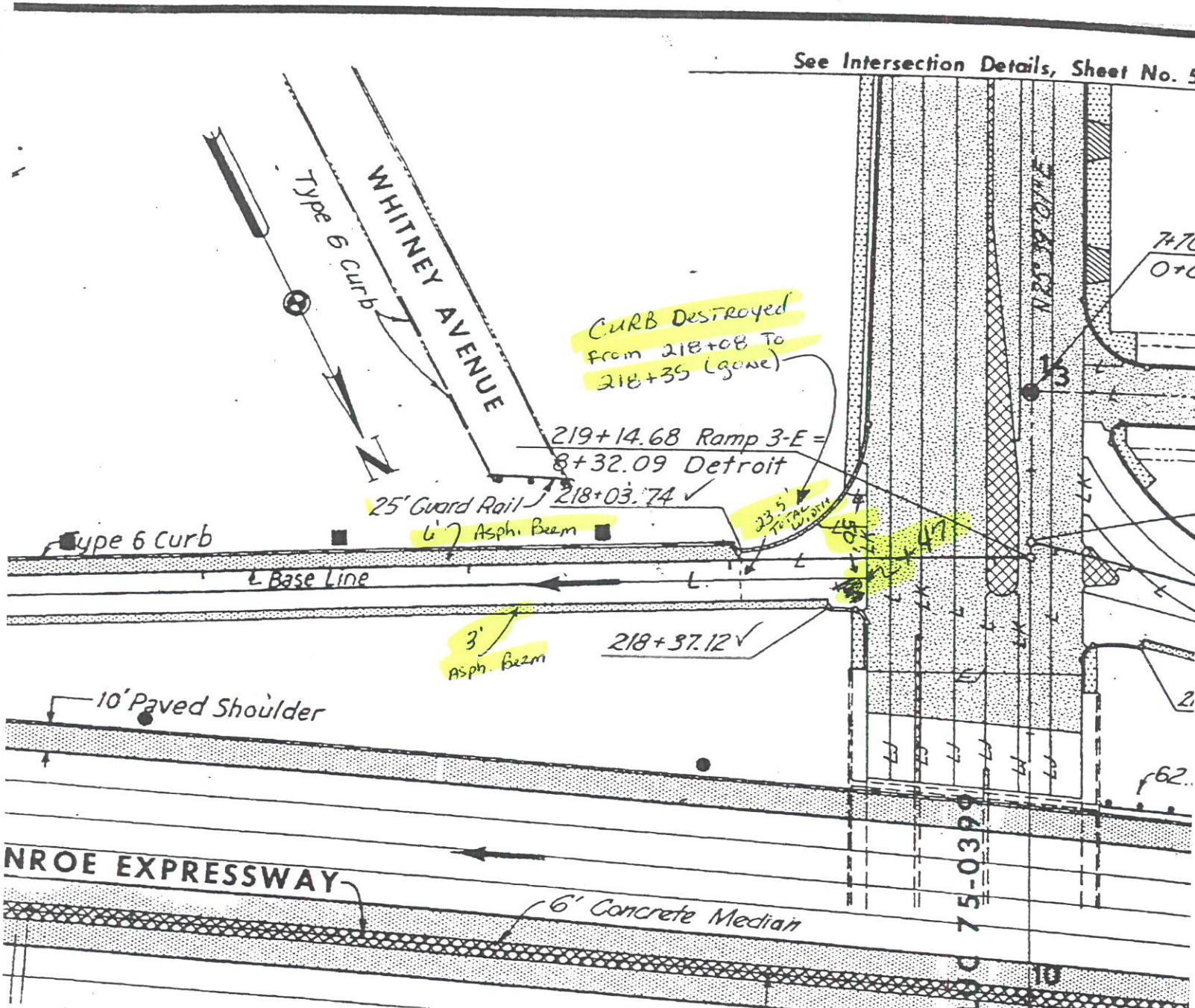
- DID NOT SHOOT W/ TRAVERSE.

- BRASS PLATE PL. S.E. COR. BRIDGE @

CENTRAL AVE & EXPRESSWAY

BARNHISEL □
CANTERBURY TAPE
MALINSKY TAPE

7-3-02
LUC-75-1.67
RAMP 3-E
LAWRENCE AVE
I-75 SBL ON RAMP



NOTE: LOCATE ALL CHANGES IN PAVT WIDTH

TWO-LANE RESURFACING PROGRAM
PAVEMENT DATA

DATE 7-3-02

SHEET _____ OF _____

COUNTY Lucas ROUTE I-75 SECTION 1.67

PAVEMENT MARKINGS:

* = STATION LOCATION

STATION	LANE	OTHERS (SKETCH)	R/R *	*SCHOOL	*ONLY	*↓*	*↘*
BANCKOFF MISC OFF Ramp	—	—	—	—	—	—	—
208+86	LT			*			
208+86	RT			*			
208+97	LT				*		
209+00	RT					*	

STATION AT LEADING EDGE	CROSS WALK	STOP BAR	WIDTH OUT/OUT	LENGTH	CROSS HATCHING SIZE/SPACING	A - ACROSS ROUTE P - PARALLEL TO ROUTE
BANCRIFT NBL	-	-	-	-	-	-
OFF RAMP 3-D	-	-	-	-	-	-
209+09		X	24.5'	2'		A
209+15 DETROIT AVE. SBL ON RAMP 3-E	X		24.5'	10'		A
218+29	X			10'		A

COUNTY Lucas ROUTE 75 SECTION 1.67
 DATE 7-3-02 SHEET OF
 TWO-LANE RESURFACING PROGRAM CROSSWALKS AND STOP BARS

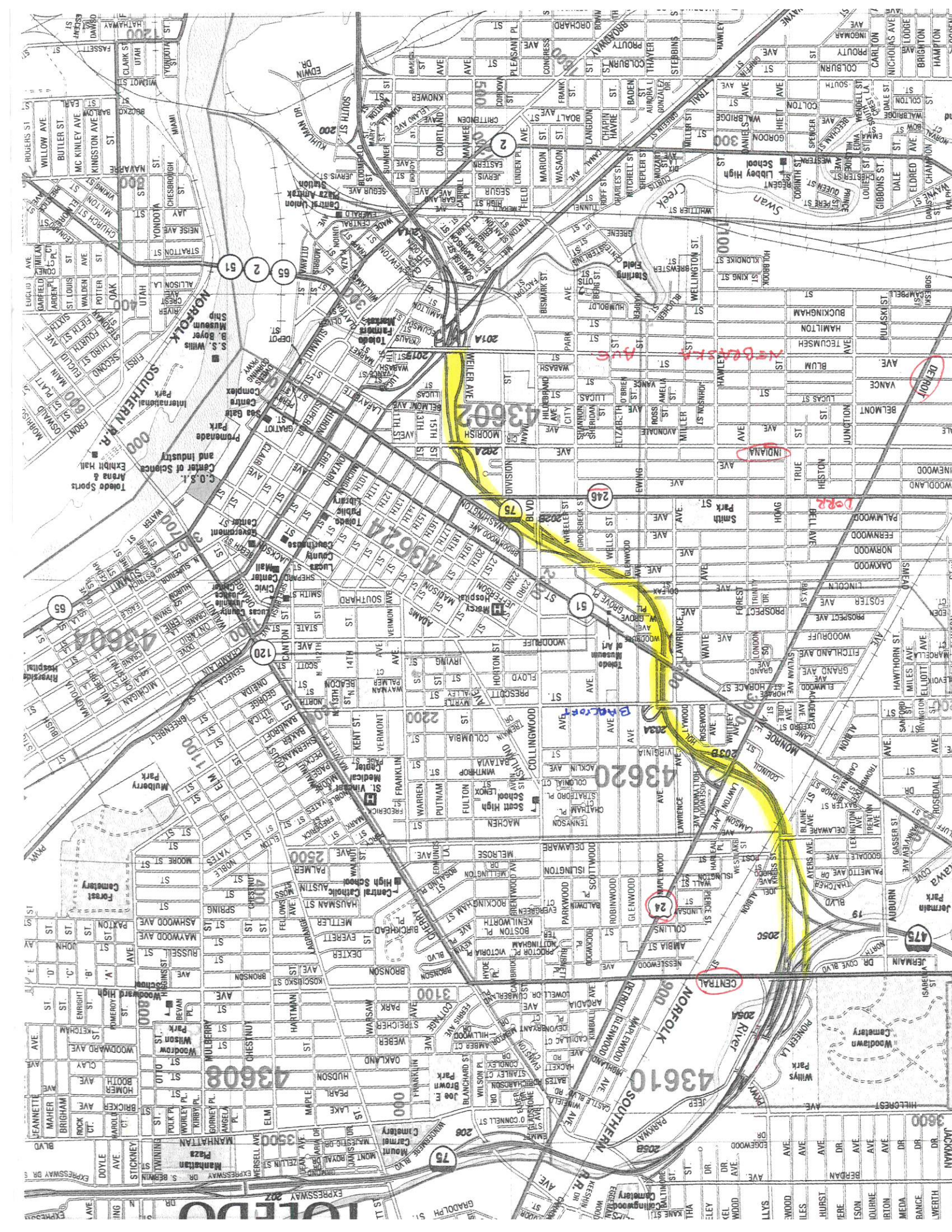
478-3920
841-0087
Sylvia's Glass

125-

- * BM 307 - NEBRASKA
- * BM 309 - INDIANA
- * BM 406 - DORR
- * BM 405A1 or 406 - COLLINGSWOOD
- * BM 405A1 - OAKWOOD
- * BM 405A1 - LINCOLN
- * BM 404A - MORROE
- * BM 916A or 310J-2 - DETROIT
- BM 501A - DELAWARE
- BM 502A - CENTRAL

310.A	BBMP Summit St. Set in concrete wall @ Nrlly end of Toledo Trust Bank on top of wall at the entrance to Seagate Aquarium 150' ± S. of Adams St. Srlly side of Summit St.	Elev. 599.462 1988
310-4	BBMP set in S. E. corner of signal pole foundation @ west corner of Summit St. and Monroe St.	Elev. 585.500
310-3	Monroe & Superior St. Set elev. on Nrlly Anchor Bolt in the Nrlly foundation of 2 concrete foundations for 20" vent pipes in brick island S. W. of intersection	Elev. 589.394
310-1	SW corner Monroe & St. Clair BBMP in traffic controller foundation 30' SW C/L Monroe St. & 53' SE C/L St. Clair	Elev. 587.448
310.	Monroe & Summit Sts. - Srlly corner BBMP set in Nrlly corner of Bostwick & Braun Brick building 0.4' above walk	Elev. 586.449 USGS=585.957 94 NGS=585.30
309.	Monroe & Erie St. - Wrlly corner BBMP set in foundation wall at Ery corner or brick bldg. 1.25' Wrlly of Ery corner of building on Erie St. side of building.	Elev. 592.486 Found 2/5/80
308.		
307.	Nebraska Ave. near Collingwood Blvd. BBMP set in foundation of Gunckel School at left of first step of Nebraska Avenue entrance	Elev. 619.007
306.	Nebraska St. & Ewing St. - Sery corner BBMP set in foundation wall of brick building on Nebraska Avenue side 2.5' E. of NWrlly corner of building (covered by siding)	Elev. 612.672
305.		
304.		

310.B	Cherry & Superior BBMP set in concrete base of traffic signal box Ntly side of Cherry Street	Elev. 610.015 1988
310.C	Michigan & Stry of Cherry BBMP set in step of 618 Michigan (Credit Union) E. end of 2 nd step BBMP in S.E. cor. Cherry & Onida 14' E. of E. curb of Cherry 28' S. of S. curb of Onida	Elev. 596.716 1989
310.D	BBMP Cherry & Bancroft Set in concrete base of § pole N.E. cor.	Elev. 605.400 1989
310.F	BBMP Cherry & Delaware Set in C/L in traffic island S.W. cor. Cherry C/L Delaware	Elev. 607.300 1989
310.G	BBMP Cherry & Kenilworth 12.3' W. of W. curb Cherry St. and 51.1' N. of C/L Kenilworth	Elev. 609.544 1989
310.H	Cherry & Central Set in signal pole foundation S.W. cor. of Cherry & Central	Elev. 604.030 1989
310.I	BBMP Manhattan & Cherry Set in concrete on C/L Manhattan ±, 2' E. of E. walk of Cherry St.	Elev. 604.203
310.J	BBMP Collingwood & Detroit Set in concrete base of traffic light post @ Collingwood & Detroit (E. side of pavement) S. of I-475 bridge	Elev. 590.351
310.J-1	BBMP in conc. @ Detroit & Arcadia in island 6.3' east of walk on E-W centerline of Arcadia	Elev. 612.194
310.J-2	BBMP in foundation of O.B.T. box S. side of Islington west of Detroit	Elev. 610.507
310.K	BBMP Detroit & Sylviana, S.W. cor. 2' W. of Detroit walk 2" S. of Sylviana walk	Elev. 600.826



Norfolk

Norfolk Southern R.R.

Tide Water

Norfolk River

43602

43620

NEBELSKA AVE

DORA

Bhopal

24

25

75

120

43604

43624

43608

43610

43624

43620

43620

43620

43620

43620

43620

43620

43620

43620

43620

43620

43620

43620

43620

43620

43620

43620

43620

43620

43620

43620

43620

43620

43620

43620

43620

43620

43620

43620

43620

43620

43620

43620

43620

43620

43620

43620

43620

43620

43620

43620

43620

43620

43620

43620

43620

43620

43620

43620

43620

43620

43620

43620

43620

43620

43620

43620

43620

43620

43620

43620

43620

43620

43620

43620

43620

43620

43620

43620

43620

43620

43620

43620

43620

43620

43620

43620

43620

43620

43620

43620

43620

43620

43620

43620

43620

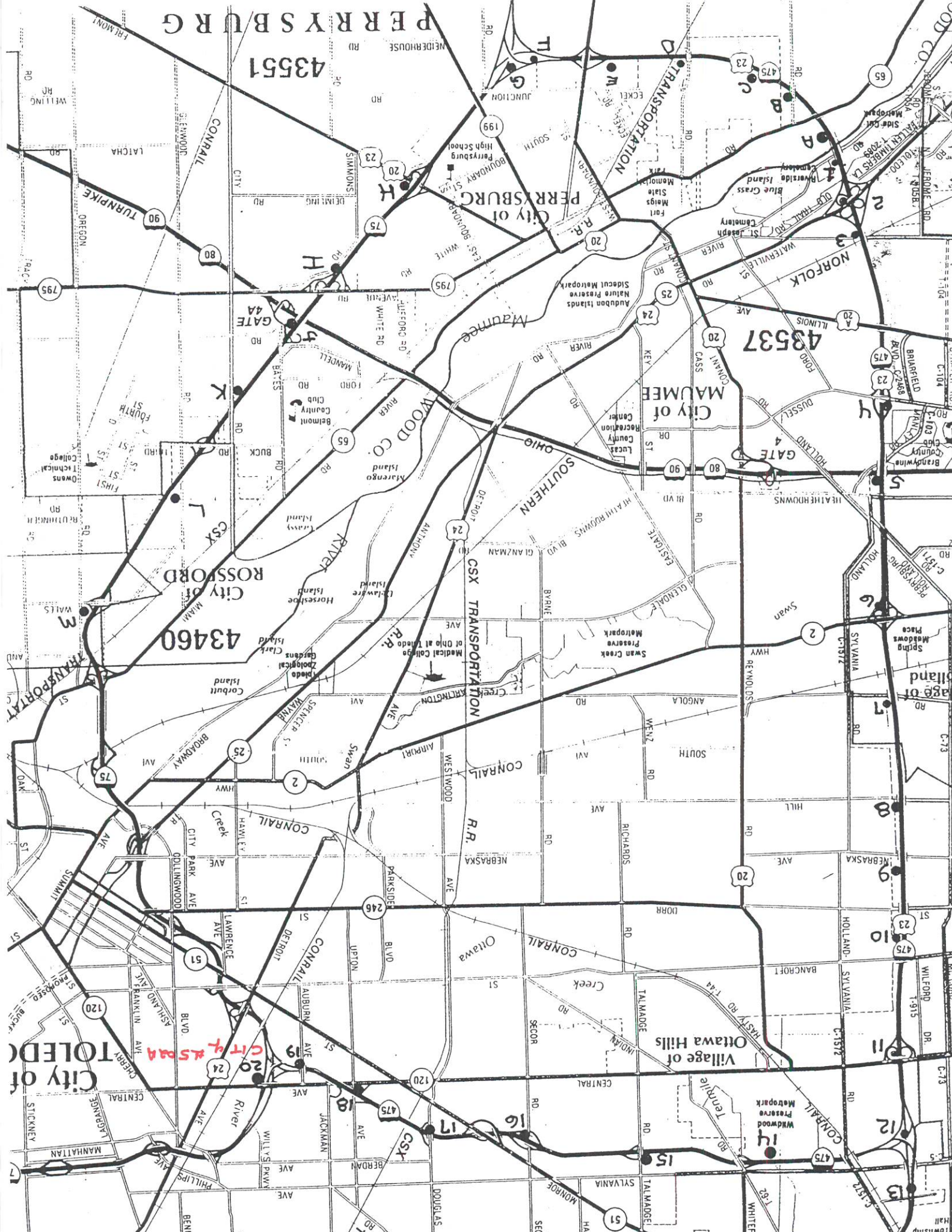
43620

43620

43620

43620

43620



PERRYSBURG

43551

City of PERRYSBURG

48537

City of MAUMEE

City of ROSSFORD

43460

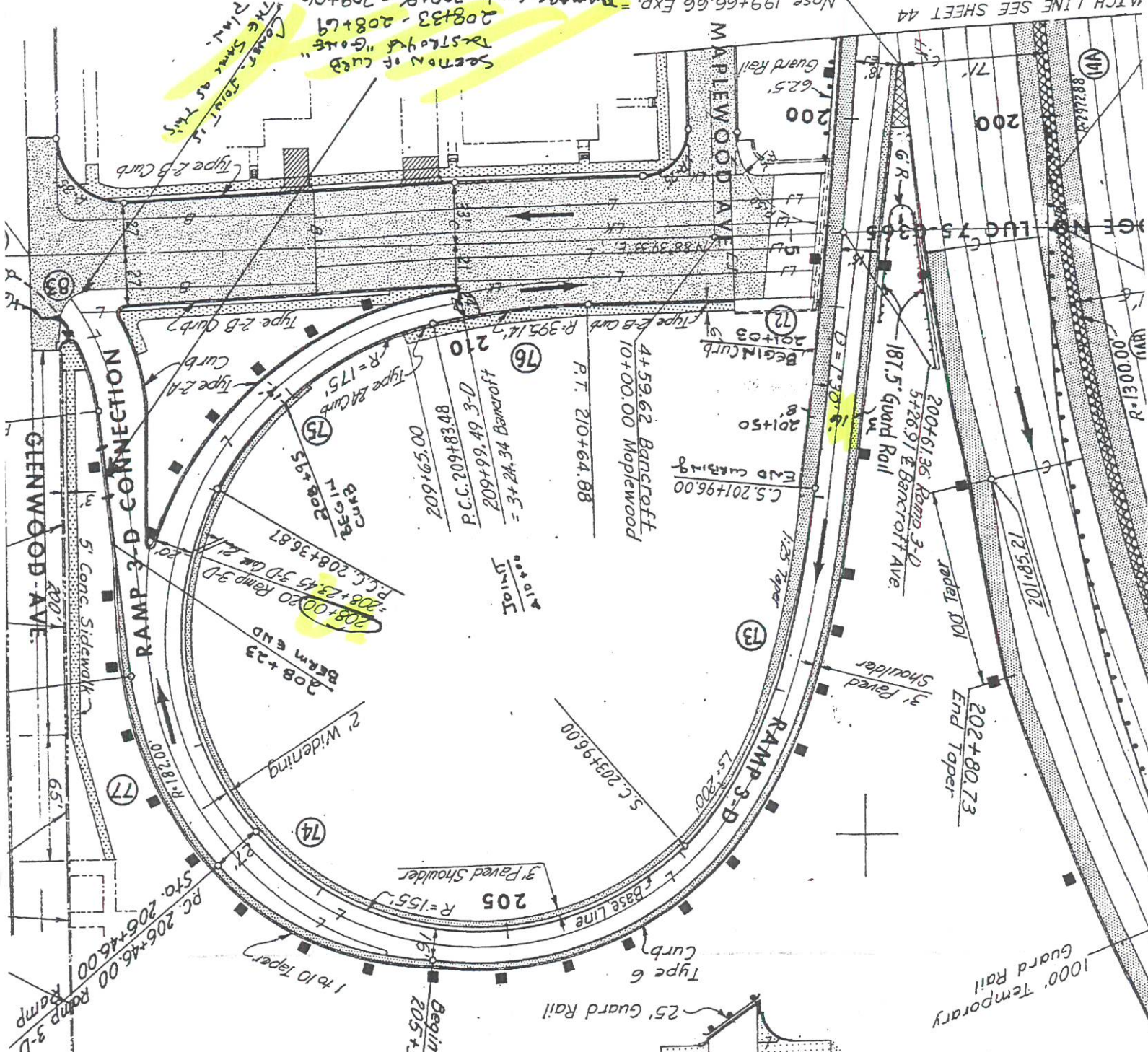
City of TOLEDO

City of ASPMA

Village of Ottawa Hills

MARK	STAMPING	DESCRIPTION
16	LUC-475-1350	<p>ODOT DISK, TOP S.E. CORNER OF CONCRETE PAD FOR EDISON ELECTRIC MANHOLE, 6m EAST OF EAST EDGE PAVEMENT OF SECOR, 29m NORTH OF RAMP TO E.B. I-475, IN THE S.E. QUADRANT OF SECOR AND I-475</p> <p>ELEV. 189.566m</p>
17	LUC-475-1453	<p>ODOT DISK, TOP CONCRETE ISLAND ON DOUGLAS ROAD, 5.9m WEST OF CENTER OF PAVEMENT OF N.B. DOUGLAS ROAD AND 63m SOUTH OF I-475 MEDIAN</p> <p>ELEV. 188.630m</p>
18	LUC-475-1551	<p>ODOT DISK, TOP CENTER OF CONCRETE PARAPET WALL, 0.5m EAST OF WEST END, AT THE S.W. CORNER OF THE E.B. I-475 BRIDGE OVER UPTON AVENUE</p> <p>ELEV. 189.062m</p>
19	LUC-475-1595	<p>ODOT DISK, SET IN SIDEWALK AT THE S.E. CORNER OF THE AUBURN ROAD BRIDGE OVER I-475, 146m SOUTH OF NORTH COVE</p> <p>ELEV. 184.153m</p>
20	no stamping on mark	<p>CITY OF TOLEDO BENCH MARK TABLET, IN CONCRETE BASE OF PARAPET WALL AT THE S.E. END OF THE CENTRAL AVENUE BRIDGE OVER I-75, 28m WEST OF THE INTERSECTION WITH JEEP PARKWAY, IN BRIDGE LUC-475-1642</p> <p>ELEV. 188.142m</p>

City of Toledo
502.A
617.979



Station	Notes	Widths
202+00	CT EB Asph.	7.5'
203+00	CT EB Asph.	7.5'
204+00	CT EB Asph.	7.5'
205+00	CT EB Asph.	7.5'
206+00	CT EB Asph.	7.5'
205+36	CT EB Asph.	7.5'
207+00	CT EB Asph.	7.5'
207+50	CT EB Asph.	7.5'
208+23	CT EB Asph.	7.5'
208+70	CT EB Asph.	7.5'
209+10	CT EB Asph.	7.5'
202+00	CONC. LANES	16'
203+00	CONC. LANES	17'
204+00	CONC. LANES	18'
205+00	CONC. LANES	18'
206+00	CONC. LANES	18'
207+00	CONC. LANES	18.5'
207+50	CONC. LANES	19.2'
208+23	CONC. LANES	19.9'
208+70	CONC. LANES	21.0'
209+10	CONC. LANES	24.5'

RT EB Asp

CONC. LANES

CT EB Asp.

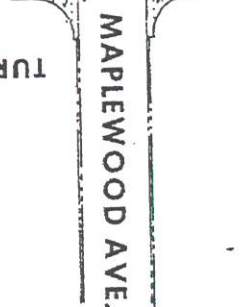
Station

PAV'T WIDTHS

LUG -75-1.67

Sunny + 82'

BRUNNISEL
COURSE BOUND
TAPS
TAPS
MORSE



MAPLEWOOD AVE.

TURNAROUND F

1000' Temporary Guard Rail

202+80.73
End Taper

3' Paved Shoulder

200461.36 Ramp 3-D
5+26.97 @ Bancroft Ave.
187.5' Guard Rail

C.S. 201+96.00
END CURBING
201+50

4+59.62 Bancroft
10+00.00 Maplewood
P.T. 210+64.88

209+99.49 3-D
3+24.34 Bancroft
P.C.C. 209+83.48
209+65.00

208+59.5
REGIN CURB
Type 2A Curb
Type 2-B Curb
Type 2-B Curb

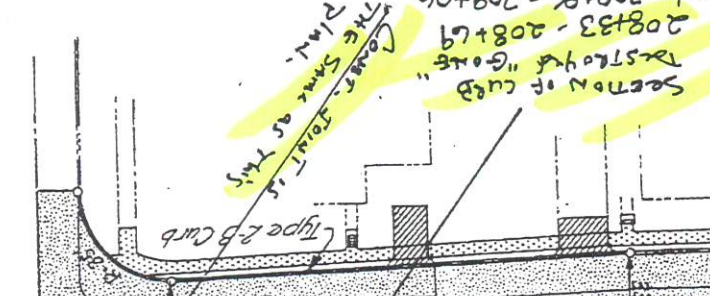
208+00.20 Ramp 3-D
208+23.45 3-D Cur 21'
P.C.C. 208+36.87

208+23
Berm End

5' Conc. Sidewalk
207'

GLENWOOD AVE.

Section of curb
2x5' to 4x6' "Gate"
208+33 - 208+69
209+00 - 209+06
DAMAGE CALL
Cover Joint is
the same as this
plan.



MAPLEWOOD AVE.

Guard Rail

200

200

200

200

200

200

200

200

200

200

200

200

200

200

200

Grant to State 10-21-2002

TWO-LANE RESURFACING PROGRAM

PERSONNEL

DATE

PRIORITY NO.

PART OF SHEET OF

COUNTY LUCAS

ROUTE I-75 SECTION 1.67

BEGIN LOG (SLM) 1.67

TERMINII Erie Street Ramp

END LOG (SLM) 4.83

TERMINIII ~~1.75-2.475~~ 1.75-2.475

TOTAL LENGTH 3.16

MILES

MUNICIPALITY Toledo

BEGIN LOG (SLM)

END LOG (SLM)

MUNICIPALITY

BEGIN LOG (SLM)

END LOG (SLM)

PROPOSED WORK: Need to pick up OUPS

PAVEMENT SHOULDER

OTHER

STATION ESTABLISHED FROM:

OUPS called Monday 10-21-2002 entire length of job. Need utilities for main line + ramps.

STRUCTURES:

NUMBER	STATION	WIDTH	LENGTH	PROPOSED WORK

RAILROAD CROSSING:

NAME STATION NO. TRACKS LENGTH ALONG C L FT

NAME STATION NO. TRACKS LENGTH ALONG C L FT

MISCELLANEOUS:

NO RAISED PAVEMENT MARKERS: EDGE OF PAVEMENT CENTERLINE

NO. MAILBOX APPROACHES

MAILBOX SUPPORTS

REMARKS:

Steve,

Here is an additional request for

~~the I-75 job.~~ Need ~~done~~ ASAP.

If you have any questions,

please call or see me

John

10-22

MIKE-MARC: suggest

you talk with Julie & Stuart

Thursday or Friday to check on which

utilities have called with information.

you will need to locate A/C marked

utilities after you complete 000582/75.

Steve

CONTACT PERSON/ADDITIONAL INFORMATION

CONTRACTOR

CALLER'S NAME

TYPE OF WORK

DATE OF EXCAVATION

START TIME OF EXCAVATION

EXTENT OF WORK FRONT/REAR/BOTH SIDES

DISTANCE FROM INTERSECTION

DIRECTION

INTERSECTING STREETS/ROADS

LOCATION OF WORK - STREET ADDRESS

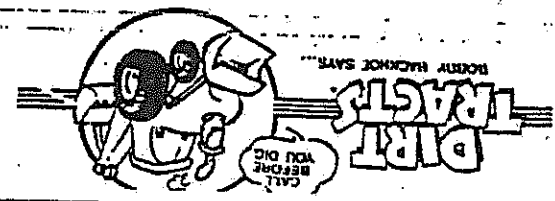
CITY/TOWNSHIP

COUNTY

O.U.P.S. LOCATE WORK ORDER



Ohio Utilities Protection Service
 CALL 2 WORKING DAYS BEFORE YOU DIG - 800-362-2764
COLOR CODES OF UNDERGROUND UTILITIES:
 Red = ELECTRIC POWER Green = SEWER Yellow = GAS Blue = WATER
 Orange = TELEPHONE/CABLE TV



TICKET NUMBER 1021050048
Pat

CONTACT PERSON/ADDITIONAL INFORMATION

CONTRACTOR

14D7-DDDT

CALLER'S NAME

S. Lenhart

TYPE OF WORK

GR and cone barrier replacement & placement

DATE OF EXCAVATION

48 hours 10/23 @ noon

START TIME OF EXCAVATION

NB and SB lanes include ramps w/in project

EXTENT OF WORK FRONT/REAR/BOTH SIDES

NB and SB lanes include

DISTANCE FROM INTERSECTION

3 miles

DIRECTION

INTERSECTING STREETS/ROADS

Begin @ Collingwood Exit

2.91

LOCATION OF WORK - STREET ADDRESS

I-75 NB and SB

1.21

CITY/TOWNSHIP

City of Toledo

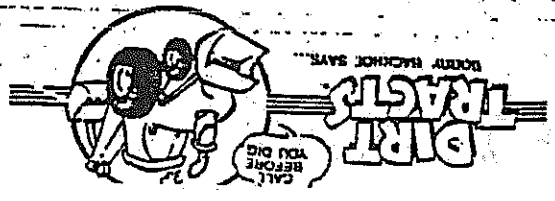
COUNTY

Lucas

O.U.P.S. LOCATE WORK ORDER



Ohio Utilities Protection Service
 CALL 2 WORKING DAYS BEFORE YOU DIG - 800-362-2764
COLOR CODES OF UNDERGROUND UTILITIES:
 Red = ELECTRIC POWER Green = SEWER Yellow = GAS Blue = WATER
 Orange = TELEPHONE/CABLE TV



Order calls
amen
ATT
BP 04
Bucke car
Bucke Pipelines
Cot Gas Bk
Dom dele
KMC dele
Level 3 Com
Transition Ash Pipe
MCI World
Mid Valley Pipe
Dust Com
Saurus Pipe
Top oil
Top Water
Weld Com
Weldment Pipe

LUCAS
I-75
S.L.M. 2.55

DATE	LANE	VERT. CLEAR	REMARKS:
1-9-73	NBL	15.24	@ DORE ST
1-9-73	SBL	19.33	@ DORE ST
8-30-90	NBL	17.60	@ "
8-30-90	SBL	19.00	@ "

LUCAS
I-75 RAMP 2
S.L.M. 2.55

DATE	LANE	VERT. CLEAR	REMARKS:
1-9-73	S.B.	18.18	BY DORE ST
8-30-90	S.B.	18.16	" " "
8-30-90	NB	14.92	14TH ST

LUCAS
I-75
S.L.M. 3.64

DATE	LANE	VERT CLEAR	REMARKS:
6-30-86	N.B.L.	15.27	@ BRANCKROFT ST
6-30-86	S.B.L.	18.25	@ BRANCKROFT ST
8-30-90	N.B.L.	15.14	"
8-30-90	S.B.L.	17.98	"

DATE	LANE	VERT CLEAR	REMARKS:
1-11-73		15.09	BY BRANCKROFT ST

LUCAS
I-75
S.L.M.

DATE	LANE	VERT. CLEAR.	REMARKS
	SBL	16.91	S.B. 75 TO W.B. I-475

LUCAS
I-75 RAMP NCI
S.L.M. 4.83

DATE	LANE	VERT. CLEAR.	REMARKS
1-11-73		18.86	NEAR CENTRAL AVE

LUCAS

I-75

SLM 1.99

DATE	LANE	VERT. CLEAR.	REMARKS:
1-9-73	NBL	15.32	@ US 24
1-9-73	SBL	15.18	@ US 24
8-30-90		16.38	NEBRASKA AVE EXIT RAMP
8-30-90	NBL	15.16	US 24 EXIT RAMP
8-30-90	SBL	15.06	NEBRASKA AVE OVER I-75
8-30-90	NBL	15.17	" " " " " "

LUCAS

I-75 RAMP 2E + US 24

SLM 1.99

DATE	LANE	VERT. CLEAR.	REMARKS:
1-9-73	NB	16.50	@ US-24
1-9-73	SB	28.00	@ US-24
1-9-73	SB	21-17	@ I-75
1-9-73	SB	15.24	RAMP MICHIGAN AVE TO SB I-75
1-9-73	NBL	18.90	I-75 NB. OVER 24
1-9-73		25.53	NEBRASKA AVE OVER US 24
1-9-73	SBL	19.49	I-75 NB. OVER SB US 24
1-9-73	SBL	15.47	US 24 RAMP OVER SB US 24
1-9-73	SBL	20.93	I-75 SB. OVER US 24 SB
1-9-73	SBL	15.08	OVER RAMP FROM US 24
1-9-73	NBL	14.99	OVER MICHIGAN ON RAMP TO I-75
1-9-73		21.82	NEBRASKA OVER US NBL TO I-75 NBL
8-30-90		21.61	" " " " " "

INTER-OFFICE COMMUNICATION

OFFICE OF PLANNING AND PROGRAMS

District Two
317 E. Poe Rd. Bowling Green, Ohio 43402
Ph. 419-353-8131 / Fax 419-353-1468

DATE: June 15, 2001

TO: MEMO TO FILE

FROM: Imad J. Bdeiri, District Programs Engineer

SUBJECT: LUC-75-200 Field Review, Preliminary Minutes

Purpose and Need: Resurface IR-75 from Nebraska Ave. to Central Ave (SR-120) (SLM 4.82) with some joint repairs. The 1999 PCR values range from a low 65 to a high of 68.

On August 16, 2000 a field review was conducted on the above subject project. The following persons were in attendance:

- Steve Fourney, Lucas County Garage
- Craig Schneiderbauer, Northwood Outpost
- Julie Fay, ODOT D-2
- Imad Bdeiri, ODOT D-2

The total length of the project on IR-75 is approximately 2.82 mile.

IR-75 is designated as an urban Interstate. The posted and legal speed limit on this route is 60 MPH.

The funding source for this project will be FY-2002 District Pavement Allocation (90% Federal/10% State).

According to the 1998 ODOT Traffic Survey Report, the traffic on US-23 is as follows:

- 89,750 Passenger & A Commercial
- 13,710 B&C Commercial
- 103,460 Total

Certified forecasted traffic (12 years horizon) will be requested from the Office of Technical Services in Columbus.

The existing route consists of 4 12 feet travel lanes. The existing right asphalt shoulder is 12 feet

and the existing left shoulder is 10 feet. The open graded friction course (OGFC) used on the Southbound (SB) lanes between split and Detroit Ave seemed to have drastically reduced the number of accidents. It is suggested to use the OGFC south of Detroit Ave. (NB & SB) where the number of accidents have increased. The main lines were crack sealed and shoulders are showing some crackings. The Collingwood southbound off ramp and northbound on ramp are in bad condition and need to be addressed as part of this project. The open drainage channels along the Detroit Ave ramps need to be enclosed and brought-up to standard. The concrete pavement of the Washington and 14th St ramps are in bad shape and need to be fixed. The Washington overpass concrete slope protection is caving-in and need to be fixed. The median barrier and lighting seemed to be in good condition. The Washington St. attenuator, which gets a lot of hits, need to be replaced/upgraded.

The Dynaflect machine will determine the required pavement composition for this section of roadway. Joints should be cored also.

All geometric features within the project limits should be checked with the *ODOT Location & Design Manual Standards*.

The project should be completed in English.

Preferred pavement cross slope should be designed at 0.016. A cross slope of 0.02 may be proposed for drainage purposes.

The guardrail should be checked for compliance with the *ODOT Location and Design Manual Standards*.

There are no drainage problems known for this section of roadway. The ditches should be cleaned as part of this project.

There are no utilities on this project. However, tower lighting exists the entire length of the project.

The project shall be completed in English.

No potential environmental concerns were observed.

Please return any questions or comments to Imad Bdeiri by November 3, 2000.

WML/MB/tmh

c: All Attendees -

M. Ligibel - B. Barth - D. Lewis - R. Perse - FHWA - Reading File - File