

O.D.O.T. DISTRICT 2 SURVEY OFFICE (USE ONLY)

PERSONNEL \_\_\_\_\_

REFERENCE NO. \_\_\_\_\_

SHEET 17 OF 20

NOTES TOMSIC

DATE 11/9/72

ROUTE I-75

H.C. NEUSER

WEATHER \_\_\_\_\_

COUNTY LUCAS

R.C. VANYO

TEMP. \_\_\_\_\_

TOWNSHIP CITY OF TOLEDO

GRANATA

SECTION 22

DWG BY NIESE PID \_\_\_\_\_

T 9 S R 7 E

TYPE MONUMENT IPIN

ON SURFACE - BELOW \_\_\_\_\_ ON \_\_\_\_\_

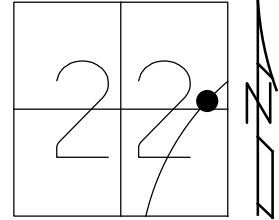
OFFSET  $\phi$  PAVEMENT \_\_\_\_\_ LT : RT

\_\_\_\_\_ TO \_\_\_\_\_ EDGE PAVEMENT

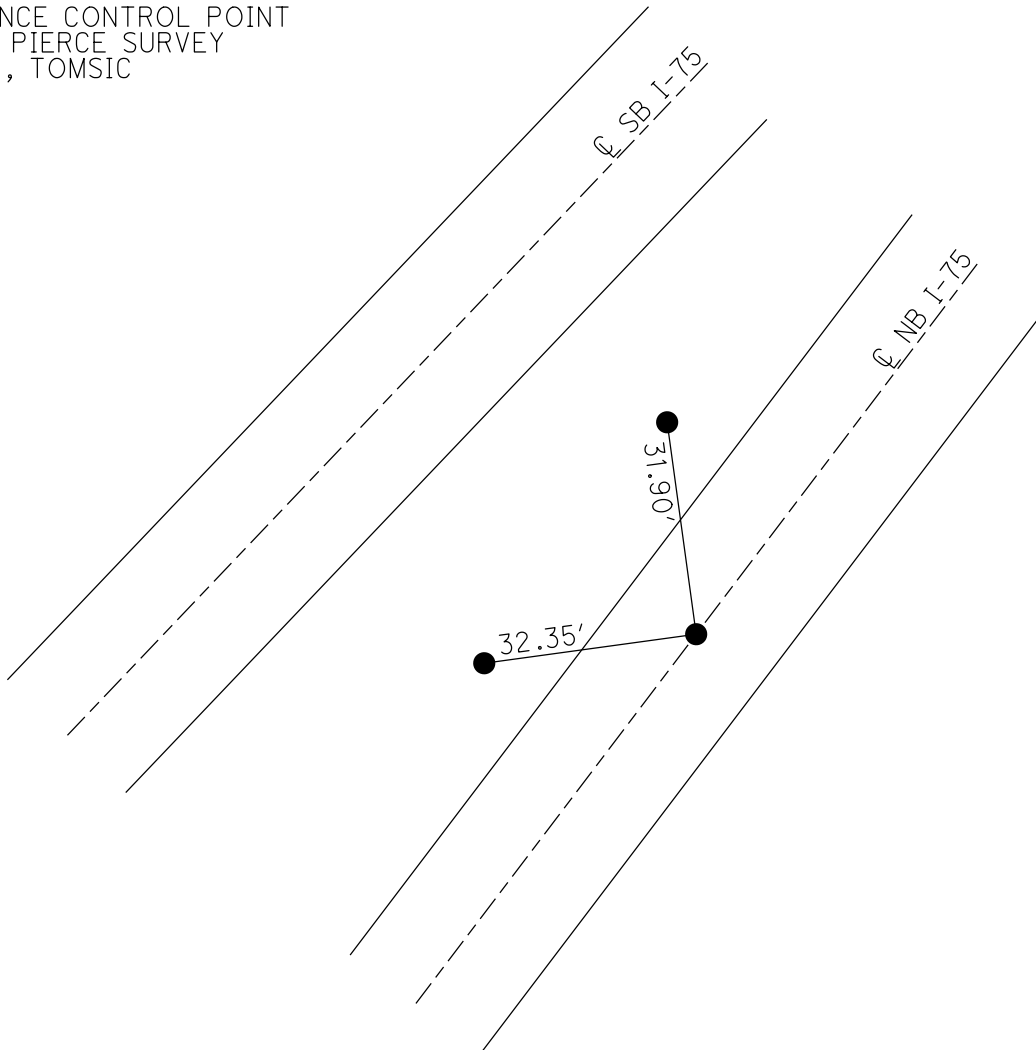
STATION: 295+81.46

HORZ.DATUM: \_\_\_\_\_ GEOID: \_\_\_\_\_

GRID: NORTHING: \_\_\_\_\_ EASTING: \_\_\_\_\_



RECORD:  
REFERENCE CONTROL POINT  
SET BY PIERCE SURVEY  
11/9/72, TOMSIC



# NORTH BOUND LANE

PERSONNEL	TITLE	PERSONNEL	TITLE	COUNTY	<u>LUCAS</u>	DATE	<u>Nov-9-72</u>
<u>Tomsic</u>				S. R.	<u>I-75</u>	WEATHER	
<u>Neuser</u>				SEC.	<u>Central To Drexel</u>	TEMP.	
<u>Vargo</u>							
<u>Grant</u>							

DESCRIPTION Reference CONTROL POINTS (Set by POIRCE SURVEY) JOB NO. 0516

