

O.D.O.T. DISTRICT 2 SURVEY OFFICE (USE ONLY)

PERSONNEL

REFERENCE NO. \_\_\_\_\_

SHEET 18 OF 20

NOTES TOMSIK

DATE 11/9/72

ROUTE I-75

H.C. NEUSER

WEATHER \_\_\_\_\_

COUNTY LUCAS

R.C. VANYO

TEMP. \_\_\_\_\_

TOWNSHIP CITY OF TOLEDO

GRANATA

SECTION 22

DWG BY NIESE PID \_\_\_\_\_

T 9 S R 7 E

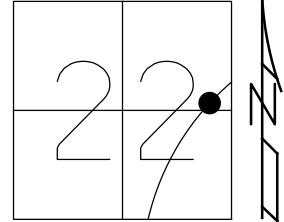
TYPE MONUMENT MONBOX

ON SURFACE - ~~BELOW~~ ON \_\_\_\_\_

OFFSET  $\odot$  PAVEMENT \_\_\_\_\_ LT : RT

- TO - EDGE PAVEMENT

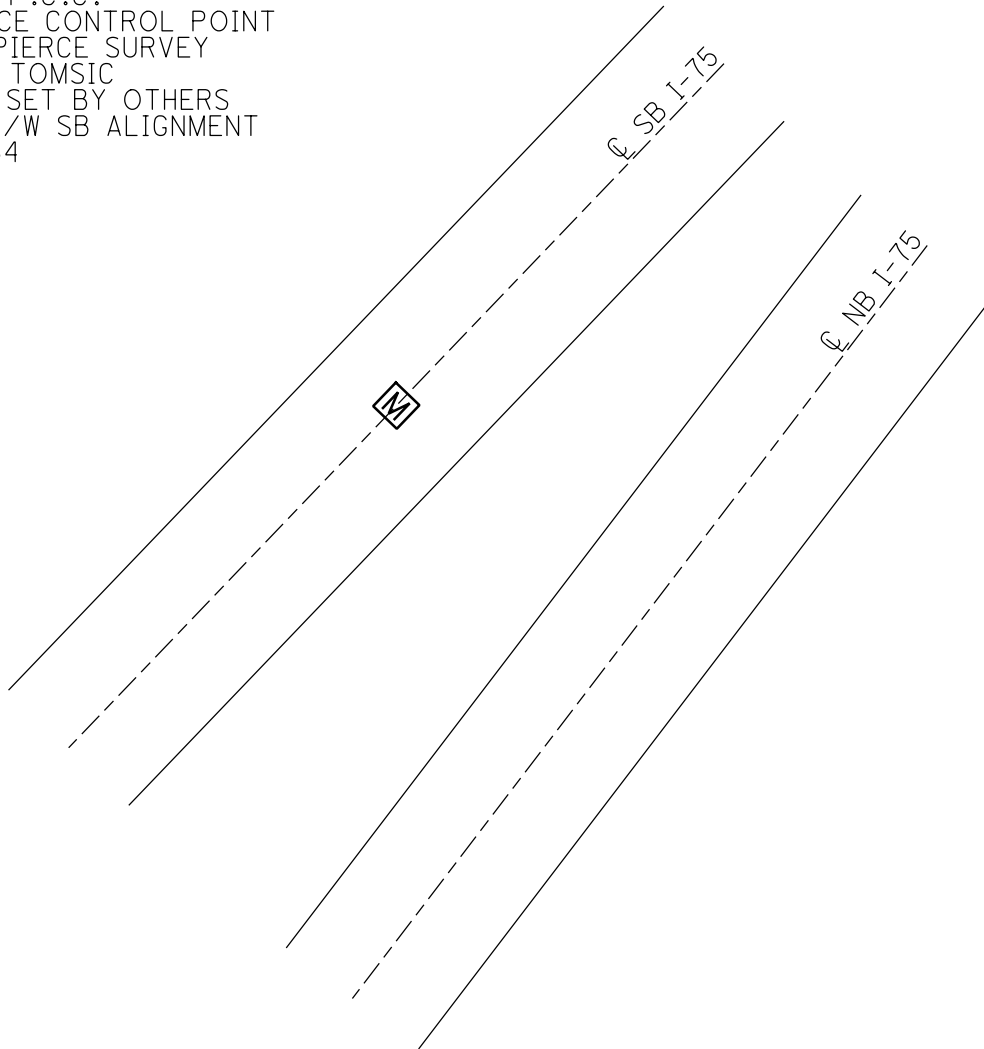
STATION: 295+95



HORIZ.DATUM: NAD83(ADJUSTED 1995) GEOID: \_\_\_\_\_

GRID: NORTHING: 737391.778 EASTING: 1676855.550

RECORD: P.C.C.  
REFERENCE CONTROL POINT  
SET BY PIERCE SURVEY  
11/9/72, TOMSIK  
MONBOX SET BY OTHERS  
I-75  $\odot$  R/W SB ALIGNMENT  
PID 77254  
4/24/20



# SOUTH BOUND LANE

PERSONNEL TITLE PERSONNEL TITLE

COUNTY LUCAS

DATE NOV. - 9 - 72

Tomsic

S. R. I-75

WEATHER

Neusec

Vanyo

SEC. Central To Drexel

TEMP.

Granata

DESCRIPTION Reference CONTROL POINTS (SET BY PGIRCG SURVEY) JOB NO. 0516

