

O.D.O.T. DISTRICT 2 SURVEY OFFICE (USE ONLY)

PERSONNEL _____

REFERENCE NO. _____

SHEET 19 OF 34

NOTES VAN DUSEN

DATE 1/30/98

ROUTE I-75

H.C. MOSER

WEATHER CLOUDY

COUNTY LUCAS

R.C. HUSS

TEMP. 35°

TOWNSHIP CITY OF TOLEDO

DWG BY NIESE

PID _____

SECTION 8

T 9 S R 8 E

TYPE MONUMENT IPIN

ON SURFACE - ~~BELOW~~ ON

OFFSET Q PAVEMENT ON LT : RT

- TO - EDGE PAVEMENT

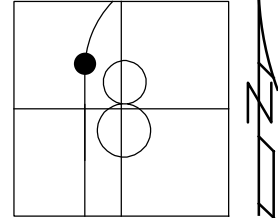
STATION: 475+85.69

HORZ. DATUM: _____

GEOID: _____

GRID: NORTHING: _____

EASTING: _____



RECORD: S.C.
IPIN IN CONC WALL
N: 48345.98
E: 37521.14
1/30/98, VAN DUSEN

Q SB I-75

Q NB I-75

CONCRETE MEDIAN

PERSONNEL	TITLE	PERSONNEL	TITLE
VAN DUSEN			
MOSEER			
HUSS			

COUNTY LUCAS DATE 1-30-98
 S.R. I-75 WEATHER CLOUDY
 SEC. 2.83 TEMP. +35° F

DESCRIPTION CONFIRMATION & LOCATION OF MONUMENTS JOB NO. 023350
 LEFT CENTER LINE RIGHT

