

O.D.O.T. DISTRICT 2 SURVEY OFFICE (USE ONLY)

PERSONNEL _____

REFERENCE NO. _____

SHEET 20 OF 34

NOTES VAN DUSEN

DATE 1/30/98

ROUTE I-75

H.C. MOSER

WEATHER CLOUDY

COUNTY LUCAS

R.C. HUSS

TEMP. 35°

TOWNSHIP CITY OF TOLEDO

SECTION 8

DWG BY NIESE

PID _____

T 9 S R 8 E

TYPE MONUMENT 1/4" DRILL HOLE

ON SURFACE - ~~BELOW~~ ON

OFFSET Q PAVEMENT _____ LT : RT

- TO - EDGE PAVEMENT

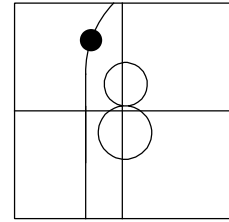
STATION: 482+26

HORIZ.DATUM: _____

GEOID: _____

GRID: NORTHING: _____

EASTING: _____



RECORD:
1/4" DRILL HOLE
IN RETAINING WALL
PT#1019
N: 48986.321
E: 37658.858
1/30/98, VAN DUSEN

Q SB I-75

Q NB I-75

CONCRETE MEDIAN

CONC. RETAINING WALL



1/4" DRILL HOLE
IN CONC WALL

PERSONNEL	TITLE	PERSONNEL	TITLE
VAN DUSEN			
MOSEER			
HUSS			

COUNTY LUCAS DATE 1-30-98
 S.R. I-75 WEATHER CLOUDY
 SEC. 2.83 TEMP. +35° F

DESCRIPTION CONFIRMATION & LOCATION OF MONUMENTS JOB NO. 023350
 LEFT CENTER LINE RIGHT

