

O.D.O.T. DISTRICT 2 SURVEY OFFICE (USE ONLY)

PERSONNEL

REFERENCE NO. _____

SHEET 26 OF 34

NOTES VAN DUSEN

DATE 1/30/98

ROUTE I-75

H.C. MOSER

WEATHER CLOUDY

COUNTY LUCAS

R.C. HUSS

TEMP. 35°

TOWNSHIP WASHINGTON

DWG BY NIESE PID _____

SECTION 5

T 9 S R 8 E

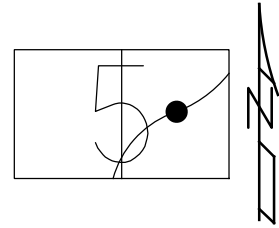
TYPE MONUMENT 1/4" DRILL HOLE

ON SURFACE - ~~BELOW~~ ON

OFFSET ☉ PAVEMENT ON LT : RT

- TO - EDGE PAVEMENT

STATION: 512+84.39



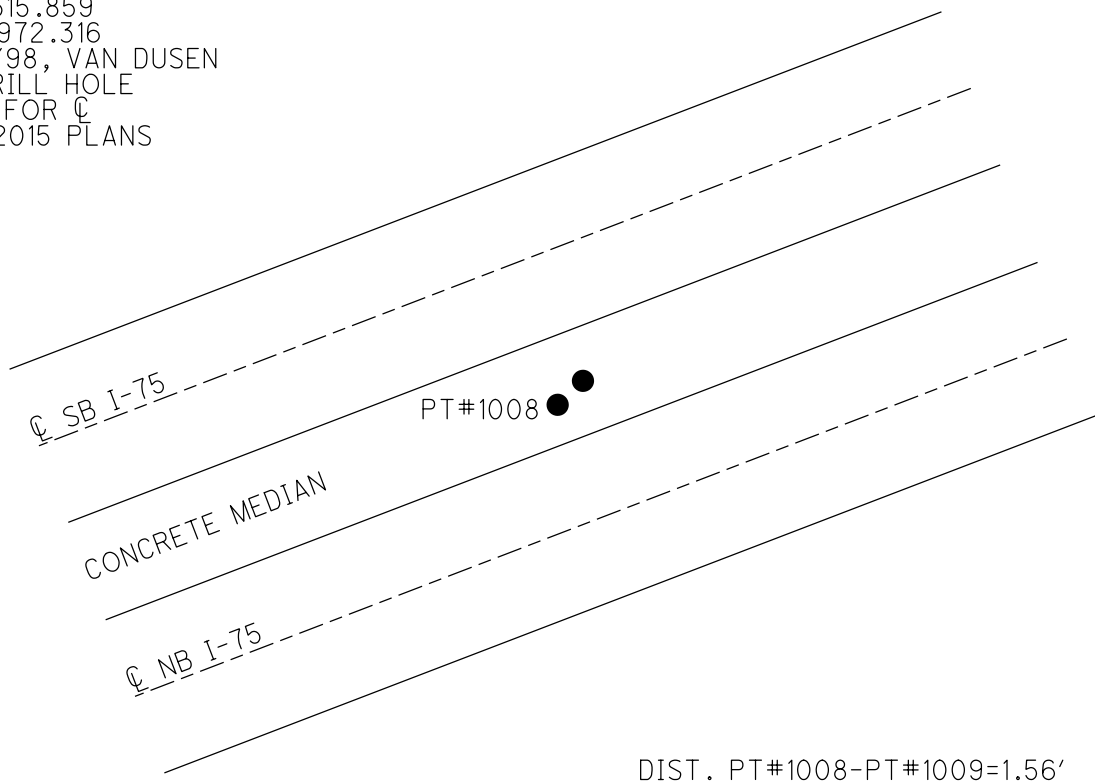
HORZ.DATUM: NAD83(2011)

GEOID: _____

GRID: NORTHING: 751848.212

EASTING: 1697034.037

RECORD: T.S.
1/4" DRILL HOLE
ORIGINAL POSITION OF
MONBOX, PRE-CONST
PT#1009
N: 51515.859
E: 38972.316
1/30/98, VAN DUSEN
FD DRILL HOLE
HELD FOR ☉
FOR 2015 PLANS



DIST. PT#1008-PT#1009=1.56'

PERSONNEL	TITLE	PERSONNEL	TITLE
VAN DUSEN			
MOJER			
HUSS			

COUNTY LUCAS DATE 1-30-98
 S.R. I-75 WEATHER CLOUDY
 SEC. 2.83 TEMP. +35° F

DESCRIPTION CONFIRMATION & LOCATION OF MONUMENTS JOB NO. 023350
 LEFT CENTER LINE RIGHT

