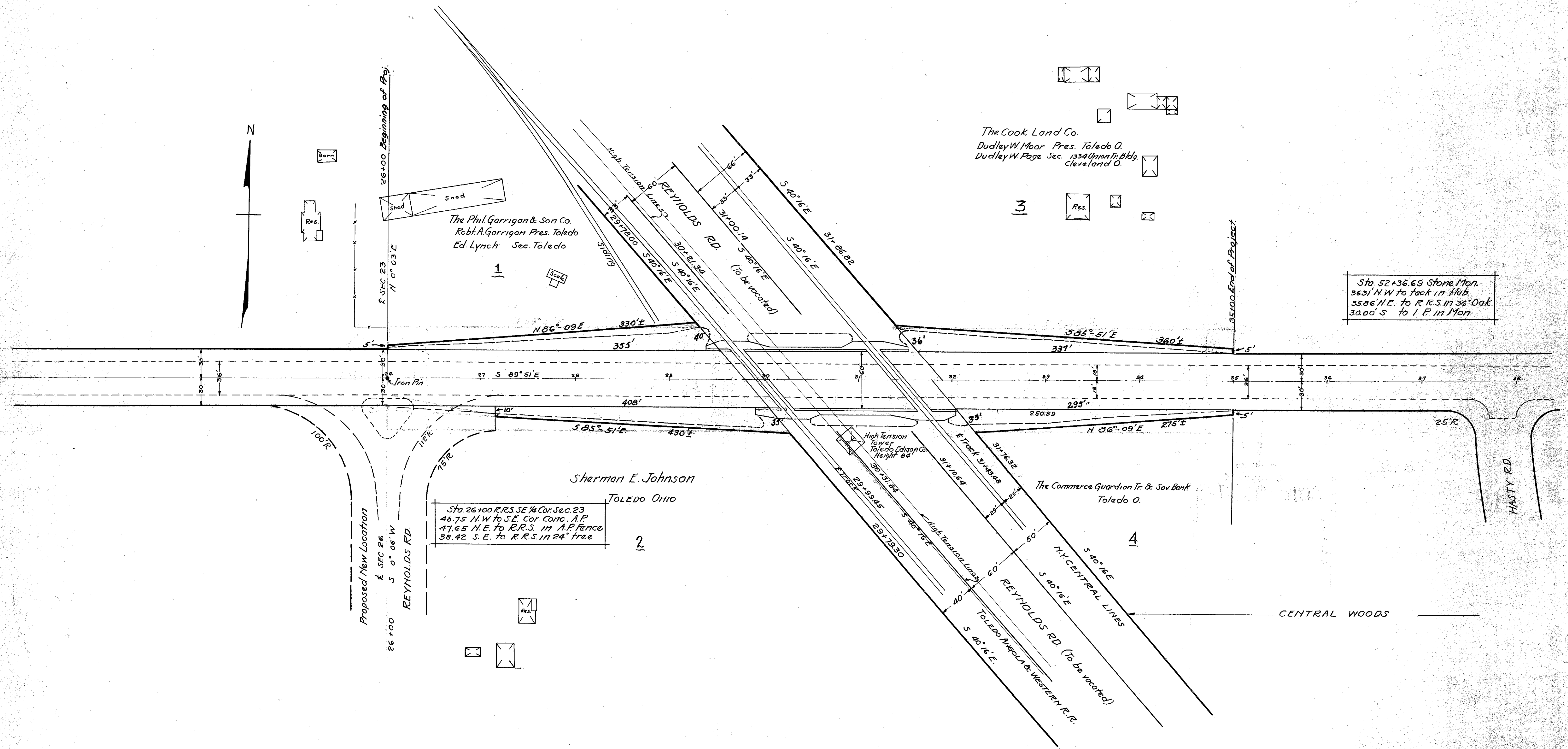


Scanned
1997

R-3120 * 2 C-16



Sta 52+36.69 Stone Mon.
 36.31' N.W. to tack in Hub
 35.86' N.E. to R.R.S. in 36" Oak
 30.00' S. to I.P. in Mon.

Sta. 26+00 R.R.S. SE 1/4 Cor. Sec. 23
 48.75' N.W. to S.E. Cor. Conc. A.P.
 47.65' N.E. to R.R.S. in A.P. fence
 38.42' S.E. to R.R.S. in 24" tree

PROPERTY MAP
 Proposed Separation of the Tracks of
 New York Central Lines & Toledo Angola Western R.R.
 and
 S.H. (I.C.H.) 21
 In Sylvania Twp Lucas County Ohio
 State of Ohio
 Department of Highways
 Scale 1"=50' March 1929