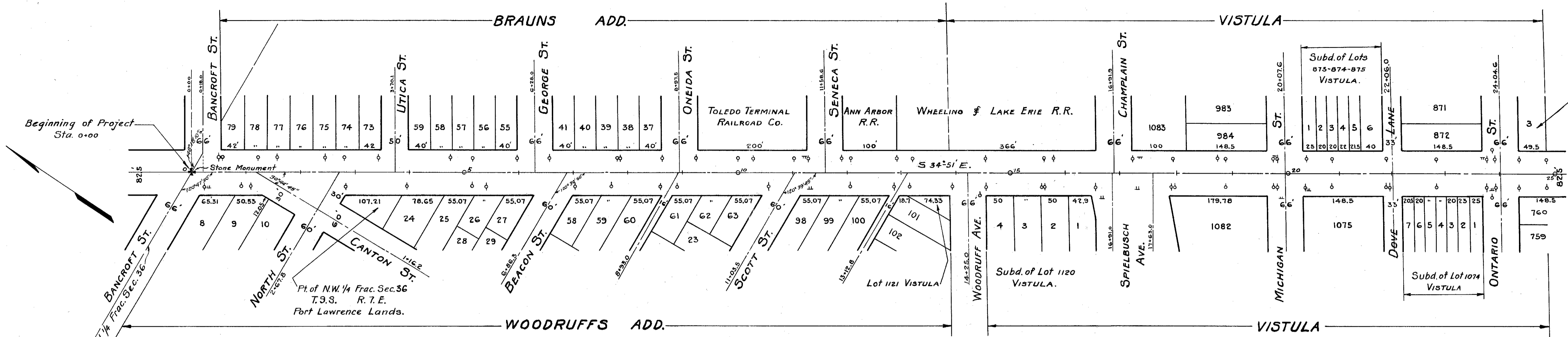
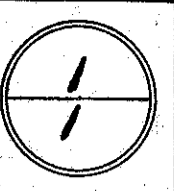


Scanned
July
1997

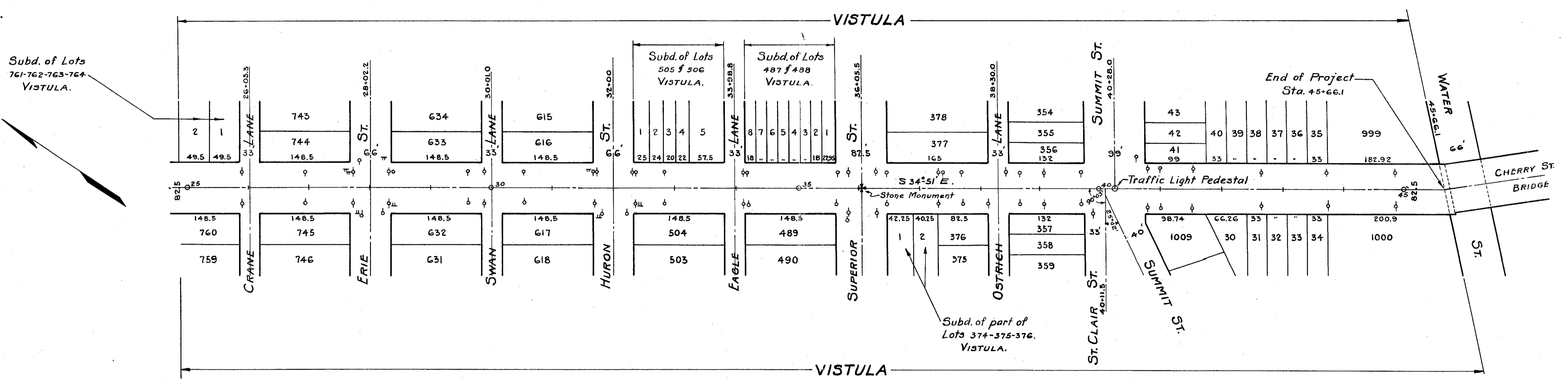
LUCAS COUNTY
SH. 21 SEC. TOLEDO (PT.)
R/W PLANS
(CHERRY STREET)



I, Otto H. Hohly, Service Director of The City of Toledo, Lucas County, Ohio, do hereby certify that the above Right of Way is 82.5 ft. in width as shown in the Dedicated Plats of The City of Toledo, Ohio, as now shown on record in the office of the Commissioner of Engineering, Toledo, Ohio.

Signed *O. Hohly*

-Legend-
 ○ = Trolley Poles
 ◊ = Toledo Edison Poles
 T = Traffic Lights



STATE OF OHIO
 DEPARTMENT OF HIGHWAYS
 RIGHT OF WAY PLANS
TOLEDO ANGOLA ROAD
 S.H. 21. SEC. TOLEDO (PT.)
 (CHERRY STREET)
 CITY OF TOLEDO,
 LUCAS COUNTY
 1933.

R-3120 B 2 C-15

C-15