

O.D.O.T. DISTRICT 2 SURVEY OFFICE (USE ONLY)

PERSONNEL

REFERENCE NO. 1

SHEET 1 OF 11

NOTES RHOADES  
 H.C. HOMAN  
 R.C. O'DONNELL  
LEU, KEFFER

DATE 6-24-16  
 WEATHER SUNNY  
 TEMP. 75°

ROUTE SR 20/SR 120  
 COUNTY LUCAS  
 TOWNSHIP SYLVANIA  
 SECTION 23

DWG BY JAMES PID 95717

T 9 N R 6 E

TYPE MONUMENT MAG/WASHER

ON SURFACE - ~~BELOW~~ ON

OFFSET  $\phi$  PAVEMENT 9' EAST  $\phi$  US 20 LT : RT

32.9' TO LT EDGE PAVEMENT

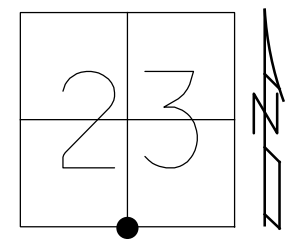
STATION: 562+32.00

HORZ.DATUM: NAD83 2011

GEOID: NAVD88 2012A

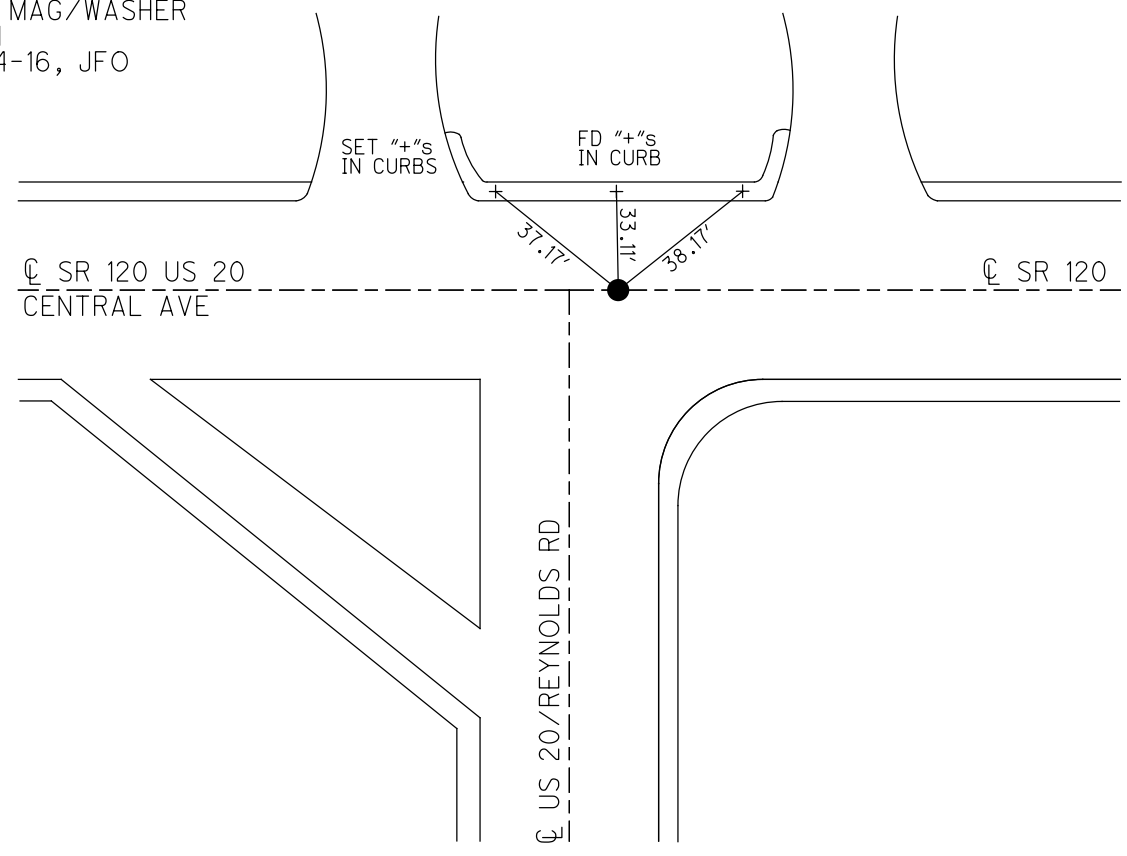
GRID: NORTHING: 734449.653

EASTING: 1647992.611



RECORD:  
 FD ADJ BRASS MON  
 TO SURFACE  
 8/9/71, W.DENNO  
 FD P.K./WASHER  
 5/23/03, SWH  
 FD MAG NAIL  
 8-15-07, RGN  
 SET MAG/WASHER  
 REF1  
 6-24-16, JFO

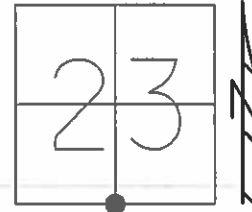
NOTE: REF 47 US 20  
 POINT 8' E OF  
 REYNOLDS RD  $\phi$



O.D.O.T. DISTRICT 2 SURVEY OFFICE (USE ONLY)

PERSONNEL	REFERENCE NO.	47	SHEET	2	OF	9
NOTES	NUHFER	DATE	8/15/07	ROUTE	US 20	
H.C.	HUSS	WEATHER	NICE	COUNTY	LUCAS	
R.C.	CANTERBURY	TEMP.	80°	TOWNSHIP	SYLVANIA	
	HOUESHELL			SECTION	23	
				T	9	N
				R	6	E

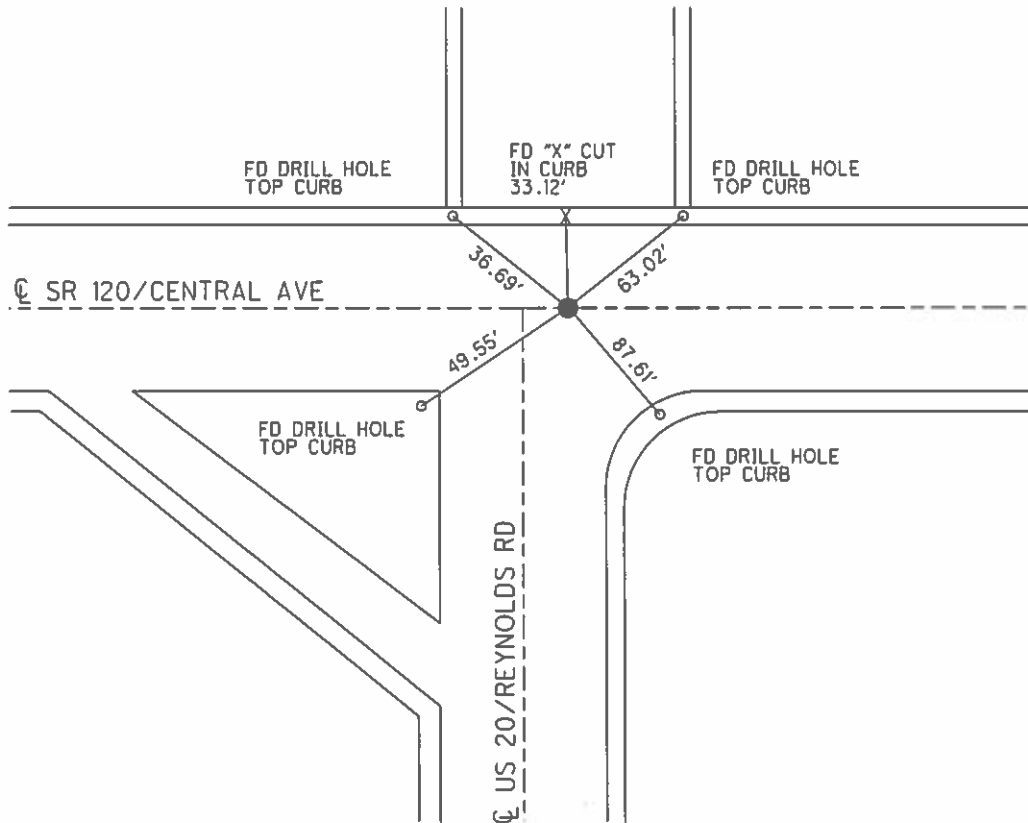
TYPE MONUMENT            MAG/WASHER             
 ON SURFACE - ~~BELOW~~            ON             
 LEFT -            PAV'T - RIGHT            ON             
32.9' TO LT EDGE PAVEMENT  
 S.L.M.            562+40           



GRID: NORTHING:            -            EASTING:            -           

RECORD:  
 FD ADJ BRASS MON  
 TO SURFACE  
 8/9/71, W DENNO  
 FD P.K. NAIL/WASHER  
 5/23/03, SWH

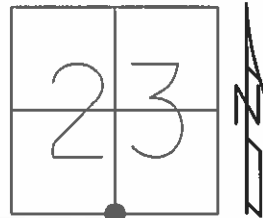
NOTE:  
 POINT 8' E OF  
 REYNOLDS RD C



**O.D.O.T. DISTRICT 2 SURVEY OFFICE (USE ONLY)**

PERSONNEL	REFERENCE NO.	1	SHEET	1	OF	2
NOTES	NUHFER	DATE	8/15/07	ROUTE	SR 120	
H.C.	HUSS	WEATHER	NICE	COUNTY	LUCAS	
R.C.	CANTERBURY	TEMP.	80°	TOWNSHIP	SYLVANIA	
	HOUESHELL			SECTION	23	
				T 9 N	R 6 E	

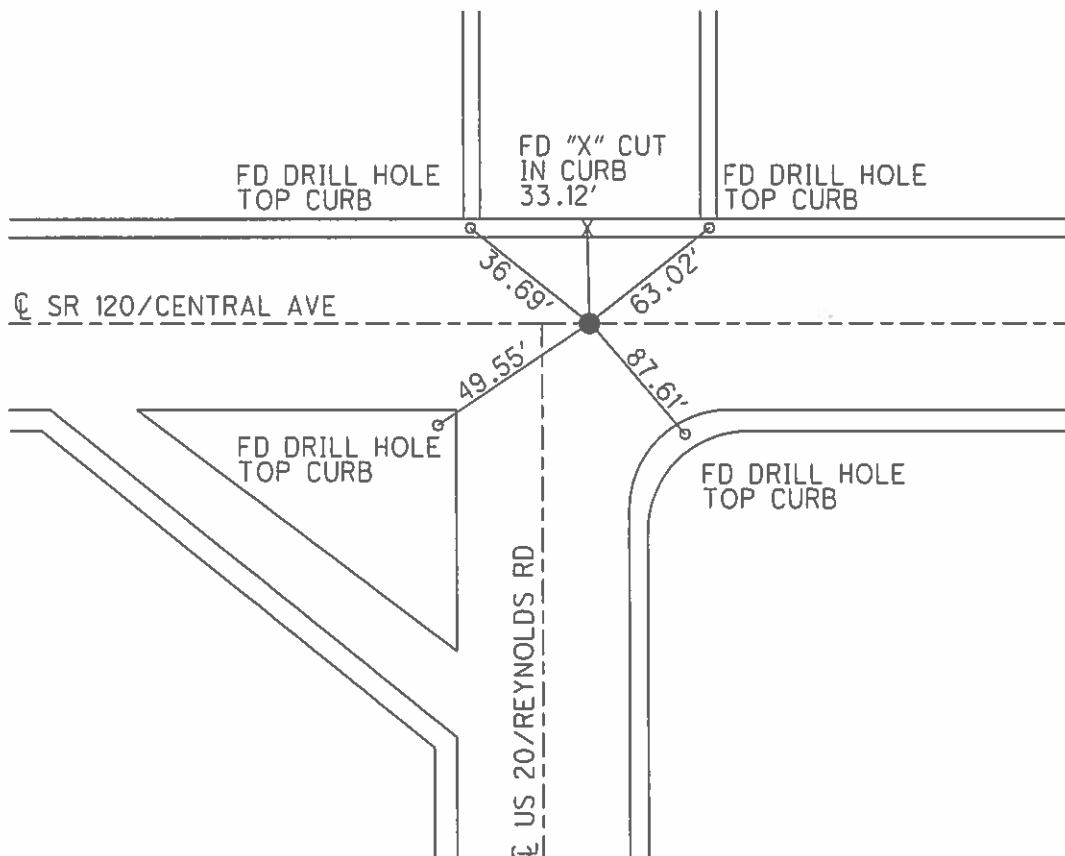
TYPE MONUMENT MAG/WASHER  
 ON SURFACE - BELOW ON  
 LEFT - ☉ PAV'T - RIGHT ON  
32.9' TO LT EDGE PAVEMENT  
 S.L.M. 562+40



GRID: NORTHING: \_\_\_\_\_ EASTING: \_\_\_\_\_

RECORD:  
 FD ADJ BRASS MON  
 TO SURFACE  
 8/9/71, W DENNO  
 FD P.K. NAIL/WASHER  
 5/23/03, SWH

NOTE:  
 POINT 8' E OF  
 REYNOLDS RD ☉



O.D.O.T. DISTRICT 2 SURVEY OFFICE (USE ONLY)

PERSONNEL \_\_\_\_\_

REFERENCE NO. 1

SHEET 2 OF 10

NOTES NUHFER

DATE 08-15-07

ROUTE SR 20/SR120

H.C. HUSS

WEATHER NICE

COUNTY LUCAS

R.C. CANTERBURY

TEMP. +80°

TOWNSHIP SYLVANIA

HOUESHELL

SECTION 23

T 9 N R 6 E

TYPE MONUMENT MAG NAIL

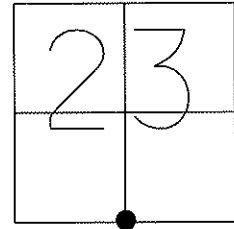
ON SURFACE - ~~BELOW~~ ON SURFACE \_\_\_\_\_

~~LEFT~~ - C PAV'T - ~~RIGHT~~ 9' EAST OF CL SOUTH

32.9' TO LT. EDGE PAVEMENT

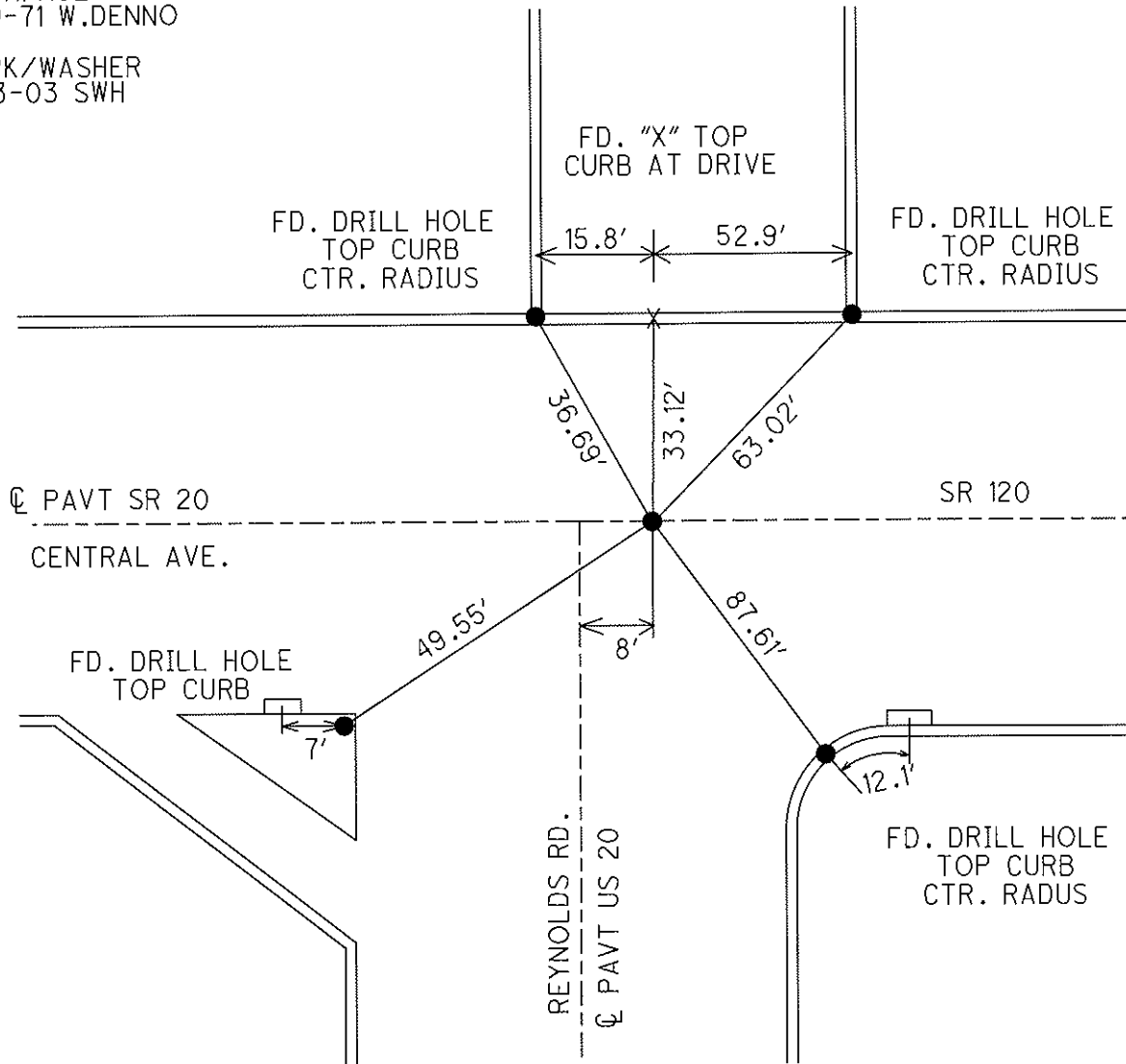
S.L.M. 562+40

GPS Northing= \_\_\_\_\_ Easting= \_\_\_\_\_



FD ADJ. BRASS MON  
TO SURFACE  
08-09-71 W.DENNO

FD. PK/WASHER  
05-23-03 SWH



# O.D.O.T. DISTRICT 2 SURVEY OFFICE

PERSONNEL

REFERENCE NO. 1

SHEET 1 OF 8

NOTES S. Hoffmann

H.C. A. Brown

R.C. C. Beard

M. Glass

DATE 5-23-2003

WEATHER Cloudy

TEMP. 65°

ROUTE SR 120

COUNTY LUCAS

TOWNSHIP SOLUMBIA

SECTION 23

T 9 S R 6 E

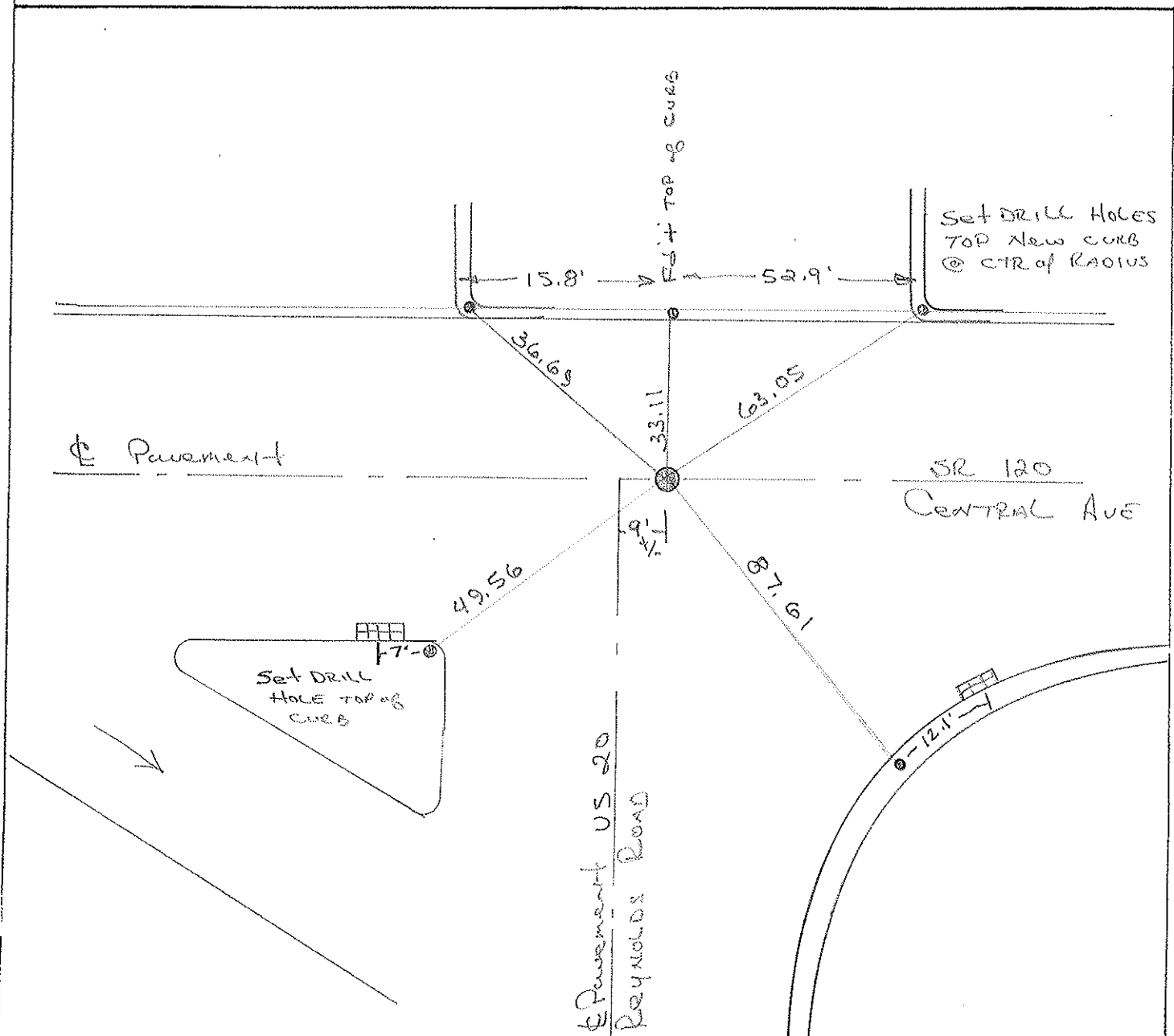
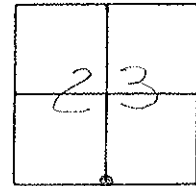
TYPE MONUMENT P.K. steel/washer

ON SURFACE - BELOW yes

LEFT - & PAV'T. - RIGHT SR 120

32.9 TO 4 EDGE PAVEMENT

S.L.M. 562 + 40



Resurveyed 2003

O.D.O.T. DISTRICT 2 SURVEY OFFICE

PERSONNEL

REFERENCE NO. 1

SHEET 1 OF 8

NOTES LOEHAKE

H.C. CORDES

DATE 7-1-93

ROUTE S.R. 120

R.C. CANTERBURY

WEATHER Cloudy

COUNTY LUCAS

ROMETO

TEMP. +78

TOWNSHIP SYLVANIA

SECTION 23

Set P.K. / WASHER  
8-11-93

T 9 S R 6 E

TYPE MONUMENT Bolt Spike

ON SURFACE - BELOW Yes

LEFT- & PAV'T. - RIGHT Yes, of S.R. 120

32.9 TO Lt EDGE PAVEMENT

S.L.M. 562 + 40

