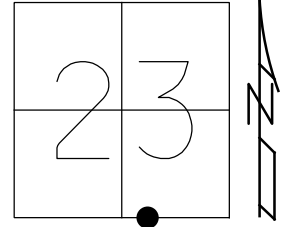


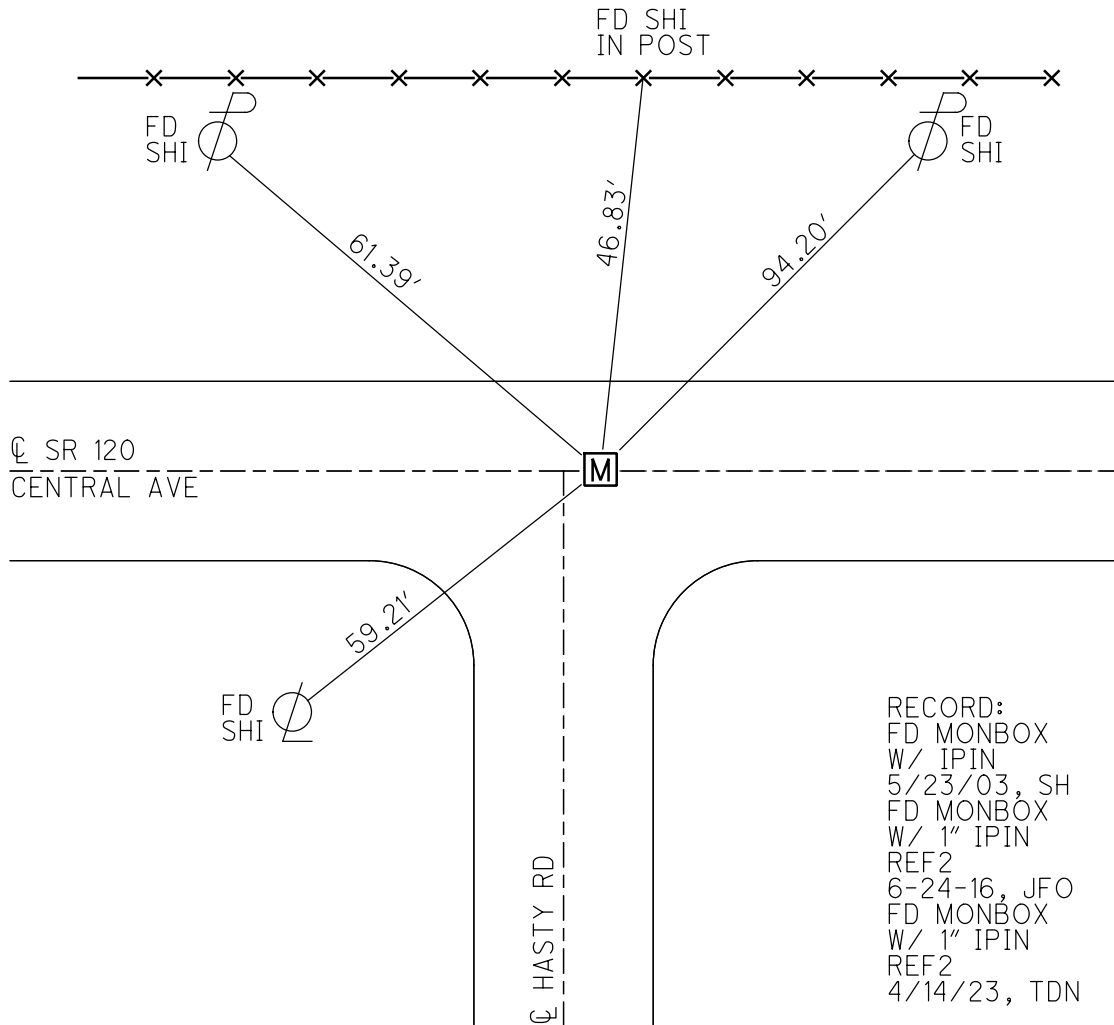
O.D.O.T. DISTRICT 2 SURVEY OFFICE (USE ONLY)

PERSONNEL \_\_\_\_\_ REFERENCE NO. 2 SHEET 2 OF 13  
 NOTES NIESE DATE 4/14/23 ROUTE SR 120  
 H.C. NIESE WEATHER SUNNY COUNTY LUCAS  
 R.C. AUBLE TEMP. 85° TOWNSHIP SYLVANIA  
 DWG BY RHOADES PID 102940 SECTION 23  
 T 9 N R 6 E

TYPE MONUMENT MONBOX W/ 1" IPIN  
 ON SURFACE - ~~BELOW~~ ON  
 OFFSET ☉ PAVEMENT 3.4' E ☉ HASTY RD LT : RT  
27.1' TO LT EDGE PAVEMENT  
 STATION: 574+41



HORIZ.DATUM: NAD83 2011 GEOID: NAVD88 2018  
 GRID: NORTHING: 734461.245 EASTING: 1649174.889



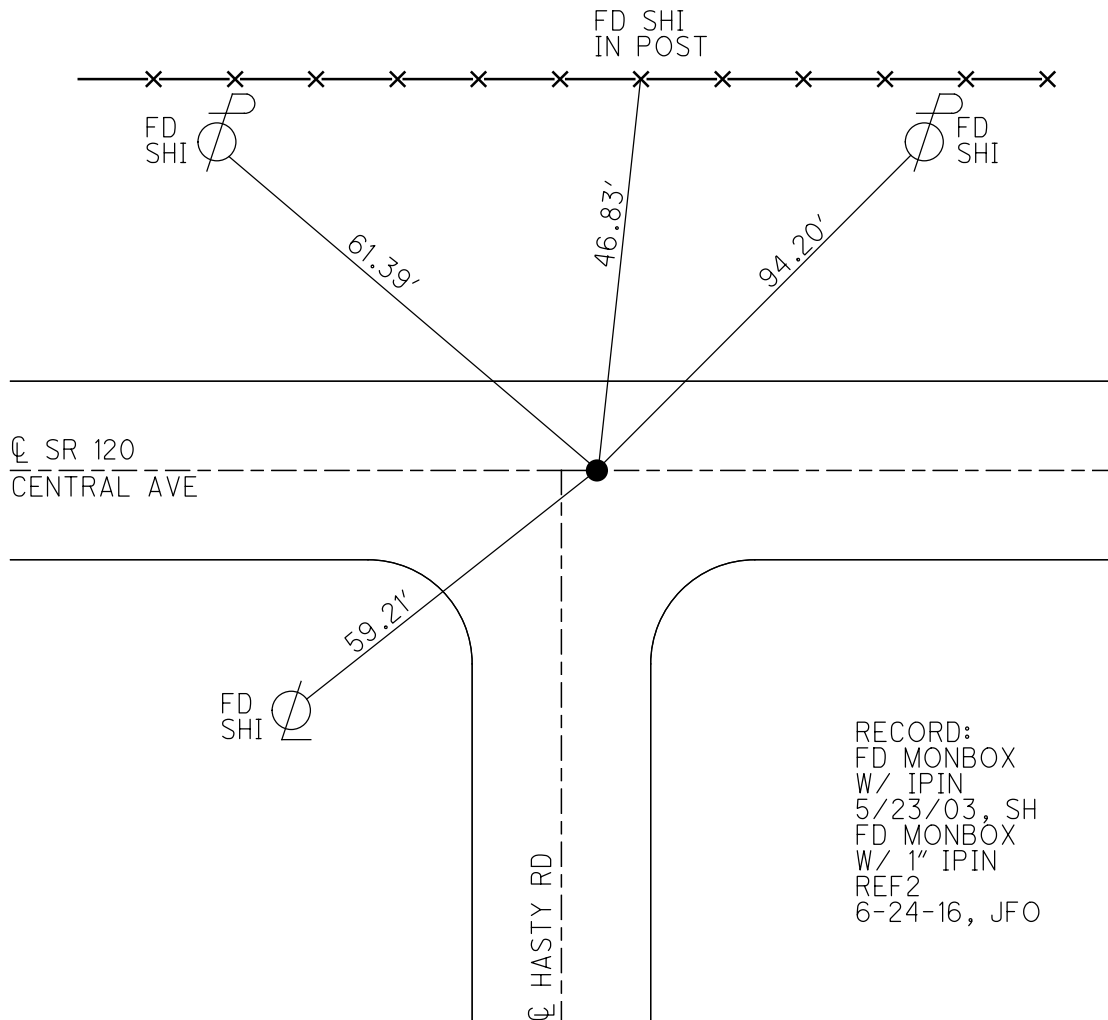
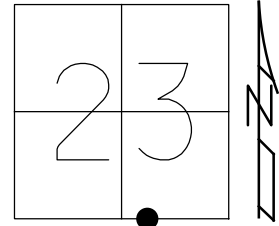
RECORD:  
 FD MONBOX  
 W/ 1" IPIN  
 5/23/03, SH  
 FD MONBOX  
 W/ 1" IPIN  
 REF2  
 6-24-16, JFO  
 FD MONBOX  
 W/ 1" IPIN  
 REF2  
 4/14/23, TDN

O.D.O.T. DISTRICT 2 SURVEY OFFICE (USE ONLY)

PERSONNEL \_\_\_\_\_ REFERENCE NO. 2 SHEET 2 OF 11  
 NOTES NUHFER DATE 8-15-07 ROUTE SR 120  
 H.C. HUSS WEATHER NICE COUNTY LUCAS  
 R.C. CANTERBURY TEMP. 80° TOWNSHIP SYLVANIA  
HOUESHELL SECTION 23  
 DWG BY JAMES PID 95717 T 9 N R 6 E

TYPE MONUMENT MONBOX W IPIN  
 ON SURFACE - ~~BELOW~~ ON  
 OFFSET  $\odot$  PAVEMENT 3.4' E  $\odot$  HASTY RD LT : RT  
27.1' TO LT EDGE PAVEMENT  
 STATION: 574+41

HORZ. DATUM: NAD83 2011 GEOID: NAVD88 2012A  
 GRID: NORTHING: 734461.245 EASTING: 1649174.904

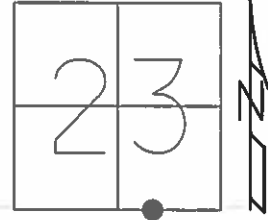


RECORD:  
 FD MONBOX  
 W/ IPIN  
 5/23/03, SH  
 FD MONBOX  
 W/ 1" IPIN  
 REF2  
 6-24-16, JFO

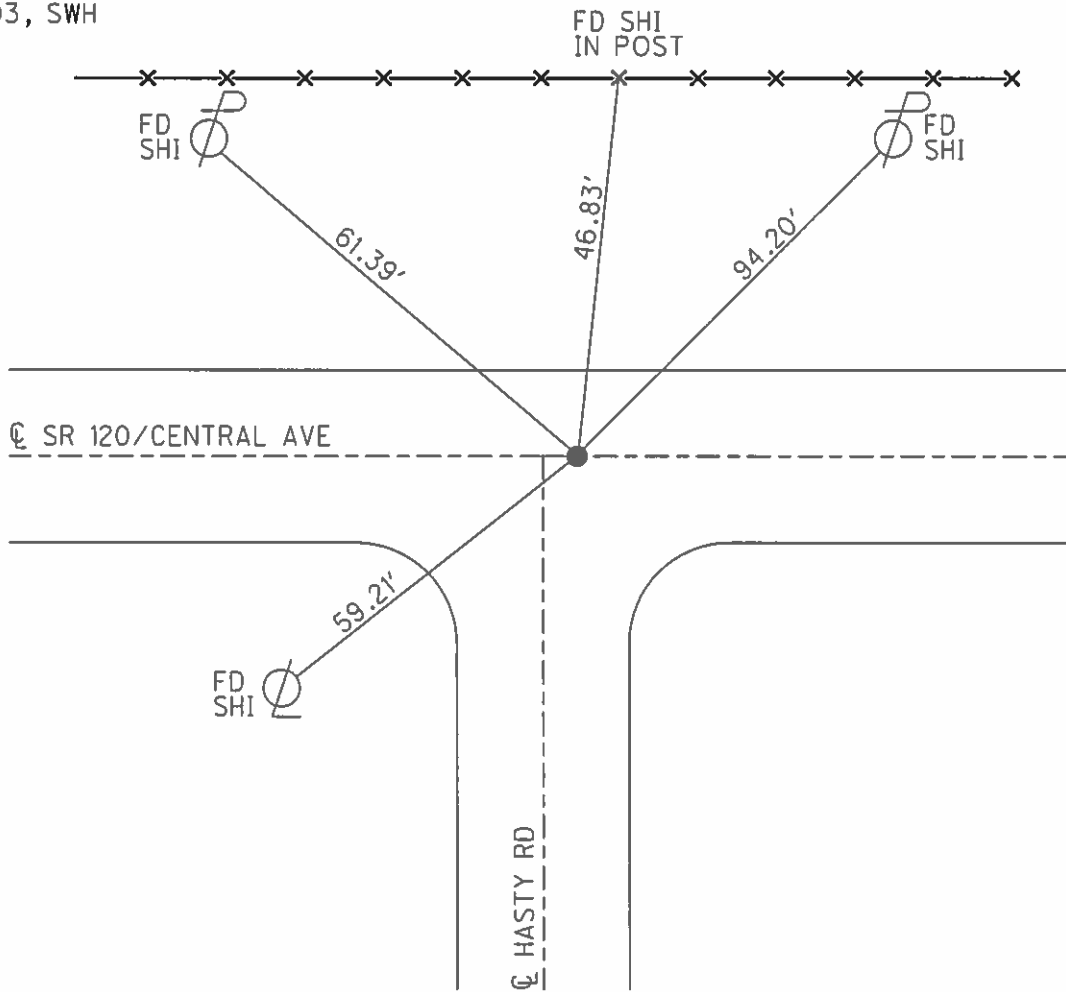
O.D.O.T. DISTRICT 2 SURVEY OFFICE (USE ONLY)

PERSONNEL \_\_\_\_\_ REFERENCE NO. 2 SHEET 2 OF 2  
 NOTES NUHFER DATE 8/15/07 ROUTE SR 120  
 H.C. HUSS WEATHER NICE COUNTY LUCAS  
 R.C. CANTERBURY TEMP. 80° TOWNSHIP SYLVANIA  
HOUDSHELL SECTION 23  
 T 9 N R 6 E

TYPE MONUMENT IPIN IN MONBOX  
 ON SURFACE - BELOW ON  
 LEFT - ☉ PAV'T - RIGHT ON  
27.1' TO LT EDGE PAVEMENT  
 S.L.M. 573+99  
 GRID: NORTHING: - EASTING: -



RECORD:  
 FD IPIN IN MONBOX  
 5/23/03, SWH



O.D.O.T. DISTRICT 2 SURVEY OFFICE (USE ONLY)

PERSONNEL \_\_\_\_\_

REFERENCE NO. 2

SHEET 3 OF 10

NOTES NUHFER

DATE 08-15-07

ROUTE SR 120

H.C. HUSS

WEATHER NICE

COUNTY LUCAS

R.C. CANTERBURY

TEMP. +80°

TOWNSHIP SYLVANIA

HOUESHELL

SECTION 23

T 9 N R 6 E

TYPE MONUMENT FD IP IN MON. BOX

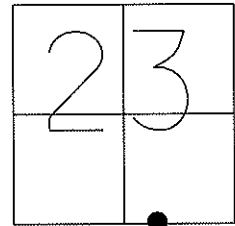
~~ON SURFACE~~ - BELOW ON SURFACE

~~LEFT~~ - C PAV'T - ~~RIGHT~~ 3.4' EAST OF CL SOUTH

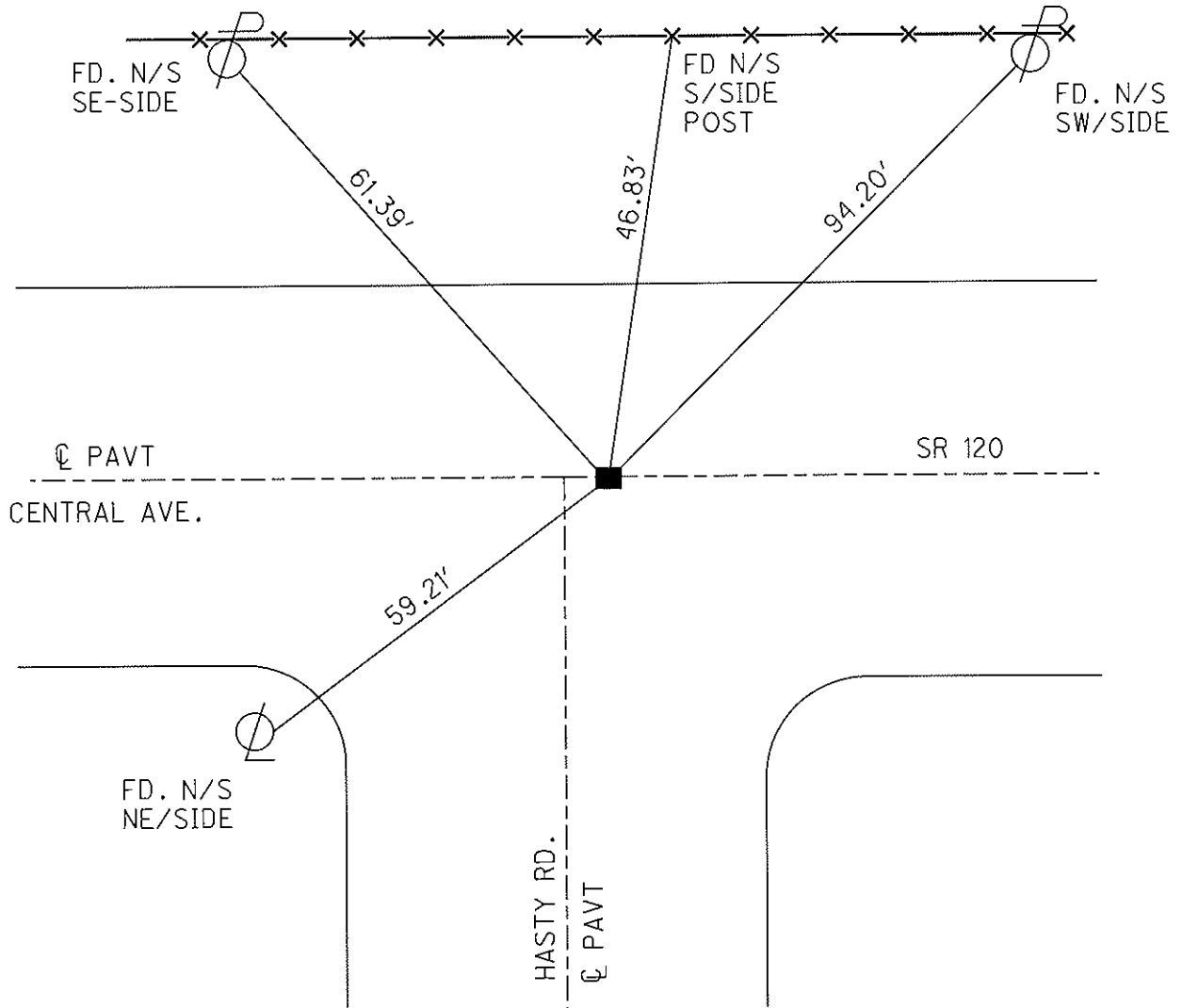
27.1' TO LT. EDGE PAVEMENT

S.L.M. 574+26

GPS Northing= \_\_\_\_\_ Easting= \_\_\_\_\_



FD IP IN  
IN MON. BOX  
05-23-03 SWH



# O.D.O.T. DISTRICT 2 SURVEY OFFICE

PERSONNEL

REFERENCE NO. 2

SHEET 2 OF 8

NOTES S. HOFFMAN

H.C. A. Brown

R.C. C. Beaumont

M. Glass

DATE 5.23.2003

WEATHER cloudy

TEMP. 65°

ROUTE SR 120

COUNTY Lucas

TOWNSHIP Sylvania

SECTION 23

T9 S R 6 E

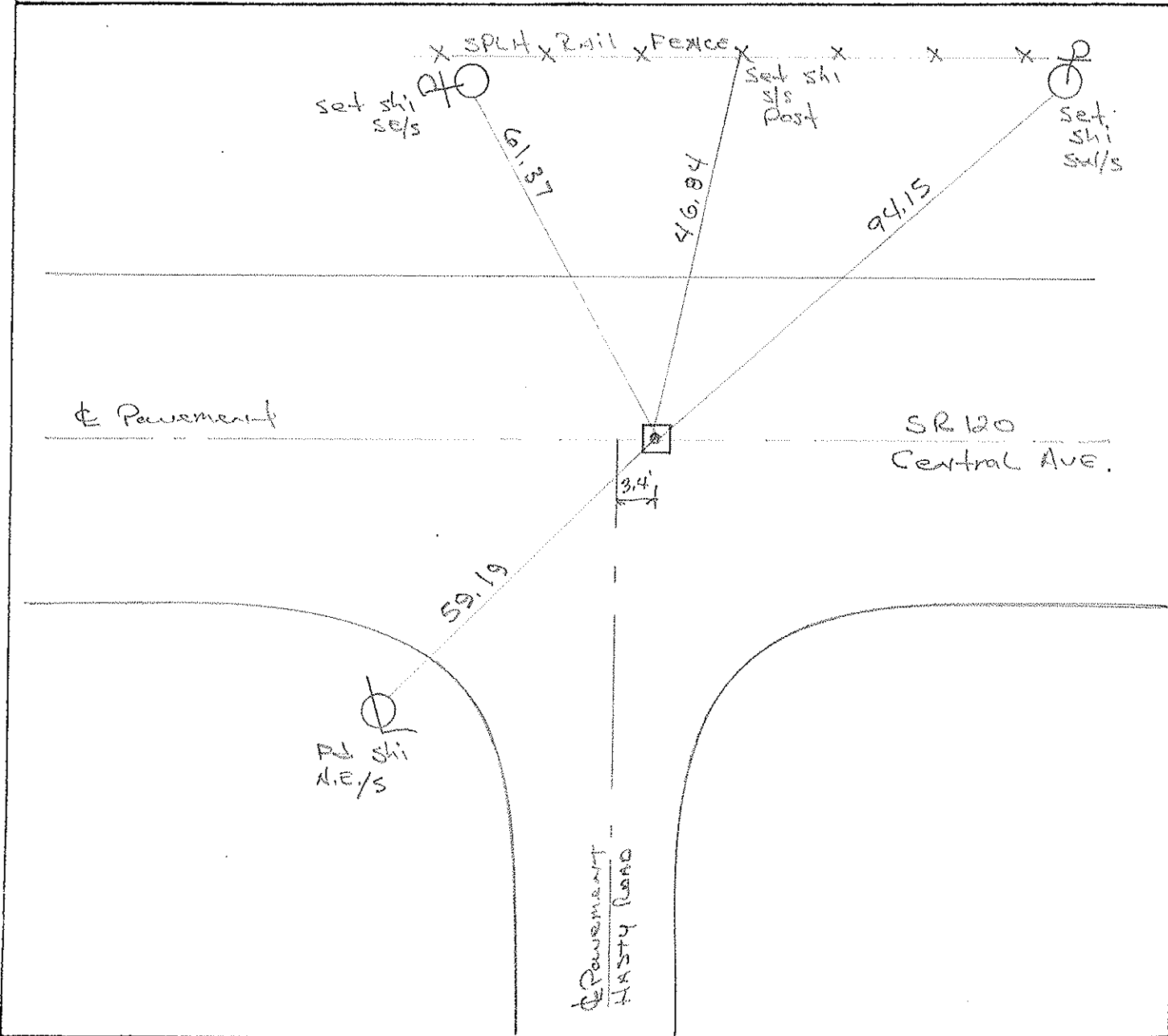
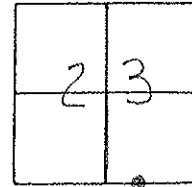
TYPE MONUMENT Monument Box w/ Iron Nail

ON SURFACE - BELOW yes

LEFT - & PAW'T. - RIGHT yes

27.2 TO LT. EDGE PAVEMENT

S.L.M. 574423



O.D.O.T. DISTRICT 2 SURVEY OFFICE

PERSONNEL

REFERENCE NO. 2

SHEET 2 OF 8

NOTES LOEHRKE

H.C. CORDES

R.C. CANTERBURY

ROMETO

DATE 7-1-93

WEATHER Cloudy

TEMP. +78

ROUTE S.R. 120

COUNTY LUCAS

TOWNSHIP SYLVANIA

SECTION 23

T 9 S R 6 E

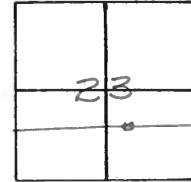
TYPE MONUMENT MON. Box

ON SURFACE - BELOW Yes

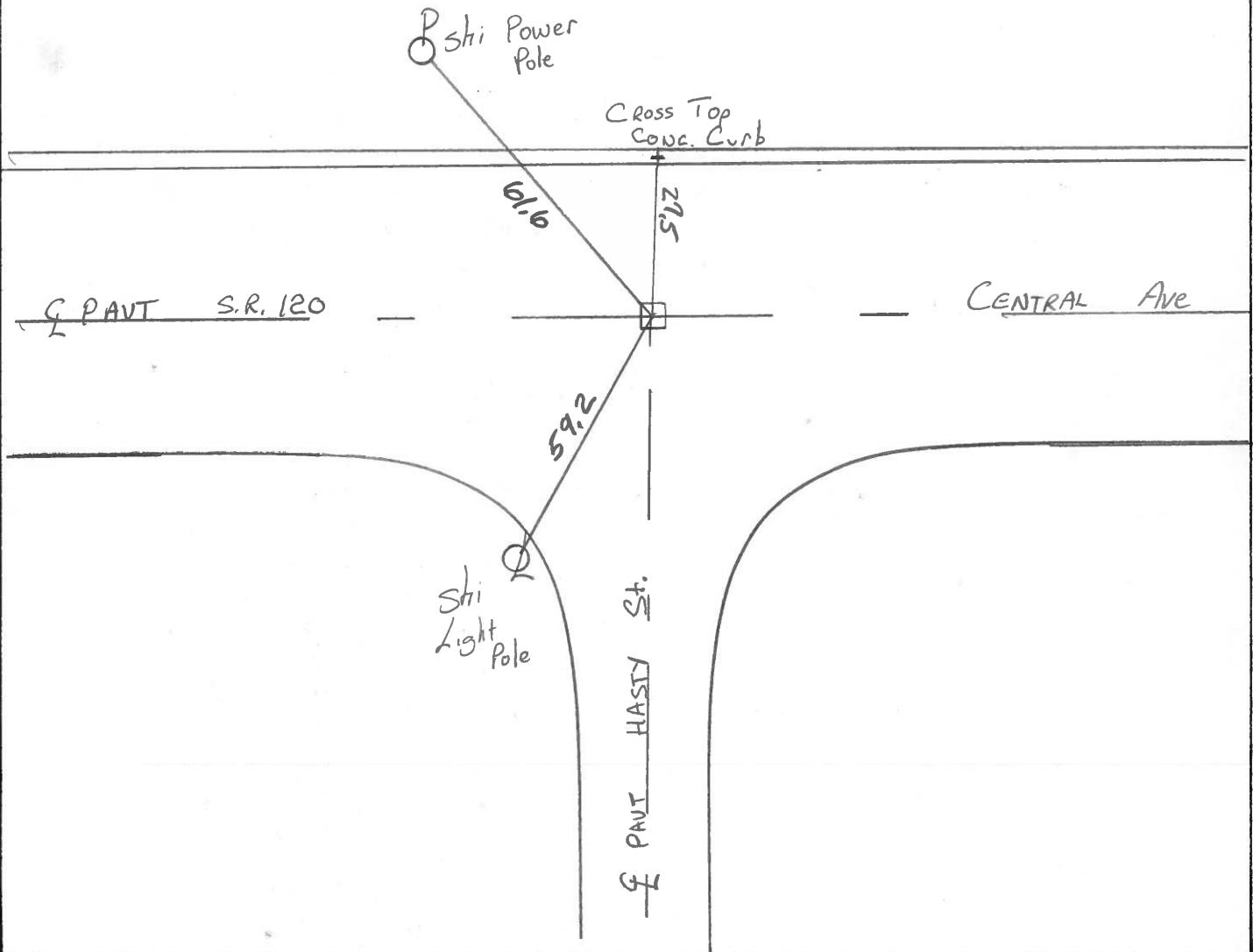
LEFT - C PAV'T. - RIGHT Yes

27.3 TO Lt EDGE PAVEMENT

S.L.M. 574+23



Measurements to Ctr of Lid  
DID NOT OPEN



PERSONNEL	TITLE	PERSONNEL	TITLE
Tomic			
Nassar			
Vanyo			
Granata			

COUNTY Lucas DATE Sept. 7, 1972  
 S. R. U.S. 120 WEATHER \_\_\_\_\_  
 SEC. \_\_\_\_\_ TEMP. \_\_\_\_\_

DESCRIPTION Central ave LEFT CENTER LINE RIGHT JOB NO. \_\_\_\_\_

