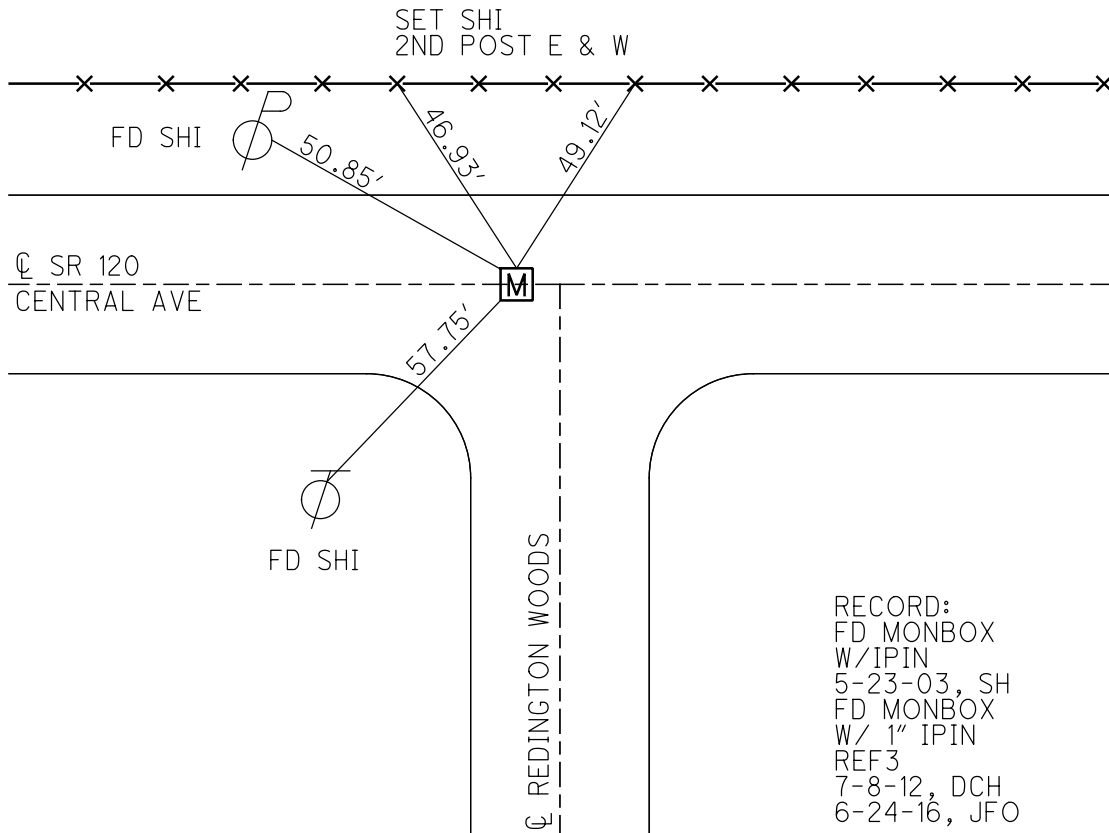
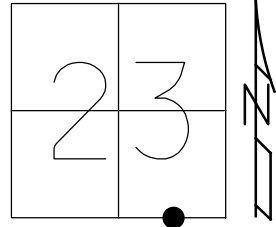


O.D.O.T. DISTRICT 2 SURVEY OFFICE (USE ONLY)

PERSONNEL \_\_\_\_\_ REFERENCE NO. 3 SHEET 3 OF 11  
 NOTES HOFFMAN DATE 5-23-03 ROUTE SR 120  
 H.C. BROWN WEATHER OVERCAST COUNTY LUCAS  
 R.C. BEAUMONT TEMP. 65° TOWNSHIP SYLVANIA  
GLASS SECTION 23  
 DWG BY JAMES PID 95717 T 9 S R 6 E

TYPE MONUMENT MONBOX W/ IPIN  
 ON SURFACE - ~~BELOW~~ ON  
 OFFSET  $\text{C}$  PAVEMENT ON LT : RT  
27.1' TO LT EDGE PAVEMENT  
 STATION: 579+47

HORIZ.DATUM: NAD83 2011 GEOID: NAVD88 2012A  
 GRID: NORTHING: 734466.080 EASTING: 1649680.990



RECORD:  
 FD MONBOX  
 W/IPIN  
 5-23-03, SH  
 FD MONBOX  
 W/ 1" IPIN  
 REF3  
 7-8-12, DCH  
 6-24-16, JFO

# O.D.O.T. DISTRICT 2 SURVEY OFFICE

PERSONNEL

REFERENCE NO. 3

SHEET 3 OF 8

NOTES S. HOFFMAN

H.C. A. Brown

R.C. C. Beaumont

M. Glass

DATE 5.23.2003

WEATHER overcast

TEMP. 65°

ROUTE SR 120

COUNTY Lucas

TOWNSHIP Sylvania

SECTION 23

T9 S.R. 6 E

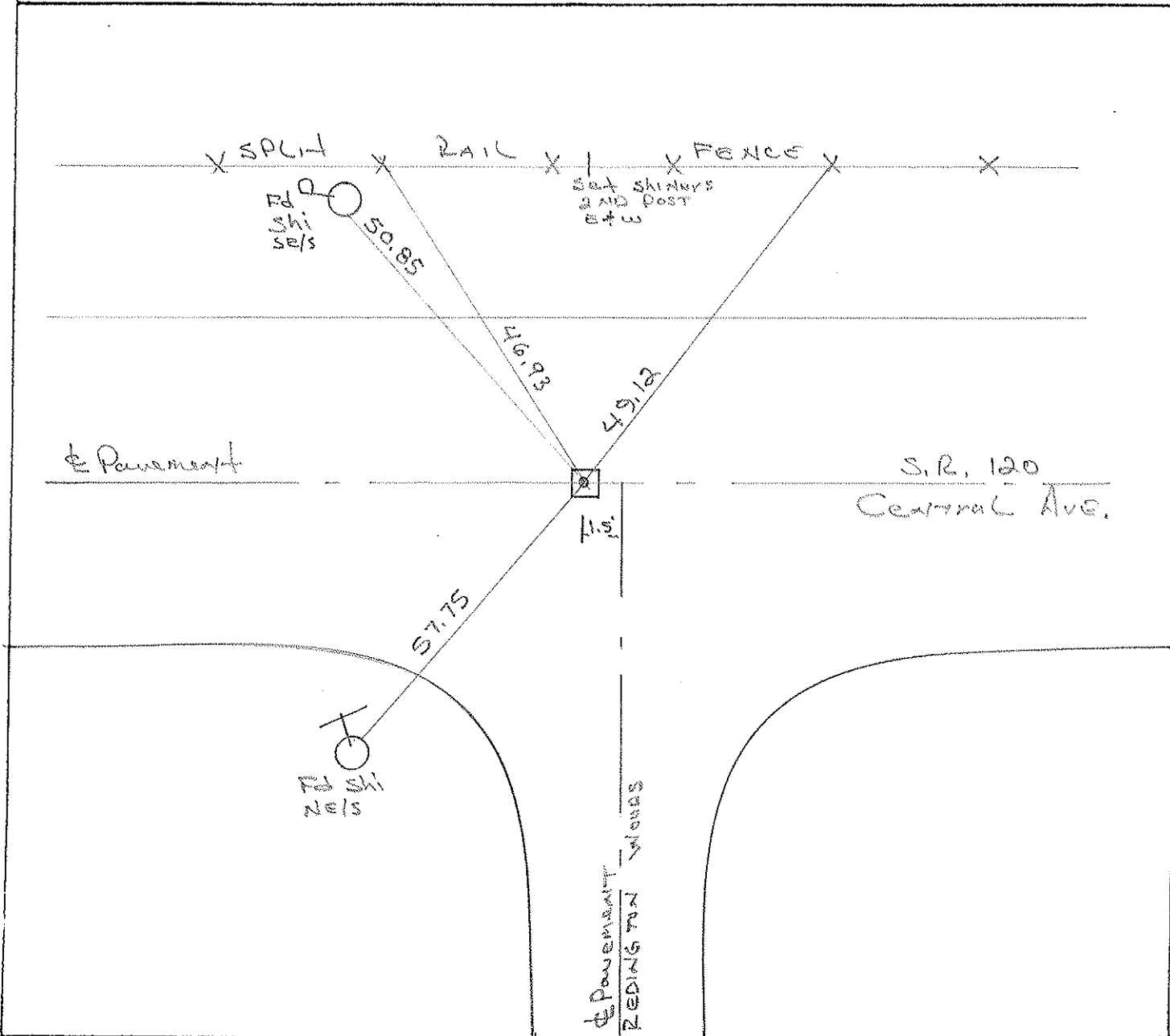
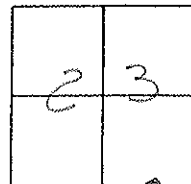
TYPE MONUMENT Monument Box w/ IRON PIN

ON SURFACE - BELOW yes

LEFT - & PAW'T. - RIGHT yes

27.1 TO LT EDGE PAVEMENT

S.L.M. 579+29



# O.D.O.T. DISTRICT 2 SURVEY OFFICE

PERSONNEL \_\_\_\_\_

REFERENCE NO. 2

SHEET 3 OF 8

NOTES LOGHRS

H.C. CORNES

DATE 7-1-93

ROUTE S.R. 120

R.C. CANTERBURY

WEATHER CLOUDY

COUNTY LUCAS

ROMETO

TEMP. +80

TOWNSHIP Sylvania

SECTION 23

T 9 S R 6 E

TYPE MONUMENT Mon Box

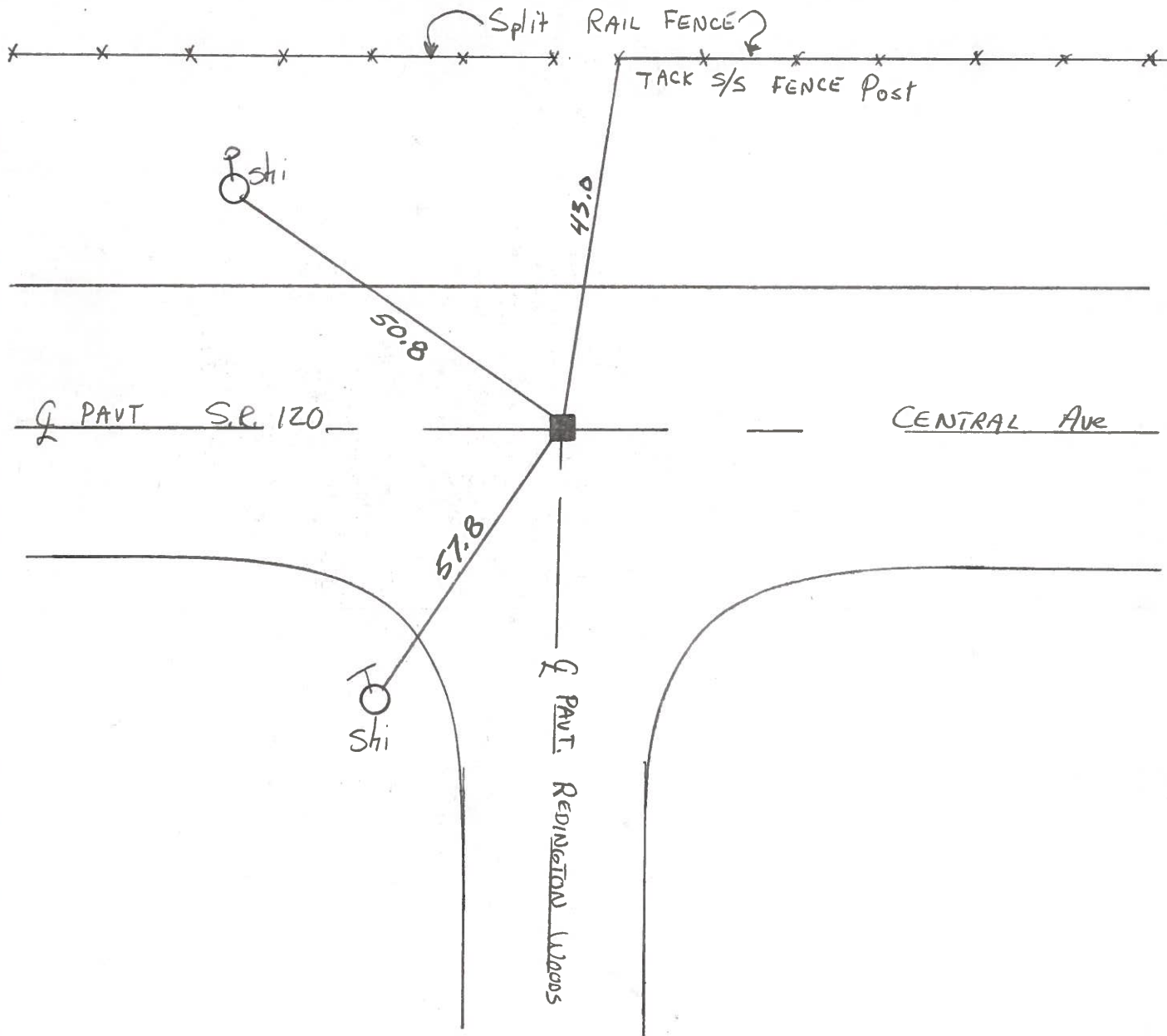
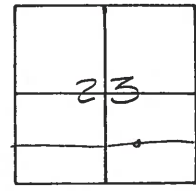
ON SURFACE - BELOW Yes

LEFT - & PAV'T. - RIGHT Yes

27.2 TO Lt. EDGE PAVEMENT

S.L.M. 579 +29

3



PERSONNEL	TITLE	PERSONNEL	TITLE
Tomic			
Nassar			
Vanyo			
Granata			

COUNTY Lucas DATE Sept. 7, 1972  
 S. R. U.S. 120 WEATHER \_\_\_\_\_  
 SEC. \_\_\_\_\_ TEMP. \_\_\_\_\_

DESCRIPTION Central ave LEFT CENTER LINE RIGHT JOB NO. \_\_\_\_\_

