

O.D.O.T. DISTRICT 2 SURVEY OFFICE (USE ONLY)

PERSONNEL

REFERENCE NO. 4

SHEET 4 OF 13

NOTES NIESE DATE 4/21/23
 H.C. NIESE WEATHER CLOUDY
 R.C. AUBLE TEMP. 60°

ROUTE SR 120
 COUNTY LUCAS
 TOWNSHIP SYLVANIA
 SECTION 23

DWG BY RHOADES PID 102940

T 9 S R 6 E

TYPE MONUMENT MONBOX W/ IPIN

ON SURFACE - ~~BELOW~~ ON

OFFSET \odot PAVEMENT 6.8' ~~±~~ : RT

26.9' TO RT EDGE PAVEMENT

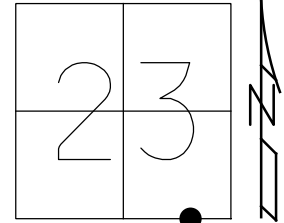
STATION: 584+07

HORZ.DATUM: NAD83 2011

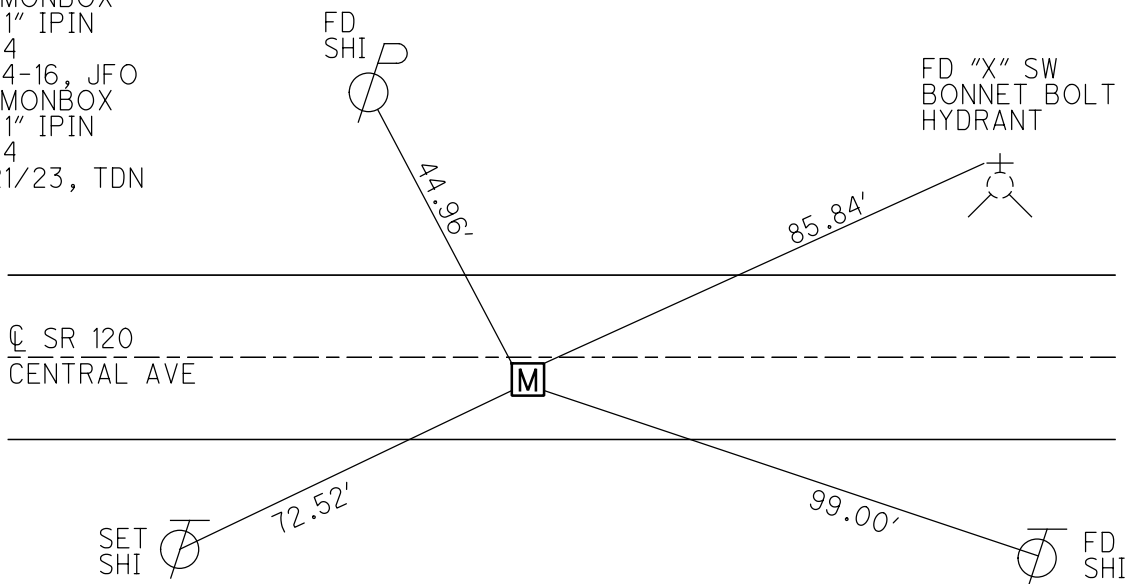
GEOID: NAVD88 2018

GRID: NORTHING: 734470.936

EASTING: 1650168.124



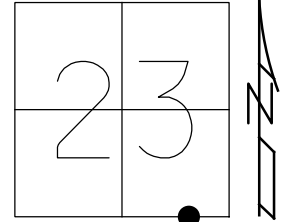
RECORD:
 FD MONBOX
 W/IPIN
 5-23-03, SH
 FD MONBOX
 W/IPIN
 REF4
 7-8-12, DCH
 FD MONBOX
 W/ 1" IPIN
 REF4
 6-24-16, JFO
 FD MONBOX
 W/ 1" IPIN
 REF4
 4/21/23, TDN



O.D.O.T. DISTRICT 2 SURVEY OFFICE (USE ONLY)

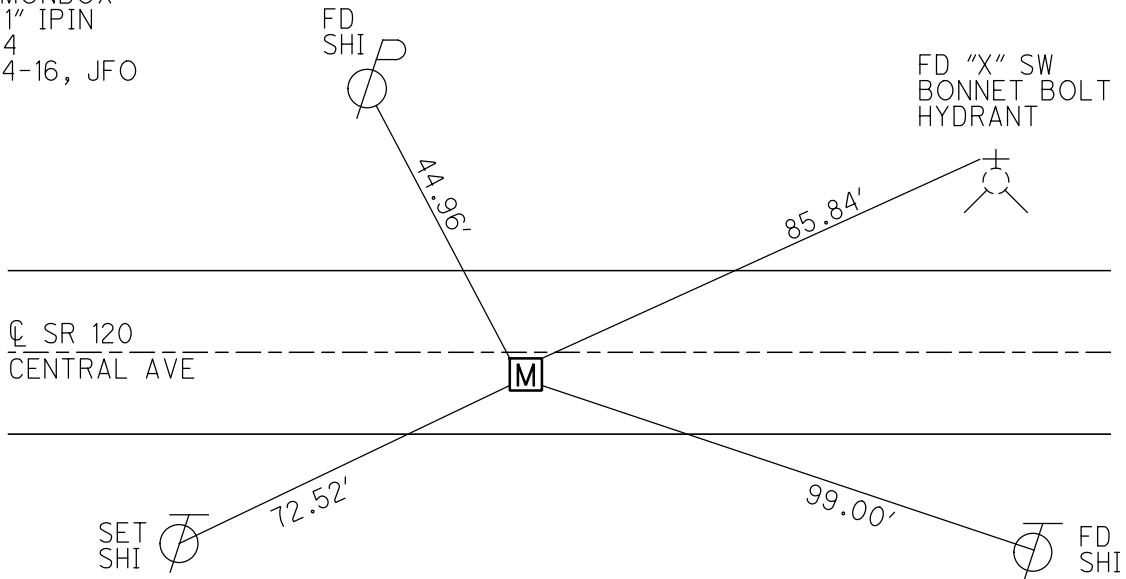
PERSONNEL _____ REFERENCE NO. 4 SHEET 4 OF 11
 NOTES HOFFMAN DATE 5-23-03 ROUTE SR 120
 H.C. BROWN WEATHER OVERCAST COUNTY LUCAS
 R.C. BEAUMONT TEMP. 60° TOWNSHIP SYLVANIA
 GLASS _____ SECTION 23
 DWG BY JAMES PID 95717 T9S R6E

TYPE MONUMENT MONBOX W/ IPIN
 ON SURFACE - ~~BELOW~~ ON
 OFFSET \odot PAVEMENT 6.8' ~~RT~~ : RT
26.9' TO RT EDGE PAVEMENT
 STATION: 584+07



HORIZ.DATUM: NAD83 2011 GEOID: NAVD88 2012A
 GRID: NORTHING: 734470.953 EASTING: 1650168.221

RECORD:
 FD MONBOX
 W/IPIN
 5-23-03, SH
 FD MONBOX
 W/IPIN
 REF4
 7-8-12, DCH
 FD MONBOX
 W/ 1" IPIN
 REF4
 6-24-16, JFO



O.D.O.T. DISTRICT 2 SURVEY OFFICE

PERSONNEL

REFERENCE NO. 4

SHEET 4 OF 8

NOTES S. Hoffmann

H.C. A. Brown

R.C. C. Beaumont

M. Glass

DATE 5-23-2003

WEATHER overcast

TEMP. 60°

ROUTE SR 120

COUNTY Lucas

TOWNSHIP Sylvania

SECTION 23

T 9 S R 6 E

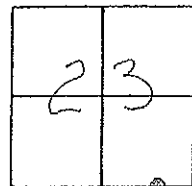
TYPE MONUMENT Monument Box w/ Front Pin

ON SURFACE - BELOW yes

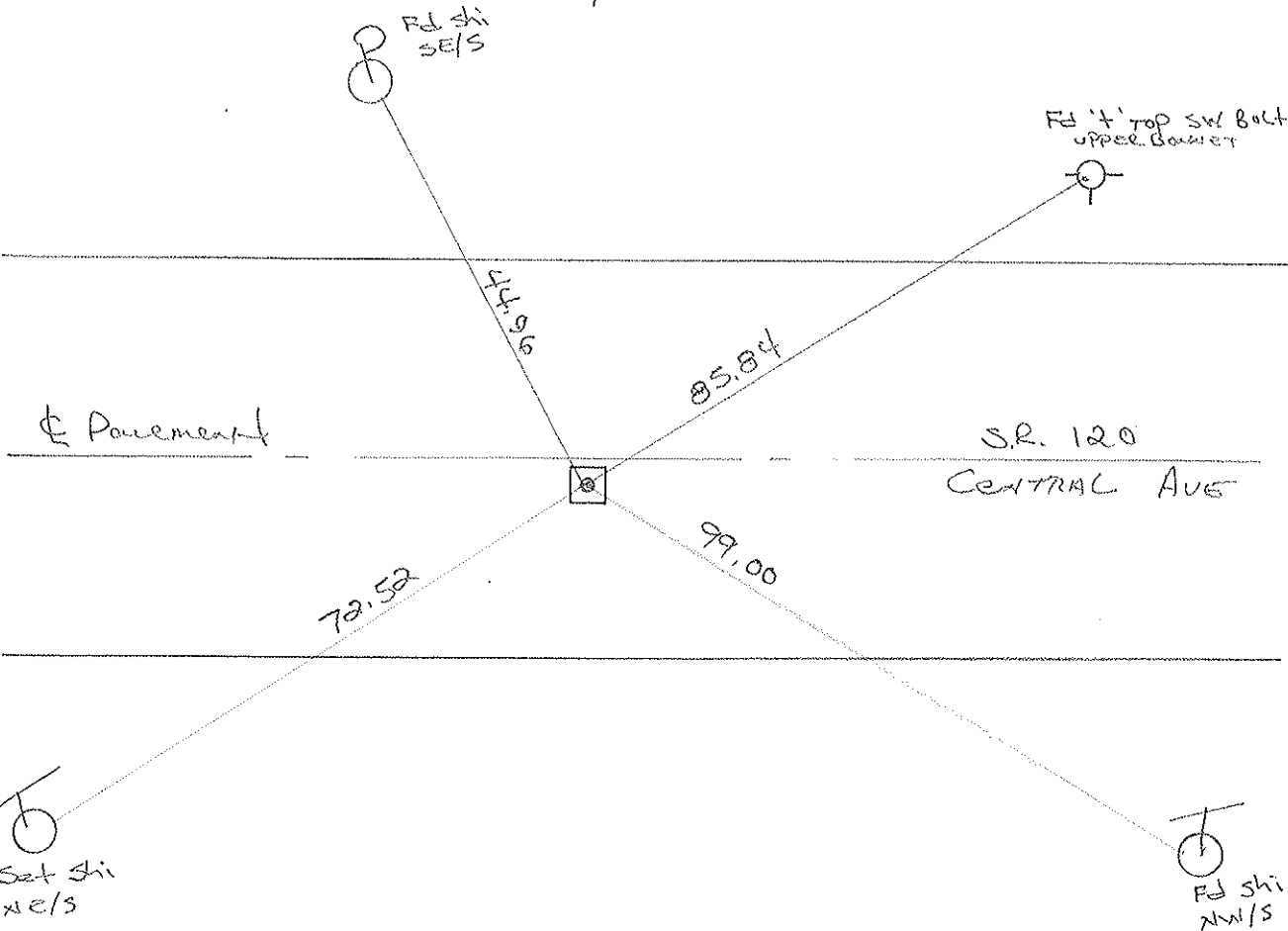
LEFT - & PAV'T. - RIGHT 6.8'

26.9 TO RT EDGE PAVEMENT

S.L.M. 584+17



→ ± 300' TO WILDWOOD METRO PARK ENTRANCE



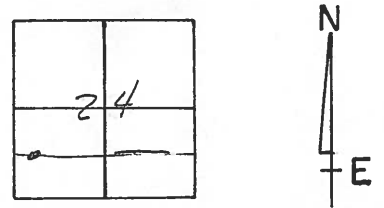
O.D.O.T. DISTRICT 2 SURVEY OFFICE

PERSONNEL _____ REFERENCE NO. 3 SHEET 4 OF 8

NOTES LOEHRKE
 H.C. CORDES DATE 7-7-93 ROUTE S.R. 120
 R.C. CANTERBURY WEATHER CLOUDY COUNTY LUCAS
ROMETO TEMP. +80 TOWNSHIP Sylvania
 SECTION 24
 T 9 S R 6 E

TYPE MONUMENT Mon Box
 ON SURFACE - BELOW Yes
~~LEFT~~ - PAV'T. - RIGHT 6.8
71.0 TO RT. EDGE PAVEMENT
 S.L.M. 584+17

4



± 300 West of ENTRANCE TO WILDWOOD METRO PARK

